



# PUMA

## *XLE LITE*

*by Palomino - Since 1968*

*YOUR WEEKEND GETAWAY*



**TRAVEL TRAILERS • TOY HAULERS**



**31BHSC** Spread out and relax! The plush sofa features a flip-down drink tray and has handy storage below. The family-friendly 84" radius U-dinette converts to an additional sleeping area. Spacious sliding windows let in plenty of light and fresh air. This well-equipped living space has LED lights throughout, and a large pantry.



Smooth, aerodynamic two-tone metal enhances curb appeal. Radius compartment doors are silicone sealed to protect from the elements. Includes a 13.5K BTU air conditioner, King antenna, outside speakers and pass-through storage.

The **31BHSC** L-galley has a large single bowl sink and access to storage from both sides—great for big pots and pans. Convenience features include a built-in spice rack, gooseneck faucet, contemporary nickel finished handles and door pulls. This galley comes complete with a 6 cu. ft. Dometic refrigerator, an oven and microwave. The 3-burner cooktop has a glass stove top cover to extend workspace and handy LED lit controls. Shown with an optional 39" TV. Turn up the tunes and jam. The entertainment center with CD/DVD/Bluetooth stereo system has shoe and pet dish storage underneath to keep things tidy. The dual entry master bedroom has a shirt wardrobe, nightstands and over bed storage.



**31BHSC** Kids and guests love this private bunk house. The sofa center panel has a fold down drink tray. The upper bunk hinges up and locks for added head room. The opposing side has built-in bunk ladder, shirt wardrobe, plus standard TV prep for movies and video games. Bunks are rated for 300 lbs. and include usb charging ports. Shown with an optional TV.



# PUMA

## XLE LITE

by Palomino - Since 1968

Puma XLE Lite offers a broad range of value added lighter weight floorplans that are loaded with convenience features. They're a perfect for fit couples and families for weekend getaways. Our well-planned packages offer a popular selection of user-friendly amenities that RV enthusiasts prefer. Interiors include durable Beauflor in woodgrain and efficient LED lighting throughout.

Construction features include solid I-beam frames, one-piece 5/8" floor decking and lightweight Alpha Superflex roofing. Smaller slide models offer the Schwintek slide system, while larger models use the rack and pinion slide system. Both of these reliable systems have manual override and provide superior sealing.

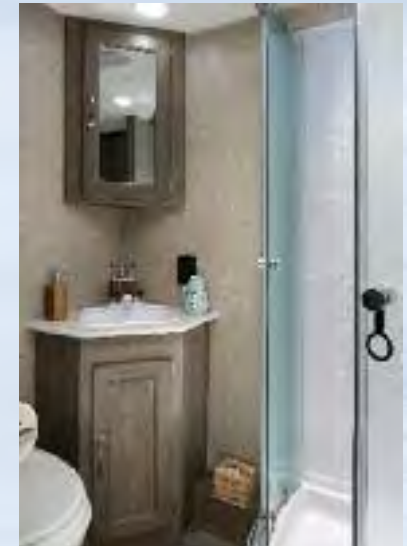
*The **25RLC** offers plenty of hallway storage. The large, 84" U-dinette converts to additional sleeping accommodations and features large sliding windows for fresh air and natural light. A well-designed L-galley provides easy storage access from both sides. The 3-burner stove has a decorative backsplash. Monitor holding tanks and battery capacity from a centrally located panel. Shown with an optional TV.*



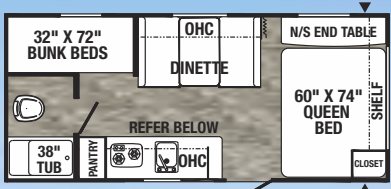
**25RLC** This Queen bed with designer bedding is flanked with mirrored shirt closets and includes a usb charging port.



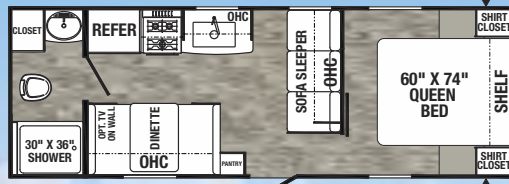
*The corner sink and vanity with built-in medicine cabinet maximize storage. Most models include a radius shower.*



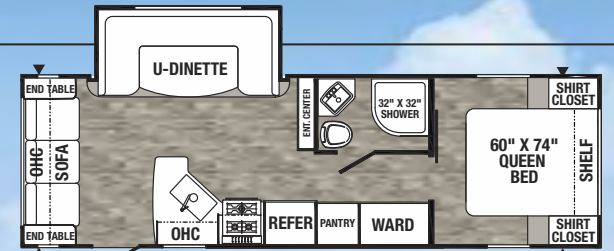
**Puma XLE Lite Travel Trailers** Puma XLE Lite offers 18 Travel Trailer floor plans.



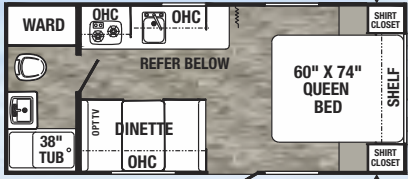
17QBC



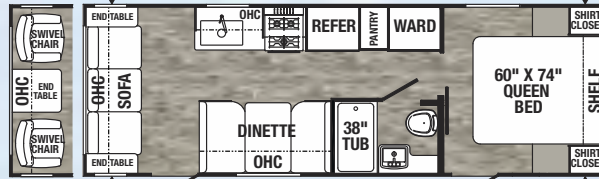
23FBC



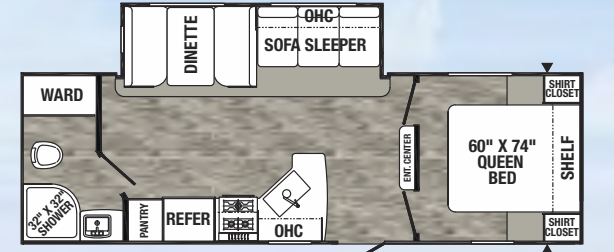
25RLC



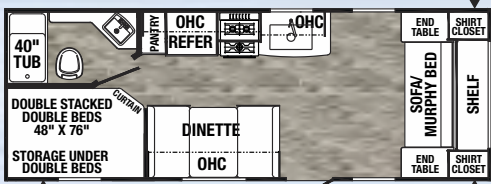
18FBC



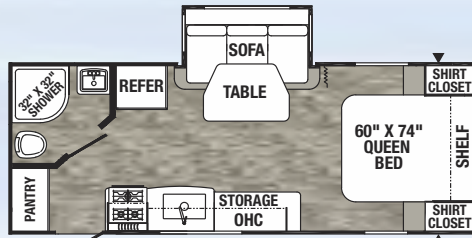
25RSC



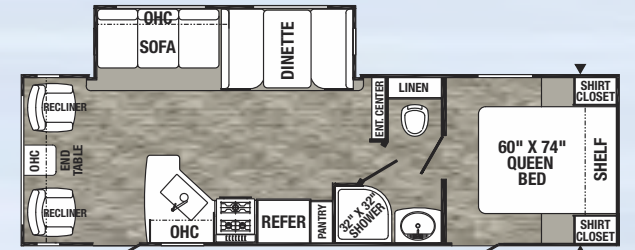
25RBC



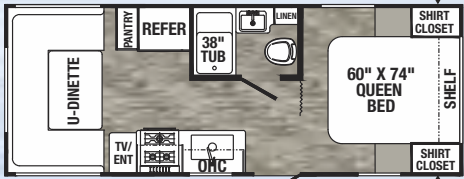
20MBC



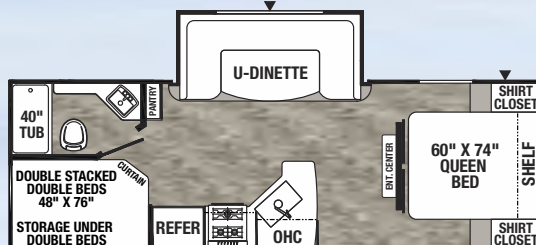
21FBC



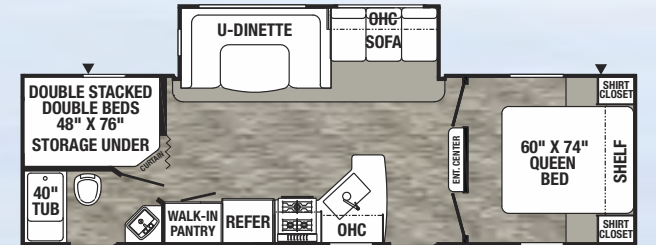
26RLSC



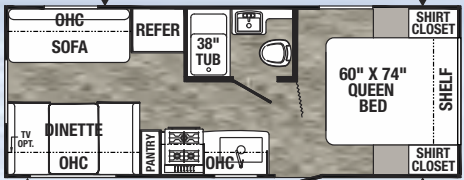
20RDC



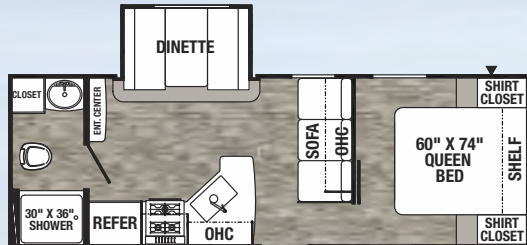
24BHC



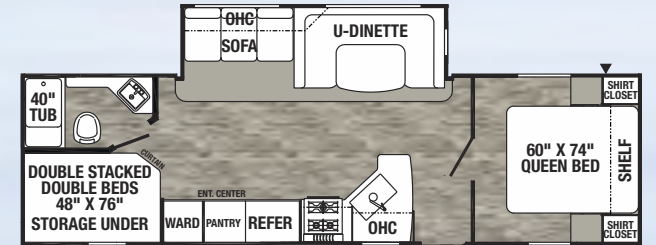
27DSBC



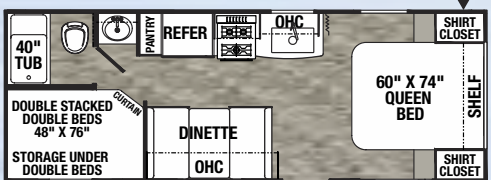
20RLC



24FBC

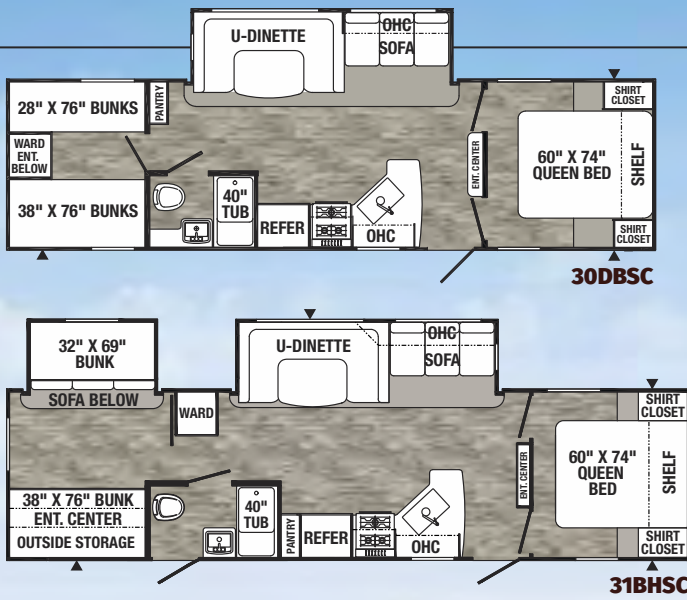


27RBQC



22RBC

## Puma XLE Lite Standard Features



### Exterior

- Radius Entry Doors
- Smooth, Radius Front Metal with Diamond Plate
- Large Front Frameless Window (Most models)
- Powder Coated Frames
- Super Lube Axles
- Tinted Safety Glass
- Clamp Ring Windows
- Pass-Thru Storage (Where applicable)
- Alpha Superflex Roof – 12 Year Manufacturer's Limited Warranty
- Rain Gutters with Large Drop Spouts
- ABS Automotive Style Fender Skirts
- Radius Baggage Doors
- Darco Wrapped Underbelly
- One-piece, 24" Sheet, 5/8" Floor Decking (25 Year manufacturer's limited warranty)
- 2" x 3" Flush Floor Joists on 12" Centers
- 2-20 Lb. Gas Bottles

- Rack & Pinion Electric Slide System with Manual Override (Large models)
- Schwintek Slide System with Manual Override (Small models)
- Clamp Ring Luggage Doors

### Interior

- 80" Interior Height (Large models)
- 76" Interior Height (Small models)
- Floor Ducted Heat (Most models)
- Decorative Kitchen Backsplash
- Spice Rack (Kitchen)
- Divided Silverware Drawer
- Nickel Finish, Single Control Gooseneck Kitchen Faucet
- Glass Range Cover
- Built-in Knife Rack
- LED Ceiling Lights
- 55 Amp Converter with Battery Charger
- Jack Knife Sofa with Pull-down Center Drink Tray – Storage Underneath (Most models)

- Wood Medicine Cabinet with Mirrored Door
- Power Vent in Bath
- Glass Shower Door\*
- 12V Shower LED Light
- 60" x 74" Queen Beds
- Upgraded Soft Teddy Bear Bunk Mats
- Shirt Closet in Front Bedrooms
- Three Interior Decors
- Satin Nickel Hardware, Light & Bath Fixtures
- Radius Dinette Seat Bases
- Residential Carpet with Pad
- Designer Window Treatments (Living room)

### Safety Features

- CO<sub>2</sub> Detector
  - LP Leak Detector
  - Fire Extinguisher
  - Smoke Detector
- \*Available on select models.

### Standard Value Leader Package (Required)

- Tub Surround
- Bedsprad with Pillow Heater
- TV Antenna with Cable Hook-up
- Tinted Windows
- Super Lube Axles
- Front and Rear Stabilizer Jacks
- Beauflor Linoleum
- Bath Skylight
- 6 Gal. Gas DSI Water Heater
- LED Lighting
- Bedroom TV Hook-up
- 4.1 Cu. Ft. 110V Refrigerator (Single axle models)
- Zip Screen (Toy Hauler models)

### Elite Package (Required Tandem Axle and Toy Hauler Models)

- Power Awning with LED Light Strip
- Oven
- Microwave
- Bluetooth FM/CD/DVD Stereo
- Two Exterior Speakers
- Outside Shower
- Spare Tire
- Front Diamond Plate
- 6 Cu. Ft. Double Door Refrigerator
- 13,500 BTU Ducted A/C

### XLE Express Package (Required Single Axle Models)

- Power Awning with LED Light Strip
- Microwave
- Bluetooth FM/CD/DVD Stereo
- Two Exterior Speakers
- Outside Shower
- Spare Tire
- Front Diamond Plate
- 13,500 BTU Ducted A/C

### Electric Power Package (Optional – N/A Single Axle Models)

- 4 Electric Stabilizer Jacks
- 3,500 Lb. Electric Tongue Jack

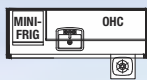
## Puma XLE Lite Travel Trailers

| Model                   | 17QBC  | 18FBC  | 20MBC   | 20RDC  | 20RLC  | 22RBC   | 23FBC  | 25RSC  | 21 FBC | 24BHC  | 24FBSC | 25RLC  | 25RBCSC | 26RLSC | 27DSBC | 27RBQC | 30DBSC | 31BHCSC |
|-------------------------|--------|--------|---------|--------|--------|---------|--------|--------|--------|--------|--------|--------|---------|--------|--------|--------|--------|---------|
| Hitch Weight            | 403    | 382    | 450     | 430    | 380    | 435     | 600    | 529    | 460    | 530    | 556    | 682    | 590     | 712    | 648    | 687    | 754    | 912     |
| Axle Weight             | 3021   | 3046   | 3970    | 3680   | 3956   | 3770    | 3899   | 4216   | 4092   | 4740   | 4252   | 4928   | 5070    | 5368   | 5513   | 5208   | 5546   | 6996    |
| UVW                     | 3453   | 3457   | 4458    | 4148   | 4124   | 4243    | 4537   | 4784   | 4590   | 5308   | 4808   | 5610   | 5698    | 6118   | 6199   | 5933   | 6338   | 7946    |
| GVWR                    | 4803   | 4782   | 6000    | 5800   | 6000   | 5800    | 6300   | 6500   | 6200   | 7000   | 6500   | 7200   | 7300    | 7712   | 7800   | 7687   | 8000   | 9600    |
| CCC (Cargo Cap.)        | 1350   | 1325   | 1542    | 1652   | 1876   | 1557    | 1763   | 1716   | 1610   | 1692   | 1654   | 1552   | 1602    | 1594   | 1601   | 1754   | 1662   | 1654    |
| Exterior Length         | 22'    | 22' 4" | 25' 10" | 25' 0" | 24' 8" | 25' 10" | 27' 4" | 28' 4" | 25' 3" | 28' 3" | 27' 4" | 30' 4" | 29' 6"  | 31' 3" | 32' 2" | 33' 0" | 33' 5" | 35' 4"  |
| Exterior Height w/AC    | 10' 2" | 10' 2" | 10' 2"  | 10' 2" | 10' 2" | 10' 2"  | 10' 2" | 10' 2" | 10' 2" | 10' 2" | 10' 2" | 10' 2" | 11' 1"  | 11' 1" | 11' 1" | 11' 1" | 11' 1" | 11' 1"  |
| Exterior Width          | 96"    | 96"    | 96"     | 96"    | 96"    | 96"     | 96"    | 96"    | 96"    | 96"    | 96"    | 96"    | 96"     | 96"    | 96"    | 96"    | 96"    | 96"     |
| Fresh Water Cap. (Gal.) | 51     | 51     | 51      | 51     | 51     | 51      | 51     | 51     | 51     | 51     | 51     | 51     | 51      | 51     | 51     | 51     | 51     | 51      |
| Black Water Cap. (Gal.) | 35     | 32     | 35      | 35     | 35     | 35      | 35     | 35     | 35     | 32     | 35     | 35     | 35      | 35     | 32     | 35     | 35     | 35      |
| Grey Water Cap. (Gal.)  | 35     | 35     | 35      | 35     | 35     | 35      | 35     | 35     | 35     | 67     | 35     | 35     | 35      | 35     | 67     | 67     | 35     | 35      |
| Tire Size (In.)         | 15"    | 15"    | 14"     | 14"    | 14"    | 14"     | 14"    | 14"    | 14"    | 14"    | 14"    | 14"    | 15"     | 15"    | 15"    | 15"    | 15"    | 15"     |
| Awning Size (Ft.) OPT.  | 13'    | 11'    | 12'     | 12'    | 14'    | 10'     | 16'    | 16'    | 14'    | 17'    | 16'    | 16'    | 18'     | 17'    | 17'    | 21'    | 18'    | 21'*    |

\*Awning is 16' with outside kitchen option

## Travel Trailer Options

### OUTSIDE KITCHEN OPTION W/ INDUCTION



### MINI CAMP KITCHEN OPTION W/ INDUCTION

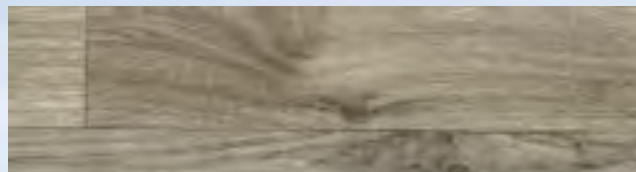


### MICRO OUTSIDE KITCHEN OPTION W/INDUCTION



## Decor Choices Puma offers a selection of three contemporary decor packages

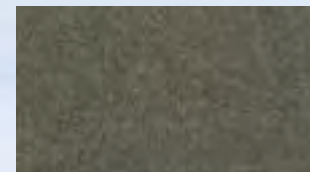
### Flooring Beauflor® Wood grain linoleum with a 7-year cold crack warranty



### Stone



### Ice Latte



### Reagen Taupe



**GVWR (Gross Vehicle Weight Rating)** - is the maximum permissible weight of the unit when fully loaded. It includes all weights, inclusive of all fluids, cargo, optional equipment and accessories. For safety and product performance do NOT exceed the GVWR.

**GAWR (Gross Axle Weight Rating)** - is the maximum permissible weight, including cargo, fluids, optional equipment and accessories that can be safely supported by a combination of all axles.

**UVW (Unloaded Vehicle Weight)** - is the typical weight of the unit as manufactured at the factory. It includes all weight at the unit's axle(s) and tongue or pin and LP Gas. The UVW does not include cargo, fresh potable water, additional optional equipment or dealer installed accessories.

\*Estimated Average based on standard build optional equipment.

**CCC (Cargo Carrying Capacity)\*\*** - is the amount of weight available for fresh potable water, cargo, additional optional equipment and accessories. CCC is equal to GVWR minus UVW. Available CCC should accommodate fresh potable water (8.3 lbs per gallon). Before filling the fresh water tank, empty the black and gray tanks to provide for more cargo capacity.

\*\*Estimated average based on standard build optional equipment.

Each Forest River RV is weighed at the manufacturing facility prior to shipping. A label identifying the unloaded vehicle weight of the actual unit and the cargo carrying capacity is applied to every Forest River RV prior to leaving our facilities. The load capacity of your unit is designated by weight, not by volume, so you cannot necessarily use all available space when loading your unit.

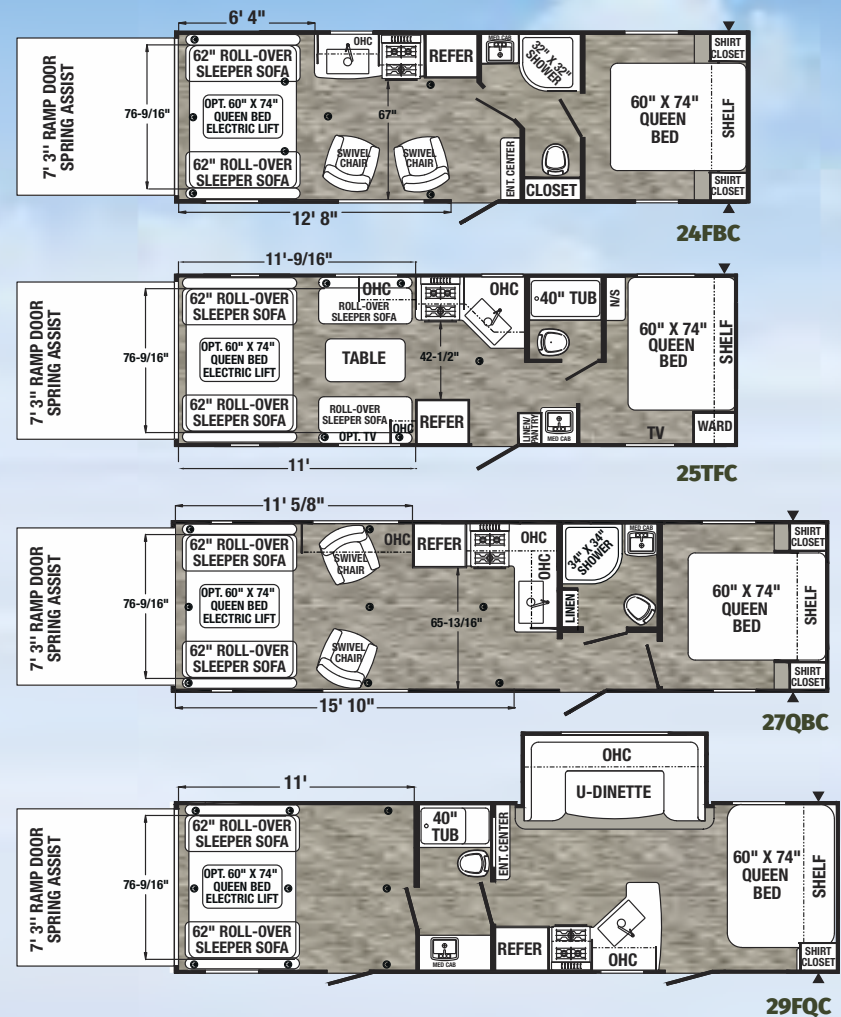


Keep the good times rolling, inside and out. The **25TFC** toy hauler includes an outside kitchen with a pull-out induction stove, a sink with hot and cold running water with a holding tank and refrigerator. Shown with an optional power jack.

### Pack a Lot of Fun!

Good times are just around the corner with Puma XLE Lite Toy Haulers. The versatile garage area in the **25TFC** features roll-over sofas that convert to an extra sleeping area with a divider privacy curtain. The 7'3" door opening accommodates larger toys. A zip screen ramp door lets fresh air in and keeps insects out. The dinette table can be used indoors or out. The **25TFC** Toy Hauler comes equipped with these standards: heavy-duty, 5,000 lb. D-ring tie-downs, a decorative backsplash and 3-burner cooktop. Shown with the Elite package including: an oven, microwave, 6 cu. ft. gas/electric refrigerator, Bluetooth FM/CD/DVD stereo, exterior speakers and an outside shower. Shown with an optional a single electric queen bed. A double electric queen bed and night shades are available options.

## Puma XLE Lite Toy Haulers



### Toy Hauler Options

OUTSIDE KITCHEN  
OPTION W/ INDUCTION



### Puma XLE Lite Travel Trailer Toy Haulers

| Model                   | 24 FBC | 25TFC  | 27 QBC  | 29 FQC |
|-------------------------|--------|--------|---------|--------|
| Hitch Weight            | 775    | 745    | 892     | 1006   |
| Axle Weight             | 5248   | 5354   | 5716    | 5726   |
| UVW                     | 6061   | 6137   | 6646    | 6770   |
| GVWR                    | 7775   | 8800   | 9200    | 9300   |
| CCC (Cargo Cap.)        | 1714   | 2663   | 2554    | 2530   |
| Exterior Length         | 29' 7" | 29' 7" | 33' 11" | 34' 1" |
| Exterior Height w/AC    | 12' 2" | 12' 2" | 12' 2"  | 12' 2" |
| Exterior Width          | 96"    | 96"    | 96"     | 96"    |
| Fresh Water Cap. (Gal.) | 51     | 51     | 51      | 51     |
| Black Water Cap. (Gal.) | 35     | 35     | 35      | 35     |
| Grey Water Cap. (Gal.)  | 35     | 35     | 35      | 35     |
| Tire Size (In.)         | 15"    | 15"    | 15"     | 15"    |
| Awning Size (Ft.) OPT.  | 18'    | 14'    | 19'     | 21'    |

# PUMA

XLE LITE





Decorative backsplash with a 3-burner cooktop



This L-shaped galley extends workspace and has a 50/50 sink with a high rise faucet, sink cover and seamless countertops. Storage cabinets have both front and back access.



Bright, energy efficient LED interior lighting



Single bowl sink with covers



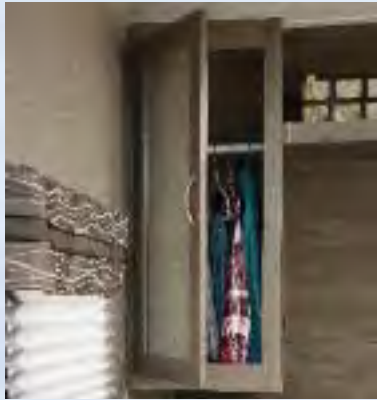
Bath skylight for natural light



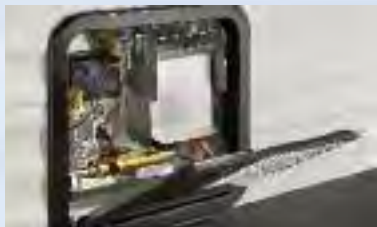
Wardrobe and pantry storage



Walk-around queen bed with designer bedspread, large shirt wardrobes, night stands and shelves next to the bed and overhead



ABS radius shower with a skylight and glass shower doors (Most models)



Six gallon direct start ignition (DSI) water heater



84" U-dinette converts to a large sleeping area, with storage and a 110V outlet underneath. The sofa has a flip-down drink tray and additional storage. 14" Deep overhead cabinet storage



Easy to lift under bed storage with finished edge trim is ideal for linens and large items



New cabinet doors



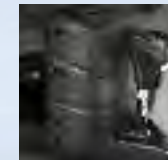
Reliable rack and pinion flush-floor slide system



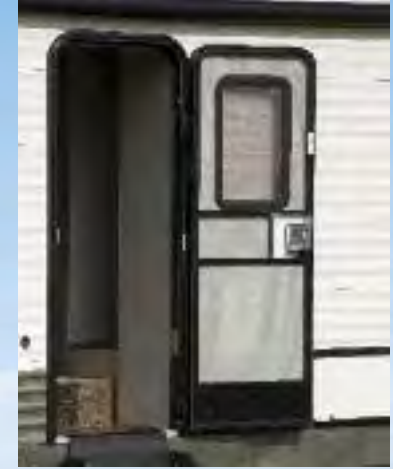
King Jack directional HDTV antenna with built-in, long-range signal finder



Rear stabilizer jacks are standard. (Optional power stabilizer jack shown)



(2) 20 Lb. LP bottle and cover (Optional lighted power jack shown)



Entry door with window and kick plate



Hot and cold outside shower reduces tracking dirt indoors



Tinted windows add style and reduce interior fading



Grey steel wheel rims with Super Lube axles and ABS molded fender skirts



This convenient outside kitchen option includes a slide out induction cooktop, a 3.2 cu. ft. refrigerator, hot and cold running water, plenty of overhead cabinets, under counter drawers, cookware and utensils. (Select models)



This mini kitchen option includes a pull-out induction cooktop, a 1.6 cu. ft. refrigerator, a removable sink, plus cookware and utensils. (Select models)

The **24BHC** features well-placed double bunks with usb charging ports. The galley includes a 6 cu. ft. double door refrigerator with storage below, an attractive one-piece, L-shaped seamless countertop with long-lasting, abrasion resistant surf(x)<sup>®</sup> 3D that maintains a "like new" appearance.

# PUMA

## XLE LITE

by Palomino - Since 1968



**Puma XLE Lite by Palomino,**  
**a Division of Forest River, Inc.**  
 2551 Century Drive ■ Goshen, IN 46528  
[www.palominorv.com](http://www.palominorv.com)



**Learn More**  
 Scan this barcode using a QR Reader on your smart phone to learn more about Forest River.



A Berkshire Hathaway company.



### PRE-DELIVERY INSPECTION FACILITY

20,000 square feet of quality assurance. The bare essentials for a premium product. This state-of-the-art facility gives immediate daily feedback to production for quality assurance in every unit built.

### Puma XLE Lite Owner "Digital Kit" App

Now you can have your Owner's Manual with you wherever you are. Download our FREE App from the App Store or Google Play and you'll have the information right at your fingertips.



### 24/7 EMERGENCY ROADSIDE ASSISTANCE WITH VEHICLE PURCHASE\*

TOWING  
 JUMP-STARTS  
 TIRE CHANGES  
 FLUID DELIVERY  
 LOCKOUT  
 SERVICE

WINCH-OUT  
 MOBILE MECHANIC  
 TECHNICAL  
 SUPPORT  
 DEALER LOCATOR  
 SERVICES



\*VALID FOR 1 YEAR FROM DATE OF PURCHASE

## FREE MEMBERSHIP

to Forest River Owners' Group



[www.forestriverfrog.com](http://www.forestriverfrog.com)



[www.ForestRiverBuyLocal.com](http://www.ForestRiverBuyLocal.com)

All information contained in this brochure is believed to be accurate at the time of publication. However, during the model year, it may be necessary to make revisions and Forest River, Inc., reserves the right to make all such changes without notice, including prices, colors, materials, equipment and specifications as well as the addition of new models and the discontinuance of models shown in this brochure. Therefore, please consult with your Forest River dealer and confirm the existence of any materials, design or specifications that are material to your purchase decision. ©2018 Puma by Palomino a Division of Forest River, Inc., a Berkshire Hathaway company. All Rights Reserved. 12/18

### Your PUMA XLE Lite Dealer

Colton RV & Marine  
 3122 Niagara Falls Blvd  
 North Tonawanda, NY 14120  
 (716) 694-0188  
[www.ColtonRV.com](http://www.ColtonRV.com)

Colton RV  
 3443 Southwestern Blvd.  
 Orchard Park, NY 14127  
 (716) 957-3250  
[www.Coltonrv.com](http://www.Coltonrv.com)