

ARCADIA

THE BEGINNING OF SOMETHING EXTRAORDINARY



 **KEYSTONE**
RV COMPANY

LIVE IT OUT.

ARCADIA

THE BEGINNING OF SOMETHING EXTRAORDINARY



KEYSTONE
RV COMPANY

LIVE IT OUT.



INSPIRED, INTENTIONAL, IN A LEAGUE OF ITS OWN

Keystone Arcadia was conceived, designed and engineered by a team with an unrelenting drive to challenge the beliefs and barriers to building the next generation RV. Delivering more performance, convenience, comfort and style, Arcadia speaks to an emerging group of campers with new ideals, new expectations, and a drive to shatter barriers of their own.

For more information, please visit keystonerv.com/Arcadia



INSPIRED, INTENTIONAL, IN A LEAGUE OF ITS OWN

Keystone Arcadia was conceived, designed and engineered by a team with an unrelenting drive to challenge the beliefs and barriers to building the next generation RV. Delivering more performance, convenience, comfort and style, Arcadia speaks to an emerging group of campers with new ideals, new expectations, and a drive to shatter barriers of their own.

For more information, please visit keystonerv.com/Arcadia

INTRODUCING: THE NGC2

Arcadia completely reinvents the fifth wheel frame, delivering superior systems' performance, unprecedented weather protection, surprise boondocking wins, and storage for days.

- HVAC, plumbing, electrical and tanks no longer need to navigate around welded cross members and can be laid out for optimal efficiency and performance
- Direct-run furnace ducting with residential-style heating via discreetly placed floor vents
- Center spine adds structural integrity and HyperDeck™ floor support



SPACE SAVER™ UPPER DECK & NEW FRONT CAP STANCE (FW ONLY)

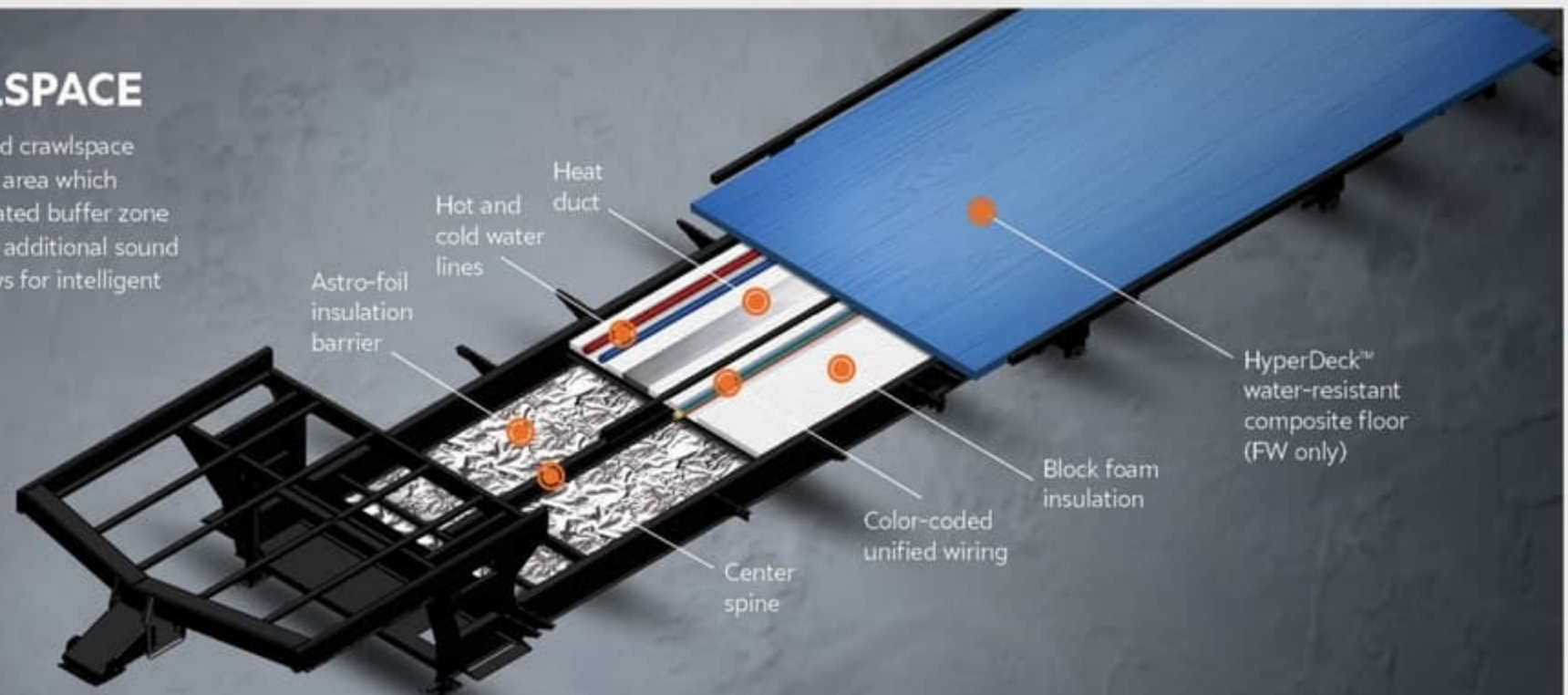
Space Saver upper deck design which replaces a series of 2" x 6" beams with one 6" x 6" header beam, allowing for a flush-floor walk-in closet. But we didn't stop there, by reducing the pitch of the front cap and raising the height of the cap's "nose" (the most forward point), Arcadia owners are treated to a spacious ensuite walk-in closet with shelving, a full-length hanging rod, and hookups for either side-by-side or stackable washer and dryer.

REVOLUTIONARY: THE CRAWLSPACE

Installed below the HyperDeck™ main floor, Arcadia's patented crawlspace utilizes block foam insulation to create a 360 degree enclosed area which houses water lines, wiring and a residential heat duct. This heated buffer zone protects your water lines from the elements while creating an additional sound and rodent barrier. Strategic placement of the heat duct allows for intelligent vent placements in your Arcadia.

3 LAYERS OF INSULATION

Beneath every Arcadia cabin are two heated chambers and three layers of insulation. Water lines and heat ducts are enclosed in the crawlspace with Keystone's HyperDeck™ on top and a second layer of block foam insulating the bottom of the crawlspace. In the basement, there is a layer of Astro-foil insulation as well as 12-volt heat pads and circulated heat to keep your tanks protected.



INTRODUCING: THE NGC2

Arcadia completely reinvents the fifth wheel frame, delivering superior systems' performance, unprecedented weather protection, surprise boondocking wins, and storage for days.

- HVAC, plumbing, electrical and tanks no longer need to navigate around welded cross members and can be laid out for optimal efficiency and performance
- Direct-run furnace ducting with residential-style heating via discreetly placed floor vents
- Center spine adds structural integrity and HyperDeck™ floor support



SPACE SAVER™ UPPER DECK & NEW FRONT CAP STANCE (FW ONLY)

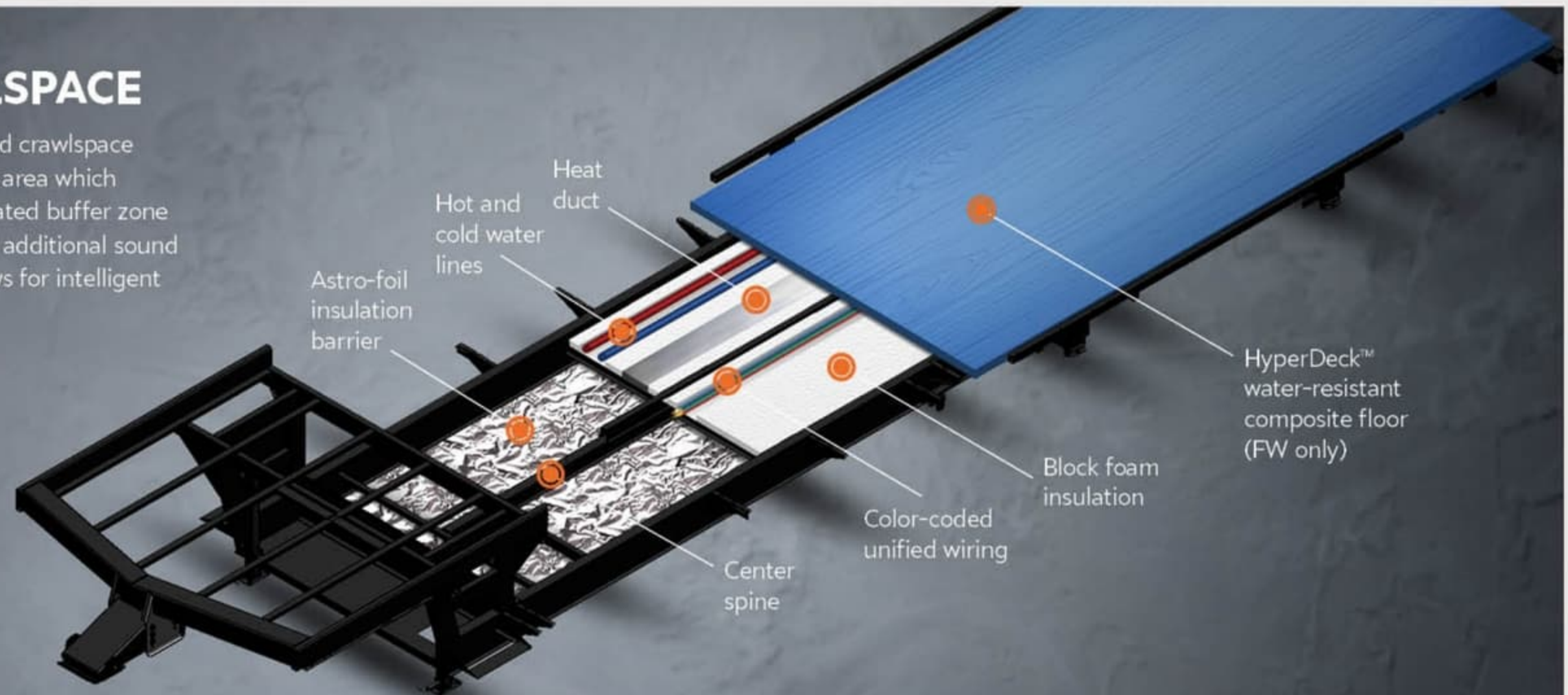
Space Saver upper deck design which replaces a series of 2" x 6" beams with one 6" x 6" header beam, allowing for a flush-floor walk-in closet. But we didn't stop there, by reducing the pitch of the front cap and raising the height of the cap's "nose" (the most forward point), Arcadia owners are treated to a spacious ensuite walk-in closet with shelving, a full-length hanging rod, and hookups for either side-by-side or stackable washer and dryer.

REVOLUTIONARY: THE CRAWLSPACE

Installed below the HyperDeck™ main floor, Arcadia's patented crawlspace utilizes block foam insulation to create a 360 degree enclosed area which houses water lines, wiring and a residential heat duct. This heated buffer zone protects your water lines from the elements while creating an additional sound and rodent barrier. Strategic placement of the heat duct allows for intelligent vent placements in your Arcadia.

3 LAYERS OF INSULATION

Beneath every Arcadia cabin are two heated chambers and three layers of insulation. Water lines and heat ducts are enclosed in the crawlspace with Keystone's HyperDeck™ on top and a second layer of block foam insulating the bottom of the crawlspace. In the basement, there is a layer of Astro-foil insulation as well as 12-volt heat pads and circulated heat to keep your tanks protected.



AUTOMOTIVE DNA

Taking cues from the automotive industry, the Arcadia team kicks its finish game up a notch.



1. DYNAMIC LINES

Forward-leaning front cap and arched roofline lean into the adventure.

2. UNOBSTRUCTED & FINISHED STORAGE

Like the trunk of your car, Arcadia's storage compartments are fully lined and free from exposed wires, plumbing and other components. The front pass-through storage has equally sized doors on both sides and features d-ring tie downs.

3. MASTER CONVENIENCE CENTER

The Arcadia team created a dedicated spot for all of your hookups that was NOT in your pass-through storage. This intelligent design provides unmatched convenience and isolates your wet connections inside a remote location. An intuitive instructional chart guarantees ease of use.

4. ELECTRIC AUTO-LEVELING

With the push of a button, Ground Control 3.0 levels and stabilizes your Arcadia quickly and accurately in a matter of minutes. The touch pad is securely and conveniently located behind a locked door with step-by-step instructions provided.

5. MAXTURN™ TECHNOLOGY (FW ONLY)

Keystone fifth wheel RV owners can make tight turns more confidently with Keystone's EXCLUSIVE MaxTurn™ Technology. Developed by the Keystone Innovation Lab, MaxTurn™ patented tube frame design combined with a tapered fiberglass front cap provides an additional 8" of turning radius than the standard straight tube design. MaxTurn™ delivers an expected turning radius of more than 95° without an expensive and difficult to maintain swivel hitch pin.

AUTOMOTIVE DNA

Taking cues from the automotive industry, the Arcadia team kicks its finish game up a notch.



1. DYNAMIC LINES

Forward-leaning front cap and arched roofline lean into the adventure.

2. UNOBSTRUCTED & FINISHED STORAGE

Like the trunk of your car, Arcadia's storage compartments are fully lined and free from exposed wires, plumbing and other components. The front pass-through storage has equally sized doors on both sides and features d-ring tie downs.

3. MASTER CONVENIENCE CENTER

The Arcadia team created a dedicated spot for all of your hookups that was NOT in your pass-through storage. This intelligent design provides unmatched convenience and isolates your wet connections inside a remote location. An intuitive instructional chart guarantees ease of use.

4. ELECTRIC AUTO-LEVELING

With the push of a button, Ground Control 3.0 levels and stabilizes your Arcadia quickly and accurately in a matter of minutes. The touch pad is securely and conveniently located behind a locked door with step-by-step instructions provided.

5. MAXTURN™ TECHNOLOGY (FW ONLY)

Keystone fifth wheel RV owners can make tight turns more confidently with Keystone's EXCLUSIVE MaxTurn™ Technology. Developed by the Keystone Innovation Lab, MaxTurn™ patented tube frame design combined with a tapered fiberglass front cap provides an additional 8" of turning radius than the standard straight tube design. MaxTurn™ delivers an expected turning radius of more than 95° without an expensive and difficult to maintain swivel hitch pin.

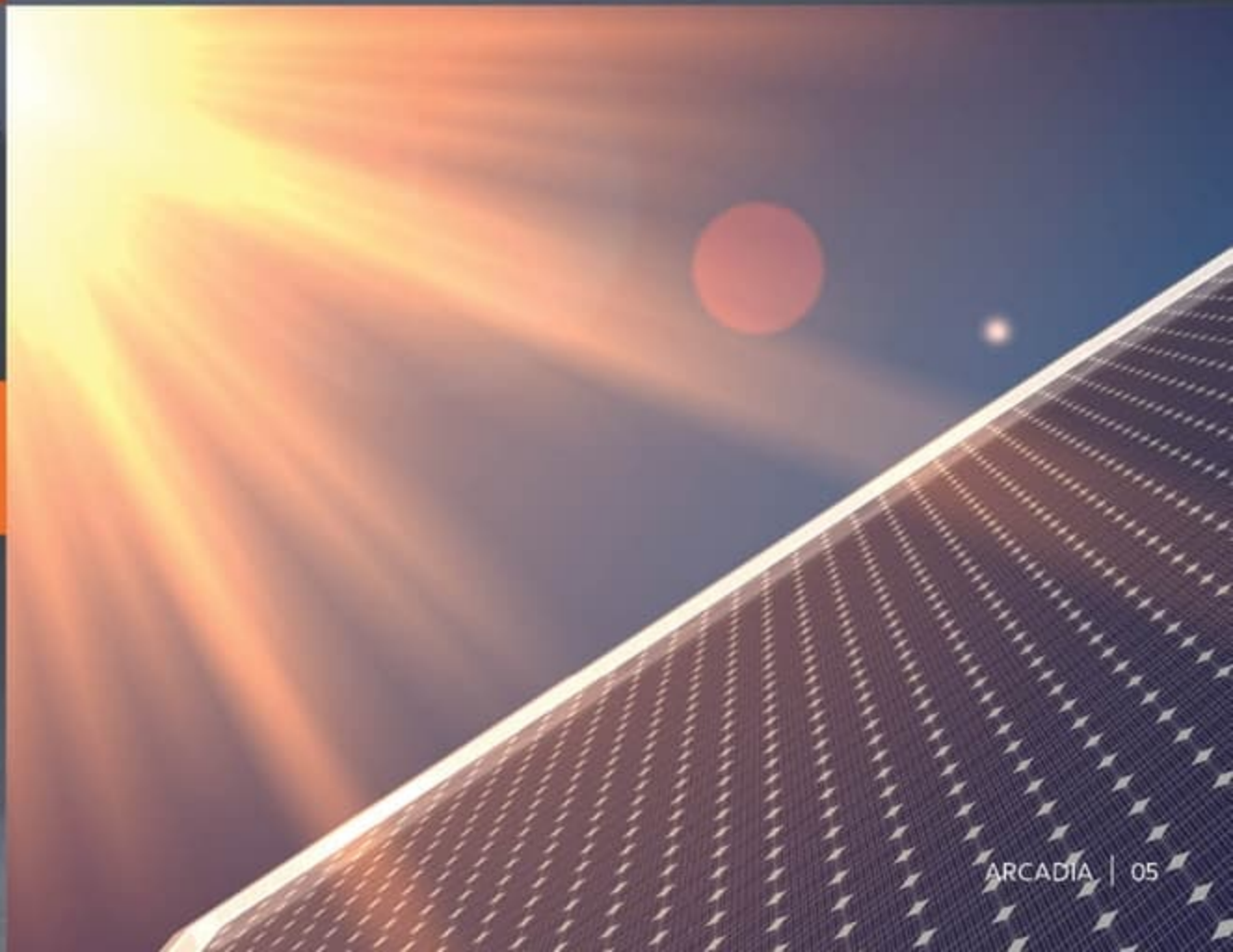


GET ON THE ROAD, AND STAY ON THE ROAD

With more interior and exterior storage, more fresh water, more insulation and an optional state-of-the-art solar power package, Arcadia has what owners need for longer trips and to get off the grid.

OPTIONAL SOLAR POWER PACKAGE:

Arcadia's Solar X™ leads the industry when comparing solar prep packages. Arcadia is factory-wired to readily expand upon your after-market desires for upgrading to a robust solar system. Solar X™ includes two (2) roof ports supporting the installation of four (4) 300W solar panels, six (6) inverted outlets, inverted wiring to your air conditioner, lithium battery storage compatibility in the front bulkhead, and 10 gauge wiring necessary to power your key solar system components.



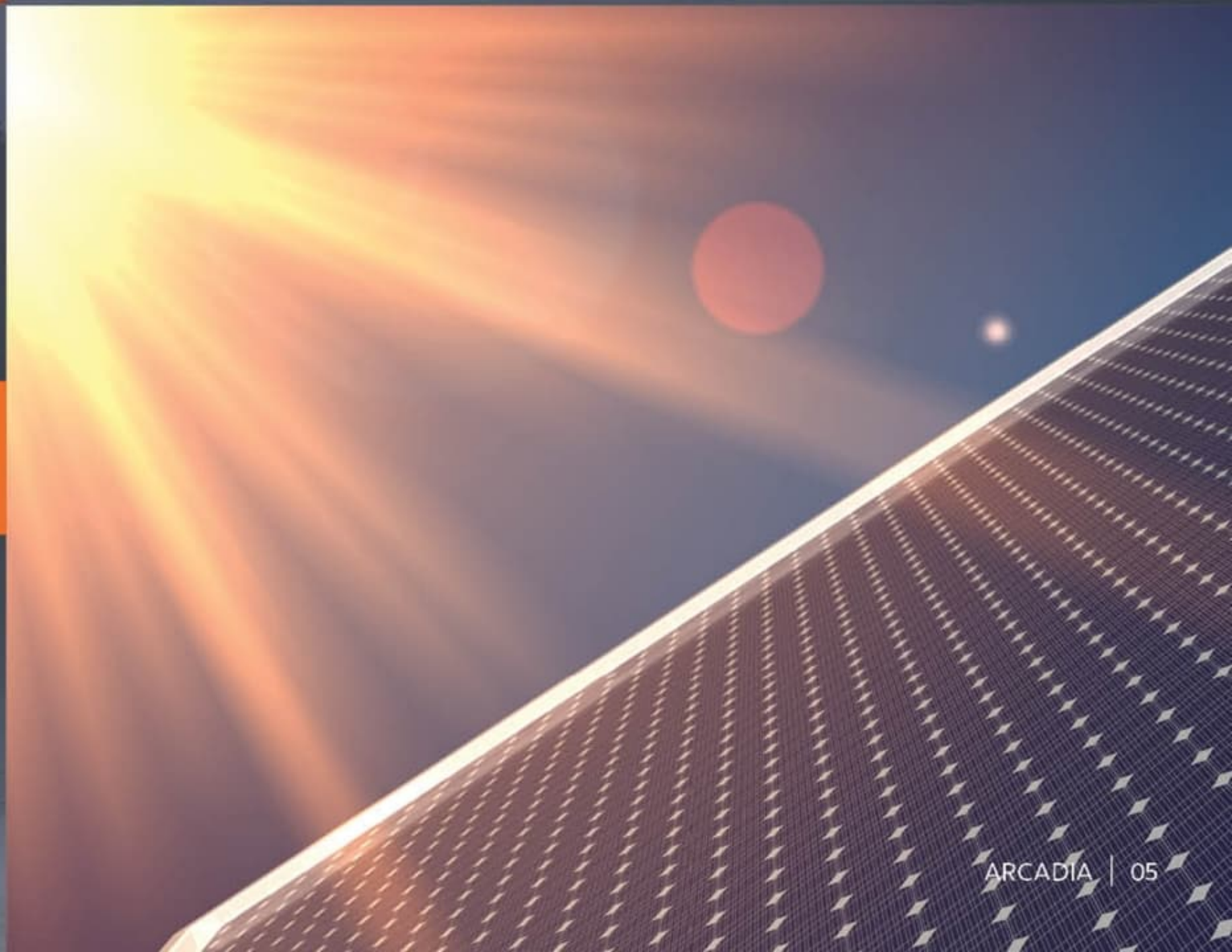


GET ON THE ROAD, AND STAY ON THE ROAD

With more interior and exterior storage, more fresh water, more insulation and an optional state-of-the-art solar power package, Arcadia has what owners need for longer trips and to get off the grid.

OPTIONAL SOLAR POWER PACKAGE:

Arcadia's Solar X™ leads the industry when comparing solar prep packages. Arcadia is factory-wired to readily expand upon your after-market desires for upgrading to a robust solar system. Solar X™ includes two (2) roof ports supporting the installation of four (4) 300W solar panels, six (6) inverted outlets, inverted wiring to your air conditioner, lithium battery storage compatibility in the front bulkhead, and 10 gauge wiring necessary to power your key solar system components.





NEXT GEN MODERN STYLE

Stunning, bright and residential. Arcadia's Bailey decor will turn heads at the campsite. Cognac-colored seating paired with classic soft plaid accents give off a trendy vibe. Light countertops, wall coverings and wide plank resilient flooring keep it light and airy, ready for you to enjoy every second in this RV.





NEXT GEN MODERN STYLE

Stunning, bright and residential. Arcadia's Bailey decor will turn heads at the campsite. Cognac-colored seating paired with classic soft plaid accents give off a trendy vibe. Light countertops, wall coverings and wide plank resilient flooring keep it light and airy, ready for you to enjoy every second in this RV.





ROOM TO BREATHE

Spacious master suite offers comfort and privacy for a cozy night in.



WELL-DESIGNED STORAGE

Thoughtful interior and exterior storage allows you to pack what you need for extended-stay camping.





ROOM TO BREATHE

Spacious master suite offers comfort and privacy for a cozy night in.



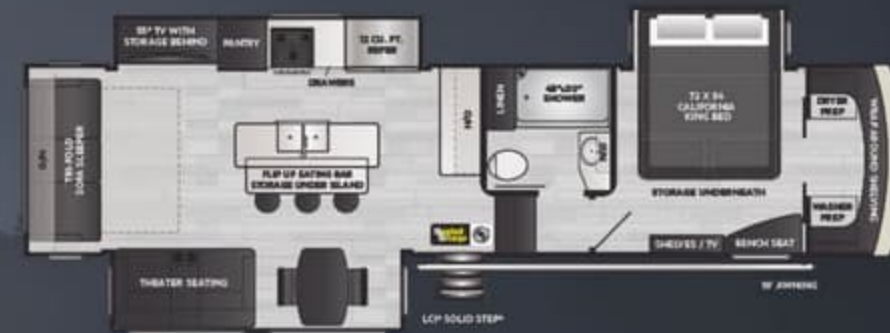
WELL-DESIGNED STORAGE

Thoughtful interior and exterior storage allows you to pack what you need for extended-stay camping.

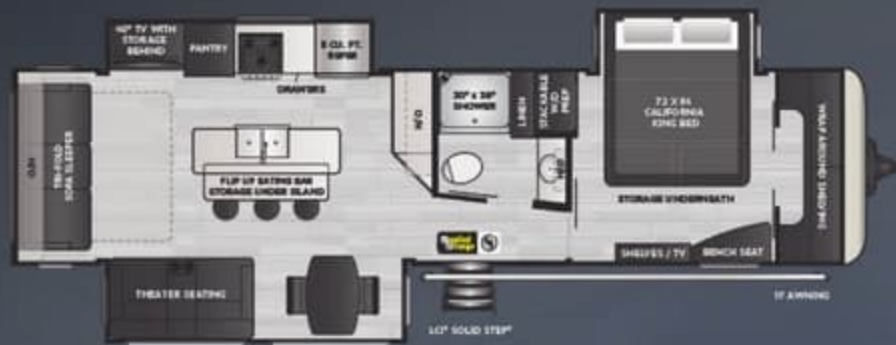




NEW!
3250RL
 FIFTH WHEEL | Rear living, mid-kitchen, wardrobe slide



NEW!
3660RL
 FIFTH WHEEL | Rear living, mid-kitchen, master closet



NEW!
370RL
 TRAVEL TRAILER | Rear living, mid-kitchen, master closet

COMING SOON!

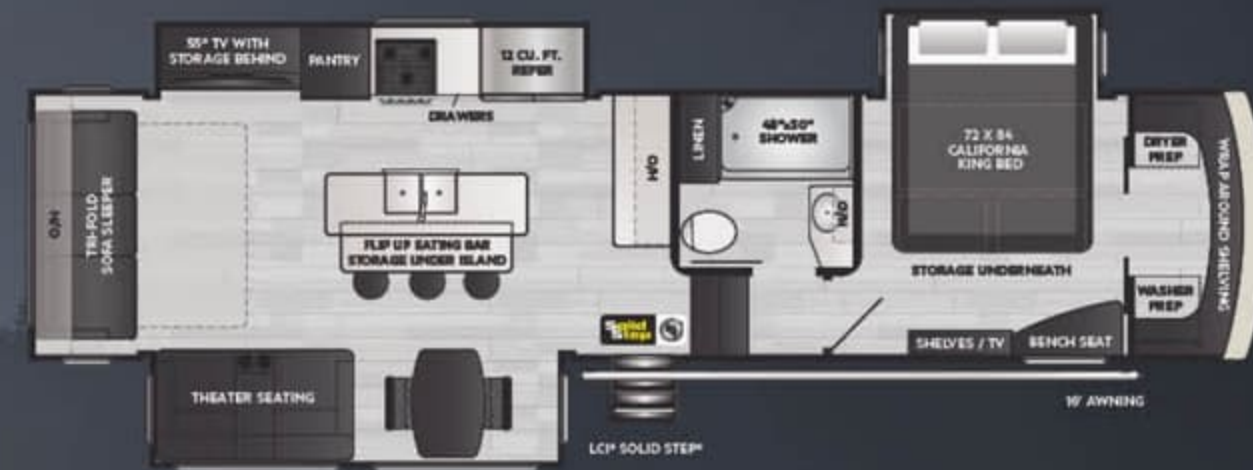
Check keystonerv.com/arcadia
 for new floorplan releases

MODEL	WEIGHT	CARRYING CAPACITY	HITCH WEIGHT	FRESH WATER	WASTE WATER	GRAY WATER	LPG	LENGTH*	WIDTH	HEIGHT	AWNING
3250RL	TBD	TBD	TBD	66	49	88	60	32' 5"	8'	13' 4"	20'
3660RL	10763	2737	1880	107	49	88	60	36' 6"	8'	13' 4"	16'
370RL	TBD	TBD	TBD	66	39	78	60	37' 0"	8'	11' 6"	11'

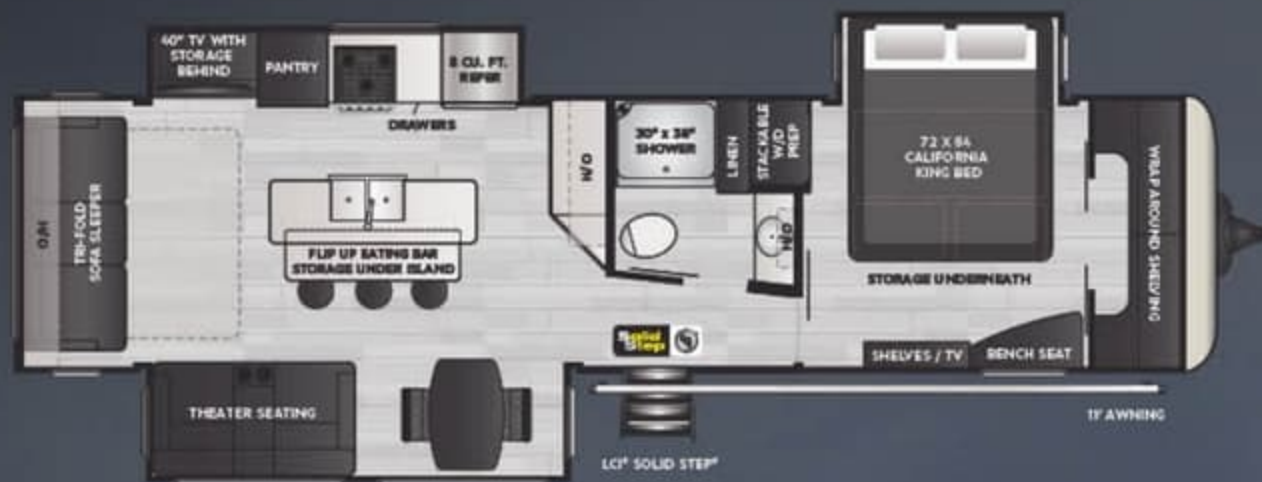
DISCLAIMER: Product information is as accurate as possible as of the date of publication of this brochure. All features, floor plans, and specifications in this brochure are subject to change without notice. Please also consult Keystone's web site at www.keystonerv.com for more current product information and specifications. Tow Vehicle Disclaimer. CAUTION: Owners of Keystone recreational vehicles are solely responsible for the selection and proper use of tow vehicles. All customers should consult with a motor vehicle manufacturer or their dealer concerning the purchase and use of suitable tow vehicles for Keystone products. Keystone disclaims any liability or damages suffered as a result of the selection, operation, use or misuse of a tow vehicle. KEYSTONE'S LIMITED WARRANTY DOES NOT COVER DAMAGE TO THE RECREATIONAL VEHICLE OR THE TOW VEHICLE AS A RESULT OF THE SELECTION, OPERATION, USE OR MISUSE OF THE TOW VEHICLE. *Length is defined as the distance from the centerline of hitch pin/coupler to rear bumper of trailer. Please review owner's manual prior to purchase for more information on service warranties, extended use, towing and maintenance. Owner's manuals can be found at keystonerv.com.



NEW!
3250RL
 FIFTH WHEEL | Rear living, mid-kitchen, wardrobe slide



NEW!
3660RL
 FIFTH WHEEL | Rear living, mid-kitchen, master closet



NEW!
370RL
 TRAVEL TRAILER | Rear living, mid-kitchen, master closet

COMING SOON!

Check keystonerv.com/arcadia
 for new floorplan releases

MODEL	WEIGHT	CARRYING CAPACITY	HITCH WEIGHT	FRESH WATER	WASTE WATER	GRAY WATER	LPG	LENGTH*	WIDTH	HEIGHT	AWNING
3250RL	TBD	TBD	TBD	66	49	88	60	32' 5"	8'	13' 4"	20'
3660RL	10763	2737	1880	107	49	88	60	36' 6"	8'	13' 4"	16'
370RL	TBD	TBD	TBD	66	39	78	60	37' 0"	8'	11' 6"	11'

DISCLAIMER: Product information is as accurate as possible as of the date of publication of this brochure. All features, floor plans, and specifications in this brochure are subject to change without notice. Please also consult Keystone's web site at www.keystonerv.com for more current product information and specifications. Tow Vehicle Disclaimer: CAUTION: Owners of Keystone recreational vehicles are solely responsible for the selection and proper use of tow vehicles. All customers should consult with a motor vehicle manufacturer or their dealer concerning the purchase and use of suitable tow vehicles for Keystone products. Keystone disclaims any liability or damages suffered as a result of the selection, operation, use or misuse of a tow vehicle. KEYSTONE'S LIMITED WARRANTY DOES NOT COVER DAMAGE TO THE RECREATIONAL VEHICLE OR THE TOW VEHICLE AS A RESULT OF THE SELECTION, OPERATION, USE OR MISUSE OF THE TOW VEHICLE. *Length is defined as the distance from the centerline of hitch pin/coupler to rear bumper of trailer. Please review owner's manual prior to purchase for more information on service warranties, extended use, towing and maintenance. Owner's manuals can be found at keystonerv.com.

	TT	1/2 TON	3/4 TON
KEYSTONE EXCLUSIVES			
3-year limited structural warranty	●	●	●
1-year limited base warranty	●	●	●
Color-coded unified wiring standard	●	●	●
4G LTE and Wi-Fi prep	●	●	●
Tuf-Lok™ thermoplastic duct joiners	●	●	●
KeyTV™ multisource signal controller	●	●	●
In-floor heating ducts	●	●	●
Tru-fit™ slide construction	●	●	●
Hyper Deck™ flooring	●	●	●
EXTERIOR			
Revolutionary NGC2™ Next Generation Crawlspace Chassis		●	●
Heated and enclosed water supply lines in chassis		●	●
SpaceSaver™ upper deck chassis design		●	●
Rhino™ pin box chassis design		●	●
Ground Control™ 3.0 auto-leveling system	●	●	●
Curt® ISO-Flex upgraded hitch pin		●	●
Curt® 2" accessory receiver hitch w/ 300 lb. capacity	●	●	●
Curt® HD axles w/ reinforced axle wall tube	●	●	●
Curt® HD axle bearing pack w/ SuperLube™	●	●	●
Curt® HD forward self-adjusting brake assembly	●	●	●
Curt® HD springs and HD axle attachment brackets	●	●	●
Curt® rubberized equalization suspension system	●	●	●
Curt® greasable suspension "wet" bolts w/ bronze bushings	●	●	●
Curt® HD 1/2" axle links	●	●	●
Curt® SolidStep™ with extra-wide top step	●	●	●
15" aluminum wheels	●	●	
16" aluminum wheels			●
Fully laminated, aluminum framed, one-piece sidewalls	●	●	●
Automotive grade, high gloss fiberglass exterior	●	●	●
Aerodynamic, high gloss fiberglass front cap	●	●	●
Max Turn Technology™ front cap design for improved turning radius		●	●
Trunk™ pass-through storage w/ 88 cu. ft. of clutter-free capacity			●
Tie-down rings in pass-through storage		●	●
(2) XL pass-through baggage doors		●	●
Dual pane windows w/ 80% tint	OPTION	OPTION	OPTION
XL safety glass windows w/ 80% tint	●	●	●
Extra-wide 30" entrance door	●	●	●
Upgraded, folding entrance-assist handle	●	●	●
Power awning w/ adjustable arms and light strip	●	●	●

	TT	1/2 TON	3/4 TON
Intelligently designed, stand-alone convenience center	●	●	●
Battery disconnect	●	●	●
Black tank flush	●	●	●
Power water fill connection	●	●	●
Easy winterization connection	●	●	●
Rear observation camera prep	●	●	●
5" pre-engineered roof trusses on 16" centers	●	●	●
3/8" walk-on roof decking	●	●	●
1-piece Superflex™ TPO membrane (18-year limited warranty)	●	●	●
Winegard AIR 360+™ amplified, omni-directional antenna	●	●	●
Roof-mounted satellite connectivity	●	●	●
Door-side, quick-connect external spray port	●	●	●
Soft-shell fender skirts w/ integrated turn signals	●	●	●
Solar X™ Prep with roof ports and inverted outlets	●	●	●
Solar Max™ Solar Package		OPTION	OPTION
INTERIOR			
Designer vinyl flooring throughout	●	●	●
Residential theatre seating w/ heat and massage (select models)	●	●	●
Tufted EZ-sit foam XL tri-fold sofa, converts to a king bed (select models)	●	●	●
USB charging stations at theatre seating	●	●	●
HD flat screen TV with hidden storage	●	●	●
Satellite and cable prep on all TV's	●	●	●
Bluetooth® stereo and DVD surround media player w/ AM/FM	●	●	●
Flush-floor main deck slides including galley slide	●	●	●
Residential "Roman" shades w/ black-out backing	●	●	●
Fireplace w/ remote and 5,000 BTU heating element	●	●	●
LED lighting throughout	●	●	●
KITCHEN			
Free-standing dinette table w/ (4) residential chairs	●	●	●
Residential solid-surface countertops	●	●	●
Stainless-steel double bowl farm sink w/ sink cover	●	●	●
High-rise, pull-down single lever faucet	●	●	●
Custom cabinetry featuring solid wood, painted cabinet doors	●	●	●
Residential, adjustable hidden hinges on cabinet doors	●	●	●
Oversized drawers w/ residential ball-bearing drawer guides	●	●	●
Flip-up, butcher block island work station w/ USB connections	●	●	●
Easy-clean residentially inspired backsplash	●	●	●
Wine rack above microwave	●	●	●
Pull-out spice rack	●	●	●

	TT	1/2 TON	3/4 TON
BATHROOM			
XL linen cabinet	●	●	●
One-piece countertop w/ large, recessed sink bowl	●	●	●
40" shower w/ sliding glass doors	●	●	
48" one-piece fiberglass shower w/ sliding glass doors			●
Porcelain foot-flush toilet	●	●	●
Large skylight	●	●	●
12V exhaust fan	●	●	●
BEDROOM			
Designer vinyl flooring throughout	●	●	●
Stationary bed base for improved storage and durability	●	●	●
60" x 80" queen size bed	●	●	
California king bed (72" X 84")			●
Upgraded Simmons® Serta mattress	●	●	●
Stylish and modern headboard design	●	●	●
(2) XL storage drawers under the bed	●	●	●
(2) LED overhead reading lights	●	●	●
(2) bedside 110-volt outlets	●	●	●
Walk-in master closet w/ additional storage drawers			●
W/D prep for stackable or side-by-side applications			●
Bedroom TV and satellite prep	●	●	●
APPLIANCES AND UTILITIES			
8' gas/electric refrigerator	●	●	
XL 12' gas/electric refrigerator			●
30" DTR residential microwave	●	●	●
Residentially-styled 21" gas range/oven	●	●	●
Coleman® 15,000 BTU A/C	●	●	●
12 gal. gas/electric water heater w/ "quick recovery"	●	●	●
Direct Spark Ignition (DSI) on water heater	●	●	●
50 amp electrical service	●	●	●
(2) 30 lb. propane bottles w/ auto change-over	●	●	●
66 gallons of total fresh water capacity	●	●	
107 gallons of total fresh water capacity			●
Waste tanks: 78 gallons and 39 gallons waste	●		
Waste tanks: 88 gallons gray and 49 gallons waste		●	●
Fully enclosed and insulated holding tanks	●	●	●
Fully enclosed and insulated remote dump valves	●	●	●
35,000 BTU high output furnace	●	●	●
12-volt, solar-friendly refrigerator	OPTION	OPTION	OPTION
2nd 13,500 BTU A/C	OPTION	OPTION	OPTION

	TT	1/2 TON	3/4 TON
KEYSTONE EXCLUSIVES			
3-year limited structural warranty	●	●	●
1-year limited base warranty	●	●	●
Color-coded unified wiring standard	●	●	●
4G LTE and Wi-Fi prep	●	●	●
Tuf-Lok™ thermoplastic duct joiners	●	●	●
KeyTV™ multisource signal controller	●	●	●
In-floor heating ducts	●	●	●
Tru-fit™ slide construction	●	●	●
Hyper Deck™ flooring	●	●	●
EXTERIOR			
Revolutionary NGC2™ Next Generation Crawlspace Chassis		●	●
Heated and enclosed water supply lines in chassis		●	●
SpaceSaver™ upper deck chassis design		●	●
Rhino™ pin box chassis design		●	●
Ground Control™ 3.0 auto-leveling system	●	●	●
Curt® ISO-Flex upgraded hitch pin		●	●
Curt® 2" accessory receiver hitch w/ 300 lb. capacity	●	●	●
Curt® HD axles w/ reinforced axle wall tube	●	●	●
Curt® HD axle bearing pack w/ SuperLube™	●	●	●
Curt® HD forward self-adjusting brake assembly	●	●	●
Curt® HD springs and HD axle attachment brackets	●	●	●
Curt® rubberized equalization suspension system	●	●	●
Curt® greasable suspension "wet" bolts w/ bronze bushings	●	●	●
Curt® HD 1/2" axle links	●	●	●
Curt® SolidStep™ with extra-wide top step	●	●	●
15" aluminum wheels	●	●	
16" aluminum wheels			●
Fully laminated, aluminum framed, one-piece sidewalls	●	●	●
Automotive grade, high gloss fiberglass exterior	●	●	●
Aerodynamic, high gloss fiberglass front cap	●	●	●
Max Turn Technology™ front cap design for improved turning radius		●	●
Trunk™ pass-through storage w/ 88 cu. ft. of clutter-free capacity			●
Tie-down rings in pass-through storage		●	●
(2) XL pass-through baggage doors		●	●
Dual pane windows w/ 80% tint	OPTION	OPTION	OPTION
XL safety glass windows w/ 80% tint	●	●	●
Extra-wide 30" entrance door	●	●	●
Upgraded, folding entrance-assist handle	●	●	●
Power awning w/ adjustable arms and light strip	●	●	●

	TT	1/2 TON	3/4 TON
Intelligently designed, stand-alone convenience center	●	●	●
Battery disconnect	●	●	●
Black tank flush	●	●	●
Power water fill connection	●	●	●
Easy winterization connection	●	●	●
Rear observation camera prep	●	●	●
5" pre-engineered roof trusses on 16" centers	●	●	●
3/8" walk-on roof decking	●	●	●
1-piece Superflex™ TPO membrane (18-year limited warranty)	●	●	●
Winegard AIR 360+™ amplified, omni-directional antenna	●	●	●
Roof-mounted satellite connectivity	●	●	●
Door-side, quick-connect external spray port	●	●	●
Soft-shell fender skirts w/ integrated turn signals	●	●	●
Solar X™ Prep with roof ports and inverted outlets	●	●	●
Solar Max™ Solar Package		OPTION	OPTION
INTERIOR			
Designer vinyl flooring throughout	●	●	●
Residential theatre seating w/ heat and massage (select models)	●	●	●
Tufted EZ-sit foam XL tri-fold sofa, converts to a king bed (select models)	●	●	●
USB charging stations at theatre seating	●	●	●
HD flat screen TV with hidden storage	●	●	●
Satellite and cable prep on all TV's	●	●	●
Bluetooth® stereo and DVD surround media player w/ AM/FM	●	●	●
Flush-floor main deck slides including galley slide	●	●	●
Residential "Roman" shades w/ black-out backing	●	●	●
Fireplace w/ remote and 5,000 BTU heating element	●	●	●
LED lighting throughout	●	●	●
KITCHEN			
Free-standing dinette table w/ (4) residential chairs	●	●	●
Residential solid-surface countertops	●	●	●
Stainless-steel double bowl farm sink w/ sink cover	●	●	●
High-rise, pull-down single lever faucet	●	●	●
Custom cabinetry featuring solid wood, painted cabinet doors	●	●	●
Residential, adjustable hidden hinges on cabinet doors	●	●	●
Oversized drawers w/ residential ball-bearing drawer guides	●	●	●
Flip-up, butcher block island work station w/ USB connections	●	●	●
Easy-clean residentially inspired backsplash	●	●	●
Wine rack above microwave	●	●	●
Pull-out spice rack	●	●	●

	TT	1/2 TON	3/4 TON
BATHROOM			
XL linen cabinet	●	●	●
One-piece countertop w/ large, recessed sink bowl	●	●	●
40" shower w/ sliding glass doors	●	●	
48" one-piece fiberglass shower w/ sliding glass doors			●
Porcelain foot-flush toilet	●	●	●
Large skylight	●	●	●
12V exhaust fan	●	●	●
BEDROOM			
Designer vinyl flooring throughout	●	●	●
Stationary bed base for improved storage and durability	●	●	●
60" x 80" queen size bed	●	●	
"California" king bed (72" X 84")			●
Upgraded Simmons® Serta mattress	●	●	●
Stylish and modern headboard design	●	●	●
(2) XL storage drawers under the bed	●	●	●
(2) LED overhead reading lights	●	●	●
(2) bedside 110-volt outlets	●	●	●
Walk-in master closet w/ additional storage drawers			●
W/D prep for stackable or side-by-side applications			●
Bedroom TV and satellite prep	●	●	●
APPLIANCES AND UTILITIES			
8' gas/electric refrigerator	●	●	
XL 12' gas/electric refrigerator			●
30" OTR residential microwave	●	●	●
Residentially-styled 21" gas range/oven	●	●	●
Coleman® 15,000 BTU A/C	●	●	●
12 gal. gas/electric water heater w/ "quick recovery"	●	●	●
Direct Spark Ignition (DSI) on water heater	●	●	●
50 amp electrical service	●	●	●
(2) 30 lb. propane bottles w/ auto change-over	●	●	●
66 gallons of total fresh water capacity	●	●	
107 gallons of total fresh water capacity			●
Waste tanks: 78 gallons and 39 gallons waste	●		
Waste tanks: 88 gallons gray and 49 gallons waste		●	●
Fully enclosed and insulated holding tanks	●	●	●
Fully enclosed and insulated remote dump valves	●	●	●
35,000 BTU high output furnace	●	●	●
12-volt, solar-friendly refrigerator	OPTION	OPTION	OPTION
2nd 13,500 BTU A/C	OPTION	OPTION	OPTION



3-YEAR LIMITED STRUCTURAL WARRANTY, 1-YEAR LIMITED BASE WARRANTY

Every new Keystone RV comes with the industry's best three-year limited structural warranty AND a one-year limited base warranty. Ask your dealer, visit keystonerv.com, or call Keystone Owner Relations for details.



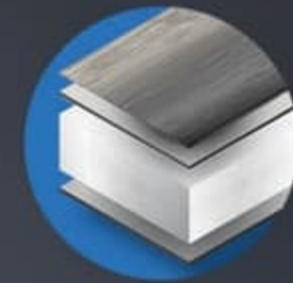
Blade™ High-Performance Air Flow System & Tuf-Lok™ A/C Duct Joiners

Blade™ & Tuf-Lok™ are designed to accelerate air flow, eliminate leakage and failure points, and deliver 360° circulation.



KeyTV™

No more connection guesswork or poor reception. KeyTV offers a game-changing, single point of control of over-the-air, cable, and satellite feeds.



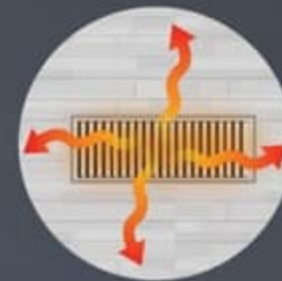
HyperDeck™ High-Performance, Water-Resistant RV Floor

The HyperDeck™ RV floor is more resilient stronger and lighter than traditional laminated wood construction – and it resists water and water damages.



Color-Coded Unified Wiring Standard

Easy-to-trace circuits simplify electrical and entertainment system troubleshooting.



In-floor Heating Ducts

Distributes heat evenly through your coach for superior comfort.



PATENTED MaxTurn Technology™

Frame and hitch design for unparalleled maneuverability.



3-YEAR LIMITED STRUCTURAL WARRANTY, 1-YEAR LIMITED BASE WARRANTY

Every new Keystone RV comes with the industry's best three-year limited structural warranty AND a one-year limited base warranty. Ask your dealer, visit keystonerv.com, or call Keystone Owner Relations for details.



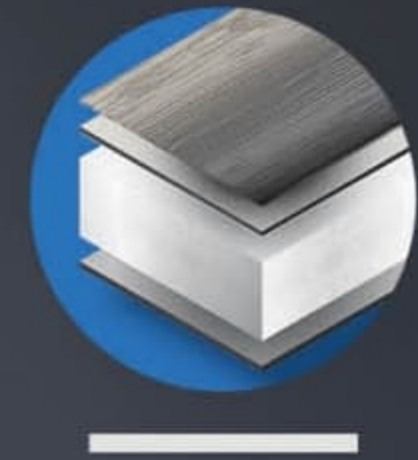
Blade™ High-Performance Air Flow System & Tuf-Lok™ A/C Duct Joiners

Blade™ & Tuf-Lok™ are designed to accelerate air flow, eliminate leakage and failure points, and deliver 360° circulation.



KeyTV™

No more connection guesswork or poor reception. KeyTV offers a game-changing, single point of control of over-the-air, cable, and satellite feeds.



HyperDeck™ High-Performance, Water-Resistant RV Floor

The HyperDeck RV floor is more resilient stronger and lighter than traditional laminated wood construction – and it resists water and water damages.



Color-Coded Unified Wiring Standard

Easy-to-trace circuits simplify electrical and entertainment system troubleshooting.



In-floor Heating Ducts

Distributes heat evenly through your coach for superior comfort.



PATENTED MaxTurn Technology™

Frame and hitch design for unparalleled maneuverability.

Colton RV & Marine
3122 Niagara Falls Blvd
North Tonawanda, NY 14120
(716) 694-0188
www.ColtonRV.com

Colton RV
3443 Southwestern Blvd.
Orchard Park, NY 14127
(716) 957-3250
www.Coltonrv.com