



MIRADA



MIRADA
BY COACHMEN

Colton RV & Marine
3122 Niagara Falls Blvd
North Tonawanda, NY 14120
(716) 694-0188
www.ColtonRV.com

Colton RV
3443 Southwestern Blvd.
Orchard Park, NY 14127
(716) 957-3250
www.Coltonrv.com

CoachmenRV.com

DON'T SETTLE FOR MIDDLE-OF-THE-ROAD.

MIRADA IS FOR MOTORHOME ENTHUSIASTS WHO APPRECIATE THE FINER ASPECTS OF HIGHWAY LIFE – AT A SURPRISINGLY AFFORDABLE PRICE.



Entertaining is a breeze with a beautifully appointed kitchen. The exterior kitchen (available in select floor plans) and outdoor entertainment system are perfect for taking the party outside.

There's even room for the kids to sleep over with the drop-down cabover bunk.



INTERIOR DÉCOR COLOR SELECTIONS



Champagne



Mocha

INTERIOR WOOD COLOR SELECTIONS



Cloud



Shadow



Photography features the Mirada 32LS floorplan with Mocha interior and Cloud cabinetry.



Equipped with a comfortable king mattress and designer headboard with coordinating bedspread and shams, Mirada's bedroom is the perfect place to sleep after a day in the woods or on the town. Convenient side tables keep clutter at bay with USB and power outlets.

The Coach-Pap™ Station allows for storage of CPAP machines and other electronics, located in the cabinet above the bed.

Strip lighting integrated into the ceiling provides more light and a cleaner ceiling.

New square windows provide more airflow and a refined look. Integrated day/night shades create less road noise than traditional blinds.



The bedroom features a smart TV and spacious wardrobe to store clothes for all seasons should the weather turn. There is additional storage behind the TV.



Built from stainless steel and porcelain, the bathroom is both appealingly designed and super-easy to clean.

The large shower features a glass door and overhead lighting, maintaining Mirada's residential feel.

The Mirada is equipped with a dinette that is comfortable and spacious with room for the whole family and converts to accommodate sleeping for extra guests.

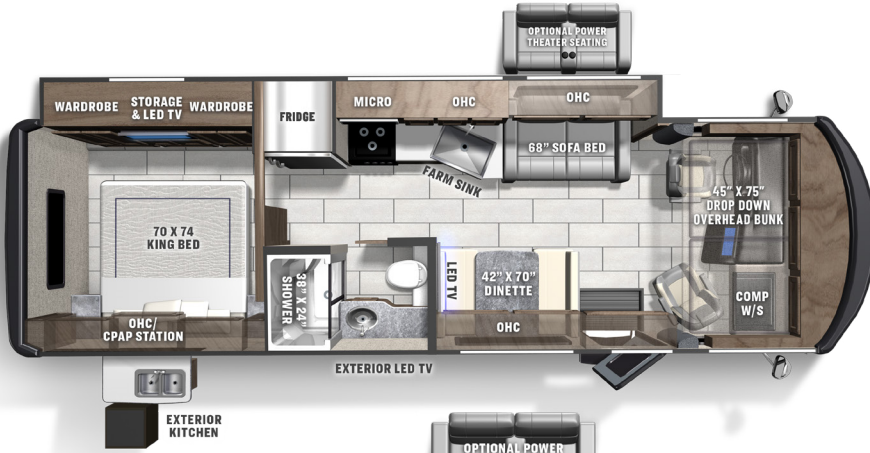


Amenities include an electric fireplace and smart TV (where applicable). Optional theater seating allows you to recline for a relaxing movie experience.

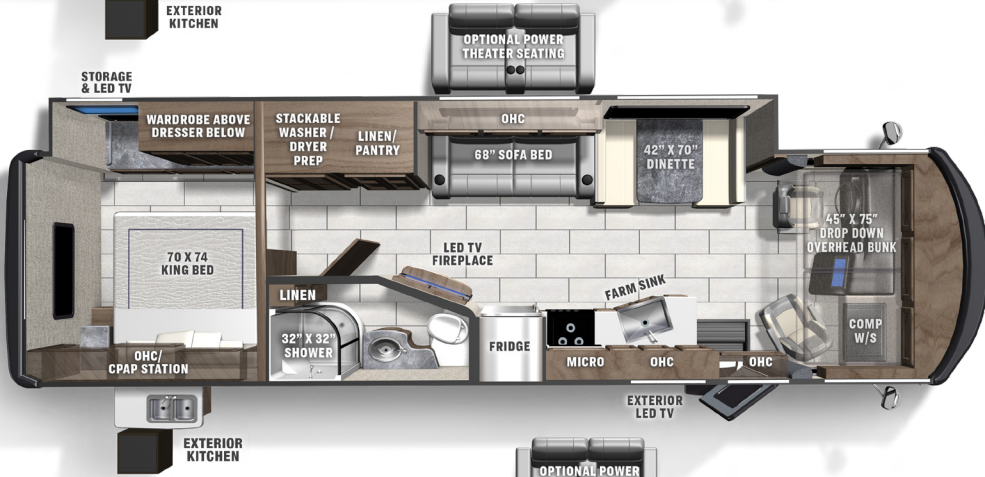


Mirada includes four floorplan options, so you'll have no trouble choosing the one that suits you perfectly.

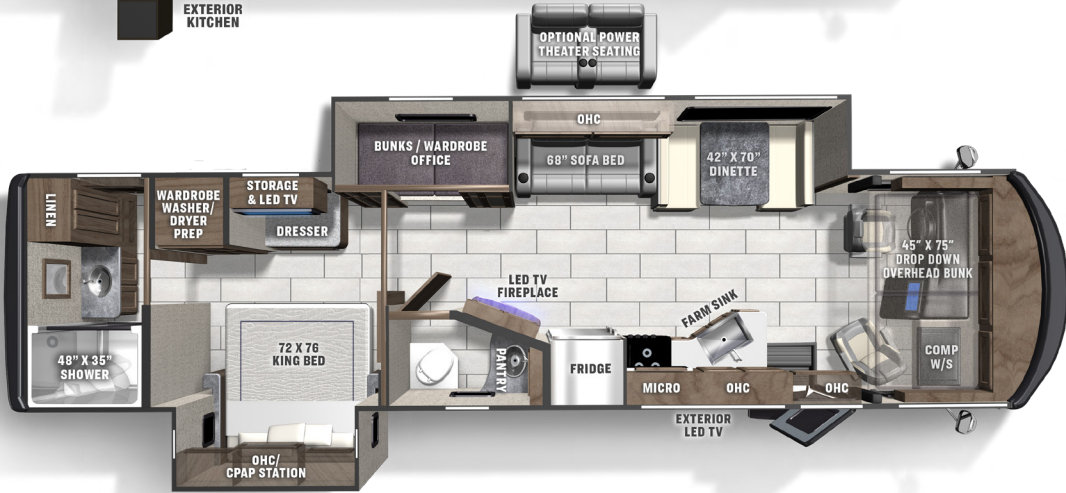
29FW



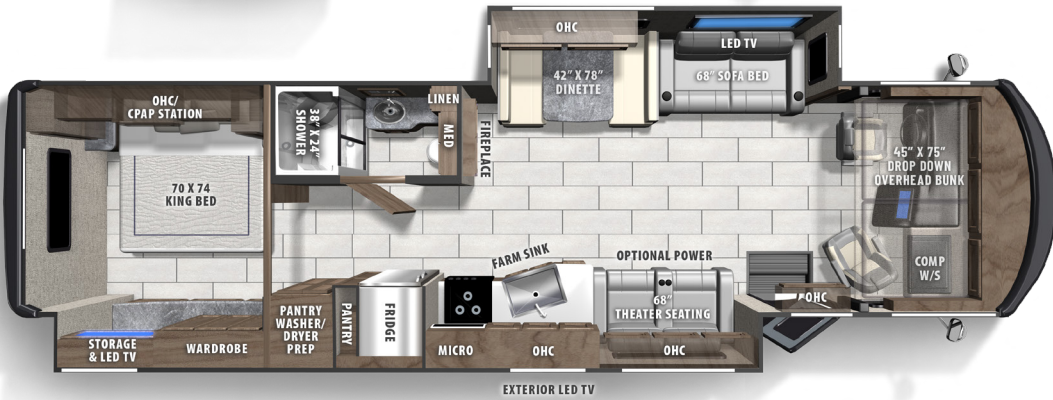
32LS



35ES



35OS



FLOORPLANS

MIRADA SPECIFICATIONS

CLASS A GAS	29FW	32LS	35ES	35OS
FORD ENGINE V-8 7.3L 3-VALVE	335 HP/468 TRQ	335 HP/468 TRQ	335 HP/468 TRQ	335 HP/468 TRQ
WHEEL BASE	190"	228"	242"	242"
GVWR	18,000 lbs	22,000 lbs	22,000 lbs	22,000 lbs
GCWR	23,000 lbs	26,000 lbs	26,000 lbs	26,000 lbs
GAWR FRONT	7,000 lbs	8,000 lbs	8,000 lbs	8,000 lbs
GAWR REAR	12,000 lbs	15,000 lbs	15,000 lbs	15,000 lbs
FUEL CAPACITY	80 gal	80 gal	80 gal	80 gal
LP GAS CAPACITY	20 gal	20 gal	20 gal	20 gal
FURNACE (BTUs)	30,000	30,000	30,000	30,000
EXTERIOR LENGTH (w/o Ladder)	30' 7"	34' 10"	36' 10"	36' 10"
EXTERIOR HEIGHT (w/A/C)	12' 5"	12' 7"	12' 7"	12' 7"
EXTERIOR WIDTH	102"	102"	102"	102"
FRESH WATER	50 gal	70 gal	70 gal	70 gal
GREY WATER	46 gal	45 gal	90 gal	45 gal
BLACK WATER	46 gal	45 gal	90 gal	45 gal
WATER HEATER	6 gal	6 gal	6 gal	6 gal
AWNING SIZE	20'	15' & 10'	17'	20'
TIRE SIZE	19.5"	22.5"	22.5"	22.5"

GVWR (Gross Vehicle Weight Rating) is the maximum permissible weight of the unit when fully loaded. It includes all weights, inclusive of all fluids, occupants, cargo, optional equipment and accessories. For safety and product performance do NOT exceed the GVWR.

GCWR (Gross Combined Weight Rating) is the maximum permissible loaded weight of your motor home and any towed trailer or towed vehicle. Actual GCWR of this vehicle may be limited by the sum of the GVWR and the installed hitch receiver maximum capacity rating; see hitch rating label for detail.

GAWR (Gross Axle Weight Rating) is the maximum permissible weight, including cargo, fluids, optional equipment and accessories that can be safely supported by each axle.

UVW (Unloaded Vehicle Weight)* is the typical weight of the unit as manufactured at the factory. It includes all weight at the unit's axle(s), including full fuel, all fluids and LP Gas. The UVW does not include cargo, fresh potable water, additional optional equipment or dealer installed accessories.

*Estimated Average based on standard build optional equipment.

CCC (Cargo Carrying Capacity)** is the amount of weight available for fresh potable water, cargo, passengers, additional optional equipment and accessories. CCC is equal to GVWR minus UVW. Available CCC should accommodate fresh potable water (8.3 lbs per gallon). Before filling the fresh water tank, empty the black and gray tanks to provide for more cargo capacity.

** Estimated average based on standard build optional equipment

Each Coachmen motorhome is weighed at the manufacturing facility prior to shipping. A label identifying the unloaded vehicle weight of the actual unit and the cargo carrying capacity is applied to every Coachmen motorhome prior to leaving our facilities.

The load capacity of your unit is designated by weight, not by volume, so you cannot necessarily use all available space when loading your unit.

Actual towing capacity is dependent upon your particular loading and towing circumstances, which includes the GVWR, GAWR and GCWR as well as adequate trailer brakes. Please refer to the Operator's Manual of your vehicle for further towing information.

All information contained in this brochure is believed to be accurate at the time of publication. However, during the model year, it may be necessary to make revisions and Coachmen reserves the right to make all such changes without notice, including prices, colors, materials, equipment and specifications as well as the addition of new models and the discontinuance of models shown in this brochure. Therefore, please consult with your Coachmen dealer and confirm the existence of any materials, design or specifications that are material to your purchase decision.

STANDARD FEATURES

INTERIOR APPOINTMENTS

Solid Surface Kitchen Countertop
Premium Linoleum Throughout
Hardwood Cabinet Doors/Flat Panel
Self-Closing Ball Bearing Drawer Guides Throughout
Frameless Tinted Windows with Safety Glass
Reclining/Swivel Pilot Seats
Sofa with Hide-A-Bed (Where Applicable)
Day/Night Shades Throughout
Easy Clean Cockpit Floor
Power Windshield Shade with Manual Side Shade

INTERIOR EQUIPMENT

10" Touch Screen Radio AM/FM Radio
with Bluetooth Apple CarPlay and Android Auto Link Enabled
Pre-Wired for Satellite Dish
Exterior Cable TV Jack and Tailgater Satellite Jack
LP Leak Alarm and Smoke Detector
Carbon Monoxide Detector
Fire Extinguisher
King Jack TV – Radio Antenna
40" Smart TV Main Coach (29FW, 32LS, 35ES)
50" Smart TV Main Coach (350S)
Fireplace Electric (32LS, 35ES, 350S)
Charging Station for Electronic Devices

GALLEY

High Rise Kitchen Faucet
Stainless Steel Farmhouse Sink
Solid Surface Sink Covers
Stainless Residential Refrigerator
Stainless Steel 3-Burner Range with Glass Cover
Stainless OTR Microwave
Tile Backsplash

BATH AND WATER

Stainless Lavatory Sink
Porcelain Toilet with Foot Flush
One Piece ABS Shower Surround
Glass Shower Door
Power Bath Vent
6-Gallon Gas/Electric D.S.I. Water Heater
Demand Water Pump
Skylight Over Shower
Stackable Washer/Dryer Prep
(32LS, 350S, 35ES)
Whole Coach Water Filter (Exc. CSA)

SLEEPING

King Bed
CPAP Cabinet
Designer Headboard
32" LCD TV Bedroom
Drop-Down Front Bunk Bed
Bunk-Office-Wardrobe Room (35ES Only)

ELECTRICAL/HEATING/AC

LED Interior Lighting
30'-50'-Amp Power Cord
55-Amp, 110/12-Volt Power Converter
GFI Circuit
Outside Receptacle (DS)
Emergency Start Switch
Lighted Trunk Boxes
Exterior LED Strip Light
30,000 BTU E.I. Furnace
Dual 15,000 BTU A/C with Heat Pump
Dual Coach Batteries
5.5 KW Gas Generator
Coach Command Center
Automatic Transfer Switch
1200W Inverter (N/A 29FW)
Auto Generator Start (N/A 29FW)
100W Solar Panel with Controller
(Aftermarket Upgradeable to 300W)

AUTOMOTIVE/EXTERIOR

Ford F53 Chassis 7.3L V8
Tilt and Telescoping Steering Wheel
Cruise Control
Traction Control
Sunload Sensor with Auto Dimming
Dash Lighting
Intermittent Wipers
Dash Air Conditioning
19.5 Radial Tires (29FW)
22.5 Radial Tires with Aluminum Rims
(32LS, 35ES, 350S)
Rear Mud Flaps Only
Power Entrance Step-Double
Full Basement with Pass Thru Storage
Radius Trunk Doors with Slam Latch
Fiberglass Front Cap and Rear Cap
Dead Bolt Lock-Entrance Door
26" Radius Entry Door
Power Patio Awning
5,000 Towing Hitch with 7-Way Plug (29FW)
8,000 Towing Hitch with 7-Way Plug
(32LS, 350S, 35ES)
High Definition Back Up and Side Cameras
Power Heated Mirrors
Automatic Leveling Jacks
Slide-Out Room Awning(s)
20-Gallon LP Tank
Valve Stem Extenders
Exterior Kitchen (29FW, 32LS)
Computer Work Station at Passenger Seat
High Gloss Gelcoat Sidelwalls
(with Azdel™ Superlite Composite)
Crowned, Laminated Fiberglass Roof
(with Azdel™ Superlite Composite)
Exterior Propane Hook-Up
Outside Entertainment Center with TV
Auxiliary Dash Fans
Auxiliary Driving Lights

OPTIONAL FEATURES

INTERIOR COLOR SELECTIONS

Champagne
Mocha

INTERIOR WOOD COLOR SELECTIONS

Cloud
Shadow

EXTERIOR COLOR SELECTIONS

Full Body Paint
• Glaucous
• Graphite
• Scarlet

OPTIONAL FEATURES

Power Theater Seating
Washer/Dryer Stackable
(32LS, 350S, 35ES)
Power Driver Seat
Diamond Shield Paint Protection -
(Required with Full Paint)
Sumo Springs - Front/Rear
CSA Up-Fit
CD-MVSA (Canadian Motor Vehicle Safety Act)¹

Notes:

¹Mandatory For All Canadian Provinces



Partial Paint



Full Body Paint – Glaucous



Full Body Paint – Graphite



Full Body Paint – Scarlet

THE COACHMEN ADVANTAGE

What is the Coachmen advantage? It's the collection of unique features offered in a Coachmen motorhome to ensure a smoother ride, a better camping experience, and a motorhome that will last for years.

1. NOBLE SELECT™

Protected by a three-year warranty, these sidewalls have a high-gloss gelcoat finish to prevent fading. They are also 20% lighter than wood substrate sidewalls, provide more occupant cargo carrying capacity, and offer three times the insulation against extreme climates.

2. AZDEL™ COMPOSITE

Most manufacturers use wood sidewalls that can expand, swell, and eventually mold. We use Azdel. It's impervious to water, won't rot or mold, and with less than a 1% chance of delaminating, it ensures the long-term integrity of the sidewalls.

3. REINFORCED LAMINATION

We vacuum bond and pinch roll every sidewall, floor, and roof, then perform a pull adhesion test. Most manufacturers just do one process or the other, but by doing both we improve the strength and longevity of the sidewalls.

4. FOREFRONT OF TECHNOLOGY

We offer the latest in technology by pairing electronics with smart phones. A safer and larger viewing area is achieved when dual-mirroring your smart phone GPS to the 10" radio and backup system. Play your favorite songs from your favorite apps through our 4-channel 500 watt bluetooth amplifier.

5. SIGHT RITE DASH™

Our dashes are angled 20 degrees forward. This increases the line of sight for the driver, and offers the best road visibility on the market.

6. COOL STREAM DUCT™

Our patented duct system evenly disperses air through the whole coach. We use residential ducting instead of Styrofoam because it's antimicrobial, preventing the growth of bacteria and ensuring a cool, clean coach in even scorching heat.

7. DIGITAL OWNER'S MANUAL

Our owner's manuals are easy to access through the Coachmen website or our free app. Supplemented with videos, PowerPoints, and more, it's got all you need to know about your coach.



SCAN HERE

To see available
Standards, Options
and Features!



Coachmen RV, a Division of Forest River, Inc.,
A Berkshire Hathaway Company

423 N. Main St., P.O. Box 30, Middlebury, IN 46540

To learn more about Coachmen RV and our products and see how Coachmen is making the easy life easier, visit www.coachmenrv.com

©Copyright 2023 Coachmen RV a Division of Forest River Inc. - All Rights Reserved.

10/23

CUSTOMER SATISFACTION



www.ForestRiverBuyLocal.com



	24/7 EMERGENCY ROADSIDE ASSISTANCE WITH VEHICLE PURCHASE*	
	TOWING JUMP-STARTS TIRE CHANGES FLUID DELIVERY LOCKOUT SERVICE	WINCH-OUT MOBILE MECHANIC TECHNICAL SUPPORT DEALER LOCATOR SERVICES
		*VALID FOR 1 YEAR FROM DATE OF PURCHASE



Learn More
Scan this barcode using
a QR Reader on your
smart phone to learn
more about Forest River.



A Berkshire Hathaway company.