

CLASS-A

PHAETON



TIFFIN

What's New Summary - Phaeton

WHAT'S NEW

- Three New Fabric Suites (Morocco, Oceanside, & Capri)
- Two new Ultraleather Colors (Trail & Taupe Hills)
- Two New Tile Options (Natural and Contessaora Tile)
- Generation 11 Paint Schemes
- Foot Ledge in Shower on 36 SH & 37 BH
- New Wi-Fi Booster
- Cellular Signal Booster Now Available
- 50th Anniversary Paint Scheme Color Packages
- 50th Anniversary Decal
- Slide Trays for AGM Batteries
- New Accent Panel on 40 IH Galley Wall
- Centralized Entertainment Center Now Located Behind Bedroom TV on 37 BH
- Lithium Battery Now Optional
- Updated Tank Monitoring System
- Updated Furniture Styling
- Truma AquaGo™ Comfort Instant Water Heater Now Controllable Through the Spyder System Control Panels
- Updated Dinette Boothe Seating for Lift Up Seat Storage Access
- New 14.5 Lippert™ On-The-Go™ Ladder
- New Style Pantry with Drawers
- Updated Pantry
- Updated Dinette Computer Workstation Option
- Chrome Faucet Now Available
- Hydraulic Bed Slides Now on 37BH, 40IH, and 44OH

NO LONGER AVAILABLE

- 40 AH, 40 QBH, & 40 QKH Floorplans
- Coastal Sand III, Trend Beige III, and Artists Taupe III Fabric Suites
- Belgian and Cocoon Ultraleather Colors
- Vicinity and Novara Bianco Tile
- Generation 9 Paint Schemes
- L-Shapes Sofa Furniture Options
- Luster Sheen Cabinetry Finish
- Molded-in Shower Seats on 36 SH & 37 BH
- Mobileye® Collision Avoidance System

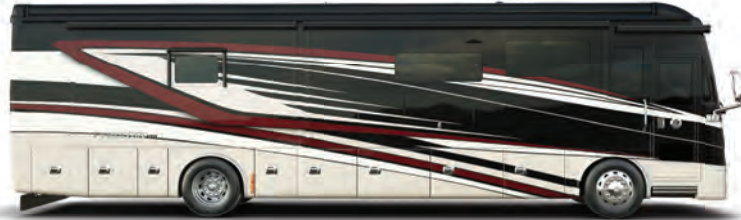
Premium Paint System



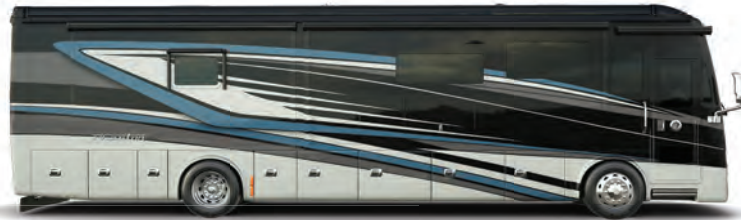
Our eight-step, full-body paint system features premium grade paints sealed with three layers of clear coat with ultraviolet protection. An additional layer of high-performance film protects the front of the coach and select areas.

Our Generation 10 and Generation 11 premium paint schemes now give you 15 different ways to make your 2023 Phaeton your very own. To learn more, visit tiffinmotorhomes.com.

GENERATION 10



G10 MAROON CORAL



G10 EURO BLUE

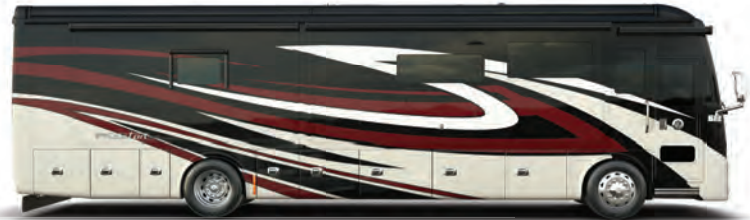


G10 FIRE OPAL



G10 FROSTED GRANITE

GENERATION 11



G11 MAROON CORAL

NEW



G11 EURO BLUE

NEW



G11 FIRE OPAL

NEW

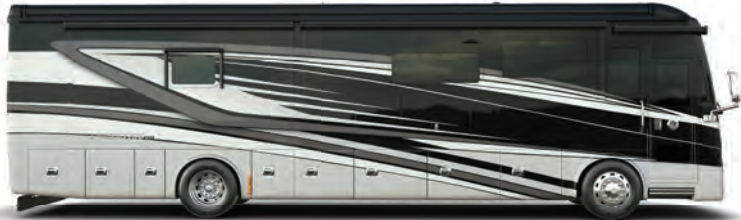


G11 FROSTED GRANITE

NEW

Premium Paint System

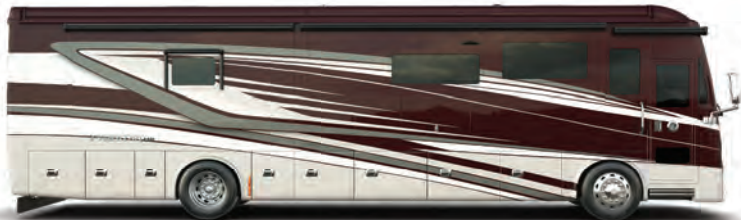
GENERATION 10



G10 NASA



G10 SUNLIT SAND



G10 WHITE MAHOGANY

GENERATION 11



G11 NASA

NEW



G11 SUNLIT SAND

NEW



G11 WHITE MAHOGANY

NEW



50TH ANNIVERSARY

NEW



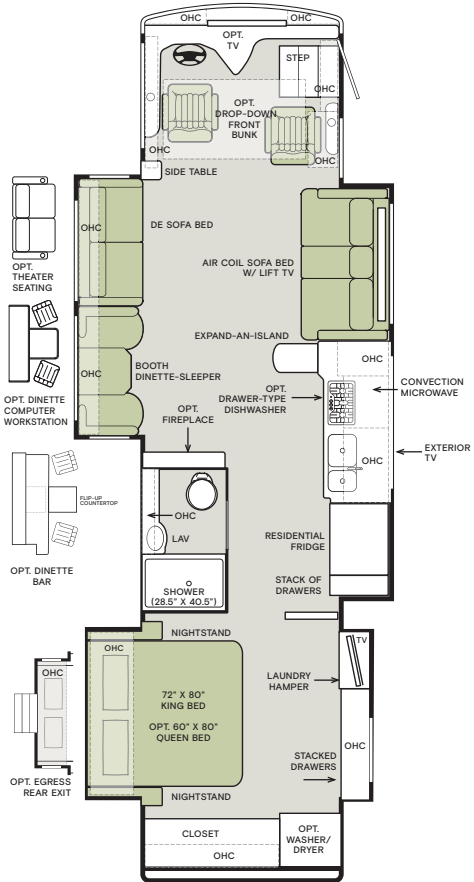
NO LONGER AVAILABLE

• Generation 9 Paint Scheme

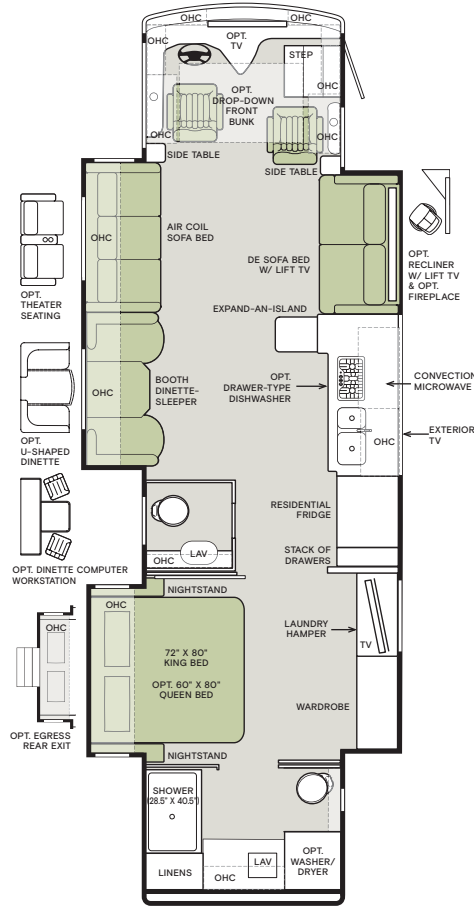
Images shown are representations of paint layouts only and do not reflect all exterior features or options. Colors shown may slightly differ from colors on actual product.

Floor Plans

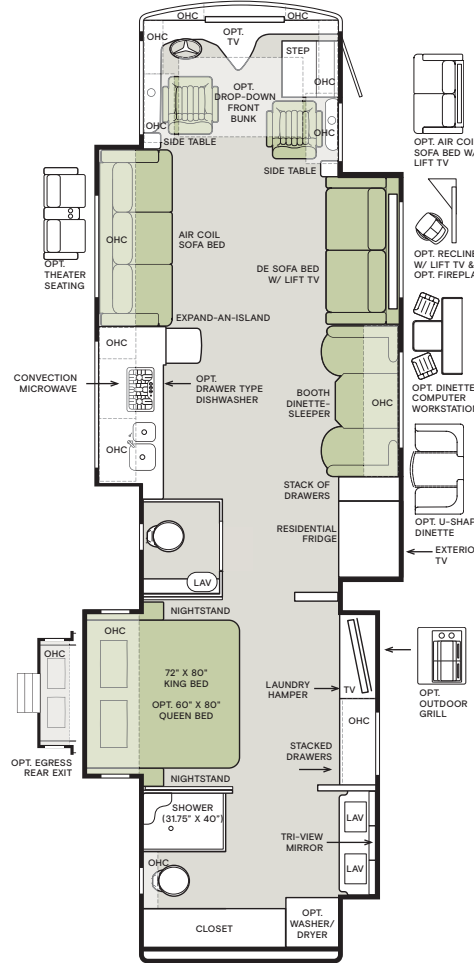
36 SH



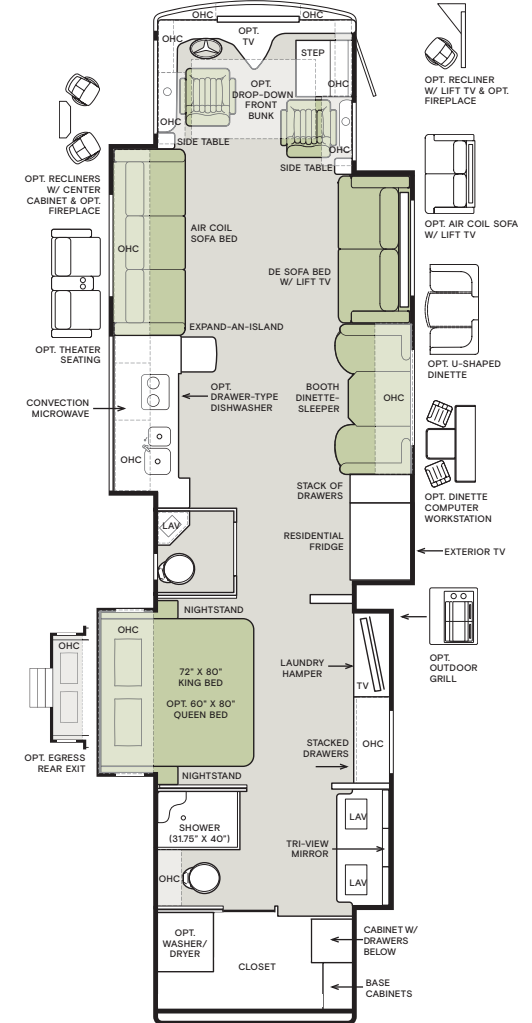
37 BH



40 IH



44 OH



The design of every Phaeton floor plan must meet four essential criteria: Maximum space, Optimal organization, Relaxation plus, and Elegant atmosphere. Tiffin's MORE Plans offer your family the most comfortable layout for life on the road.

If optional furniture combinations are selected, window locations may vary from diagram shown. All options may not be available in every model. Because of progressive improvements and specifications, standard and optional equipment are subject to change without notice or obligation. For a complete and up-to-date list of available options and specifications, visit tiffinmotorhomes.com.

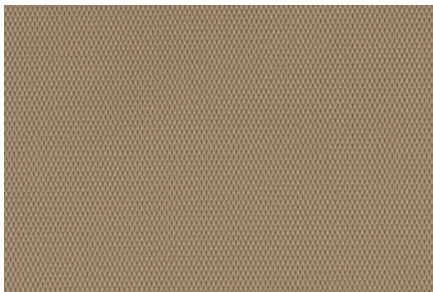
Interior Décor

Make your experience on the road all your own. Express yourself by choosing the interior appointments such as cabinet finishes, flooring, and décor ensembles for every part of your motorhome. In the 2023 Phaeton, you'll be able to travel in style no matter where you go.



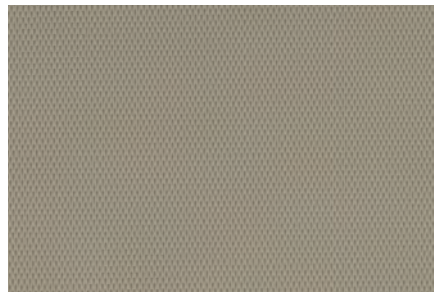
With high-performance functionality and ultimate comfort intertwined, Ultrafabrics® helps to create uniquely sensorial and colorful surroundings.

FURNITURE



TRAIL

NEW



TAUPE HILLS

NEW



Gold Heat® heated tile floors are available on all floor plans. Nothing delivers warmth and comfort in a coach like electric radiant floors.

FLOORING



VICINITY NATURAL (S)
Matte Finish Tile

NEW



CONTESSAORA (O)
Glossy Finish Tile

NEW

CABINETS



AMBER GLAZED ¹



PURE LINEN ¹



SHADOW ²

NO LONGER AVAILABLE

- Belgian Sand Ultraleather

¹ Amber Glazed and Pure Linen cabinetry stains require Vicinity Natural tile.

² Shadow cabinetry stain requires Contessaora tile.

Because of progressive improvements and specifications, standard and optional equipment are subject to change without notice or obligation. For a complete and up-to-date list of available options and specifications, visit tiffinmotorhomes.com.

Colors of interior décor options shown may vary from colors on actual product.

MOROCCO

NEW



WINDOW TREATMENT



BACKSPLASH



COUNTERTOP



LIVING ROOM



MASTER SUITE

OCEANSIDE

NEW



WINDOW TREATMENT



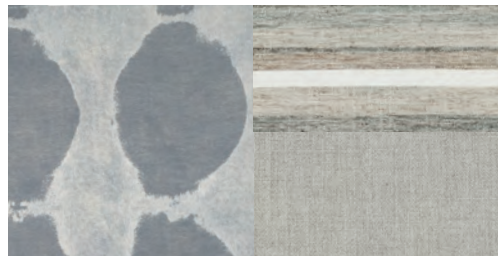
BACKSPLASH



COUNTERTOP



LIVING ROOM



MASTER SUITE

CAPRI

NEW



WINDOW TREATMENT



BACKSPLASH



COUNTERTOP



LIVING ROOM



MASTER SUITE

NO LONGER AVAILABLE

Artist Taupe III, Coastal Sand III and Trend Beige III

Specifications, Features, and Options

KEY : S : Standard Feature | O : Optional Feature; Additional costs may apply | D : Dependent; Availability is dependent on selection of another option | - : Not Available

WEIGHTS AND MEASURES	36 SH	37 BH	40 IH		44 OH	
CHASSIS	Freightliner® Chassis (S)	Freightliner® Chassis (S)	Freightliner® Chassis (S)	PowerGlide® Chassis (O)	Freightliner® Chassis (S)	PowerGlide® Chassis (O)
DIMENSIONS						
Overall Length (approx.) ¹	37' 2"	38' 2"	41' 4"	41' 4"	45'	45'
Overall Width ¹	101"	101"	101"	101"	101"	101"
Overall Height	12' 7"	12' 7"	13' 3"	13' 3"	13' 3"	13' 3"
Minimum Garage Height	14'	14'	14'	14'	14'	14'
Interior Height	83"	83"	83"	83"	83"	83"
Interior Width	96"	96"	96"	96"	96"	96"
Square Footage (approx.) ²	360	375	405	405	440	440
Basement Storage (cubic feet, approx.)	122	122	232	232	232	232
Wheel Base ³	222"	234"	266"	266"	310"	310"
WEIGHT LIMITS						
GAWR—Front (pounds)	14,320	14,320	15,600	15,600	15,600	15,600
GAWR—Rear (pounds)	24,000	24,000	24,000	24,000	20,000	20,000
GAWR—Tag Axle (pounds)	—	—	—	—	10,000	10,000
GVWR (pounds)	38,320	38,320	39,600	39,600	45,600	45,600
Maximum Trailer Weight (pounds) ⁴	10,000	10,000	10,000	10,000	10,000	10,000
Hitch Rating (pounds)	10,000	10,000	10,000	10,000	10,000	10,000
GCWR (pounds)	48,320	48,320	49,600	49,600	55,600	55,600
CAPACITIES						
Fuel Tank (gallons)	100	100	100	100	100	100
DEF Tank Capacity (gallons) ⁵	13	13	13	10	13	10
Fresh Water (gallons)	90	90	100	100	100	100
Black Water (gallons)	50	50	55	55	55	55
Grey Water (gallons)	66	66	100	100	100	100
LPG Tank (gallons) ⁶	36	36	36	36	—	—

- ¹ The approximated coach width and length does not include side view mirrors and rear ladders.
- ² Square footage was calculated with the slide-outs fully extended.
- ³ On tag axle coaches, measurement is taken from the center of the steer axle to the centerline between the drive and tag axle.
- ⁴ Maximum trailer weight is dependent on the loading and towing variables which include the GVWR, GAWR, and GCWR, as well as adequate trailer brakes.
- ⁵ Diesel Exhaust Fluid (DEF) is the active component used in Selective Catalytic Reduction (SCR) engines to reduce nitrogen oxide emissions by 90% to meet EPA standards.
- ⁶ LPG tank can only be filled to 80% capacity.

DRIVER'S COMPARTMENT

- Ultraleather Power Driver and Passenger Seats
- Integrated Seat Belts on Driver and Passenger Seats
- Powered Passenger Seat Footrest
- Tilt and Telescoping Steering Wheel with Integrated Controls
- Adjustable Accelerator and Brake Pedals
- Digital Dash Cluster
- Backlit Dash Switches
- Storage Drawer in Dash
- Dual Dash Fans
- 12-Volt Dash Receptacle
- USB Dash Receptacles
- Driver-focused Wraparound Dash
- Cupholders on Driver and Passenger Side
- Built-in Driver and Passenger Consoles
- Passenger Side Spyder System Control Panel
- Driver and Passenger Map Lights
- One-piece Panoramic Windshield
- Single-motor Intermittent Windshield Wipers
- Automatic LED Headlights
- Side-view Cameras ¹
- Color Back-up Camera Monitor
- Stereo with AM & FM Radio, CD Player, and Satellite Radio ²
- Ceiling Mounted Speakers
- Auxiliary Start Switch
- Driver's Compartment Overhead Cabinets with Wooden Panel Doors
- Manual Opening Driver Side Window
- Solid, Non-opening Passenger Side Window
- Powered Solar and Privacy Windshield Shade
- Manual Solar and Privacy Shades on Side Windows
- Solid Surface Step Well
- Powered Step Well Cover
- Storage Compartment Within Entry Steps
- Recessed Lighting Within Step Well

DRIVER'S COMPARTMENT OPTIONS	36 SH	37 BH	40 IH	44 OH
In-dash Navigation System	O	O	O	O
Front Overhead TV	O	O	O	O
Front Overhead Drop-Down Bunk ³	O	O	O	O
Blind Spot Monitoring System	O	O	O	O

- ¹ Integrated within side-view mirrors and activated by turn signals.
- ² Subscription required for satellite radio.
- ³ Drop-down bunk sleeps one comfortably and will decrease overhead storage capacity. Maximum weight limit of drop-down bunk is 250 pounds.

ELECTRICAL

- Spyder Controls Multiplex System Featuring App Compatibility
- 10.0-Kilowatt Onan® Manual Slide-out Generator
- Generator Slide Tray
- 2,000-Watt Pure Sine Inverter with Auto-Gen Start and Transfer Switching ¹
- Extraordinaire™ Air Conditioning System
- (3) 15,000-BTU Low Profile Air Conditioners with Heat Pumps and Condensation Drains
- 50-Amp Shore Power with Powered Retract Reel
- Prep for Satellite
- Auxiliary Solar Port
- Energy Management System
- Blu-ray™ Player
- Satellite Receiver
- Park Cable and Ground Satellite Hook-up
- HD Over-the-air Antenna ²
- 12-Volt Breaker Panel
- 12-Volt Disconnect Switch
- Rotary Disconnect Switches for House Batteries, Chassis Batteries, and Inverter
- Ground Fault Circuit Interrupter (GFCI) Outlets at Galley, Lavatories, and Sewer Bay
- 110-Volt Exterior Receptacle
- Surge Guard® Transfer Switch
- USB Receptacles Throughout Coach

ELECTRICAL OPTIONS	36 SH	37 BH	40 IH	44 OH
Heating and Cooktop Power Source	Liquid Propane (LP) Coach ³	S	S	S
	All-Electric Coach ⁴	O	O	O
House Batteries	(6) 6-Volt Flooded Lead-Acid Batteries	S	S	S
	(6) 6-Volt Extended Cycle AGM Batteries	O	O	O
	(3) 12-Volt Lithium Batteries	O	O	O
Battery Slide-out Tray ⁵	D	D	D	D
Heat Sources	(2) 30,000-BTU Ducted Furnaces ⁶	D	—	D
	(1) 30,000-BTU and (1) 20,000-BTU Ducted Furnaces ⁶	—	D	—
	Aqua-Hot® 450D Heat Exchanger ⁷	D	D	D
In-motion Satellite Dish ⁸	O	O	O	O
Prewiring for Winegard® Trav'ler™ Satellite	O	O	O	O
Solar Panels	Prep for Solar Panels ⁹	O	O	O
	(3) 200-Watt Solar Panels with (1) 30-Amp Controller	O	O	O
	(6) 200-Watt Solar Panels with (2) 30-Amp Controllers	O	O	O
Wi-Fi Booster UPDATED	O	O	O	O
Cellular Signal Booster NEW	O	O	O	O

- ¹ Automatic generator start capabilities controlled through Spyder Control Multiplex System.
- ² Requires subscription.
- ³ Propane is used to power the ducted furnaces, the water heater, and liquid propane cooktops.
- ⁴ Replaces the ducted furnaces, the Truma AquaGo™ water heater, and liquid propane cooktops with an Aqua-Hot® heat exchanger and induction cooktops. Removes LPG tank. All-electric coaches still require diesel for the engine and either shore power or a generator to operate air conditioning.
- ⁵ Standard with flooded and extended cycle AGM batteries. Not available with lithium batteries.
- ⁶ Standard with LP coach option.
- ⁷ Replaces ducted furnaces when all-electric coach option is selected. Aqua-Hot® heat exchanger provides both heated air and water.
- ⁸ High-definition programming is not available on a domed satellite antenna unless you subscribe to DISH Network®.
- ⁹ Includes docking ports for aftermarket solar panels.

PLUMBING

- Aqua View Showermiser™
- Water Pump Switch Access from Spyder System and Sewer Bay Board
- Water Filter
- Low-point Water Drain Lines
- Black Holding Tank Flush System
- Gravity Water Fill
- Heated Water and Holding Tank Compartment
- SeeLevel™ Tank Monitor **NEW**
- Centralized Exterior Sewer Bay with Gravity Black and Grey Evacuation Ports
- Exterior Rinse Hose with Shower Head
- Sewer Bay Hand Sanitizer and Paper Towel Holders
- Fresh Water Hose with Power Retract Reel

PLUMBING OPTIONS	36 SH	37 BH	40 IH	44 OH
Water Heater	Truma AquaGo™ Comfort Instant Water Heater ¹	D	D	D
	Aqua-Hot® 450D Heat Exchanger ²	D	D	D
Water Heater Bypass System ³	D	D	D	—

- ¹ Now controllable through the Truma control panel and the Spyder System control panels. Standard with LP coach option.
- ² Replaces Truma AquaGo™ Comfort instant water heater when all-electric coach option is selected. Aqua-Hot® heat exchanger provides both heated air and water.
- ³ Standard with LP coach option. Not necessary with all-electric coach option.

Because of progressive improvements and specifications, standard and optional equipment are subject to change without notice or obligation. For a complete and up-to-date list of available options and specifications, visit tiffinmotorhomes.com.

Specifications, Features, and Options (Cont'd)

KEY : S : Standard Feature | O : Optional Feature; Additional costs may apply | D : Dependent; Availability is dependent on selection of another option | - : Not Available

EXTERIOR

<ul style="list-style-type: none"> Full-body Paint with (4) Layers of Clear Coat Seamless One-piece Gel-coat Fiberglass Molded Roof Cap One-piece Molded Gel-coat Fiberglass Front and Rear Caps Rust Protective Undercoating High Performance Protective Film on Front Cap and Select Areas Girard® Powered Door Awning with Integrated LED Lighting Girard® Manual Window Awning Package Girard® Slide-out Toppers Steel Basement Construction Side-Swinging Exterior Storage Doors with Gas Shocks 	<ul style="list-style-type: none"> Lockable Chrome Handles on Compartment Doors Motion-sensor Lights in Cargo Bay 120-Volt and 12-Volt Outlets Inside Cargo Bays Charcoal Carpet Cargo Walls Pass-through Basement Storage Flush, Dual-Pane Windows Daytime Running Lights Docking Lights Exterior Patio Light Chrome Power Heated Side-View Mirrors with Integrated Cameras Exterior TV with Soundbar Fast Charge USB ports within 	<ul style="list-style-type: none"> Exterior TV Compartment Manual Exterior TV Compartment Door Deadbolt Front Entrance Lock Lighted Entry Door Grab Handle Automatic Stainless Steel Double Entry Step Keyless Entry System for Front Entrance and Component Doors Exterior Spyder System Control Panel Mud Flaps Custom Rock Guard Concealed Air Horn Limited Edition 50th Anniversary Decal NEW
---	---	---

EXTERIOR OPTIONS	36 SH	37 BH	40 IH	44 OH	
Awnings	(1) Girard® Side-mounted Powered Patio Awning with Integrated LED Lighting	S	S	S	S
	(2) Girard® Roof-mounted Powered Patio Awnings with Integrated LED Lighting and Dual Pitch Feature	O	O	O	O
Slide Trays ¹	(1) Manual Storage Compartment Slide-out Tray	O	O	O	O
	(2) Manual Storage Compartment Slide-out Trays	-	-	O	O
Pull-out Outdoor Grill ²		-	-	D	D
Lippert™ On-The-Go™ Ladder ³ NEW		O	O	O	O

¹ Trays slide out on both sides of motorhome.

² Option requires at least (1) storage compartment slide-out tray.

³ All units will ship with a Lippert™ On-The-Go™ Prepped Receiver installed.

INTERIOR

<ul style="list-style-type: none"> Handcrafted Cabinet Fascias and Doors with Concealed Hinges (2) Flat-Panel Televisions ¹ Solid Surface Galley Countertop Treated Carpet in Slide-out Floors Handcrafted Slide-out Fascia 	<ul style="list-style-type: none"> Soft Touch Vinyl Ceiling LED Lighting Carbon Monoxide Detector LPG Leak Detector Smoke Detector Fire Extinguisher 	<ul style="list-style-type: none"> Solar and Privacy Shades Soft-closing Drawer Slides Powered Roof Vents Central Vacuum System with VacPan® Automatic Dustpan Interior Grab Handle at Entry Door
---	--	--

INTERIOR OPTIONS	36 SH	37 BH	40 IH	44 OH	
Treated Fabric Suites ²	Morocco NEW	O	O	O	O
	Oceanside NEW	O	O	O	O
	Capri NEW	O	O	O	O
Ultraleathers ³	Taupe Hill NEW	O	O	O	O
	Trail NEW	O	O	O	O
Cabinetry Stain	Amber Glazed ⁴	O	O	O	O
	Shadow ⁵	O	O	O	O
	Pure Linen ⁴	O	O	O	O
Floor Tiles	Vicinity Natural Glazed Porcelain Tile ⁶ NEW	D	D	D	D
	Contessaora Glazed Porcelain Tile ⁷ NEW	D	D	D	D
Washer & Dryer	Prep for Washer and Dryer	S	S	S	S
	Stacked Washer and Dryer	O	O	O	O
Gold Heat® Heated Tile Floor ⁸		O	O	O	O
Bedroom Egress Door		O	O	O	O

¹ Located in living area and bedroom.

² Artist Taupe III, Coastal Sand III and Trend Beige III are no longer available.

³ Belgian and Cocoon are no longer available.

⁴ Amber Glazed and Pure Linen cabinetry stains require Vicinity Natural tile.

⁵ Shadow cabinets must be paired with Contessaora tile.

⁶ Vicinity and Articulo White floor tiles are no longer available. Vicinity Natural is not available with Shadow cabinetry stain.

⁷ Vicinity and Articulo White floor tiles are no longer available. Contessaora is required with Shadow cabinetry stain.

⁸ No heated tile in rear bath on 37 BH.

CHASSIS AND DRIVETRAIN

<ul style="list-style-type: none"> Allison® 3000 MH 6-speed Automatic Transmission with Lock-up Torque Converter Aluminum Wheels (2) 12-Volt Flooded Lead-Acid Chassis Batteries Hydraulic Leveling Jacks 	<ul style="list-style-type: none"> Rear Radiator Front Disc Brakes and Rear Drum Brakes Full Air Brake System with Automatic Slack Adjusters Three-stage Compression Brake ¹ UPDATED Manual Parking Brake Dual Fuel Fill Capable 	<ul style="list-style-type: none"> Tire Pressure Monitoring Adaptive Cruise Control Automatic Traction Control Collision Mitigation with Forward Warning and Active Braking Electronic Stability Control
---	--	---

CHASSIS AND DRIVETRAIN OPTIONS	36 SH	37 BH	40 IH	44 OH	
Chassis	Freightliner® XCM Modular Rail Rear Engine Diesel Chassis	S	S	-	-
	Freightliner® XCR XSH Raised Rail Rear Engine Diesel Chassis	-	-	S	S
	PowerGlide® Rear Engine Diesel Chassis	-	-	O	O
Engine	Cummins® L9 380 HP Diesel Engine with 1,150 lb-ft Torque ²	S	S	S	-
	Cummins® L9 450 HP Diesel Engine with 1,250 lb-ft Torque ³	-	-	O	S
Alternator	160-Amp Alternator	S	S	-	-
	210-Amp Alternator ⁴	-	-	D	D
	240-Amp Alternator ⁵	-	-	D	D
Tires	Front and Rear 275/80R 22.5 Tires	S	S	-	-
	Front and Rear 295/80R 22.5 Tires	-	-	S	S
Suspension	Freightliner® V-Series VFS I-beam Front Suspension	S	S	-	-
	ZF Independent Front Suspension	-	-	S	S
	Freightliner® V-Series V-Ride Rear Suspension ⁵	S	S	D	D
	Reyco® Granning® Air Ride Rear Suspension ⁴	-	-	D	D
Shocks	Custom Tuned Sachs® Shock Absorbers ⁵	S	S	D	D
	Custom Tuned Koni Shock Absorbers ⁴	-	-	D	D
Steerable Tag Axle		-	-	-	S

¹ Now available on both Freightliner® and PowerGlide® Chassis.

² Peak horsepower achieved at 2,200 RPM. Peak torque achieved at 1,200 RPM.

³ Peak horsepower achieved at 2,100 RPM. Peak torque achieved at 1,400 RPM.

⁴ Standard on PowerGlide® Chassis option. Not available on Freightliner® Chassis option.

⁵ Standard on Freightliner® Chassis. Not available on PowerGlide® Chassis option.

DINETTE AND LIVING AREA

DINETTE AND LIVING AREA	36 SH	37 BH	40 IH	44 OH	
Driver Side Dinette	Ultraleather Booth Dinette-Sleeper ¹ UPDATED	S	S	-	-
	Dinette Computer Workstation ² UPDATED	O	O	-	-
	Dinette Bar	O	-	-	-
	Ultraleather U-shaped Dinette	-	O	-	-
	Overhead Dinette Cabinets	S	S	-	-
Driver Side Furniture	Ultraleather DE Sofa Bed ³	S	-	-	-
	Ultraleather Air Coil Sofa Bed ⁴	-	S	S	S
	Theater Seating	O	O	O	O
	(2) Ultraleather Recliners with Center Cabinet	-	-	-	O
	(2) Ultraleather Recliners with Center Cabinet and Fireplace ⁵	-	-	-	O
	Fireplace	O	-	-	-
Passenger Side Dinette	Ultraleather Booth Dinette-Sleeper ¹ UPDATED	-	-	S	S
	Dinette Computer Workstation ² UPDATED	-	-	O	O
	Ultraleather U-shaped Dinette	-	-	O	O
	Overhead Dinette Cabinets	-	-	S	S
Passenger Side Furniture	Ultraleather DE Sofa Bed with Lift TV ³	-	S	S	S
	Ultraleather Air Coil Sofa Bed with Lift TV ⁴	S	-	O	O
	Ultraleather Recliner and Lift TV	-	O	O	O
	Ultraleather Recliner and Lift TV with Fireplace ⁵	-	O	O	O

¹ Piece of furniture sleeps one comfortably. Now with lift-up seat storage access. Includes forward facing seat belts.

² The printer bump-out was removed for more leg room. The keyboard and printer trays have been converted to a drawer and a fixed shelf to maximize storage.

³ Piece of furniture sleeps one comfortably.

⁴ Piece of furniture sleeps two comfortably. Cannot option air coil sofa on both driver and passenger sides.

⁵ Cannot option a fireplace on both driver and passenger sides.

Specifications, Features, and Options (Cont'd)

KEY : S : Standard Feature | O : Optional Feature; Additional costs may apply | D : Dependent; Availability is dependent on selection of another option | — : Not Available

KITCHEN

- Stainless Steel Convection Microwave with Exterior Venting
- Double Bowl Kitchen Sink with Single Lever Faucet and Pull-down Sprayer
- Built-in Soap Dispenser
- Galley Overhead with Pull-out Drawers
- Panoramic Galley Window
- Expand-An-Island
- LED Countertop Lighting
- Full Tile Backsplash
- Solid Surface Galley Countertop, Sink, and Cooktop Cover

KITCHEN OPTIONS		36 SH	37 BH	40 IH	44 OH
Refrigerator	22-Cubic Foot Stainless Steel Residential Refrigerator with French Doors and Bottom Freezer ¹	S	—	—	—
	25-Cubic Foot Stainless Steel Residential Refrigerator with French Doors and Bottom Freezer ¹	—	S	S	S
Cooking Appliances	Three-Burner Liquid Propane Cooktop ²	D	D	D	—
	Two-Burner Induction Cooktop ³	D	D	D	S
Drawer-style Dishwasher		O	O	O	O

¹ Refrigerator volume is approximated.

² Standard with LP Coach option.

³ Replaces three-burner liquid propane cooktop when all-electric coach option is selected.

BATHROOM

- Solid Surface Lavatory Top
- Handheld Shower Head with Slide Bar
- Shower Skylight
- Shower LED Light with Sliding Cover
- Towel and Toilet Paper Holders
- Roof Vent Fan

BATHROOM OPTIONS		36 SH	37 BH	40 IH	44 OH
Number of Bathrooms	(1) Bathroom	S	—	—	—
	(1) Bathroom and (1) Half-bath ²	—	S	S	S
Master Bathroom Sink	(1) Porcelain Master Bathroom Sink	S	S	—	—
	(2) Porcelain Master Bathroom Sinks	—	—	S	S
Toilet	(1) Gravity Flush Toilet	S	—	—	—
	(1) Gravity Flush Toilet and (1) Macerator Toilet	—	S	S	S
Shower UPDATED	One-Piece Molded Fiberglass Shower (28.5" x 40.5")	S	S	—	—
	One-Piece Molded Fiberglass Shower (31.75" x 40")	—	—	S	S
Master Bathroom Medicine Cabinet	Mirrored Medicine Cabinet	S	S	—	—
	Medicine Cabinet with Tri-view Vanity Mirror	—	—	S	S

¹ Added foot ledge and removed molded-in shower seats to allow for more room (36 SH and 37 BH only).

² All half-baths contain a toilet and a solid surface countertop with a single porcelain sink.

BEDROOM

- Under Bed Storage
- Bedside Windows
- Overhead Cabinet with Headboard
- Bed Comforter with Throw Pillows
- Strategically Placed, Handcrafted Privacy Door
- Nightstand with Solid Surface Tops
- Mounted Flat-panel TV
- Centralized Entertainment Center ¹
- Ceiling Fan
- Laundry Hamper

BEDROOM OPTIONS		36 SH	37 BH	40 IH	44 OH
Mattress	Memory Foam King Mattress (72" x 80")	S	S	S	S
	Memory Foam Queen Mattress (60" x 80")	O	O	O	O
Bedroom Storage	Floor-to-ceiling Closet Space	S	—	S	—
	Wardrobe with Drawers Underneath	—	S	—	—
	Walk-in Closet	—	—	—	S
Safe		O	O	O	O

¹ Houses Blu-ray™ player, satellite receiver, and cable TV hook-up.

1

YEAR OR 12,000 MILES
LIMITED WARRANTY

5

YEARS OR 50,000 MILES
DELAMINATION
LIMITED WARRANTY

10


YEARS OR 50,000 MILES
CONSTRUCTION
LIMITED WARRANTY

1

YEAR COACH
ROADSIDE SERVICE

∞

ONGOING
CUSTOMER SUPPORT

FOR PARTS & SERVICE CALL 256.356.0261 OR VISIT TIFFINMOTORHOMES.COM
105 2ND ST NW RED BAY, AL 35582  

Colton RV & Marine
3122 Niagara Falls Blvd
North Tonawanda, NY 14120
(716) 694-0188
www.ColtonRV.com

Colton RV
3443 Southwestern Blvd. 
Orchard Park, NY 14127
(716) 957-3250
www.Coltonrv.com **TIFFIN**
MOTORHOMES

©2022 Tiffin Motorhomes, Inc. Allegro®, Allegro Breeze®, Allegro RED®, Phaeton®, Allegro Bus®, Zephyr®, Wayfarer®, Roughing It Smoothly®, Open Road®, PowerGlide®, and Cahaba® are registered trademarks of Tiffin Motorhomes, Inc. All rights reserved. For all information concerning the limited warranty provided by Tiffin, please refer to the full written limited warranty set forth on the Tiffin website or held by our authorized dealerships. Please note, some interior furnishings not included. Revised: 3/13/23