



RECREATIONAL  
VEHICLES

# SPORTSMEN CLASSIC

ULTRA LIGHTWEIGHT TRAVEL TRAILERS



**DICOR TUFFLEX PVC**  
roof membrane  
w/lifetime warranty  
and now with 3/8"  
walkable roof



Standard **ROOF SOLAR PREP CONNECTION** makes it a breeze for dealers to install a solar panel.



The **OFF-ROAD PACKAGE** includes 15" mud tires with aluminum rims, extra ground clearance, an electronically controlled heated holding tank, and double entry step.



181BH | Ashwood décor

**KEY FEATURES:**

- 3/8" Fully walkable roof
- Dicor Tufflex PVC roof membrane w/lifetime warranty
- 4 Scissor style stabilizer jacks
- Walk-around queen bed (select models)
- Spacious shower



Shown with optional front window

Ultra Lightweight Travel Trailers	130RB	160QB	160RBT	170MB	180BH	180RBT	180TH	181BH	181SS	191BHK
UVW (Unloaded Vehicle Weight)*	2,350	2,960	2,850	2,980	2,880	3,220	3,210	3,180	3,570	3,490
Dry Hitch Weight*	270	400	330	430	290	420	450	400	450	460
Dry Axle Weight*	2,080	2,560	2,520	2,550	2,590	2,800	2,760	2,780	3,120	3,030
CCC (Cargo Carrying Capacity)	450	540	650	520	620	1,280	1,790	470	830	510
GVWR	2,800	3,500	3,500	3,500	3,500	4,500	5,000	3,650	4,400	4,000
Interior Height	78"	78"	78"	78"	78"	78"	78"	78"	78"	78"
Exterior Height w/o A/C (unless noted)**	107"	107"	107"	112"	107"	118"	107"	112"	112"	112"
Exterior Width	84"	84"	84"	84"	84"	84"	84"	84"	84"	84"
Exterior Length***	16' 9"	22'	19' 2"	22'	21' 5"	21' 9"	21' 8"	21' 5"	22' 2"	22' 1"
Refrigerator (cu. feet)	3	8	8	8	8	8	8	8	8	8
Water Heater Cap. (gal. LP w/DSI)	6	6	6	6	6	6	6	6	6	6
Fresh Water Cap. (gal.)	20	20	20	20	20	20	20	20	20	20
Waste Water Cap. (gal.)	26	26	26	26	26	26	26	26	26	26
Gray Water Cap. (gal.)	26	26	26	26	26	26	26	26	26	26
LP Gas Cap. (lbs.)	20	20	20	20	20	20	20	20	20	20
Furnace BTUs (1,000s)	20	20	20	20	20	20	20	20	20	20
Tire Size	15"	15"	15"	15"	15"	15"	15"	15"	15"	15"
Awning	10'	12'	12'	12'	13'	13'	13'	13'	13'	14'

\*This weight reflects the rolling average unit weight for each model. Your trailer weight will vary according to optional equipment. \*\*This exterior height is with A/C. \*\*\* Exterior length is measured from rear of bumper to leading edge of coupler.

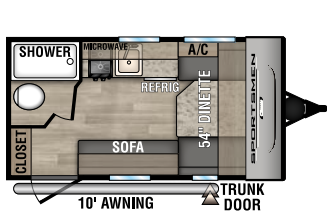
# 2024 SPORTSMEN CLASSIC TRAVEL TRAILERS

## STANDARDS

- KZ Exclusive Tough Shield .024 Exterior Metal
- R-7\* Insulation in Sidewalls
- Front Diamond Plate
- Tinted Windows
- Radial Tires
- Self-Adjust Electric Brakes
- Rear Bumper w/Sewer Hose Storage
- Digital TV Antenna
- Cable Hookup
- City Water Fill
- 12V Converter w/Charger
- LP Tank
- Shower & Toilet
- 6-Gallon LP DSI Water Heater
- Rail-Style Cabinet Doors w/Modern Handles
- Overhead Cabinets
- LED Interior Lights
- Tank Monitor Panel
- Flush Mount 2-Burner Cooktop w/Glass Top
- Microwave
- 8 CU FT 12V Refrigerator (N/A 130RB)
- Single-Bowl Sink

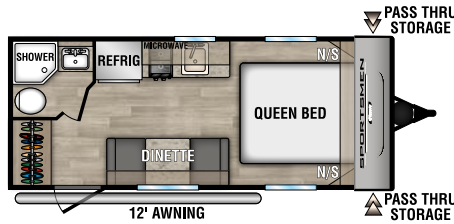
\*Calculated R-Value

NOTE: Options and packages can be found on the website



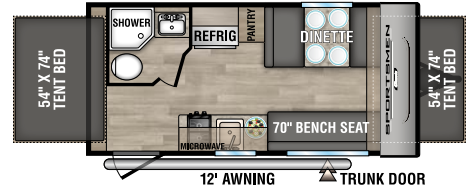
### 130RB

UVW - 2,350 | Exterior Length - 16' 9" | Sleeps - 2



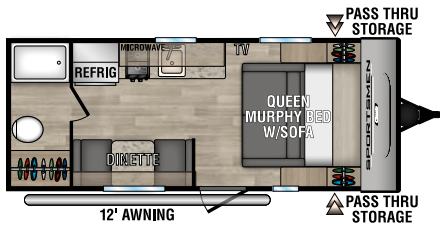
### 160QB

UVW - 2,960 | Exterior Length - 22' | Sleeps - 3



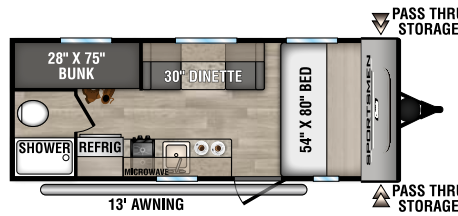
### 160RBT

UVW - 2,850 | Exterior Length - 19' 2" | Sleeps - 6



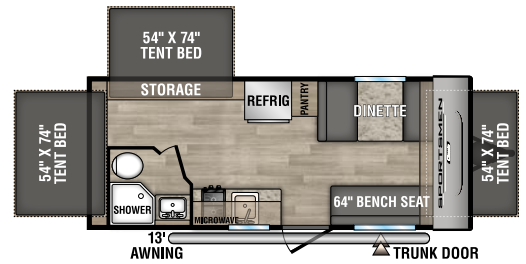
### 170MB

UVW - 2,980 | Exterior Length - 22' | Sleeps - 3



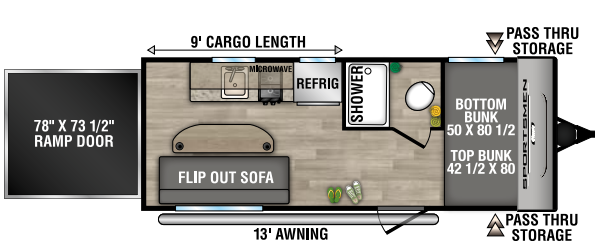
### 180BH

UVW - 2,880 | Exterior Length - 21' 5" | Sleeps - 4



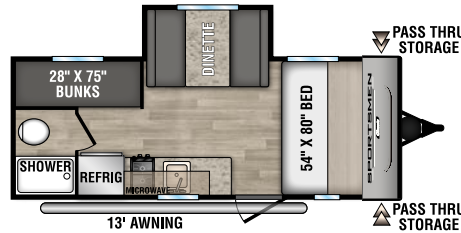
### 180RBT

UVW - 3,220 | Exterior Length - 21' 9" | Sleeps - 8



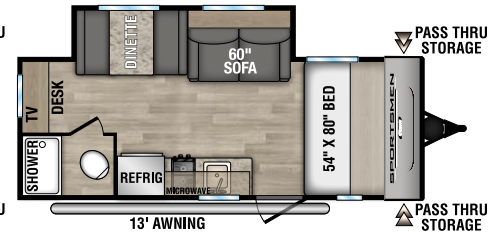
### 180TH TOY HAULER

UVW - 3,210 | Exterior Length - 21' 8" | Sleeps - 4



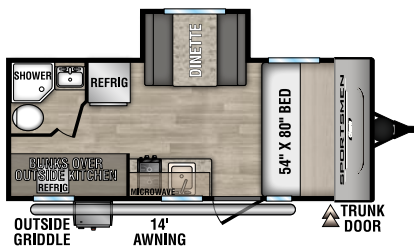
### 181BH

UVW - 3,180 | Exterior Length - 21' 5" | Sleeps - 5



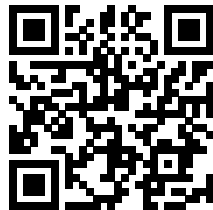
### 181SS

UVW - 3,570 | Exterior Length - 22' 2" | Sleeps - 4



### 191BHK

UVW - 3,490 | Exterior Length - 22' 1" | Sleeps - 5



Dealer:  
Colton RV & Marine  
3122 Niagara Falls Blvd  
North Tonawanda, NY 14120  
(716) 694-0188  
www.ColtonRV.com

Colton RV  
3443 Southwestern Blvd.  
Orchard Park, NY 14127  
(716) 957-3250  
www.Coltonrv.com



985 N 900 W SHIPSEWANA, IN 46565

E: KZ@KZ-RV.COM

WWW.KZ-RV.COM

Due to continual research and advances, manufacturer reserves the right to change specifications, design, price, and equipment without notice, and assumes no responsibility for any error in this literature. Some items shown are not included as standard or optional equipment.

©2023KZ | 11/03/23 | web