

2024 ENTEGRA COACH CONDOR

# Condor

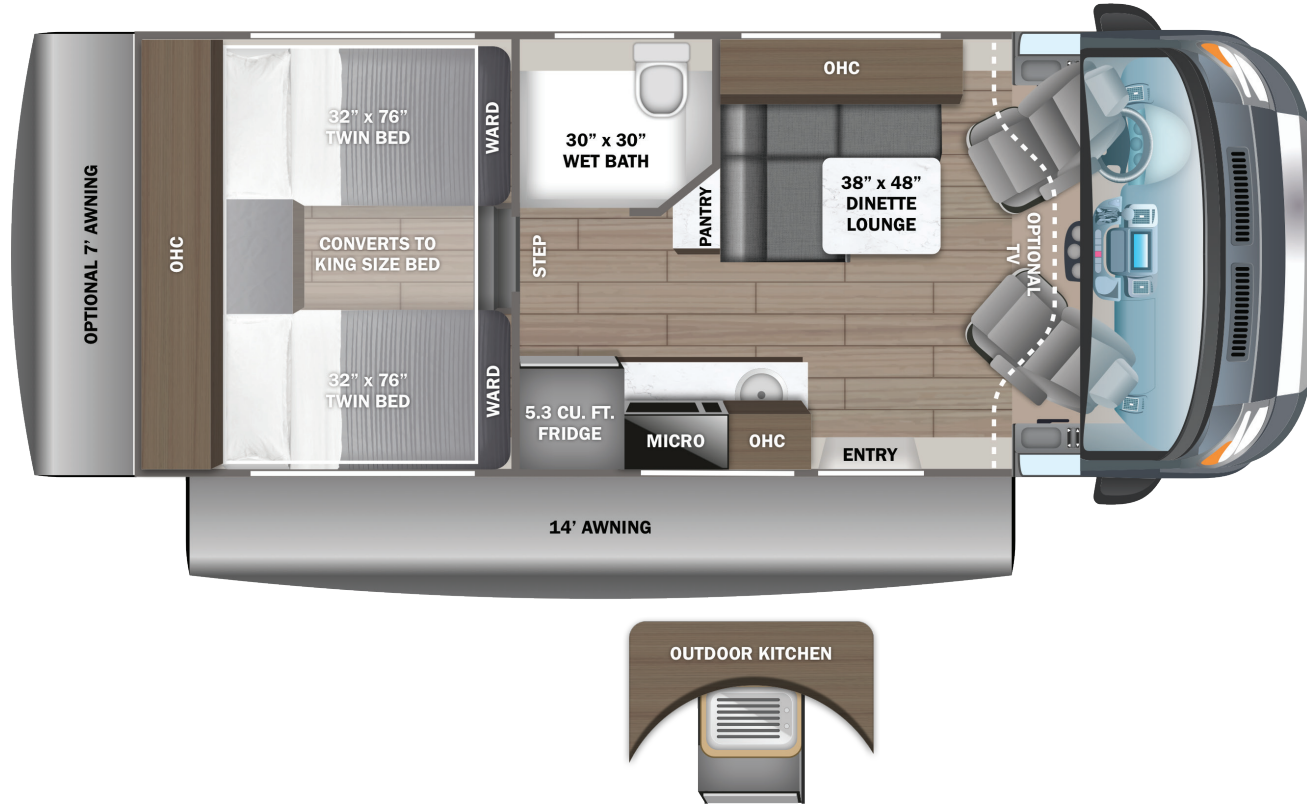
GAS CLASS C MOTORHOME







22T



EXTERIOR SELECTIONS



Standard Graphics



Graphics Delete Option

## CUSTOMER VALUE PACKAGE

- E-Z Drive™: Computer-balanced driveshaft, heavy-duty rear stabilizer bar, standard front stabilizer bar, Hellwig® helper springs and rubber isolation body mounts
- One-piece, seamless, fiberglass front cap
- Van Compass™ front and rear lift kit
- 3.9kWh 12V lithium battery
- 2,000W inverter
- 360W roof mounted solar panel with dual controller
- Expandable side port with second dual bank controller for solar
- All-terrain tires
- Backup camera
- Aqua View® SHOWERMISER™ water management system
- Internal holding tanks

## CHASSIS

- Ford® Transit 350HD AWD chassis
- 156 in. wheelbase
- GVWR - 11,000 lb.
- GCWR- 15,000 lb.
- 3.5L EcoBoost V6 310 HP engine with 400 ft-lb. torque
- 10-speed transmission
- 3.73 limited slip axle
- 250-amp alternator
- Matte black aluminum wheels
- Power anti-lock brakes with power steering
- (2) 12V AGM chassis batteries (70 amp-hr)
- 31 gal. fuel tank (gas)

## EXTERIOR

- TuffShell™ vacuum-bond laminated roof, floor and sidewalls
- Bead-foam insulation (R-24 max roof, R-9 max floor, R-8 max walls)
- One-piece, seamless, fiberglass roof
- Fiberglass exterior walls with partial paint and vinyl graphics
- Heated garage with L-track and (2) 120V charging ports
- Electric patio awning with auto-retract and LED lights
- Roof rack
- Collapsible exterior ladder
- Daytime running headlamps
- Cable TV hookup with RG-6 coax
- Winegard® Connect 2.0 4G/Wi-Fi/digital TV antenna
- Onan® 2,800W gas generator with auto-gen start
- Portable solar plug
- 30-amp electrical service with detachable power cord
- 120V exterior outlet
- 6 gal. propane tank (20 lb.)
- LP quick-connect hookup
- LED-lit holding tank valves
- Winterization drain system
- 12V demand water pump
- Water filtration system
- Outside shower

## COCKPIT

- 12 in. SYNC 4 HD/NAV/IACC multi-function display
- 4-way swivel driver and passenger seats
- Tilt and telescoping steering wheel
- Power-adjusting, heated side-view mirrors
- Intelligent adaptive cruise control
- Lane-keeping system
- Forward collision warning
- Pre-collision assist with automatic emergency braking (AEB)
- Post-collision braking
- SOS Post Crash Alert System™
- Driver and passenger airbags
- Seatbelts for driver/passenger seats and select cab locations
- Safety Canopy® side-curtain airbags
- Ford® AdvanceTrac® with RSC® (roll stability control)
- Side wind stabilization
- Hill start assist
- SecuriLock® passive anti-theft system with engine immobilizer
- Autolocking drive away with crash unlocking
- Remote keyless entry
- FordPass™ Connect
- Tire pressure monitoring system (TPMS)
- Rain-sensing wiper system
- Automatic high-beam headlights
- Wiper-activated headlights
- Power windows and door locks
- Privacy shades for cab windows

## INTERIOR

- Custom-molded ABS cab-over with storage
- Soft-touch vinyl ceiling
- High-intensity LED ceiling lights
- Residential vinyl flooring
- Firefly Multiplex system - wall-mounted touchscreen and mobile app for total coach control
- 13,500 BTU air conditioner
- Aqua-Hot® 12.5G hydronic water and heating system
- Cassette screens and night shades
- (2) twin-size beds with filler cushion converts to king-size bed
- JBL® Flip 5 removable wireless Bluetooth speaker
- Adjustable table with multiple mounts
- Smoke alarm
- Carbon monoxide detector
- Fire extinguisher

## KITCHEN

- 5.3 cu. ft. 12V refrigerator
- Induction cooktop
- Convection microwave
- Stainless steel sink
- Pressed countertops

## BATHROOM

- All-in-one wet bath with shower and cassette toilet
- Shower with curtain surround
- Medicine cabinet with mirror
- Powered roof vent in wet bath

## OPTIONS

- 32 in. Smart LED HD TV with cab and bedroom mounts
- Starlink satellite internet system
- 7 ft. rear awning
- Pull-out exterior kitchen

## WARRANTY



At Entegra Coach, we build our RVs to handle every adventure, then back them with our industry-leading 2+3 limited warranty. Our 2-year limited warranty has you covered for 2 camping seasons. That's 730 days. In addition, our 3-year structural limited warranty has you covered for 3 camping seasons or 1,095 days. You won't find a better limited warranty in the business, because the only strings we attach are those that deliver the ultimate in reliability. For a copy of our 2-year limited + 3-year structural limited warranty with complete terms and conditions, please contact your local Entegra Coach dealer.

It is important for your safety and enjoyment that you are aware of the weights and tow ratings of the RV you select. Consult a competent advisor for questions or advice. Whether you are new to RVing or a veteran, get a feel for the performance of your RV before heading out on the roadways. When you tow a vehicle with your RV, you must drive differently than when you drive a single vehicle. Practice hooking up, driving, backing up and braking in a safe environment or seek out professional instruction. Jayco affixes a weight label to each RV which lists weight information for that vehicle. Refer to that label to verify the vehicle will meet your requirements. Gross Vehicle Weight Rating (GVWR): The maximum permissible weight of the motorhome, including the Unloaded Vehicle Weight (UVW) plus passengers, personal items, all cargo, fluids, options and dealer-installed accessories. The GVWR is equal to or greater than the sum of the UVW and the Cargo Carrying Capacity. Gross Combined Weight Rating (GCWR): The maximum allowable combined weight of the motorhome used as a tow vehicle and the attached towed vehicle.

Floorplan	GVWR (lbs.)	GCWR (lbs.)	Wheel Base	Overall Length	Exterior Height w/ A/C & Satellite	Exterior Width	Interior Height	Fresh Water Capacity (gal.)	Grey Waste Water Capacity (gal.)	Black Waste Water Capacity (gal.)
22T	11,000	15,000	156"	22' 11"	11' 1"	85"	80"	53	51	4.75

Colton RV & Marine  
3122 Niagara Falls Blvd.  
North Tonawanda, NY 14120  
(716) 694-0188  
www.ColtonRV.com

Colton RV  
489 Bushkill Plaza LN #966  
Wind Gap, PA 18091  
(610) 863-5239  
www.ColtonRV.com



Part of Jayco Family of Companies

Entegra Coach, Inc., P.O. Box 460, Middlebury, IN 46540, www.entegracoach.com. See dealer for further information and prices. All information in this brochure is the latest available at the time of publication approval. Entegra Coach reserves the right to make changes and to discontinue models without notice or obligation. Photos in this brochure may show optional equipment and props for photography purposes. RVs built for sale in Canada may differ to conform to Canadian codes. ©2023 Entegra Coach, Inc. Printed in U.S.A. 2032827.2024



entegracoach.com/condor