

Colton RV
North Tonawanda, NY 14120
(716) 694-0188
(800) 628-4889
www.ColtonRV.com

Colton RV
Orchard Park, NY 14127
(716) 957-3250
(800) 628-4889
www.Coltonrv.com



MADE IN THE USA

PROUD TO BE MADE IN THE UNITED STATES OF AMERICA! ALL CROSSROADS PRODUCTS, INCLUDING Z1 MODELS, ARE HAND-CRAFTED BY A SEASONED MIDWEST WORKFORCE DEDICATED TO QUALITY AND INTEGRITY. THE BEST ONLY GETS BETTER WHEN YOU CONSIDER THE METICULOUS ATTENTION TO DETAIL, QUALITY OF COMPONENTS AND VALUE AN AMERICAN MADE PRODUCT BRINGS. YOU CAN CHECK OUT OUR FULL LINE OF PRODUCTS BY VISITING CROSSROADSRV.COM TODAY.

MORE >>> Go see more details on construction, features & benefits at: crossroadsrv.com

CROSSROADS[®]
RECREATIONAL VEHICLES

YOUR LOCAL CROSSROADS DEALER:

CROSSROADS[®]
RECREATIONAL VEHICLES

1140 W. LAKE STREET ☘ TOPEKA, IN 46571 ☘ PH 260 593-3850 ☘ FX 260 593-2088

11/2013



Z1

FAMILY VALUED TRAVEL TRAILERS



Z1 HAS THE RIGHT LOOK!

The Z1 model line was created to support the growing demand for a value-packed travel trailer. Its modern design, full array of user-friendly features, and comforts like home make it appealing to families or any RVer!



291RL in Nutmeg decor



291RL Bedroom shown

FAMILY-FRIENDLY INTERIOR ROOMS

You want a Lightweight packed full of value? Z1 has all of the amenities of home, all in a easy-to-tow, affordable travel trailer camper. Upscale looks, like wood cabinetry, plush sofas and CrossRoad's quality construction add to the value!



291RL in Nutmeg decor



272BH in Cafe decor

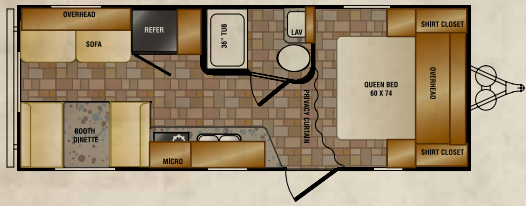


272BH in Cafe decor

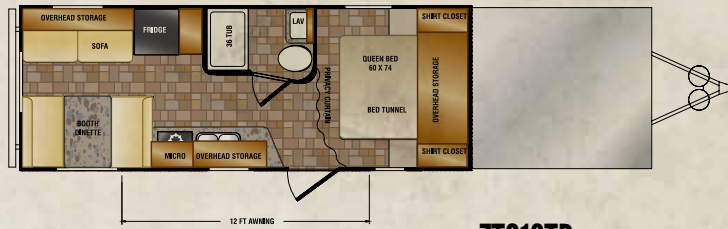
Z1 OFFERS SPACIOUS LIVING

You'll discover simple, yet obvious detailing in the way each Z1 model is thoughtfully designed. Features like spacious rooms and all of the amenities of home come to life here. Slide rooms are well thought out for a spacious, luxurious, yet practical environment.

FLOOR PLANS



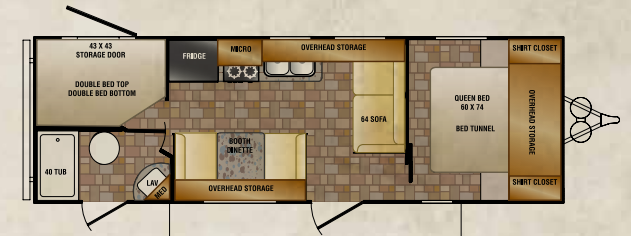
ZT211RD



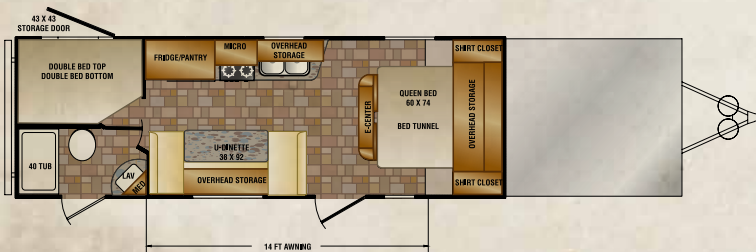
ZT218TD



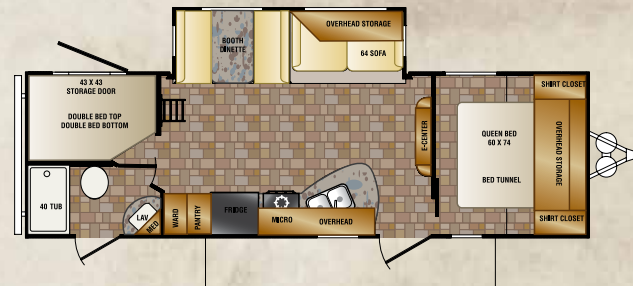
ZT231FB



ZT252BH



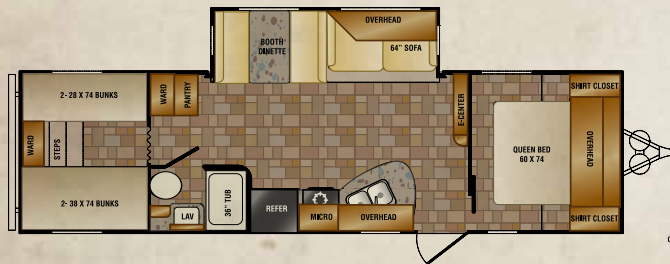
ZT252TD



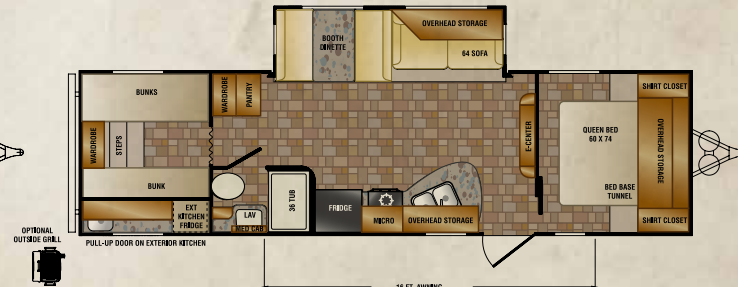
ZT272BH



ZT291RL



ZT301BH



ZT302KB

NOTES:

Z-1	ZT211RD	ZT218TD	ZT231FB	ZT252BH	ZT252TD	ZT272BH	ZT291RL	ZT301BH	ZT302KB
SHIPPING WEIGHT	4034	4998	4452	5116	5682	5806	6040	6228	6604
GVWR	7522	7600	7528	7502	9494	7720	7730	9688	9674
CARRYING CAP	3488	2602	3076	2386	3812	1914	1690	3460	3070
HITCH WEIGHT	522	600	528	502	694	720	730	888	874
AXLE WEIGHT	3512	4398	3924	4614	4988	5086	5310	5340	5730
EXT LENGTH	24' 11"	34' 2"	27' 6"	28' 6"	36' 8"	30' 4"	32' 7"	32' 9"	32' 9"
EXT HEIGHT W/AC	10' 2"	11' 2"	10' 2"	10' 2"	11' 6"	10' 11"	10' 11"	10' 11"	10' 11"
FRESH WATER	40	54	40	40	54	40	40	40	40
BLACK WATER	26	26	26	26	26	26	26	26	26
GRAY	26	26	26	52	52	52	26	26	26
TIRE SIZE	205/75R14C	205/75R15C	205/75R14C	205/75R14C	225/75R15D	205/75R15C	205/75R15C	225/75R15D	225/75R15D

Z1 STANDARDS & OPTIONS

STANDARDS

LIVINGROOM

- Designer valances
- Wood slide-out fascia (varies by floorplan)
- AM/FM/CD stereo system with AUX jacks
- Three décor choices
- Mini blinds
- Sleeper sofa
- Generous storage

KITCHEN

- Range hood with light & exhaust fan
- High rise faucet
- Wall mounted systems monitor panel
- Mortise and tenon shaker style upper and lower cabinet doors

- Cocoa cherry cabinet doors
- Cocoa cherry cabinet drawers
- Microwave oven
- Range with 3 burner cook-top
- 6 cu. ft. Double door refrigerator

BEDROOM

- 60" x 74" Mattress
- Cable TV hook-up
- Coordinated window treatments
- Stairs to bunks (safety stairway) (301BH & 302KB only)

BATHROOM

- Large parchment lavatory bowl

- Spacious shower/tub & one-piece surround
- Foot flush parchment toilet
- Mirrored medicine cabinet
- Shower curtain with curved shower track

EXTERIOR

- New rounded, aerodynamic front end
- 40 gallon fresh water tank (54 on toy deck models)
- Roto-cast holding tanks
- Easy open entry step
- Bumper with drain hose and end caps
- (2) Marine grade exterior speakers
- Aerodynamic cap with stone guard

- Seamless one piece rubber roof
- Molded rain gutters with 3" drip spouts
- 6 gallon DSI gas water heater
- 30" Main radius entry door with screen door

SAFETY

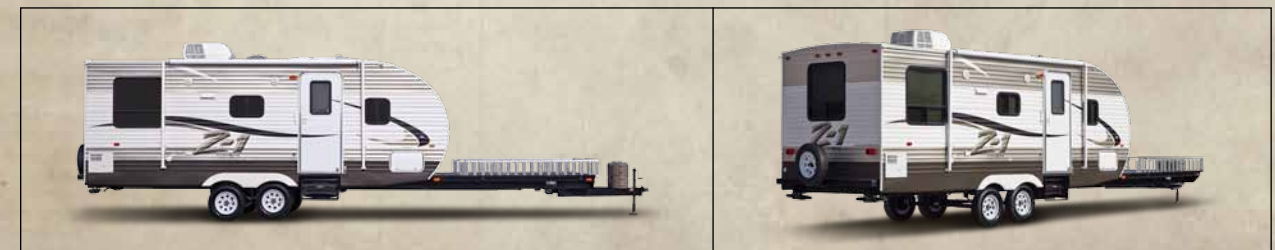
- Safety chains
- Break away switch
- Electric brakes on all wheels
- Carbon monoxide detector
- Fire extinguisher
- GFI electrical outlets
- Tinted safety glass
- Radial tires

Z-1 CONVENIENCE PACKAGE (STANDARD)

- Smoke detector
- LP detector
- 13,500 BTU A/C
- Awning
- Microwave
- Stabilizer jacks (4)
- Power vent over tub
- TV antenna
- Tub surround
- Water heater bypass
- Quilted reversible bedspread
- Wood grain linoleum
- Front diamond plate stone guard

OPTIONS

- Tub skylight
- Outside shower
- Oven
- LP bottle cover
- Spare radial tire
- 15,000 BTU A/C in place of 13,500 BTU A/C
- Skylight in living room/kitchen
- 6 gal. gas/electric DSI water heater
- LED TV
- Denver Supreme Mattress



DISCLAIMER: Product information is as accurate as possible at the date of publication of this brochure. All features, floorplans, and specifications in this brochure are subject to change without notice. Please also consult CrossRoads RV's website at www.crossroadsrv.com for more current product information and specifications. Tow Vehicle Disclaimer. CAUTION: Owners of CrossRoads recreational vehicles are solely responsible for the selection and proper use of tow vehicles. All customers should consult with a motor vehicle manufacturer or their dealer concerning the purchase and use of suitable tow vehicles for CrossRoads RV products. CrossRoads RV disclaims any liability or damages suffered as a result of the selection, operation, use or misuse of tow vehicle. CROSSROADS RV'S LIMITED WARRANTY DOES NOT COVER DAMAGE TO THE RECREATIONAL VEHICLE OR TOW VEHICLE AS A RESULT OF THE SELECTION, OPERATION, USE OR MISUSE OF THE TOW VEHICLE.