

MONTANA HIGH COUNTRY

LUXURY FIFTH WHEEL



KEYSTONE
RV COMPANY

CAMP BETTER

WARRANTY FOR
FULL TIME RVING*

*RESIDENCE AT FULL-TIME RV COMPANY OWNERS PARALLEL FOR LIMITED WARRANTY DETAILS.



MONTANA HIGH COUNTRY 331RL



MONTANA HIGH COUNTRY 335BH

2023 MONTANA HIGH COUNTRY | EXCEPTIONAL FEATURES

- **NEW** 50" SMART TV IN THE LIVING ROOM
- JBL CUBE STEREO WITH MIZONE CONTROL
- HARDWOOD CABINET DRAWERS & DOORS
- SOLID SURFACE COUNTERTOPS IN KITCHEN
- 18 CU. FT. RESIDENTIAL REFRIGERATOR W/ ICE MAKER (OPT. 13 CU. FT GAS/ELECTRIC)
- 24" FURRION STOVE W/ MATCHING STAINLESS STEEL DRAWER
- CENTRAL VACUUM W/ ATTACHMENTS
- STRATEGICALLY PLACED INVERTED OUTLETS
- **NEW** BEL-AIR VINYL FLOORING BY SHAW W/ 7-YEAR COLD CRACKING WARRANTY
- OVERSIZED, 30" X 78" ENTRY DOOR
- JBL EXTERIOR SPEAKERS
- **NEW** ADJUSTABLE 23" DUAL-BURNER SUBURBAN GRIDDLE IN OUTSIDE KITCHENS (SELECT FLOORPLANS)
- DOUBLE PROTECTION FOR HOLDING TANKS W/ 12V PADS & FURNACE HEAT
- DUAL POWER-SAVER A/CS (EACH <12 AMP DRAW)
- BLADE PURE™ HIGH PERFORMANCE AIRFLOW SYSTEM W/ MERV 9 AIR FILTRATION
- NEW 35,000 BTU DOMETIC FURNACE & UP TO 16,500 BTU HEAT PUMP
- 75-GALLON FRESH WATER TANK
- SEAFLO® WATER PUMP, 12 DB QUIETER
- **NEW** 16-GALLON SUBURBAN GAS/ELECTRIC WATER HEATER
- ROAD ARMOR™ SUSPENSION W/ 1/2" SHACKLES, WET BOLTS & BRONZE BUSHINGS
- G-RATED TIRES
- DEXTER® GLADIATOR™ AXLES
- SOLARFLEX™ 400i UPGRADE AVAILABLE W/ OPTIONAL DRAGONFLY ENERGY LITHIUM-ION BATTERIES



MONTANA OWNER'S CLUB

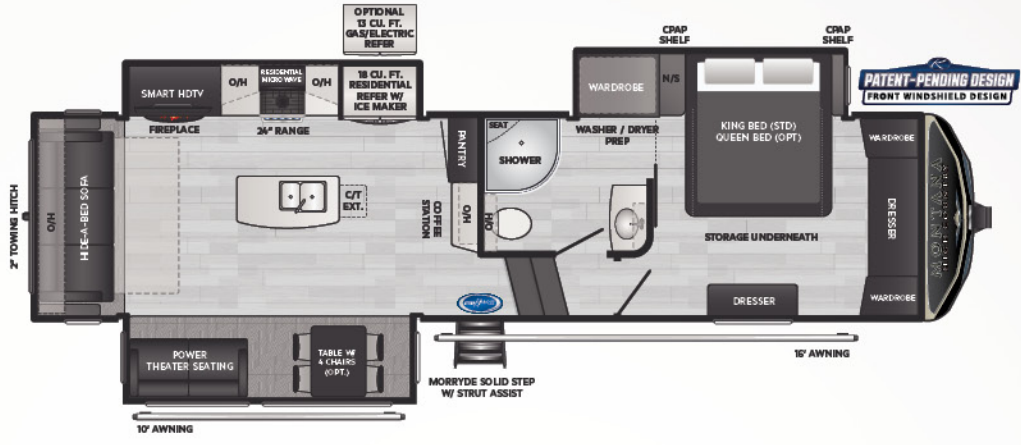
Welcome to the Montana Family! As an owner, you have the opportunity to get involved with the Montana Owner's Club, an independently run group built around this legendary brand. Through the MOC forum, you will be privy to insider tips, technical advice, and the incredible fellowship this community offers. Join fellow members at regional and national rallies, including the club's annual campout near Keystone headquarters in Goshen, Indiana.

TO CHECK OUT MORE AND JOIN THE COMMUNITY,
GO TO WWW.MONTANAOWNERS.COM/FORUMS



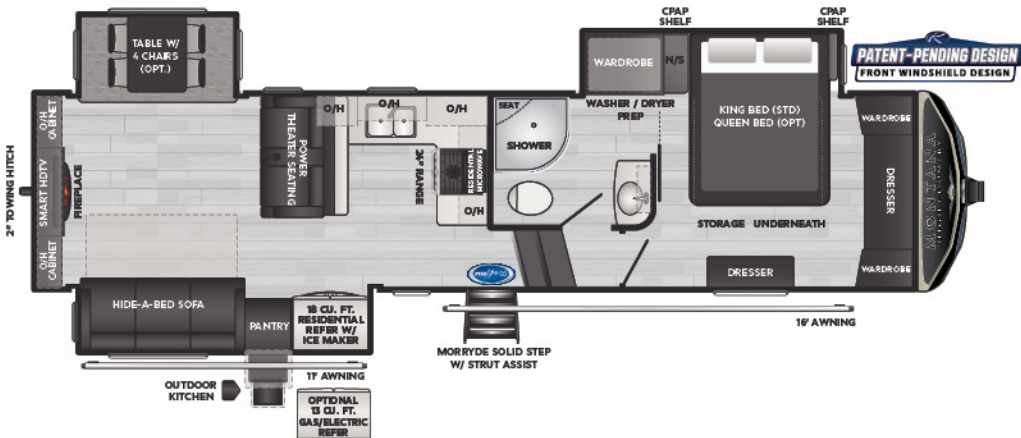
VISIT OUR WEBSITE FOR PHOTOS,
360° TOURS, AND FULL PRODUCT DETAILS





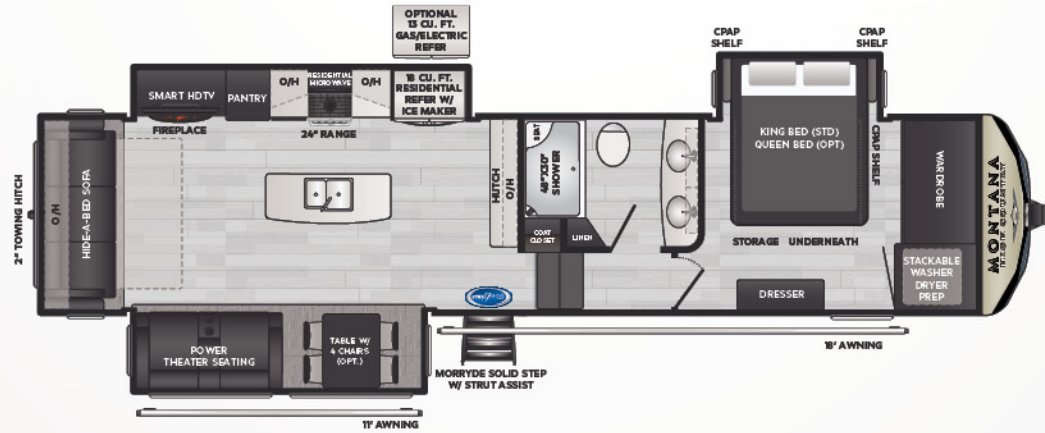
295RL | WEIGHT 11697 | LENGTH 34' 0"

▪ REAR LIVING ROOM, THREE SLIDES



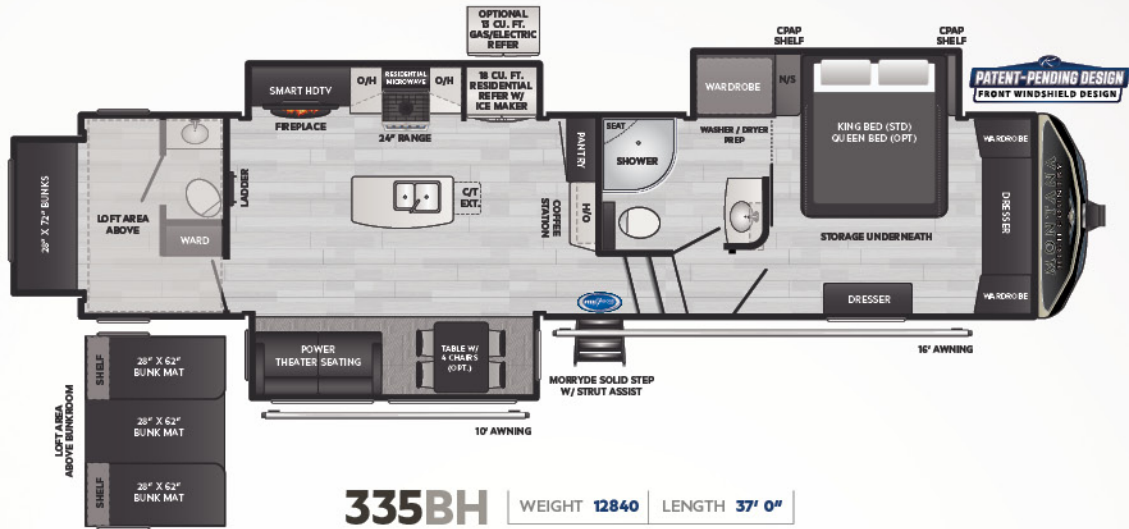
NEW! 311RD | WEIGHT 11785 | LENGTH 35' 0"

▪ REAR DEN, U-KITCHEN, OUTDOOR KITCHEN



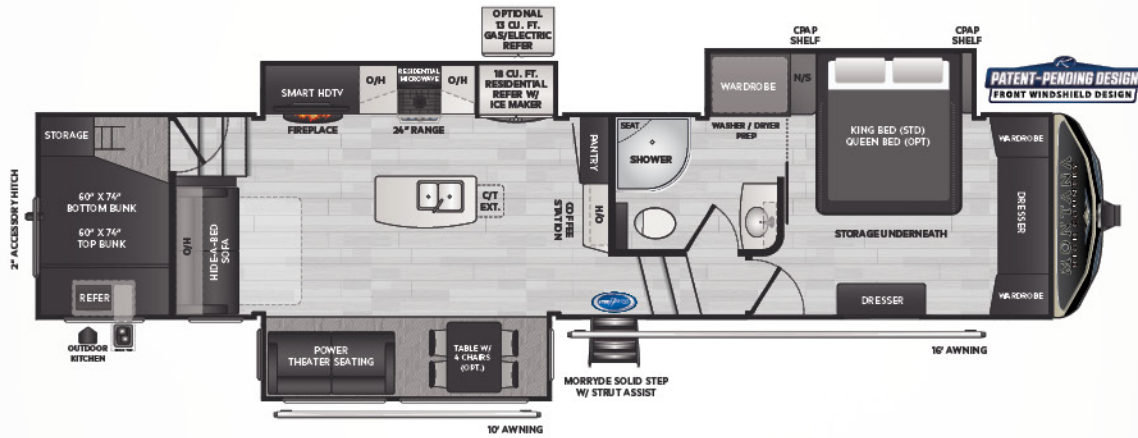
331RL | WEIGHT 12172 | LENGTH 37' 4"

▪ REAR LIVING, BATHROOM W/ DOUBLE VANITY



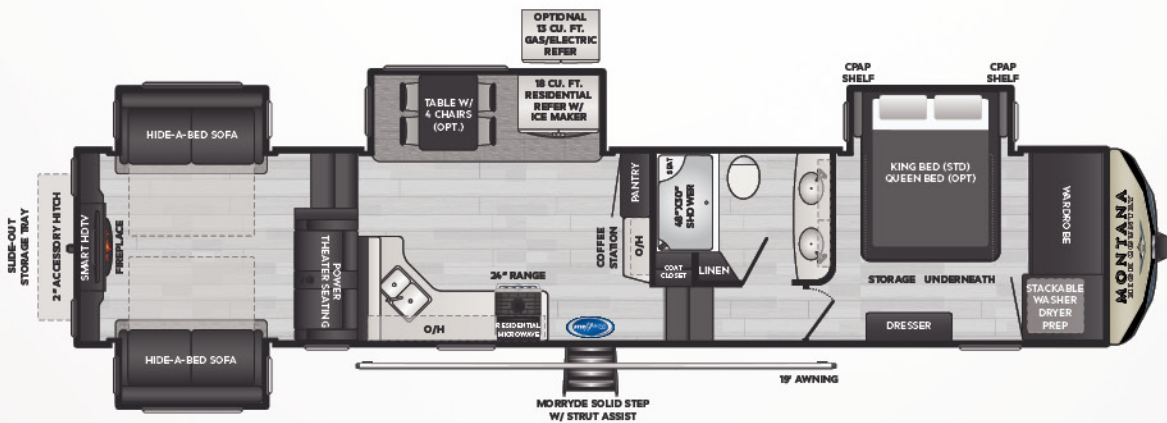
335BH | WEIGHT 12840 | LENGTH 37' 0"

▪ 1-1/2 BATH BUNKHOUSE W/ REAR OVERHEAD LOFT



351BH | WEIGHT 13278 | LENGTH 39' 0"

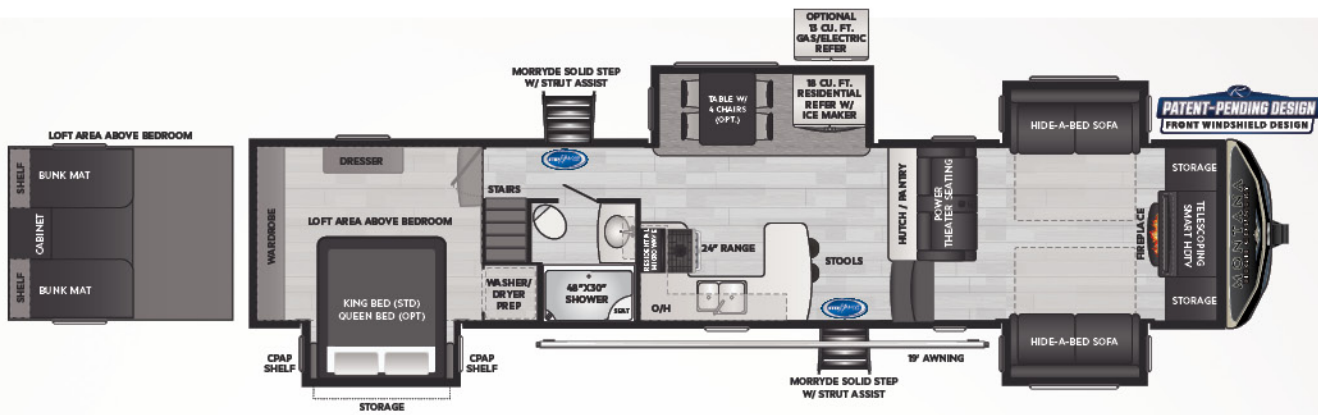
▪ BUNKHOUSE WITH TWO STACKED QUEEN SIZED BEDS



373RD | WEIGHT 13399 | LENGTH 41' 4"

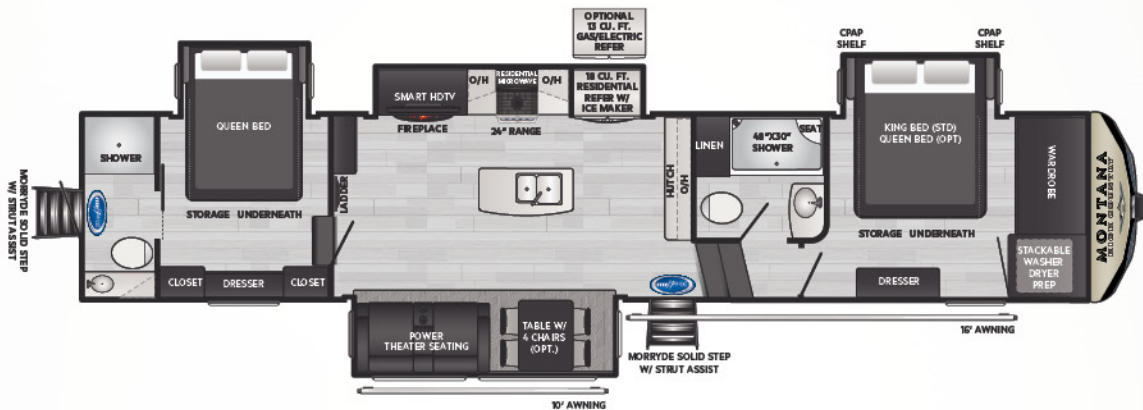
▪ ELEVATED REAR DEN W/ PULL-OUT REAR STORAGE

FLOOR PLANS



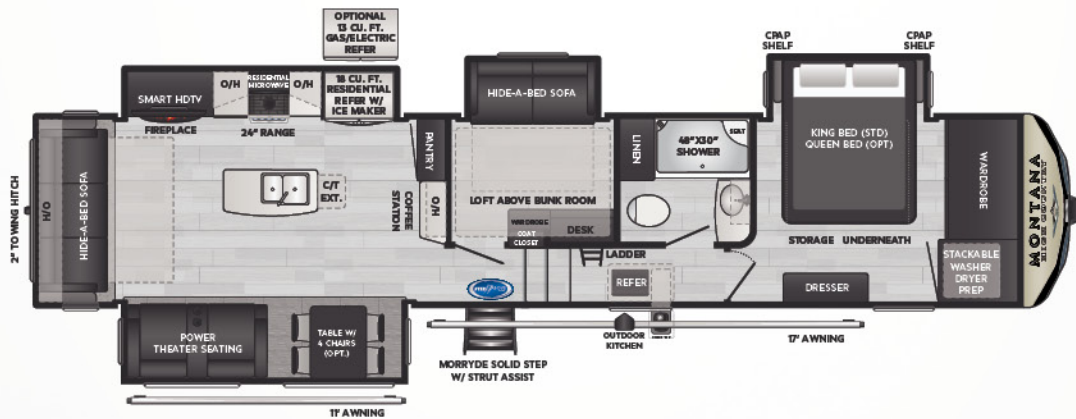
377FL | WEIGHT 1353 | LENGTH 41' 11"

▪ FRONT LIVING ROOM, FOUR SLIDES W/ REAR OVERHEAD LOFT



NEW! 381TB | WEIGHT 14585 | LENGTH 42' 5"

▪ DUAL SUITE, REAR ENTRANCE



385BR | WEIGHT 13794 | LENGTH 40' 9"

▪ BONUS ROOM W/ LOFT & OUTSIDE KITCHEN

| MODEL | WEIGHT | CARRYING CAPACITY | HITCH WEIGHT | FRESH WATER** | WASTE WATER | GRAY WATER | LPG | LENGTH* | WIDTH | HEIGHT | AWNING |
|-------|--------|-------------------|--------------|---------------|-------------|------------|-----|---------|-------|--------|---------|
| 295RL | 11697 | 2603 | 2400 | 91 | 49 | 88 | 60 | 34' 0" | 8' | 13' 4" | 10'/16' |
| 311RD | 11785 | 2415 | 2255 | 91 | 49 | 88 | 60 | 35' 0" | 8' | 13' 4" | 11'/16' |
| 331RL | 12172 | 2028 | 2210 | 91 | 49 | 88 | 60 | 37' 4" | 8' | 13' 4" | 18'/11' |
| 335BH | 12840 | 3160 | 2615 | 91 | 88 | 88 | 60 | 37' 0" | 8' | 13' 4" | 16'/10' |
| 351BH | 13278 | 2722 | 2655 | 91 | 49 | 88 | 60 | 39' 0" | 8' | 13' 4" | 10'/16' |
| 373RD | 13399 | 2601 | 2780 | 91 | 49 | 88 | 60 | 41' 4" | 8' | 13' 4" | 19' |
| 377FL | 13513 | 2987 | 2620 | 91 | 39 | 78 | 60 | 41' 11" | 8' | 13' 4" | 19' |
| 381TB | 14585 | 1915 | 2640 | 91 | 49 | 88 | 60 | 42' 5" | 8' | 13' 4" | 10'/16' |
| 385BR | 13794 | 2706 | 2685 | 91 | 49 | 88 | 60 | 40' 9" | 8' | 13' 4" | 11'/17' |

SOLAR FLEX™

Colton RV & Marine
3122 Niagara Falls Blvd.
North Tonawanda, NY 14120
(716) 694-0188
www.ColtonRV.com

Colton RV
3443 Southwestern Blvd.
Orchard Park, NY 14127
(716) 957-3250
www.ColtonRV.com

Colton RV
489 Bushkill Plaza LN #9665
Wind Gap, PA 18091
(610) 863-5239
www.ColtonRV.com

TAKE CHARGE OF HOW YOU CAMP

EXCEPTIONAL QUALITY, IMPOSSIBLY VERSATILE, SolarFlex™
IS SHATTERING CUSTOMER'S EXPECTATIONS OF FACTORY-INSTALLED SOLAR POWER.
EXCLUSIVELY AVAILABLE ON ALL KEYSTONE RV MODELS.



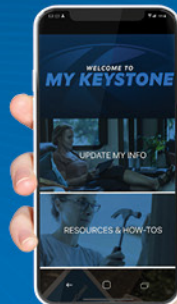
Relieve battery anxiety with legendary Lithium-ion deep cycle batteries – the ultimate replacement for lead acid. Lightweight, reliable, and longer-lasting, Dragonfly Energy batteries are made in the USA and available exclusively from Keystone RV and authorized dealers.

MY KEYSTONE OWNER'S APP

THE ONLY APP YOU'LL NEED...

» MANUALS & QUICK START GUIDES

» HOW-TO VIDEOS



» FIRST-TIME CAMPER'S ADVICE

» ACCESS TO YOUR RV'S MOBILE APPS

Available for iOS
and Android devices.



FOLLOW US FOR THE LATEST!



DISCLAIMER: Product Information is as accurate as possible as of the date of publication of this brochure. All features, floor plans, and specifications in this brochure are subject to change without notice. Please also consult Keystone's web site at www.keystonerv.com for more current product information and specifications. Tow Vehicle Disclaimer. CAUTION: Owners of Keystone recreational vehicles are solely responsible for the selection and proper use of tow vehicles. All customers should consult with a motor vehicle manufacturer or their dealer concerning the purchase and use of suitable tow vehicles for Keystone products. Keystone disclaims any liability or damages suffered as a result of the selection, operation, use or misuse of a tow vehicle. KEYSTONE'S LIMITED WARRANTY DOES NOT COVER DAMAGE TO THE RECREATIONAL VEHICLE OR THE TOW VEHICLE AS A RESULT OF THE SELECTION, OPERATION, USE OR MISUSE OF THE TOW VEHICLE. *Length is defined as the distance from the centerline of hitch pin/coupler to rear bumper of trailer. ** Fresh water capacity includes water heater. Please review owner's manual prior to purchase for more information on service warranties, extended use, towing and maintenance. Owner's manuals can be found at keystonerv.com.

PRINT 09.2022