

TIFFIN

2024

CLASS-A

ALLEGRO BUS





What's New Summary - Allegro Bus

WHAT'S NEW

- Chai, Picasso, and Silver Lake Fabric Suites
- Black Truffle and Platinum Cabinetry
- Starlink Pro Option
- Option for Powered Exterior Storage Compartment Slide-out Trays
- New Bedroom TV Configuration
- Positano II Blanco Glazed Porcelain Tile
- Redesigned Slide-out Fascia
- JBL® Sound System and Advanced Monitor System Now Standard
- Electronic Release Expand-An-Island
- White Ceiling Panels
- Pantry Light
- Firefly Integrations Eclipse Module
- Driver Console Stationary Mount Phone Charger
- New Vented Rear Engine Access Door

THE ULTIMATE ADVENTURE AWAITS.

Move ahead in more ways than one in the new 2024 Allegro Bus. One of our most advanced coaches ever. Comfort and elegance blend seamlessly with breakthrough technology, taking all your travels to the next level. Its PowerGlide Chassis ensures a smooth ride. Once you've arrived to your destination, it's time to enjoy the rich complement of upscale amenities. The MIRA app puts control of most of your coach's systems in the palm of your hand, right on your smartphone. Abundant living space, three HDTVs—including one outside—with a sound bar in the living area and outside, an integrated Spyder Multiplex System, and handcrafted cabinetry are all standard. The kitchen, complete with high-end appliances, expansive counter and storage space makes meal prep easy. Outstanding towing capacity and generous cargo space for your gear round out this exceptionally capable and comfortable coach.

Top to Bottom: 45 OPP Floor Plan Interior shown with Positano II Blanco Glazed Porcelain Tile and Black Truffle Cabinets, 40 IP Floor Plan Interior shown with Catalina Maple Glazed Porcelain Tile and Glazed Canyon Cherry Cabinets



Premium Paint System

Our eight-step full-body paint system features premium grade paints sealed with four layers of clear coat with ultraviolet protection. An additional layer of high-performance film protects the front of the coach and select areas.



Our Generation 11 and Generation 12 premium paint schemes give you 12 different ways to make your 2024 Allegro Bus your very own. To learn more, visit tiffinmotorhomes.com.

GENERATION 11



G11 CINDERWOOD



G11 FIRE OPAL



G11 FROSTED GRANITE



G11 SUNLIT SAND



G11 WATERFALL



G11 WHITE MAHOGANY

GENERATION 12



G12 CINDERWOOD



G12 FIRE OPAL



G12 FROSTED GRANITE



G12 SUNLIT SAND



G12 WATERFALL



G12 WHITE MAHOGANY

Images shown are representations of paint layouts only and do not reflect all exterior features or options. Colors shown may slightly differ from colors on actual product.

Floor Plans



The design of every Allegro Bus floor plan must meet four essential criteria:
 Maximum space, Optimal organization, Relaxation plus, and Elegant atmosphere.
 Tiffin's MORE Plans offer your family the most comfortable layout for life on the road.



If optional furniture combinations are selected, window locations may vary from diagram shown.

All options may not be available in every model. Because of progressive improvements and specifications, standard and optional equipment are subject to change without notice or obligation.

For a complete and up-to-date list of available options and specifications, visit tiffinmotorhomes.com.

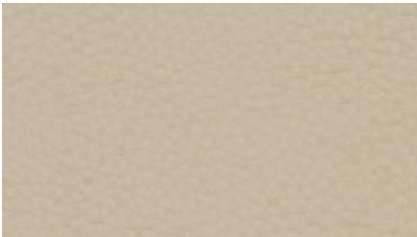
Interior Décor

Make your experience on the road all your own. Express yourself by choosing the interior appointments such as cabinet finishes, flooring, and décor ensembles for every part of your motorhome. In the 2024 Allegro Bus, you'll be able to travel in style no matter where your adventure takes you.

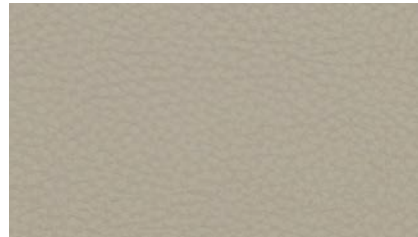


**MR. BOB TIFFIN RECOMMENDS
SILVER LAKE DÉCOR PACKAGE
WITH RICE PAPER FURNITURE,
POSITANO II BIANCO FLOORING,
AND PLATINUM CABINETS.**

FURNITURE



TATAMI MAT



RICE PAPER

FLOORING



POSITANO II BLANCO
GLAZED PORCELAIN TILE

NEW



CATALINA MAPLE
GLAZED PORCELAIN TILE

CABINETS



GLAZED HONEY NATURAL CHERRY



SHADOW



GLAZED CANYON CHERRY



WHITE LINEN



BLACK TRUFFLE

NEW



PLATINUM

NEW

Images shown are representations of paint layouts only and do not reflect all exterior features or options. Colors shown may slightly differ from colors on actual product. Colors of interior decor options shown may vary from colors on actual product.

CHAI

NEW



WINDOW TREATMENT



BACKSPLASH



COUNTERTOP



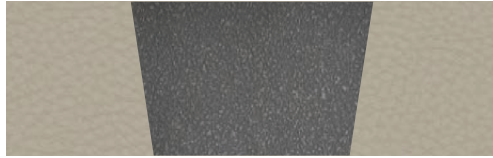
LIVING ROOM



MASTER SUITE

PICASSO

NEW



WINDOW TREATMENT



BACKSPLASH



COUNTERTOP



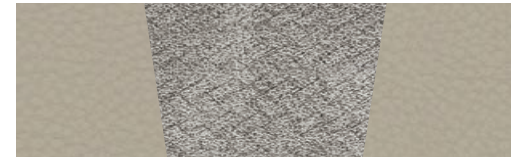
LIVING ROOM



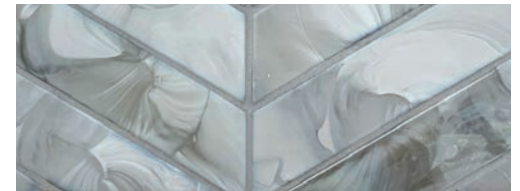
MASTER SUITE

SILVER LAKE

NEW



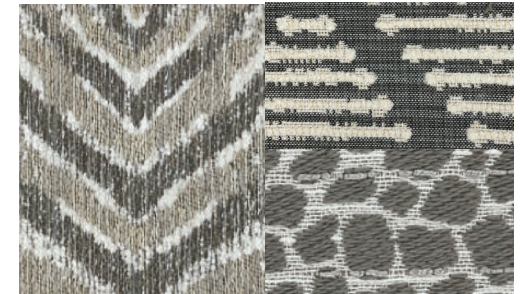
WINDOW TREATMENT



BACKSPLASH



COUNTERTOP



LIVING ROOM



MASTER SUITE

Specifications, Features, and Options

KEY : S : Standard Feature | O : Optional Feature; Additional costs may apply | D : Dependent; Availability is dependent on selection of another option | - : Not Available

WEIGHTS AND MEASURES	35 CP	40 IP	45 FP		45 OPP	
HORSEPOWER	450 HP (S)	450 HP (S)	450 HP (S)	605 HP (O)	450 HP (S)	605 HP (O)
DIMENSIONS						
Overall Length (approx.) ¹	37' 5"	41'	45'	45'	45'	45'
Wheel Base ²	232"	276"	323"	316"	323"	316"
Overall Width ¹	101"	101"	101"	101"	101"	101"
Overall Height	13' 3"	13' 3"	13' 3"	13' 3"	13' 3"	13' 3"
Minimum Garage Height	14'	14'	14'	14'	14'	14'
Interior Height	83"	83"	83"	83"	83"	83"
Interior Width	96"	96"	96"	96"	96"	96"
Basement Storage (cubic feet, approx.)	180	229	257	237	257	237
Square Footage (approx.) ³	365	405	440	440	440	440
WEIGHT LIMITS						
GAWR-Front (pounds)	17,000	17,000	18,000	18,000	18,000	18,000
GAWR-Rear (pounds)	24,000	24,000	23,000	21,000	23,000	21,000
GVWR (pounds)	41,000	41,000	52,000	52,000	52,000	52,000
Maximum Trailer Weight (pounds) ⁴	10,000	10,000	15,000	20,000	15,000	20,000
Hitch Rating (pounds)	10,000	10,000	15,000	20,000	15,000	20,000
GCWR (pounds)	51,000	51,000	67,000	72,000	67,000	72,000
CAPACITIES						
Fuel Tank (gallons)	150	150	150	150	150	150
DEF Tank (gallons) ⁵	10	10	10	15	10	15
Fresh Water (gallons)	100	100	100	100	100	100
Grey Water (gallons)	100	100	100	100	100	100
Black Water (gallons)	55	55	55	55	55	55
QUANTITIES						
Number of Slideouts	3	4	4	4	3	3
Sleeping Capacity ⁶	2 to 3	2 to 4	2 to 5	2 to 5	3 to 5	3 to 5
Sleeping Areas ⁶	1 to 2	1 to 3	1 to 3	1 to 3	2 to 3	2 to 3
Seat Belts ⁶	4	4 to 8	4 to 9	4 to 9	7 to 10	7 to 10
Seating Capacity ⁶	6	7 to 10	7 to 11	7 to 11	9 to 12	9 to 12

¹ The approximated coach width and length does not include side-view mirrors and rear ladders.

² On tag axle coaches, measurement is taken from the center of the steer axle to the centerline between the drive and tag axle.

³ Square footage was calculated with the slide-outs fully extended.

⁴ Maximum trailer weight is dependent on the loading and towing variables which include the GVWR, GAWR, and GCWR, as well as adequate trailer brakes.

⁵ Diesel Exhaust Fluid (DEF) is the active component used in Selective Catalytic Reduction (SCR) engines to reduce nitrogen oxide emissions by 90% to meet EPA standards.

⁶ Dependent on furniture and dinette options.

CHASSIS AND DRIVETRAIN

- PowerGlide® Raised Rail Rear Engine Diesel Chassis
- Two-wheel Drive
- Aluminum Wheels
- Front and Rear 315/80R 22.5 Tires
- Combination Valid™ Air Leveling System with Hydraulic Leveling Jacks
- Integrated Leveling Controls Through Valid™ Instrument Cluster
- ZF Independent Front Suspension
- Front Sway Bar
- Reyco® Granning® Air Ride Rear Suspension
- Custom Tuned Koni Shock Absorbers
- Side-mounted Radiator
- Front and Rear Disc Brakes ¹ **NEW**
- Full Air Brake System with Automatic Slack Adjusters
- Three-stage Compression Brake
- Manual Parking Brake
- Air Force One Tow Vehicle Brake System
- Dual Fuel Fill Capable
- Tire Pressure Monitoring
- Adaptive Cruise Control
- Automatic Traction Control
- Collision Mitigation with Forward Warning and Active Braking
- Electronic Stability Control

CHASSIS OPTIONS		35 CP	40 IP	45 FP	45 OPP
Engine	Cummins® L9 450 HP Diesel Engine with 1,250 lb-ft Torque ²	S	S	S	S
	Cummins® X15 605 HP Diesel Engine with 1,950 lb-ft Torque ³	-	-	O	O
Alternator	210-Amp Alternator ⁴	S	S	D	D
	280-Amp Alternator ⁵	-	-	D	D
Transmission	Allison® 3000 MH 6-speed Automatic Transmission with Lock-up Torque Converter ⁴	S	S	D	D
	Allison® 4000 MH 6-speed Automatic Transmission with Lock-up Torque Converter ⁵	-	-	D	D
Chassis Batteries	(2) 12-Volt Flooded Lead-Acid Chassis Batteries ⁴	S	S	D	D
	(3) 12-Volt Flooded Lead-Acid Chassis Batteries ⁵	-	-	D	D
Steerable Tag Axle		-	-	S	S
Service Brakes	Tag Axle Drum Brakes ⁴	-	-	D	D
	Tag Axle Disc Brakes ⁵	-	-	D	D

¹ Rear drum brakes are no longer available.

² Peak horsepower achieved at 2,100 RPM. Peak torque achieved at 1,400 RPM.

³ Peak horsepower achieved at 1,800 RPM. Peak torque achieved at 1,150 RPM.

⁴ Standard with 450 HP engine option. Not available with 605 HP engine option.

⁵ Standard with 605 HP engine option. Not available with 450 HP engine option.

CONSTRUCTION

- Seamless One-piece Gel-coat Fiberglass Molded Roof Cap
- 5 1/4" Formed Roof Insulation
- Tubular Aluminum Roof Skeleton Frames
- Extraordinaire™ Ducted Air Cooling System
- One-piece Molded Gel-coat Fiberglass Front and Rear Caps
- Steel Cockpit Overhead Support Frame
- Crane® Composites Noble® Select All-Composite Exterior Sidewalls
- Tubular Aluminum Wall Skeleton Frames
- High-performance Thermal Insulation in Sidewalls
- Engineered Wood Sub-flooring
- Laminated Elevated Sub-Flooring with 2 3/4" Thick Thermal Insulation
- Steel Basement Construction
- Rust Protective Undercoating
- Hydraulic Slide-out Mechanisms
- Extra Storage Chassis Construction ¹

¹ Floor is constructed flush with top of rear engine. Allows for more basement storage and eliminates step in rear bedroom or bathroom walking area.

Specifications, Features, and Options (Cont'd)

KEY : S : Standard Feature | O : Optional Feature; Additional costs may apply | D : Dependent; Availability is dependent on selection of another option | - : Not Available

ELECTRICAL

- Hydronic Heating & Electronic Appliance Equipped Coach ¹ **UPDATED**
- Spyder Controls Multiplex System
- Firefly Integrations Eclipse Module ² **NEW**
- Centralized 10" Spyder System Main Monitor
- Passenger Console Spyder System Color Touchscreen
- Interior Entryway Spyder System Color Touchscreen
- Exterior Spyder System Color Touchscreen
- Additional Spyder Color Touchscreens Throughout Coach
- 10.0-Kilowatt Onan® Quiet Diesel Generator
- Generator Slide Tray
- 2,800-Watt Pure Sine Wave Inverter Charger with Auto-Gen Start and Interior Remote Control ³
- (3) 15,000-BTU Low Profile Air Conditioners with Heat Pumps and Condensation Drains
- Aqua-Hot® 450D Heat Exchanger ⁴
- 50-Amp Shore Power with Powered Retract Reel
- Prep for Solar Panels ⁵
- Auxiliary Solar Port
- Energy Management System
- HD Over-the-air Antenna
- Park Cable and Ground Satellite Hook-up
- In-motion Satellite Dish ⁶
- Blu-ray™ Player
- Prewiring for Winegard® Trav'ler™ Satellite
- Satellite Receiver ⁷
- 12-Volt Breaker Panel
- 12-Volt Disconnect Switch
- Rotary Disconnect Switches for House Batteries, Chassis Batteries, and Inverter
- Ground Fault Circuit Interrupter (GFCI) Outlets at Galley, Lavatories, and Sewer Bay
- 110-Volt Exterior Receptacle
- Surge Guard® Transfer Switch
- USB Receptacles Throughout Coach

ELECTRICAL OPTIONS		35 CP	40 IP	45 FP	45 OPP
House Batteries	(6) 6-Volt, 230-Amp Hours Flooded Lead-Acid House Batteries	S	S	S	S
	(6) 6-Volt, 300-Amp Hours Extended Cycle AGM House Batteries	O	O	O	O
	(3) 12-Volt, 270-Amp Hours Lithium House Batteries	O	O	O	O
	Battery Slide-out Tray ⁸	D	D	D	D
Solar Panels	(3) 200-Watt Solar Panels with (1) 30-Amp Controller	O	O	O	O
	(6) 200-Watt Solar Panels with (2) 30-Amp Controllers	-	O	O	O
Internet & Phone	Prep for Wi-Fi Booster ⁹	D	D	D	D
	Wi-Fi Booster ¹⁰	O	O	O	O
	Starlink® Pro ¹¹ NEW	O	O	O	O

- ¹ Space heating, water heating, and cooking appliances are electrically powered. Formerly known as "All-Electric Coach".
- ² Download the accompanying Vegatouch app to control your coach locally offline using Bluetooth and remotely anywhere there's internet for the coach module (Local control only for slides and awning). Includes a free 90-day remote access trial.
- ³ Automatic generator start capabilities controlled through Spyder Controls Multiplex System.
- ⁴ Aqua-Hot® heat exchanger provides both heated air and water.
- ⁵ Includes docking ports for aftermarket solar panels.
- ⁶ High-definition programming is not available on a domed satellite antenna unless you subscribe to DISH Network®.
- ⁷ Requires subscription.
- ⁸ Standard with flooded and extended cycle AGM batteries. Not available with lithium batteries.
- ⁹ Standard unless Starlink Pro is optioned.
- ¹⁰ Not combinable with Starlink Pro option.
- ¹¹ Not combinable with Wi-Fi Booster option. Requires subscription.

PLUMBING

- Aqua-Hot® 450D Heat Exchanger ¹
- Aqua View Showermiser™
- Water Filter
- Water Pump Switch Access from Spyder System and Sewer Bay Board
- Low-point Water Drain Lines
- Black Holding Tank Flush System
- Gravity Water Fill
- Heated Water and Holding Tank Compartment
- SeeLevel™ Tank Monitor
- Centralized Exterior Sewer Bay with Gravity Black and Grey Evacuation Ports
- Exterior Rinse Hose with Shower Head
- Sewer Bay Hand Sanitizer and Paper Towel Holders
- Fresh Water Hose with Power Retract Reel
- Sewer Hose Storage

- ¹ Aqua-Hot® heat exchanger provides both heated air and water.

EXTERIOR

- Full-body Paint with (4) Layers of Clear Coat
- Striped Slide-out Endwalls
- High Performance Protective Film on Front Cap and Select Areas
- Girard® Powered Door Awning with Integrated LED Lighting
- Girard® Slide-out Toppers
- Side-swinging Exterior Storage Doors with Gas Shocks
- Lockable Handles on Compartment Doors
- Motion-sensor Lights in Cargo Bay
- 120-Volt and 12-Volt Outlets
- Inside Cargo Bays
- Pass-through Basement Storage
- Charcoal Carpet Cargo Walls
- Fiberglass Reinforced Plastic Basement Floor
- Frameless, Dual-Pane Windows
- Exterior Patio Light
- Fog Lights
- Daytime Running Lights
- Docking Lights
- Exterior Ground Effects Lighting
- Chrome Power Heated Side-View Mirrors with Integrated Cameras
- Exterior TV with Soundbar
- Fast Charge USB ports within Exterior TV Compartment
- Lightweight Entry Door with Integrated Screen
- Deadbolt Front Entrance Lock
- Lighted Entry Door Grab Handle
- Automatic Stainless Steel Double Entry Step
- Keyless Entry System for Front Entrance and Component Doors
- Mud Flaps
- Custom Rock Guard

EXTERIOR OPTIONS		35 CP	40 IP	45 FP	45 OPP
Patio Awnings	(1) Girard® Roof-mounted Powered Patio Awning with Integrated LED Lighting and Dual Pitch Feature	S	S	S	S
	(2) Girard® Roof-mounted Powered Patio Awnings with Integrated LED Lighting and Dual Pitch Feature	O	O	O	O
Window Awnings	Girard® Manual Window Awning Package	S	S	S	S
	Girard® Powered Window Awning Package	O	O	O	O
Cargo Door Stainless Steel Rocker Trim		O	O	O	O
Slide Trays	(1) Powered Storage Compartment Slide-out Tray NEW	O	O	O	O
	(2) Powered Storage Compartment Slide-out Trays NEW	-	O	O	O
Outdoor Electric Grill ³		-	O	O	O
Basement Freezer		O	O	O	O
Exterior Lighting under Slide-out		O	O	O	O
Lippert™ On-The-Go™ Telescoping Ladder ⁴		O	O	O	O

- ¹ Trays slide out on both sides of motorhome.
- ² Trays slide out on both sides of motorhome. Not combinable with outdoor electric grill.
- ³ Outdoor electric grill is installed on a manual slide-out tray. Not combinable with (2) powered storage compartment slide-out trays option.
- ⁴ All units will ship with a Lippert™ On-The-Go™ Prepped Receiver installed.

INTERIOR

- Handcrafted Overhead Cabinetry
- Solid Surface Step Well with Tile Inserts
- Powered Step Well Cover
- Storage Compartment Within Entry Steps
- Recessed Step Well Lighting
- Living Area TV
- Solid Surface Galley Countertop
- Handcrafted Slide-out Fascia
- Soft Touch Vinyl Ceiling
- Dimmable LED Lighting
- Prep for Washer and Dryer
- Carbon Monoxide Detector
- LPG Leak Detector
- Smoke Detector
- Fire Extinguisher
- Powered Solar and Privacy Shades
- Soft-closing Drawers
- Powered Roof Vents
- Central Vacuum System with VacPan® Automatic Dustpan
- Interior Grab Handle at Entry Door
- Egress Windows Throughout Coach

INTERIOR OPTIONS		35 CP	40 IP	45 FP	45 OPP
Interior Décor Packages	Chai NEW	O	O	O	O
	Picasso NEW	O	O	O	O
	Silver Lake NEW	O	O	O	O
Upholstery Fabrics	Ultrafabrics® Tottori Tatami Mat	O	O	O	O
	Ultrafabrics® Tottori Rice Paper	O	O	O	O
Cabinetry Stain	Shadow	O	O	O	O
	White Linen	O	O	O	O
	Glazed Canyon Cherry	O	O	O	O
	Glazed Honey Natural Cherry	O	O	O	O
	Black Truffle NEW	O	O	O	O
	Platinum NEW	O	O	O	O
Floor Tiles	Catalina Maple Glazed Porcelain Tile	O	O	O	O
	Positano II Blanco Glazed Porcelain Tile NEW	O	O	O	O
Slide-out Flooring	Treated Carpet in Slide-out Floors	S	S	-	-
	Tile Slide-out Floors	-	-	S	S
Standalone Living Area Fireplace ¹		O	-	-	-
Stacked Washer and Dryer		O	O	O	O
Gold Heat® Dual Zones Heated Tile Floor		O	O	O	O

- ¹ Not compatible with beverage center on 35 CP.

Specifications, Features, and Options (Cont'd)

KEY : S : Standard Feature | O : Optional Feature; Additional costs may apply | D : Dependent; Availability is dependent on selection of another option | - : Not Available

DRIVER'S COMPARTMENT				
<ul style="list-style-type: none"> • Ultrafabrics® Tottori Power Driver and Passenger Seats • Dual Driver And Passenger Seat Armrests • Swivel Bases for Driver and Passenger Seats • Powered Passenger Seat Footrest • Integrated Seat Belts on Driver and Passenger Seats • Lumbar Support on Driver and Passenger Seats • Tilt and Telescoping Steering Wheel with Integrated Controls • Adjustable Accelerator and Brake Pedals • Ergonomic Dash with Carbon Fiber Accents • Mounted Dash Fans • Cupholders on Driver and Passenger Side • Valid™ Liquid Crystal Display Instrument Cluster with Integrated Leveling Controls 	<ul style="list-style-type: none"> • (2) Center Storage Drawers • Generator Start & Stop Rocker Switch • USB Dash Receptacles • 12-Volt Dash Receptacle • Backlit Dash Rocker Switches • Passenger Console Wireless Phone Charger • 7" Passenger Console Advanced Monitor System Touchscreen • Driver Console Stationary Mount Phone Charger NEW • Driver and Passenger Map Lights • One-piece Panoramic Windshield • Single-motor Intermittent Windshield Wipers • Automatic LED Headlights • Side-view Cameras ¹ • Color Back-up Camera • 10" Glass Panel Camera Monitor for Side-view, Back-up, and 360° View Cameras 	<ul style="list-style-type: none"> • Blind Spot Monitoring System • Advanced Monitor System featuring Media Center, Bluetooth®, and AM, FM, and Satellite Radio ² UPDATED • Ceiling Mounted Speakers • JBL® Sound System ³ UPDATED • In-dash Navigation System via Advanced Monitor System's 10" Glass Panel Touchscreen • Overhead Cabinetry with Wooden Panel Doors • Auxiliary Start Switch • Concealed Air Horn • Powered Opening Driver Side Window • Solid, Non-opening Passenger Side Window • Powered Solar and Privacy Windshield Shade • Powered Solar and Privacy Shades on Side Windows 		

DRIVER'S COMPARTMENT OPTIONS	35 CP	40 IP	45 FP	45 OPP
360° View Camera	O	O	O	O
Front Overhead TV	O	O	O	O

¹ Integrated within side-view mirrors and activated by turn signals.

² Includes a 10" Touchscreen LCD monitor for navigation system and entertainment, a 10" camera monitor, and a 7" passenger monitor. Subscription required for satellite radio. Now standard for all floorplans.

³ Includes amplifier and (2) subwoofers. Now standard for all floorplans.

DINETTE AND LIVING AREA		SLEEPS	SEATS	SEATBELTS	35 CP	40 IP	45 FP	45 OPP
Driver Side Furniture	74" Air Coil Sofa Bed	1	2	2	S	S	-	-
	74" Theater Seating	-	2	2	O	O	-	-
	80" Air Coil Sofa Bed with Lift TV ¹	1	3	3	-	-	-	S
	80" DE Sofa Bed with Lift TV ²	1	3	3	-	-	-	O
	83" Air Coil Sofa Bed ³	2	3	3	-	-	S	-
	83" Theater Seating	-	2	2	-	-	O	-
	Ottoman with Internal Storage ⁴	-	-	-	D	D	D	D
Passenger Side Dinette	75" Dinette with Chairs and Lift TV ⁵ UPDATED	-	2	-	S	-	-	-
	75" Dinette Bar with Lift TV ⁶	-	2	-	O	-	-	-
	75" Dinette with Chairs ⁷ UPDATED	-	2	-	-	S	S	S
	75" U-shaped Dinette	-	4	2	-	O	O	O
	75" Dinette Bar ⁸	-	2	-	-	-	O	-
Passenger Side Furniture	68" DE Sofa Bed with Lift TV ⁹	1	2	2	-	S	-	-
	68" Air Coil Sofa Bed with Lift TV ¹	1	2	2	-	O	-	-
	Recliner and Lift TV ¹⁰	-	1	-	-	O	-	-
	88" DE Sofa Bed ¹¹	1	3	3	-	-	-	S
	88" Air Coil Sofa Bed ³	2	3	3	-	-	-	O
	88" Theater Seating	-	2	2	-	-	-	O
	Ottoman with Internal Storage ¹²	-	-	-	-	-	-	D
	70" DE Sofa Bed with Lift TV ¹⁰	1	2	2	-	-	S	-
	70" Air Coil Sofa Bed with Lift TV ¹	1	2	2	-	-	O	-
	Recliner and Lift TV with Fireplace ¹⁰	-	1	-	-	O	O	-

¹ Mattress measures 72" x 52" and includes internal pump. Lift TV deletes cabinetry over furniture.

² Piece of furniture converts to 73" x 49" sleeping area. Lift TV deletes cabinetry over furniture.

³ Mattress measures 72" x 59" and includes internal pump.

⁴ Standard unless theater seating option is chosen. Only one ottoman per motorhome.

⁵ Formerly known as "Dinette Computer Workstation". The printer bump-out was removed for more leg room. The keyboard and printer trays have been converted to a drawer and a fixed shelf to maximize storage. Includes (2) freestanding accent chairs and (2) wooden folding chairs. Lift TV deletes cabinetry over dinette.

⁶ Includes (2) freestanding accent chairs and (2) wooden folding chairs. Lift TV deletes cabinetry over dinette.

⁷ Formerly known as "Dinette Computer Workstation". The printer bump-out was removed for more leg room. The keyboard and printer trays have been converted to a drawer and a fixed shelf to maximize storage. Includes (2) freestanding accent chairs and (2) wooden folding chairs.

⁸ Includes (2) freestanding accent chairs and (2) wooden folding chairs.

⁹ Piece of furniture converts to 61" x 49" sleeping area. Lift TV deletes cabinetry over furniture.

¹⁰ Lift TV deletes cabinetry over furniture.

¹¹ Piece of furniture converts to 81" x 49" sleeping area.

¹² Standard unless theater seating option is chosen. Only one ottoman per motorhome.

KITCHEN				
<ul style="list-style-type: none"> • 17-Cubic Foot Smart Convection Microwave with Air Fry • Double Bowl Kitchen Sink with Single Lever Faucet and Pull-down Sprayer • Built-in Soap Dispenser • Galley Overhead Cabinets 	<ul style="list-style-type: none"> • with Pull-out Drawers • Panoramic Galley Window • Task Lighting • Toe Kick Lighting • Under Counter LED Accent Lighting 	<ul style="list-style-type: none"> • Pantry Lighting • Full Tile Backsplash • Solid Surface Galley Countertop, Sink, and Cooktop Cover • Pull-out Utility Box Located Under Sink 		

KITCHEN OPTIONS		35 CP	40 IP	45 FP	45 OPP
Refrigerator	22-Cubic Foot Stainless Steel Residential Refrigerator with French Doors and Bottom Freezer ¹	S	-	S	-
	25-Cubic Foot Stainless Steel Residential Refrigerator with French Doors and Bottom Freezer ¹	-	S	-	S
Decorative Wooden Refrigerator Panel		O	O	O	O
Cooking Appliances	Two-Burner Induction Cooktop	S	S	S	S
	Wolf® Induction Cooktop	O	O	O	O
InSinkErator® Instant Hot Water Faucet		O	O	O	O
Drawer-style Dishwasher		O	O	O	O
12" Beverage Center ²		O	-	O	O
Electronic Release Expand-An-Island NEW		-	S	S	S

¹ Refrigerator volume is approximated.

² Not compatible with fireplace on 35 CP.

BEDROOM				
<ul style="list-style-type: none"> • Under Bed Storage • Bedside Windows • Bed Comforter with Throw Pillows • Handcrafted Privacy Door 	<ul style="list-style-type: none"> • LED Reading Lights • Nightstand with Solid Surface Tops • Mounted Bedroom TV • Centralized Entertainment Center ¹ 	<ul style="list-style-type: none"> • Ceiling Fan • Decorative Handcrafted Wood Ceiling Ring • Safe 		

BEDROOM OPTIONS		35 CP	40 IP	45 FP	45 OPP
Mattress	Memory Foam King Mattress (72" x 80")	-	S	S	S
	Memory Foam King Mattress (72" x 80") with Power Smart Lift	S	O	O	O
Bed Slide	Overhead Cabinet with Headboard	S	S	S	S
	Window at Head of Bed ²	O	O	O	O
Shoe Rack		-	-	S	S
Bedroom Storage	Floor-to-ceiling Closet Space	S	S	S	-
	Walk-in Closet	-	-	-	S
	Solid Surface Countertops within Storage Spaces	-	-	S	S
Laundry Hamper		S	S	S	-
Bedroom Fireplace		O	O	O	O
Bedroom Egress Door ³		D (O)	D (O)	-	D (O)

¹ Houses Blu-ray™ player, satellite receiver, and cable TV hook-up.

² Window option removes overhead cabinets.

³ Available as an add-on option when combined with overhead cabinet with headboard. Not available with window at head of bed.

BATHROOM				
<ul style="list-style-type: none"> • (2) Porcelain Master Bathroom Sinks • Solid Surface Lavatory Top • Teak Folding Shower Seat • Shower Head with Detachable Hand-held Shower Wand 	<ul style="list-style-type: none"> • Shower Skylight • Shower LED Light with Sliding Cover • Towel and Toilet Paper Holders • Medicine Cabinet with Tri view Vanity Mirror 	<ul style="list-style-type: none"> • Roof Vent Fan • Base Cabinet 		

BATHROOM OPTIONS		35 CP	40 IP	45 FP	45 OPP
Number of Bathrooms	(1) Bathroom	S	-	-	-
	(1) Bathroom and (1) Half-bath ¹	-	S	S	S
Shower	Solid Surface Shower Walls with Inlaid Tile and Residential Glass Door (32" x 40")	S	S	-	-
	Solid Surface Shower Walls with Inlaid Tile and Residential Glass Door (32" x 48")	-	-	-	S
	Solid Surface Shower Walls with Inlaid Tile and Residential Glass Door (34" x 52.5")	-	-	S	-
Toilet	(1) Macerator Toilet	S	-	-	-
	(1) Electric Gravity Flush Toilet and (1) Macerator Toilet	-	S	S	S
Bathroom Egress Door		-	-	S	-

¹ All half-baths contain a toilet and a solid surface countertop with a single porcelain sink.



Reflecting over four decades of innovation, Tiffin's proprietary PowerGlide Chassis demonstrates our ongoing commitment to delivering a motorhome experience that's precisely engineered for durability, reliability, performance, and control wherever your journey takes you.

MULTIPLEX WIRING WITH DIAGNOSTICS

The PowerGlide's multiplexed electrical system, with auto-reset fuses and relays, uses less wiring and increases reliability, efficiency, and flexibility.

DYNAMOMETER TESTING

The PowerGlide's dynamometer testing simulates full power road testing, enabling us to better assess engine performance, cooling system function, and instrumentation.

POWERGLIDE CHASSIS WARRANTY

The PowerGlide carries a Tiffin-backed limited warranty for three years or 50,000 miles against defects in materials and workmanship.

HUCK-BOLTED CONSTRUCTION

The PowerGlide's Huck Bolts are precision engineered two-piece fasteners. Huck Bolts are vibration resistant and provide direct metal to metal contact when installed.

1

YEAR OR 12,000 MILES
LIMITED WARRANTY

5

YEARS OR 50,000 MILES
DELAMINATION
LIMITED WARRANTY

10

YEARS OR 50,000 MILES
CONSTRUCTION
LIMITED WARRANTY

1

YEAR COACH
ROADSIDE SERVICE



ONGOING
CUSTOMER SUPPORT

FOR SALES CALL 256-356-8661 AND PARTS & SERVICE CALL 256-356-0261 OR VISIT TIFFINMOTORHOMES.COM

105 2ND ST NW RED BAY, AL 35582  

Colton RV & Marine
3122 Niagara Falls Blvd
North Tonawanda, NY 14120
(716) 694-0188
www.ColtonRV.com

Colton RV
3443 Southwestern Blvd.
Orchard Park, NY 14127
(716) 957-3250
www.Coltonrv.com



TIFFIN
MOTORHOMES

All trademarks and logos are owned or used under license by Tiffin Motor Homes, Inc. and include, but are not limited to: TIFFIN®, MANY ADVENTURES. ONE DREAM™, ALLEGRO®, ALLEGRO BREEZE®, ALLEGRO RED®, PHAETON®, ALLEGRO BUS®, ZEPHYR®, WAYFARER®, ROUGHING IT SMOOTHLY®, OPEN ROAD®, POWERGLIDE®, CAHABA®, BYWAY™, and associated logos and emblems. Unauthorized use of any trademark of Tiffin Motor Homes, Inc. is strictly prohibited.

© Copyright 2023 Tiffin Motor Homes, Inc.

For all information concerning the limited warranty provided by Tiffin, please refer to the full written limited warranty set forth on the Tiffin website or held by our authorized dealerships. Please note, some interior furnishings not included. Revised: 8/31/23