

# Passport

ULTRA LITE  
*by Keystone*

Go Anywhere.





Shown Above: All Passport models come equipped with an extra large double door refrigerator. Along with the adjustable shelving pantry you can always have what you need for those campsite meals.

Shown Below: The adjustable shelving pantry doubles as a wardrobe. Perfect for the trips when you need to bring those extra clothes or larger items.



## Enjoyable Interiors

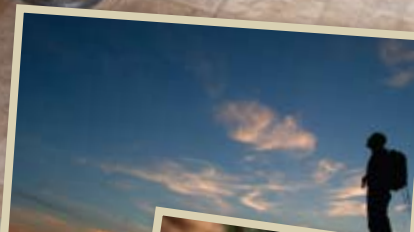
The Passport interiors are not only stylish but functional, shown above in Havana. Passport is committed to meeting your style and living needs. All of the Passport galley slides feature a spacious contoured counter top, full overhead storage, large windows with elegant décor, and vast under sink storage. The sofa is equipped with built in cup holders for the convenience of accommodating your favorite beverage. You will also notice the two tone wood treatment throughout giving your Passport the modern look you are searching for.



Shown above: The media tower in select models makes it easy to view TV or a DVD from anywhere in the main living area. Swivel the TV, as shown below, and it turns into a full bedroom entertainment center!



One thing Passport is not short on is space! With some models including the large u-shape dinette, shown above in the 300BH in Havana, you can invite the family, the friends and even your camping neighbors for any type of social gathering. Located under the chaise lounge end of the u-shape dinette is a large trunk for storing those bigger items that just don't seem to fit in other trailers. Not only good for storage and dining, the u-shape dinette converts into a "jumbo-sized" bed for comfortable, easy sleeping.



All Passports are equipped with an AM/FM Stereo CD/DVD/MP3 player and aux. input. With 2 interior mounted ceiling speakers and 2 mounted outside you will never miss a beat!



Shown above: All of our Passport models have 2 full extension drawers in the galley. Mounted on steel glides, these drawers make it easy to grab what you need.

Do you want to go camping? Do you want a trailer that most vehicles on the road today can tow? Welcome to Passport, where we put everything you need to go camping in a lite weight easy to tow trailer that's functional and stylish!



## Life is Easy

At Passport we make life easy by giving you all you need for those extended trips away from home. The bedroom of the 288RK, shown right in Harvest décor, has hanging closets with full length mirrors. And don't think you have to leave that laptop at home. Stay connected with a desk and work area complete with storage and a TV shelf.



Shown above: In our 288RK, shown here in the Harvest décor, you won't find it any easier to move about the kitchen area.

Shown left: All the Passport models have easy to use overhead storage. Most open up into a single large compartment rather than two small ones. This makes bringing along those larger cooking items easy!



Shown above: Small showers? Not in a Passport! With the large corner glass shower in the 195RB, 245RB, 286RB, and 288RK you hardly realize you are camping. All of our tubs and showers have built-in shelves and a skylight for added room and extra light.



Shown above: We didn't forget the kids. In our 290BH we gave them a full hanging wardrobe, shoe storage, and two extension drawers. Above all of this is a large counter top with TV hook-up.

Shown right: All your accessory controls are housed in the fully functional Convenience Center. Inside you'll find the slide room switch, light switches for porch and interior lights, tank monitors, and electric awning switch. The hinged cover is even outfitted with coat and key hooks and a corkboard for messages.



Shown right: Need a place to put your shoes? In most Passport models we have convenient shoe storage located directly by the entrance door.



# Construction & Features



HD Flat Screen Television



**Online videos available**

Want to know more about these amazing features? Go to [www.keystone-passport.com](http://www.keystone-passport.com) and look for the video symbol!



Deep Sink with High-Rise Faucet



Outside Speakers and Power Awning



Pass-Thru Storage with Light



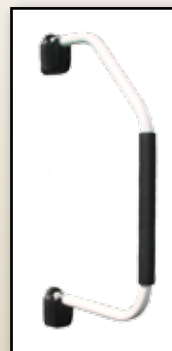
Stabilizer Jacks



1. Gel Coated Filon Exterior
2. Luan Layer
3. Hi-Density Block Foam Insulation
4. Interior Wallboard
5. Total Aluminum Frame
6. Residential Grade Linoleum
7. 1st Layer Floor Decking
8. 2nd Layer Floor Decking with Staggered Seams
9. Hi-Density Block Foam Insulation
10. Aluminum Floor Studs
11. 3rd Layer Floor Decking
12. Moisture Barrier Wrap
13. Enclosed Underbelly

14. PACO I-Beam Frame
15. One Piece Rubber Roof
16. Roof Decking
17. R-11 Insulation
18. 5" Crowned / Stamped Roof Trusses
19. Hurricane Straps
20. Diamond Plate
21. Dual Battery Tray
22. Sloped Slide Roof
23. Wiper Seals
24. Bulb Seal in T-Track

25. Aerodynamic Front Wall
26. Easy Lube Axles
27. Load Equalization Axles
28. Radial Tires
29. Radius Entry Steps



Folding Entry Assist Handle



Slide-Out Cook Center



Foot flush toilet



LP Tank Cover



Tank cover opens for easy access to tanks.



Outside Shower

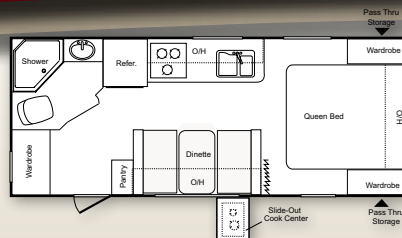


Load Equalization Axles

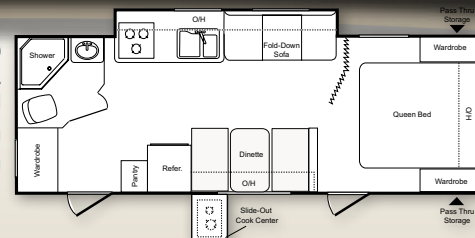
Go Anywhere...

# Floorplans

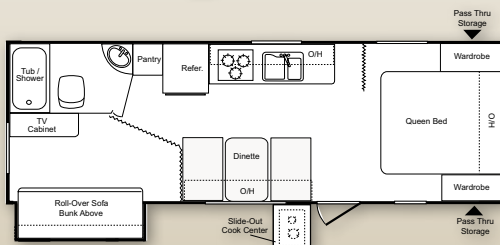
195 RB



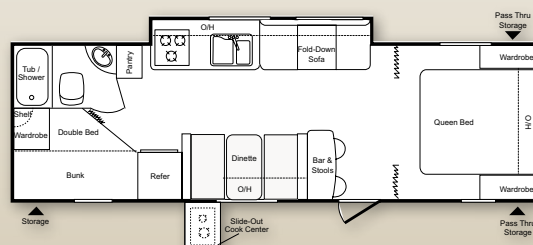
245 RB



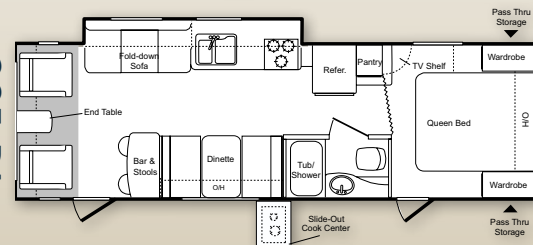
250 BH



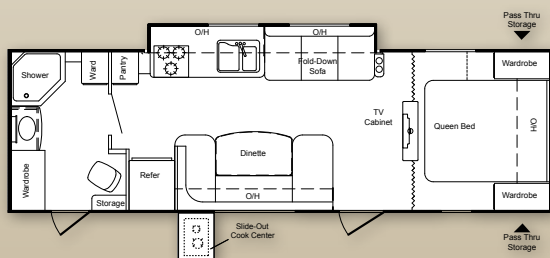
280 BH



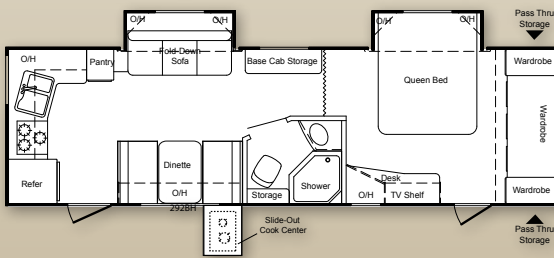
285 RL



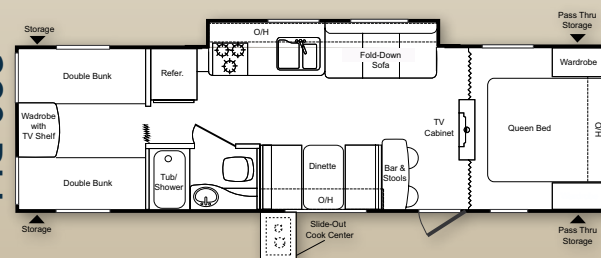
286 RB



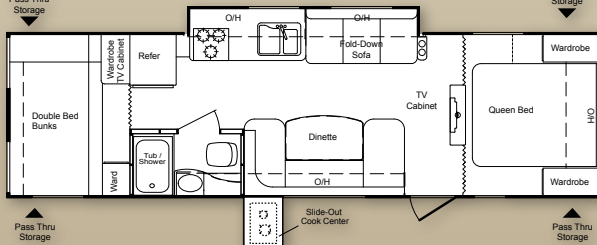
288 RK



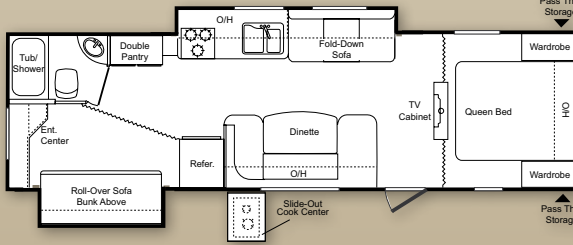
290 BH



292 BH



300 BH



	195 RB	245 RB	250 BH	280 BH	285 RL	286 RB	288 RK	290 BH	292 BH	300 BH
Shipping Weight	3880	4591	4349	4752	4909	4894	5230	5134	5110	5484
Carrying Capacity	2050	1409	1691	1293	1296	1154	2178	2441	2456	2051
Hitch	330	400	440	445	605	448	480	575	646	535
Exterior Length	23' 10"	27' 2"	27' 10"	31' 2"	31' 2"	31' 2"	32' 7"	33' 3"	33' 3"	33' 6"
Ext Height	10' 1"	10' 2"	10' 2"	10' 2"	10' 2"	10' 2"	10' 2"	10' 2"	10' 4"	10' 4"
Fresh Water gal.	30	30	30	30	30	30	30	30	30	30
Waste Water gal.	30	30	30	30	30	30	30	30	30	30
Grey Water gal.	30	30	30	30	30	30	30	30	30	30
LPG Capacity lbs.	40	40	40	40	40	40	40	40	40	40

# Standard Features

## Chassis

- ☐ Engineered specifically for each floor plan
- ☐ Tube style bumper w/ sewer hose storage
- ☐ Fully welded outriggers
- ☐ 100% "E" coated Paco frame
- ☐ Cambered for added structural support
- ☐ Extra support cross members
- ☐ Electric slide out system
- ☐ Enclosed and heated underbelly

## Construction

- ☐ Welded aluminum framed sidewalls
- ☐ Laminated gel-coated filon exterior walls
- ☐ High density bead foam insulation in sidewalls (R-7 insulation)
- ☐ Laminated aluminum framed floor 2" thick
- ☐ One piece breathable Darco protective wrap
- ☐ R-11 floor insulation
- ☐ Stamped galvanized 5" thick crowned rafters
- ☐ One piece seamless TPO roof
- ☐ R-11 ceiling insulation

## Exterior Features

- ☐ Insulated lockable radius baggage doors with hold backs
- ☐ Insulated radius entrance door with screen door
- ☐ Double entry steps at main door
- ☐ Aerodynamic fender skirts
- ☐ Heavy duty front mechanical jack
- ☐ 4 scissor style stabilizer jacks
- ☐ 2-20lb. Propane bottles with flip top cover
- ☐ Dual battery rack over A-frame
- ☐ Rain gutters with downspouts
- ☐ Electric adjustable awning
- ☐ Lighted exterior pass thru storage compartment
- ☐ Outside cook center w/stove

- ☐ Patio entrance light
- ☐ Exterior shower w/ hot & cold
- ☐ Fold away exterior grab handle
- ☐ Front diamond plate
- ☐ Load Equalization (spread axle design)
- ☐ EZ lube axles
- ☐ Exterior speakers
- ☐ Roof air vent system

## Interior Features

- ☐ Residential style furniture with high grade fabric
- ☐ Convenience center with slide, lights and water system controls
- ☐ 13.5 BTU ducted A/C
- ☐ Forced air furnace
- ☐ 6 gallon gas/electric DSI water heater
- ☐ Water system winterization ready
- ☐ Residential grade durable linoleum
- ☐ Digital TV system
- ☐ 12 volt DVD/CD/AM/FM stereo with aux input & quality sound speakers
- ☐ 19" LCD flat screen TV with 12V operation
- ☐ 2 tone wood accents

## Kitchen

- ☐ Extra large double door refrigerator
- ☐ Oversized 60/40 residential sink
- ☐ Microwave with carousel
- ☐ 3-burner high output range with oven
- ☐ Range hood with 12-volt exhaust fan and light
- ☐ Metal high-rise faucet
- ☐ Residential hardwood cabinet doors
- ☐ Coordinated wall paper border

## Bathroom

- ☐ Medicine cabinet with mirror
- ☐ Tub surround with built-in shelves
- ☐ Radius shower curtain
- ☐ Foot pedal flush toilet
- ☐ Skylight over tub
- ☐ 12 volt power exhaust fan

## Bedroom (Main)

- ☐ Quilted bedspread
- ☐ Decorative headboard
- ☐ Oversized wardrobe
- ☐ Nighttime reading lights

## Safety Package

- ☐ 4 wheel electric brakes
- ☐ Break-away switch
- ☐ Heavy duty safety chains with clasp
- ☐ Tinted safety glass windows
- ☐ Multiple emergency egress windows
- ☐ GFI receipts
- ☐ Carbon monoxide detector
- ☐ Smoke alarm
- ☐ Fire extinguisher
- ☐ Propane gas leak detector
- ☐ Dead-bolt lock on entrance doors
- ☐ Manual override on slide system
- ☐ Spare tire kit





1. Aluminum sport wheels



2. Portable outside grill with LP connection



3. Oversized lighted pass-thru storage compartment

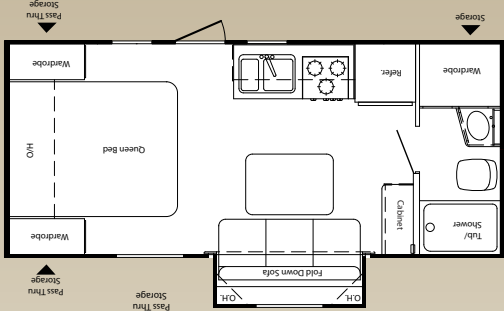


4. 4.15" LCD HD TV with DVD/CD/AM/FM stereo with auxiliary input.

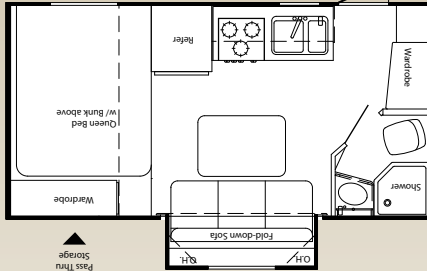
## Standard Features

- ☐ Forced air furnace
- ☐ 13.5 BTU A/C
- ☐ 6 gallon gas/electric
- ☐ DSI water heater
- ☐ Water system
- ☐ Winterization ready
- ☐ Residential grade durable linoleum
- ☐ 12-volt CD/DVD/AM/FM stereo with aux input & quality sound speakers
- ☐ 15" LCD flat screen 12 V TV
- Kitchen**
  - ☐ Extra large double door refrigerator
  - ☐ Oversized 60/40 residential sink
  - ☐ Microwave with carousel
  - ☐ 3-burner high output range
  - ☐ Range hood with 12-volt exhaust fan and light
  - ☐ Metal high-rise faucet
  - ☐ Residential hardwood cabinet doors
  - ☐ Coordinated wall paper border
- Bathroom**
  - ☐ Medicine cabinet
  - ☐ Tub surround with mirror
  - ☐ Shower curtain
  - ☐ Foot pedal flush toilet
  - ☐ 12 volt power exhaust fan
- Safety Package**
  - ☐ 4 wheel electric brakes
  - ☐ Break-away switch
  - ☐ Heavy duty safety chains with clasp
  - ☐ Tinted safety glass windows
  - ☐ GFI recepts
  - ☐ Carbon monoxide detector
  - ☐ Smoke alarm
  - ☐ Fire extinguisher
  - ☐ Propane gas leak detector
  - ☐ Dead-bolt lock on entrance doors
  - ☐ Manual override on slide system
  - ☐ Spare tire kit
- Interior Features**
  - ☐ Residential style furniture with high grade fabric
- Exterior Features**
  - ☐ Portable outside grill
  - ☐ Patio entrance light
  - ☐ storage compartment
  - ☐ Lighted exterior pass thru
  - ☐ Color coordinated awning
  - ☐ downspouts
  - ☐ Rain gutters with with flip top cover
  - ☐ 2-20lb. Propane bottles
  - ☐ mechanical jack
  - ☐ Heavy duty front door with screen door
  - ☐ Insulated radius entrance
  - ☐ with hold backs
  - ☐ radius baggage doors
  - ☐ Insulated lockable
- Exterior Features**
  - ☐ 78" interior ceiling height
  - ☐ R-11 ceiling insulation
  - ☐ TPO roof
  - ☐ One piece seamless stamped crowned rafters
  - ☐ Galvanized 5" thick
  - ☐ R-11 floor insulation
  - ☐ framed floor 2" thick
  - ☐ Laminated aluminum (R-7 insulation) insulation in sidewalls
  - ☐ High density bead foam
  - ☐ flion exterior walls
  - ☐ Laminated gel-coated
  - ☐ 8' Wide construction
  - ☐ Welded aluminum framed sidewalls
- Construction**
  - ☐ Electric slide out system
- Chassis**
  - ☐ Fully welded outriggers
  - ☐ 100% "E" coated
  - ☐ Extra support cross members

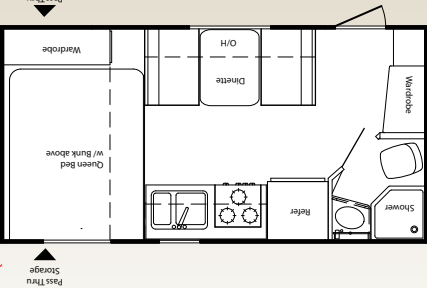
Shipping Weight	186 ML	189 ML	199 ML
Carrying Capacity	2724	2570	2431
Hitch	228	245	322
Exterior Length	19' 2"	19'	21' 9"
Exterior Height	10' 1"	10' 1"	10' 1"
Fresh Water gal.	30	30	30
Waste Water gal.	30	30	30
Grey Water gal.	30	30	30
LPG Capacity lbs.	40	40	40



199 ML



189 ML



186 ML

# Express SUPER LITE

With many vehicles on the road today having reduced tow ratings and smaller, more fuel efficient engines, the drive to meet these vehicle owners' needs has inspired the Express Super Lite. With all of our models weighing less than 3500 lbs the Express can be towed by almost all vehicles on the road today. We have taken all the essentials and more and put them in a compact, super lite weight trailer.

Express Super Lite doesn't mean small and unlivable. The Express comes standard with a 78" interior height, 8 ft. wide, a full size sofa, 6 cu. ft. double door refrigerator, 15" TV, and this is just the beginning of what we offer over our competition in this weight category. Shown here is our 189ML in Harvest décor. The standard removable table in the 189ML and 199ML make it is easy to dine inside or outside. Simply store the table in the large lighted front pass thru storage and have even more

living space. The Express Super Lite by Passport left the weight at the curb and threw in everything including the kitchen sink!



# More for Less.

- 8' Wide Constuction
- 78" Interior Ceiling Height
- 32 cu. ft. of Pass Thru Storage
- 30/30/30 Holding Tank Capacity
- Crossover & SUV Towable Floorplans



**Your PASSPORT dealer:**

Colton RV  
 North Tonawanda, NY 14120  
 (716) 694-0188  
 (800) 628-4889  
[www.ColtonRV.com](http://www.ColtonRV.com)

Colton RV  
 Orchard Park, NY 14127  
 (716) 957-3250  
 (800) 628-4889  
[www.ColtonRV.com](http://www.ColtonRV.com)

Product information is as accurate as possible as of the date of publication of this brochure. Features, floor plans, and specifications are subject to change without notice. Please also consult Keystone's web site at [www.keystone-rv.com](http://www.keystone-rv.com) for more current product information and specifications. Tow Vehicle disclaimer: CAUTION: Owners of Keystone recreational vehicles are solely responsible for the selection and proper use of tow vehicles. All customers should consult with a motor vehicle manufacturer or their dealer concerning use or misuse of a tow vehicle. KEYSTONE'S LIMITED WARRANTY DOES NOT COVER DAMAGE TO THE RECREATIONAL VEHICLE OR THE TOW VEHICLE AS A RESULT OF THE SELECTION, OPERATION, USE OR MISUSE OF THE TOW VEHICLE. June 2009



2642 Hackberry Dr. • Goshen, IN 46526  
 (574) 535-2100

[www.keystone-passport.com](http://www.keystone-passport.com)

June/09