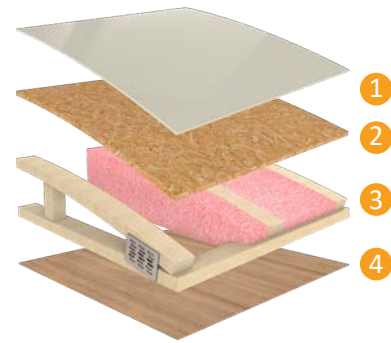




## DUTCHMEN® CONSTRUCTION ADVANTAGE

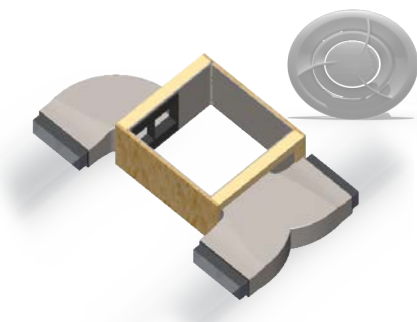
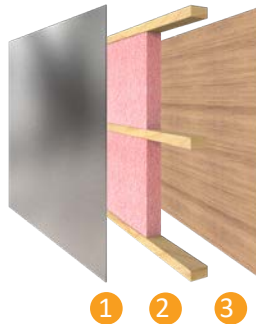


### Durable Roof Structure

- 1 TPO Roof
- 2 3/8" Decking
- 3 Fiberglass Insulation
- 4 Lauan Interior Panel

### Insulated Structure

- 1 Metal Exterior Panel
- 2 Wood Frame with R7 Thermal Insulation
- 3 Lauan Interior Panel



### Blade Air Flow System

This design reduces air turbulence and noise accelerating airflow with duct elbows and wyes that feature enlarged inlets and narrow as they push cooled air from the AC through the length of the ducting.

(On Ducted AC Models Only)

# MORE STANDARD FEATURES MORE VALUE

Dutchmen RVs turn more heads on the lot and in the campground than any other. Why? While other manufacturers offer features as options, Dutchmen tends to make those same features standard. Call it “bang for the buck,” “more for your money,” or simply “more value.” **We’ve built a reputation for bringing RV owners more standard features for less money** for more than 25 years . . . and it’s a reputation we plan to keep.



### 100% PRE-DELIVERY INSPECTION

At Dutchmen, quality is standard. Every single Dutchmen RV that comes off the line receives it’s own pre-delivery inspection. Every unit undergoes a thorough 253-point check to ensure accurate measurements, fully-functional electronics and components.



### THE INDUSTRY’S BEST RV WARRANTY

With this industry-best warranty, we take the guessing game out of what is and isn’t covered. So, that means you don’t have to wrangle over the details, because we deliver value by clearly outlining the major components we back during the first three years.



### THE LEADER IN PARTS AND SERVICE

Replacement parts. Routine checkups. Expert advice. You name it and we’ve got it covered. When only the best RV services will suffice, our industry-leading parts and service department is ready to help you get back on the road - and stay there longer than ever before.



## Your Dealer

Colton RV  
North Tonawanda, NY 14120  
(716) 694-0188  
(800) 628-4889  
[www.ColtonRV.com](http://www.ColtonRV.com)

Colton RV  
Orchard Park, NY 14127  
(716) 957-3250  
(800) 628-4889  
[www.Coltonrv.com](http://www.Coltonrv.com)

PO BOX 2000 | 2164 CARAGANA COURT | GOSHEN, IN 46527 | SALES 574.537.0600

[www.dutchmen.com](http://www.dutchmen.com)

Visit us online to see all the Dutchmen brands, innovative models and spacious floor plans.

\*All information & specifications are for units manufactured after 01/01/2021



Length is defined as the distance from the centerline of hitch pin/coupler to rear bumper of trailer. \*\*Our weights represent how most units are built, inclusive of many commonly-ordered options. \*\*\*Fresh water capacity includes water heater capacity.

DISCLAIMER: Product information is as accurate as possible as of the date of brochure publication. All features, floor plans and specifications in this brochure are subject to change without notice. Please consult Dutchmen’s website at [www.Dutchmen.com](http://www.Dutchmen.com) for current product information and specifications. Tow Vehicle Disclaimer. CAUTION: Owners of Dutchmen recreational vehicles are solely responsible for the selection and proper use of tow vehicles. All customers should consult with a motor vehicle manufacturer or their dealer concerning the purchase and use of suitable tow vehicles for Dutchmen products. Dutchmen disclaims any liability or damages suffered as a result of the selection, operation, use or misuse of a tow vehicle. DUTCHMEN’S LIMITED WARRANTY DOES NOT COVER DAMAGE TO THE RECREATIONAL VEHICLE OR THE TOW VEHICLE AS A RESULT OF THE SELECTION, OPERATION, USE OR MISUSE OF THE TOW VEHICLE. REFERENCE DUTCHMEN MANUFACTURING OWNERS MANUAL FOR LIMITED WARRANTY DETAILS. © 2020 Dutchmen 11-01-2020-COLORADO-Printed in U.S.A.

## Travel Trailers

**Make Every Journey Your Own**





# COLORADO

## FREE TO ROAM

Whether your travels lead across this great country or simply a staycation, the Colorado is your basecamp. Colorado is a lightweight travel trailer offering floor plans designed to maximize space and comfort yet engineered to accommodate smaller tow vehicles.

- **Colorado Power Package** - Every Colorado travel trailer comes standard with front and rear Power Stabilizers, Power Tongue Jack, and Power Awning with LED light to make setting up and breaking down your campsite a breeze.
- **Extra Large Pass Through Storage** - Carry more camping gear and personal belongings with you.
- **3 Year Structural Warranty** - Peace of mind knowing we have you covered along the way.

### EXTERIOR

High Output Furnace  
6 Gal. Gas Water Heater with DSI  
13.5K Roof Mount A/C  
Backup Camera Prep  
Solar Prep  
Spare Tire  
35 Amp Converter  
30 Amp Power Cord  
Power Awning w/LED Light  
Power Stabilizer Jacks  
Power Tongue Jack  
Friction Hinge Entry Door  
Magnetic Baggage Door Catches

### INTERIOR

3 Burner Range w/Glass Space Cover (select models)  
Galley Sink w/High Rise Faucet  
LED Interior Lighting  
Upgraded Residential Flooring  
Gas/Electric Refrigerator w/12v Option  
AM/FM/MP3 Player  
Full Extension Drawer Guides Throughout  
Blackout Night Shades Throughout  
Over Sized Windows  
Queen Bed  
Central Control Panel  
Fireplace in Slide Out Models Only



**COLORADO 19BHC**  
Length: 23' 5" Weight: 3,730 lbs. Sleeps: 6-8  
Hitch: 502 lbs. Height: 9'11"

\* Not all features available on Single Axle Models



**COLORADO 21RDC**  
Length: 25' 5" Weight: 4,270lbs Sleeps: 4-6  
Hitch: 528 lbs. Height: 11'3"



**COLORADO 24BHC**  
Length: 28' 8" Weight: 4,588 lbs. Sleeps: 6-8  
Hitch: 492 lbs. Height: 10'6"



**COLORADO 26BHC**  
Length: 30' 8" Weight: 5,719 lbs. Sleeps: 7-9  
Hitch: 810 lbs. Height: 11'1"



**COLORADO 29BHC**  
Length: 33' 3" Weight: 6,458 lbs. Sleeps: 7-9  
Hitch: 818 lbs. Height: 11'3"

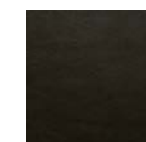


**COLORADO 29DBC**  
Length: 33' 3" Weight: 6,355 lbs. Sleeps: 4-6  
Hitch: 751 lbs. Height: 11' 3"



Model Shown 26BH

### INTERIOR DECOR



Titanium



Tungsten



Blended Wood  
Flooring



Painted Charcoal  
Cabinets



Arabesque Crystal  
Countertops

### Standard Features In Every Floor Plan



Power  
Stabilizer Jacks



Power Tongue  
Jack



Dual 20lb  
Propane Tanks



Residential  
Queen Bed



Prepped for  
WIFI 4G LTE



Solar  
Prep



Backup  
Camera Prep

\* Not all features  
available on Single  
Axle Models

\*All information & specifications  
are for units manufactured after  
01/01/2021

To learn more visit our website [dutchmen.com](https://dutchmen.com)