



# *Four Winds*

**CLASS-C MOTORHOME SPECIFICATIONS**







31A FLOORPLAN / GLAZED CHERRY WOOD / MILANO BROWN DÉCOR



31A FLOORPLAN / GLAZED CHERRY WOOD / MILANO BROWN DÉCOR





**GLAZED CHERRY**



**GLAZED MAPLE**



**MILANO BROWN**



**SIZZLE GREY II**



**URBAN STEEL**

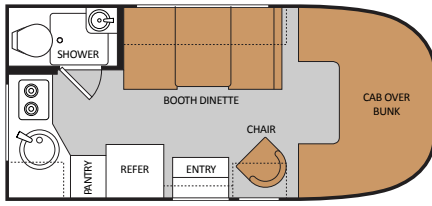


**STANDARD GRAPHICS**

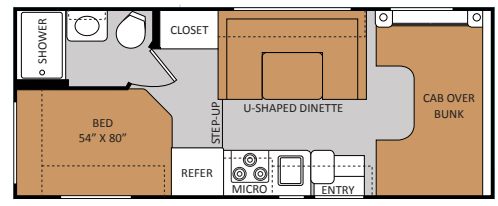


**AUTUMN MAPLE**

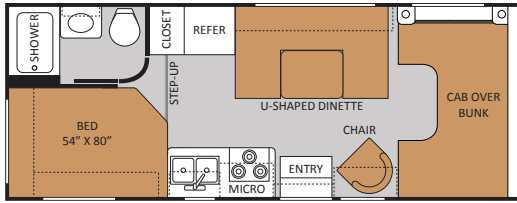




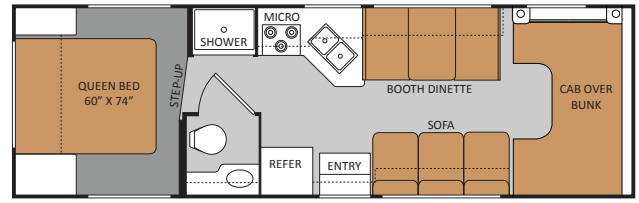
19G



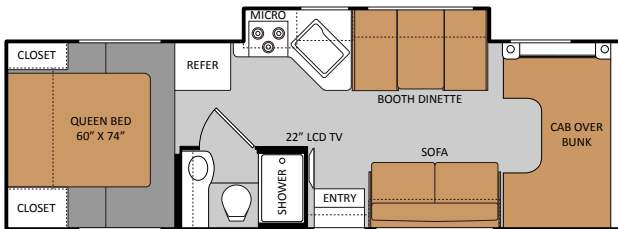
22E



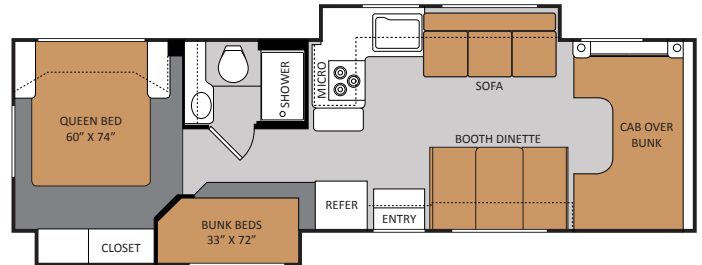
23U



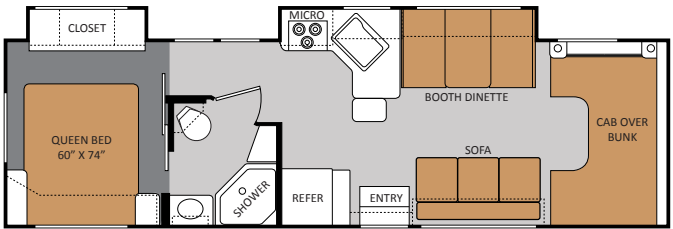
28A



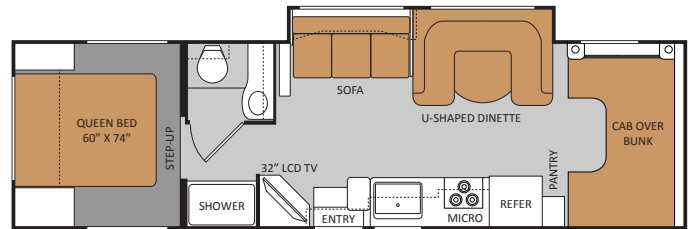
28Z



31A



31F



31K

**IMPORTANT - PLEASE READ:** Information published within this brochure reflects product design, fabrication, material, components and specifications at the date of printing. If your vehicle was manufactured before this brochure was published this information may not be accurate because vehicles assembled before the brochure was published may not have the same design, fabrication, materials, components and specification as represented in the brochure. If your vehicle was manufactured after this sales brochure was published the representations may not be accurate because, for product improvement reasons, we reserve the unilateral right, at any time, without prior notice, to make changes in product design, material, components and specifications. The date the brochure was published [i.e. "Julian date"] is set forth on the last page of the brochure. IF CERTAIN INFORMATION PUBLISHED WITHIN THIS BROCHURE IS SIGNIFICANT TO YOUR PURCHASING DECISION, PLEASE CONSULT WITH YOUR SELLING DEALERSHIP TO CONFIRM THAT THE INFORMATION IS ACCURATE WITH RESPECT TO THE VEHICLE YOU ARE CONSIDERING PURCHASING. Photographs in the brochure may depict optional equipment or may only be available in certain floor plans. We reserve the right to make changes in prices and models and to discontinue models without notice or obligation. Components, appliances and the chassis may have been manufactured in a calendar year before the vehicle's designated model year. All capacities are approximate. The actual length of the vehicle may differ from that indicated in the brochure due to variances in the manufacturing processes and/or installed components. All dry weights are based on standard model features and do not include optional features or equipment. Components, appliances and features may differ to conform to local codes. Due to EPA environmental restrictions, engine power and torque ratings may change during any model year. The Thor Motor Coach logo and its design are registered trademarks. Other products and company names are trademarks and/or registered trademarks of their respective manufacturer. While the color of the motorhome's exterior and the interior fabrics depicted in this brochure are fair and reasonable depictions, the colors depicted may not be exact match of the actual colors because of variances in photo processing and printing. Component part and appliance manufacturers issue limited warranties covering portions of the vehicle not covered under the limited warranty we issue. To learn specific details regarding warranty coverage please consult your selling dealership or review the warranty packet inside the vehicle.

MODEL	19G	22E	23U	28A	28Z	31A	31F	31K
Chassis (Ford/Chevy)	Ford	Ford / Chevy	Ford / Chevy	Ford / Chevy	Ford	Ford	Ford	Ford
Gross Vehicle (GVWR)	10,050	12,500 / 12,300	12,500 / 12,300	12,500 / 12,300	14,500	14,500	14,500	14,500
Gross Combined (GCWR)	13,000 / 16,000	18,500 / 16,000	18,500 / 16,000	18,500 / 16,000	22,000	22,000	22,000	22,000
Wheel Base	138"	158" / 159"	158" / 159"	90" / 191"	223"	223"	223"	223"
Exterior Length [w/o ladder]*	19' 7"	23' 11" / 24' 5"	24' 10" / 25' 4"	29' 9" / 30' 3"	32' 2"	32' 2"	32' 2"	32' 7"
Exterior Height [w/ AC]	10' 3"	10' 10"	10' 10"	10' 10"	10' 10"	10' 10"	10' 10"	10' 10"
Exterior Width [w/o mirrors]	90-5/8"	99"	99"	99"	99"	99"	99"	99"
Interior Height	80"	82" / 77"	82"	82"	82"	82"	82"	82"
Awning Size	8'	15'	15'	14'	14'	10' 6"	16'	16'
Fuel [gal]	37	55 / 57	55 / 57	55 / 57	55	55	55	55
LPG [lbs]	40	40.9	40.9	40.9	40.9	40.9	40.9	40.9
Fresh/Waste/Grey Water [gal]	20.5 / 17/16.5	50 / 24.5 / 37	40 / 24.5 / 38.5	40 / 25 / 22	40 / 26 / 31	40/26/31	40/28/28F-R	40/31/28F-R
Water Heater [gal]	6	6	6	6	6	6	6	6
Furnace (BTUs)	16,000	20,000	25,000	30,000	30,000	30,000	30,000	30,000
Exterior Storage Capacity [cu. ft.]	6.48	52.3	69.5	108.8	53.7	53.7	43.5	99.2

# STANDARD FEATURES AND OPTIONS

## CONSTRUCTION & EXTERIOR

- Slick Fiberglass Exterior
- Exterior Graphics Package
- Exterior Rear MEGA Storage Compartment (22E, 23U, 28A, 28Z & 31K)
- Seamless Roto-cast Storage Compartments
- Manual Patio Awning
- Slide-Out Room Awning (28Z, 31A, 31F & 31K)
- Roof Ladder
- Rubber Tread Entry Steps
- Drop Down Stairwell Entrance Step

## CONSTRUCTION & EXTERIOR OPTIONS

- Outside Shower
- Exterior Graphics w/Partial Paint Package
- Electric Patio Awning (N/A 19G & 31A)

## AUTOMOTIVE & COCKPIT

- AM/FM Dash Radio w/Oversized Buttons, CD Player & Weather Band Tuner; iPod & Sirius Satellite Ready
- Deluxe Exterior Mirrors
- Metal Running Boards
- 3,500-lb. Trailer Hitch (19G Only)
- 5,000-lb. Trailer Hitch (N/A 19G)
- Aluminum Wheels (19G Only)

## AUTOMOTIVE & COCKPIT OPTIONS

- Spare Tire (N/A 19G)
- Convenience Package: Keyless Entry/Valve Stem Extenders (N/A 19G)
- Deluxe Heated Remote Exterior Mirrors (N/A 19G)
- Wheel Liners (N/A 19G)
- Leatherette Driver & Passenger Captain's Chairs
- Power Driver's Seat (Ford Chassis Only) (N/A 19G, 22E, 23U & 28A)
- Back-up Monitor

## INTERIOR

- Residential Linoleum Throughout (19G, 22E & 23U)
- Residential Linoleum (Kitchen, Bath and Living Area) (28A, 28Z, 31A, 31F & 31K)
- Metal Entry Grab Handle
- Windshield Privacy Curtain
- 13,500 BTU Roof Air Conditioner in Front
- Hardware with Brushed Nickel Finish
- Night Shades

- Fabric Barrel Chair (19G & 23U)
- Fabric Jackknife Sofa (28A, 28Z, 31A & 31F)
- Leatherette Hide-a-Bed Sofa with Air Mattress (31K Only)
- Booth Dinette (19G, 28A, 28Z, 31A, & 31F)
- Fabric U-shaped Dinette (22E & 23U)

## INTERIOR OPTIONS

- Leatherette U-shaped Dinette (23U & STD 31K)
- Fantastic Fan
- Fantastic Fan in the Overhead Bunk (N/A 19G)
- Leatherette Jackknife Sofa (28A, 28Z, 31A & 31F)
- Leatherette Euro Chair w/Ottoman IPO Barrel Chair (23U)
- 15,000 BTU Roof Air Conditioner in Front (N/A 19G & 22E)

## KITCHEN

- Single Door Refrigerator (19G Only)
- Double Door Refrigerator (N/A 19G)
- 2-Burner High-output Gas European Range Top w/Glass Cover (19G Only)
- 3-Burner High-output Gas Range Top (N/A 19G)
- Microwave Oven
- Pantry (31F & 31K)
- Laminate Countertops
- Flip-up Countertop Extension (N/A 19G, 28A & 28Z)
- Full Extension Metal Drawer Guides

## KITCHEN OPTIONS

- 3-Burner High-output Gas Range Top with Oven (N/A 19G)
- Convection Microwave

## ENTERTAINMENT

- 22" LCD Television (28Z Only)
- Entertainment Center with 32" LCD Television (Midship) (31K)
- Television Antenna & Booster
- Cable Television Prep
- HD/DSS Satellite Prep (N/A 19G)

## ENTERTAINMENT OPTIONS

- 26" LCD Television on Electric Swivel, Side mounted in Cab-over (N/A 19G, 28Z & 31K)

- 22" LCD Television on Swivel, Side Mounted in Cab-over (N/A 28Z & 31K)
- 19" LCD Television on Swivel, Side Mounted in Cab-over (N/A 28Z & 31K)
- Portable 19" LCD Television in Bedroom - can be removed and mounted to exterior hook-ups (28A, 28Z, 31A, 31F & 31K)
- (2) 13" LCD Televisions with DVD Player in Bunk Beds (31A)

## BEDROOM & BATHROOM

- Queen Size Bed (N/A 19G)
- Bunk Beds in Hallway Slideout (31A Only)
- Bedspread and Pillow Shams (N/A 19G)
- Power Bath Vent
- Plastic Marine Toilet (19G Only)
- China Bowl Toilet (N/A 19G)
- Rectangular Shower with Curtain (19G & 22E)
- Shower with Glass Door (N/A 19G & 22E)

## SAFETY & CONVENIENCE

- Entry Door with Deadbolt Lock
- Smoke, LPG, Carbon Monoxide Detectors
- Fire Extinguisher
- Systems Control Center

## SAFETY & CONVENIENCE OPTIONS

- Child Safety Seat Tether Anchor in Dinette

## ELECTRICAL & PLUMBING

- Onan RV MicroQuiet™ 4.0 (4000-kilowatts) Gas Generator
- 30 amp Service with Shore Line Power Cord
- Battery Disconnect Switch
- Emergency Start Switch
- Auxiliary House Battery
- 6-gallon DSI Gas Water Heater
- Water Heater Bypass System

## ELECTRICAL & PLUMBING OPTIONS

- Holding Tanks w/Heat Pads
- Automatic Shoreline-to-generator Transfer Switch
- Second Auxiliary House Battery (N/A 19G)
- 6-gallon DSI Gas/Electric Water Heater



Four Winds



SCAN THE QR CODE WITH YOUR SMART PHONE

### YOUR LOCAL TMC DEALER:

Colton RV  
North Tonawanda, NY 14120  
(716) 694-0188  
(800) 628-4889  
www.ColtonRV.com

Colton RV  
Orchard Park, NY 14127  
(716) 957-3250  
(800) 628-4889  
www.ColtonRV.com



Go RVing.