

Cedar Creek

HATHAWAY EDITION

Cedar Creek
HATHAWAY EDITION
FIFTH WHEELS



THE SMART CHOICE FOR THE EXPERIENCED RV'ER



THE SMART CHOICE-

Experienced RVers know what they want. Cedar Creek is dedicated to helping people enjoy the outdoors by building better quality recreational vehicles. With over 18 years in the RV industry, Cedar Creek is truly considered one of the best built products in the marketplace. Many of our owners are enjoying their second and third units. This year the Hathaway Edition has been freshly redesigned with over 36 updates. Come see for yourself why Cedar Creek is the smart choice for the experienced RVer.

KITCHEN FEATURES:

Anything but basic - Cedar Creek's modern luxury kitchens are a central living space to prepare meals, enjoy dinner and relax comfortably with family and friends.

- ◆ Redesigned island base and overhead medallion
- ◆ Stainless steel 30" microwave with outside vent
- ◆ Recessed large stainless steel oven with Piezo igniter, sealed burners and glass cover with solid surface handle
- ◆ 19 Cu. ft. stainless steel, residential refrigerator with ice maker and dedicated inverter
- ◆ Self-closing kitchen drawer guides plus a double waste basket cabinet
- ◆ Removable silverware organizer
- ◆ Solid surface LG® counter tops with oversized, 60/40 stainless steel sinks
- ◆ Freestanding table with four chairs and leaf extension (2 folding, 2 solid chairs)
- ◆ Full Size Pantry with full extension, 7 drawer storage (N/A 34RE, 34RL2)
- ◆ Dining with a view, automotive frameless windows - 100% of our windows open



Cedar Creek's residential design creates a feeling of home away from home. Name brand products including Congoleum®, Shaw®, Whirlpool®, La-Z-Boy® and LG® offer high quality products for comfort and peace of mind while on the road.

A stainless steel dishwasher is optional on select models. (36CKTS, 36CK2, 38CK2, 38FBD)

36CK2

Cedar Creek

HATHAWAY EDITION



34RE



GOLD DUST DECOR

The 34RE features a rear entertainment center with a 55" television on an electric hide-a-way lift. When you're not watching TV, retract it for a panoramic outdoor view. When the slide rooms are in, this floorplan allows free access to the kitchen, bathroom, and bedroom. The hide-a-bed sofa provides an extra sleeping area. This kitchen, shown above, features our 13 cu. ft. gas electric refrigerator with solid wood front.

INTERACTIVE MOBILE MANUALS

Download our Cedar Creek mobile app or visit our dynamic online manual to enhance your ownership experience. These interactive options provide incredible ease and insight into use, maintenance and enjoyment of your Cedar Creek product. Ranging from "How-To" videos, pictures and illustrations of various components, systems and features, to fully searchable content and downloadable PDFs for individual component owner's manuals, answers are always just a click away.

View the online manual at www.forestriverinc.com/cedarcreek/ownersmanuals, or download our FREE app from the App Store or Google. Play!



38FBD

EXPERIENCED TRAVELER'S DREAM -

The 38FBD floorplan offers luxury features that make RV ownership a pleasure. Home style amenities including a full pantry, 1-1/2 baths, a main level washer/dryer closet, a 90" La-Z-Boy® sofa, king bed, a "Big Boy" shower, a full wardrobe closet and double sinks in the main bath, enhance comfort, convenience and relaxation.





Cedar Creek's luxurious bathrooms include a spacious 48" one-piece fiberglass residential shower with a large seat and triple sliding glass doors, plus an 18" tall porcelain toilet with circular flush and a Fantastic Fan. Our 34RL2, 36CK2, 38CK2 and 38FBD floorplans include this beautiful, double LG basin vanity with a counter area that's 40% larger than a single sink vanity, plus large framed mirrors, a medicine cabinet and plenty of room for toiletries.



Serta



LUXURIOUS BEDROOM



38FL6

The 38FL6 front living area features two Hide-a-bed sofas, and a wall-hugger love seat with individual foot rests. Sit back, relax and enjoy the entertainment center in peace and comfort with the roof mounted Whisper Quiet High Performance air conditioner with cold air returns. Shown with Raven decor and Baltimore Cream.



This 36" electric fireplace includes a pull out hidden storage area. (N/A on 34RE)

ANYTHING BUT BASIC -

Cedar Creek's modern luxury kitchens are a central living space to prepare meals, enjoy dinner and relax comfortably with family and friends.





34RL2

SANDSTONE DECOR

The 12V Jensen Home Theater System can fully integrate with smart devices, including Apple, and features a 55" LED TV, CD/DVD player, and AM/FM stereo with weather band. The 12V sound bar has two mid-tone speakers, two tweeters, two sub-woofers and two outside speakers. Download the JControl app and have complete control of your stereo from all of your mobile devices, indoors or out.



Cedar Creek
HATHAWAY EDITION

RECLINERS AND THEATRE SEATING

Live life comfortably with our standard La-Z-Boy® sofa sets. Choose Chestnut or Baltimore Cream recliners, or theater seating for residential comfort that lasts a lifetime. Option a wall hugger theater seat for no extra charge or upgrade to power theater seating.



CHESTNUT



BALTIMORE CREAM



Our La-Z-Boy® Hide-a-Bed sofas include a La-Z-Boy® quilted mattress.



Dirt Devil® CV950 central vacuum cleaning system with VacPan™ automatic dustpan at entry door.



Wireless Remote Control - A Forest River exclusive that has controls for the electric awning, slide rooms, all jacks including the optional "level-up", and security entrance lighting.



Our freestanding table comes standard with a large leaf extension and four chairs, (two with hidden storage and two fold-away).



Aluminum skirting is wrapped all the way to the frame for a clean, crisp looking exterior with a fully enclosed underbelly.



This newly designed 5 tier, folding entry step gives you an easier entry into our extra wide 32" entry door.

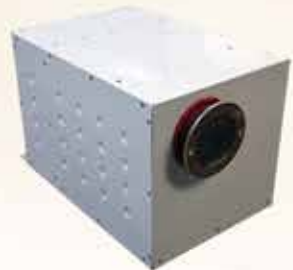
Docking Station includes outside shower, black tank flush, water bypass, 12V battery disconnect, selector switches, dump valves, water tank and city fills for centralized convenience.



All fifth wheels are now prewired for easy wireless observation camera installation at the dealership for safe, convenient rear viewing when backing up and on the road.



Removable "Soft Top" Vinyl Storm Doors allow light and visibility without losing cooling or heating.



All Cedar Creeks are now equipped with a two-stage, on demand, water heater with 5 burners. It uses 50% less propane than a standard RV water heater and has freeze protection.



Cedar Creek's original design "Z-frame" chassis. This frame gives our customers over 100 cu. ft. of storage space, turning their front storage compartment into a front storage shed.



A&E metal wrapped awning with LED night light strip.



Another feature that we've taken from residential construction is our super quiet "HP" (High performance) 15,000 BTU air conditioning system, which includes a larger compressor and cold air returns! This means 30% more air is being forced into the coach than a standard 15,000 BTU air conditioner.



These day shades with blackout roller shades offer the best of both worlds. They're actually two shades in one - a night fabric lowers completely for privacy, or can be retracted to the top to reveal a full length day shade. Both day and night shades can be set in any position and are designed with speed and length controls for privacy or a scenic view.

OPTIONAL "LEVEL-UP"™ 6 POINT HYDRAULIC STABILIZATION SYSTEM



Rated #1 Customer Preferred Option
Leveling and stabilizing a fifth wheel has never been easier. Patented "Level-Up" technology makes set ups faster, and a lot safer than the older systems. This system stabilizes the coach once the legs have been set.

Cedar Creek
HATHAWAY EDITION

Cedar Creek

HATHAWAY EDITION

Side Walls R-Value (9)

◆ Handmade 2" x 2" - 16" (or less) on center sidewalls with individually fastened custom "L" brackets combined with 3M® Silaprene adhesives for a stronger frame without welding or lamination. (475 PSI at 2" per minute, marine grade)

- ◆ Nobel "True" Classic Performance Plus Gelcoat on all exteriors - the best of the best in fiberglass. Don't accept "hi-gloss fiberglass" or "gel-coated" sidewalls - only True Performance Plus Gelcoat stands the test of time.
- ◆ All baggage doors and entry doors are made out of Nobel Classic True Gelcoat exterior to prevent uneven aging of your unit

- ◆ 3M® Silaprene Bonded Sidewalls - resilient, grows stronger with age. Also has outstanding resistance to UV, heat, cold, moisture, oils, gasoline, highway chemicals, and creates a bond that cannot delaminate with time
- ◆ Sidewalls are bolted to the floor with 5/16" x 6-1/2" carriage bolts at each outrigger
- ◆ Glued R-7 fiberglass insulation expanded to its full capacity within the sidewall frame
- ◆ Designed by Forest River, a new unique slide-out seal system for tighter, stronger water protection - first of its class - compare it!
- ◆ Slide rooms insulated on all five sides

Floors R-Value (38)

- ◆ 3" Aluminum frame floor with in-floor heat ducting and radius "L" brackets combined with 3M® Silaprene adhesives
- ◆ Cambered 10" + 2" I-beam "Z" frame with large support outriggers and full length welds
- ◆ 5/8" Tongue and groove plywood floor is attached to the aluminum frame with Silaprene and screwed every 6"
- ◆ Darco waterproof underbelly
- ◆ Fully enclosed 4' x 8' ABS removable panels for easier access into the underbelly. We use wood stringers to attach with no holes in the frame
- ◆ Triple layer insulation enhances the protective values of plywood, vinyl, carpet, carpet pads, tank heaters, etc.
- ◆ 12 Volt tank heaters on all tanks
- ◆ Radiant shield insulation - 97% reflectivity, 3% emission

Roof R-Value (38)

- ◆ Full length 3/8" wood roof decking for a full walk-on roof (Screwed - not stapled)
- ◆ Triple layer insulation supplements the cohesive retention factors of roof decking and rubber membrane
- ◆ 2" x 2" - 16" OC -5" truss roof rafters with 8" wide circular air duct. Circular ducting combined with our high performance (bigger compressor) air conditioner gives Cedar Creek a 30% increase in air conditioning performance over our competitors in hotter climates
- ◆ Optional second Whisper Quiet roof mount air conditioner (Bedroom)
- ◆ Two ply - Tuff Ply rubber roof membrane with built-in fire retardant. (12 Year warranty)
- ◆ Full length drip rails from the front to the rear of the unit
- ◆ Roof is bolted to sidewall with 5/16" x 3-1/2" carriage bolts
- ◆ Radiant shield insulation - R Value 38, 97% reflectivity, 3% emission
- ◆ Fully ducted 15,000 BTU high output A/C with cold air returns that are also braced and wired for an optional ducted second A/C



Cold room tested to zero degrees Fahrenheit with standard insulation and heating pads.

SUPERIOR PERFORMANCE

 **Dexter® Axles/Brakes Suspension**
DEXTER AXLE For Performance and Safety

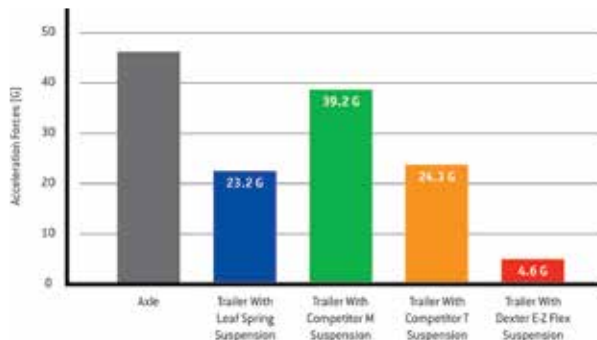
- ◆ Nev-R-Adjust® Brakes are always properly adjusted for improved stopping power in half the distance
- ◆ E-Z Flex® rubber equalization system with 1/2" link plates and eight grease zerks per side
- ◆ Heavy duty axles with bronze bushings in shackles (No plastic bushings like our competitors)
- ◆ 16" Eight lug, ST, "G" rated, 14 ply tires on 7000 lb. Dexter® Axles



Dexter Nev-R-Adjust®
Brakes Standard



Dexter E-Z Flex®
Suspension Standard



Compare acceleration forces experienced by an axle and trailer while traveling over railroad tracks at 30 MPH. The E-Z Flex® System provides up to an 80% reduction in forces on the trailer frame vs. a standard equalizer. E-Z Flex® significantly outperforms all other competitors in the same road test for a smoother, more protective ride for your trailer and cargo.

Aluminum Frame Construction

State-of-the-art construction techniques along with top grade building components give Cedar Creek its reputation for long-lasting quality.

- Cedar Creek's famous all aluminum super-structure
- Bonded True Nobel Classic™ Pearl gelcoat exteriors
- Hehr automotive frameless windows
- Optional Level-Up 6-point hydraulic leveling system
- The Dexter® difference - safety and performance package
- Wired for wireless rear camera
- Soft top vinyl storm doors
- Remote control for slides, hydraulic jacks, awning and security lights
- Black metal wrapped A&E awnings with LED night light strip
- Radiant Shield thermo-foil R-38 value
- Heating pads on all tanks



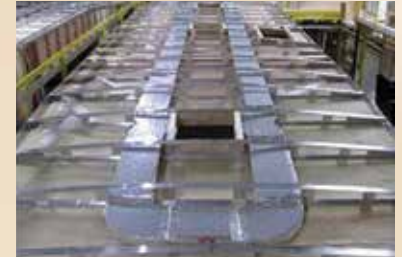
True Nobel Classic fiberglass gelcoat exteriors and end walls. Truly the best of the best in fiberglass. Accept no imitations.



Residential Glasswool Insulation, designed by nature.



3" Aluminum floor studs, heat duct and 5/8" tongue and groove plywood floor.



High-Performance Quiet Zone™ Ducted Air System with a 15,000-BTU HP air conditioner, a residential-style return air duct system and Comfort Control Center creates a dynamic combination for powerful results. It's the most efficient AC system in existence with both the industry's highest-performance AC and the industry's lowest power draw, with second Bedroom air conditioner too!



Aluminum window frames.



Cedar Creek's famous residential All-aluminum Super-structure (Roof, sidewalls, and floor) on 16" centers or less.



R-38 Radiant shield Thermo-foil wrap through ceilings, underbellies and under front caps.

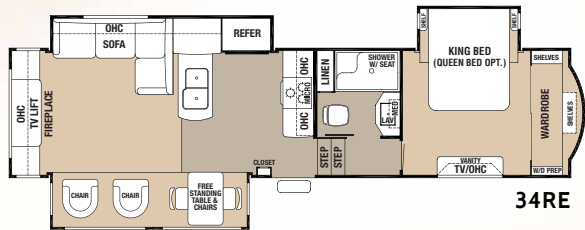


For more on Cedar Creek's famous all aluminum superstructure watch our plant tour video or read our construction booklet, "Back to Basics" Cedar Creek construction at www.forestriverinc.com/cedarcreek.

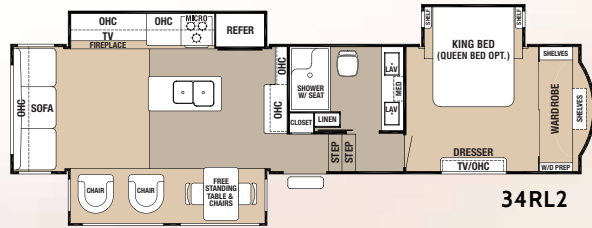
Cedar Creek

HATHAWAY EDITION

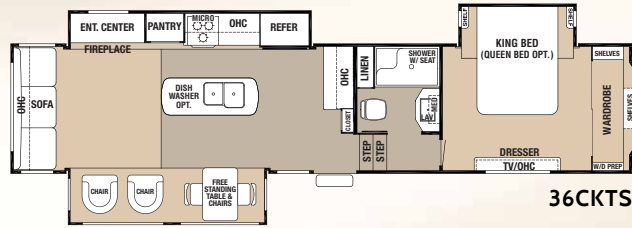
FLOORPLANS



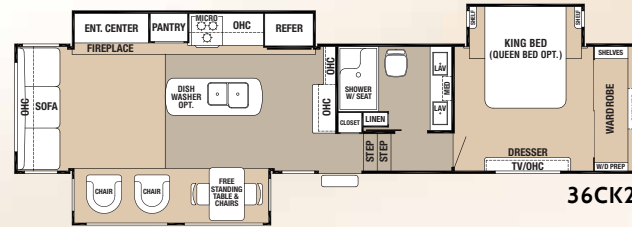
34RE



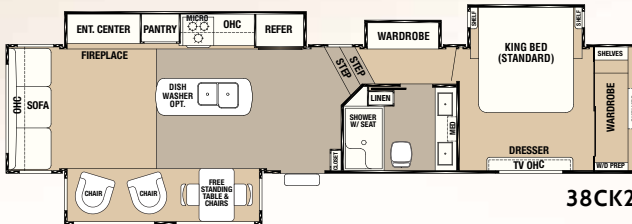
34RL2



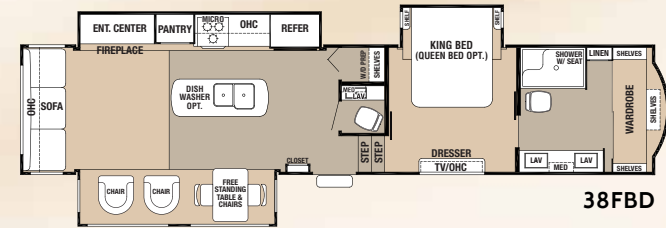
36CKTS



36CK2

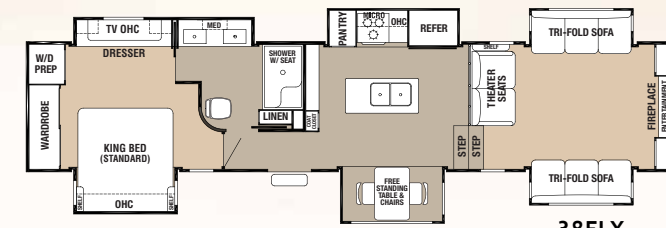


38CK2



38FBD

COMING IN NOVEMBER!



38FLX

SPECIFICATIONS

MODEL	34RE	34RL2	36CKTS	36CK2	38CK2	38FBD	38FLX
GVWR	15853 lb	16270 lb	16407 lb	16525 lb	18000 lb	18000 lb	18000 lb
Hitch Weight	1853 lb	2270 lb	2500 lb	2525 lb	TBD	2295 lb	TBD
UVW	11955 lb	12009 lb	12670 lb	13075 lb	TBD	13765 lb	TBD
CCC	3898 lb	4733 lb	3737 lb	3391 lb	TBD	4176 lb	TBD
Exterior Length	37'	37' 11"	39' 10"	40' 7"	40' 7"	41' 8"	41' 9"
Exterior Height	13'	13'	13'	13'	13'	13'	13'
Exterior Width	96"	96"	96"	96"	96"	96"	96"
Fresh Water	69 gal	69 gal	69 gal	69 gal	69 gal	69 gal	69 gal
Gray Water	80 gal	80 gal	80 gal	80 gal	80 gal	80 gal	80 gal
Black Water	40 gal	40 gal	40 gal	40 gal	40 gal	80 gal	40 gal
Awning Size	16 ft	16 ft	18 ft	18 ft	18 ft	18 ft	21 ft

All Weights listed above are base weights. Weight capacities +/- 5%. NOTE: All fifth wheel lengths include extended pin box and 4" bumper. Model number of any particular unit does not necessarily reflect the overall length of the unit itself.

GVWR (Gross Vehicle Weight Rating) - is the maximum permissible weight of the unit when fully loaded. It includes all weights, inclusive of all fluids, cargo, optional equipment and accessories. For safety and product performance do NOT exceed the GVWR.

GAWR (Gross Axle Weight Rating) - is the maximum permissible weight, including cargo, fluids, optional equipment and accessories that can be safely supported by a combination of all axles.

UVW (Unloaded Vehicle Weight)* - is the typical weight of the unit as manufactured at the factory. It includes all weight at the unit's axle(s) and tongue or pin and LP Gas. The UVW does not include cargo, fresh potable water, additional optional equipment or dealer installed accessories.

CCC (Cargo Carrying Capacity)** - is the amount of weight available for fresh potable water, cargo, additional optional equipment and accessories. CCC is equal to GVWR minus UVW. Available CCC should accommodate fresh potable water (8.3 lbs. per gallon). Before filling the fresh water tank, empty the black and gray tanks to provide for more cargo capacity.

*Estimated Average based on standard build optional equipment. ** Estimated average based on standard build optional equipment.

Each Forest River RV is weighed at the manufacturing facility prior to shipping. A label identifying the unloaded vehicle weight of the actual unit and the cargo carrying capacity is applied to every Forest River RV prior to leaving our facilities.

The load capacity of your unit is designated by weight, not by volume, so you cannot necessarily use all available space when loading your unit.

All information contained in this brochure is believed to be accurate at the time of publication. However, during the model year, it may be necessary to make revisions and Forest River, Inc., reserves the right to make all such changes without notice, including prices, colors, materials, equipment and specifications as well as the addition of new models and the discontinuance of models shown in this brochure. Therefore, please consult with your Forest River dealer and confirm the existence of any materials, design or specifications that are material to your purchase decision.

FEATURES AND OPTIONS

HATHAWAY EDITION PACKAGE

- ◆ Jensen Home Theater System includes: 55" LED TV, CD/DVD Player, AM/FM Stereo, Weather Band and JControl App for your smart devices. Apple licensing is also included
- ◆ 12V sound bar with 2 mid-tone speakers, 2 tweeters, 2 sub-woofers and 2 outside speakers
- ◆ Honey glazed, high sheen, European Beech cabinetry
- ◆ 36" Fireplace with remote and hidden storage
- ◆ Newly designed window valances
- ◆ LED lighting fixtures with 4" LED ceiling lights
- ◆ 90" La-Z-Boy® Sofa and recliner set with lifetime warranty on parts. (90" sofa is N/A 34RE and 38FLX)
- ◆ Solid surface LG® countertops with oversized 60/40 stainless steel sinks
- ◆ Self-closing drawer guides with silverware organizer
- ◆ Full residential pantry with 7 full extension drawers (N/A 34RE, 34RL2)
- ◆ Shaw® R2X stain and soil resistant carpeting in all living room and bedroom areas
- ◆ "Big Boy" bathroom with double bowl counter, 40% larger than a standard bath with linen closet (34RL2, 36CK2, 38CK2, 38FBD)
- ◆ Serta® Winding River king bed with full size head board
- ◆ Redesigned closet is 4" deeper with wider glass doors and closet shelving for easy access (N/A 34RL2, 34RE and 38FLX)
- ◆ Congoleum® Carefree™ designer flooring
- ◆ Linoleum kitchen slide
- ◆ Full panel backsplash
- ◆ Redesigned island base and overhead medallion
- ◆ Framed mirror and medicine cabinet in the bathroom
- ◆ 48" x 30" Ezy Step one-piece fiberglass shower

EXTERIOR FEATURES

- ◆ "True" pearl gelcoat exterior - truly the best of the best in gelcoat exteriors. 40% thicker and keeps its high gloss longer than our competitors less expensive exteriors

- ◆ Front and rear "True" gelcoat with front painted cap
- ◆ DEXTER® SAFETY AND PERFORMANCE PACKAGE
 - Nev-R-Adjust® brakes are always properly adjusted for improved stopping power in half the distance
 - E-Z Flex® rubber equalization system with 1/2" link plates and (8) grease zerks per side
 - E-Z-Lube® heavy duty axles with bronze bushings in shackles
- ◆ 16" 8-lug, ST, "G" rated tires on 7,000 lb. Dexter® axles (34RE, 34RL2, 36CKTS, 36CK2)
- ◆ 17.5" 8-lug, ST, "H" rated tires on 8,000 lb. Dexter® axles (38CK2, 38FBD, 38FLX)
- ◆ Prepped for wireless observation system
- ◆ 100% Hehr® automotive frameless windows with tinted safety glass - all windows open!
- ◆ 19 Cu. ft. stainless steel electric refrigerator with inverter and ice maker
- ◆ Dirt Devil® central vacuum system automatic dustpan
- ◆ Roof satellite pre-wire to roof and docking station to both the living room and the bedroom
- ◆ Thicker 1-1/4" compartment doors with slam door latches and dedicated key lock
- ◆ Larger 32", friction hinge, entry door with "Soft top" storm doors
- ◆ New folding, 5 tier entry step
- ◆ Black metal wrapped electric awning with LED night strip
- ◆ 50 Amp service
- ◆ Solid state 65 Amp power converter
- ◆ Central docking station
- ◆ Ducted 15,000 BTU Duo-Therm "HP" (High performance) air conditioner with larger compressor, circular motion, 8" ductwork and cold air returns. The larger compressor forces 30% more air into the coach - the most powerful air conditioner in RVs today.
- ◆ Hydraulic front landing jacks placed outside the frame with 8" round landing pads
- ◆ Braced and wired for second air conditioner



- ◆ Rear ladder
 - ◆ Radius wrapped bottom metal skirt to the frame
 - ◆ Remote control operates safety entry lights, slide-outs, electric awning and jack legs of the 6-point leveling system
 - ◆ Selector switches for slide-rooms
- ### LIVING ROOM
- ◆ Ceiling fan
 - ◆ (1) Barstool (N/A 34RE, 38FLX)
 - ◆ Sculpted solid hardwood slideroom fascia in living room
 - ◆ Day shade and blackout roller shades

KITCHEN FEATURES

- ◆ Create-A-Breeze Fantastic fan with thermostat and rain sensor
- ◆ Stainless steel 30" over the range microwave vented to the outside
- ◆ Recessed stainless steel large oven with Piezo igniter, sealed burners and glass cover with solid surface handle
- ◆ Hidden hinges
- ◆ Large crown and cove molding throughout
- ◆ Free standing table with hidden table leaf extension, (2) standard chairs and (2) folding chairs

MISCELLANEOUS FEATURES

- ◆ Suburban two-stage, on-demand water heater
- ◆ 12V battery disconnect
- ◆ Dometic comfort control center with dual zone control for heating and cooling
- ◆ Washer/dryer prep
- ◆ LP gas/carbon monoxide detector
- ◆ Smoke detector
- ◆ Suburban 40,000 BTU furnaces
- ◆ One year of Coach Net roadside assistance
- ◆ Membership to the Forest River Owner's Group (F.R.O.G.)

BEDROOM FEATURES

- ◆ 32" LED Jensen Television
- ◆ Ceiling mounted overhead reading lights with individual switches
- ◆ Radius ceilings with a full 6'9" of bedroom height

OPTIONS

- ◆ Level-Up hydraulic 6-point leveling system
- ◆ 15,000 BTU ducted "Whisper Quiet" Penguin second air conditioner
- ◆ Third 15,000 BTU ducted "Whisper Quiet" Penguin air conditioner with power management system
- ◆ 13 Cu. ft. side-by-side gas/electric refrigerator with raised wood fronts
- ◆ 20 Cu. ft. stainless steel French door electric refrigerator with pull-out lower freezer compartment, inverter and ice maker
- ◆ 30" Stainless steel convection oven/microwave
- ◆ Dishwasher
- ◆ Serta® Hanford Luxury queen and king mattress
- ◆ Awning toppers with metal wraps
- ◆ 12' Electric Slide room awning with metal wrap (N/A 38FLX)
- ◆ 1-1/4" Bike rack receiver hitch
- ◆ Create-A-Breeze Fantastic fans with thermostat and rain sensor in the bedroom area
- ◆ Full Body Paint - Classic, Midnight Mist, Kristal
- ◆ Heat pump on main air conditioner
- ◆ Matching ottoman with hidden storage
- ◆ Theater seating IPO recliners (No charge)
- ◆ Power theater seating IPO recliners
- ◆ Vinyl flooring throughout
- ◆ Rebond carpet pad
- ◆ LP generator prep
- ◆ Onan 5.5 kw Marquis Gold LP generator
- ◆ Cadet self-regulating bedroom wall heater
- ◆ Splendide® combination washer/dryer
- ◆ Splendide® stackable washer/dryer
- ◆ Wireless rear observation camera
- ◆ Dual pane windows
- ◆ Trail Air™ air ride hitch coupler
- ◆ 50 Amp cord reel
- ◆ Solar prep
- ◆ 200W Solar panels
- ◆ 12 Gal. gas/electric water heater

DECOR

SANDSTONE



GOLD DUST



RAVEN



DOMINO





KRISTAL



MIDNIGHT MIST



CLASSIC

CEDAR CREEK "TOURING EDITION" FULL BODY PAINT

Full Body Paint, adorned with Cedar Creek graphics, will turn heads wherever you travel. These bold new exterior options are offered along with our Standard Graphics and Custom Paint choices.



Forest River, Inc. encourages our customers to purchase their Forest River products from a local dealership whenever possible for the following reasons:

- 1) Forest River, Inc. dealers are independently owned and operated businesses so priority service and scheduling is at their discretion and is often provided to customers that purchased their unit at that dealership.
- 2) Purchasing locally allows customers to establish meaningful relationships with a dealer, enhancing the RV experience through assistance with product questions, user tips or RV regulations for your state or country, and much more!
- 3) Canadian customers must meet requirements to bring an RV purchased out of the country to their home. These requirements may involve additional inspections and certifications, taxes and fees. Your local Canadian Dealer is a professional at meeting these requirements.
- 4) Scheduling timely warranty repairs and adjustments through a local dealership provides far greater flexibility and convenience to you, the customer!

It is the goal of Forest River, Inc. that all of our RV owners fully enjoy the RV experience and that customer satisfaction meets or exceeds their expectations!



PRE-DELIVERY INSPECTION FACILITY

20,000 square feet of quality assurance. The bare essentials for a premium product. This state-of-the-art facility gives immediate daily feedback to production for quality assurance in every unit built.

FREE MEMBERSHIP
to Forest River Owners' Group

www.forestriverfrog.com



24/7 EMERGENCY ROADSIDE ASSISTANCE

For a worry-free ownership experience
 Forest River includes one year of Coach-Net RV Technical & Roadside Assistance with each RV purchase. Whether new to the RV lifestyle or an experienced RV enthusiast, Forest River owners have 24/7 access to technical, operational and emergency road service coverage throughout the US & Canada. Coach-Net's fast, dependable service is just a phone call away.

Coach-Net[®]

RV Technical & Roadside Assistance



Learn More
Scan this barcode using a QR Reader on your smart phone to learn more about Forest River.



A Berkshire Hathaway company.



HATHAWAY EDITION

The Smart Choice for the Experienced RV'er
 FOREST RIVER INC. / CEDAR CREEK DIVISION
 501 Hawpatch Road / Topeka, IN 46571 ♦ Phone : 260-593-2404 / Fax: 260-593-2447
 Parts & Service / Ph: 260-593-3017 / Fax: 260-593-2645
 On The Web at: www.forestriverinc.com/cedarcreek

All information contained in this brochure is believed to be accurate at the time of publication. However, during the model year, it may be necessary to make revisions and Forest River, Inc., reserves the right to make all such changes without notice, including prices, colors, materials, equipment and specifications as well as the addition of new models and the discontinuance of models shown in this brochure. Therefore, please consult with your Forest River dealer and confirm the existence of any materials, design or specifications that are material to your purchase decision. ©2016 Cedar Creek, a Division of Forest River, Inc., a Berkshire Hathaway company. All Rights Reserved. 10/16

YOUR CEDAR CREEK DEALER

Colton RV & Marine
 3122 Niagara Falls Blvd
 North Tonawanda, NY 14120
 (716) 694-0188
www.ColtonRV.com

Colton RV
 3443 Southwestern Blvd.
 Orchard Park, NY 14127
 (716) 957-3250
www.Coltonrv.com