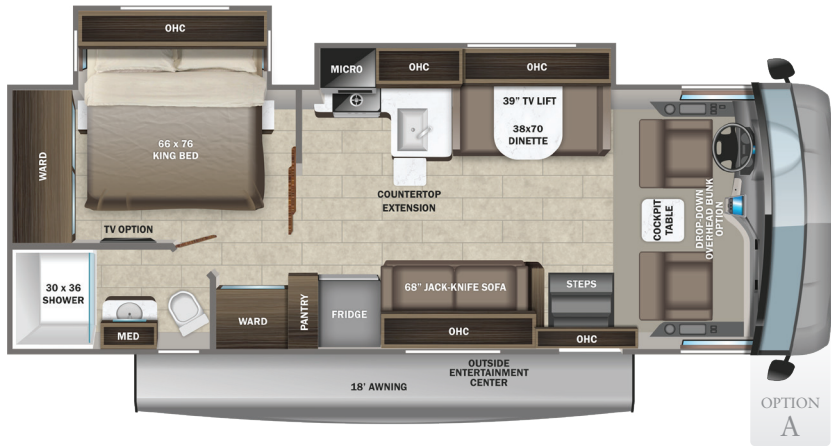
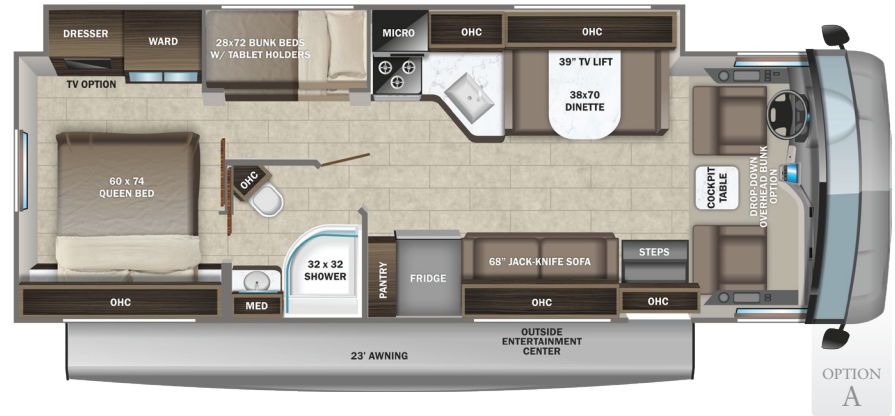


27A



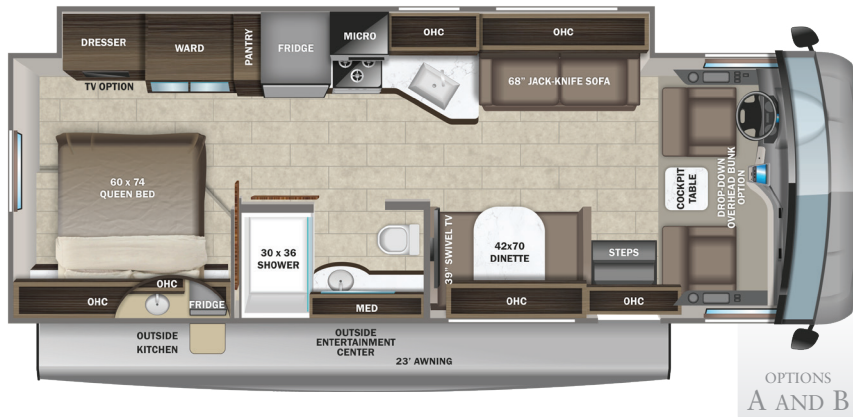
OPTION A

29F




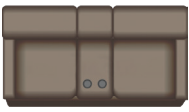
OPTION A

29S



OPTIONS A AND B

— OPTIONS —

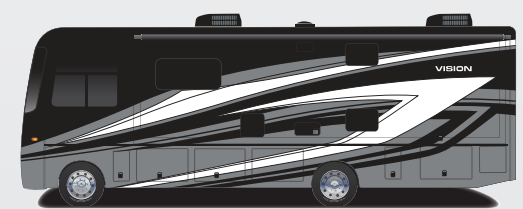
A  B 

12 cu. ft. Fridge Option Theater Sofa Option

EXTERIOR SELECTIONS



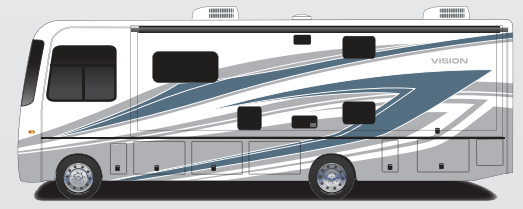
Standard Graphics



Tannerite Full-Body Paint



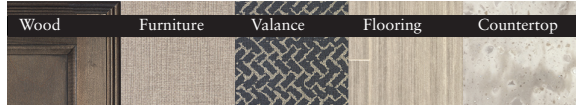
Dolomite Full-Body Paint



Basanite Full-Body Paint

INTERIOR DÉCOR

Brighton



Modern Farmhouse



CUSTOMER VALUE PACKAGE

E-Z DRIVE™: Computer-balanced driveshaft, Bilstein® steering stabilizer, jounce bumpers, heavy-duty front and rear stabilizer bars, SACHS shocks
 One-piece, seamless, crowned fiberglass roof
 Exterior entertainment center with outside speakers and LED HD Smart TV mounted on swivel bracket
 Electric patio awning with LED lights
 Slideout awning(s)
 1,000W inverter
 Sony® infotainment center with Apple CarPlay® and Android Auto™
 Backup and side-view cameras
 Removable driver/passenger cockpit table
 LED HD Smart TV in living area
 Blackout night roller shades

STANDARD EXTERIOR EQUIPMENT

Ford® F53 chassis
 GVWR - 18,000 lb.
 GCWR - 23,000 lb.
 7.3L V-8 350 HP engine with 468 ft.-lb. torque
 6-speed automatic TorqShift® transmission with overdrive and tow haul mode
 210 amp alternator
 G-rated highway tires-245/70R19.5
 Front and rear disc, 4-wheel anti-lock brakes
 5,000 lb. rear hitch receiver with dual connector and 7-pin plug
 12V chassis battery
 80 gal. fuel tank
 Onan® Marquis Gold Genset 5,500W generator
 Transfer switch with reverse polarity protection
 50 amp electrical service
 (2) 6V AGM (220ah) house batteries on slideout tray
 190W solar panel with dual controller
 Heated holding tanks (12V pads)
 15,000 BTU A/C unit with heat pump and second 13,500 BTU A/C unit
 Auto-ignition ducted furnace - 30,000 BTU
 6 gal. gas/electric DSI auto-ignition water heater
 16.5 gal. propane tank (56 lb.)
 LP quick-connect hookup
 Exterior utility center
 Winterization drain system
 Black tank flush

Outside shower
 12V demand water pump
 Water filtration system
 TuffShell™ vacuum-bond laminated roof, floor and sidewalls
 Bead-foam insulation (R-24 max roof, R-9 max floor, R-8 max walls)
 One-piece, seamless fiberglass front cap with partial paint
 Fiberglass exterior walls with vinyl graphics
 Automatic hydraulic leveling jacks
 Frameless windows
 Entrance door with industry's largest travel-view window
 Electric-powered entrance steps
 Lockable pass-through storage compartments with metal slam latches
 4 in. tube bumper with sewer hose storage
 Roof ladder
 Third brake light

STANDARD INTERIOR EQUIPMENT

Power front privacy shade with manual side privacy shades
 120 in. panoramic windshield
 Swivel driver and passenger seats
 6-way power driver seat
 Soft-touch, vinyl-wrapped automotive dash
 A/C and cruise control
 Tilt steering wheel
 Auxiliary start
 84 in. interior ceiling height
 High-intensity recessed LED ceiling lights
 LED-lit hardwood fascia
 Hardwood cabinet doors and drawer fronts
 Ball-bearing drawer guides
 Entegra-exclusive, easy-operation legless dinette table
 Prep for satellite dish
 Cable TV hookup with RG-6 coax
 Winegard 2.0 Wi-Fi/4G antenna
 Furrion® all-in-one cooktop and oven
 Residential-size microwave
 Large, recessed, stainless steel kitchen sink with cover
 LED-lit countertops
 Flip-up countertop extension (select models)
 Decorative kitchen backsplash
 Pop-up charging station in kitchen with 110V outlets and USB ports
 Shower with decorative surround, glass door, skylight and light
 Recessed stainless steel bathroom sink

Porcelain toilet with foot flush
 Powered roof vent in bathroom with wall switch
 Walk-around, queen-size bed with bedspread and nightstands (king size in 27A)
 USB port and wireless charging in nightstands
 Under-bed storage (select models)
 Bedroom TV prep
 Large wardrobes
 Bunks with industry-exclusive 300 lb. capacity each (29F)
 Wall-mounted tablet holder in each bunk (29F)
 2-point lap safety belts in all designated seating locations
 Smoke alarm
 Carbon monoxide detector

OPTIONS

Drop-down overhead bunk in cab area with 750 lb. capacity
 12 cu. ft. gas/electric refrigerator
 Theater seating (29S)
 LED HD Smart TV in bedroom

WARRANTY



NO ONE OFFERS A BETTER WARRANTY

At Entegra Coach, we build our RVs to handle every adventure, then back them with our industry-leading 2+3 limited warranty. Our 2-year limited warranty has you covered for 2 camping seasons. That's 730 days. In addition, our 3-year structural limited warranty has you covered for 3 camping seasons or 1,095 days. You won't find a better limited warranty in the business, because the only strings we attach are those that deliver the ultimate in reliability. For a copy of our 2-year limited + 3-year structural limited warranty with complete terms and conditions, please contact your local Entegra Coach dealer.

Floorplan	GVWR (lbs.)	GCWR (lbs.)	Wheel Base	Overall Length	Exterior Height w/ A/C & Satellite	Exterior Width	Interior Height	Fresh Water Capacity (gal.)	Grey Waste Water Capacity (gal.)	Black Waste Water Capacity (gal.)
27A	18,000	23,000	190	29' 11"	12' 5"	101	84	72	50	49
29F	18,000	23,000	190	32' 2"	12' 5"	101	84	72	40	49
29S	18,000	23,000	190	31' 4"	12' 5"	101	84	72	40/9	50

It is important for your safety and enjoyment that you are aware of the weights and tow ratings of the RV you select. Consult a competent advisor for questions or advice. Whether you are new to RVing or a veteran, get a feel for the performance of your RV before heading out on the roadways. When you tow a vehicle with your RV, you must drive differently than when you drive a single vehicle. Practice hooking up, driving, backing up and braking in a safe environment or seek out professional instruction. Jayco affixes a weight label to each RV which lists weight information for that vehicle. Refer to that label to verify the vehicle will meet your requirements. Gross Vehicle Weight Rating (GVWR): The maximum permissible weight of the motorhome, including the Unloaded Vehicle Weight (UVW) plus passengers, personal items, all cargo, fluids, options and dealer-installed accessories. The GVWR is equal to or greater than the sum of the UVW and the Cargo Carrying Capacity. Gross Combined Weight Rating (GCWR): The maximum allowable combined weight of the motorhome used as a tow vehicle and the attached towed vehicle.

Colton RV
 3122 Niagara Falls Blvd
 North Tonawanda, NY 14120
 (716) 694-0188
 www.ColtonRV.com

Colton RV
 3443 Southwestern Blvd.
 Orchard Park, NY 14127
 (716) 957-3250
 www.Coltonrv.com



Part of Jayco Family of Companies

Entegra Coach, Inc., P.O. Box 460, Middlebury, IN 46540, www.entegracoach.com. See dealer for further information and prices. All information in this brochure is the latest available at the time of publication approval. Entegra Coach reserves the right to make changes and to discontinue models without notice or obligation. Photos in this brochure may show optional equipment and props for photography purposes. RVs built for sale in Canada may differ to conform to Canadian codes. ©2022 Entegra Coach, Inc. Printed in U.S.A. 2032564.2023



entegracoach.com/vision