

FOREST RIVER PRESENTS

# SUNSEEKER



SUNSEEKER

# CONSTRUCTION

## MULTI-LAYERED LAMINATED ROOF SYSTEM

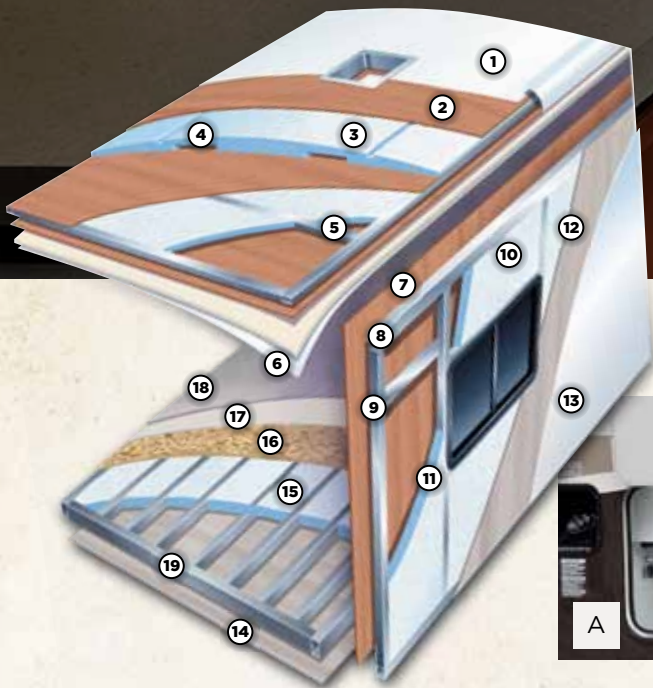
1. Crowned Fiberglass Roof
2. Luan decking
3. Block Foam Insulation
4. Dual A/C Ducts
5. 1.5" Tubular Aluminum Framing
6. Interior Ceiling Material

## 2-INCH VACUUM-BOND LAMINATED SIDEWALLS

7. Decorative Interior wall Board
8. 1.5" Tubular Aluminum Framing
9. EGS Metal Backers
10. Block Foam Insulation
11. Openings framed in Aluminum
12. SuperLite Composite
13. Smooth gelcoat fiberglass exterior

## VACUUM-BOND LAMINATED FLOOR SYSTEM

14. Fiberglass Bottom Board
15. Block Foam Insulation
16. Seamless Floor Decking
17. Beauflor Flooring (In some areas)
18. Carpet with Pad (In some areas)
19. 1.5" Aluminum Framing







**3010DS**

FIELDSTONE WITH CHERRY

## SUNSEEKER FEATURES

**A.** All Sunseekers feature heated/enclosed holding tanks and utility station. Your tanks stay warm with forced furnace heat and your dump area remains free from road debris.

**B.** Sunseeker's unique split level design gives you maximum headroom in the living area, while still offering pass-through storage on every floorplan (3100SS shown).

**C.** The Sunseeker offers an optional back-up

camera with 7" color monitor. Putting your monitor in the rear-view mirror allows you to keep your eyes on the road ahead. The separate monitor also allows you to use your radio or GPS while still using your camera.

**D.** All Sunseeker's feature a 7" touch-screen radio. The radio offers AM/FM, CD and DVD playback, USB, Aux, weatherband and Bluetooth standard. The radio also offers the option of an iPod connector and in dash GPS.



D



The new 2860DS features a standard outside kitchen. The kitchen offers a refrigerator, sink, 26" TV, storage and a portable exterior grill with quick LP connect.



All Sunseekers are available with an Entertainment Center in place of the overhead bunk. The 32" TV, like any other TV found in a Sunseeker, is 12 volt allowing your passengers to watch TV going down the road without having to run your generator.



12v TVs



**3170DS** | SPICE WITH CHERRY WOOD

## SUNSEEKER FEATURES

**A.** Why sacrifice a good night's sleep in your home away from home. Our optional Serta mattress will make counting sheep a thing of the past.

**B. & C.** KIDS ZONE. The 3170DS floor plan offers our innovative "Kids Zone". The bottom bunk doubles as a sofa making it the perfect area for kids to hang out. Featuring a 19" 12v

TV, DVD player and connections for gaming systems your kids will have no trouble being entertained on those rainy afternoons.

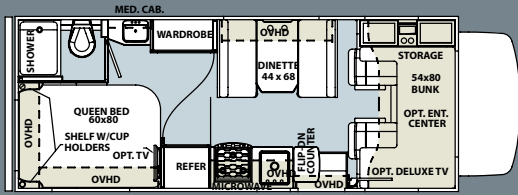
**D.** If you like to mix business with pleasure the 3170DS can still be the perfect option. The optional desk and larger wardrobe can easily replace the bunks and make it the perfect coach for the "professional" camper.



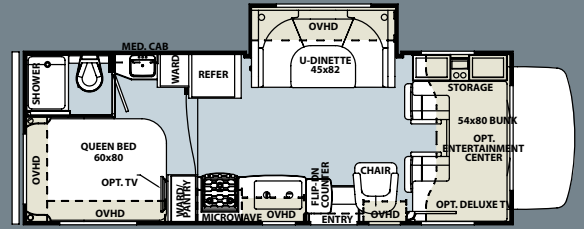


SUNSEEKER

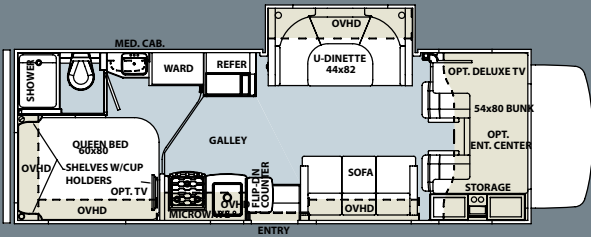
FLOORPLANS, SPECIFICATIONS AND FABRICS



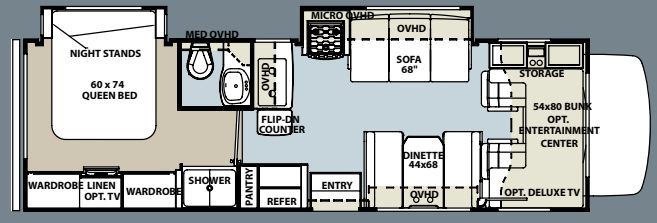
2300



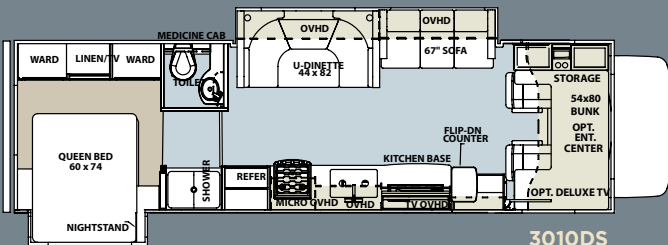
2450S



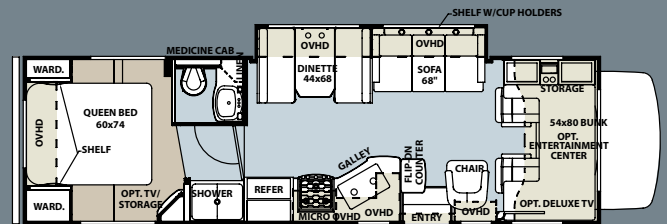
2690S



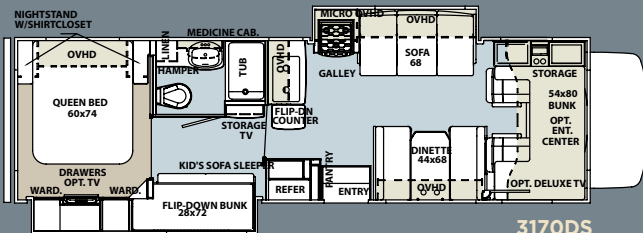
2860DS



3010DS



3100SS



3170DS



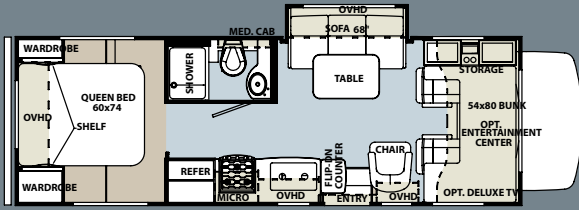
LATTE FULL BODY PAINT

FORD CHASSIS

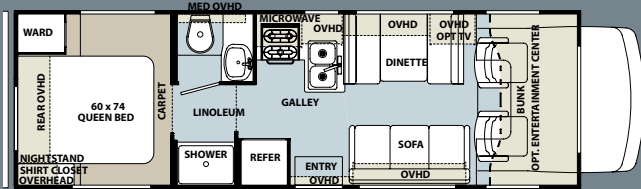
CHEVY CHASSIS

	2300	2450S	2650S	2609S	2860DS	2900	3010DS	3100SS	3120DS	3170DS	2300	2450S	2860DS	2900
WHEELBASE	158"	182"	193"	202"	202"	188"	220"	220"	220"	220"	158"	182"	202"	188"
GVWR	12500	14500	14500	14500	14500	14500	14500	14500	14500	14500	12500	14500	14500	14500
UVW	9950	11150	11100	11260	12100	10990	12400	11900	12200	12500	9950	11150	12100	10990
GCWR	18500	22000	22000	22000	22000	22000	22000	22000	22000	22000	18500	22000	22000	22000
NCC	2550	3350	3400	3240	2400	3510	2100	2600	2300	2000	2550	3350	2400	3510
FUEL CAP.(GAL)	55	55	55	55	55	55	55	55	55	55	55	55	55	55
HITCH RATING	5k/500	5k/500	5k/500	5k/500	5k/500	5k/500	5k/500	5k/500	5k/500	5k/500	5k/500	5k/500	5k/500	5k/500
TOTAL LENGTH	24'-6"	26'-11"	28'-4"	28'-1"	30'-9"	29'-9"	32'-3"	31'-11"	31'-11"	32'-3"	25'	27'-5"	31'-5"	30'-5"

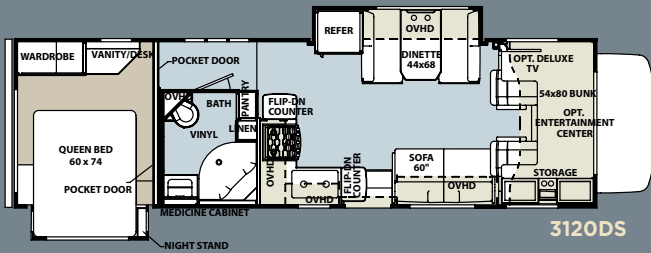
## INTERIOR OPTIONS



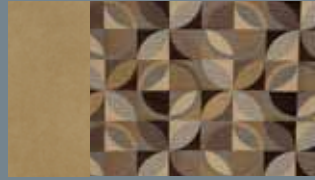
2650S



2900



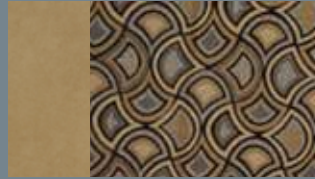
3120DS



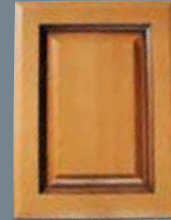
SLATE



SPICE



FIELDSTONE

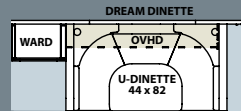


GLAZED MAPLE

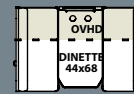


GLAZED CHERRY

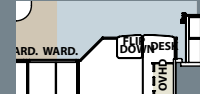
## FLOORPLAN OPTIONS



2300 U-Shaped Dinette Option



2650S  
Dinette Option



3170DS Desk Option



AUBURN FULL BODY PAINT



All Sunseekers are "Certified Green" by TRA Certification. Green manufacturing means a cleaner/greener environment.

## CAPACITIES & DIMENSIONS

	2300	2450S	2650S	2609S	2860DS	2900	3010DS	3100SS	3120DS	3170DS
EXTERIOR HEIGHT W/ A/C	11'-3"	11'-3"	11'-3"	11'-3"	11'-3"	11'-3"	11'-3"	11'-3"	11'-3"	11'-3"
EXTERIOR WIDTH	101"	101"	101"	101"	101"	101"	101"	101"	101"	101"
INTERIOR WIDTH	95.5"	95.5"	95.5"	95.5"	95.5"	95.5"	95.5"	95.5"	95.5"	95.5"
INTERIOR HEIGHT	84"/77"	84"/77"	84"/77"	84"/77"	84"/77"	84"/77"	84"/77"	84"/77"	84"/77"	84"/77"
FRESH WATER (GAL)	44	44	44	44	44	44	44	44	44	44
GREY WATER (GAL)	39	39	28	39	39	39	39	39	39	39
BLACK WATER (GAL)	39	39	28	39	39	39	39	39	39	39
L.P. CAPACITY (GAL)	9.8	9.8	9.8	9.8	9.8	9.8	9.8	9.8	9.8	9.8
AWNING LENGTH	15'-6"	18'	12'-6"	14'	16'	14'	15'-6"	16'	16'	11'
WATER HEATER (GAL)	6	6	6	6	6	6	6	6	6	6

# SUNSEEKER Standards & Options

## WARRANTY: STANDARD FEATURES

- 12 Months/12,000 miles basic limited warranty
- Bumper-to-bumper 3 years / 36,000 mile limited chassis warranty
- 5 years/60,000 mile limited powertrain warranty (Ford)
- 5 years/100,000 limited powertrain warranty (Chevy)

## SYSTEMS: STANDARD FEATURES

- Battery disconnect
- Water heater bypass kit
- Deep cycle coach battery
- 30 amp, 12 volt distribution panel & 30' power cord
- 55 amp, 12 volt power converter
- Six gallon gas/electric electronic ignition DSI water heater
- 30,000 BTU electronic ignition furnace
- Remote emergency start
- Cable TV jack
- 13.5 K BTU ducted roof air conditioner
- 40G Guardian generator
- Generator auto transfer switch
- One year CoachNet service
- Firestone Ride-Rite Air Assist Suspension

## OPTIONAL FEATURES

- Arctic package
- 4.0 KW Onan Microquiet generator
- Water filtration system
- 2nd auxiliary deep cycle coach battery
- 15K BTU air conditioner with heat pump

## EXTERIOR: STANDARD FEATURES

- 2" laminated Gel Coat sidewalls, vacuum bonded with aluminum frame structure, steel backers & block foam insulation
- A & E electric awning
- A & E slide out awnings
- Fiberglass roof
- Stainless steel wheel liners
- Lockable rotocast pass-through storage compartments
- Patio light
- Entry door with screen door & dead bolt door lock
- Aluminum running boards
- All radius style exterior doors
- Entry assist handle
- Heated and enclosed holding tanks
- Heated and enclosed "Easy-Dump" valve dump stations

- 110 volt, GFI protected exterior receptacle
- Tinted sliding windows
- Deluxe break-away mirrors
- 5,000 lb. tow hitch with 7-pin connector
- Spare tire
- Roof ladder
- Integrated entry step
- "Easy-Access" battery compartment in entry step
- Outside shower

## OPTIONAL FEATURES

- Bigfoot hydraulic automatic leveling jacks
- Fiberglass front cap
- Full body paint
- Deluxe heated/remote exterior mirrors
- Sideview cameras (must option Back-up camera)
- Front cab bunk window (N/A w/ Fiberglass Cap)

## CAB AREA: STANDARD FEATURES

- 7" Touch-screen AM/FM radio w/ CD, DVD USB, aux, weatherband and bluetooth
- Cab area privacy curtains
- Dual 12 volt power points
- Cruise control
- Power windows and door locks
- Keyless entry (Ford chassis only)

## OPTIONAL FEATURES

- Color back-up camera with monitor
- Ultra-leather driver/passenger seats
- GPS navigation system & iPod dock
- Woodgrain dash

## GALLEY AREA: STANDARD FEATURES

- High-neck faucet
- Three burner range with oven
- 6 cubic foot refrigerator/freezer
- Range hood with fan and light
- Residential-style drawer construction with solid wood fronts and ball-bearing drawer guides
- Microwave oven (N/A 3120DS)
- Flip-up countertop extension
- Sink cover

## OPTIONAL FEATURES

- Wood refrigerator panels
- Convection microwave IPO oven (Std. 3120DS)

## BATHROOM AREA: STANDARD FEATURES

- Large medicine cabinet with mirrored cabinet doors
- Deep sink with dual control faucet
- Porcelain toilet
- Frosted glass shower door
- Bath amenity package (towel bar, tissue, toothbrush & soap holder)
- Electric roof vent fan
- Wall mount mirror
- Molded ABS shower pan & surround
- Shower head with flexible hose extension
- Shower skylight

## BEDROOM AREA: STANDARD FEATURES

- Innerspring mattress
- Bedspread with pillow shams
- TV area with receptacle & cable TV jack
- Adjustable reading lights
- Pleated night shades
- Bi-fold privacy door

## OPTIONAL FEATURES

- Upgraded Serta Eurotop mattress
- 19" Flat panel 12 volt TV
- Desk and wardrobe IPO bunk beds (3170DS)

## LIVING ROOM AREA: STANDARD FEATURES

- Raised panel cherry or maple cabinetry throughout
- Rubbed bronze handles
- Dream dinette
- 2-way sofa with convertible sleeping & removable arms
- Pleated night shades
- 7 foot ceiling height

## OPTIONAL FEATURES

- Cab over entertainment center with 12 volt 32" TV
- 22" flat panel 12 volt side TV
- 5.1 Surround sound
- Fantastic fan
- U-shaped dinette IPO standard dinette (2300)
- Dinette IPO sofa (2650S)



## PRE-DELIVERY INSPECTION FACILITY

20,000 square feet of quality assurance. The bare essentials for a premium product. This state-of-the-art facility gives immediate daily feedback to production for quality assurance in every unit built.



**Forest River, Inc. encourages our customers to purchase their Forest River products from a local dealership whenever possible for the following reasons:**

- 1) Forest River, Inc. dealers are independently owned and operated businesses so priority service and scheduling is at their discretion and is often provided to customers that purchased their unit at that dealership.
- 2) Purchasing locally allows customers to establish meaningful relationships with a dealer, enhancing the RV experience through assistance with product questions, user tips or RV regulations for your state or country, and much more!
- 3) Canadian customers must meet requirements to bring an RV purchased out of the country to their home. These requirements may involve additional inspections and certifications, taxes and fees. Your local Canadian Dealer is a professional at meeting these requirements.
- 4) Scheduling timely warranty repairs and adjustments through a local dealership provides far greater flexibility and convenience to you, the customer!

It is the goal of Forest River, Inc. that all of our RV owners fully enjoy the RV experience and that customer satisfaction meets or exceeds their expectations!



**Learn More**  
Scan this barcode using a QR Reader on your smart phone to learn more about Forest River.



A Berkshire Hathaway company.

914 C.R. 1 Elkhart, IN 46514 574.262.2212 800.445.2825  
www.forestriverinc.com/sunseeker

All specifications contained herein are based on the latest product information at time of printing. Forest River reserves the right to make changes in colors, materials, equipment and specifications at any time without notice and assumes no responsibility for any errors in this brochure. LITHO: U.S.A. FOR 0940

Your Sunseeker Dealer

**Colton RV**  
3122 Niagara Falls Blvd.  
North Tonawanda, NY 14120  
(716) 694-0188  
(800) 628-4889  
www.ColtonRV.com