

FREELANDER
By Coachmen

FREELANDER

By Coachmen



 **Coachmen**
Leader to the Great Outdoors.



27QB WITH SEA HAZE DÉCOR

FREELANDER EXTERIOR

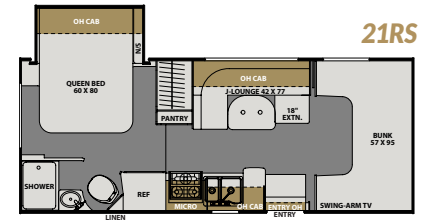


27QB WITH SEA HAZE DÉCOR

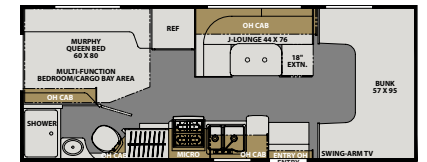
FREELANDER AND FREELANDER PREMIER KEY FEATURES

- Superior Construction**
 - "Certified Green" Product
 - 2" Thick Sidewall Construction with Azdel "SuperLite" Substrate and 100% Welded Aluminum Framing
 - CrossFlex Reinforced Roof Material
 - QVM Certified Chassis Modifications
- Camping Enhancements**
 - Full Length Patio Awning and LED Patio Light Bar
 - LP Quick-Connect Line
 - Solar Port Connection
 - Warehouse Storage Exterior Compartment
- Comfort**
 - Residential Bed Sizes
 - Large Cab-Over Area
 - Oversize Dinettes
- CRV Comfort Ride (23FS, 30BH, and All Premier Models)**
 - Bilstein Front Shocks (Premier Models only)
 - Firestone Ride-Rite Adjustable Rear Air Bags
 - Stability Control
 - Dynamically Balanced Driveshaft System
 - Heavy Duty Front & Rear Stabilizer Bars
- Improved Mechanical Systems**
 - Large Fresh Water Tank
 - Even-Cool Ducting System (on select models)
 - 2nd Rooftop A/C Pre-Wire (on select models)

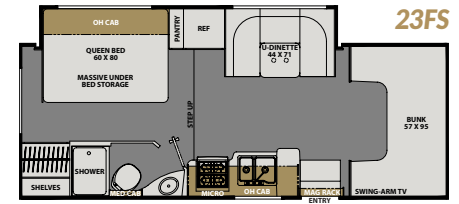
FREELANDER MODEL



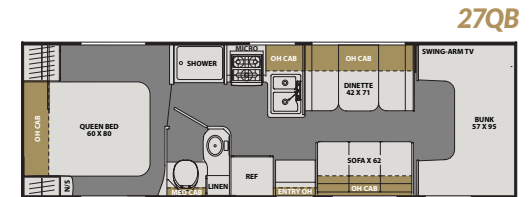
21RS



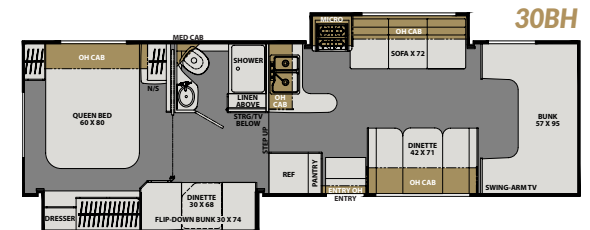
22XG



23FS



27QB

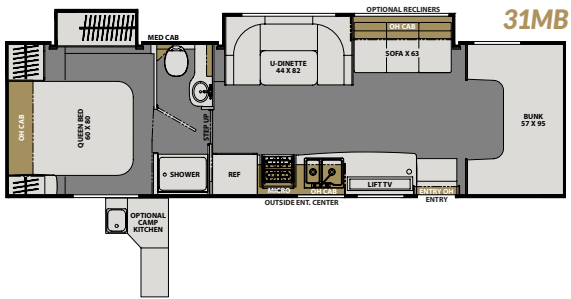
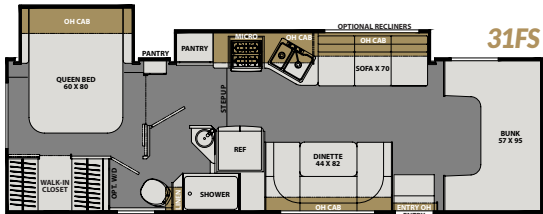
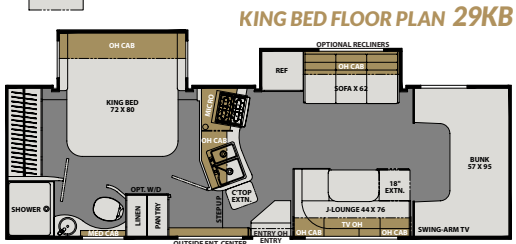
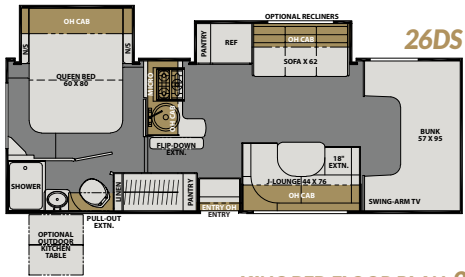


30BH

FREELANDER MODEL SPECIFICATIONS

MODEL	21RS	22XG	23FS	27QB	30BH
Chassis	2021 E350 FORD	2021 E350 FORD	2021 E350 FORD	2021 E350 FORD	2021 E450 FORD
Engine	V8-7.3L	V8-7.3L	V8-7.3L	V8-7.3L	V8-7.3L
Horse Power	350	350	350	350	350
Torque	468	468	468	468	468
Wheel Base	158"	158"	176"	190"	223"
GVWR (lbs.)	12,500	12,500	12,500	12,500	14,500
GCWR (lbs.)	18,500	18,500	18,500	18,500	22,000
UVW (approx. lbs.)	9,830	9,400 est.	10,800	10,294	12,150
CCC (approx. lbs.)	2,670	3,100 est.	1,700	2,206	2,350
GAWR Front (lbs.)	5,000	5,000	5,000	5,000	5,000
GAWR Rear (lbs.)	8,500	8,500	8,500	8,500	9,600
Interior Height	6' 11"	6' 11"	6' 11"	6' 11"	6' 11"
Exterior Width	8' 4"	8' 4"	8' 4"	8' 4"	8' 4"
Exterior Height (with A/C)	10' 11"	10' 11"	10' 11"	10' 11"	10' 11"
Ford Exterior Length (with Bumper)	24' 3"	24' 3"	26' 0"	29' 6"	32' 11"
Tow Capacity (lbs.)	5,000	5,000	5,000	5,000	7,500
Fuel Capacity (gal.)	55	55	55	55	55
LP Capacity (lbs.)	68	68	68	68	68
Fresh Water Capacity (gal.)	50	41	43	40	50
Water Heater Capacity (gal.)	6	6	6	6	6
Grey Tank Capacity (gal.)	28	28	31	31	34
Black Tank Capacity (gal.)	31	31	31	31	29
Exterior Storage (cu. ft.)	57	38	40	69	48
Awning Length	15'	15'	17'	20'	11'

FREELANDER PREMIER MODEL



FREELANDER PREMIER EXTERIOR OPTIONS



STANDARD GRAPHICS



PARTIAL BODY PAINT

FREELANDER PREMIER MODEL SPECIFICATIONS

MODEL	26DS	29KB	31FS	31MB
Chassis	2021 E450 FORD	2021 E450 FORD	2021 E450 FORD	2021 E450 FORD
Engine	V8-7.3L	V8-7.3L	V8-7.3L	V8-7.3L
Horse Power	350	350	350	350
Torque	468	468	468	468
Wheel Base	190"	202"	220"	223"
GVWR (lbs.)	14,500	14,500	14,500	14,500
GCWR (lbs.)	22,000	22,000	22,000	22,000
UVW (approx. lbs.)	11,330	11,800	12,350	11,650
CCC (approx. lbs.)	3,170	2,700	2,150	2,850
GAWR Front (lbs.)	5,000	5,000	5,000	5,000
GAWR Rear (lbs.)	9,600	9,600	9,600	9,600
Interior Height	6'11"	6'11"	6'11"	6'11"
Exterior Width	8'4"	8'4"	8'4"	8'4"
Exterior Height (with A/C)	10'11"	10'11"	10'11"	10'11"
Ford Exterior Length (with Bumper)	27'5"	30'5"	31'10"	32'11"
Tow Capacity (lbs.)	7,500	7,500	7,500	7,500
Fuel Capacity (gal.)	55	55	55	55
LP Capacity (lbs.)	68	68	68	68
Fresh Water Capacity (gal.)	50	48	50	50
Water Heater Capacity (gal.)	6	6	6	6
Grey Tank Capacity (gal.)	31	34	32	32
Black Tank Capacity (gal.)	31	31	31	29
Exterior Storage (cu. ft.)	60	80	70	100
Awning Length	18'	21'	19'	21'

GVWR (Gross Vehicle Weight Rating) is the maximum permissible weight of the unit when fully loaded. It includes all weights, inclusive of all fluids, occupants, cargo, optional equipment and accessories. For safety and product performance do NOT exceed the GVWR.

GCWR (Gross Combined Weight Rating) is the maximum permissible loaded weight of your motor home and any towed trailer or towed vehicle. Actual GCWR of this vehicle may be limited by the sum of the GVWR and the installed hitch receiver maximum capacity rating; see hitch rating label for detail.

GAWR (Gross Axle Weight Rating) is the maximum permissible weight, including cargo, fluids, optional equipment and accessories that can be safely supported by each axle.

UVW (Unloaded Vehicle Weight)* is the typical weight of the unit as manufactured at the factory. It includes all weight at the unit's axle(s), including full fuel, all fluids and LP Gas. The UVW does not include cargo, fresh potable water, additional optional equipment or dealer installed accessories.

*Estimated Average based on standard build optional equipment.

CCC (Cargo Carrying Capacity)** is the amount of weight available for fresh potable water, cargo, passengers, additional optional equipment and accessories. CCC is equal to GVWR minus UVW. Available CCC should accommodate fresh potable water (8.3 lbs per gallon). Before filling the fresh water tank, empty the black and gray tanks to provide for more cargo capacity.

** Estimated average based on standard build optional equipment

Each Coachmen motorhome is weighed at the manufacturing facility prior to shipping. A label identifying the unloaded vehicle weight of the actual unit and the cargo carrying capacity is applied to every Coachmen motorhome prior to leaving our facilities.

The load capacity of your unit is designated by weight, not by volume, so you cannot necessarily use all available space when loading your unit.

Actual towing capacity is dependent upon your particular loading and towing circumstances, which includes the GVWR, GAWR and GCWR as well as adequate trailer capacity. Please refer to the Operator's Manual of your vehicle for further towing information.



FREELANDER

By Coachmen

EXPERIENCE COACHMEN RV!
visit
**CoachmenRV.com/
Freelander**

for more photos,
virtual tours, videos and the
latest model standards
and options.

CUSTOMER SATISFACTION



www.ForestRiverBuyLocal.com



FREE MEMBERSHIP
www.coachmenowners.com

YOUR FREELANDER DEALER

Colton RV
North Tonawanda, NY 14120
(716) 694-0188
(800) 628-4889
www.ColtonRV.com

Colton RV
Orchard Park, NY 14127
(716) 957-3250
(800) 628-4889
www.Coltonrv.com



Learn More
Scan this barcode using
a QR Reader on your
smart phone to learn
more about Forest River.



A Berkshire Hathaway company.

All information contained in this brochure is believed to be accurate at the time of publication. However, during the model year, it may be necessary to make revisions and Coachmen reserves the right to make all such changes without notice, including prices, colors, materials, equipment and specifications as well as the addition of new models and the discontinuance of models shown in this brochure. Therefore, please consult with your Coachmen dealer and confirm the existence of any materials, design or specifications that are material to your purchase decision. 02/21

**24/7 EMERGENCY
ROADSIDE ASSISTANCE
WITH VEHICLE PURCHASE***

TOWING
JUMP-STARTS
TIRE CHANGES
FLUID DELIVERY
LOCKOUT
SERVICE

WINCH-OUT
MOBILE MECHANIC
TECHNICAL
SUPPORT
DEALER LOCATOR
SERVICES



*VALID FOR 1 YEAR FROM DATE OF PURCHASE



Coachmen

Leader to the Great Outdoors.

Coachmen RV, a Division of Forest River, Inc.,
A Berkshire Hathaway Company

423 N. Main St., P.O. Box 30, Middlebury, IN 46540

To learn more about Coachmen RV and our products and see how
Coachmen is making the easy life easier, visit www.coachmenrv.com

©Copyright 2021 Coachmen RV a Division of Forest River Inc. - All Rights Reserved.