

# Montana

## MOUNTAINEER

*by Keystone*



QUALITY, VALUE AND STYLE  
BY THE PEOPLE WHO KNOW RVING



Montana 02  
MOUNTAINEER

MOUNTAINEER 375FLF IN GREYSTONE DECOR



Montana Mountaineer's unique appeal results from listening closely to our customers and implementing their preferences for contemporary residential design and comfort. Mountaineer's quality, value and style have become legendary for those customers that want the best while pursuing an RV lifestyle. With seven new or re-designed floor plans, the Mountaineer is ideal for couples or families on the go.

The 375 FLF front living room offers unparalleled spaciousness with the innovative arched roof. Leading the way is opposing residential hide-a-bed sofas and a lightweight euro recliner with a built in foot rest. Pull out the hide-a-beds and close the accordion curtain to instantly convert this clever front living room into a private guest room.

Over 25 cabinet doors and drawers in the 375 FLF living area and kitchen provide plenty of storage. Plus, kitchen countertop space is easily expanded with the flip up countertop extension, flush mount sink covers and flush mount range covers.

MOUNTAINEER 375FLF IN GREYSTONE DECOR

03 Montana  
MOUNTAINEER





Montana 04

MOUNTAINEER 356TBF IN MIDNIGHT DECOR



The 356 TBF is designed with a spacious, well-planned bunk room that will accommodate family and friends on long leisurely vacations. Five slide-outs, ample storage and an extra half bathroom make life on the road a breeze. Feeding a crowd is simple with the island kitchen, optional 12 cubic foot 4 door refrigerator and fully equipped outside kitchen.

The optional hide-a-bed sofa with fold up bunk above is the most popular configuration in Mountaineer bunk house floor plans. HD flat panel TVs in the bunk room, living area and bedroom are standard while the optional electric fireplace adds a cozy ambiance and provides an auxiliary heat source without consuming valuable LP.



05 Montana  
MOUNTAINEER



MOUNTAINEER 356TBF IN MIDNIGHT DECOR





Montana 06

MOUNTAINEER 310RET IN MIDNIGHT DECOR



The new 310 RET offers storage solutions you would not think possible in a triple slide fifth wheel under 35' long thanks to opposing full wall slide-outs and a free standing kitchen island. The stainless steel sink is mounted under the counter to maximize countertop space while the matching faucet has a pull out sprayer.

The residential 30" wide microwave has an integrated range hood and is mounted at a very convenient height. With five electrical outlets in the kitchen alone, it is easy to locate a spot for your favorite kitchen appliances. The 8 cubic foot 2 door refrigerator is standard, but the 12 cubic foot 4 door refrigerator is optional on the 310 RET.

The huge HD flat panel television is positioned for optimal viewing angles from every seat in the 310 RET living area and kitchen. The Bluetooth Jensen entertainment system is an AM/FM CD/DVD MP3 player that features wireless link technology allowing control from Bluetooth enabled smart phones to stream music and even place or receive calls through the system, which includes 4 speakers in the living area, 2 speakers in the bedroom and 2 exterior speakers.

The computer work station with optional desk chair provides the perfect place to catch up on email or surf the web. Kick back and relax on the plush recliners or optional theater seat. The hide-a-bed sofa provides a comfortable seating surface that is very easy to convert into an extra bed for guests. The cushioned Beauflor® vinyl flooring with herringbone pattern woodgrain is one of the most durable RV flooring choices.

MOUNTAINEER 310RET IN MIDNIGHT DECOR



07 Montana  
MOUNTAINEER

## STAY IN TOUCH

Montana Mountaineer is always just a touch away. You'll find 360 virtual tours, location of your nearest dealer, photos, videos and all of the latest information about Montana Mountaineer on our easy to navigate website. Everything you need can be accessed anytime, day or night, from home or on the road. You can also find us on the Keystone RV facebook.





Montana 08  
MOUNTAINEER

MOUNTAINEER 295RKD IN COCOA DECOR





Gorgeous raised panel cabinet doors with Milano walnut stain add a level of luxury typically reserved for the most expensive motor homes. Beautiful and functional, Mountaineer cabinet doors have rubber expansion balls placed between the outer frame and raised panel to protect the doors from cracking in extreme climates. Plenty of windows and flush mounted LED lights create an exceptionally bright interior.

09 **Montana**  
MOUNTAINEER

MOUNTAINEER 295RKD IN COCOA DECOR





Montana 10

MOUNTAINEER BEDROOM



When nothing sounds better than a relaxing evening at home, look no further than the Montana Mountaineer bedroom with a queen or optional king sized bed, bedside night stands, reading lights and plenty of electrical outlets. The huge storage compartment under the bed provides over 16 cubic feet of extra storage. Every Montana Mountaineer is standard with an HD flat panel bedroom television.

The deep bedroom slide-out provides ample walk space at the foot of the bed while the arched roof provides up to 6' 8" interior ceiling height. Life on the road just got easier because the Montana Mountaineer front closet is now prepped for a side by side washer and dryer with each appliance on a separate circuit so both can operate at the same time.

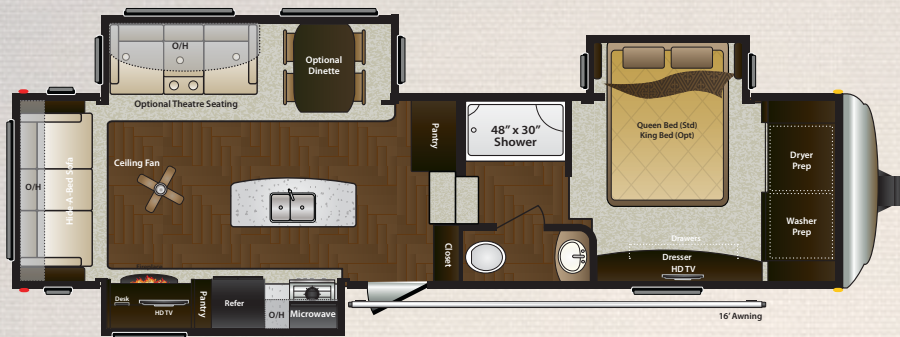
The Montana Mountaineer bathroom feels like home with the 48" long by 30" wide seamless fiberglass shower with molded seat and glass doors in 6 floor plans. The bathroom mirror is mounted flush against the wall, making it easier to lean over the sink when washing or shaving. The cabinet beside the bathroom sink provides convenient pass through access to the bedroom linen cabinet.

On your way out the door, grip the 3" interior wall and feel the sturdy construction. Montana Mountaineer bathroom doorways are well framed with no unnecessary gaps at the top of the door.

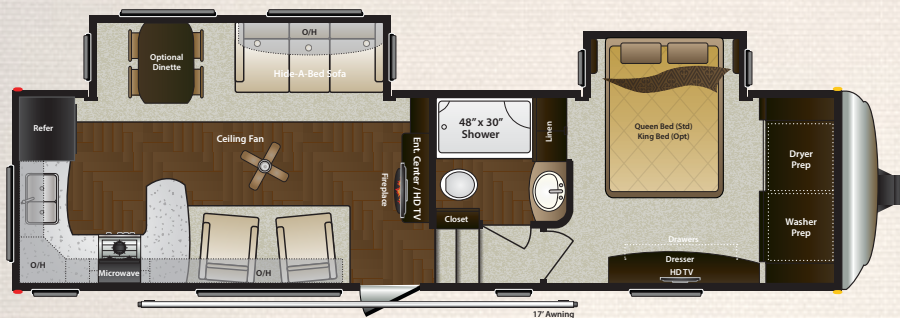
MOUNTAINEER BATHROOM



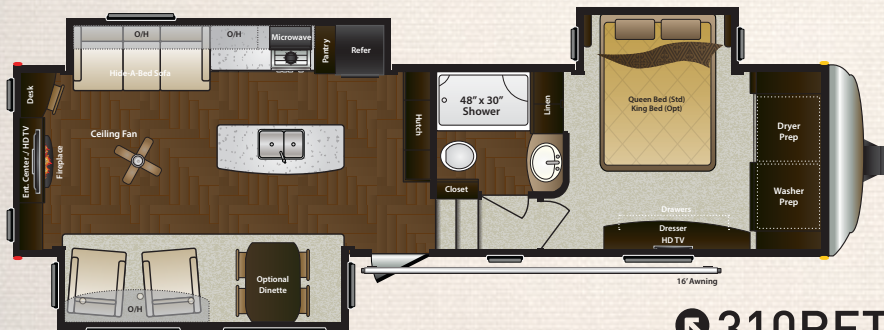
# FLOORPLANS



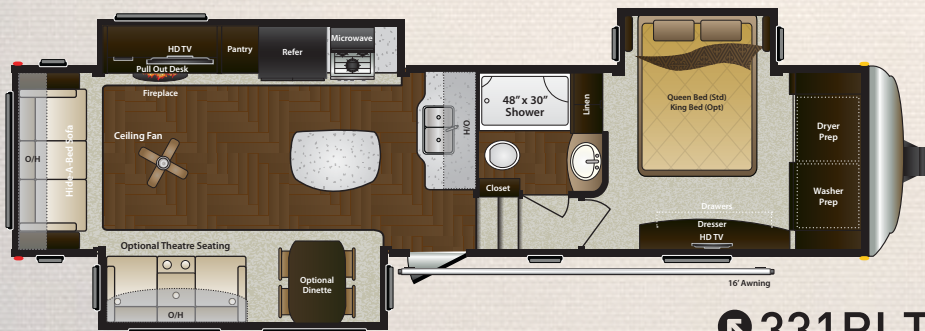
➡ 291RLT



➡ 295RKD



➡ 310RET



➡ 331RLT



# Montana MOUNTAINEER

MODEL	291RLT
SHIPPING WEIGHT	10990
CARRYING CAPACITY	3305
HITCH WEIGHT	2295
EXTERIOR LENGTH*	34' 8"
EXTERIOR HEIGHT	12' 9"
FRESH WATER	66
WASTE WATER	50
GRAY WATER	93
LPG CAPACITY LB.	60

MODEL	350DBQ
SHIPPING WEIGHT	TBD
CARRYING CAPACITY	TBD
HITCH WEIGHT	TBD
EXTERIOR LENGTH*	42' 0"
EXTERIOR HEIGHT	TBD
FRESH WATER	66
WASTE WATER	93
GRAY WATER	93
LPG CAPACITY LB.	60

DISCLAIMER: Product information is as accurate as possible as of the date of publication of this brochure. All features, floor plans, and specifications in this brochure are subject to change without notice. Please also consult Keystone's web site at [www.keystonerv.com](http://www.keystonerv.com) for more current product information and specifications. Tow Vehicle Disclaimer. CAUTION: Owners of Keystone recreational vehicles are solely responsible for the selection and proper use of tow vehicles. All customers should consult with a motor vehicle manufacturer or their dealer concerning the purchase and use of suitable tow vehicles for Keystone products.

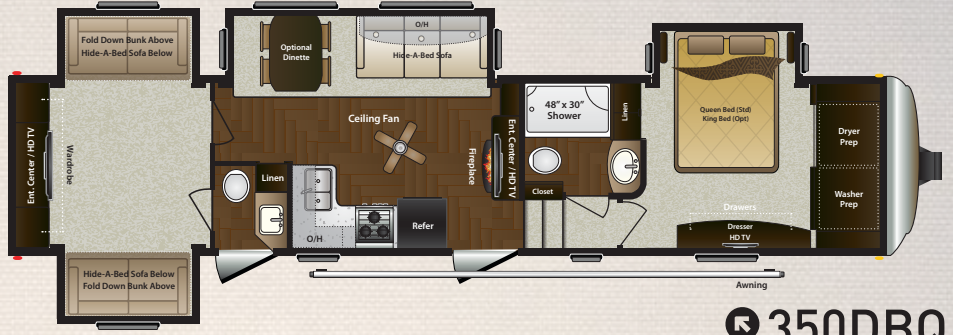


# Montana MOUNTAINEER

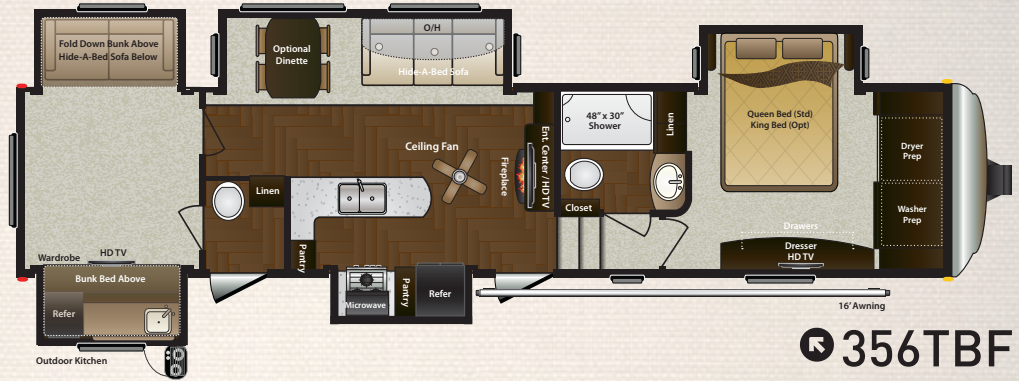
295RKD	310RET	331RLT
10263	11130	11405
4132	3165	2900
2395	2295	2305
34' 2"	34' 9"	36' 9"
12' 9"	12' 9"	12' 9"
64	64	64
50	50	50
93	93	93
60	60	60

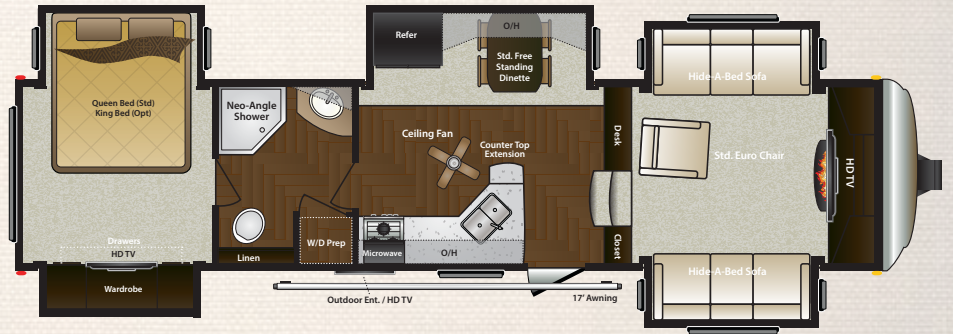
356TBF	375FLF
13224	11905
2626	3865
2350	2270
39' 10"	37' 10"
13' 4"	12' 9"
66	66
93	50
93	93
60	60



350DBQ



356TBF



375FLF

## BUY LOCALLY

PURCHASING YOUR RV LOCALLY

It's up to you where you purchase your new Montana Mountaineer, but may we suggest your local dealer? Not only does it help your local economy and provide jobs, but it will also give you an opportunity to develop a service relationship with someone that will come to know you and your coach. Congratulations on finding the best built, best equipped and best value in the industry. Happy travels!

Keystone disclaims any liability or damages suffered as a result of the selection, operation, use or misuse of a tow vehicle. KEYSTONE'S LIMITED WARRANTY DOES NOT COVER DAMAGE TO THE RECREATIONAL VEHICLE OR THE TOW VEHICLE AS A RESULT OF THE SELECTION, OPERATION, USE OR MISUSE OF THE TOW VEHICLE. \*Length is defined as the distance from the centerline of hitch pin/coupler to rear bumper of trailer. Add 6 inches for extended pin box. \*\* Add 6 inches for second A/C. 02/2014

● **LIVING AREA FEATURES**

- Hide-a-bed sofa (MM)
- Milano walnut stained cabinetry
- Decorative wood slide-out fascia (BL)
- Solid wood cabinet doors and drawer fronts (BL)
- Brushed nickel cabinet hardware
- Arched ceiling
- Flush mounted LED interior lights
- Brushed nickel decorative light fixtures
- Pleated night shades
- Contemporary window treatments
- Power vent fan in kitchen or living room
- Ceiling fan (MM)
- Cushioned Beauflor® vinyl flooring with herringbone pattern woodgrain (BL)
- 6' 6" Tall main slide-outs
- Overhead soffits with flush mounted LED lights where applicable
- Elegant crown molding above and below select cabinets

● **KITCHEN FEATURES**

- LG HI-MACS® solid surface kitchen countertops
- Stainless steel sink and kitchen faucet with integrated pull out sprayer (MM)
- LG HI-MACS® solid surface flush mount sink covers (BL)
- LG HI-MACS® solid surface flush mount range covers (MM)
- Stainless steel 30" over-the range microwave
- Stainless steel 22" oven with broiler (MM)
- High output range with automatic igniter (MM)
- 8 cubic foot 2 door refrigerator (MM)
- Full extension drawer guides (BL)
- Cabinet toe kicks (MM)

● **HOME ENTERTAINMENT**

- RG-6 Satellite prep (MM)
- HD Digital TV antenna with booster (MM)
- HD flat panel TV in living area (BL)
- HD flat panel TV in bedroom
- HD flat panel TV in bunk room (350, 356)
- 12v Bluetooth AM/FM CD/DVD MP3 player home entertainment system (MM)
- » 4 living area speakers
- » 2 bedroom speakers
- » 2 exterior speakers

● **BEDROOM FEATURES**

- Queen Bed (60" x 80") (MM)
- Fabric bedroom headboard (MM)
- (2) Bedside windows in bedroom slide-out (MM)
- Reading light over bed (MM)
- Bedroom closet prepped for side by side washer and dryer with separate 20amp circuits for each appliance (MM)

● **BATHROOM FEATURES**

- Seamless 48" x 30" fiberglass shower (n/a 375)
- Sky light over shower (MM)
- Deluxe porcelain toilet with foot flush (MM)
- 10 Gallon DSI gas/electric water heater (MM)
- Bathroom closet prepped for stackable washer and dryer with separate 20amp circuits for each appliance (375) (MM)

● **ELECTRICAL SYSTEMS**

- 50amp service with detachable cord (MM)
- 75amp converter (BL)

● **COOLING SYSTEM**

- 15,000 BTU air conditioner with quick cool (MM)
- Wire and frame for 2nd air conditioner (MM)

● **CONSTRUCTION**

- Welded, aluminum framed walls, floors and slide-outs
- 5" Arched roof rafters (MM)
- Glacier package with R-10 sidewalls, R-38 roof and R-21 floor insulation (BL)

● **TOWING**

- Max Turn front cap with Hitch Vision™ (BL)
- MOR/Ryde™ CRE 3000 Suspension
- 8-Lug 16" Aluminum Wheels
- Dexter™ E-Z lube axles with self adjusting brakes (MM)
- Undermount spare tire and carrier (MM)

● **EXTERIOR**

- Painted front cap with metallic finish (BL)
- Colored hi-gloss gel-coat sidewalls
- Automotive frameless windows
- 30" Wide entry door
- Fold away entry handle (MM)
- Rear roof ladder (MM)
- Enormous drop frame pass through storage compartment (BL)
- Insulated slam latch pass through storage compartment doors with gas struts (BL)
- Electric front jacks (MM)
- Electric rear stabilizer jacks (BL)
- Adjustable electric patio awning (BL)
- Central exterior water & convenience center (BL)
- Outside shower with quick connect hose
  - » Black tank flush
  - » Easy winterization kit
  - » Water heater bypass
  - » City water connection
  - » Power tank fill
  - » Enclosed low point drains
  - » Battery disconnect
  - » (2) RG-6 Satellite hook-ups
  - » Cable hook-up
  - » 12v light
- Dual patio scare lights (MM)

**MOUNTAINEER OPTIONS**

● **EXTERIOR OPTIONS**

- Dual pane frameless windows
- Slide awning package
- 6-Point hydraulic auto leveling system

● **INTERIOR OPTIONS**

- King bed
- Theater seating in place of recliners (n/a 350, 356, 375)
- Free standing dinette with (4) chairs
- Hi back desk chair
- (1) Hide-a-bed sofa in place of bottom bunk (356)
- (2) Hide-a-bed sofas in place of bottom bunks (350)

● **EQUIPMENT OPTIONS**

- 12 cubic foot 4 door refrigerator (n/a 295, 350)
- Electric fireplace
- 2nd 13,500 BTU air conditioner
- Power Vent Fan (location varies by model)
  - » Bedroom
  - » Bathroom
  - » Rear Bathroom (350, 356)
  - » Bunkroom
  - » Living Room
- Generator ready (Onan 5.5 KW specifications)
- Onan Marquis Gold 5.5 KW – LP generator

**MANDATORY PACKAGES**

MM - MOVING TO MONTANA PACKAGE  
BL - BETTER LIVING PACKAGE

**WALL CONSTRUCTION (R-10)**

- ① 30" Wide x 78" Tall Entry Door with Window
- ② Deep Tint Safety Glass Windows with UV Inhibitor
- ③ Adjustable Electric Patio Awning
- ④ Medallion Hi-Gloss Fiberglass Exterior Walls, Baggage Doors & Entry Doors
- ⑤ Dual 1/8" Luan Backers with Staggered Seams
- ⑥ High Density Block Foam Insulation
- ⑦ 2" Welded Aluminum Wall Studs
- ⑧ Electro-Galvanized Sheet Metal Backing Strips
- ⑨ Max Turn Fiberglass Front Cap with Improved Turning Radius, & Hitch Vision Mirror
- ⑩ Rear Ladder

**ROOF CONSTRUCTION (R-38)**

- ⑪ One-Piece EPDM Roof with 12-year Warranty
- ⑫ Aluminum Radius Roof Corner Molding Wrap
- ⑬ 3/8" Fully Walkable Roof Decking
- ⑭ Radiant Technology Insulation
- ⑮ Fiberglass Insulation
- ⑯ 5" Arched Roof Rafters
- ⑰ Dometic 15,000 BTU A/C

**FLOOR CONSTRUCTION (R-21)**

- ⑱ Residential Carpet with Stain Protection
- ⑲ Residential Carpet Padding
- ⑳ Residential Linoleum
- ㉑ 5/8 Seamless Floor Decking
- ㉒ 3" Welded Aluminum Floor Joists
- ㉓ Enclosed & Insulated Water Lines Between Floor Joists
- ㉔ Large Capacity Heat Duct
- ㉕ Fiberglass Insulation
- ㉖ Astro-Foil Insulation Below Holding Tanks
- ㉗ Fully Enclosed Underbelly with One Piece Fluted Polypropylene

**TIRES & CHASSIS**

- ㉘ 10" Steel "Powder Coated" I-Beam Frame with Drop Frame Pass Through Storage
- ㉙ MOR/Ryde™ CRE 3000 Suspension
- 8-Lug Dexter E-Z Lube Axles with Nev-R-Adjust™ Brakes
- 16" E-Range Radial Tires

**5" ARCHED ROOF RAFTER**



*Provides Unique Interior Feel and Look*

*5" Thick Insulation Consistent Throughout the Roof*

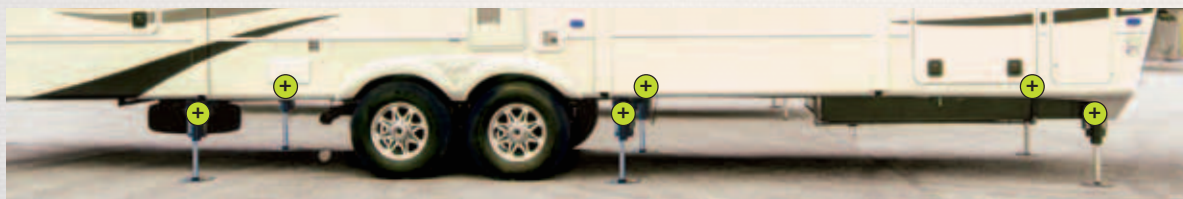
*Arched Rafters Provide Greater Roof Weight Distribution*

*Increased Interior Height Through the Mountaineer Fifth Wheel*



**6 POINT HYDRAULIC AUTO LEVELING SYSTEM**

*This system has the strength you need and it is so easy to use that with one touch the coach levels itself.*



# ULTIMATE TOWABILITY BY APPLYING "MAX TURN" TECHNOLOGY

## BUILT BY EXPERIENCE



### LOW HITCH WEIGHTS

While other fifth wheels put tremendous strain on the tow vehicle with hitch weights exceeding 2500 lbs, most Mountaineer models offer hitch weights below 2300 lbs.



### MOR/Ryde™ CRE 3000 SUSPENSION

The MOR/Ryde™ CRE 3000 Suspension increases dynamic axle travel by up to 3 inches! Increased travel means smoother towing, improved towability and better protection from damaging road shock.



### 16" E-RANGE RADIAL TIRES

Every Mountaineer fifth wheel runs on aluminum 8-lug wheels and 16" E-Range radial tires.



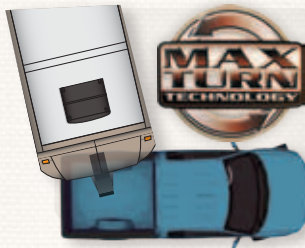
### DEXTER NEV-R-ADJUST™ BRAKES

The Dexter Nev-R-Adjust™ brakes adjust automatically in the forward moving direction, eliminating the need for manual adjustments while maintaining optimum performance and braking power.



### MAX TURN TECHNOLOGY FRONT CAP

The Max Turn Technology molded fiberglass front cap features a dramatic, aviation style curved shape to dramatically reduce the drag coefficient for maximum fuel economy.



### MAX TURN TECHNOLOGY FRONT CAP TURNING RADIUS

Max Turn technology features an integrated frame and front cap design to allow for an industry best short bed truck to fifth wheel angle. Because the front rail of the Mountaineer frame is curved to provide more radius, making a 90 degree turn no problem with short bed trucks.



**FOUR SEASON LIVING:**  
ZERO DEGREE TESTED AND UNSURPASSED HOT WEATHER COMFORT

» The industry leader in four season fifth wheel capabilities, Mountaineer has been tested and approved for zero degree usage.

» Radiant technology insulation combined with a layer of fiberglass insulation provide the equivalent of R-38 roof insulation. Unlike conventional fifth wheel roofs that taper down to 2" thick at the sidewall, Mountaineer's arched roof provides consistent 5" thick roof insulation across the entire span from sidewall to sidewall.

» The Mountaineer sidewalls are laminated with R-10 solid block foam insulation.

» The floor is insulated with a layer of heat reflective Astro-Foil plus a layer of fiberglass insulation equaling an R-21 value. Most importantly, the water lines are installed between the floor joists, near the heat duct and above all of the insulation and the heated underbelly.

» The holding tanks and dump valves are completely enclosed, insulated and heated.

» The low point drains are enclosed in the heated exterior convenience center.

» Every Mountaineer is wired and framed for a second air conditioner. The optional second air conditioner (13,500 BTU) can be installed at the factory or dealership.

FEB. 2014

**MOUNTAINEER**  
WWW.KEYSTONERV.COM/MOUNTAINEER

Visit the Montana Owner's Club web site  
Independently created and maintained by  
Montana fifth wheel owners.  
WWW.MONTANAOWNERS.COM



Go RVing



**Keystone RV Company**

Colton RV  
North Tonawanda, NY 14120  
(716) 694-0188  
(800) 628-4889  
www.ColtonRV.com