



# Springdale

by Keystone

TRAVEL TRAILERS & FIFTH WHEELS

**EASTERN**  
EDITION



**A BETTER WAY  
TO CAMP**

**DSI**  
Annual RVOA DEALER  
SATISFACTION INDEX





**Keystone RV  
Company**

When Cole Davis founded Keystone RV in 1996 his vision was clear: Build a quality RV loaded with features priced thousands less than other RVs on the market. To accomplish his goal, Cole would recruit and build a strong team, focus on keeping overhead low, and empower the people closest to the customer to make decisions. Within a few short months after opening the doors, Keystone produced its very first camper. Delivering big on quality, features and value, the public fell in love and a star was born.

As customers appetite skyrocketed, new Keystone models were added to satisfy growing customer demand. Along with this tremendous growth came the need for expanded production. To meet this need, more manufacturing plants were built and staffed. By the beginning of 2000, Keystone was leading the industry in fifth wheel and trailer sales. Today, Keystone RV Company has grown to encompass over 1 million square feet of manufacturing space with facilities in Goshen, Indiana and Pendleton, Oregon. While Keystone is no longer the small "start up" we once were, our mission has remained true to Cole's vision—"Do the job right and make sure we deliver a quality product every time."

# Our Story



An original Keystone RV brand 18 years and running strong... SPRINGDALE is a benchmark of success in the RV industry as well as a legacy for our company Keystone RV. Having made countless camping adventures even better... The SPRINGDALE brand of travel trailers has exceeded expectations and helped create memories for our customers that will last for many years to come.

At Keystone RV, we pride ourselves on unmatched quality control procedures and maintain customer service that is second to none. With our 18 year proven track record... SPRINGDALE travel trailers are constructed with our customers in mind. This quality craftsmanship and attention to detail ensures our customers a peace of mind that they will continue to get the most out of their camping season.

With SPRINGDALE, we understand that our customer's hard earned money should go just as far as their adventures can take them. That is why we believe in the importance of delivering the best floor plans, best features, best look and best quality... period. Once on the road to adventure, our customers will see how camping in their SPRINGDALE travel trailer "is just plain better"! Unmatched in its design, SPRINGDALE offers numerous features you can't find on any of our competitors, as well as more standard options and amenities than any travel trailer in its class. From our interior vaulted ceiling, 14' Super Slide Room to the "Do More" dinette table, we have remained focused on providing great value and convenient features that will always make camping in your SPRINGDALE travel trailer... A Better Way To Camp!



# ***Springdale***

by Keystone 

## **THE COMPLETE CHOICE**

### **SUMMERLAND MINI SINGLE AXLE**

- Full Size Compact Travel Trailer
- Complete Floorplan Choices
- Light Weight with Elbow Room
- Amazing Interior Height in its Class



### **SUMMERLAND**

- Wide Variety of Floorplans
- Everything You Need To Go Camping
- For the First Time Buyer to the Experienced Camper
- Featuring Summerland Series Package



### **SPRINGDALE**

- Complete Collection of Couples Coaches & Family Bunk Models
- Full Featured Travel Trailer With A Look & Options Not Found On Our Competition
- Everything From Single Slide 25' to 38' Double Slides



### **SPRINGDALE FIFTH WHEELS**

- The Full Featured Entry Level 5th
- Great Bunkhouse & Couples Units
- Full Color Aluminum Frame Laminated Fiberglass Sidewalls





## ADVENTURE PACKAGE



**235RB** WEIGHT: 6069 LENGTH: 27' 5"



**240BH** WEIGHT: 6407 LENGTH: 28' 1"



**262RK** WEIGHT: 6377 LENGTH: 30' 2"



**271RL** WEIGHT: 6961 LENGTH: 32' 11"



**287RB** WEIGHT: 7781 LENGTH: 32' 10"



**293RK** WEIGHT: 7059 LENGTH: 33' 4"



# TRAVEL TRAILER FLOORPLANS



**303BH** WEIGHT: 8086 LENGTH: 35' 0"



**311RE** WEIGHT: 8343 LENGTH: 35' 7"



**332RB** WEIGHT: 9263 LENGTH: 37' 7"



// 332RB SHOWN IN ESPRESSO DECOR



// 293RK SHOWN IN ESPRESSO DECOR

| MODEL | SHIPPING WEIGHT | CARRYING CAPACITY | HITCH WEIGHT | EXT LENGTH* | EXT HEIGHT | FRESH WATER | WASTE WATER | GREY WATER | LPB |
|-------|-----------------|-------------------|--------------|-------------|------------|-------------|-------------|------------|-----|
| 235RB | 6069            | 1726              | 795          | 27' 5"      | 11' 3"     | 52          | 39          | 78         | 60  |
| 240BH | 6407            | 1593              | 735          | 28' 11"     | 11' 3"     | 52          | 39          | 69         | 60  |
| 282RK | 6377            | 1373              | 750          | 30' 2"      | 11' 3"     | 52          | 30          | 78         | 60  |
| 271RL | 6961            | 2574              | 735          | 31' 10"     | 11' 3"     | 52          | 39          | 30         | 60  |
| 287RB | 7781            | 1954              | 935          | 32' 10"     | 11' 3"     | 52          | 39          | 69         | 60  |
| 293RK | 7059            | 2686              | 925          | 33' 4"      | 11' 3"     | 52          | 30          | 69         | 60  |
| 303BH | 8086            | 1684              | 970          | 35' 0"      | 11' 4"     | 52          | 39          | 39         | 60  |
| 311RE | 8343            | 1417              | 960          | 35' 7"      | 10' 11"    | 52          | 39          | 78         | 60  |
| 332RB | 9263            | 2112              | 1215         | 37' 7"      | 10' 11"    | 52          | 30          | 78         | 60  |

DISCLAIMER: Product information is as accurate as possible as of the date of publication of this brochure. All features, floor plans, and specifications in this brochure are subject to change without notice. Please also consult Keystone's web site at [www.keystone-recreo.com](http://www.keystone-recreo.com) for more current product information and specifications. The Vehicle Identification Number (VIN) is located on the front of the vehicle. CAUTION: Owners of Keystone recreational vehicles are solely responsible for the selection and proper use of the vehicles. All purchasers should consult with a motor vehicle manufacturer or their dealer concerning the purchase and use of suitable tow vehicles for Keystone products. Keystone disclaims any liability for damages suffered as a result of the selection, operation, use or misuse of the tow vehicle. \*Length is defined as the distance from the centerline of hitch pin to center of rear bumper of 1 mile, 61.17.



# Springdale *Limited Edition*

by Keystone



**260LE** WEIGHT: 5210 LENGTH: 28' 10"



**270LE** WEIGHT: 7050 LENGTH: 32' 11"

| MODEL | SHIPPING WEIGHT | CARRYING CAPACITY | HITCH WEIGHT | EXTERIOR LENGTH" | EXTERIOR HEIGHT | FRESH WATER | WASTE WATER | GREY WATER | LPG |
|-------|-----------------|-------------------|--------------|------------------|-----------------|-------------|-------------|------------|-----|
| 260LE | 5131            | 2509              | 640          | 28' 10"          | 10' 6"          | 52          | 39          | 30         | 60  |
| 270LE | 6920            | 2665              | 785          | 32' 11"          | 11' 3"          | 52          | 39          | 60         | 60  |

// 270LE SHOWN IN KONA DECOR





## Springdale

TRAVEL IN COMFORT, ENJOY THE TRIP, IT'S A WAY OF LIFE...

# 38's



**38FL** WEIGHT: 8660 LENGTH: 38' 11"

- SECTIONAL SOFA W/ FIREPLACE
- 18 CU. FT. RESIDENTIAL REFRIGERATOR
- 10 GALLON GAS/ELECTRIC OSI WATER HEATER
- BEDROOM SLIDE



**38BH** WEIGHT: 8729 LENGTH: 38' 11"

- BUNKHOUSE W/ KIDS DINETTE
- 18 CU. FT. RESIDENTIAL REFRIGERATOR
- 10 GALLON GAS/ELECTRIC OSI WATER HEATER
- BEDROOM SLIDE



**38FQ** WEIGHT: 8625 LENGTH: 38' 11"

- TWO BEDROOMS
- 18 CU. FT. RESIDENTIAL REFRIGERATOR
- 10 GALLON GAS/ELECTRIC OSI WATER HEATER
- BEDROOM SLIDE

| MODEL | SHIPPING WEIGHT | CARRYING CAPACITY | HTCH WEIGHT | EXT LENGTH* | EXT HEIGHT | FRESH WATER | WASTE WATER | GREY WATER | LPG |
|-------|-----------------|-------------------|-------------|-------------|------------|-------------|-------------|------------|-----|
| 38BH  | 8729            | 2426              | 995         | 38' 11"     | 11' 4"     | 56          | 39          | 69         | 60  |
| 38FL  | 8660            | 2445              | 945         | 38' 11"     | 11' 4"     | 56          | 39          | 69         | 60  |
| 38FQ  | 8625            | 2510              | 975         | 38' 11"     | 11' 4"     | 56          | 39          | 69         | 60  |

## TOP 6 FEATURES

- 18 CU. FT. RESIDENTIAL REFRIGERATOR
- 10 GALLON GAS/ELECTRIC OSI WATER HEATER
- BEDROOM SLIDE
- 50 AMP SERVICE WIRED & BRACED FOR 2ND AC
- HEATED & ENCLOSED UNDERBELLY
- 60" PATIO DOOR



// 38FL SHOWN IN ESPRESSO DECOR



// 38FL LIVING AREA



*Springdale*

*Springdale*  
**VAULTED CEILING**  
— RAISING THE BAR ON INNOVATION —  
**6'10"**

// 311RE SHOWN IN KONA DECOR



8 // 311RE SHOWN IN KONA DECOR





# SPRINGDALE INTERIORS



// 235RB SHOWN IN ALMOND DECOR



// 293RK KITCHEN



// 235RB BATHROOM



// 240BH BEDROOM



// 332RB BUNKROOM



# FEATURES



EXCLUDES: 280LE, SM2020, SM2600

## TOP SELLING FEATURES

1. VAULTED CEILING
2. LED TV W/ BLUETOOTH & DVD SYSTEM
3. DIGITAL CHARGING STATION
4. HEATED/ENCLOSED UNDERBELLY
5. FRICTION HINGE ODOR
6. TRI-FOLD SLEEPER SOFA
7. BLACK TANK FLUSH
8. MAPLE CABINET DOORS  
25 YR. WARRANTY

9. DYNASpan FLOORING  
W/ 25 YR. WARRANTY
10. ALUMINUM WHEELS
11. DO-MORE DINETTE TABLE
12. FULL BODY GRAPHICS
13. 7 CU. FT. STAINLESS STEEL  
REFRIGERATOR

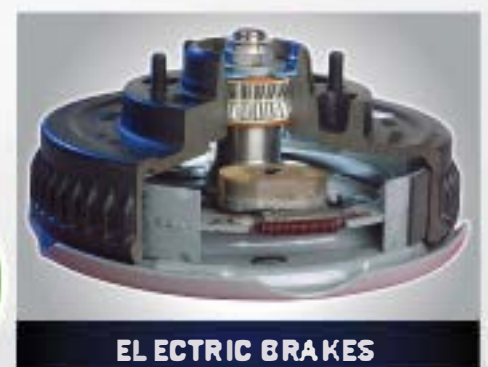




- 1 Continuous Steel I-Beam Powder Coated Frame
- 2 Walkable Crowned Roof
- 3 Hurricane Strap Reinforced Structure
- 4 Oversized Pass Through Storage
- 5 Diamond Plate Front Protector
- 6 One Piece Alpha-Ply Roof
- 7 3/8" Walkable Roof Decking
- 8 Dual 30 Lb. LP Bottles
- 8 Crowned Slide Box
- 10 Electric Awning
- 11 Residential Batten Insulation Throughout
- 12 Dual Battery Storage Tray
- 13 XL Entry Assist Handle
- 14 5/8" Dynaspan Floor Decking
- 15 Aluminum Wheels (Dpt.)
- 16 Triple Stage Slide Room Seals
- 17 Aluminum Triple Entry Steps (Select Models)
- 18 2x3 Floor Joists 12" on Center
- 19 Wide Stance Axles (Select Models)
- 20 Radius Skirting
- 21 E-Z Lube Axles
- 22 0.30 Aluminum Baked Enamel Siding
- 23 Black Framed, Tinted Safety Glass Windows
- 24 Rain Gutter with Extended Down Spouts
- 25 Fender Skirts
- 26 13,500 BTU Ducted Air Conditioner (Dpt. 15K)
- 27 Bumper Sewer Hose Storage
- 28 Exterior TV Mount
- 29 [4] Stabilizer Jacks
- 30 Electric Tongue Jack (Dpt.)



- 30K BTU FURNACE
  - ENCLOSED UNDERBELLY
  - DEDICATED AIR DUCT FORCING HEAT DIRECTLY FROM FURNACE INTO THE UNDERBELLY
- (EXCLUDES: 250LE, SM2020, SM2800)





FIFTH WHEEL FLOORPLANS



**253FWRE** WEIGHT: 8483 LENGTH: 32' 10"



**262FWRK** WEIGHT: 7290 LENGTH: 28' 8"



**286FWBH** WEIGHT: 8296 LENGTH: 33' 6"



**278FWRL** WEIGHT: 8157 LENGTH: 31' 0"



**302FWRK** WEIGHT: 8880 LENGTH: 33' 1"



POWER SLIDE JACKS



UPGRADED FAUCET



LED INTERIOR LIGHTING



ALUMINUM ENTRY STEPS



LED LIGHT IN PASS-THRU STORAGE



FIBERGLASS FRONT CAP



BEDROOM WARDROBE SLIDE



DOUBLE ENTRY BATH



BACKUP CAMERA PREP



BUMPER GRILL MOUNT

TOP SELLING FEATURES

- 50 AMP SERVICE WIRED & BRACED FOR 2NO A/C
- HEATED & ENCLOSED UNDERBELLY
- LAMINATED SIDEWALLS
- ALL FLOORPLANS UNDER 9,000 LBS.

| MODEL   | SHIPPING WEIGHT | CARRYING CAPACITY | HITCH WEIGHT | EXT LENGTH* | EXT HEIGHT | *FRESH WATER | *FRESH WATER | GREY WATER | LPG |
|---------|-----------------|-------------------|--------------|-------------|------------|--------------|--------------|------------|-----|
| 253FWRE | 8483            | 1807              | 1500         | 32' 10"     | 11' 10"    | 52           | 39           | 39         | 60  |
| 262FWRK | 7290            | 2770              | 1260         | 28' 8"      | 11' 10"    | 52           | 39           | 78         | 60  |
| 278FWRL | 8157            | 2038              | 1395         | 31' 0"      | 11' 10"    | 52           | 39           | 39         | 60  |
| 286FWBH | 8296            | 2244              | 1740         | 33' 6"      | 11' 4"     | 52           | 39           | 78         | 60  |
| 302FWRK | 8880            | 1440              | 1520         | 33' 9"      | 11' 4"     | 52           | 39           | 78         | 60  |



// 302FWRK SHOWN IN KONA DECOR



// 253FWRE SHOWN IN ESPRESSO DECOR



# SUMMERLAND SERIES



**2020QB** WEIGHT: 4279 LENGTH: 24' 10"



**2200MB** WEIGHT: 5437 LENGTH: 26' 2"



**2450RB** WEIGHT: 5033 LENGTH: 26' 2"



**2570RL** WEIGHT: 6005 LENGTH: 29' 9"



**2600TB** WEIGHT: 4967 LENGTH: 28' 10"



**2660RL** WEIGHT: 6057 LENGTH: 28' 11"

## SUMMERLAND SERIES PACKAGE

**BUMPER GRILL MOUNT**



**RAMPED IN/LED LIGHTS**



**4-HEEL TRAC STABILIZER JACKS**



**BACKUP CAMERA/REP**



**LED LIGHT IN PASS-THRU STORAGE**



**\*HEATED & ENCLOSED UNDER BELLY  
EXCLUDES 2020, 2600**



**LED INTERIOR LIGHTS**



**DIAMOND PLATE**



**UPGRADED FAUCET**



**\*SELECT MODELS**



# SUMMERLAND SERIES FLOORPLANS



**2720BH** WEIGHT: 6105 LENGTH: 30' 0"



**2820BH** WEIGHT: 6597 LENGTH: 32' 1"



**2960BH** WEIGHT: 6701 LENGTH: 32' 2"



**2980BH** WEIGHT: 6528 LENGTH: 32' 7"



**3030BH** WEIGHT: 7641 LENGTH: 34' 11"

## STAY IN TOUCH

Springdale & Springdale Summerland Series are always just a touch away. You'll find 360 virtual tours, location of your nearest dealer, photos, videos and all of the latest information about Springdale & Springdale Summerland Series. Everything you need can be accessed anytime, day or night, from home or on the road. You can also find us on the Keystone RV Facebook.

[KEYSTONERV.COM/SPRINGDALE](http://KEYSTONERV.COM/SPRINGDALE)



| MODEL  | SHIPPING WEIGHT | CARRYING CAPACITY | HITCH WEIGHT | EXT LENGTH* | EXT HEIGHT | FRESH WATER | WASTE WATER | GREY WATER | LE |
|--------|-----------------|-------------------|--------------|-------------|------------|-------------|-------------|------------|----|
| 2020QB | 4279            | 2221              | 515          | 24' 10"     | 10' 6"     | 52          | 30          | 30         | 40 |
| 2200MB | 5437            | 2233              | 670          | 26' 2"      | 11' 1"     | 52          | 30          | 78         | 40 |
| 2450RB | 5033            | 2567              | 600          | 27' 11"     | 10' 6"     | 52          | 39          | 69         | 40 |
| 2570RL | 6005            | 1610              | 615          | 29' 8"      | 10' 6"     | 52          | 39          | 69         | 40 |
| 2800TB | 4261            | 2649              | 510          | 28' 10"     | 10' 6"     | 52          | 39          | 30         | 40 |
| 2880RL | 6051            | 1594              | 645          | 28' 11"     | 10' 11"    | 52          | 39          | 39         | 40 |
| 2720BH | 6105            | 1895              | 1075         | 31' 4"      | 10' 6"     | 52          | 39          | 39         | 40 |
| 2820BH | 6597            | 2003              | 690          | 32' 1"      | 11' 3"     | 52          | 39          | 69         | 40 |
| 2980BH | 6701            | 3019              | 920          | 33' 2"      | 10' 11"    | 52          | 30          | 39         | 40 |
| 2980BH | 6528            | 2987              | 715          | 32' 7"      | 10' 11"    | 52          | 30          | 39         | 40 |
| 3030BH | 7641            | 2029              | 930          | 34' 11"     | 10' 11"    | 52          | 39          | 39         | 40 |

**DISCLAIMER:** Product information is as accurate as possible as of the date of publication of this brochure. All features, floor plans, and specifications in this brochure are subject to change without notice. Please also consult Keystone's web site at [www.keystonerv.com](http://www.keystonerv.com) for more current product information and specifications. **Tow Vehicle Declaration:** CAUTION: Owners of Keystone recreational vehicles are solely responsible for the selection and proper use of tow vehicles. All customers should consult with a motor vehicle manufacturer or their dealer concerning the purchase and use of suitable tow vehicles for Keystone products. Keystone disclaims any liability or damages suffered as a result of improper operation, use or misuse of a tow vehicle. **KEYSTONE'S LIMITED WARRANTY DOES NOT COVER DAMAGE TO THE RECREATIONAL VEHICLE OR THE TOW VEHICLE AS A RESULT OF THE SELECTION, OPERATION, USE OR MISUSE OF THE TOW VEHICLE.** \*Length is measured as the distance from the center line of the pin/coupler to the rear bumper of a 2011 D1.17



# SUMMERLAND SERIES INTERIORS



// 2960BH SHOWN IN ESPRESSO DECOR



// 3030BH BUNKROOM



// 2200MB SHOWN IN ALMOND DECOR



// 2960BH STORAGE



// 2600TB SHOWN IN ALMOND DECOR



// 2200MB BATHROOM



SUMMERLAND SERIES SINGLE AXLE FLOORPLANS

SUMMERLAND SERIES Mini



TOP 5 SELLING FEATURES

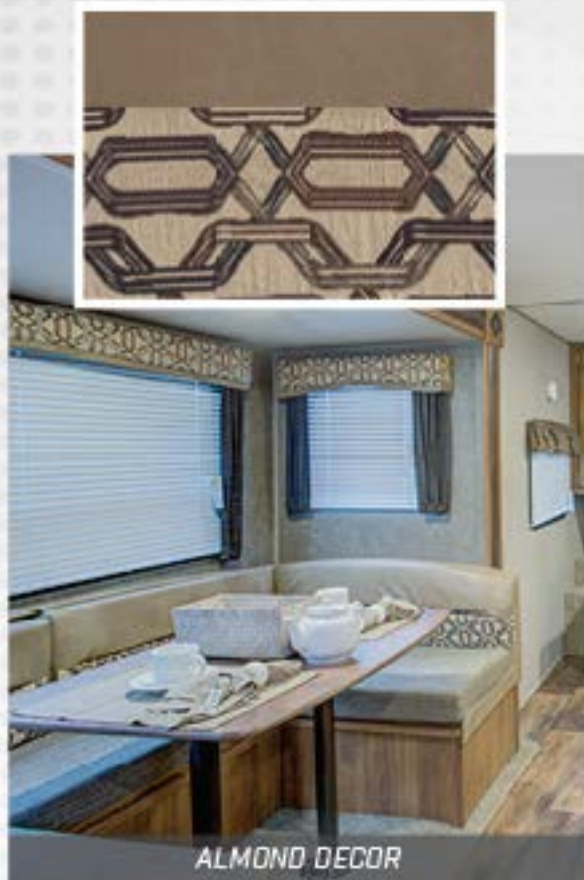
- 8' WIDE
- 78" INTERIOR HEIGHT
- GAS STRUTTED DOOR
- 3 CU. FT. GAS/ELECTRIC REFRIGERATOR
- SEAMLESS FLOORING



| MODEL  | SHIPPING WEIGHT | CARRYING CAPACITY | WIND WEIGHT | EXTERIOR LENGTH* | EXTERIOR HEIGHT | FRESH WATER | WASTE WATER | GREY WATER | JPG |
|--------|-----------------|-------------------|-------------|------------------|-----------------|-------------|-------------|------------|-----|
| 1700FQ | 3288            | 1112              | 480         | 21' 5"           | 10' 8"          | 27          | 30          | 30         | 20  |
| 1750RD | 3298            | 1101              | 465         | 21' 5"           | 10' 6"          | 27          | 30          | 30         | 20  |
| 1800BH | 3234            | 1166              | 440         | 21' 5"           | 10' 6"          | 27          | 30          | 30         | 20  |
| 1850FL | 3340            | 1060              | 545         | 21' 5"           | 10' 6"          | 27          | 30          | 30         | 20  |



## DECOR OPTIONS / AWARDS



ALMOND DECOR



ESPRESSO DECOR



KONA DECOR

**ONLY BRAND IN SEGMENT TO RECEIVE AWARD IN 2016!**



**SPRINGDALE HAS EARNED MULTIPLE RVDA  
DEALER SATISFACTION INDEX AWARD**

**STAY IN TOUCH**



Springdale & Summerland are always just a touch away. You'll find 360 virtual tours, location of your nearest dealer, photos, videos and all of the latest information about Springdale & Summerland. Everything you need can be accessed anytime, day or night, from home or on the road. You can also find us on the Keystone RV Facebook



| EXTERIOR   | SPRINGDALE TT | SPRINGDALE FW | SUMMERLAND TT | MINI |
|--|---------------|---------------|---------------|------|
| Laminated Fiberglass Sidelwalls                  | -             | S             | -             | -    |
| Electric Adjustable Front Landing Gear           | -             | S             | -             | -    |
| Diamond Plate                                    | S             | -             | S             | S    |
| Adjustable Power Awning                          | S             | S             | S             | -    |
| Manual Patio Awning                              | -             | -             | -             | S    |
| Outside 110 receptacle                           | S             | S             | S             | S    |
| Aluminum Wheels                                  | 0             | 0             | 0             | -    |
| Power Tongue Jack                                | 0             | -             | 0             | -    |
| XL Entry Assist Handle                           | S             | S             | -             | -    |
| Arctic Package (Excludes: 260LE, 2600TB, 2020QB) | S             | S             | S             | -    |
| Powder Coated I-Beam Frame                       | S             | S             | S             | -    |
| Spread Axle (Models w/Slide s)                   | S             | S             | -             | -    |
| Easy Ultra-lube Axles                            | S             | S             | S             | S    |
| Full Length Outriggers on Frame                  | S             | S             | S             | S    |
| Dual Battery Rack                                | S             | S             | S             | -    |
| Two 30 lb. LP Bottles                            | S             | S             | -             | -    |
| 2 Exterior Speakers                              | S             | S             | S             | S    |
| TV Antenna with Booster                          | S             | S             | S             | S    |
| Oversized Pass Thru Storage                      | S             | S             | S             | S    |
| Hurricane Straps Reinforced Structure            | S             | S             | S             | S    |
| Four heavy duty stabilizer jacks                 | 0             | -             | 0             | 0    |
| Two Heavy Duty Stabilizer Jacks                  | -             | S             | -             | S    |
| Radiant Tires                                    | S             | S             | S             | S    |
| Cambered chassis                                 | S             | S             | S             | S    |
| 96" Exterior width                               | S             | S             | S             | S    |
| Exterior Shower                                  | S             | S             | 0             | -    |
| Spare Tire and Carrier                           | 0             | 0             | 0             | 0    |
| E-Z Open Entry Step                              | S             | S             | S             | S    |
| 50 Amp Service w/Detachable Cord (Select Models) | S             | S             | -             | -    |
| Black Tank Flush (Exclude s 280LE, 270LE)        | S             | S             | -             | -    |
| INTERIOR   |               |               |               |      |
| Mini Blinds                                      | -             | -             | S             | S    |
| Tri-Fold Sleeper Sofa (Select Models)            | 0             | 0             | -             | -    |
| Jackknife Sofa Bed                               | -             | -             | S             | S    |
| Large Medicine Cabinet                           | S             | S             | S             | S    |
| Pleated Night Shades in Living Area              | S             | S             | -             | -    |
| Full Stuffed Storage under Master Bed            | S             | S             | -             | -    |
| Nightstand w/Drawer in Bedroom                   | S             | S             | -             | -    |
| 32" TV (39" on some models)                      | 0             | 0             | 0             | -    |
| 2 Interior Speakers                              | S             | S             | S             | S    |
| AM/FM Bluetooth w/MP3 Stereo                     | -             | -             | S             | -    |
| AM/FM Bluetooth CD/DVD Ent. System               | S             | S             | -             | -    |
| Residentia Microwave                             | S             | S             | S             | S    |
| Monitor Panel                                    | S             | S             | S             | S    |
| 7 Cu. Ft. Refrigerator                           | S             | S             | -             | -    |
| 6 Cu. Ft. Refrigerator                           | -             | -             | S             | -    |
| Residential Refrigerator (38BH, 38FL, 38FQ only) | S             | -             | -             | -    |

| INTERIOR (CONT.)  | SPRINGDALE TT | SPRINGDALE FW | SUMMERLAND TT | MINI |
|---|---------------|---------------|---------------|------|
| 32 Cu. Ft. Gas/Electric Refer   | -             | -             | -             | S    |
| Ball Bearing Drawer Guides  | S             | S             | S             | S    |
| Reversible Dinette Cushions   | S             | S             | S             | S    |
| High Rise Detachable Sprayer Faucet   | S             | S             | S             | S    |
| High Impact Acrylic Sink  | S             | S             | S             | S    |
| 18" Oven w/3 Burner Cooktop   | S             | S             | S             | -    |
| 2 Burner Cooktop  | -             | -             | -             | S    |
| Freestanding Table & Chairs (Select Models)   | 0             | 0             | -             | -    |
| "Do More Dinette" Table (Select Models)   | S             | S             | -             | -    |
| 12 Volt 55 Amp Converter  | S             | S             | S             | -    |
| 15,000 BTU Air Conditioner  | 0             | 0             | 0             | -    |
| 13,500 BTU Air Conditioner  | S             | S             | S             | 0    |
| 18K BTU Air Conditioner   | -             | -             | -             | S    |
| Forced Air 051 30K BTU Furnace w/Thermostat (Ducted most models) (Including 2020, 2600) | S             | S             | S             | -    |
| 20K BTU Furnace   | -             | -             | -             | S    |
| 6 Gal. Gas/Electric 051 Water Heater  | S             | S             | S             | -    |
| Skylight Over Tub/Shower  | S             | S             | -             | -    |
| Flex Pex Tubing with 10 Year Warranty   | S             | S             | S             | S    |
| 92" Vaulted Ceiling   | S             | -             | -             | -    |
| Tub Surround  | S             | S             | S             | -    |
| Foot Flush Toilet   | S             | S             | S             | S    |
| RG6 Cable and Satellite Wiring  | S             | S             | S             | S    |
| 2x3 Floor Construction 12" OC w/S/Sth Decking   | S             | S             | S             | S    |
| 16' on Center Raised Roof Truss System  | S             | S             | S             | S    |
| 41/2" Crowned Roof  | S             | S             | S             | S    |
| 16' on Center Side Walls  | S             | S             | S             | S    |
| R-7 Insulation Floor, Roof, Walls   | S             | S             | S             | S    |
| SUMMER PACKAGE *  | -             | -             | S             | -    |
| SAFETY  |               |               |               |      |
| Fire Extinguisher   | S             | S             | S             | S    |
| Smoke Detector  | S             | S             | S             | S    |
| 1 P Detector  | S             | S             | S             | S    |
| CO Detector   | S             | S             | S             | S    |
| Safety Chairs   | S             | S             | S             | S    |
| Emergency Break-a-way switch  | S             | S             | S             | S    |

## \* SUMMERLAND SUMMER PACKAGE \*

- Outdoor Shower
- 6 Gal. Gas/Electric 051 Water Heater
- RG6 Cable and Satellite Wiring
- 2 - 20# LP Tanks w/Cover
- Tub Surround

SPRINGDALE TT = SPRINGDALE TRAVEL TRAILERS

SPRINGDALE FW = SPRINGDALE FIFTH WHEELS

SUMMERLAND TT = SUMMERLAND SERIES TRAVEL TRAILERS

MINI = SUMMERLAND SINGLE AXLE TRAVEL TRAILERS

S STANDARD 0 OPTIONAL - NOT AVAILABLE



# Springdale

by Keystone 



TRAVEL TRAILERS • FIFTH WHEELS • SINGLE AXLE TRAVEL TRAILERS



## PURCHASING YOUR RV LOCALLY

It's up to you where you purchase your new Springdale, but may we suggest your local dealer? Not only does it help your local economy and provide jobs, but it will also give you an opportunity to develop a service relationship with someone that will come to know you and your coach. Congratulations on finding the best built, best equipped and best value in the industry. Happy travels!

### YOUR LOCAL DEALER IS:

Colton RV  
North Tonawanda, NY 14120  
(716) 694-0188  
(800) 628-4889  
[www.ColtonRV.com](http://www.ColtonRV.com)

Colton RV  
Orchard Park, NY 14127  
(716) 957-3250  
(800) 628-4889  
[www.ColtonRV.com](http://www.ColtonRV.com)

JANUARY 2017



**Keystone RV  
Company**

[WWW.KEYSTONERV.COM](http://WWW.KEYSTONERV.COM)  
574.535.2100 • 2842 HACKBERRY DRIVE  
P.O. BOX 2000 • GOSHEN, IN 46527



Go RVing

DISCLAIMER: Product information is as accurate as possible as of the date of publication of this brochure. All features, floor plans, and accessories in this brochure are subject to change without notice. Please also consult Keystone's web site at [www.keystonerv.com](http://www.keystonerv.com) for more current product information and specifications. Tour Vehicle Objection: CAUTION: Owners of Keystone recreational vehicles are solely responsible for the selection and proper use of tour vehicles. All customers should consult with a motor vehicle manufacturer or their dealer concerning the purchase and use of suitable tour vehicles for Keystone products. Keystone disclaims any liability or damages suffered as a result of the selection, operation, use or misuse of a tour vehicle. KEYSTONE'S LIMITED WARRANTY DOES NOT COVER DAMAGE TO THE RECREATIONAL VEHICLE OR THE TOWING VEHICLE AS A RESULT OF THE SELECTION, OPERATION, USE OR MISUSE OF THE TOWING VEHICLE. Length is defined as the distance from the centerline of the hitch/coupler to the bumper of the towed vehicle.

A BETTER WAY TO CAMP | [WWW.KEYSTONERV.COM/SPRINGDALE](http://WWW.KEYSTONERV.COM/SPRINGDALE)