



VILANO
VANLEIGH



A DIVISION OF TIFFIN



VANLEIGH
A DIVISION OF TIFFIN

VILANO

2021



ADVENTURE WITH ALL THE COMFORTS OF HOME

Vilano owners enjoy the best of both worlds—the perfect way to travel, at the perfect price. Designed for those who seek adventure without sacrificing the comforts of home, Vilano offers multiple floor plans and weight variations expertly crafted to combine luxury with leisure. Trailblazing, exploring, and conquering the open road comes natural in a Vilano.



VANLEIGH

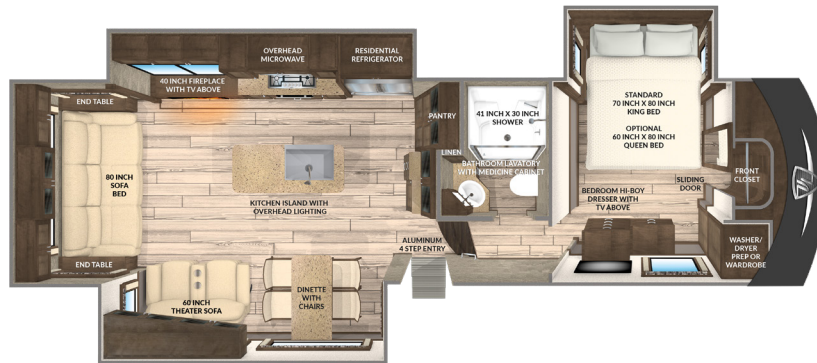
A DIVISION OF TIFFIN

BUILT AROUND YOU®

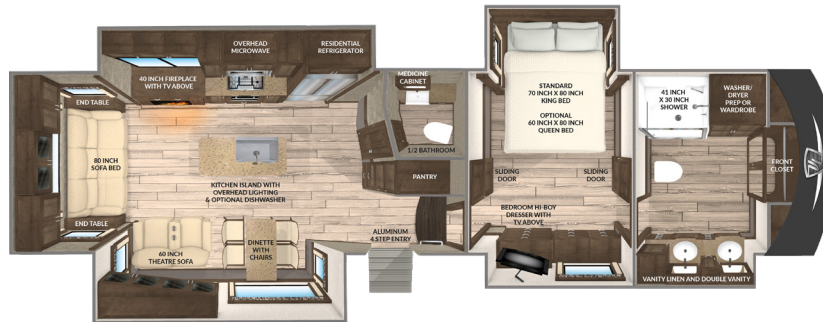
We understand that you have many options to consider when purchasing a new RV and we thank you for taking the time to consider ours. The Vanleigh team gets to work well before dawn every morning with one goal in mind, to create the best built product in the marketplace. We believe in building a product that we would want to RV in, whether it's for a weekend getaway or a yearlong hiatus. That's why every Vanleigh RV is made knowing that our customer's journey is their home.



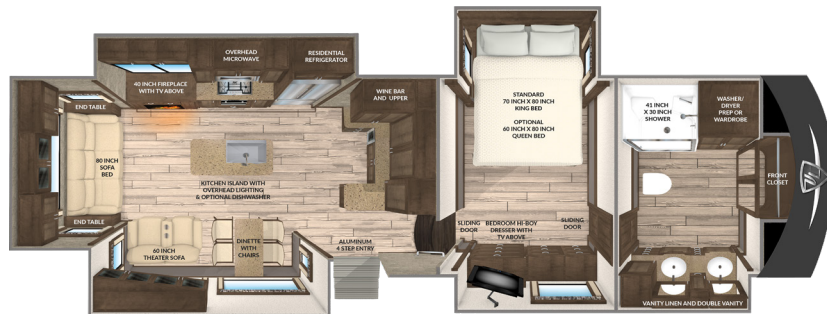
VILANO



Length: 34'8" Hitch Weight: 2,600 Dry Weight: 12,420 GVWR: 16,000



Length: 39' Hitch Weight: 3,100 Dry Weight: 14,100 GVWR: 16,000



Length: 39' Hitch Weight: 3,100 Dry Weight: 14,000 GVWR: 16,000

320GK

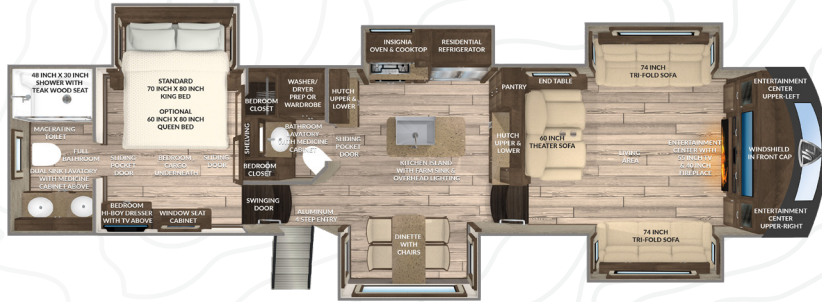
GOURMET KITCHEN VILANO

369FB

FRONT BATH VILANO

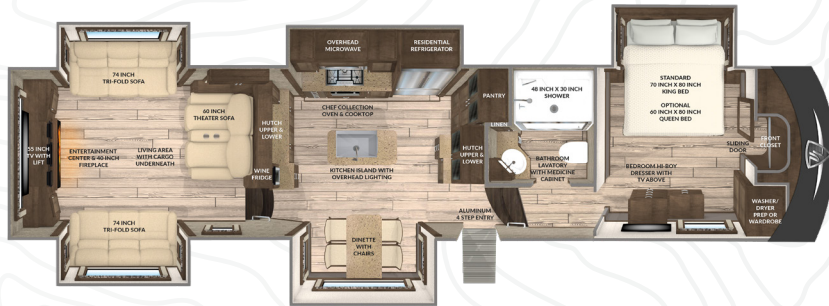
370GB

GRAND BAR VILANO



Length: 42'6" Hitch Weight: 3,300 Dry Weight: 15,800 GVWR: 18,500

377FL
FRONT LIVING VILANO



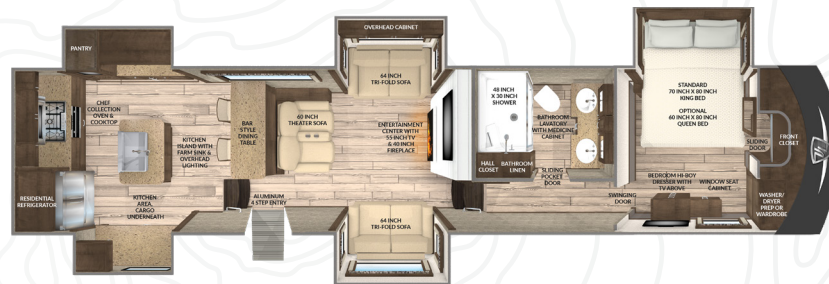
Length: 42'6" Hitch Weight: 3,500 Dry Weight: 15,100 GVWR: 18,500

385RD
REAR DEN VILANO



Length: 42'6" Hitch Weight: 2,900 Dry Weight: 14,400 GVWR: 18,500

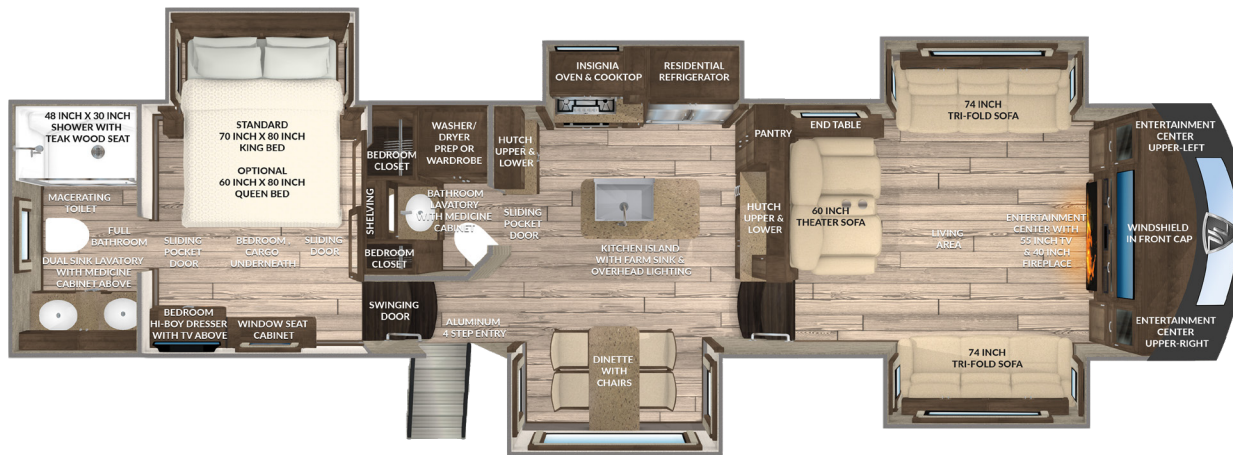
390LK
LIVING KITCHEN VILANO



Length: 42'6" Hitch Weight: 3,000 Dry Weight: 14,995 GVWR: 18,500

394RK
REAR KITCHEN VILANO

377FL



Shown in English Chestnut

The 377 Front Living puts entertainment and relaxation right up front! With two full couches and a love seat, the 377FL provides more than enough space and comfort to watch the game with friends and family. The Kitchen and Master Suite provide all the same luxury amenities you expect from Vanleigh.

SPECIFICATIONS

- GVWR 18,500
- Dry Weight 15,800 *
- Cargo Carrying 2,700
- Hitch Weight 3,300 ****
- Width 101"
- Height 13'1" **
- Length 42'6" ***
- Fresh Water Cap. 70 gal
- Grey Water Cap. 90 gal
- Black Water Cap. 45 gal
- Water Heater 10 gal
- Furnace 42K BTU
- LP Cap. 60 lbs

- * unloaded and based off of an average
- ** to top of A/Cs
- *** from pinbox to rear ladder based on standard build, no options
- **** unloaded and based off of an average





390LK

SPECIFICATIONS

- GVWR 18,500
- Dry Weight 14,400 *
- Cargo Carrying 4,100
- Hitch Weight 2,900 ****
- Width 101"
- Height 13'1" **
- Length 42'6" ***
- Fresh Water Cap. 70 gal
- Grey Water Cap. 90 gal
- Black Water Cap. 45 gal
- Water Heater 10 gal
- Furnace 42K BTU
- LP Cap. 60 lbs



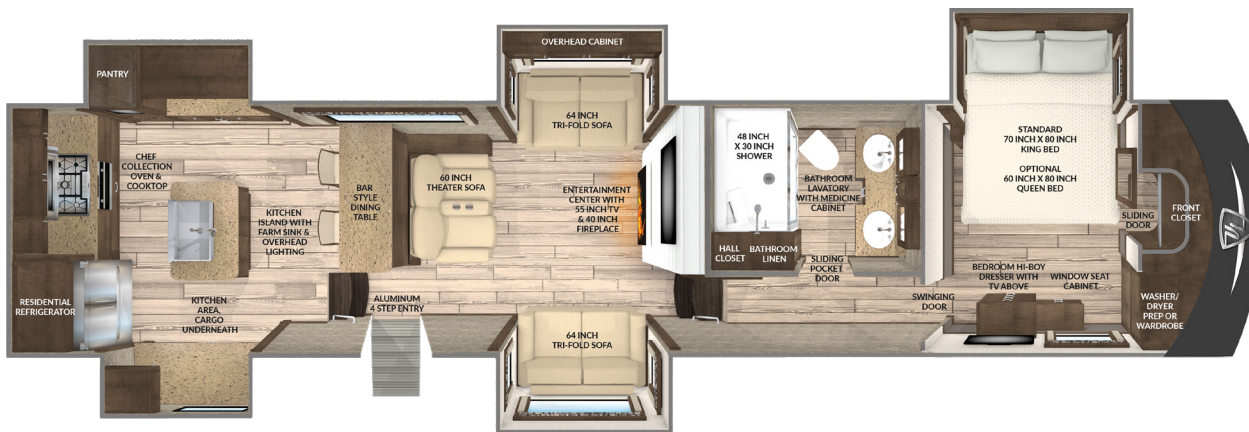
- * unloaded and based off of an average
- ** to top of A/Cs
- *** from pinbox to rear ladder based on standard build, no options

The all new 390 Living Kitchen Vilano takes living space to a whole new level. You'll feel right at home in this Vilano, which offers one full bathroom and a half bathroom, plenty of storage and counterspace in the kitchen. You'll feel like you have endless space to stretch your legs out during a long trip. We've also added additional cabinet space to the living galley, a fireplace to the bedroom suite and a half bath to accommodate whomever you happen to be entertaining.



Shown in White Linen

394RK



SPECIFICATIONS

- GVWR 18,500
- Dry Weight 14,995 *
- Cargo Carrying 3,505
- Hitch Weight 3,000 ****
- Width 101"
- Height 13'1"***
- Length 42'6"***
- Fresh Water Cap. 70 gal
- Grey Water Cap. 90 gal
- Black Water Cap. 45 gal
- Water Heater 10 gal
- Furnace 42K BTU
- LP Cap. 60 lbs

- * unloaded and based off of an average
- ** to top of A/Cs
- *** from pinbox to rear ladder based on standard build, no options
- **** unloaded and based off of an average



Shown in White Linen

The 394 Rear Kitchen maximizes available living space in a way that gives all the comforts of home in an innovative new floorplan. From the elevated rear Kitchen with generous counterspace, to the comfortable Living Area and Bedroom Suite, this Vilano gives you room to spread out.



320GK



Shown in White Linen

369FB



Shown in Amber Glaze

370GB



Shown in White Linen

385RD



Shown in Amber Glaze



LIVING AREA

- Full Profile Ceiling Throughout
- Hardwood Cabinetry and Faceframes
- Hardwood Slide-Out Fascia Throughout
- Hardwood Window Valances
- 8'0" Main Floor Slide-Out Boxes
- Spyder Multiplex Wiring System w/ Digital Home Screen
- Soft Touch Vinyl Ceiling
- Recessed LED Ceiling Lighting
- Roller Shades (Night)
- Diming Function on Main Living and Bedroom Area Lighting
- High Quality Residential Franklin Furniture, Made in the U.S.A.
- Ceiling Fan
- Dirt Devil Central Vacuum System

KITCHEN

- Solid Surface Countertops
- Stainless Steel Full Basin Farm Sink
- Residential Kitchen Faucet with Pull Down Sprayer
- Stainless Steel Convection Microwave
- Insignia Residential Style Oven
- LG Residential Refrigerator
- 1,000 Watt Pure Sine Wave Inverter (N/A on Gas/Elec. Fridge)
- Soft Close Doors and Drawers
- Freestanding, Solid Surface Dinette Table with 4 Chairs
- Automatic Ceiling Vent Fan in Galley
- Hardwood Ceiling Décor Package with Recessed LED Lighting
- Hand Laid Tile and Grout Backsplashes

HOME ENTERTAINMENT

- LG Smart TV
- Sound Bar with Surround Sound in Living Area
- Entertainment Center with Bluetooth, DVD, Aux. Controls.
- Dual Exterior Speakers
- Prewire for Solar Panels
- Winegard Air 360+ Antenna

Some interior furnishings not included. Some photos shown in literature have optional equipment. All options may not be available in every model. Because of progressive improvements, specifications, standard and optional equipment are subject to change without notice or obligation. For a complete and up-to-date list of available options and specifications, as well as VanLeigh's full line of RVs, visit vanleighrv.com.

BEDROOM

- LG Smart TV
- Dual USB Ports in Nightstands
- 70" x 80" Memory Foam King Mattress
- Solid Vinyl Flooring Throughout Bedroom
- Residential Hardwood Headboard
- Hardwood Dresser
- Full Sized Wardrobe with Motion Sensor Lighting
- Full Sized Storage Area Under Bed

HEATING AND COOLING

- Dual 15,000 BTU Air Conditioners
- Prewire for Third 15,000 BTU A/C with Triple Zone Thermostat
- Heat Pump on One A/C (Location Varies by Floor Plan)
- 16" Wide Return A/C Ducts for Max Airflow
- 42,000 BTU Furnace
- 7,200 BTU Electric Fireplace
- R-45 Floor and Roof Insulation
- Whisper Quiet A/C System
- Fully Enclosed and Heated Underbelly with Heat Return
- 12V Electric Tank Heaters
- 10 Gallon Gas/Electric Quick Recovery Hot Water Heater

EXTERIOR AND CONSTRUCTION

- 20 Mil Gel Coat Fiberglass
- Tubular Aluminum Framed Sidewalls
- 16" on Center Tubular Aluminum Flooring
- 16" on Center Aluminum Roof Joists
- 5-Sided Framed, Laminated, and Insulated Slide Boxes
- Aluminum A/C Boxes Welded to Frame
- Roof Backer for All Crown Molding
- Powder Coated Aluminum Wet Bay w/ Laser Etched Labeling
- 12V Electric Dump Valves for Black and Grey Tanks w/ Manual Override
- Dual Copper Water Manifolds
- Labeled Wire Harnesses
- Protective Wire Looms
- LED Exterior Lighting System
- Prewire for Backup Camera
- Slam-Latch Baggage Doors
- Motion Sensor Lighting in Pass-Through Compartment
- Electric Power Cord Reel
- Prewire for Traveler Satellite

OPTIONAL EQUIPMENT

- Slow Rise Solar Shades
- CPAP Stand
- Bar Style Dinette Table – STD 394RK
- Booth Dinette
- Upgraded LG Residential Refrigerator (w/ Ice & Water in Door)
- 4 Door Gas/Electric RV Fridge
- Hardwood Refrigerator Doors (N/A 394RK)
- Dishwasher (N/A 385RD & 377FL)
- Splendide Front Load Washer & Dryer
- 43" Bedroom TV (N/A 369FB, 370GB, & 377FL)
- 60" x 80" Memory Foam Queen Mattress
- 8K Axles w/ Drum Brakes (Incl. Westlake H Rated Tires) – STD 385RD, 394RK, 377FL, & 390LK
- 8K Axles w/ Disc Brakes (Incl. Westlake H Rated Tires)
- Goodyear "G" Rated Tires (For 7K Axles Only)
- Goodyear "H" Rated Tires (For 8K Axles Only)
- Generator Prep
- 5.5 Onan Marquis Gold LP Generator w/ Prep
- Truma "On-Demand" Water Heater
- 3rd 15,000 BTU A/C
- Additional Heat Pumps (Per A/C)
- 2nd Patio Awning
- Slide Awning Package
- Dual Pane Windows
- Exterior Lend-a-Hand Grab Handle
- Surge Guard
- Solar Prep
- 2" Receiver Hitch

WOOD FINISH/STAINS



Mocha



Amber Glaze



English Chestnut



White Linen





ALL WARRANTIES ARE NOT CREATED EQUAL.



See why ours stand the test. At Vanleigh, building a quality coach is our primary focus. Our warranty reflects our confidence in the construction of our unit. From the beginning phases of production we have pressurized water on our units. Throughout our production process we run systems checks on every component in the RV. Once your RV is completed it is taken outside to our onsite campground where it is hooked up to full services and put through an additional PDI inspection. We are proud to offer this accountability to our customers along with the following basic limited warranties:

3 YEAR CONSTRUCTION WARRANTY:

The structure of the welded frame of the RV is warranted for 3 years (36 months)

1 YEAR BASE LIMITED WARRANTY:

Your coach has a limited warranty against defects in materials and workmanship for 12 months of ownership

ONGOING OWNER SUPPORT

Vanleigh is proud to offer exceptional customer support. E-mail us at customercare@vanleighrv.com or call us at **662.331.2933**. We build our units with tested and proven components. Many of these components carry their own respective warranties. Please see owner's manual for the warranties of components.

BUILT AROUND YOU

We've always prided ourselves in putting our owners first. To build the best product and service it, with the same quality and care. It's at the core of who we are. We appreciate your consideration of Vanleigh.



VANLEIGH

A DIVISION OF TIFFIN

26 Industrial Drive | Burnsville, MS 38833
Phone 662-612-4040 | Fax 662-655-0913
www.vanleighrv.com

YOUR LOCAL VANLEIGH RV DEALER:

Colton RV
North Tonawanda, NY 14120
(716) 694-0188
(800) 628-4889
www.ColtonRV.com

Colton RV
Orchard Park, NY 14127
(716) 957-3250
(800) 628-4889
www.Coltonrv.com