

# Prism

By Coachmen



CLASS C MOTORHOMES

PRISM PROFILE

PRISM



# PRISM



## PRISM PROFILE INTERIOR FEATURES



24G

**Standard entertainment package** features a power wing jack antenna with a 12 volt LCD TV and 12 volt DVD/CD stereo with speakers and subwoofer to enjoy movies and music whether traveling or RVing.

**Modern kitchen** with 3-way refrigerator, 2-burner cooktop with glass cover, convection oven together with upgraded countertops, upgraded faucet with pullout sprayer and recessed composite sink.

**AM/FM/CD radio with built-in backup camera** These great features keep you aware of your surroundings and make parking a breeze. Sirius satellite and navigation available.

**Deluxe Fantastik climate controlled fan** in living room.

**Day/night roller shades** Easy to use, slow rise, rattle-free, heavy duty roller shades provide light blocking and light filtering.

**24G Island queen bed** at the push of a button is 60" wide and provides the comfort and convenience of a rear queen island bed in a motorhome under 25ft. 24J model includes an 80" long corner queen bed providing ample sleeping and comfort.

**3-way refrigerator** for the most efficient use of power while you RV. Operates on 110V, 12V or LP.

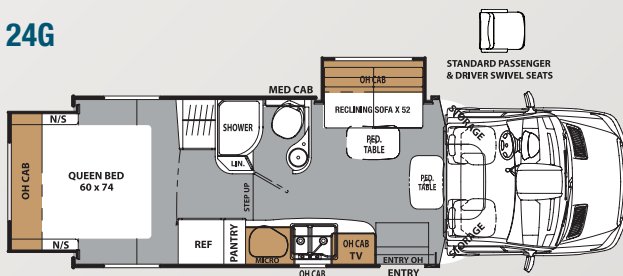
**Smart design bathroom** features standalone shower and maximum storage without sacrificing valuable living space.

**Standard recliner sofa** (24G) also has dual foot rest recliners for relaxing at the end of a day's travel.

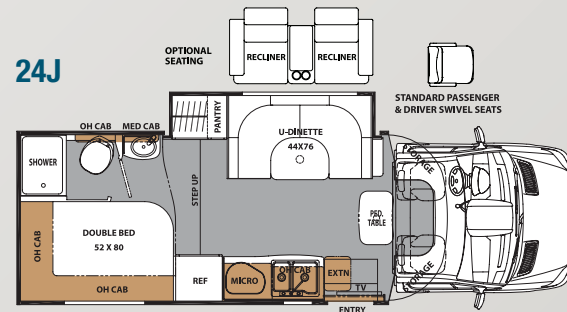
**Cockpit swivel seats** are standard on both the driver and passenger seats for added seating when parked.

**LED ceiling lighting** throughout for long life and efficient use of battery power.

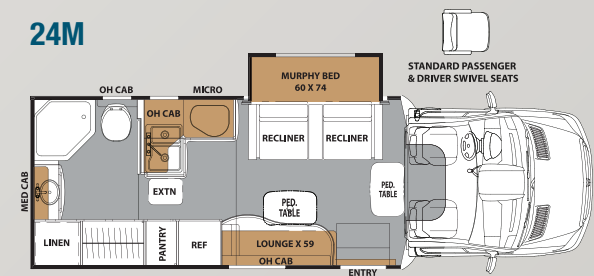
24G



24J



24M







24M



24G



24M



24G



24M

## PRISM PROFILE STANDARD AND OPTIONAL FEATURES

### STANDARD

#### WARRANTY

Motorhome – 12 mo./  
12,000 mile limited warranty  
Chassis Warranty – See Chassis  
Owners Manual  
Travel Easy Roadside Assistance

#### EXTERIOR/CONSTRUCTION/ CHASSIS

Deluxe Chassis Package  
Upgraded Leatherette Cockpit Seats  
Driver & Passenger Air Bags  
Cruise Control  
Tilt Steering Wheel  
Dash Air Conditioning  
Power Windows & Locks  
Exterior Upgraded Mirrors w/Remote  
Azdel "Super Lite" Composite Sidewall  
Vacu-Bond Laminated 2" Aluminum Floor  
Vacu-Bond Laminated 2" Aluminum  
Sidewalls  
Vacu-Bond Laminated Crowned Aluminum  
Roof w/TPO Exterior Surface  
Vinyl Graphics Package  
Roto-cast Rear Warehouse Trunk Box  
w/Plasti-Cote Side Boxes  
LED Rear Storage Trunk Light  
Slam Latch Trunk Doors  
Molded Fiberglass Front Cap w/Sunroof  
& Shade & LED Accent Lighting  
Molded Fiberglass Rear Cap  
Fiberglass Running Boards  
Fiberglass Wheel Skirts  
Upgraded Exterior Range Vent  
Rear Exterior Roof Ladder (N/A 24G)  
Spare Tire  
Back-up Camera  
Towing Hitch w/7-way Plug  
Hellwig Swaybar

#### INTERIOR APPOINTMENTS

Serenity Ash Woodgrain Cabinetry  
Hardwood Cabinet Doors & Drawers Fronts  
Glass Insert Cabinet Doors (in Select Areas)  
Cabinet Hardware – Black  
Congoleum "Designer Series" Flooring  
Throughout  
Vinyl Soft Touch Ceiling  
U- Dinette (24J)  
Sofa w/Dual Recliner Foot Rests  
& Pedestal Table (24G)  
Power Reclining Chairs  
w/Center Console (24M)  
Contoured Lounging Chair (24M)  
Upgraded Seating Foam Pak & Sew Style  
Single Child Tether at Forward Facing  
Dinette (24J)  
Upgraded "Shaker Style" Bath Door  
Upgraded Slideout Facer Board  
Upgraded Interior Grab Handle  
at Entrance Door  
Vinyl Padded Up & Angle Pads  
Magazine Rack above Entrance Door  
(N/A 24J)  
Powered Fantastik Fan in Living Room Area  
Tinted Radius Slider Windows

### INTERIOR EQUIPMENT

Powered Jack Wing Antenna  
LP Leak Alarm  
Smoke Detector  
Carbon Monoxide Detector  
Fire Extinguisher  
Bedroom TV Prep (N/A 24M)  
24" LCD 12V TV w/DVD & Speakers  
Pre-wired for Satellite Dish Thru Coax Input

### GALLEY

Convection Oven  
Satin Nickel Kitchen Faucet w/Sprayer  
Kitchen Flip-up Countertop Extension (24J)  
Upgraded Decorative Kitchen  
Backsplash Panel  
High Resolution Laminate Countertops  
Double Bowl Kitchen Sink & Sink Cover  
Power Lighted Low Profile Range Hood

### BATH AND WATER

Water Works Panel with Winterization  
& Black Tank Flush  
Waste Termination Center Easy Access Door  
Exterior Shower  
Molded Plastic Shower Pan & Surround  
Shower Curtain & Curved Rod (24G)  
Glass Shower Door (24J)  
Satin Nickel Shower Head & Faucet  
Shower Skylight  
Single Bowl Bathroom Sink  
Satin Nickel Single Lever Bathroom Faucet  
Bathroom Vanity Mirror w/Makeup  
Light Bar  
Towel Ring, Toilet Paper Holder &  
Robe Hooks  
Porcelain Foot Flush Toilet  
Attwood 6-Gallon Gas DSI Water Heater  
Power Bath Vent Fan  
Demand Water Pump

### SLEEPING

Island Queen Bed w/Standard Mattress  
60" x 74" (24G)  
Corner Queen Bed w/Standard Mattress  
51" x 80" (24J)  
Power Murphy Bed w/Upgrade Mattress  
(24M)  
Bedsprad (24J)  
Nightstands (N/A 24M)  
Bedroom Privacy Curtain (24G, 24J)  
Padded Headboard (24J)

### ELECTRICAL/HEATING/AC

Bed Area 110V CPAP Ready Area  
& 12V/USB Charging Station  
Exterior Illuminated Acrylic Safety  
Grab Handle  
Exterior LED Patio Light  
Systems Command Center  
"Easy Access" Auxiliary Battery in Step-well  
Wall Mounted Thermostat  
GFI Circuits (Kitchen, Bathroom, Exterior)  
Dual Auxiliary Battery  
Auxiliary Battery Disconnect  
"Even Cool" Roof Air Ducting System  
15,000 BTU Low Profile Ducted Roof  
Air Conditioner  
20K BTU Ducted Furnace  
30 Amp Power Cord  
55 Amp Electronic Converter

### OPTIONAL

#### STAND ALONE OPTIONS

24" LCD TV w/DVD – Bedroom (N/A 24M)  
Exterior Camp Kitchen Table (N/A 24M)  
Upgrade Serta Mattress (24J)  
Upgrade Folding Mattress (24G)  
15,000 BTU Low-Profile Ducted Air  
Conditioner w/Heat Pump  
3.2 KW Onan Diesel Generator (w/Auto  
Transfer Switch)  
Camping Cozy Package  
(Dual Pane Tinted Windows,  
Tank Pads, Upper Tank Valves)  
Heated Tank Pads  
Side View Cameras  
Aluminum Rims  
Slideout Awning – Rear (24G – Must Select  
Side Slideout Awning)  
Slideout Awning – Side  
2-Point Hydraulic Jacks  
Fold Down Cabover Sleeping Bunk  
w/32" 12 V LCD TV  
Touch Screen Dash Radio w/Back-up  
Monitor & GPS Navigation

#### DÉCOR OPTIONS

Champagne  
Cobblestone  
Flagstone

#### BANNER PACKAGE (Mandatory Option)

Hi-gloss Color Infused "Carmel" Lamulux  
4000 Sidewalls  
Bluetooth Touch Screen Radio w/Back-up  
Monitor & Sirius Radio  
Power Awning w/Vinyl Weather Guard  
Exterior Solar Panel Connection ("Furrion"  
Solar Panel Sold Separate)  
Pop-up Kitchen Recept & USB Ports  
Stainless Steel Wheel Liners  
3.6 KW Onan LP Generator  
Roller Day/Night Window Shades  
Dometic Euro Style 3-way Refrigerator  
Euro Style 2-Burner Cook top w/Glass Cover  
LED Taillights & Running Lights  
LED Ceiling Lights Throughout  
Exterior Entertainment Center  
w/24" LCD TV, DVD & Stereo  
Wood Grain Dash  
Upgraded Swivel Driver & Passenger Seats  
Power Skylight/Roof Vent  
Roller Bearing Drawer Guides Throughout  
Rear Manual Stabilizer Jacks  
Exterior Windshield Privacy Cover

*Due to continuous improvement,  
Standards and Options subject  
to change without notice.*



## PRISM LE INTERIOR FEATURES



**Fully equipped kitchen with ample storage** Two door refrigerator/freezer, contemporary and durable deep bowl sink with high rise faucet, pantry with drawers, and pots and pans drawer for all your storage needs.

**Upgraded High Resolution** laminate countertops.

**Wrap around dinette** with seat belts at every occupancy seat.

**AM/FM/CD radio with built-in backup camera** with optional Sirius satellite and navigation. This great feature keeps you aware of your surroundings and makes parking a breeze.

**Comfortable sleeping** with the standard or optional upgraded Serta mattress provides more sleeping surface.

**Convenient cooking options** to compliment the way you live — your choice of a standard microwave or optional convection microwave.

**Day/night roller shades** Easy to use, slow rise, rattle-free, heavy duty roller shades provide light blocking and light filtering.

**12 Volt LCD TV & DVD** offers optimal viewing whether traveling or RVing (optional).

**Coachmen's Even Cool A/C with radius-cornered Amoco insulated ducts** ensure maximum, consistent air flow.

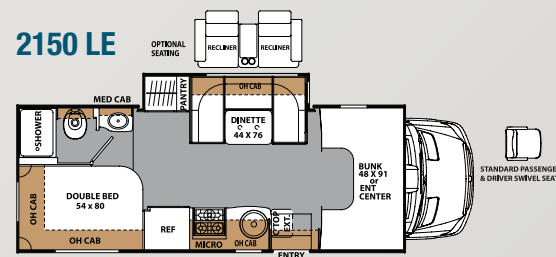
**Designer flooring** has a contemporary look with non-skid surface that resists cold-cracking.

**Cabover bunk** is 48"x91" making it comfortable for slumber and extra storage space when not in use, including a child safety net and ladder.

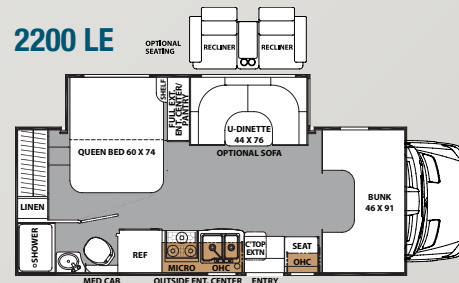
**Slide-in-a-Slide** (2200) provides mid-ship TV viewing and bedroom privacy.



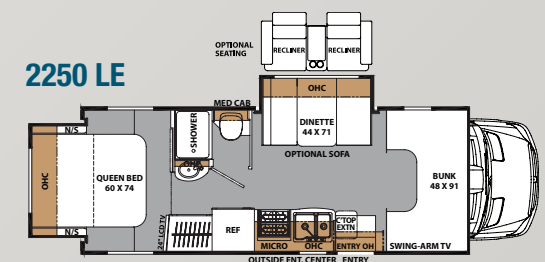
2150 LE



2200 LE



2250 LE





# PRISM LE STANDARD AND OPTIONAL FEATURES

## STANDARD

### WARRANTY

Motorhome - 12 mo./  
12,000 mile limited warranty  
Chassis Warranty - See Chassis  
Owners Manual  
Travel Easy Roadside Assistance

### EXTERIOR/CONSTRUCTION/ CHASSIS

Deluxe Chassis Package  
Driver & Passenger Air Bags  
Cruise Control  
Tilt Steering Wheel  
Dash Air Conditioning  
Power Windows & Locks  
Exterior Upgraded Mirrors w/Remote  
Azdel "Super Lite" Composite Sidewall  
Vacu-Bond Laminated 2" Steel Floor  
Vacu-Bond Laminated 2" Aluminum  
Sidewalls  
Vacu-Bond Laminated Crowned  
Aluminum Roof  
w/TPO Exterior Surface  
Vinyl Graphics Package  
Roto-cast Rear Warehouse Trunk Box  
w/Plasti-Cote Side Boxes  
Power Double Entrance Step  
Upgraded Exterior Range Vent  
Rear Steel Tube Bumper  
Hellwig Swaybar  
Back-up Camera

### INTERIOR APPOINTMENTS

Serenity Ash Woodgrain Cabinetry  
Hardwood Cabinet Doors  
& Drawers Fronts  
Glass Insert Cabinet Doors  
(in Select Areas)  
Cabinet Hardware - Black  
Congoleum "Designer Series" Flooring  
Throughout

U-Dinette (2150LE, 2200LE)  
Booth Dinette (2250LE)  
Single Child Tether at Forward  
Facing Dinette  
Upgraded "Shaker Style" Bath Door  
Interior Safety Grab Handle  
by Entrance Door  
Vinyl Padded Up & Angles  
Tinted Radius Slider Windows -  
Safety Glass

### INTERIOR EQUIPMENT

Jack Wing TV Antenna  
LP Leak Alarm  
Smoke Detector  
Carbon Monoxide Detector  
Fire Extinguisher  
Bedroom TV Prep (N/A 2200LE)  
Power Slideout Entertainment Center  
w/ Swivel 32" LCD TV, Stereo,  
Speakers, Sound Bar, Pantry

### GALLEY

Residential Size Microwave Oven  
Flush Mount, Double Door Refrigerator  
w/Wood Grain Door Inserts  
Single Bowl Kitchen Sink w/Cover  
(2150LE)  
Double Bowl Kitchen Sink w/Cover  
(2200LE, 2250LE)  
Satin Nickel Kitchen Faucet  
High Resolution Laminate Countertops  
Power, Lighted Range Hood  
Kitchen Flip-up Countertop Extension  
Tile Wall Border

### BATH AND WATER

Water Works Panel  
w/Winterization & Black Tank Flush  
Waste Termination Center Easy  
Access Door  
Exterior Shower  
Molded Plastic Shower Pan & Surround  
Glass Shower Door

Satin Nickel Shower Head & Faucet  
Shower Skylight  
Single Bowl Bathroom Sink  
Satin Nickel Single Lever  
Bathroom Faucet  
Bathroom Medicine Cabinet & Vanity Mirror  
Towel Ring, Toilet Paper Holder  
& Robe Hooks  
Porcelain Foot Flush Toilet  
Attwood 6-Gallon Gas DSI Water Heater  
Power Bath Vent Fan  
Demand Water Pump

### SLEEPING

Full Bed w/Standard Mattress  
54" x 80" (2150LE)  
Queen Bed w/Standard Mattress  
60" x 74" Flip Over (2250LE, 2200LE)  
Bedsprad  
Privacy Drape - Lower Cab  
Privacy Drape - Bedroom  
(2150LE, 2200LE)  
Bedroom Slider Door (2250LE)  
Privacy Drape & Track Cover - Cabover  
Cab over Bunk 48" x 90"  
Child Safety Net & Ladder  
(N/A w/Front Entertainment Center)

### ELECTRICAL/HEATING/AC

Bed Area 110V CPAP Ready Area  
& 12V USB Charging Station  
Exterior TV Ready Compartment  
Exterior LED Patio Light  
Systems Command Center  
"Easy Access" Auxiliary Battery in  
Step-well  
Wall Mounted Thermostat  
GFI Circuits (Kitchen, Bathroom, Exterior)  
Auxiliary Battery  
Auxiliary Battery Disconnect  
"Even Cool" Roof Air Ducting System  
(N/A 20CB, 21QB)  
13,500 BTU Ducted Roof Air Conditioner  
20,000 BTU Ducted Furnace

Onan 3.6KW LP Generator  
Exterior Solar Panel Connection  
("Furrion" Solar Panel Sold Separate)  
30 Amp Power Cord  
55 Amp Electronic Converter

## OPTIONAL

### STAND ALONE OPTIONS

24" LCD TV w/DVD - Coach (N/A 2200LE)  
13.5" LCD TV w/DVD - Bedroom  
(N/A 2200LE)  
Front Entertainment Center - 32" LCD TV,  
DVD & Stereo (N/A 2200LE)  
Exterior Entertainment Center  
w/24" LCD TV, DVD & Stereo  
Touch Screen Dash Radio w/Back-up  
Monitor & GPS Navigation  
Upgrade Serta Mattress (2150LE)  
Upgrade Folding Mattress  
(2250LE, 2200LE)  
Convection Microwave  
Sofa & Pedestal Table (in Place of Dinette)  
Dual Recliners (in Place of Dinette)  
Power Vent Fan - Cabover  
Heated Holding Tanks  
Dual Auxiliary Coach Batteries  
Exterior Windshield Cover  
Camping Cozy Package  
(Dual Pane Tinted Windows,  
Tank Pads, Upper Tank Valves)  
2-Point Hydraulic Jacks  
3.2 KW Onan Diesel Generator  
(w/Auto Transfer Switch)

### DÉCOR OPTIONS

Champagne  
Cobblestone  
Flagstone

## INTERIOR DÉCOR PRISM AND PRISM LE



CHAMPAGNE



COBBLESTONE



FLAGSTONE

## EXTERIOR OPTIONS

### STANDARD COLOR INFUSED FIBERGLASS



(Also available with painted color match cab)

### OPTIONAL FULL BODY PAINT



RED COBALT



BLUE COBALT



### LEAD DOG PACKAGE (Mandatory Option)

Hi-gloss Color Infused "Carmel" Lamulux  
4000 Sidewalls  
Bluetooth Touch Screen Radio  
w/Back-up Monitor & Sirius Radio  
Power Awning w/Vinyl Weather Guard  
LED Taillights & Running Lights  
LED Ceiling Lights Throughout  
Pop-up Kitchen Recept & USB Ports  
Stainless Steel Wheel Liners  
3.6 KW Onan LP Generator  
3,500 lb. Towing Hitch w/7-way Plug  
Rear Exterior Roof Ladder (N/A 2250LE)  
Spare Tire  
Upgraded Swivel Driver & Passenger Seats  
Roller Bearing Drawer Guides Throughout  
Attwood 3-Burner Cooktop w/Oven  
Child Safety Net & Ladder  
(N/A w/Front Entertainment Center)  
Roller Day/Night Window Shades

*Due to continuous improvement,  
Standards and Options subject  
to change without notice.*



# PRISM PROFILE EXTERIOR FEATURES

Features A through E shown below available on Prism 24G, 24J and 24M:

- A** Sirius satellite and navigation optional with AM/FM/CD radio and backup monitor with dash speakers. **B** LED interior lights. **C** Skylight bonded into molded front fiberglass cap. **D** Roller day/night shade provides privacy, blocks out light at night and helps keep your coach cool inside on warmer days.



## PRISM Exterior Features

- 1 The Mercedes Sprinter chassis is easy on fuel and on the eyes. It also delivers the great ride and driveability Mercedes is famous for.
- 2 A molded aerodynamically styled front cap with LED lights and angled wing walls reduces wind resistance and adds a polished automotive look.
- 3 Tinted windows block out the sun and the heat while adding a sleek exterior look.
- 4 The One Touch power awning is easy to open and close and comes with adjustable arms for more shade or rain water run off.
- 5 Beneath the stars or the full length awning, enjoy your favorite movies or music and fresh air at the same time with the outside entertainment system.
- 6 The exterior storage with upgraded slam latches provide you with multiple access doors to exterior storage space.
- 7 LED tail and marker lights for long-lasting safety.
- 8 Prepare meals and enjoy the family at the same time using the exterior camp table. (Optional)
- 9 Sleep safely and peacefully with the exterior privacy windshield cover.
- 10 Rear stabilizers create a secure and stable feeling within the motorhome.
- 11 Color-infused high gloss fiberglass with Azdel™ SuperLite substrate sidewalls are lightweight, durable and resistant to moisture. Virtually eliminates de-lamination.



11



**Not Pictured:** 20-gallon (85 lbs.) LP tank is larger than the competition.



## PRISM MOTORHOMES

Whether exploring on a weekend getaway or traveling across the country, Prism gets you there in style. It's the perfect marriage between experience, dependability and value from the Industry's premier maker with the economy and prestige of the Mercedes diesel chassis. The Prism is a luxurious, easy to drive, multi-use touring vehicle that provides unique styling and amenities. From the interior's solid surface counter tops, soft touch ceiling, residential flooring and versatile interior storage to the multiple access doors to exterior storage space, LED running lights, tinted windows and aerodynamic, stylish full fiberglass cap (Prism Profile Series), Prism is ideal for short or long trips. As one of the top selling brands in the nation, Coachmen has been providing generations a product they can rely on for over 50 years.

### PRISM LE Exterior Features

- 1 The Mercedes Sprinter chassis is easy on fuel and on the eyes. It also delivers the great ride and driveability Mercedes is famous for.
- 2 A power entry step automatically deploys and retracts when opening or closing the door allowing for easy entry and exit.
- 3 The One Touch power awning is easy to open and close and comes with adjustable arms for more shade or rain water run off.
- 4 Slide room awnings protect your slides from the elements and keep them free of debris.
- 5 3.6 KW Onan LP generator provides full power for tailgating or while dry camping.
- 6 Watch your favorite movies while still enjoying the fresh air with the outside entertainment system. (Optional)
- 7 The "warehouse" exterior storage provides you with a ton of exterior space that is great for both long and short term stays.
- 8 Sleep safely and peacefully with the exterior privacy windshield cover. (Optional)
- 9 Superior fresh water capacity – on average 20% more than the competition.
- 10 Color-infused high gloss fiberglass with Azdel™ Superlite substrate sidewalls are lightweight, durable and resistant to moisture. Virtually eliminates de-lamination.

**Not Pictured:** 20-gallon (85 lbs.) LP tank is larger than the competition.



Composite Sidewalls Made From...

**SuperLite**  
Greener By Design™

SuperLite® is a registered trademark of AZDEL, Inc.



# PRISM SPECIFICATIONS

MODEL	24J	24G	24M	2150 LE	2200 LE	2250 LE
Chassis	3500 Sprinter	3500 Sprinter	3500 Sprinter	3500 Sprinter	3500 Sprinter	3500 Sprinter
Engine	V6 3.0L	V6 3.0L	V6 3.0L	V6 3.0L	V6 3.0L	V6 3.0L
Horse Power	188	188	188	188	188	188
Torque	325	325	325	325	325	325
Wheel Base	170"	170"	170"	170"	170"	170"
GVWR (lbs.)	11,030	11,030	11,030	11,030	11,030	11,030
GCWR (lbs.)	15,250	15,250	15,250	15,250	15,250	15,250
UVW (approx. lbs.)	9,458	9,305	9,463	9,645	9,834	9,757
CCC (approx. lbs.)	1,572	1,725	1,560	1,385	1,196	1,273
GAWR Front (lbs.)	4,410	4,410	4,410	4,410	4,410	4,410
GAWR Rear (lbs.)	7,720	7,720	7,720	7,720	7,720	7,720
Interior Height	6' 7"	6' 7"	6' 7"	6' 10"	6' 10"	6' 10"
Exterior Width	7' 7"	7' 7"	7' 7"	7' 11"	7' 11"	7' 11"
Exterior Height (with A/C)	10' 8"	10' 8"	10' 8"	11' 7"	11' 7"	11' 7"
Exterior Length (with Hitch)	24' 10"	24' 10"	24' 10"	25' 0"	25' 0"	25' 0"
Hitch Weight (lbs.)	3,500	3,500	3,500	3,500	3,500	3,500
Fuel Capacity (gal.)	26	26	26	26	26	26
LP Capacity (lbs.)	85	85	85	85	85	85
Fresh Water Capacity (gal.)	30	30	35	50	38	43
Water Heater Capacity (gal.)	6	6	6	6	6	6
Grey Tank Capacity (gal.)	28	29	28	28	28	29
Black Tank Capacity (gal.)	32	28	32	28	28	27
Exterior Storage (cu. ft.)	42	41	33	88	52	52
Awning Length	15'	15'	13' 6"	16'	16'	16'

**GVWR (Gross Vehicle Weight Rating)** is the maximum permissible weight of the unit when fully loaded. It includes all weights, inclusive of all fluids, occupants, cargo, optional equipment and accessories. For safety and product performance do NOT exceed the GVWR.

**GCWR (Gross Combined Weight Rating)** is the maximum permissible loaded weight of your motor home and any towed trailer or towed vehicle. Actual GCWR of this vehicle may be limited by the sum of the GVWR and the installed hitch receiver maximum capacity rating; see hitch rating label for detail.

**GAWR (Gross Axle Weight Rating)** is the maximum permissible weight, including cargo, fluids, optional equipment and accessories that can be safely supported by each axle.

**UVW (Unloaded Vehicle Weight)** \* is the typical weight of the unit as manufactured at the factory. It includes all weight at the unit's axle(s), including full fuel, all fluids and LP Gas. The UVW does not include cargo, fresh potable water, additional optional equipment or dealer installed accessories.

\*Estimated Average based on standard build optional equipment.

**CCC (Cargo Carrying Capacity)** \*\* is the amount of weight available for fresh potable water, cargo, passengers, additional optional equipment and accessories. CCC is equal to GVWR minus UVW. Available CCC should accommodate fresh potable water (8.3 lbs per gallon). Before filling the fresh water tank, empty the black and gray tanks to provide for more cargo capacity.

\*\* Estimated average based on standard build optional equipment

Each Coachmen motorhome is weighed at the manufacturing facility prior to shipping. A label identifying the unloaded vehicle weight of the actual unit and the cargo carrying capacity is applied to every Coachmen motorhome prior to leaving our facilities.

The load capacity of your unit is designated by weight, not by volume, so you cannot necessarily use all available space when loading your unit.

Actual towing capacity is dependent upon your particular loading and towing circumstances, which includes the GVWR, GAWR and GCWR as well as adequate trailer brakes. Please refer to the Operator's Manual of your vehicle for further towing information.



## Your PRISM Dealer

Colton RV  
3122 Niagara Falls Blvd  
North Tonawanda, NY 14120  
(716) 694-0188  
www.ColtonRV.com

Colton RV  
3443 Southwestern Blvd.  
Orchard Park, NY 14127  
(716) 957-3250  
www.Coltonrv.com



## Travel Easy™ Roadside Assistance

RVing is easier with Coachmen's Travel Easy™ Roadside Assistance provided FREE the first year of ownership to those who purchase a New Coachmen RV. Administered by Coach-Net, this service provides you with 24/7 operational, technical and emergency road service coverage. Also included is towing, fuel delivery, jump starts, lockout service, tire changes, mobile mechanic and unlimited technical assistance. Anywhere. Anytime. Travel Easy™ is the security of knowing that help is an easy phone call away.



## Free One Year Membership – Coachmen Owners' Association

Coachmen is proud to sponsor the largest manufacturer sponsored camping club in North America ... Coachmen Owners' Association (COA). COA provides a broad breadth of value propositions for our owners including: planned trips/ tours and rallies at bulk rate discounts, free trip routing, free campground directory, free Easy RVing magazine, theme park discounts, fuel discounts, mail forwarding, a dedicated COA web site, local and state club activities and Caravan Chapter membership opportunities. Most importantly, COA enhances the Coachmen ownership and RV lifestyle experience.

**Every new Coachmen RV buyer is eligible for a 1 Year FREE membership in the Coachmen Owners' Association. It all adds up to an easy ownership experience!**



**Forest River, Inc. encourages our customers to purchase their Forest River products from a local dealership whenever possible for the following reasons:**

It is the goal of Forest River, Inc. that all of our RV owners fully enjoy the RV experience and that customer satisfaction meets or exceeds their expectations!

- 1) Forest River, Inc. dealers are independently owned and operated businesses so priority service and scheduling is at their discretion and is often provided to customers that purchased their unit at that dealership.
- 2) Purchasing locally allows customers to establish meaningful relationships with a dealer, enhancing the RV experience through assistance with product questions, user tips or RV regulations for your state or country, and much more!
- 3) Canadian customers must meet requirements to bring an RV purchased out of the country to their home. These requirements may involve additional inspections and certifications, taxes and fees. Your local Canadian Dealer is a professional at meeting these requirements.
- 4) Scheduling timely warranty repairs and adjustments through a local dealership provides far greater flexibility and convenience to you, the customer!

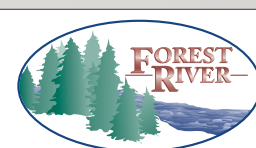


## Coachmen RV Owner "Digital Kit" App

Now you can have your Owners Manual with you wherever you are. Download our free App from iTunes and you'll have the information at your fingertips.



**Learn More**  
Scan this barcode using a QR Reader on your smart phone to learn more about Forest River.



A Berkshire Hathaway company.

All information contained in this brochure is believed to be accurate at the time of publication. However, during the model year, it may be necessary to make revisions and Coachmen reserves the right to make all such changes without notice, including prices, colors, materials, equipment and specifications as well as the addition of new models and the discontinuance of models shown in this brochure. Therefore, please consult with your Coachmen dealer and confirm the existence of any materials, design or specifications that are material to your purchase decision. 3/16

©Copyright 2016 Coachmen RV a Division of Forest River Inc. – All Rights Reserved.



Leader to the Great Outdoors.

423 N. Main Street • P.O. Box 30  
Middlebury, IN 46540

To learn more about Coachmen RV and our products and see how Coachmen is making the easy life easier, call us toll free at **(800) 353-7383**, or visit **www.coachmenrv.com**