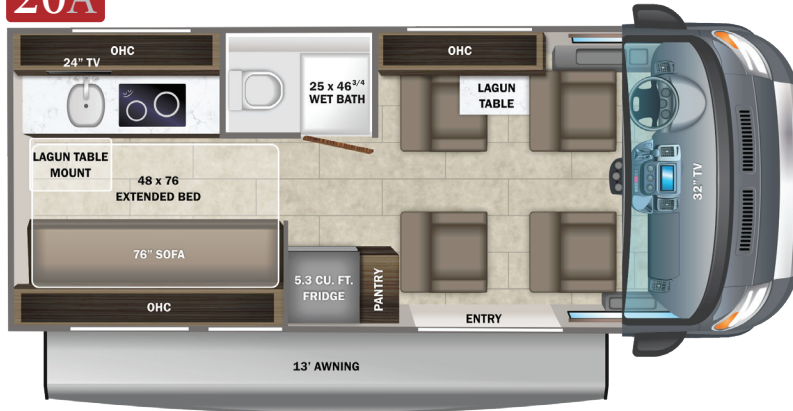
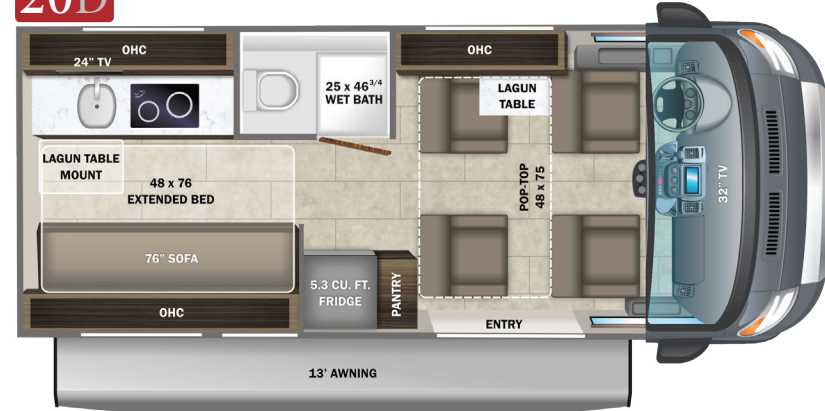


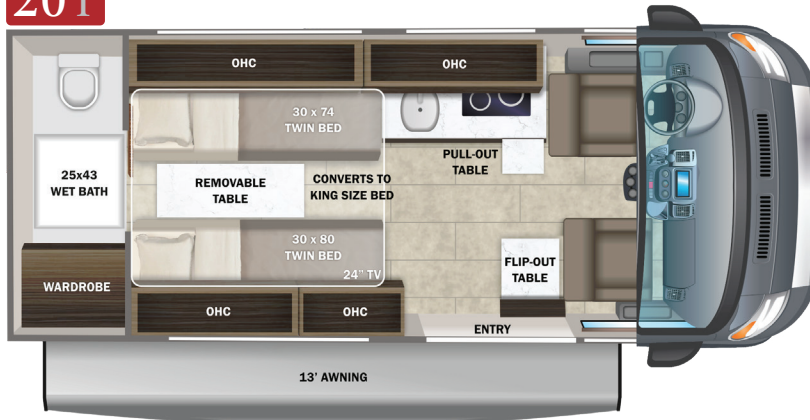
20A



20D



20T



Colton RV
489 Bushkill Plaza LN #9665
Wind Gap, PA 18091
(610) 863-5239
www.ColtonRV.com

INTERIOR DÉCOR

Autumn



EXTERIOR SELECTIONS



Silver Van



Graphite Van

CUSTOMER VALUE PACKAGE

E-Z DRIVE™: Hellwig helper springs, premium heavy-duty suspension
 Thule® armless patio awning with LED light strip
 Thule® roof rack with (3) cross members
 Truma Combi Eco Plus water heater and furnace
 Ultraleather® swivel driver and passenger seats with 6-way lumbar adjustment
 Winegard® Connect 2.0 4G/Wi-Fi/digital TV antenna

STANDARD EXTERIOR EQUIPMENT

RAM® ProMaster 3500 window van
 GVWR- 9,350 lb.
 GCWR- 11,500 lb.
 3.6L V6 24V VVT engine
 9-speed automatic 948TE transmission
 220 amp alternator
 Aluminum wheels
 Daytime running headlamps
 Power folding/heated side-view mirrors
 ParkSense® rear park assist system
 LT225/75R 16E tires
 3,500 lb. rear hitch receiver with dual 4/7 pin connector
 12V chassis battery
 24 gal. fuel tank (gas)
 Onan® 2,800W gas generator with auto gen start
 1,000W inverter
 30 amp electrical service with detachable power cord
 (2) 12V AGM house batteries
 190W solar panel with dual controller
 13,500 BTU Coleman®-Mach® 10 air conditioner
 6 gal. propane tank (20 lb.)
 LP quick-connect hookup
 Winterization drain system
 Black tank flush
 Gravity water fill (20T)
 12V demand water pump
 Water filtration system
 House battery disconnect switch
 Aqua View® SHOWERMISER™ water management system
 Sliding entrance door opening window
 Heated holding tanks (12V pads)

LED-lit running boards for cab and entry doors
 (2) 110V exterior outlets on each side of van
 Portable solar plug
 LED-lit holding tank valves
 Satellite prep
 Outside shower

STANDARD INTERIOR EQUIPMENT

10 in. Uconnect® infotainment center with GPS
 Power windows and door locks
 A/C and cruise control
 Backup camera
 Leather-wrapped tilt steering wheel with integrated controls
 Cab area privacy shade
 Remote keyless entry
 Custom-molded, vinyl-wrapped ABS interior wall panels
 Sliding screen door for entrance door
 Expandable table at entry door with safety grab handle (20T only)
 Soft-touch vinyl ceiling
 High-intensity LED ceiling lights
 Tecnoform® European-style, high-gloss cabinetry
 Ball-bearing drawer guides
 Residential vinyl flooring
 Firefly Multiplex system
 (4) sliding vented windows
 Decorative window valances with night roller shades
 Rear magnetic privacy shades
 Removable privacy shade for sliding door window
 Powered roof vent in living area
 (2) cab bucket seats (20A, 20D)
 32 in. front TV on drop-down bracket and 24 in. rear TV (20A, 20D)
 24 in. living area TV on swivel bracket (20T)
 BOSS® dual-zone radio with Bluetooth®, DVD and remote
 Cable TV hookup with RG-6 coax
 Collapsible dinette table
 5.3 cu. ft. AC/DC refrigerator (20A, 20D)
 3.1 cu. ft. AC/DC refrigerator (20T)
 2-burner cooktop with flush glass cover
 Convection microwave
 Stainless steel sink with glass cover and kitchen accessories

Solid-surface kitchen countertop with pull-out extension
 Pop-up 110V/USB outlet in kitchen
 (2) twin-size beds with adjustable headrests, Froli® sleep system and filler cushion to convert to king-size bed (20T only)
 Under-bed storage (20T only)
 48 in. x 76 in. convertible sofa bed (20A, 20D)
 Bathroom wardrobe with drawers
 Shower with magnetic curtain surround
 Toilet with foot flush
 Medicine cabinet with mirror
 Powered roof vent in bathroom
 Seatbelts for driver/passenger seats and select cab locations
 Driver and passenger airbags
 Smoke alarm
 Carbon monoxide detector
 Fire extinguisher

WARRANTY



At Entegra Coach, we build our RVs to handle every adventure, then back them with an outstanding warranty. Our 2-year limited warranty has you covered for 2 camping seasons. That's 730 days. For a copy of our 2-year limited warranty with complete terms and conditions, please contact your local Entegra Coach dealer.

Floorplan	GVWR (lbs.)	GCWR (lbs.)	Wheel Base	Overall Length	Exterior Height w/ A/C & Satellite	Exterior Width	Interior Height	Fresh Water Capacity (gal.)	Grey Waste Water Capacity (gal.)	Black Waste Water Capacity (gal.)
20A	9,350	11,500	159	20' 11"	9' 3"	83	74	25	16/17	12
20D	9,350	11,500	159	20' 11"	9' 3"	83	74	25	16/17	12
20T	9,350	11,500	159	20' 11"	9' 3"	83	74	27	14.5	13

It is important for your safety and enjoyment that you are aware of the weights and tow ratings of the RV you select. Consult a competent advisor for questions or advice. Whether you are new to RVing or a veteran, get a feel for the performance of your RV before heading out on the roadways. When you tow a vehicle with your RV, you must drive differently than when you drive a single vehicle. Practice hooking up, driving, backing up and braking in a safe environment or seek out professional instruction. Jayco affixes a weight label to each RV which lists weight information for that vehicle. Refer to that label to verify the vehicle will meet your requirements. Gross Vehicle Weight Rating (GVWR): The maximum permissible weight of the motorhome, including the Unloaded Vehicle Weight (UVW) plus passengers, personal items, all cargo, fluids, options and dealer-installed accessories. The GVWR is equal to or greater than the sum of the UVW and the Cargo Carrying Capacity. Gross Combined Weight Rating (GCWR): The maximum allowable combined weight of the motorhome used as a tow vehicle and the attached towed vehicle.