

# ALLEGRO RED

2021

TIFFIN





2021 ALLEGRO RED

MADE TO TAKE YOU MILES  
BEYOND THE ORDINARY.



37 BA with G3 White Mahogany



Handcrafted quality, luxury, and performance are all hallmarks of the acclaimed 2021 Allegro RED, a proven model in the Tiffin lineup. Its powerful Rear Engine Diesel (RED) delivers spirited performance wherever the road may take you, while the interior surrounds you with amenities. The 2021 RED is well-appointed with a full complement of entertainment, cooking and comfort features, and its multiple slide-out rooms and 7' ceilings take space to new heights. From front to back, the Allegro RED is a powerful, luxurious, and intuitive home you'll enjoy for years to come.

Clockwise from top: Living area; Cockpit; Bedroom; Passenger side dining bar. All interiors shown are 33 AA with Natural Alder cabinets, Dark Brew décor.





## Premium Paint System

Our eight-step full-body paint system features premium grade paints sealed with three layers of superclear coat with ultraviolet protection. An additional layer of high-performance film protects the front of the coach and select areas.



G3 GOLD CORAL



G3 NASA



G3 WATERFALL



G3 RUSTIC CANYON



G3 WHITE MAHOGANY

These other top-of-the-line features set the Allegro RED apart.

As an innovator in the RV industry, Tiffin Motorhomes has introduced many unique amenities to enhance your enjoyment of our coaches. Features may not be available on all models or floor plans. Please see specifications for details and more.

Clockwise from top: Driver side living area; Bedroom TV and optional stacked washer/dryer; Optional fireplace; Shower; Freightliner steering wheel. All interiors shown are 33 AA with Natural Alder cabinets, Dark Brew décor.



# Floor Plans



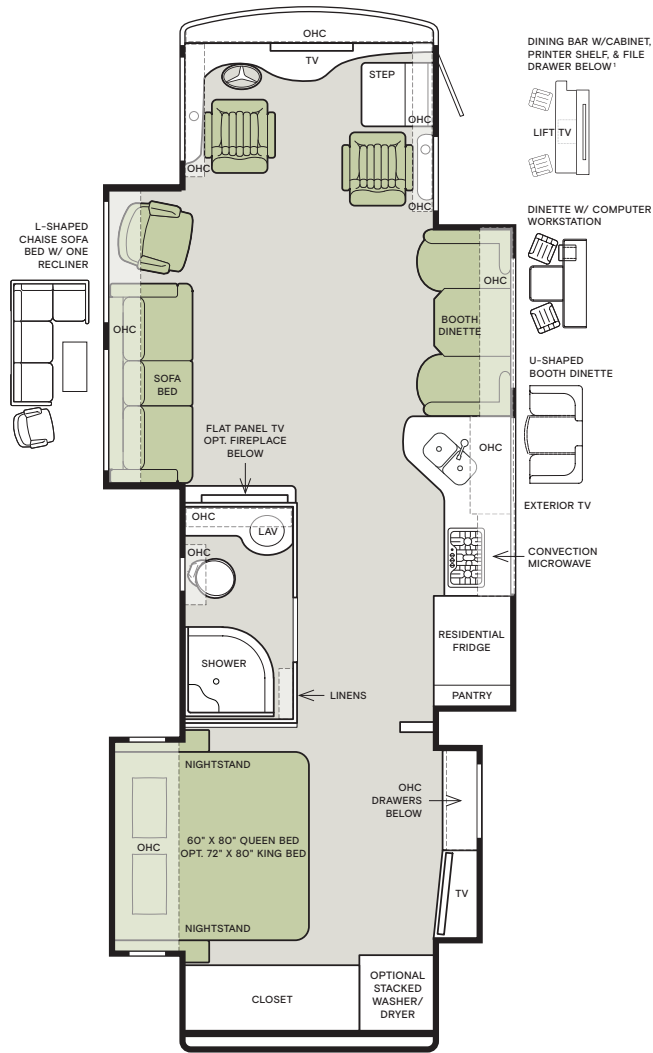
The design of every Allegro RED floor plan must meet four essential criteria: Maximum space, Optimal organization, Relaxation plus, and Elegant atmosphere. Tiffin's MORE Plans offer your family the most comfortable layout for life on the road.

If optional furniture combinations are selected, window locations may vary from diagram shown.

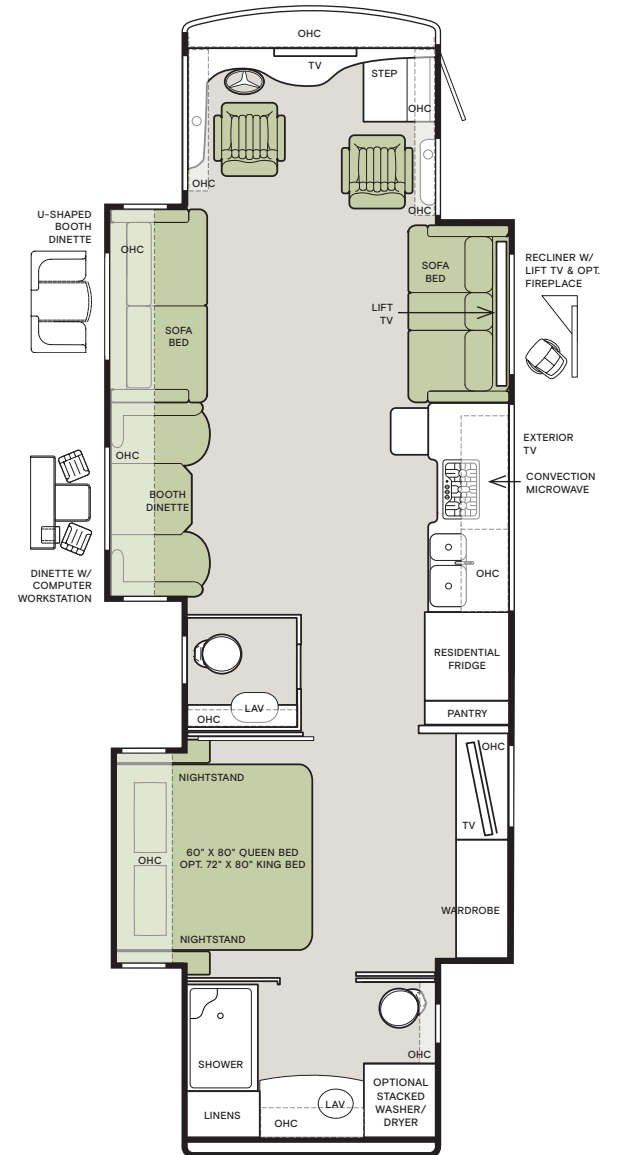
All options may not be available in every model. Because of progressive improvements and specifications, standard and optional equipment are subject to change without notice or obligation.

For a complete and up-to-date list of available options and specifications, visit [tiffinmotorhomes.com](http://tiffinmotorhomes.com).

## 33 AA



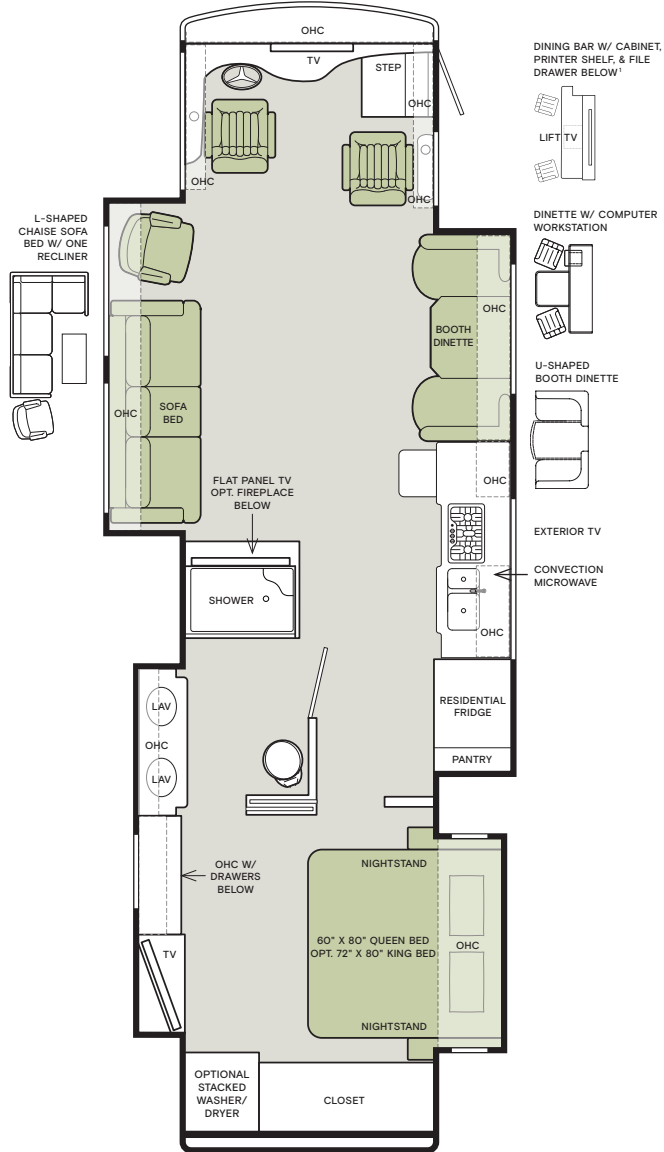
## 37 BA



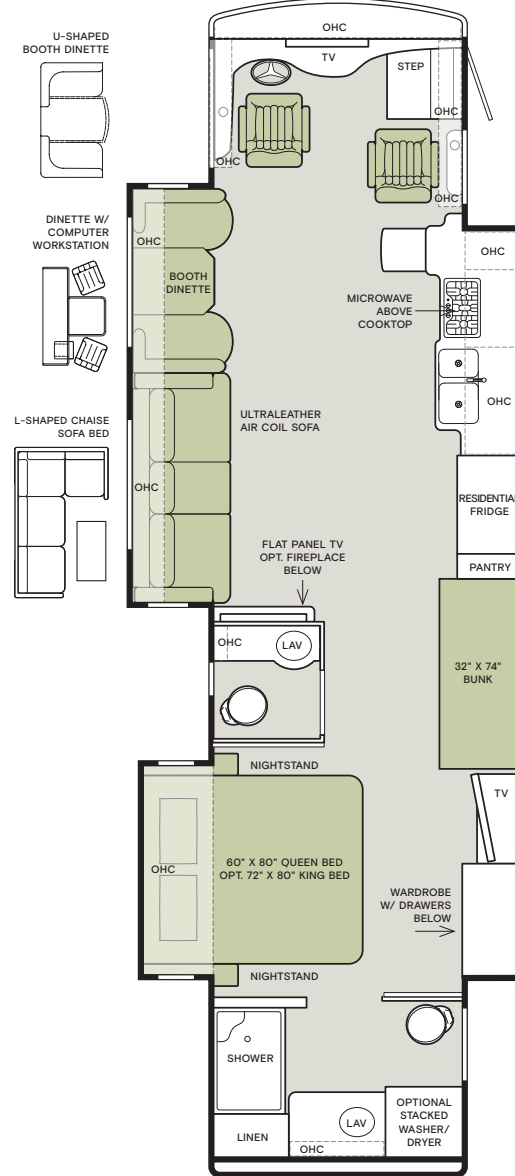
<sup>1</sup> Deletes the Overhead Cabinet in the Dining Area and the Mid-section TV



### 37 PA



### 38 KA



<sup>1</sup> Deletes the Overhead Cabinet in the Dining Area and the Mid-section TV

## Interior Décor

Make your experience on the road all your own. Express yourself by choosing the interior appointments such as cabinet finishes, flooring, and décor ensembles for every part of your motorhome. In the 2021 Allegro RED, you'll be able to go in style no matter where you go.

### CABINETS



AMBER GLAZED



NATURAL ALDER



MOCHA

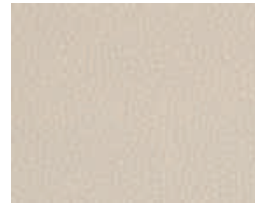
### ULTRALEATHER



BELGIAN



COCOON



WHITE MAPLE

### FLOOR TILE



VICINITY (S)

Matte Finish Tile



ARTICULO WHITE (O)

Matte Finish Tile

Because of progressive improvements and specifications, standard and optional equipment are subject to change without notice or obligation. For a complete and up-to-date list of available options and specifications, visit [tiffinmotorhomes.com](http://tiffinmotorhomes.com).

### DARK BREW



WINDOW TREATMENT



BACKSPLASH



COUNTERTOP



LIVING ROOM



MASTER SUITE



## SILVER LIGHT II



WINDOW TREATMENT



BACKSPLASH



COUNTERTOP



LIVING ROOM



MASTER SUITE

## URBAN PUTTY



WINDOW TREATMENT



BACKSPLASH



COUNTERTOP



LIVING ROOM



MASTER SUITE

## Specifications

### CHASSIS

- Freightliner® Rear Engine Diesel Chassis
- Cummins ISB 6.7
- Allison® 3000 MH 6-speed Automatic Transmission with Lock-up
- Peak Torque (lb – Ft. Max Net) 800 @ 1,800 RPM
- Peak HP 360 HP @ 2,600 RPM
- Raised Rail Chassis Frame
- Air Ride Suspension
- Full Air Brakes
- Exhaust Brake
- Four Aluminum Wheels
- Tire Pressure Monitoring
- Hydraulic Automatic Leveling Jacks

CHASSIS SPECIFICATIONS	33 AA	37 BA	37 PA	38 KA
GAWR—Front (lb)	12,400	12,400	12,400	12,400
GAWR—Rear (lb)	21,000	21,000	21,000	21,000
GVWR (lb)	33,400	33,400	33,400	33,400
GCWR (lb)	43,400	43,400	43,400	43,400
Wheel Base	198"	234"	252"	252"
Tire Size	275/80R22.5	275/80R22.5	275/80R22.5	275/80R22.5
Fuel Tank (gal.) — Dual Fuel Fill	100	100	100	100
DEF Tank (gal.) <sup>1</sup>	13	13	13	13
Alternator Amps	160	160	160	160
Hitch Rating (lb) <sup>2</sup>	10,000	10,000	10,000	10,000

<sup>1</sup> Diesel Exhaust Fluid (DEF) is the active component used in Selective Catalytic Reduction (SCR) engines to reduce nitrogen oxide emissions by 90% to meet EPA standards.

<sup>2</sup> Maximum Trailer Weight is dependent on the loading and towing variables which include the GVWR, GAWR and GCWR, as well as adequate trailer brakes.

### WEIGHTS AND MEASURES

	33 AA	37 BA	37 PA	38 KA
Overall Length (approximately) <sup>3</sup>	35' 2"	38' 6"	39'	39' 6"
Overall Height with Roof Air (maximum)	12' 10"	12' 10"	12' 10"	12' 10"
Interior Height	84"	84"	84"	84"
Overall Width <sup>3</sup>	101"	101"	101"	101"
Interior Width	96"	96"	96"	96"
Fresh Water (gal.)	90	90	90	90
Black Water (gal.)	50	50	50	50
Grey Water (gal.)	70	70	70	70
LPG Tank (gal; can only be filled to 80% capacity)	24	24	24	24
Basement Storage (cubic ft. — app.)	83.75	119	119	119
Minimum Garage Height	14'	14'	14'	14'

<sup>3</sup> The approximated coach width and length does not include side view mirrors and rear ladders.

### PLUMBING AND ELECTRICAL

- 8.0 kw Onan® Generator
- Two 15 K BTU Low-profile Roof ACs with Heat Pumps
- Heated Holding Tank Compartment
- Four 6 V House Batteries
- 50 Amp Service
- Black Holding Tank Flush System
- Exterior Rinse Hose/Shower
- Gravity Water Fill
- 110 V Exterior Receptacle
- Tank Level Monitor System
- Truma Gas Continuous Water Heater<sup>4</sup>
- 2000 Watt Sine Wave Inverter
- Extraordinaire™ AC System
- Spyder Multiplex System
- Digital TV Antenna
- Cable TV Ready
- External Tripod Satellite Hook-up

PLUMBING AND ELECTRICAL OPTIONS	33 AA	37 BA	37 PA	38 KA
All-electric Coach: Includes Aqua-Hot Hydronic Heating System with Continuous Hot Water	O	O	O	O
15 K A/C (Front- w/ Heat); 13.5 K A/C (Mid-No Heat); & 15 K A/C (Rear- w/ Heat)	—	O	O	O
Prep for Solar Panels	O	O	O	O
One Solar Panel	O	O	O	O
Three Solar Panels	O	O	O	O
CB Antenna	O	O	O	O
Wi-Fi Ranger	O	O	O	O
In-motion Satellite Dish <sup>5</sup>	O	O	O	O
Prep for Winegard® TRAVLER	O <sup>6</sup>	O	O	O

<sup>4</sup> Not available with All-electric option.

<sup>5</sup> High-definition programming is not available on a domed satellite antenna unless you subscribe to DISH Network®.

<sup>6</sup> In-motion Satellite Dish and Prep for Winegard TRAVLER cannot be optioned together on the 33 AA.

### EXTERIOR

- Fiberglass Front and Rear Caps
- Tinted One-piece Windshield
- Horizontal Mounted Wipers
- Chrome Heated Power Mirrors with Integrated Turn Signal
- Exterior Patio Light
- Power Patio Awning
- Automatic Entry Door Awning
- Awning(s) over Slide-outs
- Double Electric Step
- 1/4" Thick Single Pane Windows
- Convenient Access Doors with Gas Shocks
- Single Handle Lockable Storage Door Latches
- Undercoating
- Roof Ladder
- Exterior Storage Compartment Lights
- Full-body Paint
- Front Cap Protective Film
- Exterior Flat Panel TV
- Air Horns
- Mud Flap with Diffuser
- Charcoal Carpet Cargo Walls

EXTERIOR OPTIONS	33 AA	37 BA	37 PA	38 KA
Exterior Slide-out Tray <sup>7</sup>	O	O	O	O

<sup>7</sup> Exterior Slide-out Tray and Central Vacuum Cleaner cannot be optioned together on the 33 AA.



## INTERIOR

- High Gloss Raised Flat Panel Handcrafted Cabinet Doors
- Solid Wood Cabinet Fascias
- Soft Touch Vinyl Ceiling
- Flat Panel TV in Entertainment Center
- Sound Bar Sound System
- BluRay® Player
- Ceramic Tile Flooring in Living Room Area and Bath Area
- Treated Carpet and Fabrics
- Ball Bearing Drawer Slides
- Solar and Privacy Shades
- Power Roof Vents
- Smoke Detector
- Carbon Monoxide Detector
- LED Lighting
- LPG Leak Detector

INTERIOR OPTIONS	33 AA	37 BA	37 PA	38 KA
Central Vacuum Cleaner	O <sup>7</sup>	O	O	O
Stacked Washer/Dryer	O	O	O	O

DECOR OPTIONS	33 AA	37 BA	37 PA	38 KA
Handcrafted Cabinetry	Amber Glazed	O	O	O
	Mocha	O	O	O
	Natural Alder	O	O	O
Fabric Suites	Dark Brew	O	O	O
	Silver Light II	O	O	O
	Urban Putty	O	O	O
Floor Tiles	Vicinity (Matte Finish)	S	S	S
	Articulo White (Matte Finish)	O	O	O
Ultraleathers	Belgian	O	O	O
	Cocoon	O	O	O
	White Maple	O	O	O

<sup>7</sup> Exterior Slide-out Tray and Central Vacuum Cleaner cannot be optioned together on the 33 AA.

## DRIVER'S COMPARTMENT

- Tilt and Telescoping Steering Wheel
- Wood Drawers in Dash
- Lighted Instrument Panel
- CD Player and AM/FM Stereo
- 12 V Dash Receptacle
- Power Solar and Privacy Windshield Shades
- House Battery Disconnect Switch
- Power Step Well Cover
- USB Dash Receptacle
- Fire Extinguisher
- Manual Solar and Privacy Shades on Side Windows
- Adjustable Seatbelt Brackets
- Ultraleather Power Driver and Passenger Seats with Passenger Footrest
- Satellite-ready Radio (subscription required)
- Overhead Flat Panel TV
- Color Back-up Monitor

DRIVERS COMPARTMENT OPTIONS	33 AA	37 BA	37 PA	38 KA
In-dash Navigation System	O	O	O	O
Front Overhead Bunk	O	O	O	O
Vertical Slide Open Window on Passenger Side	O	O	O	O

## LIVING AREA/DINETTE OPTIONS:

	33 AA	37 BA	37 PA	38 KA
Ultraleather Booth Dinette/Sleeper on Passenger Side	S	—	S	—
Ultraleather Booth Dinette/Sleeper on Driver Side	—	S	—	S
Ultraleather U-shaped Dinette (Non-sleeper) on Passenger Side	O	—	O	—
Ultraleather U-shaped Dinette (Non-sleeper) on Driver Side	—	O	—	O
Dinette with Computer Workstation on Passenger Side	O	—	O	—
Dinette with Computer Workstation on Driver Side	—	O	—	O
Dining Bar with Lift TV on Passenger Side <sup>8</sup>	O	—	O	—
Ultraleather Air Coil Sofa and One Recliner on Driver Side	S	—	S	—
Ultraleather DE Sofa/Sleeper and Lift TV on Passenger Side	—	S	—	—
Ultraleather Recliner and Lift TV on Passenger Side	—	O	—	—
Ultraleather L-shaped Sofa and One Recliner on Driver Side	O	—	O	—
Ultraleather Air Coil Sofa on Driver Side	—	S	—	S
Ultraleather L-shaped Sofa on Driver Side	—	—	—	O
Fireplace on Driver Side	O	—	O	—
Fireplace on Passenger Side (only available with Ultraleather Recliner with Lift TV)	—	O	—	—
Bunk Beds (70" x 32") with Convertible Wardrobe on Passenger Side	—	—	—	S

<sup>8</sup> Deletes Mid-section TV and Overhead Cabinet above Dining Area.

## KITCHEN

- Residential Refrigerator
- Double Bowl Kitchen Sink with Single Lever Chrome Faucet
- Panoramic Galley Window
- Solid Surface Galley Countertop, Sink Cover, and Cooktop Cover
- 3-burner Cooktop with Convection Microwave

KITCHEN OPTIONS	33 AA	37 BA	37 PA	38 KA
Oven with Convection Microwave <sup>9</sup>	O	O	O	O
Dishwasher <sup>9</sup>	O	O	O	O
Expand-an-island	—	S	S	S

<sup>9</sup> Cannot option Dishwasher and Oven with Convection Microwave together.

## BEDROOM

- Wardrobe with Automatic Light
- Bed Comforter with Throw Pillows
- Flat Panel TV
- Memory Foam Queen Mattress (60" x 80")
- Solar/Privacy Shades
- Ceiling Fan

BEDROOM OPTIONS	33 AA	37 BA	37 PA	38 KA
Memory Foam King Bed Mattress (72" x 80")	O	O	O	O
Carpeted Flooring	S	—	S	—

## BATHROOM

- Medicine Cabinet
- Skylight and LED Light in Shower
- Molded One-piece Fiberglass Shower
- Solid Surface Vanity Top
- Roof Vent Fan

Because of progressive improvements and specifications, standard and optional equipment are subject to change without notice or obligation. For a complete and up-to-date list of available options and specifications, visit [tiffinmotorhomes.com](http://tiffinmotorhomes.com).



1

YEAR OR 12,000 MILES  
LIMITED WARRANTY

5

YEAR OR 50,000 MILES  
DELAMINATION  
LIMITED WARRANTY

10

YEAR OR 50,000 MILES  
UNITIZED CONSTRUCTION  
LIMITED WARRANTY

1

YEAR COACH  
ROADSIDE SERVICE

∞

ONGOING  
CUSTOMER SUPPORT

©2020 Tiffin Motorhomes, Inc. Allegro®, Allegro Breeze®, Allegro RED®, Phaeton®, Allegro Bus®, Zephyr®, Wayfarer®, Roughing It Smoothly®, Open Road®, PowerGlide®, and Pusher® are registered trademarks of Tiffin Motorhomes, Inc. All rights reserved.  
For all information concerning the limited warranty provided by Tiffin, please refer to the full written limited warranty set forth on the Tiffin website or held by our authorized dealerships. Please note, some interior furnishings not included.

Colton RV  
North Tonawanda, NY 14120  
(716) 694-0188  
(800) 628-4889  
[www.ColtonRV.com](http://www.ColtonRV.com)

Colton RV  
Orchard Park, NY 14127  
(716) 957-3250  
(800) 628-4889  
[www.Coltonrv.com](http://www.Coltonrv.com)

FOR PARTS & SERVICE CALL 256.356.0261 OR VISIT [TIFFINMOTORHOMES.COM](http://TIFFINMOTORHOMES.COM)

105 2ND ST NW RED BAY, AL 35582 [f](#) [t](#) [i](#) [p](#)