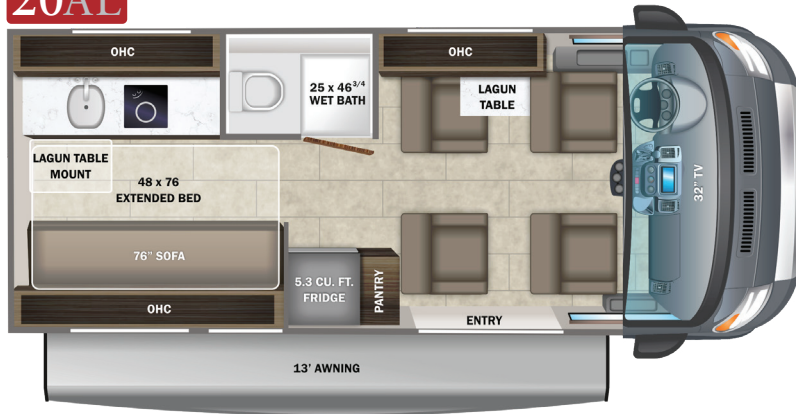
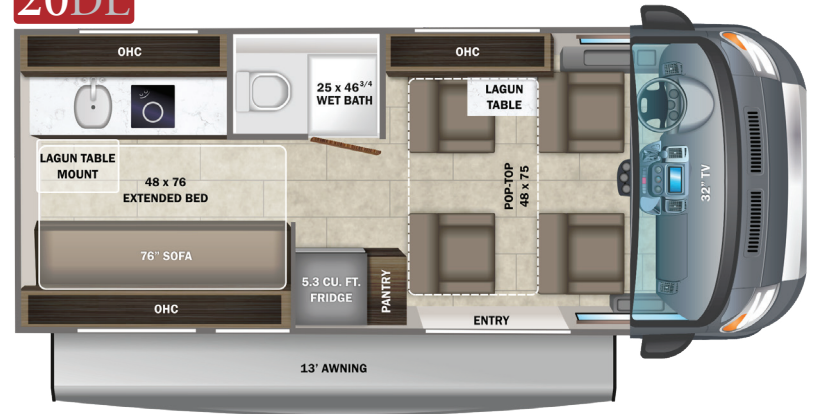


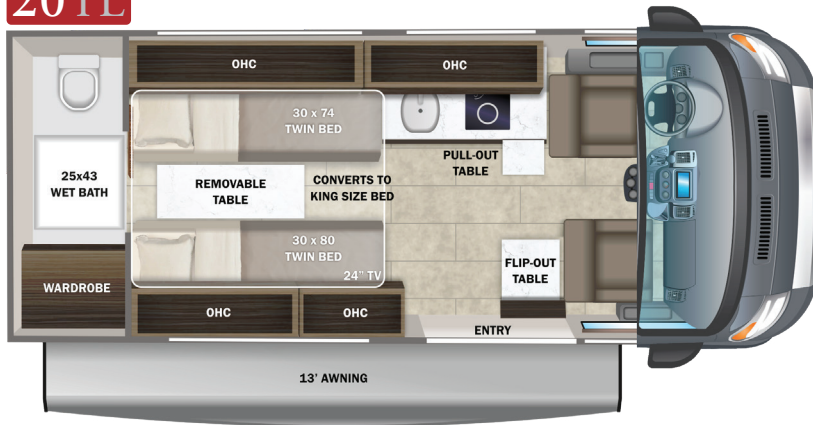
**20AL**



**20DL**



**20TL**



Colton RV  
489 Bushkill Plaza LN #9665  
Wind Gap, PA 18091  
(610) 863-5239  
[www.ColtonRV.com](http://www.ColtonRV.com)

EXTERIOR SELECTIONS



Graphite Van



Silver Van

## CUSTOMER VALUE PACKAGE

E-Z DRIVE™: Hellwig helper springs, premium heavy-duty suspension  
 Thule® armless patio awning with LED light strip  
 Thule® roof rack with (3) cross members  
 Induction cooktop  
 Timberline hydronic heating system  
 Swivel driver and passenger seats with 6-way lumbar adjustment  
 Winegard® Connect 2.0 4G/Wi-Fi/digital TV antenna

## STANDARD EXTERIOR EQUIPMENT

RAM® ProMaster 3500 window van  
 GVWR- 9,350 lb.  
 GCWR- 11,500 lb.  
 3.6L V6 24V VVT engine  
 9-speed automatic 948TE transmission  
 220 amp alternator  
 Aluminum wheels  
 Daytime running headlamps  
 Power folding/heated side-view mirrors  
 ParkSense® rear park assist system  
 LT225/75R 16E tires  
 3,500 lb. rear hitch receiver with dual 4/7 pin connector  
 12V chassis battery  
 24 gal. fuel tank (gas)  
 Heated holding tanks (12V pads)  
 LED-lit running boards for cab and entry doors  
 (2) 110V exterior outlets on each side of van  
 Portable solar plug  
 LED-lit holding tank valves  
 Satellite prep  
 Outside shower  
 48V - 210 amp hour smart lithium battery providing 10KW hours of power  
 3,500W inverter  
 2nd alternator (48V) dedicated to lithium battery  
 200W of roof-mounted solar panels  
 Slow charge solar panel for chassis battery  
 30 amp electrical service with detachable power cord

13,500 BTU 48V Coleman®-Mach® 10 air conditioner  
 Winterization drain system  
 Black tank flush  
 12V demand water pump  
 Water filtration system  
 House battery disconnect switch  
 Aqua View® SHOWERMISER™ water management system

## STANDARD INTERIOR EQUIPMENT

10 in. Uconnect® infotainment center with GPS  
 Power windows and door locks  
 A/C and cruise control  
 Backup camera  
 Leather-wrapped steering wheel with integrated controls  
 Cab area privacy shade  
 Remote keyless entry  
 Custom-molded, vinyl-wrapped ABS interior wall panels  
 Sliding screen door for entrance door  
 Expandable table at entry door with safety grab handle (20TL only)  
 Soft-touch vinyl ceiling  
 High-intensity LED ceiling lights  
 Tecnoform® European-style, high-gloss cabinetry  
 Ball-bearing drawer guides  
 Residential vinyl flooring  
 Firefly Multiplex system  
 Sliding vented windows  
 Decorative window valances with night roller shades  
 Rear magnetic privacy shades  
 Removable privacy shade for sliding door window  
 Powered roof vent in living area  
 (2) additional cab bucket seats (20AL, 20DL)  
 32 in. front TV on drop-down bracket (20AL, 20DL)  
 24 in. living area TV on swivel bracket (20TL)  
 Cable TV hookup with RG-6 coax  
 Collapsible dinette table  
 5.3 cu. ft. AC/DC refrigerator (20AL, 20DL)  
 3.1 cu. ft. AC/DC refrigerator (20TL)  
 Convection microwave  
 Stainless steel sink with glass cover and kitchen accessories  
 Solid-surface kitchen countertop with pull-out extension

Pop-up 110V/USB outlet in kitchen  
 (2) twin-size beds with adjustable headrests, Froli® sleep system and filler cushion to convert to king-size bed (20TL only)  
 Under-bed storage (20TL only)  
 48 in. x 76 in. convertible sofa bed (20AL, 20DL)  
 Bathroom wardrobe with drawers  
 Shower with magnetic curtain surround  
 Toilet with foot flush  
 Medicine cabinet with mirror  
 Powered roof vent in bathroom  
 Seatbelts for driver/passenger seats and select cab locations  
 Driver and passenger airbags  
 Smoke alarm  
 Carbon monoxide detector  
 Fire extinguisher

## WARRANTY



At Entegra Coach, we build our RVs to handle every adventure, then back them with an outstanding warranty. Our 2-year limited warranty has you covered for 2 camping seasons. That's 730 days. For a copy of our 2-year limited warranty with complete terms and conditions, please contact your local Entegra Coach dealer.

Floorplan	GVWR (lbs.)	GCWR (lbs.)	Wheel Base	Overall Length	Exterior Height w/ A/C & Satellite	Exterior Width	Interior Height	Fresh Water Capacity (gal.)	Grey Waste Water Capacity (gal.)	Black Waste Water Capacity (gal.)
20AL	9,350	11,500	159	20' 11"	9' 3"	83	74	21	16/17	12
20DL	9,350	11,500	159	20' 11"	9' 3"	83	74	21	16/17	12
20TL	9,350	11,500	159	20' 11"	9' 3"	83	74	18	14.5	13

It is important for your safety and enjoyment that you are aware of the weights and tow ratings of the RV you select. Consult a competent advisor for questions or advice. Whether you are new to RVing or a veteran, get a feel for the performance of your RV before heading out on the roadways. When you tow a vehicle with your RV, you must drive differently than when you drive a single vehicle. Practice hooking up, driving, backing up and braking in a safe environment or seek out professional instruction. Jayco affixes a weight label to each RV which lists weight information for that vehicle. Refer to that label to verify the vehicle will meet your requirements. Gross Vehicle Weight Rating (GVWR): The maximum permissible weight of the motorhome, including the Unloaded Vehicle Weight (UVW) plus passengers, personal items, all cargo, fluids, options and dealer-installed accessories. The GVWR is equal to or greater than the sum of the UVW and the Cargo Carrying Capacity. Gross Combined Weight Rating (GCWR): The maximum allowable combined weight of the motorhome used as a tow vehicle and the attached towed vehicle.