




SLOW DOWN. GOOD TIMES AHEAD.



 FLEETWOOD®

2008 BOUNDER



BOUNDER MAKES YOUR DOLLAR GO AS FAR AS YOU DO.

After all your years of hard work, now it's time to enjoy life. You want to travel, visit family and see friends. Bounder was made for you. It's a fully equipped motor home with the components, furnishings and features you need at a value price. In fact, it shares many of the features found in more expensive motor homes such as full-body paint, Ford® or Workhorse™ chassis, deluxe cabinet doors, and extra storage compartments. It's the motor home that makes your money go farther.

Quality



There's no cutting corners. Skilled craftsmen build every Fleetwood RV for maximum durability and longevity.



BOUNDER



THE COCKPIT is designed for your comfort and convenience during those long hours on the road. The gauges are easy to read, and controls are within easy reach. Even the Flexsteel® driver/passenger seats are designed to reduce fatigue on cross-country drives – and the optional Ultraleather™ is softer and easier to clean.



THE RECLINER (select models) is the ideal place to get lost in a book with a nice, cool glass of iced tea. Set your glass on the flip-up table next to your chair. For an extra touch of class, treat yourself to the optional Ultraleather™ covering.



THE ENTERTAINMENT SYSTEM features a 27" flat screen TV and spacious wood cabinetry to store other electronics. When visiting Tombstone, Arizona, you might watch "Gunfight at the O.K. Corral" for an entertaining history lesson! If you like high-def, an optional Samsung® 26" LCD HDTV is available.

Why Buy Bounder?





BOUNDER 35H shown in Cashmere interior décor with Plantation Cherry wood cabinetry.

More Value for Your Money

When you compare motor homes, Bounder gives you more for your dollar. It's packed with features and ready to go.

Maximum Functionality

Bounder is known as "The Motor Home That Really Works" because it provides straightforward functionality.

Built for Long Trips

Go right ahead and plan that cross-country journey. We built Bounder for extended travel.

Trusted Name

Bounder has been popular for more than 20 years, with sales unmatched by any other motor home brand.

Fully Equipped

Bounder provides the necessities for a comfortable, convenient, and safe journey. It includes many features standard that others consider optional.



COOK TO YOUR HEART'S CONTENT.

Bounder makes it easy to prepare a family meal, where key appliances are within easy reach and countertop space is abundant. These are just two examples of how Bounder delivers maximum functionality through smart design. But while cooks love the galley, it's also a great place to entertain friends and family. With plenty of floor space and roomy slide-outs, everyone can be comfortable.

Trust



More people trust Fleetwood. After all, we've spent over 50 years perfecting RVs, earning the loyalty of generations of RVers.



BOUNDER



THE DINETTE brings you a glorious sunset out the picture window to enjoy with your dinner. Afterwards, there's room for four to play dominoes. And you can store them conveniently underneath the seat, with the rest of your favorite games. When you've got an overnight guest, the dinette converts to an extra bed.

THE FULL EXTENSION DRAWERS allow you to store things at the very back. No storage space is wasted.





THE GALLEY is decked out with the appliances you need to whip up a meal for two...or twenty-two. And you have lots of countertop room for party trays – simply flip up the countertop extension shelf and slide in the range and sink covers for even more horizontal space.



THE CABINETRY is beautiful on the outside, smart on the inside. The shelves are adjustable, and lined so your dishes don't rattle in transit. Best yet, the cabinets are deep enough for full-sized plates so you don't have to eat off salad plates.



THE MICROWAVE warms up your coffee, pops popcorn and defrosts in a flash. If you like baking, try the optional convection microwave that bakes just like an oven and cooks like a standard microwave.

THE REFRIGERATOR stores so much food, you can host that family reunion. The Norcold® 4-door model (optional on select models) holds 12 cubic feet of food, with a roomy interior for party trays. Includes a handy icemaker to cool your drink on hot days.





REST ASSURED.

You can sleep well when you buy a motor home that's been proven for more than 20 years. The trailblazing Bounder set a new standard for motor homes over two decades ago, and is still one of the top-selling motor homes on the road. And Bounder is built by Fleetwood, a respected industry leader for more than 55 years. To top it all off, Bounder is backed by one of the most comprehensive warranties available. It's no wonder owners continue to be wild about Bounder.

Passion



We're truly passionate about the RV lifestyle. Fleetwood was founded by RV enthusiasts, and that tradition continues today.



BOUNDER



THE SHOWER has a low threshold – with one small step you're inside the roomy stall. The water temperature adjusts quickly, so you can avoid a cold shower. In fact, Bounder features a 10-gallon water heater, where many competitors only offer a 6-gallon heater.

THE BATHROOM gives you plenty of room to groom, especially in the 35H model (shown) with its long vanity. It's perfect for storing your toiletries and beauty supplies. To help you dry camp longer, both the porcelain toilet and the shower have a water saver feature.





THE BEDROOM SUITE provides plenty of room for relaxing, thanks to the bedroom slide-out on every model. But nothing's more relaxing than the inviting bed, with its queen-size Restonic® mattress. For even more cushiony acreage, some models offer an optional king-size bed.

THE SPACIOUS WARDROBE turns on a light when you open the door, so you can see your neatly organized clothing inside the cedar-lined closet. When the door is closed, you can double-check your outfit in the mirror. Below, fully extending drawers provide easy access to items at the very back.



THE VANITY (most models) acts as your bedroom dresser and primping center. The roomy drawers provide abundant storage for linens and much more, while sparkling lighting keeps the outlook bright.



THE BEDROOM TV is positioned just right to watch the 20" flat screen in bed. Catch a little Leno before your 40 winks. Or, see that chin in high-definition on the optional Samsung® 19" LCD HDTV.

LEAP LARGE STATES IN A SINGLE BOUNDER.

Bounder is ideal for extended trips. It's designed for superior durability and maximum comfort. The galley is spacious, storage room is ample, and the tanks have a large capacity so you can dry camp longer. Even the exterior full-body paint is made for long wear. We apply DuPont® paint in a two-stage process for durability and beauty. Now, the most difficult part will be choosing your color.

BOUNDER EXTERIORS

BAHAMA BLUES
Scheme 1*



RIVER ROCK
Scheme 1*



WHITE SHADOW
Scheme 1*



BEIGE BOUNTY
Scheme 1*



WHITE SHADOW
Scheme 2*



* Each color is available in both Scheme 1 and Scheme 2 graphics. See your Fleetwood dealer or visit our website at www.fleetwoodrv.com to view all graphic and color choices.



BOUNDER

PROOF THAT PRETTY CAN BE PRACTICAL.

These attractive fabrics and handsome wood finishes are pleasing to the eye. But you'll be even more pleased when you find out how durable they are. All the surfaces in Bounder are long-wearing and easy to clean so your motor home will look nice for years to come. Pick your favorite from these palettes.

INTERIOR DÉCORS

BAHAMA BLUES

Living/Dining Room



Sofa

Dinette Cushions

Ultraleather™
Driver and Front
Passenger Seats,
Sofa (optional)

Bedroom

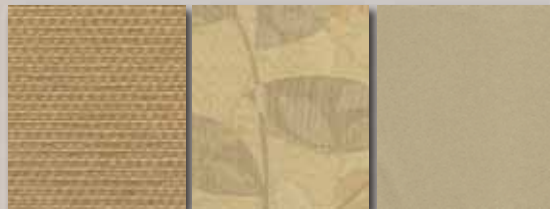


Headboard &
Bedspread

Pillow Shams &
Throw Pillows

CASHMERE

Living/Dining Room



Sofa

Dinette Cushions

Ultraleather™
Driver and Front
Passenger Seats,
Sofa (optional)

Bedroom



Headboard &
Bedspread

Pillow Shams &
Throw Pillows

QUARTZ

Living/Dining Room

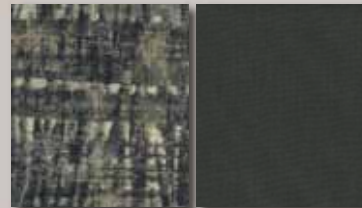


Sofa

Dinette Cushions

Ultraleather™
Driver and Front
Passenger Seats,
Sofa (optional)

Bedroom



Headboard &
Bedspread

Pillow Shams &
Throw Pillows

WOOD FINISHES



Plantation Cherry



Summit Ash

EVERYTHING YOU NEED. NOTHING YOU DON'T.

Both inside and out, Bouncer provides dozens of features standard. But we've left out the fancy frills and expensive extras that make the price tag soar. So you'll enjoy great features like these at a value price.

1 EXTERIOR AWNING makes a pleasant front porch to sit under on a sunny day. (Electric version is optional.)

2 5.5 KW ONAN® GENERATOR runs very quietly but provides plenty of power. Perfect for dry camping.

3 WHOLE COACH WATER FILTRATION delivers safe, fresh drinking water throughout your coach.

4 DIAMOND SHIELD (optional) protects your paint finish on the lower front cap from paint chips and damage caused by road debris, bug acids and weathering. This clear, 8 mil. urethane film will help preserve the beauty of your Bouncer.



Vehicle shown in White Shadow Scheme 1 exterior graphics.

1 TUFF-PLY ROOF is UV resistant, durable and doesn't scratch like many competitors' fiberglass roofs.

2 REAR VISION CAMERA (optional) helps you back up with a live video feed to the driver's area and one-way audio from the back of the coach to the driver.

3 DUAL A/C UNITS are mounted on the roof to provide maximum cooling and plenty of storage.

4 AUTOMATIC LEVELERS level the coach at four points with the touch of a button.



Vehicle shown in White Shadow Scheme 1 exterior graphics.



INTERLOCKING CEILING-TO-SIDEWALL CONSTRUCTION helps keep the box square. This assures a proper cabinet fit.



INTERLOCKING FLOOR-TO-SIDEWALL CONSTRUCTION locks tightly to keep out water, dust and noise, and helps eliminate squeaks and rattles.



VACU-BOND® SIDEWALL CONSTRUCTION creates a strong, weather-resistant structure. All sidewalls, floors and ceilings are Vacu-bonded to a durable metal frame, far superior to the pinch roll method our competitors often use.



BOUNDER

PEACE OF MIND INCLUDED, STANDARD.

Fleetwood engineers have built dozens of safety features into Bounder, from the 3-point seat belts to the leveling jacks that automatically retract if the drive gear is engaged. Combined with Fleetwood's superior construction, the result is a motor home you can depend on for high quality and safety.

Safety

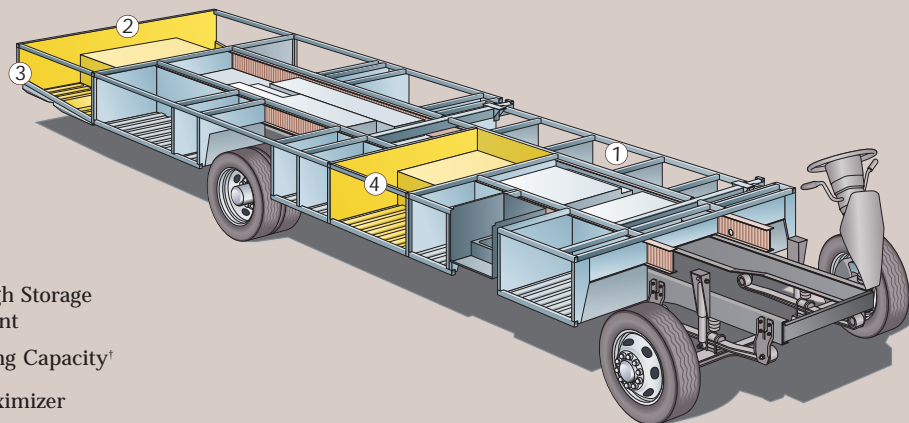


You've got precious cargo. So we've engineered dozens of innovative safety features into our motor homes to give you more peace of mind.



THE POWER PLATFORM® PLUS. BUILT FOR STRENGTH, STABILITY AND PASS-THROUGH STORAGE.

Fleetwood's patented Power Platform® Plus is the envy of our competitors. The ultra-strong chassis provides enormous storage space, lined with molded plastic for easy cleaning and lit to help you see after dark. The holding tanks are positioned in the bottom to enhance balance, and enclosed so they can be heated in cold weather to help prevent freezing.



- ① EZ Store
- ② Pass-Through Storage Compartment
- ③ Large Towing Capacity†
- ④ Storage Maximizer

Drawings are for illustrative purposes only to highlight aspects of motor home construction. Actual motor home design depends on model and is subject to change.

† The chassis manufacturer recommends the installation of a supplemental brake control system to activate the brakes on the vehicle or trailer you are towing. Hitch receiver ratings expressed are maximum for the hitch receiver installed and may require the purchase of additional equipment that is dependent on the weight of the towed load. Consult with hitch receiver manufacturer for further information.



THE UTILITY COMPARTMENT is the central place to hook up to water, sewer and cable. The water sprayer is handy for hosing out the compartment – or giving Rover a bath.



THE EZ STORE COMPARTMENT is the perfect place to store extra-long equipment, such as a ladder or casting rods. The compartment moves with the slide-out so you don't have to stoop underneath to get your stuff.

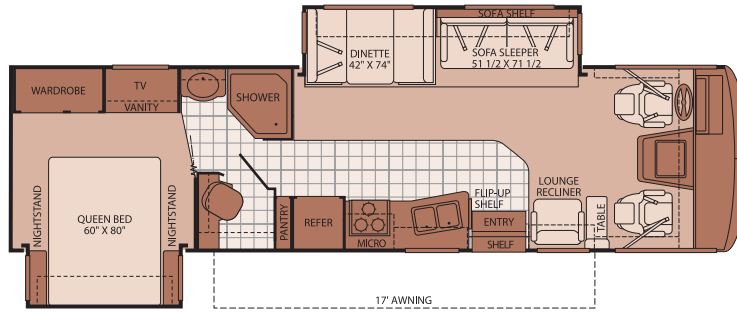


PASS THROUGH STORAGE is another great place for your long items, like golf clubs or fishing gear, coolers and chairs, because you can take them out from either side.



STORAGE MAXIMIZER does exactly that – gives you maximum storage. It's the perfect place for bulky items like portable fire pits.

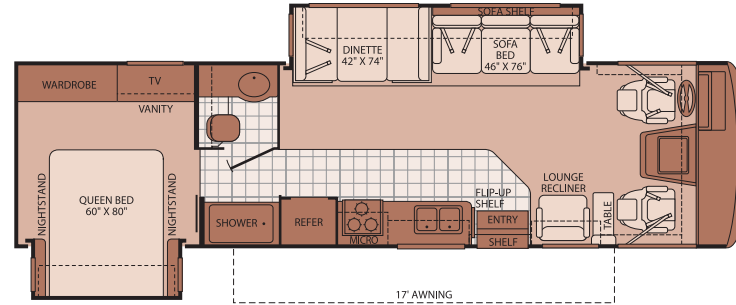
32K



Interior Storage Capacity: 144 cu. ft.
Exterior Storage Capacity: 123 cu. ft.

- Both a sofa & a dinette in a compact motor home
- Separate toilet room creates great versatility
- Available Options: 145, 149, 491, 700, 832, 833, 852

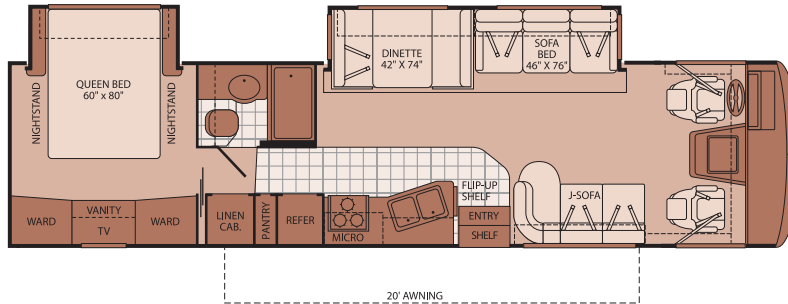
32W



Interior Storage Capacity: 140 cu. ft.
Exterior Storage Capacity: 115 cu. ft.

- Lots of galley countertop space for easy entertaining
- Large, comfortable shower
- Available Options: 491, 700, 807, 832, 833, 852

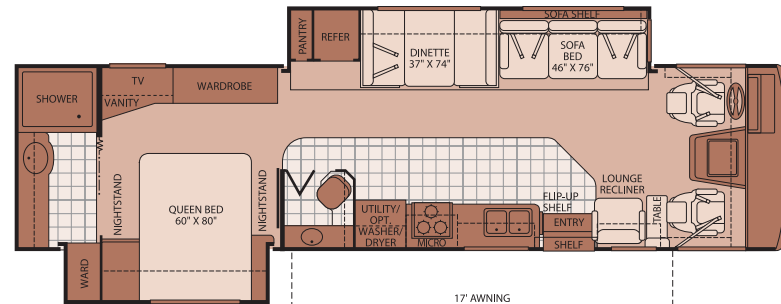
34G



Interior Storage Capacity: 177 cu. ft.
Exterior Storage Capacity: 136 cu. ft.

- Residential-like opposing sofas
- Self-contained bathroom with bathtub
- Available Options: 145, 149, 700, 807, 832, 833, 852

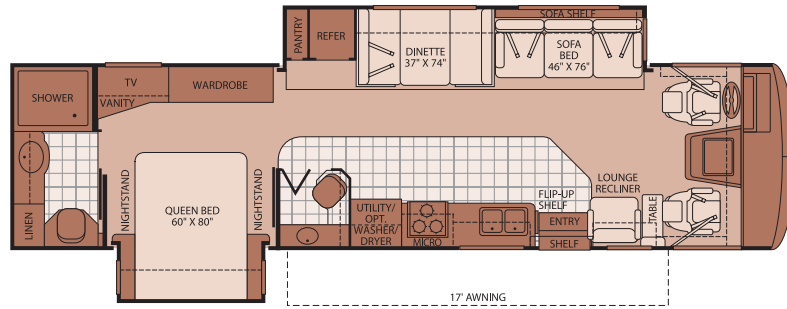
35E



Interior Storage Capacity: 190 cu. ft.
Exterior Storage Capacity: 150 cu. ft.

- Huge living room slide-out for a wide open feel
- Bedroom suite with full-width bathroom and 42\"/>
- Available Options: 126, 145, 149, 491, 700, 807, 832, 833

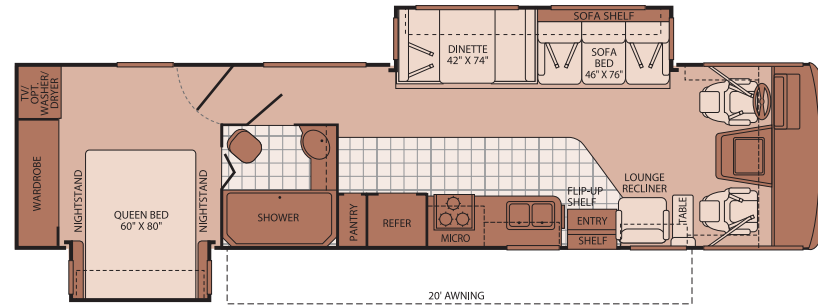
35H



Interior Storage Capacity: 169 cu. ft.
Exterior Storage Capacity: 150 cu. ft.

- Unique bath and a half layout for maximum privacy
- Full-width rear bathroom with 42" shower
- Available Options: 126, 145, 149, 491, 700, 807, 832, 833

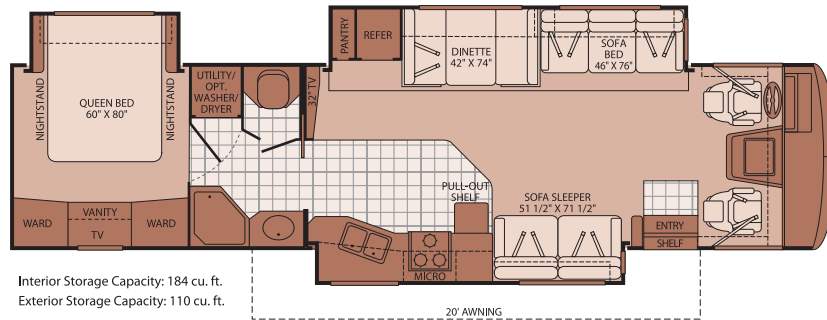
36Z



Interior Storage Capacity: 172 cu. ft.
Exterior Storage Capacity: 157 cu. ft.

- Side aisle layout provides total privacy in the bedroom
- Large bathroom with tub
- Available Options: 126, 145, 149, 491, 700, 807, 832, 833

38P



Interior Storage Capacity: 184 cu. ft.
Exterior Storage Capacity: 110 cu. ft.

- Mid-coach home theater with 32" Samsung® LCD HDTV
- Large square footage for more comfortable, longer trips
- Available Options: 126, 145, 149, 632, 700, 832, 833, 852

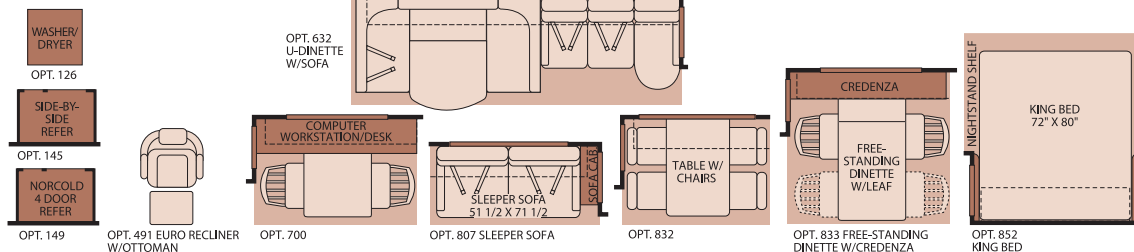
Seatbelt configuration may vary depending on options chosen.

Service



Help is nearby. When you need an upgrade or repair, you'll find facilities all across North America and more than 1,000 dealers ready to assist you.

OPTIONS



STANDARD FEATURES

INTERIOR Throughout

- 120V/12V AC/DC Converter
- 120V/12V Wire Raceways
- 3 Interior Decors
- 3 Way Water Pump Switch
- 34,000 BTU Furnace (30,000/20,000 BTU on 38P)
- 10 Gallon Quick Recovery Water Heater w/Direct Spark Ignition (Gas/Electric)
- Central Electrical Panel
- Complete TuffPEX Plumbing System
- Coordinated Cabinet Hardware
- Décor Lighting
- Deluxe Roller Bearing, Full Extension Drawer Guides & Transit Ship Locks
- Dual 6V Deep Cycle House Batteries
- Dual Roof A/C High Efficiency w/Solar Panel & Chill Grills
- Energy Management System
- Fluorescent Ceiling Lights w/Dual Bulbs
- Incandescent Lighting
- Plush Wall-to-Wall Carpet w/Carpet Pad
- Radius Corner Cabinetry
- Solid Divider Doors
- Telephone Jack In-Dash
- TV Antenna w/Signal Booster
- Wall Switches
- Water Heater Bypass
- Whole Coach Water Filtration System
- Wood Drawers

Driver Convenience

- 3 Point Seat Belts at Driver & Front Passenger Seats
- AM/FM Radio w/CD Player, Satellite Radio Ready
- Auto A/C Heater Combo
- Auxiliary Start Circuit
- Battery Disconnect System
- CB Radio Ready
- Cruise Control
- Dash Fans
- Double Swivel Sun Visors w/Map Pockets
- Driver/Front Passenger Captain's Chairs w/Reclining Back/Slide Controls
- Intermittent Wiper Control
- Low Profile Engine Cover
- Monitor Panel in Dash
- Radio Switch Main/Auxiliary Power
- Soft Surface Automotive Dash
- Tilt Steering Wheel

Living Room

- 27" Flat Screen TV (32" LCD HDTV in 38P)
- DVD Player
- Entry Assist Handle
- Lounge Recliner (Select Models)
- Residential Seat Styling

Galley

- 1.4 cu.ft. Over the Range Microwave Oven w/Electronic Touch Pad
- 8 cu.ft. Dometic® Double Door Refrigerator

- Adjustable Cabinet Shelves (Select Cabinets)
- Demand Water Pump w/Filter
- Fan-Tastic® Power Roof Vent
- Folding Range Cover
- Large Drawers Under Dinette
- Large, Double Stainless Steel Sink
- Raised Panel Cabinet Doors
- Single Lever Galley Faucet w/Pullout Head
- Sink Cover/Cutting Board
- Vinyl Flooring
- Waste Basket
- 3 Burner, High Output Range w/Oven

Bedroom

- 20" Flat Screen TV
- Bedspread w/Decor Pillows
- Pleated Shades
- Rear Speakers
- Restonic® Innerspring Mattress
- Second Phone Jack
- Wardrobe Lighting

Bathroom

- Coordinated Bath Accessories
- Fan-Tastic® Power Roof Vent w/Wall Switch
- Glass Shower Enclosure w/Skylight and Lower Step Threshold
- Hardwood Bath Door/Trims
- Molded Tub/Shower Enclosure
- Porcelain Toilet w/Water Saver
- Skylight in Tub/Shower
- Toilet Tank San-T-Flush™ System

Safety/Convenience

- 10 ABC Fire Extinguisher
- Carbon Monoxide Detector/Alarm
- Propane Detector/Alarm
- Smoke Detector/Alarm
- Child Safety Tether
- Multiple Seatbelt Locations

EXTERIOR Throughout

- 4 Colorways in 2 Graphic Schemes
- 5.5 kW Onan® MicroQuiet Generator
- 50 Amp Service
- Awning Rail/Drip Molding (Both Sides)
- Dual Battery Charge Control
- Dual Pane Windows w/Screens
- Dual Patio Receptacles
- Fiberglass Front/Rear Caps
- Full-Body Paint
- Heated Water & Holding Tank Compartments
- Mud Flaps
- Park Cable Receptacle
- Patio Awning
- Single Motor Windshield Wipers w/Wet Arm
- Utility Compartment w/Exterior Shower
- Valve Extenders
- Wheel Simulators (Ford® Chassis on 32K & 32W)
- Large Headlamps
- ABS Wheel Well Trims
- TV/12V Jack in Doorside Compartment

Automotive

- 4 Point Automatic Levelers
- Large, Curved Aerodynamic Bonded-in Windshield
- Steel Surface on Bulkhead
- Trailer Hitch w/7 Pin Electrical Hook-Up
- Underhood Utility Light

Safety/Convenience

- Entry Door w/Screen Door & Deadbolt Lock
- Porch Light (Doorside)
- Power Entry Step
- Remote/Heated Rear View Mirrors
- Roof Ladder
- Automotive Safety Glass
- Daytime Running Lights
- Hydraulic 4 Wheel Disk Brakes w/4 Wheel Anti-Lock Brakes

Storage

- Continuous One-Piece Compartment Bulb Seal
- EZ Store Compartment on Living Area Slide-Outs
- Gas Lift Strut Supports
- Hidden, Stainless Steel Latch Rods
- Insulated Aluminum Luggage Doors w/Single Paddle Metal Latches & Stainless Steel Hinges
- Lighted Luggage Compartments
- Pass Through Storage
- Rotomolded Polyethylene Luggage Compartments

Body Structure

- Aluminum Interlocking Floor/Wall/Ceiling Framing
- Basement Floor Configuration
- Power Platform® Plus Construction (Fleetwood Exclusive)
- Royal Tuff-Ply Radius Roof w/Ducted A/C
- Vacu-bond® Upper/Lower Floors
- Vacu-bond® Walls w/Smooth High Gloss Exterior Tuff-Coat® Fiberglass

OPTIONS

INTERIOR - Throughout

- Computer Workstation In-Dash
- CSA Package (Canadian Specs)**
- Sirius Satellite Radio® (6 Month Subscription Included)
- Washer/Dryer (Select Models)
- Samsung® 26" LCD HDTV Front/Samsung® 19" LCD HDTV Rear

Driver Convenience

- Ultraleather™ Driver and Front Passenger Chairs
- DSS Manual Lift Satellite Dish
- DSS Auto Seek Satellite Dome

Living Room

- Leather Euro Recliner w/Ottoman
- Sofa w/Footrest
- Ultraleather™ Sofa Bed
- Ultraleather™ Hide-A-Bed
- Ultraleather™ Lounge Recliner
- Ultraleather™ Sofa w/Footrest

Galley

- 3 Burner Cooktop
- 12 cu.ft. Side-by-Side Dometic® Refrigerator w/Ice Maker (Select Models)
- Convection Microwave Oven
- Free-Standing Table & Chairs
- Norcold® 4 Door Refrigerator w/Ice Maker (Select Models)

Bedroom

- Torque Windows

EXTERIOR - Throughout

- Diamond Shield Clear Front Protective Mask
- Electric Awning
- Powered Front Shade
- Rear Vision Camera

FLEETWOOD ADVANTAGES

- Power Platform® Plus Construction (Fleetwood Exclusive)
- Pass Through Storage
- DuPont® Full-Body Paint Standard
- 7 Floor Plans from 33' to 38' w/Double or Triple Slide-Outs
- Multiple Decors, Wood and Exterior Graphics Combination to Customize Your Bounder

**CSA standards may require substitution or deletion to achieve conformance.

WEIGHTS AND MEASUREMENTS

FORD®/WORKHORSE™ CHASSIS

MODELS	32K	32W	34G	35E	35H	36Z	38P
Engine Displacement (Liters)	6.8/8.1	6.8/8.1	6.8/8.1	6.8/8.1	6.8/8.1	6.8/8.1	N/A /8.1
Wheelbase (Inches)	208"/208"	208"/208"	228"/228"	228"/228"	228"/228"	228"/228"	N/A /242"
GVWR (lbs) ¹	20,500/21,200	20,500/21,200	22,000/21,200	22,000/22,000	22,000/22,000	22,000/22,000	N/A /24,000
Front GAWR (lbs) ²	7,000/7,500	7,000/7,500	7,500/7,500	7,500/8,000	7,500/8,000	7,500/8,000	N/A /9,000
Rear GAWR (lbs) ²	13,500/14,500	13,500/14,500	14,500/14,500	14,500/14,500	14,500/14,500	14,500/14,500	N/A /15,500
GCWR (lbs) ³	25,500/26,000	25,500/26,000	26,000/26,000	26,000/26,000	26,000/26,000	26,000/26,000	N/A /30,000
Hitch Rating Weight (lbs) ¹	5,000/5,000	5,000/5,000	5,000/5,000	5,000/5,000	5,000/5,000	5,000/5,000	N/A /6,000
Tongue Weight (lbs) ¹	500/500	500/500	500/500	500/500	500/500	500/500	N/A /600
Fuel Capacity (gal)	75/75	75/75	75/75	75/75	75/75	75/75	N/A /75

DIMENSIONS & CAPACITIES

MODELS	32K	32W	34G	35E	35H	36Z	38P
Overall Length ⁴	33' 3"	33' 3"	35' 3"	36' 3"	36' 3"	37' 3"	38' 3"
Overall Height (with A/C)	12' 7"	12' 7"	12' 10"	12' 10"	12' 10"	12' 10"	12' 10"
Overall Width (maximum) ^{5, 6}	102"	102"	102"	102"	102"	102"	102"
Interior Height (maximum)	84"	84"	84"	84"	84"	84"	84"
Interior Width (maximum)	96"	96"	96"	96"	96"	96"	96"
Fresh Water Holding Tank (gal)	85	85	85	85	85	85	85
Grey Water Holding Tank (gal)	58	58	58	58	58	58	58
Black Water Holding Tank (gal)	42	42	42	42	42	42	42
Appliance Propane Tank (gal) (WC) ⁷	25	25	25	25	25	25	25
Water Heater Tank (gal)	10	10	10	10	10	10	10

Liquid Weight Reference: Water (gal) = (8.3 lbs/3.8 kgs) Fuel (gal) = (6.1 lbs/2.8 kgs) Propane (gal) = (4.2 lbs/1.9 kgs)
Metric Conversion: Multiply pounds x 0.453 to obtain kilograms. Multiply gallons x 3.785 to obtain liters. Multiply liters x 61 to obtain cubic inches.

- GVWR (Gross Vehicle Weight Rating) is the maximum permissible weight of this fully loaded motor home. The GVWR is equal to or greater than the sum of the (UVW) unloaded vehicle weight plus the (CCC) cargo carrying capacity*.
- GAWR (Gross Axle Weight Rating) is the maximum permissible loaded weight a specific axle is designed to carry.
- GCWR (Gross Combined Weight Rating) is the value specified by the motor home manufacturer as the maximum allowable loaded weight of this motor home with its towed vehicle. Towing and braking capacities may be different. Refer to Fleetwood and chassis manufacturer's manuals for complete information.
- Length measured from front bumper to rear bumper (excludes accessories).
- Excludes safety equipment and awnings.
- Motor homes feature a body-width over 96" which will restrict your access to certain roads. Before purchasing, you should research any state and/or province road laws which may affect your usage.
- Tank manufacturer's listed water capacity (WC). Actual propane capacity is 80% of water listing as required by the safety code.

- The chassis manufacturer recommends the installation of a supplemental brake control system to activate the brakes on the vehicle or trailer you are towing. Hitch receiver ratings expressed are maximum for the hitch receiver installed and may require the purchase of additional equipment that is dependent on the weight of the towed load. Consult with hitch receiver manufacturer for further information.

N/A = not available at time of printing.

*UVW and CCC are found on the cargo carrying capacity label in each RV.

IMPORTANT—PLEASE READ: Product information, photography and illustrations included in this publication were as accurate as possible at the time of printing. For further product information and changes, please visit our website at www.fleetwoodrv.com or contact your local Fleetwood dealer. Prices, materials, design and specifications are subject to change without notice. All weights, fuel, liquid capacities and dimensions are approximate. Fleetwood has designed its recreational vehicles to provide a variety of uses for its customers. Each vehicle features optimal seating, sleeping, storage and fluid capacities. The user is responsible for selecting the proper combination of loads (i.e. occupants, equipment, fluids, cargo, etc.) to ensure that the vehicle's capacities are not exceeded.

CHASSIS

Model: Ford®/Workhorse™

Engine: 6.8L Triton V10/8.1L Vortec™ V8

Transmission: Ford®, 5-Speed Automatic w/Overdrive
Workhorse™, 6-Speed Automatic w/Overdrive

Torque: 457 lb-ft @ 3250 RPM/455 lb-ft @3200 RPM

Alternator: 130 Amp/145 Amp

Horsepower: 362HP/340HP

Warranty



Exclusive RV ownercare warranty.
See your Fleetwood dealer for details.



CLASS A GAS



RV OWNERCARE*

Limited one-year/15,000-mile coach warranty and three-year/50,000-mile structural warranty, whichever occurs first, and it is fully transferable for the first 12 months. RV OWNERCARE is one of the RV industry's most comprehensive programs and includes systems, appliances, components and construction, with no deductible and no service charge. RV OWNERCARE coverage is provided from a company that will be around in the future to service your needs. See your nearest Fleetwood dealer for a full explanation of benefits and restrictions.

CONTACT US

To locate a dealer near you, visit our website at www.fleetwoodrv.com or call 1-800-444-4905. We can also be contacted at Fleetwood Customer Relations, P.O. Box 1007, Decatur, IN 46733.

FLEETWOOD TRAVELCADE CLUB

As a Fleetwood owner, you're eligible to become a member of the Fleetwood Travelcade Club. It's a perfect way to meet other Fleetwood owners who love to travel across America and share in the RV lifestyle. Call (877) 577-2560 or visit our website at www.fleetwoodrv.com/owners_clubs to learn more and join the fun! For Boulder specific club information visit: Bounders of America at www.boulder.org or Bounders United at www.boulder.net.



treadlightly!
LEAVING A GOOD IMPRESSION



YOUR LOCAL FLEETWOOD DEALER IS:

Colton RV & Marine
3122 Niagara Falls Blvd
North Tonawanda, NY 14120
(716) 694-0188
www.ColtonRV.com

Colton RV
3443 Southwestern Blvd.
Orchard Park, NY 14127
(716) 957-3250
www.Coltonrv.com

IMPORTANT—PLEASE READ

Product information, photography and illustrations included in this publication were as accurate as possible at the time of printing. For further product information and changes, please visit our website at www.fleetwoodrv.com or contact your local Fleetwood dealer. Prices, materials, design and specifications are subject to change without notice. All weights, fuel, liquid capacities and dimensions are approximate. Fleetwood has designed its recreational vehicles to provide a variety of uses for customers. Each vehicle features optimal seating, sleeping, storage and fluid capacities. The user is responsible for selecting the proper combination of loads (i.e. occupants, equipment, fluids, cargo, etc.) to ensure that the vehicles capacities are not exceeded.

WHY FLEETWOOD?



Quality

There's no cutting corners. Skilled craftsmen build every Fleetwood RV for maximum durability and longevity.



Trust

More people trust Fleetwood. After all, we've spent over 50 years perfecting RVs, earning the loyalty of generations of RVers.



Passion

We're truly passionate about the RV lifestyle. Fleetwood was founded by RV enthusiasts, and that tradition continues today.



Safety

You've got precious cargo. So we've engineered dozens of innovative safety features into our motor homes to give you more peace of mind.



Service

Help is nearby. When you need an upgrade or repair, you'll find facilities all across North America and more than 1,100 dealers ready to assist you.



Warranty

Exclusive RV ownercare warranty. See your Fleetwood dealer for details.

*For complete info see your Fleetwood dealer.

©2007. Fleetwood Enterprises, Inc.
Printed in the USA. Inventory Control Number BDR08B2, 11/07.
Model Year 2008, Second Edition.

 **FLEETWOOD**
Driven to Explore