



*LIFE. LUXURY. LIVING.*

— L A N D M A R K —



Visit HEARTLAND on:



[www.heartlandrvs.com](http://www.heartlandrvs.com)

AT LANDMARK BEAUTY IS MUCH MORE THAN SKIN DEEP,  
BUT WE DO HAVE PLENTY OF EYE CANDY:



# IN 2003.

HEARTLAND RV WAS LAUNCHED WITH A SINGLE FIFTH WHEEL AND HUGE GOALS. THE FIFTH WHEEL? A LANDMARK. THE GOALS? EXCEEDED. THOUSANDS OF LANDMARKS HAVE FILLED CAMPGROUNDS AND RV RESORTS WITH HAPPY CUSTOMERS SINCE THAT FIRST UNIT WAS BUILT.



# NOW, IN 2017,

14 YEARS LATER, HEARTLAND RV HAS 21 BRANDS, IS A HUGE COMPONENT OF PARENT COMPANY THOR INDUSTRIES, AND IS FULL STEAM AHEAD IN 2017 WITH A REVITALIZED LANDMARK OFFERING. AT TEAM LANDMARK, WE CAN'T WAIT TO SEE WHAT THIS YEAR AND THE NEXT 14 WILL BRING!

# THE NEWPORT

ENJOY THE DYNAMIC LIVING ROOM, A BEAUTIFUL FULL BATH AND A HALF, AND THE FULLY LOADED KITCHEN. THE ORIGINAL "365" FLOORPLAN AND STILL ONE OF OUR CORE FLOORPLANS.



## WHAT IS THE BOTTOM LINE?

THE BOTTOM LINE IS LANDMARK ADDS LONGEVITY TO YOUR COACH WITH BOTH CONSTRUCTION AND END-USER FEATURES.



BACKLIT AND DIMABLE SLIDE OUT FASCIA.

# WELCOME TO THE BED, BATH AND KITCHEN SHOW



## OUR BATHS HAVE:

- 2 FULL MEDICINE CABINETS
- 3 DRAWERS
- BUILT IN NIGHT LIGHT

THE OSHKOSH BEDROOM FEATURES A 40" TV AND A 5100BTU FIREPLACE NEXT TO THE DRESSER.



FULLY LAMINATED FLOOR - NO WEAK SPOTS.



THREE BURNER GAS COOKTOP WITH AUTO IGNITE.

# EVERY FLOORPLAN IS UNIQUE, ROOM BY ROOM



NOT ONLY DO WE RESEARCH MARKET TRENDS, RVER LIFESTYLES AND HOUSING IDEAS, BUT WE KNOW A STREAMLINED LAYOUT THAT MAXIMIZES LIVING, EFFICIENCY AND STORAGE IS THE KEY TO DELIVERING THE FULL-TIME RV EXPERIENCE YOU EXPECT.

THE OSHKOSH FEATURING MOROCCAN SAND DECOR.



BACKLIT KITCHEN  
BACKSPASH TILE



ISLAND END SHELF



MULTIPLEX LIGHTING  
SYSTEM

# A THEATRE ROOM IN A FIFTH WHEEL?!

INTRODUCING THE CHARLESTON REAR DEN.



SHOWN IN ST. THOMAS  
DRIFTWOOD DECOR



65" TV WITH OPTIONAL  
THEATER SEATING WITH  
USB, HEAT, POWER AND  
STORAGE DRAWERS.



H-RANGE TIRES ON  
8,000LBS AXLES



SINGLE BASIN  
FARMHOUSE SINK



DEXTER AXLES WITH  
3-3/8" BRAKES

# NUTS & BOLTS, GUTS & GLORY

HOW YOUR LANDMARK IS BUILT.

LAMINATED  
WALLS R11  
EQUIVALENT  
INSULATION

DUAL-PANE FRAME-  
LESS FLUSHMOUNT  
WINDOWS.

HYDRAULIC SLIDE-OUTS  
ON MAIN FLOOR - STRONG  
AND EFFICIENT.

IN-HOUSE FULLY LAMINATED  
FLOOR WITH ALL ALUMINUM  
SUPERSTRUCTURE.  
R38 EQUIVALENT INSULATION

4-STEP ULTRA LIGHT  
ALUMINUM ENTRY.

CUSTOM MADE  
ILLUMINATED  
NAME PLATE.



127 SPRINKLER RAIN BAY TEST



# LANDMARK

THREE SIXTY FIVE



3RD AC OPTION FOR  
45,000 SIMULTANEOUS  
BTU OF COOLING!



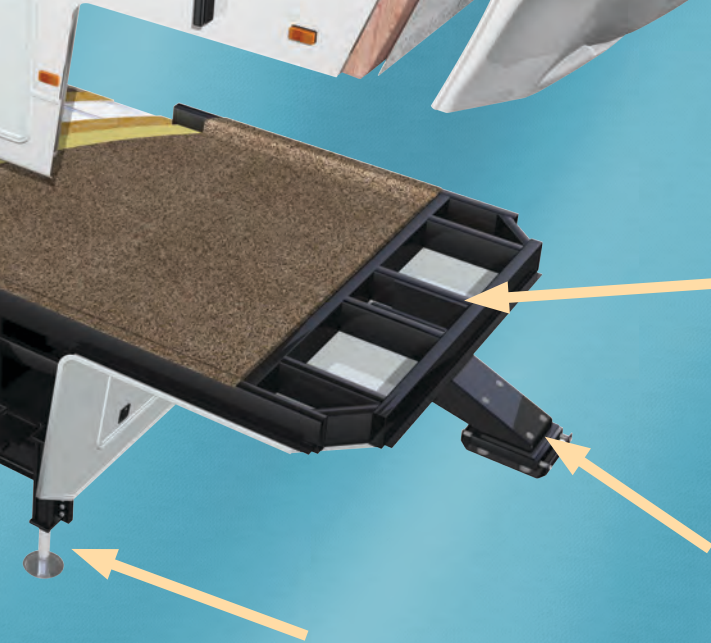
STAMPED STEEL TRUSS  
ROOF WITH BATTEN  
INSULATION, ASTRO FOIL  
AND THE MOST FLEXIBLE  
ROOF MEMBRANE IN  
THE INDUSTRY. R40  
EQUIVALENT INSULATION

STANDARD FULL  
BODY PAINT!

BOX TUBE STEEL  
SUPPORT IN  
UPPER DECKS.

MOR/RYPDE PIN BOX  
GYRATES FRONT TO BACK,  
SIDE TO SIDE TO PROTECT  
YOU AND YOUR LANDMARK  
WHILE TOWING.

6PT HYDRAULIC  
LEVEL SYSTEM.



# FLOORPLANS

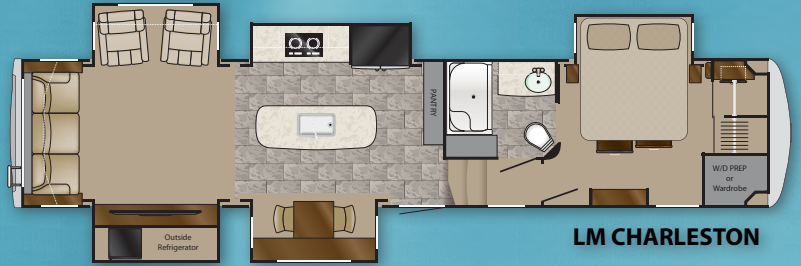
# LANDMARK

THREE SIXTY FIVE



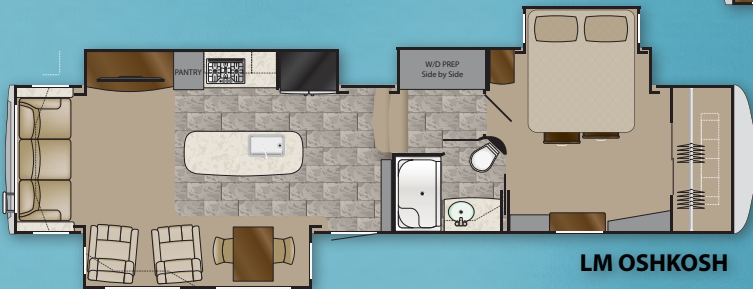
**LM NEWPORT**

42' 8" • Dry Weight - 15,231 lbs



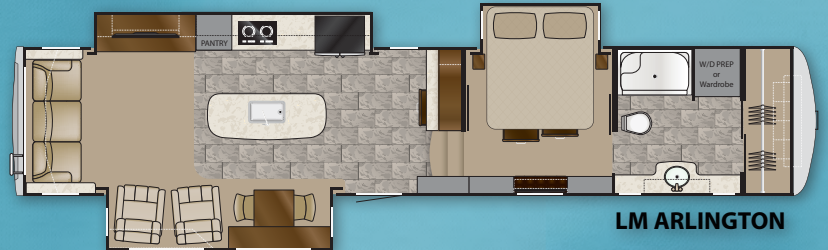
**LM CHARLESTON**

41' 4" • Dry Weight - 14,987 lbs



**LM OSHKOSH**

39' 2" • Dry Weight - 14,724 lbs



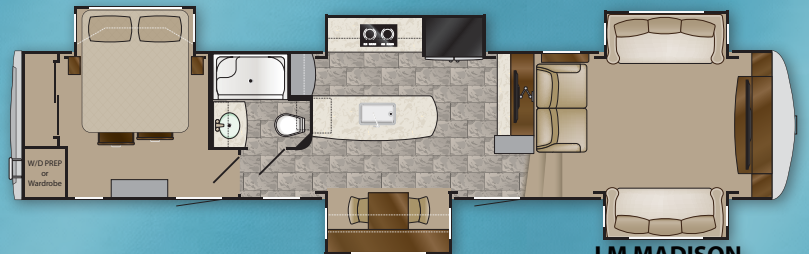
**LM ARLINGTON**

42' 8" • Dry Weight - 15,168 lbs



**LM ORLANDO**

42' 1" • Dry Weight - 15,225 lbs



**LM MADISON**

40' 5" • Dry Weight - 15,172 lbs

**COMING SOON**

**LM LOUISVILLE**

37' • Dry Weight - 14,000 lbs.

# STANDARDS

- Frameless dual pane windows
- MorRyde pin box
- Dyson cordless vac
- 5100 BTU fireplace/heater
- Solid surface countertops
- Residential refer
- Full-extension ball bearing drawer guides
- Washer dryer Prep
- 13 gallon trash can
- Dual access silverware drawer
- 3-burner gas cooktop
- Convection microwave
- Queen mattress
- 55" LED TV with sound bar (65" select models)
- Independent slide switches
- Maple hardwood cabinetry & backlit fascia
- In-step storage drawer
- Pre-wire for Winegard Traveler satellite
- LED lighting
- Hide-A-Bed sofa
- Generator prep
- Universal docking center
- 3 way water pump switch
- Ceiling fan
- 30lb LP tanks
- High gloss fiberglass
- Dual satellite prep
- Dual battery hookup
- Aluminum wheels
- Battery disconnect
- 6-point automatic hydraulic Level-Up
- Aluminum framed laminated floor and roof
- Radius slam latch baggage doors
- Power awning with LED lights
- 30K BTU Whisper Quiet A/C system
- MCD roller shades
- 32" bedroom TV (40" select models)
- Wainscoting in dinette area
- Power 2nd awning
- Electric power cord reel
- MorRyde suspension
- Gen prep
- 1000 watt inverter
- 80 amp converter
- 50 Amp service
- Backlit sofa tables
- Backlit buffet
- Quad aluminum step
- First Alert safe
- High Rise coffee table
- 40" TV in main basement

## OPTIONS

- Slide awning package (3, 4 or 5 slides)
- Alumi-Guard wrapped awning protection, both awnings
- 5.5KW Onan LP generator
- King bed
- Induction / cook top - N/A with oven
- Power theatre seating ipo recliners - USB ports & heat - N/A Madison
- Full oven with gas cook top
- Dishwasher
- Yeti Extreme Cold weather package
- Heat pump on main and/or 2nd A/C
- Fantastic fan kitchen n/a w/ 3rd AC
- Fantastic fan bath
- 3rd 15,000 BTU AC n/a with fan in kitchen
- Disc brakes

## EXCLUSIVE LIST

What sets the Landmark apart at Heartland RV and beyond?

- 17.5" H-range tires and 8,000lb Dexter axles w/ shocks
- 3 3/8" drum brake
- Surge guard whole-house electrical protection
- LED backlit welcome sign at gooseneck
- Full body paint standard
- 40" TV in main basement on swing out bracket
- Stainless steel farmhouse sink w/ apron and integrated cutting board
- Multi-plex lighting system w/ backlit, labeled switches and dimmers
- Curved slide out fascia lit from floor to ceiling of all slideouts
- All USA-built sofas, recliners and theatre seating
- True-privacy trim on living room windows for total blackout w/ MCD shades
- Nightlight 6-light switch with conveniently located 3-way switches at bed and downstairs
- CPAP compatible solid surface nightstands w/ lit edges, mounted to bed slide fascia for easy use
- Energy management system standard for controlled use of all appliances and power
- Above bed lit ceiling art
- High-rise coffee table/desk
- In-house milled solid surface backsplash w/ backlit tile
- Whole house water filter
- 3rd AC option for 45,000 total BTU cooling power



[www.heartlandrvs.com](http://www.heartlandrvs.com)

Visit HEARTLAND on:



Product information is as accurate as possible as of the date of publication of this brochure. Due to Heartland's commitment to continuous product improvement - floorplans, materials, components, features, measurements, specifications, options, etc. are subject to change at any time without notice or obligation. In certain conditions some additional equipment may be needed. Photos may show optional equipment or props used for photography purposes only.

Heartland has listed the approximate base weight of the trailer without the option equipment included. Option equipment will impact the weight of the trailer. Please locate the weight sticker attached to the trailer you are considering for the most accurate trailer weight.

Tow Vehicle Caution: Owners of Heartland recreational vehicles are solely responsible for the selection and proper use of tow vehicles. All customers should consult with a motor vehicle manufacturer or their dealer concerning the purchase and use of suitable tow vehicles for Heartland products. Heartland disclaims any liability or damages suffered as a result of the selection, operation, use or misuse of a tow vehicle. Heartland's limited warranty does not cover damage to the recreational vehicle or the tow vehicle as a result of the selection of the tow vehicle.

40,000 Litho 1/17



Heartland Recreational Vehicles  
 2831 Dexter Drive  
 Elkhart, Indiana 46514  
 574-262-5992

**Your Authorized Heartland Dealer:**

Colton RV  
 3122 Niagara Falls Blvd  
 North Tonawanda, NY 14120  
 (716) 694-0188  
[www.ColtonRV.com](http://www.ColtonRV.com)

Colton RV  
 3443 Southwestern Blvd.  
 Orchard Park, NY 14127  
 (716) 957-3250  
[www.Coltonrv.com](http://www.Coltonrv.com)