

LUXURY TRAVEL TRAILERS  
& FIFTH WHEELS

DEDICATED TO QUALITY,  
INNOVATION AND  
VALUE.



FAMILY OWNED SINCE 1983

# 2009 Canyon Trail



Relax & Enjoy Your RV Experience!

# Luxury Travel Trailers & Fifth Wheels

**Canyon Trail**  
By Gulf Stream



The residential island kitchen in the 33 FSBI is equipped with a deluxe range, large oven, microwave and abundant pantry storage for full-time living. The abundant counter top space makes food preparation easier for full-time living.

Features and specifications shown may not be available on all models and are subject to change without notice.



You'll love the spacious kitchen of the 33 FSBI featuring a 44" deep super slide with extra space for the sofa and dinette. Our optional free standing dinette table and chairs are larger to accommodate four adults comfortably. Larger windows offer a great view. Full extension steel bearing drawer guides, solid hardwood cabinets, doorway trim, fascia and crown mouldings as well as stainless steel sink with water filter are some of the high quality residential features not found on most other brands. Shown in Earth Tan decor.

# Luxury Travel Trailers & Fifth Wheels

**Canyon Trail**  
By Gulf Stream



Our full profile design enhances livability by providing over 6' 5" of headroom in the bedroom area. Additionally the front closet is taller and deeper offering more storage and convenient access to all your belongings. Washer/dryer prep is also made available in the front closet area.



The RV lifestyle provides the perfect getaway for family to step out of the everyday routine and live life to its fullest. However, there is something to be said for everyone having their own space. The rear bunk house is a kids dream spot including their own entertainment center and extra large bunks

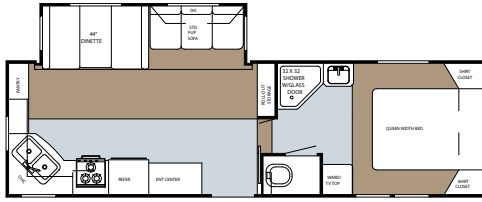


All full profile bedroom suites feature a 12" deep one-piece ABS storage compartment under the lift-up bed (over 21 cu. ft.) that is perfect for pillows, blankets, sleeping bags and more.

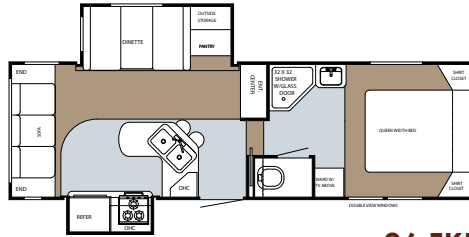


The full-size adult bathroom area makes getting ready easier. All units feature a larger shower with glass enclosure, porcelain toilet and sink lavatory for residential look and feel.

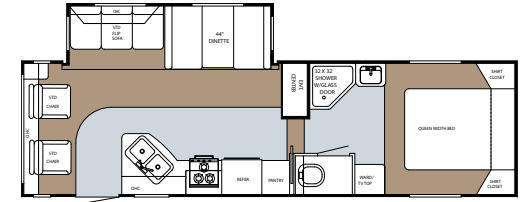
# Mid Profile Fifth Wheels



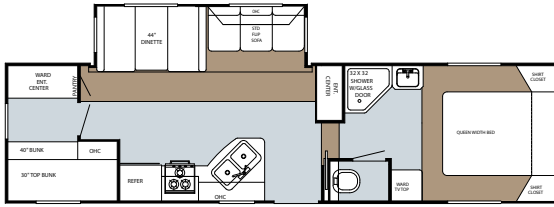
25 FRKW



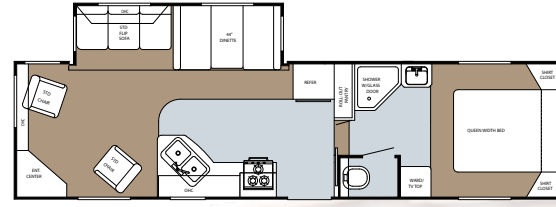
26 FKDS



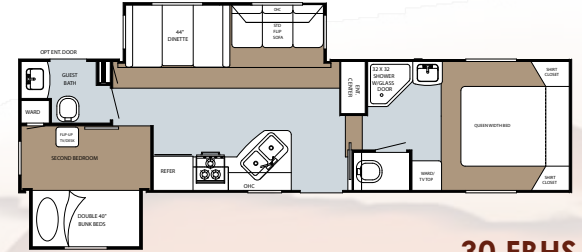
27 FRBW



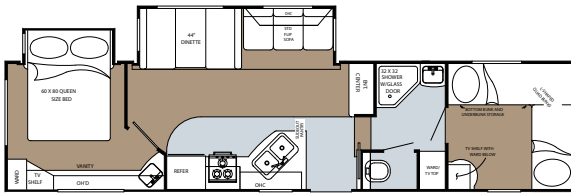
28 FRBH



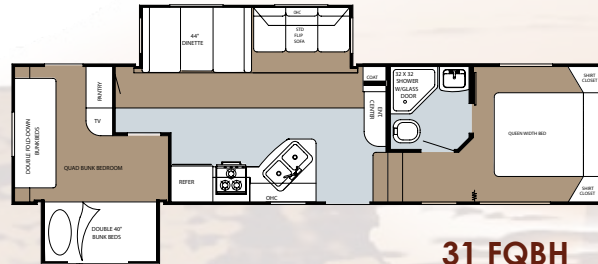
29 RLFW



30 FBHS



33 FBHT



31 FQBH

## Mid Profile Fifth Wheels

MODEL NAME	25 FRKW	26 FKDS	27 FRBW	28 FRBH	29 RLFW	30 FBHS	31 FQBH	33 FBHT
Length	27'-10"	27' 1"	28'-10"	31'-5"	31'-11"	32'-11"	33'-11"	35'-9"
Height (exterior)	11'-9"	11' 9"	11'-9"	11'-9"	11'-9"	11'-9"	11' 9"	11'-9"
GVWR	11,810	12,050	11,870	11,390	11,510	11,210	11,300	11,400
*Dry Weight (approx.)	7,716	7980	7,507	8,204	8,164	9,115	9,079	9,174
*Hitch Weight (approx.)	1,650	1650	1,710	1,230	1,350	1,050	1,140	1,240
*Net Carrying Capacity	4,094	3,930	4,363	3,186	3,346	2,095	2,161	2,226
Black Water Tank Cap.	40 gal.	40 gal.	40 gal.	40 gal.	40 gal.	80 gal.	40 gal.	40 gal.
Grey Water Tank Cap.	80 gal.	80 gal.	80 gal.	80 gal.	80 gal.	80 gal.	80 gal.	80 gal.
Fresh Water Tank Cap.	60 gal.	60 gal.	60 gal.	60 gal.	60 gal.	60 gal.	60 gal.	60 gal.
LP Gas Tanks	2x30 lb.	2x30 lb.	2x30 lb.	2x30 lb.	2x30 lb.	2x30 lb.	2x30 lb.	2x30 lb.
Furnace (BTU's)	30,000	30,000	30,000	30,000	30,000	30,000	30,000	30,000
Water Heater	6 gal.	6 gal.	6 gal.	6 gal.	6 gal.	6 gal.	6 gal.	6 gal.

## Full Profile Fifth Wheels

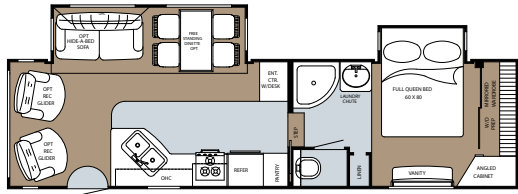
MODEL NAME	29 FRBW	32 FRKW	33 FSBI	34 FBRW	34 FSBW	35 FDBH	35 FSBT
Length	32'-8"	34'-9"	36'-11"	36'-1"	37'-8"	37'-10"	35'-11"
Height (exterior)	12'-4"	12'-4"	12'-4"	12'-4"	12'-4"	12'-4"	12' 4"
GVWR	12,610	14,560	14,370	14,130	13,910	14,330	14,140
*Dry Weight (approx.)	9,207	10,283	9,869	10,658	11,142	11,333	10,150
*Hitch Weight (approx.)	2,210	2,560	2,370	2,130	1,910	2,330	2,140
*Net Carrying Capacity	3,403	4,277	4,501	3,472	2,768	2,997	3,930
Black Water Tank Cap.	40 gal.	40 gal.	40 gal.	40 gal.	40 gal.	80 gal.	40 gal.
Grey Water Tank Cap.	80 gal.	80 gal.	80 gal.	80 gal.	80 gal.	80 gal.	80 gal.
Fresh Water Tank Cap.	60 gal.	60 gal.	60 gal.	60 gal.	60 gal.	60 gal.	60 gal.
LP Gas Tanks	2x30 lb.	2x30 lb.	2x30 lb.	2x30 lb.	2x30 lb.	2x30 lb.	2x30 lb.
Furnace (BTU's)	42,000	42,000	42,000	42,000	42,000	42,000	42,000
Water Heater	12 gal.	12 gal.	12 gal.	12 gal.	12 gal.	12 gal.	12 gal.

## Luxury Travel Trailers

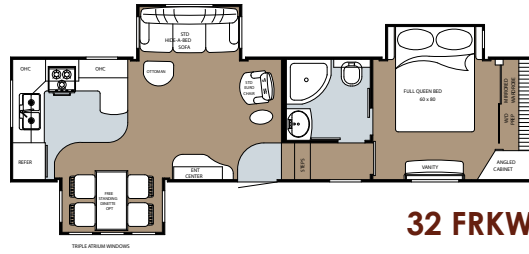
MODEL NAME	28 TKDS	30 TRET	32 TBHS	32 TFMK	35 TBHS
Length	30'-8"	34'-3"	35'-9"	35'-3"	37'-6"
Height (exterior)	11'-2"	11'-2"	11'-2"	11'-2"	11'-2"
GVWR	11,510	11,210	11,100	11,570	12,920
*Dry Weight (approx.)	7,550	7,401	8,686	8,344	9,280
*Hitch Weight (approx.)	1,110	810	940	1,410	920
*Net Carrying Capacity	3,820	3,669	2,354	3,166	3,580
Black Water Tank Cap.	40 gal.	40 gal.	80 gal.	40 gal.	80 gal.
Grey Water Tank Cap.	80 gal.	80 gal.	80 gal.	80 gal.	80 gal.
Fresh Water Tank Cap.	60 gal.	60 gal.	60 gal.	60 gal.	60 gal.
LP Gas Tanks	2x30 lb.	2x30 lb.	2x30 lb.	2x30 lb.	2x30 lb.
Furnace (BTU's)	30,000	30,000	30,000	30,000	30,000
Water Heater	6 gal.	6 gal.	6 gal.	6 gal.	6 gal.

\* Weights are approximate and based on standard features. Optional equipment is not included. Features and specifications shown may not be available on all models and are subject to change without notice.

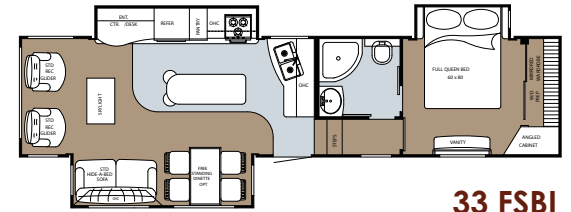
# Full Profile Fifth Wheels



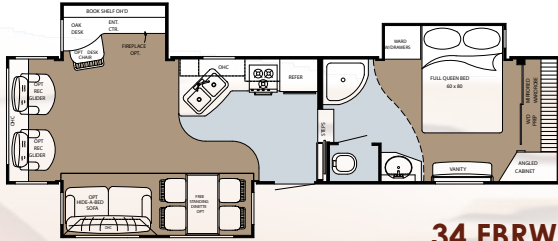
**29 FRBW**



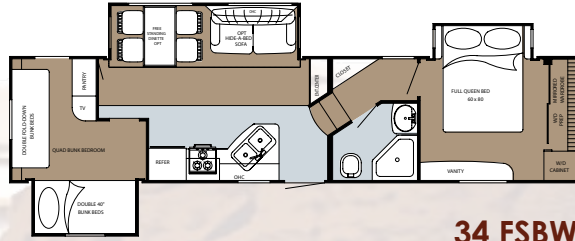
**32 FRKW**



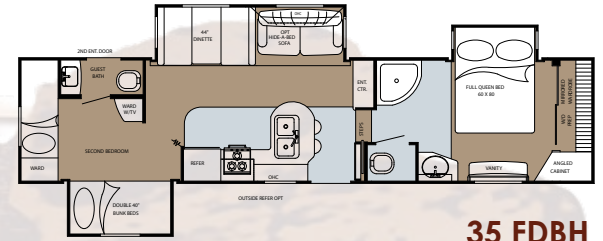
**33 FSBI**



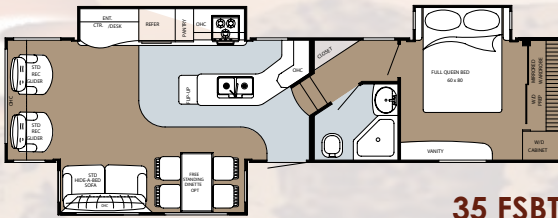
**34 FBRW**



**34 FSBW**

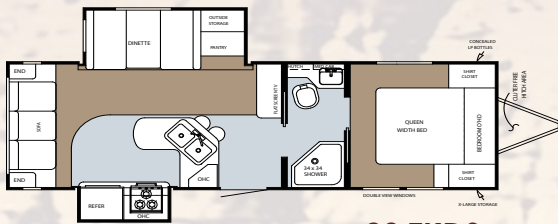


**35 FDBH**

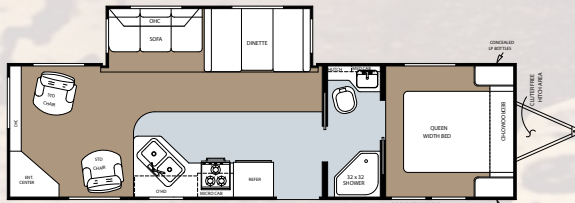


**35 FSBT**

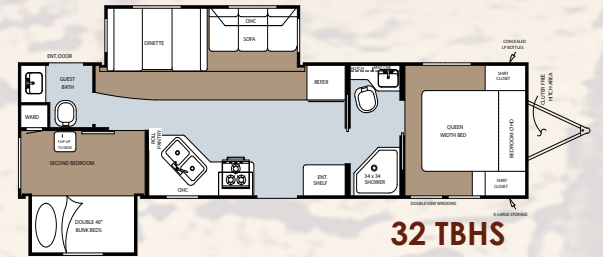
# Luxury Travel Trailers



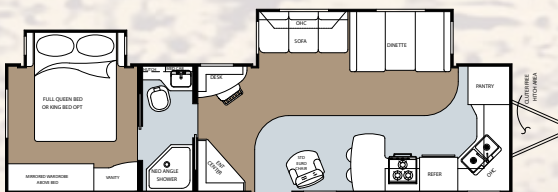
**28 TKDS**



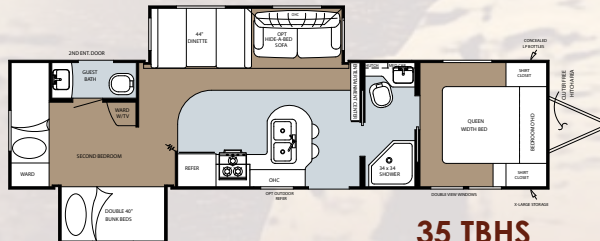
**30 TRET**



**32 TBHS**



**32 TFMK**



**35 TBHS**



# Our Advantages

**Canyon Trail**  
By Gulf Stream

## ATTIC VENT



## RESIDENTIAL STYLE CABINETRY

Residential cabinetry features solid oak drawer fronts and mortis and tenon door frames highlighted with residential style hardware. Long lasting beauty and durability you can enjoy now and increased resale value to enjoy later.



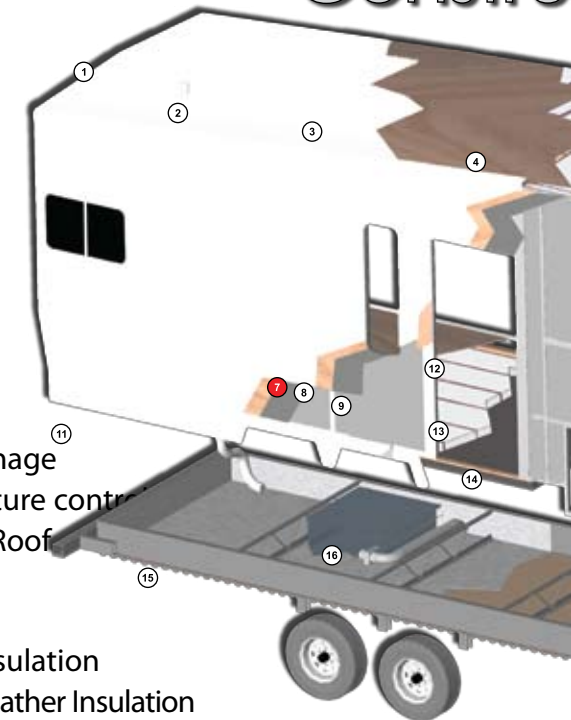
Unwanted moisture escapes through our standard "Easy Escape" attic vents that extend the life of your coach.

A residential oversized stainless steel sink is deep enough to wash even the largest pots and pans.

## HIDDEN STRENGTHS

- Huge under-bed storage
- Light-weight welded aluminum construction.
- 6'-2" Main slide ceiling height.
- 44" Slide room depth
- 2" thick vacuum-bond laminated walls w/ solid block foam insulation.
- Recessed step into bathroom.
- Aerodynamic front fiberglass cap
- Durable protective frame coating.
- Full walk-on roof decking.
- Real hardwood cabinet doors, drawers, trim & slide fascia.
- LED readout on 12V fuse panel
- Easy lube axles.
- Fully enclosed and heated underbelly, gate valves and holding tanks.
- Electric slide rooms with interior switches for each room
- 44" dinette booth
- Deepest slide rooms in its class
- One piece large rear bay window
- Residential size stainless steel kitchen sink
- Six panel interior bath door
- Residential linoleum in kitchen and bathroom
- 1/4" thick steel header across all slide room ceilings
- Residential cabinet hardware
- Full-extension drawer guides
- One-piece seamless floor decking & underbelly

## Superior Construction



## ROOF

1. Crowned Roof improves drainage
2. Attic Vent for improved moisture control
3. Seamless One-Piece Rubber Roof with 12-Year Warranty
4. 7/16" Roof Decking
5. Thick Blanket of Fiberglass Insulation (R-14 std. R-28 with Extreme Weather Insulation Package)
6. 5" Bowed Roof Trusses - 16" on center

## SIDEWALL

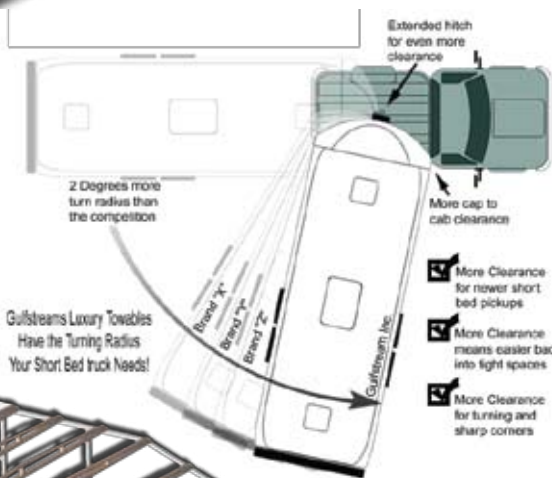
7. Vacuum Bonded Sidewall with Fiberglass Exterior
8. Thick Luan Board Backer
9. High-Density Block Foam Insulation (R-10 std. R-12 with Thermal-Pane Construction)
10. Welded Aluminum Wall Studs
11. Full Radius Fender Skirt Metal



Features and specifications shown may not be available on all models and are subject to change without notice.

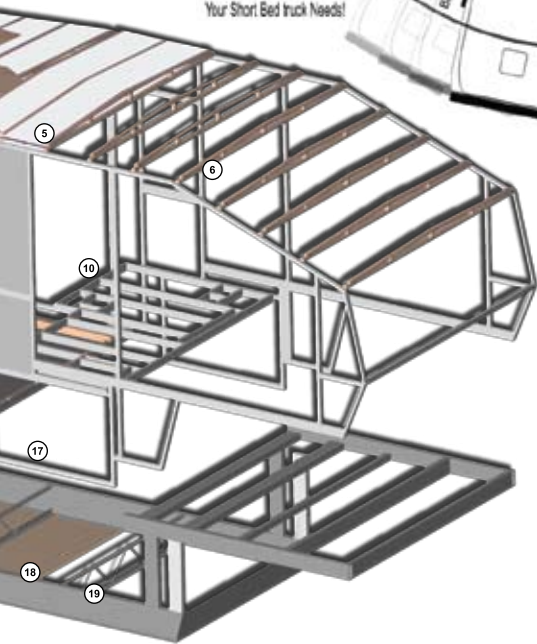


## 88 DEGREE TURNING RADIUS



Gulfstreams Luxury Towables Have the Turning Radius Your Short Bed truck Needs!

ction



## FLOOR & SUB-BASEMENT

12. 5/8" Seamless Floor Decking
13. 3" Floor Joists - 12" On Center
14. Vapor Barrier Protective Sheeting
15. 8" & 10" I-Beam Main-rails with Durable Protective Coating
16. Enclosed and Heated ABS Tanks
17. Heated Basement
18. 100% Enclosed Underbelly
19. Spaced Rod and Angle with Z-Bar Supports



## CONVENIENCE CENTER

Gulf Stream luxury fifth wheels are equipped with a convenience center with controls for lights, slides and tank level indicators



## VACUUM-BOND LAMINATED WALLS

Our light weight aluminum framing and solid block foam insulation give superior strength and insulation. The 2" thick wall is put through a 5 step laminating and vacuum bond process ensuring an air-tight and water-resistant bond far superior to other lamination processes.



## A ONE-PIECE STEEL HEADER

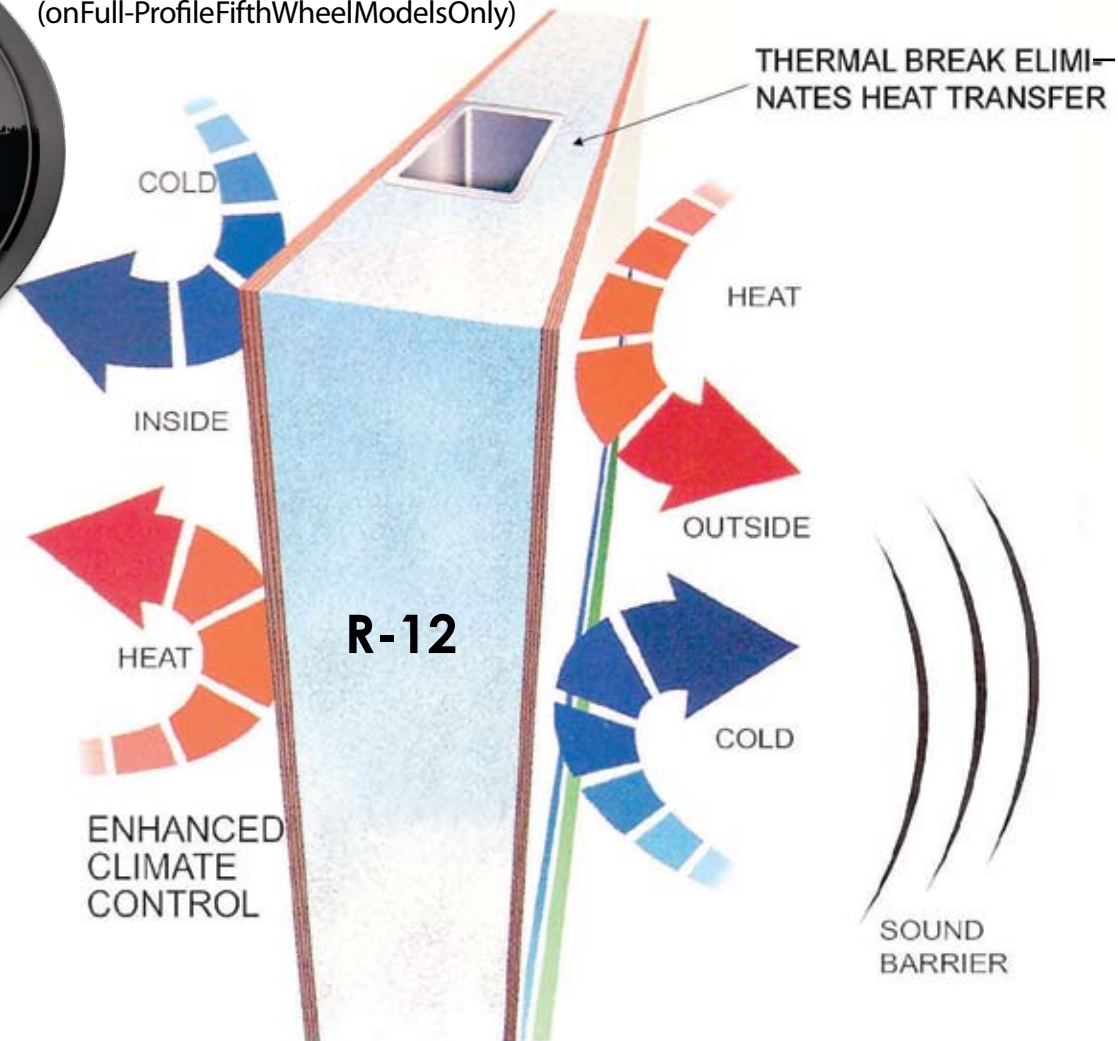
Our slide room is anchored together with a one piece (4" x 1/4" thick) steel header. This steel header provides unmatched strength and support which will ensure a square, tight seal every time.

(Please don't try this with any other recreational vehicle besides a Canyon Trail.)



# THERMAL-PANE SIDEWALL CONSTRUCTION

(on Full-Profile Fifth Wheel Models Only)



Our unique sidewall construction on all full profile units keeps the interior living space comfortable.



Includes:

## Roof (R-28)

- R-14 Fiberglass Roof Insulation
- R-14 Thermal Foil Roof Insulation

## Floor (R-32)

- R-14 Fiberglass Floor Insulation
- R-14 Thermal Foil Underbelly Insulation
- R-4 Floor Decking & Underbelly
- Fully Enclosed Heated Basement, Tank Area & Dump Valves
- R-14 Fully Insulated Bath & Bedroom Floor Deck
- Insulated Chassis Frame Rails
- Attic Vents to Remove Moisture

# Standard Features & Options



## STANDARD FEATURES

### INTERIOR

- CEILING PANEL – (SOFT TOUCH LEATHER BEIGE)
- STUCCO WALL VINYL
- DOORS/DRAWERS/TRIM (SOLID ASH)
- 1-1/2" CROWN SIDEWALL CEILING TRIM
- HARDWOOD CABINET ACCENT TRIM
- DÉCOR GLASS DOORS (LR OVERHEAD)
- 6-PANEL INTERIOR BATH DOOR
- SLIDE OUT OVERHEAD CABINET
- UNDER CABINET ACCENT TRIM (KITCHEN & LIVING ROOM OVERHEADS)
- ENTERTAINMENT CENTER W/ COMPONENT SHELF
- UPGRADE HARDWOOD SLIDE OUT FACIA
- COUNTERTOPS – BUTTERRUM W/ MATCHING EDGE TRIM
- LINOLEUM - (KITCHEN, ENTRYWAY & BATH)
- LIVING ROOM CARPET W/ 3/8" PAD
- BEDROOM CARPET & PAD
- TRASH CAN IN KITCHEN

### HEATING / COOLING / PLUMBING

- 30,000 BTU FURNACE
- 13,500 BTU DUCTED ROOF A/C
- WATER PURIFIER
- 6 GAL GAS/ELECTRIC DSI WATER HEATER
- WATER HEATER BY-PASS VALVE
- PREP FOR 2ND A/C (BED SLIDE FIFTH WHEELS)
- WALL MOUNT FIRE EXTINGUISHER
- HEATED UNDERBELLY & STORAGE COMPARTMENTS
- BLACK TANK FLUSH
- 2ND BLACK TANK FLUSH (1/2 BATH 30FBHS, 32TBHS)
- EXTERIOR CONVENIENCE CENTER FOR PLUMBING AND ELECTRICAL CONNECTIONS (FULL PROFILE FW ONLY)

### BATH

- CHINA TOILET (MAIN BATH)
- LAV SINK – WHITE
- MEDICINE CABINET W/ MIRROR DOOR
- SKY LIGHT (BATH)
- PLATINUM BATH HARDWARE
- GLASS SHOWER DOOR
- RECESSED BATH STEP
- LARGE SHOWER PAN & SURROUND
- GRAB HANDLE AT BATH STEPS
- BEDROOM/BATH PRIVACY DOOR
- LINOLEUM FLOORING

### ELECTRICAL / SAFETY

- DIGITAL TV ANTENNA W/ AMP & SIGNAL BOOST
- LIGHT AT KITCHEN SINK
- PHONE JACK
- POWER BATH VENT
- EXTERIOR LIGHTS (PATIO / DUMP AREA)
- 12V COMPARTMENT STORAGE LIGHT (DR SIDE)
- CARBON MONOXIDE DETECTOR
- SMOKE DETECTOR
- LP LEAK DETECTOR
- TANK MONITOR PANEL
- CONVENIENCE SWITCH CENTER
- 12v SURROUND SOUND DVD/CD/AM/FM STEREO W/ 5 SPEAKERS IN LIVING ROOM, 2 IN BEDROOM AND 2 OUTSIDE!
- BATTERY DISCONNECT SWITCH
- INSULATED BATH & BEDROOM FLOOR DECK

### FURNISHINGS

- DECORATIVE WALL MIRROR
- WALL BORDER TAPE
- ROLL OUT PANTRY (SOME MODELS)
- FABRIC VALANCES W/ STRETCH DRAPES

- PLEATED WINDOW SHADES (EXCEPT KITCHEN)
- QUEEN BED W/ SPREAD & PILLOWS
- HUGE UNDER-BED STORAGE W/ ABS TUB
- REAR BEDROOM SLIDEOUT (33FBHT)
- DECORATIVE HEADBOARD
- (2) SWIVEL ROCKERS (27FRBW, 29RFLW)
- JACK KNIFE SOFA
- POTS & PAN DRAWER ON ONE SIDE OF BOOTH DINETTE & UNDER STOVE IN MOST MODELS
- 44" BOOTH DINETTE

### APPLIANCES

- 3-BURNER HIGH OUTPUT RANGE WITH 16" OVEN & AUTO IGNITOR
- POWER RANGE HOOD WITH LIGHT
- RANGE COVER
- STAINLESS STEEL KITCHEN SINK W/ DRINKING WATER FAUCET
- (2) BLACK SINK COVERS
- WOOD GRAIN REFRIGERATOR INSERTS
- REFRIGERATOR (8 C.F.)
- MICROWAVE OVEN
- WATER FILTRATION SYSTEM

### EXTERIOR

- WHITE MOD WHEELS
- 15" RADIAL TIRES (TRAVEL TRAILERS & MID PROFILE FIFTH WHEELS)
- 16" RADIAL TIRES (30FBHS, 33FBHT)
- CRANK-DOWN SPARE TIRE CARRIER
- REAR STABILIZER JACKS
- HEATED & ENCLOSED UNDERBELLY & GATE VALVES
- TRIPLE ENTRY STEPS
- 30"X72" RADIUS ENTRY DOOR W/ DEADBOLT LOCK
- SWING OUT GRAB HANDLE
- PATIO AWNING

- SECURITY LIGHT, HITCH LIGHT & DUMP AREA LIGHT
- 6'-2" SLIDE ROOM HEIGHT
- 44" SLIDE ROOM DEPTH
- AERODYNAMIC FRONT FIBERGLASS CAP W/ DOCKING LIGHTS & HITCH MIRROR
- RADIUS SKIRT METAL
- BLACK FRAMED RADIUS SAFETY GLASS WINDOWS
- (2) 30# LP BOTTLES W/ AUTO CHANGE OVER
- ROOF LADDER
- INTERIOR ENTRY DOOR HANDLE
- LP QUICK CONNECT FOR GAS GRILL
- DIAMOND PLATE REAR BUMPER COVER
- ELECTRIC SLIDE ROOM CONTROLS W/ INSIDE SWITCHES
- OUTSIDE SHOWER
- FRONT-FACING SNAP JACKS (PULL PINS)

## POPULAR OPTIONS

- HIGH GLOSS FIBERGLASS EXTERIOR
- DUAL RECLINERS IPO SWIVEL ROCKERS
- MOR/RYDE HITCH PIN BOX
- 12V HEAT PADS (HOLDING TANKS)
- DOUBLE (THERMAL) PANE WINDOWS
- ALUMINUM WHEELS
- ELECTRIC REAR STAB JACKS
- POWER PATIO AWNING
- 26" FLAT SCREEN LCD TV - LIVING ROOM
- 32" FLAT SCREEN LCD TV - LIVING ROOM
- 20" LCD TV W/ BUILT-IN DVD IN BEDROOM OR BUNK ROOM W/ QUICK RELEASE BRACKET
- SWING ARM TV BRACKET
- CEILING FAN
- FANTASTIC FAN WITH TOUCH PAD CONTROLS ON WALL
- FIREPLACE IN LIVING ROOM OR BEDROOM

- AREA (SOME MODELS)
- THROW RUG
- DBL BUNK BEDSPREADS
- QUAD BUNK BEDSPREADS
- SLIDING & SWIVEL TOP FREE STANDING DINETTE W/(4) STORE-MORE CHAIRS
- (2) EURO CHAIRS WITH OTTOMAN (27FBHS, 29RFLW)
- AIR MATTRESS HIDE-A-BED SOFA P/O FLIP
- HARDWOOD 6-PANEL REFRIGERATOR INSERTS P/O STD
- 15,000 BTU A/C
- 12 GAL. WATER HEATER (BED SLIDE FIFTH WHEELS ONLY)
- REAR BUMPER MOUNT BIKE RACK
- GENERATOR PREP (FULL PROFILE FW ONLY)
- CENTRAL VACUUM SYSTEM
- TRAIL AIR EQUAFLEX SUSPENSION
- 42,000 BTU FURNACE
- WASHER / DRYER PREP (FIFTH WHEEL BED SLIDES ONLY)
- KING BED (32 FRKW, 345 BRW, 33 FSBI, 34 FSBW, 35 FSBT)
- DESK CHAIR
- 5.5 KW GENERATOR (FULL PROFILE FW ONLY)
- DOUBLE INSULATION FOR EXTREME WEATHER W/ R-28 ROOF & R-32 FLOOR INSULATION
- SOFT TOUCH LEATHER SOFA OR RECLINERS
- WOOD GRAIN LINOLEUM



Gulf Stream delivers the largest residential size kitchen and overhead cabinets in the industry! All cabinets are mounted into solid galvanized steel backing.



Our 44" deep slide out rooms make larger dinette booths possible to easily fit four full-sized adults.

## 24 MONTH WARRANTY

## ON STRUCTURAL COMPONENTS\*

1 year total use warranty under normal use against defects in material and/or workmanship in construction and original components.

\*For purposes of this warranty, Structural components shall be limited to the structure of the side walls, front and back walls, roof and floor. See the official written Gulf Stream Coach, Inc. Warranty for details.



Our full-extension roller bearing drawer hardware provides long lasting, effortless access to these spacious drawers

A FULL-LINE RV  
MANUFACTURER



FAMILY OWNED SINCE 1983



### GULF STREAM COACH EXCEPTIONAL VALUE...

Gulf Stream has been awarded the prestigious Platinum Recreational Vehicle Manufacturer Quality & Productivity Award in recognition of our commitment to producing quality recreational vehicles.

Your family and friends will feel safe and comfortable in a Gulf Stream travel trailer or fifth wheel. Compare... and you will see the exceptional value of Gulf Stream travel trailers & fifth wheels.

### GULF STREAM FACILITIES...

Family owned for 25 years and located in the heart of the Amish country, the complex covers over 200 acres and includes more than 1.5 million square feet of state-of-the-art manufacturing facilities.

Gulf Stream employs over 1400 men and women who are continuously trained on quality initiatives fostering the most creative and innovative culture in the RV industry.

With over 25 years of manufacturing experience producing quality Recreational Vehicles, Gulf Stream is a leading manufacturer of high quality and high value RV products that are distributed through a partnership of independent dealers who are focused on exceeding customer expectations.

### FEATURING A 2-YEAR WARRANTY!

In addition to our standard one year warranty, Gulf Stream Coach, Inc., offers an exclusive 24 month warranty on structural components. In addition, major component manufacturers are providing 24 month warranties on their products installed in Gulf Stream units such as refrigerators, antenna, furnace, water heater, air conditioner, awning, range, microwave and more. See the official written Gulf Stream Coach, Inc., Warranty for details.

\*for purposes of this warranty, "structural components" shall be limited to the structure of the side walls, front and back walls, roof and floor.

POST OFFICE BOX 1005



NAPPANEE, IN 46550

• YOUR GULF STREAM COACH DEALER •

Colton RV  
North Tonawanda, NY 14120  
(716) 694-0188  
(800) 628-4889  
www.ColtonRV.com

Colton RV  
Orchard Park, NY 14127  
(716) 957-3250  
(800) 628-4889  
www.Coltonrv.com



VISIT [WWW.GULFSTREAMRV.COM](http://WWW.GULFSTREAMRV.COM)

FOR MORE DETAILED INFORMATION...  
OR CALL 1-800-765-8787-EXT. 3288

For more information and available options, contact your local Gulf Stream dealer, [www.gulfstreamRV.com](http://www.gulfstreamRV.com) or Gulf Stream Coach, Inc. Gulf Stream Coach, Inc., reserves the right to make changes in prices, colors, materials, components and specifications and to discontinue models at any time without notice or obligation. Gulf Stream Coach, Inc., assumes no responsibility for any error in type or print reproduction of specifications or floor plans in this brochure. Photographs may show equipment or items that are optional and are not included in the purchase price of the coach. Test drive and review a current model at your nearest Gulf Stream dealer. © 2002 Gulf Stream Coach, Inc., Nappanee, Indiana U.S.A.

7/07-SP-20k