

2011 **Vista**





2011 **Vista**

The 2011 Winnebago Vista® opens new doors to adventure with more features, more floorplans and more value in an exceptionally priced Class A coach. Conveniences such as the Comfort Sofa Sleeper in the 26P, 30W and 36D and high-end roller shades that smoothly retract with just a touch make you feel right at home. The

new 35F even offers the added touch of a half-bath mid-coach and a private master bathroom with an incredibly spacious shower in the rear. The interior upgrade package is also available for those seeking an even more refined motor home experience. Say yes to fun and adventure this year in a brand new 2011 Winnebago Vista.

Just Like Home

Home cooking while you travel is easy in the fully loaded galley. In addition to the full complement of appliances, the abundant cabinetry in your choice of Coffee-Glazed Sierra Maple, Belmont Maple or Forest Cherry provides plenty of storage for all of your pots and pans. Easy-to-clean vinyl flooring comes standard on the 35F and 36D and is available on all other models.

Make meal preparation even more enjoyable by choosing the interior upgrade package. It includes a galley backsplash, sink and range covers, refrigerator insert, a flip-up countertop extension (NA 30W and 36D) and the Dream Dinette™ table that easily adjusts to the perfect height with one hand.

The large LCD TV—up to 40" in the 36D—lets you catch your favorite shows in glorious high definition. You can even add a second LCD TV over the cab in the 36D and a 1,000-watt inverter in any model to watch television without shoreline or generator power. The new 35F offers a half-bath mid-coach for guests and a large sectional sofa that you can expand when the slideout is extended.

35F Hearthstone with Coffee-Glazed Sierra Maple



1



2



Comfort Sofa Sleeper This available sofa easily folds out into a bed with a self-inflating mattress (26P, 30W, 36D).

- 1) By day it's a plush sofa.
- 2) A hidden drawer stores bed linens.
- 3) It converts easily into a bed.
- 4) The mattress inflates and deflates with an automatic pump.



Sectional Sofa The sectional sofa extends for additional seating and folds out to provide an extra-large sleeping space.



LCD TV The large LCD TV in the 35F is perfectly positioned for viewing from the sectional sofa.



Recognized Quality The Recreation Vehicle Dealer Association bestows its annual Quality Circle Award to the manufacturers that provide exceptional products, service and support. Only one manufacturer has received this honor for fourteen consecutive years: Winnebago Industries.®

GoWinnebago.com

Visit us for the latest updates and web-exclusive content

Rest Stop

After a long day of adventures, the Vista's bedroom provides the perfect escape with a queen bed and an available 19" LCD TV. Pack plenty of clothes for longer trips in the storage compartment under the bed (NA 30W) or in the twin wardrobes with center chest of drawers in the 35F and 36D. The 35F also features our 36" x 36" Big Shower—a real residential-style treat for experienced motor home enthusiasts.



35F Hearthstone with Coffee-Glazed Sierra Maple



Wardrobes Pack for any climate with his and her wardrobes in the 35F and 36D.



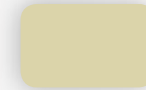
Bunk Beds The kids will enjoy their very own hideaway with available LCD DVD players for the bunk beds in the 32K.



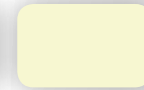
Bathroom The 35F features a large private master bath with the residential-style Big Shower.

Floorplans & Specifications

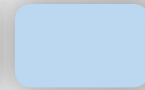
Dimensions shown are for sleeping space only and may vary due to styling differences. Dashed lines denote overhead storage areas. Floorplans and specifications are also available online at GoWinnebago.com.



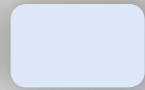
Standard
UltraLeather



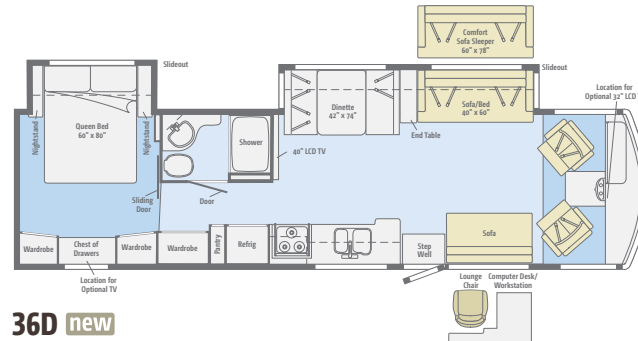
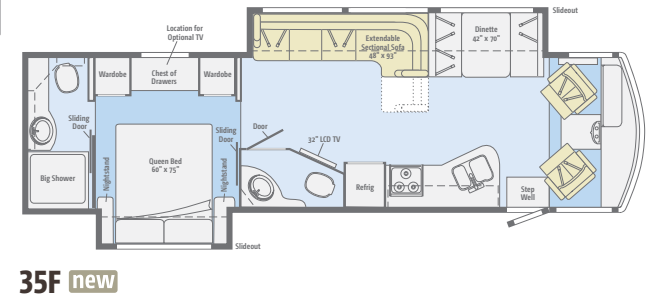
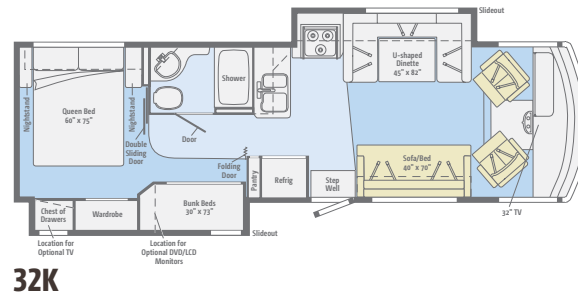
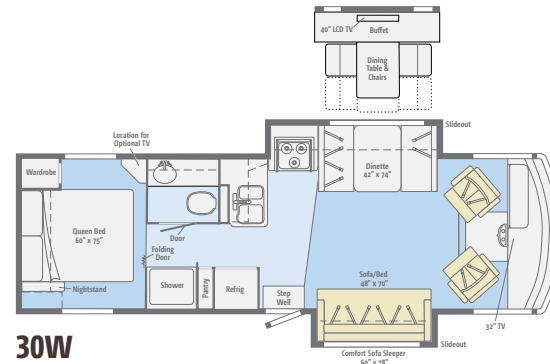
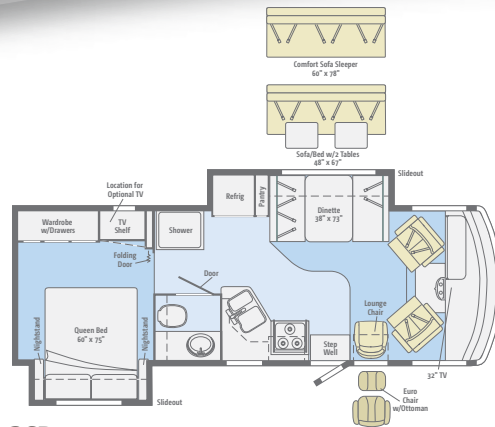
Optional
UltraLeather



Carpet



Vinyl



Take a Tour We're proud of our processes, state-of-the-art facilities and the people who make Winnebago Industries number one. We invite you to visit our complex in Forest City, Iowa, for a first-hand look at the dedication and technology behind every motor home we build.

GoWinnebago.com

Visit us for the latest updates and web-exclusive content

Weights & Measures

	26P	30W	32K	35F <small>new</small>	36D <small>new</small>
Length	26'11"	30'11"	33'	35'2"	36'3"
Exterior Height ¹	12'1"	12'4"	12'3"	12'3"	12'4"
Exterior Width ²	8'5.5"	8'5.5"	8'5.5"	8'5.5"	8'5.5"
Exterior Storage ³ (cu. ft.)	53.5	89.9	84.8	121	112
Awning Length	11'6"	17'	13'	16'	18'
Interior Height	6'8"	6'8"	6'8"	6'8"	6'8"
Interior Width	8'0.5"	8'0.5"	8'0.5"	8'0.5"	8'0.5"
Freshwater Capacity w/Heater ⁴ (gal.)	64	72	75	80	84
Holding Tank Capacity - Black/Gray ⁴ (gal.)	43/38	37/42	44/46	42 & 22*/52	50/52
LP Capacity ⁵ (gal.)	18	18	18	18	18
Fuel Capacity (gal.)	80	80	80	80	80
GCWR ⁶ (lbs.)	26,000	26,000	26,000	26,000	26,000
GVWR (lbs.)	16,000	18,000	22,000	22,000	22,000
GAWR - Front (lbs.)	6,500	7,000	8,000	8,000	8,000
GAWR - Rear (lbs.)	11,000	12,000	15,000	15,000	15,000
Wheelbase	158"	190"	208"	228"	242"

* The 35F uses separate black tanks for each bathroom

No Shortcuts – No Compromises

You can compare features. You can compare styles. But when it comes to quality construction, there is no comparison. Only motor homes manufactured by Winnebago Industries harness the legendary strength and durability of our SuperStructure® construction process—a process we've been perfecting for more than 50 years.

SuperStructure means a solid framework, steel and aluminum substructures and components built in-house to our exacting standards. It means managing each detail to ensure the integrity and quality of every coach. It means barcoding parts to save time during service and running every coach through a gauntlet of tests including a high-pressure water test before it leaves the factory.

Where other manufacturers cut corners, SuperStructure ensures the features you can't see are treated with the same care as the ones you can. When you buy a Winnebago motor home, you are getting a coach that is built for you—and built to last.



The crowned, one-piece **fiberglass roof** is backed by a 10-year limited parts-and-labor roof skin warranty. Fiberglass offers superior strength and durability over less attractive rubber roofs found on so many competitive models that can streak and degrade over time.

Durable, lightweight **Thermo-Panel® sidewalls** combine fiberglass, high-density block-foam insulation and the inner wall surface with aluminum support structures.

Metal substructures secure cabinets and appliances to add safety and stability.

An **electrodeposition coating** helps protect critical steel components.

SUPER STRUCTURE®



Specially engineered **interlocking joints** connect the floor, sidewalls and roof into a cohesive unit.



CHASSIS

Ford® F53 Chassis

- 362-hp 6.8L Super Duty V10 SEFI Triton® engine
- TorqShift™ 5-speed automatic transmission w/tow/haul
- 175-amp. alternator

Hydraulic brakes w/ABS

Trailer Hitch⁶: 5,000-lb. drawbar/500-lb. maximum vertical tongue weight

7-pin connector

Stainless steel wheel liners

OPTIONAL EQUIPMENT

HWH® automatic hydraulic leveling jacks

CAB CONVENIENCES

Cab Seats: armrests, lumbar support and multi-adjustable slide/recline/swivel

AM/FM stereo CD player

Convenience tray w/cupholders

Chassis/house battery radio power switch

Power steering w/tilt wheel

Cab wraparound curtain

Cruise control

12-volt powerpoints

Map lights

Sunvisors

C.B. wire prep

OPTIONAL EQUIPMENT

Rearview monitor system w/color camera, one-way audio and color LCD monitor

Sideview video camera system w/color monitor (requires rearview monitor system)

Power mirrors w/defrost

6-way power driver seat

Dual-speed defroster fans

AM/FM stereo w/CD/DVD player, input jacks, remote and alarm clock

INTERIOR

32" LCD TV (26P, 30W, 32K, 35F)

40" LCD TV (36D)

Amplified digital TV antenna system

Key-activated slideroom master lock switch

Satellite system ready

Blackout roller shades (lounge, dinette, bedroom)

Mini blinds (galley)

Vinyl floorcovering (excludes cab, slideroom floor and bedroom) (35F, 36D)

OnePlace® systems center

Roof vent (lounge)

Powered roof vent (bath)

Tinted windows

OPTIONAL EQUIPMENT

40" LCD TV w/dining table/buffet (30W)

32" LCD TV (36D)

Tinted, dual-glazed thermo-insulated windows

Solar/blackout roller shades (lounge, dinette, bedroom)

Powered ventilator fan (lounge)

Vinyl floorcovering (excludes cab, slideroom floor and bedroom) (26P, 30W, 32K)

Satellite dish antenna

Interior Upgrade Package: vinyl padded ceiling, galley backsplash, Dream Dinette™ dining table, range cover, 2 sink covers, raised-panel refrigerator inserts, 2 throw pillows, flip-up countertop extension (26P, 32K, 35F)

GALLEY

Thermo-formed laminated countertops

2-door refrigerator/freezer

Microwave oven (26P, 30W, 32K)

Microwave oven w/range fan (35F, 36D)

3-burner range top w/storage below

Vented range hood (26P, 30W, 32K)

OPTIONAL EQUIPMENT

3-burner range w/oven

Microwave/convection oven (26P, 30W, 32K)

Microwave/convection oven w/range fan (35F, 36D)

BATH

Thermo-formed laminated countertop

Flexible showerhead

Textured glass shower door

Skylight

BEDROOM

Innerspring mattress

Bedsread, pillows and shams

Storage area below bed (NA 30W)

Bunk beds w/foam mattresses and privacy curtains (32K)

OPTIONAL EQUIPMENT

2 DVD players w/8.5" LCD monitors and headphones (32K bunk beds)

19" LCD TV w/cable wall input

EXTERIOR

Premium high-gloss sidewall skin

Main entrance w/screen door and shade

Automatic entrance door steps

Mud flaps

Porch light

OPTIONAL EQUIPMENT

Front protective mask

Powered patio awning

Powered patio awning w/Weather Max fabric and metal wrap (requires full-body paint)

Ladder

Entertainment Center: AM/FM stereo, CD player, remote, AC duplex, removable TV table, speakers and lockable compartment (26P, 30W, 32K)

Entertainment Center: 32" LCD TV w/remote, AM/FM stereo w/DVD player w/remote, speakers (35F, 36D)

HEATING & COOLING SYSTEM

14,800 BTU roof-mount air conditioner (26P, 30W)

Two high-efficiency roof-mount air conditioners w/energy management system (32K, 35F, 36D)

30,000 BTU low-profile furnace (26P, 30W)

35,000 BTU low-profile furnace (32K)

40,000 BTU low-profile furnace (35F, 36D)

OPTIONAL EQUIPMENT

A/C heat pump (26P, 30W)

Two high-efficiency A/C heat pumps (32K, 35F, 36D)

ELECTRICAL SYSTEM

AC/DC load center, 45-amp. converter/charger (26P, 30W)

AC/DC electrical distribution system, 45-amp. converter/charger (32K, 35F, 36D)

30-amp. power cord

PowerLine® energy management system (32K, 35F, 36D)

4,000-watt Cummins Onan® MicroQuiet™ gas generator (26P, 30W)

5,500-watt Cummins Onan Marquis Gold™ gas generator (32K, 35F, 36D)

2 deep-cycle Group 24 batteries

Battery disconnect system (chassis and coach)

Automatic dual battery charge control

Auxiliary start circuit

OPTIONAL EQUIPMENT

50-amp. power cord, shoreline/generator automatic changeover switch (32K, 35F, 36D)

1,000-watt AC/DC inverter w/remote panel

PLUMBING SYSTEM

Service Center: cable TV input, pressurized city water hookup w/diverter valve, drainage valves, portable satellite dish hookup, power cord, 10' sewer hose

6-gallon water heater

Heated holding-tank compartment

LP tank

On-demand water pump

TrueLevel™ holding-tank monitoring system

Winterization Package: water heater bypass valve and siphon tube

OPTIONAL EQUIPMENT

Exterior wash station w/lighted pump switch

6-gallon 110 V/LP water heater w/motoraid

SAFETY

Seat belts

Child seat tether anchor (forward facing dinette bench)

LP, smoke and carbon monoxide detectors

10 BC fire extinguisher

Ground fault interrupter

High-mount brake lamp

WARRANTY⁷

12-month/15,000-mile basic limited warranty,⁸ 36-month/36,000-mile limited warranty on structure,⁸ 10-year limited parts and labor warranty on roof skin⁸

- The height of each model is measured to the top of the tallest standard feature and is based on the curb weight of a typically equipped unit. The actual height of your vehicle may vary by several inches depending on chassis or equipment variations. Please check with your dealer for further information.
- Vista floorplans feature a wide-body design – over 96". In making your purchase decision, you should be aware that some states restrict access on some or all state roads to 96" in body width. Before making your purchase decision, you should confirm the road usage laws in the states of interest to you.
- The load capacity of your motor home is designated by weight, not by volume, so you cannot necessarily use all available space when loading your motor home.
- Capacities are based on measurements prior to tank installation. Slight capacity variations can result due to installation applications.
- Capacities shown are tank manufacturer's listed water capacity (WC). Actual filled LP capacity is 80% of listing due to overfilling prevention device on tank.
- Actual towing capacity is dependent on your particular loading and towing circumstances which includes the GVWR, GAWR, and GCWR as well as adequate trailer brakes. Please refer to the Operator's Manual of your vehicle for further towing information.
- See separate chassis warranty.
- See your dealer for complete warranty information.

NA Not Available

Not all items available in combination. See dealer for details.

Winnebago Industries'® continuing program of product improvement makes specifications, equipment, model availability, and prices subject to change without notice. Comparisons to other motor homes are based on the most recent information available at printing.

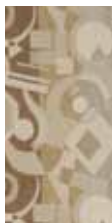
Décor

Choose from three fabric collections and three cabinet woods with satin nickel hardware.

Riviera Sand with Bark UltraLeather™



Main



Accent



UltraLeather



Bedspread



Carpet

Hearthstone with Marsh UltraLeather



Main



Accent



UltraLeather



Bedspread



Carpet

Winter Moss with Putty UltraLeather



Main



Accent



UltraLeather



Bedspread



Carpet



Coffee-Glazed Sierra Maple



Belmont Maple



Forest Cherry

Fabrics and carpets may change without notice or obligation.

Exteriors

Choose from standard or deluxe graphics or customize your look with one of four full-body paint options.



Black/Pewter/Gold
STANDARD GRAPHICS



Silver
DELUXE GRAPHICS



Moonstone
DELUXE GRAPHICS



Sterling
FULL-BODY PAINT



Paprika
FULL-BODY PAINT



Bronzemist
FULL-BODY PAINT



Black Garnet
FULL-BODY PAINT



THE MOST RECOGNIZED
NAME IN MOTOR HOMES™



Be Part of Something Special

WIT Club Winnebago owners are like family. Joining the Winnebago-Itasca Travelers Club is a great way to meet and travel with other Winnebago enthusiasts.

Members enjoy:

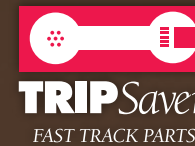
- Caravans and Rallies
- Local and State Group Activities
- RV Travel Benefits



Committed to Service

We back our motor homes with best-in-class support both before *and* after the sale:

- 12-month/15,000-mile basic limited warranty
- 36-month/36,000-mile warranty on structure
- 10-year standard limited parts-and-labor roof skin warranty
- Complimentary 24-hour roadside assistance program
 - RV Technical Assistance Hotline
 - RV Service Appointment Assistance
 - Emergency Trip Interruption
 - Emergency Message Service
 - Nationwide Trip Routing
 - Fee-Free Travelers Cheques



- TripSaver Fast Track Parts guarantees that in-stock warranty parts ship directly to your dealer within 24 hours
- National dealer service network



GoWinnebago.com Visit us on the web for more information on all of our motor homes, the latest product updates and a host of web-exclusive content.



NYSE listing: WGO

For Sales and Service Information Contact:

Colton RV & Marine
3122 Niagara Falls Blvd
North Tonawanda, NY 14120
(716) 694-0188
www.ColtonRV.com

Colton RV
3443 Southwestern Blvd
Orchard Park, NY 14127
(716) 957-3250
www.Coltonrv.com

Printed in USA

Seat belts are your most important hookup. Always buckle up.

© 2010 Winnebago Industries, Inc.