

ROCKWOOD  
ROO, MINI LITE, ULTRA LITE &  
SIGNATURE TRAVEL TRAILERS

# ROCKWOOD

**ROO, MINI LITE, ULTRA LITE &  
SIGNATURE TRAVEL TRAILERS**

PROVIDING OUTDOOR FUN SINCE 1974.





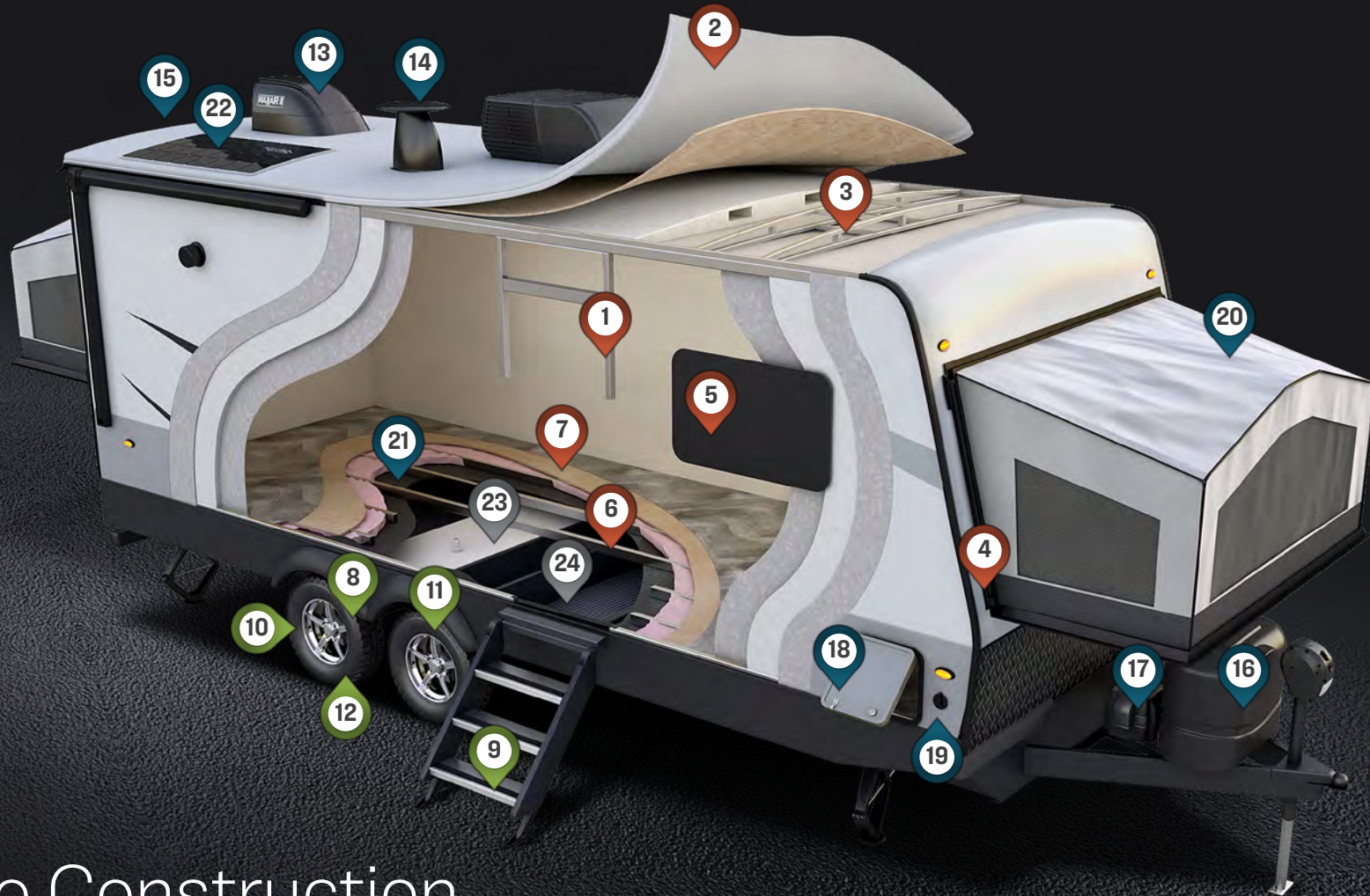
# OVER 45 YEARS OF EXCELLENCE

## **FROM HUMBLE BEGINNINGS, ROCKWOOD HAS EMERGED AS AN INDUSTRY LEADER IN THE MANUFACTURING OF LIGHT WEIGHT TRAVEL TRAILERS, FIFTH WHEELS, AND CAMPING TRAILERS.**

Located in Millersburg, IN since 1974, Rockwood has been supported by this community and the local families residing there. These families have helped provide the hundreds of workers that have brought their dedication to quality workmanship, respect for their fellow workers and a commitment to an uncompromising work ethic to make a major contribution to this company's success. Founded on the principle of providing superior value and service while remaining in tune with customer's preferences, Rockwood has become the ultimate luxury product in the light weight travel trailer market, proudly showcasing more innovative floor plans, appealing features and refined interior appointments than any others in its class.

**TODAY, ROCKWOOD REMAINS COMMITTED TO INSURING THAT OUR CUSTOMERS ENJOY THEIR CAMPING EXPERIENCES.** Through the utilization of our experienced work force, "state of the art" lamination facility, modern production plants and detailed assembly processes our aim is to continue to provide our customers with the best built product possible at an unmatched value.





# Roo Construction

## SUPERIOR CONSTRUCTION

- 1 6 Sided Full Aluminum Frame
- 2 Fully Laminated One-Piece Walkable Roof
- 3 Aluminum Truss AC Bracing
- 4 Easy Reach Latch System
- 5 Frameless Windows
- 6 Aluminum Floor Joists
- 7 5/8" Tongue & Groove Plywood Floor

## SAFETY STANDARDS

- 8 Dexter Torsion Axles
- 9 MORryde Strut Assist Steps (N/A 19/183)
- 10 TST Tire Pressure Monitor System
- 11 Goodyear Endurance Tires
- 12 Nitrogen Filled Tires

## STANDARD FEATURES

- 13 2 Maxxair Fans w/ Covers
- 14 Teton All In One WiFi Booster w/ LTE Prep & Antenna
- 15 Back Up Camera Prep
- 16 Double 20# LP Bottles
- 17 Double Battery Boxes
- 18 Key-Alike Locks
- 19 Solar Prep On Side
- 20 5 Year Tent Warranty

- 21 12y Thermostatically Controlled Heated Tanks
- 22 190w Solar Panel w/ 1000w Inverter

## CLIMATE PROTECTION PACKAGE

- 23 4" Block Foam Insulated Roof
- 24 Radiant Foil Insulated Underbelly



235S



235S

## Roo

**A VALUE THAT'LL MAKE YOU JUMP!** We have a trailer just for you. Whether you are interested in the expanded interior space provided by the spacious drop down bunks with heated mattresses and the feel of a traditional trailer, the Rockwood Roo will deliver the quality and amenities you expect. Rockwood brings the necessities of residential living on the campsite



**19**

EXPANDABLE

UVW: 4298 HITCH: 434 AXLE: 3826 LENGTH: 22' OPEN LENGTH: 26' 5"  
 CCC: 1416 WIDTH: 8' HEIGHT: 10' 6" FRESH: 54 gal GRAY: 30 gal BLACK: 30 gal



**183**

EXPANDABLE

UVW: 4259 HITCH: 450 AXLE: 3771 LENGTH: 21' 2" OPEN LENGTH: 25' 7"  
 CCC: 1471 WIDTH: 8' HEIGHT: 10' 6" FRESH: 54 gal GRAY: 30 gal BLACK: 30 gal



**21SS**

EXPANDABLE

UVW: 5095 HITCH: 556 AXLE: 4501 LENGTH: 22' 10" OPEN LENGTH: 27' 2"  
 CCC: 1461 WIDTH: 8' HEIGHT: 10' 11" FRESH: 54 gal GRAY: 30 gal BLACK: 30 gal



**233S**

EXPANDABLE

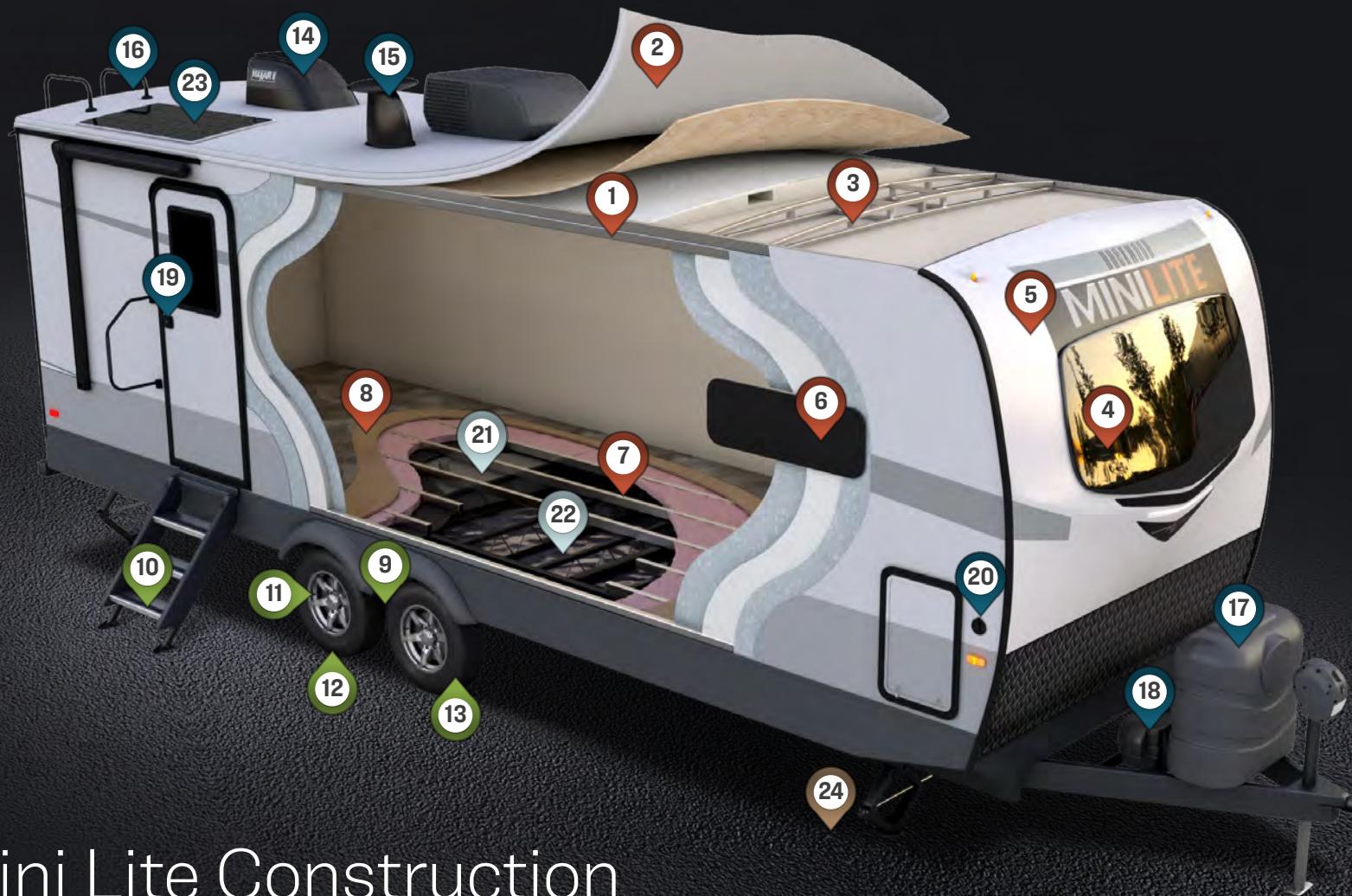
UVW: 5111 HITCH: 652 AXLE: 4421 LENGTH: 24' 10" OPEN LENGTH: 29' 7"  
 CCC: 1541 WIDTH: 8' HEIGHT: 10' 6" FRESH: 54 gal GRAY: 30 gal BLACK: 30 gal



**235S**

EXPANDABLE

UVW: 5639 HITCH: 738 AXLE: 4863 LENGTH: 24' 10" OPEN LENGTH: 29' 7"  
 CCC: 1259 WIDTH: 8' HEIGHT: 10' 11" FRESH: 54 gal GRAY: 30 gal BLACK: 30 gal



# Mini Lite Construction

## ▶ SUPERIOR CONSTRUCTION

- 1 6 Sided Full Aluminum Frame
- 2 Fully Laminated One-Piece Walkable Roof
- 3 Aluminum Truss Roof Bracing
- 4 Automotive Glass Windshield
- 5 Painted Fiberglass Front Cap w/ Clear Coat
- 6 Frameless Windows
- 7 Aluminum Floor Joists
- 8 5/8" Tongue & Groove Plywood Floor

## ▶ SAFETY STANDARDS

- 9 Dexter Torsion Axles
- 10 MORryde Strut Assist Steps (NA 2109S)
- 11 TST Tire Pressure Monitor System
- 12 Goodyear Endurance Tires
- 13 Nitrogen Filled Tires

## ▶ STANDARD FEATURES

- 14 Maxxair Fan w/ Cover
- 15 Teton All In One Wifi Booster w/ LTE Prep & Antenna
- 16 Back Up Camera Prep
- 17 Double 30# LP Bottles
- 18 Double Battery Boxes
- 19 Key-Alike Locks
- 20 Solar Prep On Side
- 23 190w Solar Panel w/ 1000w Inverter

## ▶ CLIMATE PROTECTION PACKAGE

- 21 12v Thermostatically Controlled Heated Tanks
- 22 Radiant Foil In Underbelly, Front Caps & Slide Out Floors

## ▶ OPTIONAL FEATURES

- 24 Power Stabilizers (Not Pictured)



## 2104S

MURPHY BED

UVW: 4977 HITCH: 681 AXLE: 4237 LENGTH: 22' 4" CCC: 1864  
 WIDTH: 8' HEIGHT: 10' 11" FRESH: 54 gal GRAY: 30 gal BLACK: 30 gal



## 2109S

FRONT BED

UVW: 4493 HITCH: 557 AXLE: 3877 LENGTH: 22' 4" CCC: 1344  
 WIDTH: 8' HEIGHT: 10' 3" FRESH: 54 gal GRAY: 30 gal BLACK: 30 gal



## 2204S

TWIN BED

UVW: 4975 HITCH: 720 AXLE: 4196 LENGTH: 23' 11" CCC: 1905  
 WIDTH: 8' HEIGHT: 10' 11" FRESH: 54 gal GRAY: 30 gal BLACK: 30 gal



## 2205S

FRONT BED

UVW: 5132 HITCH: 634 AXLE: 4439 LENGTH: 23' 10" CCC: 1662  
 WIDTH: 8' HEIGHT: 10' 11" FRESH: 54 gal GRAY: 30 gal BLACK: 30 gal



## 2506S

FRONT KITCHEN

UVW: 5528 HITCH: 814 AXLE: 4655 LENGTH: 25' 11" CCC: 1446  
 WIDTH: 8' HEIGHT: 10' 11" FRESH: 54 gal GRAY: 60 gal BLACK: 30 gal

# Mini Lite

TOWING A TRAILER DOESN'T REQUIRE A TRUCK ANYMORE. When towing size and weight are your focus, you will find that these specially designed Mini Lite models offer flexible floor plans that provide you with more comfort and amenities than you would expect — all within the towing capacity of many SUV's.



The Unloaded Vehicle Weight (UVW) listed represents the weight of one trailer with that model's standard equipment including the content of specified option packages. \* See back cover for further specification definitions.



**2514S** AUTUMN WOOD & CHOCOLATE



**2514S** AUTUMN WOOD & CHOCOLATE



**2514S** AUTUMN WOOD & STONE



**2514S** NEWPORT ASH & STONE



**2514S** NEWPORT ASH & CHOCOLATE



**2514S** NEWPORT ASH & CHOCOLATE



**2507S**  
MURPHY BED

UVW: 5754 HITCH: 590 AXLE: 5105 LENGTH: 25'10" CCC: 1836  
 WIDTH: 8' HEIGHT: 10'11" FRESH: 54 gal GRAY: 30 gal BLACK: 30 gal



**2509S**  
BUNK HOUSE

UVW: 5440 HITCH: 773 AXLE: 4667 LENGTH: 25'11" CCC: 1493  
 WIDTH: 8' HEIGHT: 10'11" FRESH: 54 gal GRAY: 30 gal BLACK: 30 gal



**2511S**  
FRONT BEDROOM

UVW: 5748 HITCH: 824 AXLE: 4865 LENGTH: 25'10" CCC: 1236  
 WIDTH: 8' HEIGHT: 10'11" FRESH: 54 gal GRAY: 60 gal BLACK: 30 gal



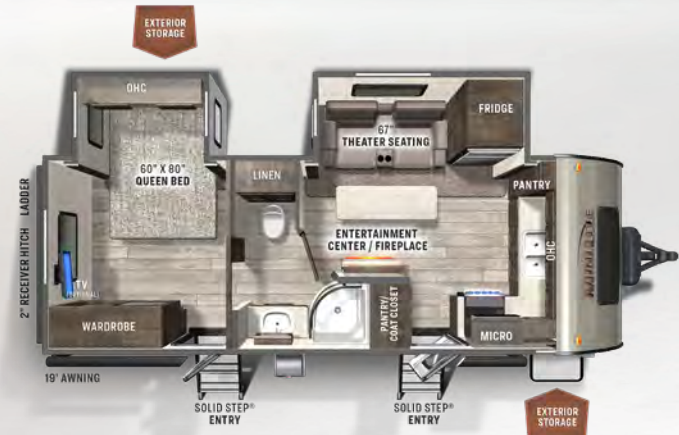
**2513S**  
REAR LIVING

UVW: 5971 HITCH: 660 AXLE: 5252 LENGTH: 25'10" CCC: 1689  
 WIDTH: 8' HEIGHT: 10'11" FRESH: 54 gal GRAY: 30 gal BLACK: 30 gal



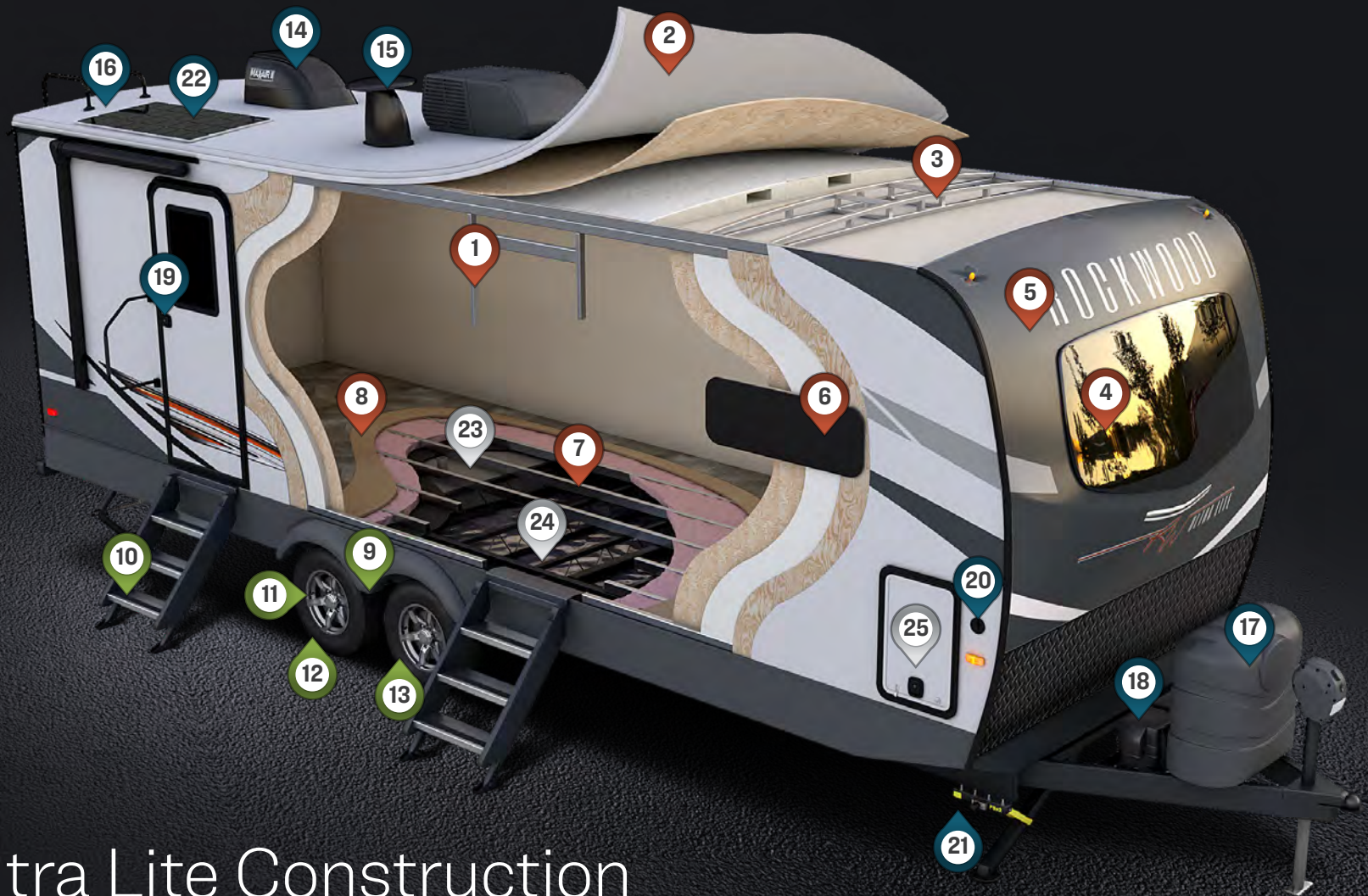
**2514S**  
MURPHY BED

UVW: 5675 HITCH: 646 AXLE: 4970 LENGTH: 25'10" CCC: 1971  
 WIDTH: 8' HEIGHT: 10'11" FRESH: 54 gal GRAY: 30 gal BLACK: 30 gal



**2516S**  
FRONT KITCHEN

UVW: 6049 HITCH: 772 AXLE: 5218 LENGTH: 25'11" CCC: 1723  
 WIDTH: 8' HEIGHT: 10'11" FRESH: 54 gal GRAY: 60 gal BLACK: 30 gal



# Ultra Lite Construction

## SUPERIOR CONSTRUCTION

- 1** 6 Sided Full Aluminum Frame
- 2** Fully Laminated One-Piece Walkable Roof
- 3** Aluminum Truss Roof Bracing
- 4** Automotive Glass Windshield
- 5** Painted Fiberglass Front Cap w/ Clear Coat
- 6** Frameless Windows
- 7** Aluminum Floor Joists
- 8** 5/8" Tongue & Groove Plywood Floor

## SAFETY STANDARDS

- 9** Dexter Torsion Axles
- 10** MORryde Strut Assist Steps
- 11** TST Tire Pressure Monitor System
- 12** Goodyear Endurance Tires
- 13** Nitrogen Filled Tires

## STANDARD FEATURES

- 14** Maxxair Fan w/ Cover
- 15** Teton All In One Wifi Booster w/ LTE Prep & Antenna
- 16** Back Up Camera Prep
- 17** Double 30# LP Bottles
- 18** Double Battery Boxes
- 19** Key-Alike Locks
- 20** Solar Prep On Side

## CLIMATE PROTECTION PACKAGE

- 21** Power Stabilizers
- 22** 190w Solar Panel w/ 1000w Inverter
- 23** 12v Thermostatically Controlled Heated Tanks
- 24** Radiant Foil In Underbelly, Front Caps & Slide Floors
- 25** Insulated Slam-Latch Baggage Doors



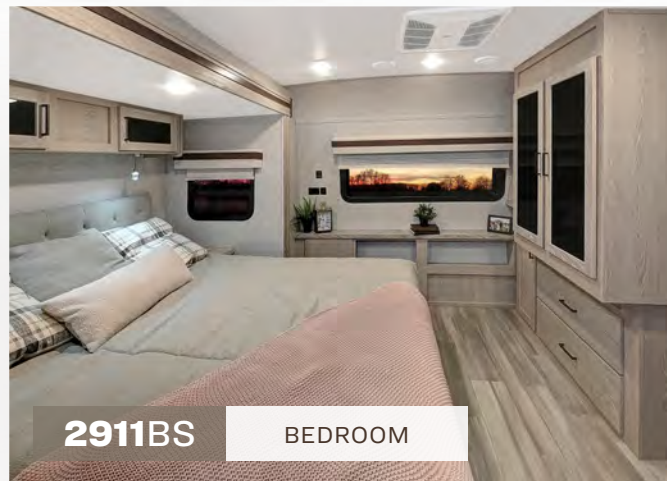
**2911BS** NEWPORT ASH & STONE



**2911BS** BATHROOM



**2911BS** OUTSIDE KITCHEN



**2911BS** BEDROOM



**2911BS** BUNK ROOM

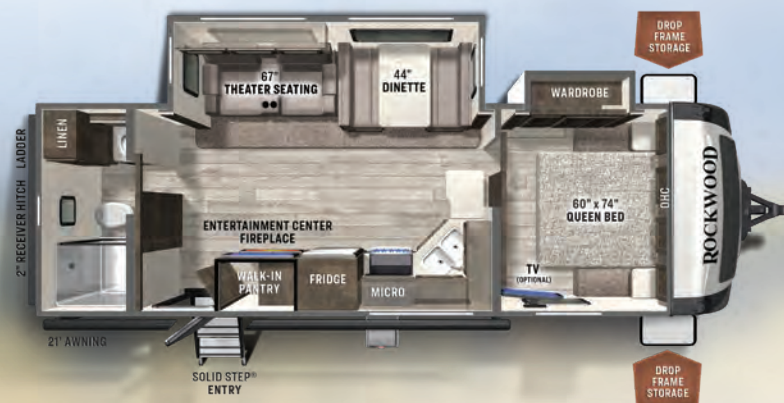


**2911BS**

NEWPORT ASH & STONE

# Ultra Lite

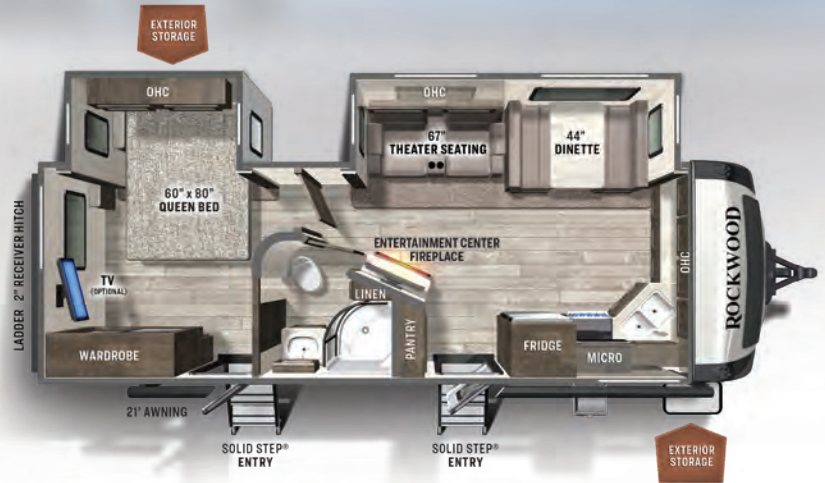
**YOU'LL LOVE WHAT YOU FIND IN OUR FLOOR PLANS.** Our trailers are packed full of quality features in order to bring to you one of the best values in the light weight market. There are spacious flush floor slides, comfortable stylish sofas and wide dinettes. Our Ultra Lite series offers lots of room and amenities while still being a 1/2 ton towable Travel Trailer.



**2606WS**

FRONT BEDROOM

UVW: 6158 HITCH: 908 AXLE: 5191 LENGTH: 29' 9" CCC: 2550  
 WIDTH: 8' HEIGHT: 11' 2" FRESH: 54 gal GRAY: 90 gal BLACK: 45 gal



**2608BS**

FRONT KITCHEN

UVW: 6836 HITCH: 946 AXLE: 5831 LENGTH: 29' 8" CCC: 1910  
 WIDTH: 8' HEIGHT: 11' 2" FRESH: 54 gal GRAY: 90 gal BLACK: 45 gal



**2613BS**

REAR LIVING

UVW: 6614 HITCH: 915 AXLE: 5640 LENGTH: 29' 9" CCC: 2101  
 WIDTH: 8' HEIGHT: 11' 2" FRESH: 54 gal GRAY: 90 gal BLACK: 45 gal



## 2614BS

REAR KITCHEN

UVW: 6988 HITCH: 796 AXLE: 6133 LENGTH: 29' 9" CCC: 1608  
 WIDTH: 8' HEIGHT: 11' 2" FRESH: 54 gal GRAY: 90 gal BLACK: 45 gal



## 2706WS

BUNK HOUSE

UVW: 7310 HITCH: 921 AXLE: 6330 LENGTH: 32' 10" CCC: 1411  
 WIDTH: 8' HEIGHT: 11' 2" FRESH: 54 gal GRAY: 90 gal BLACK: 45 gal



## 2720IK

REAR KITCHEN

UVW: 8324 HITCH: 1035 AXLE: 7230 LENGTH: 33' 1" CCC: 1511  
 WIDTH: 8' HEIGHT: 11' 3" FRESH: 54 gal GRAY: 90 gal BLACK: 45 gal



## 2906BS

REAR LIVING

UVW: 8559 HITCH: 1100 AXLE: 7400 LENGTH: 35' 5" CCC: 1341  
 WIDTH: 8' HEIGHT: 11' 3" FRESH: 54 gal GRAY: 45 gal BLACK: 45 gal



## 2911BS

BUNK HOUSE

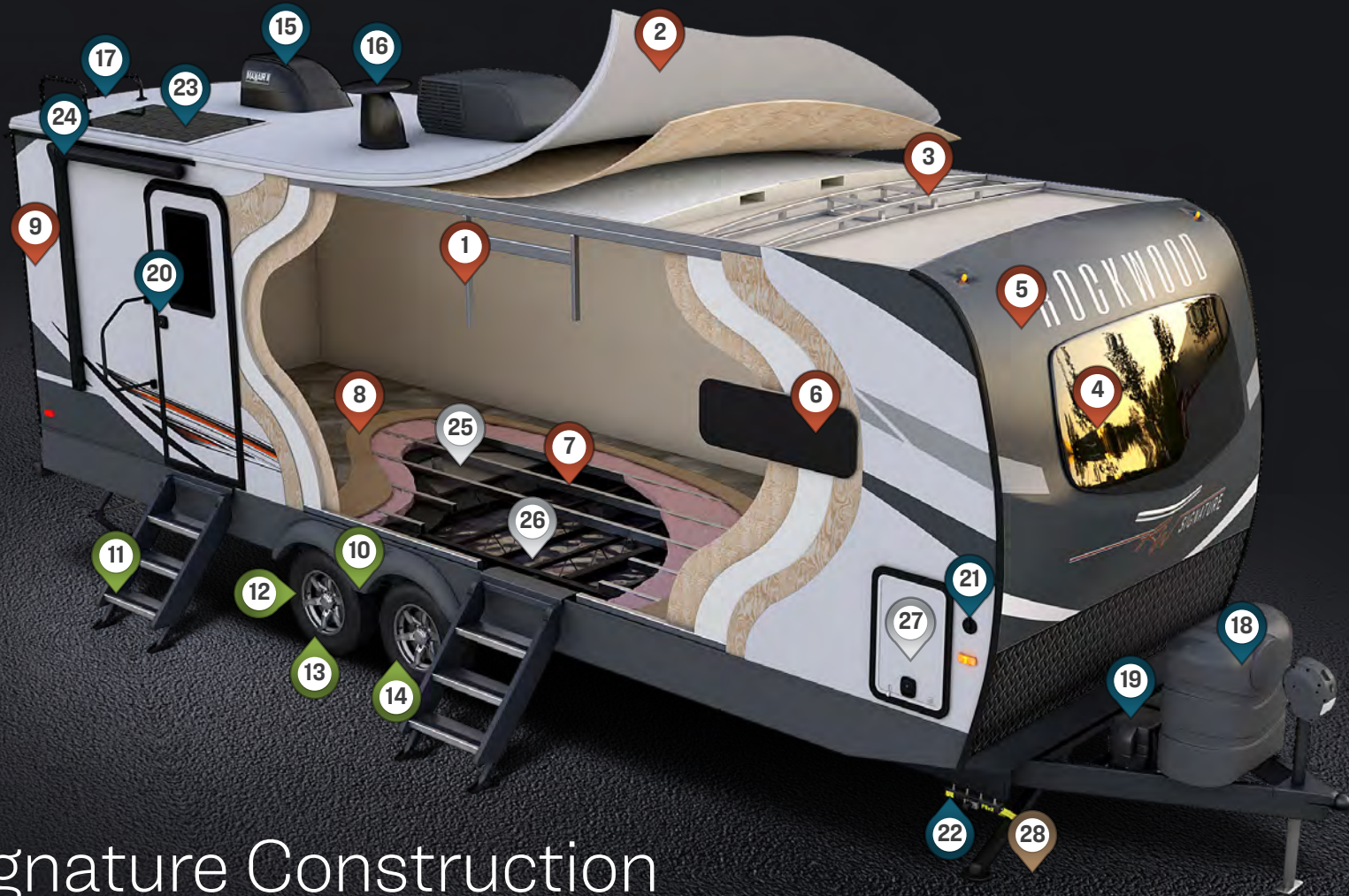
UVW: 7605 HITCH: 1038 AXLE: 6508 LENGTH: 35' 5" CCC: 2233  
 WIDTH: 8' HEIGHT: 11' 2" FRESH: 54 gal GRAY: 45 gal BLACK: 45 gal



## 2912BS

FRONT BEDROOM

UVW: 7854 HITCH: 952 AXLE: 6843 LENGTH: 35' 2" CCC: 1898  
 WIDTH: 8' HEIGHT: 11' 2" FRESH: 54 gal GRAY: 90 gal BLACK: 45 gal



# Signature Construction

## ▶ SUPERIOR CONSTRUCTION

- 1 6 Sided Full Aluminum Frame
- 2 Fully Laminated One-Piece Walkable Roof
- 3 Aluminum Truss Roof Bracing
- 4 Automotive Glass Windshield
- 5 Painted Fiberglass Front Cap w/ Clear Coat
- 6 Frameless Windows
- 7 Aluminum Floor Joists
- 8 5/8" Tongue & Groove Plywood Floor
- 9 High Gloss Fiberglass

## ▶ SAFETY STANDARDS

- 10 Dexter Torsion Axles
- 11 MORryde Strut Assist Steps
- 12 TST Tire Pressure Monitor System
- 13 Goodyear Endurance Tires
- 14 Nitrogen Filled Tires

## ▶ STANDARD FEATURES

- 15 Maxxair Fan w/ Cover
- 16 Teton All In One Wifi Booster w/ LTE Prep & Antenna

- 17 Back Up Camera Prep
- 18 Double 30# LP Bottles
- 19 Double Battery Boxes
- 20 Key-Alike Locks
- 21 Solar Prep On Side
- 22 PSX2 Power Stabilizers
- 23 190w Solar Panel w/ 1000w Inverter (Opt 8332SB)
- 24 Shielded Awning Covers

## ▶ CLIMATE PROTECTION PACKAGE

- 25 12v Thermostatically Controlled Heated Tanks
- 26 Radiant Foil In Underbelly, Front Caps & Slide Out Floors
- 27 Insulated Slam Latch Baggage Doors

## ▶ OPTIONAL FEATURES

- 28 Electric Auto-leveling



**8263MBR**

**KITCHEN**



**8263MBR**

**BATHROOM**

## Signature

**BEAUTIFUL SPACIOUS INTERIORS COME STANDARD.** The Signature series has many outstanding features to enhance your camping experience. The open floorplans and generous storage space allows extra room for those extra things you want to bring along. Sleeping on the comfortable bed, you'll forget you were in the great outdoors. The spacious interior and picturesque view through the many windows enable you to experience your surroundings in the comfort of your Signature travel trailer.



**8263MBR**

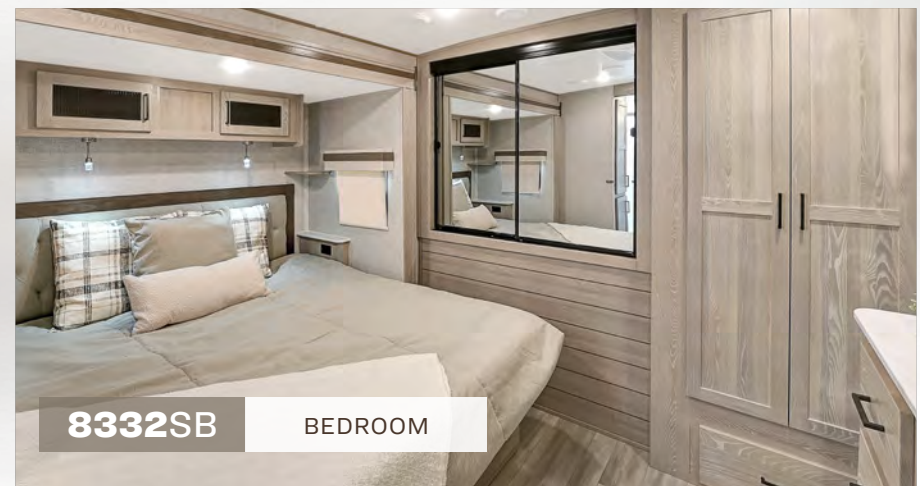
**SUITE SERIES**

UVW: 7809 HITCH: 1065 AXLE: 6685 LENGTH: 29'11" CCC: 2056  
 WIDTH: 8' HEIGHT: 11'7" FRESH: 54 gal GRAY: 80 gal BLACK: 40 gal



**8332SB**

**NEWPORT ASH & STONE**



**8332SB**

**BEDROOM**

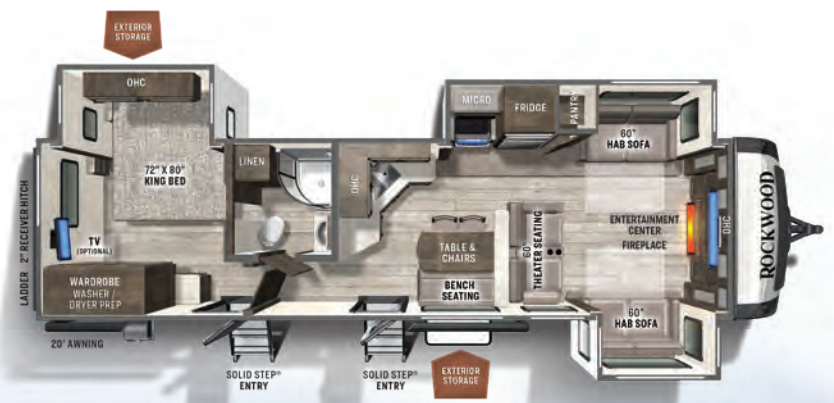




## 8262RBS

SUITE SERIES

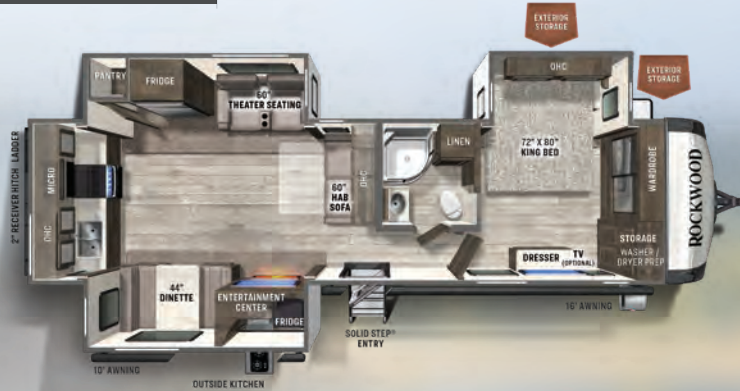
UVW: 7709 HITCH: 1070 AXLE: 6580 LENGTH: 29' 11" CCC: 2161  
 WIDTH: 8' HEIGHT: 11' 7" FRESH: 54 gal GRAY: 80 gal BLACK: 40 gal



## 8324SB

FRONT LIVING

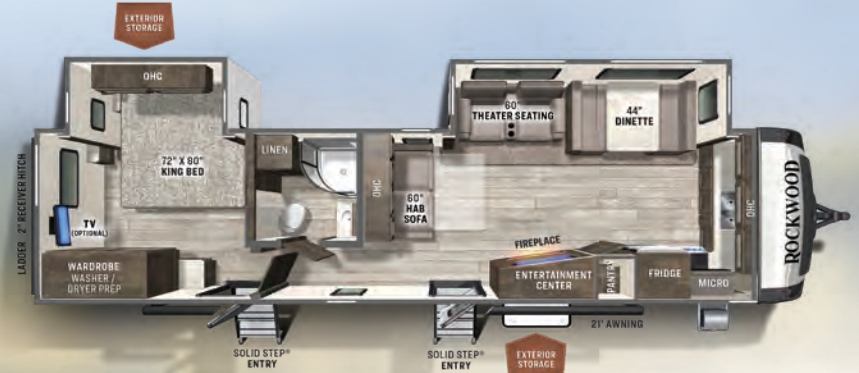
UVW: 9254 HITCH: 1115 AXLE: 8080 LENGTH: 36' 8" CCC: 1861  
 WIDTH: 8' HEIGHT: 11' 7" FRESH: 54 gal GRAY: 120 gal BLACK: 50 gal



## 8332SB

REAR KITCHEN

UVW: 9444 HITCH: 1130 AXLE: 8255 LENGTH: 36' 8" CCC: 1686  
 WIDTH: 8' HEIGHT: 11' 7" FRESH: 54 gal GRAY: 110 gal BLACK: 50 gal



## 8335SB

FRONT KITCHEN

UVW: 8327 HITCH: 1057 AXLE: 7211 LENGTH: 36' 8" CCC: 2730  
 WIDTH: 8' HEIGHT: 11' 7" FRESH: 54 gal GRAY: 130 gal BLACK: 50 gal



## 8336BH

BUNK HOUSE

UVW: 9669 HITCH: 1320 AXLE: 8290 LENGTH: 36' 8" CCC: 1651  
 WIDTH: 8' HEIGHT: 11' 7" FRESH: 54 gal GRAY: 130 gal BLACK: 50 gal

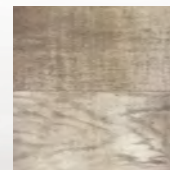
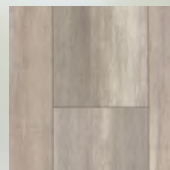
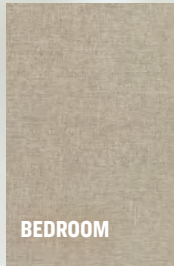
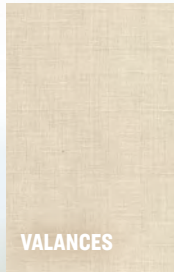


## 8337RL

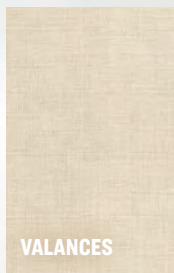
REAR LIVING

UVW: 9209 HITCH: 1315 AXLE: 7835 LENGTH: 36' 8" CCC: 2106  
 WIDTH: 8' HEIGHT: 11' 7" FRESH: 54 gal GRAY: 120 gal BLACK: 50 gal

# Chocolate



# Stone



## MONITOR YOUR RV FROM YOUR DEVICES

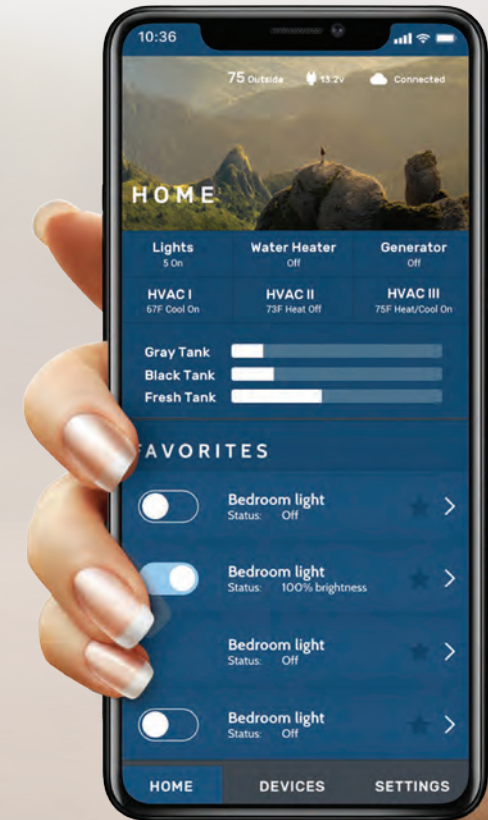
Your RV is equipped with OneControl. This WiFi app-based interface provides comfort and convenience to control and monitor your RV's functions. With the WeRV app you can control your lights, slides and awning from your fingertips.

For a complete list of control capabilities, please visit [lippert.com/onecontrol](http://lippert.com/onecontrol)

**Whenever, wherever  
we make your  
experience better.**



Scan  
for more  
information



# Rockwood Warranty. Our Promise.

**FOR DETAILS ON ROCKWOOD'S COMPLETE WARRANTY PROGRAM, SEE YOUR ROCKWOOD DEALER.** When it comes to backing products with the same quality and commitment it does when it begins the manufacturing process, the only name you have to remember when you're looking for a recreational vehicle is Rockwood. Rockwood offers the following additional limited warranties to the original purchasers. Consult written warranty for details.

1. Twelve-year vinyl roof warranty.
2. Two-year fiberglass warranty.
3. Ten-year Torflex® axle warranty.
4. One-year bumper to bumper warranty.
5. Five-year tent warranty



## 24/7 EMERGENCY ROADSIDE ASSISTANCE WITH VEHICLE PURCHASE\*

TOWING	WINCH-OUT
JUMP-STARTS	MOBILE MECHANIC
TIRE CHANGES	TECHNICAL
FLUID DELIVERY	SUPPORT
LOCKOUT	DEALER LOCATOR
SERVICE	SERVICES



\*VALID FOR 1 YEAR FROM DATE OF PURCHASE



## PRE-DELIVERY INSPECTION FACILITY

20,000 square feet of quality assurance. The bare essentials for a premium product. This state-of-the-art facility gives immediate daily feedback to production for quality assurance in every unit built.

## CUSTOMER SATISFACTION



[www.ForestRiverBuyLocal.com](http://www.ForestRiverBuyLocal.com)

**FREE MEMBERSHIP**  
to Forest River Owners' Group

[www.forestriverfrog.com](http://www.forestriverfrog.com)



**Specification Definitions :: GVWR (Gross Vehicle Weight Rating)** - is the maximum permissible weight of the unit when fully loaded. It includes all weights, inclusive of all fluids, cargo, optional equipment and accessories. For safety and product performance do NOT exceed the GVWR. // **GAWR (Gross Axle Weight Rating)** - is the maximum permissible weight, including cargo, fluids, optional equipment and accessories that can be safely supported by a combination of all axles. // **UVW (Unloaded Vehicle Weight)** - is the typical weight of the unit as manufactured at the factory. It includes all weight at the unit's axle(s) and tongue or pin and LP Gas. The UVW does not include cargo, fresh potable water, additional optional equipment or dealer installed accessories. \*Estimated average based on standard build optional equipment. // **CCC (Cargo Carrying Capacity)\*\*** - is the amount of weight available for fresh potable water, cargo, additional optional equipment and accessories. CCC is equal to GVWR minus UVW. Available CCC should accommodate fresh potable water (8.3 lbs per gallon). Before filling the fresh water tank, empty the black and gray tanks to provide for more cargo capacity. \*\*Estimated average based on standard build optional equipment. // Each Forest River RV is weighed at the manufacturing facility prior to shipping. A label identifying the unloaded vehicle weight of the actual unit and the cargo carrying capacity is applied to every Forest River RV prior to leaving our facilities. The load capacity of your unit is designated by weight, not by volume, so you cannot necessarily use all available space when loading your unit. // All information contained in this brochure is believed to be accurate at the time of publication. However, during the model year, it may be necessary to make revisions and Forest River, Inc., reserves the right to make all such changes without notice, including prices, colors, materials, equipment and specifications as well as the addition of new models and the discontinuance of models shown in this brochure. Therefore, please consult with your Forest River dealer and confirm the existence of any materials, design or specifications that are material to your purchase decision. Litho. U.S.A. FOR 1766 P&W: 2021.02.11

Look for our other popular lines of Rockwood trailers.



ROCKWOOD GEO PROS



ROCKWOOD FIFTH WHEELS



ROCKWOOD TENT CAMPERS



**Learn More**  
Scan this barcode using a QR Reader on your smart phone to learn more about Forest River.



A Berkshire Hathaway company.

YOUR **ROCKWOOD** DEALER

Colton RV & Marine  
3122 Niagara Falls Blvd  
North Tonawanda, NY 14120  
(716) 694-0188  
[www.ColtonRV.com](http://www.ColtonRV.com)

Colton RV  
3443 Southwestern Blvd.  
Orchard Park, NY 14127  
(716) 957-3250  
[www.Coltonrv.com](http://www.Coltonrv.com)



FOLLOW THE JOURNEY



Follow us on these media platforms @RockwoodRvs

201 WEST ELM MILLERSBURG, IN 46543 [WWW.FORESTRIVERINC.COM/ROCKWOOD](http://WWW.FORESTRIVERINC.COM/ROCKWOOD) 574.642.2640