

The logo is a silver, oval-shaped metallic emblem with a brushed metal texture. It is centered horizontally and partially overlaps a horizontal line that divides the image into a yellow upper half and a black lower half. The text "MOUNTAIN AIRE" is inscribed on the emblem.

MOUNTAIN  
AIRE

NEW MAR LUXURY 2007



PRESENTING THE 2007 MOUNTAIN AIRE—THE COMPLETELY REINVENTED LUXURY COACH THAT'S SLEEKER, BOLDER AND MORE POWERFUL THAN EVER.

The latest addition to Newmar's luxury line combines power and performance with contemporary, luxurious living. Born to fulfill every wish on both his and her lists, Mountain Aire offers brute strength and impressive construction that inspire him to stand taller. Plus, simple sophistication and cosmopolitan features to complement her distinctive tastes.

YOUR NEW *lifestyle* AWAITS.



The image shows the interior of a luxury motorhome. The space is characterized by extensive wood paneling on the walls and ceiling. On the left, there is a large white sofa with red and patterned throw pillows. Behind it is a kitchen area with wooden cabinets, a microwave, a sink, and a countertop with various items. In the center, a hallway leads to a bedroom with a bed. On the right, there is another large white sofa with red and patterned throw pillows. Behind it is a dining area with a table and chairs. A large flat-screen TV is mounted on the wall in the center. The floor is covered with a dark, patterned carpet. The overall atmosphere is warm and luxurious.

LINGER A LITTLE  
LONGER—THE  
*luxury* BECOMES YOU.

Step inside your new lifestyle and let the euphoria take over. Mountain Aire's imaginative conveniences and ultramodern ambience will awaken feelings you never knew existed.

It's never been so tempting to spend your evenings at home. Spacious floorplans, with up to four innovative slideouts, offer plenty of room to entertain or lounge comfortably.

Indulge in posh features, including the 32" Sony® flatscreen LCD TV, top-of-the-line sound system and optional electric fireplace.

Bask in your new luxury coach's smart, worldly appearance. Mountain Aire's European-inspired Villa® furniture and sleek silver fixtures are a feast for the eyes.



## TAKE THE HIGHLY *stylish* ROAD.

Both Mars and Venus gravitate toward the boldly reinvented Mountain Aire. It offers refined luxury from the inside out.

Thanks to aerodynamic new front and rear caps, Mountain Aire's magnificent exterior presence will garner attention wherever you travel. The Full Paint Masterpiece Finish™ and high-gloss Super Clear Coat with Diamond Shield Front Protective Film will protect its remarkable exterior from the wear and tear of the elements.

Enjoy an unobstructed view of the road you now command. Mountain Aire's innovative, one-piece windshield and large convex exterior mirrors with remote control, defrost and turn signals increase your driving visibility and make your time behind the wheel stress-free.

# EMBRACE CONTEMPORARY LIVING AT ITS *finest.*

Mountain Aire's kitchen and dining areas were designed to cater to the needs of your everyday life.

Cooking will be infinitely easier with conveniences that include intelligent stainless appliances, pantry with pull-out shelves, and an optional in-drawer dishwasher and convection oven.

Have a seat around the exquisite Corian® table. The picturesque atmosphere is sure to enhance any meal.

This luxury coach owes its elegance to Newmar's impeccably handcrafted hardwood cabinets. Anchored by stunning Corian® countertops, the cabinets' clean, geometric design will look remarkable for years to come. Choose from one of four beautiful options below.



## ACCELERATE YOUR *expectations.*

Newmar engineers put power at your fingertips.

Built on a Spartan K2® chassis with a roaring 450-hp Cummins® diesel engine, Mountain Aire is ready to respond to your every demand. Revolutionary, patented Comfort Drive® offers exclusive power steering capability and allows you to maneuver effortlessly. It's a Newmar Luxury standard you won't find anywhere else.

Mountain Aire's spacious driver's command center was designed to make your journey safe and comfortable.

A new, stylish dash puts controls, including a large rearview color monitor system, within easy reach. Plus, heated ultraleather driver and passenger seats—complete with an eight-way power control and power lumbar support—and an AM/FM radio with a six-disc changer, allow you to sit back and relax as you tame the open road.

MOUNTAIN AIRE





## ESCAPE TO A WORLD OF *splendor.*

Slip into your own private world of elegance. Simply close the door to your master bedroom and marvel at the tranquil space where your dreams have room to grow.

Notice Mountain Aire's thoughtful touches. A lighted cedar-lined closet attractively conceals your wardrobe, and under-bed storage and cabinets above the headboard provide optimal space for your belongings.

The focal point of your personal retreat is the luxurious king-sized bed with cozy pillowtop mattress. Accessorized by a sumptuous quilted bedspread, matching pillow shams and accent pillows, it's the ideal setting for relaxation and rejuvenation. The Mountain Aire features four stunning options for fabrics and textures (shown below).



Tranquil



Eclipse



Raven



Tussock

STANDARD FEATURES

Chassis

- Spartan® K2 Chassis with IFS
- Cummins® ISM 450 hp
- Two-Stage Engine Compression Brake
- Adjustable Pedals
- Tag Axles on 41' & 45' Floorplans
- Coated Aluminum Wheels
- Four-Point Hydraulic Leveling Jacks with Automatic Control
- Trw Comfort Drive® Steering
- Cruise Control
- Manual Tilt & Telescope Steering with VIP Smart Wheel
- Recessed Fuel Fills with Crossover to Fill from Either Side
- Back-Up Alarm
- Anti-Lock Braking System
- Electronic Chassis Information Display in Dash

Air Conditioning and Heating

- Two 15M Penguin™ Heat Pump Central Air Conditioners (41' Floorplans)
- Three 15M Penguin™ Heat Pump Central Air Conditioners (45' Floorplans)
- Hydro Hot Hydronic Zone Heating System
- Air Conditioning Condensation Lines through Rear Cap of Coach
- Dash Heater & High-Output Air Conditioner
- Propane Leak Detector

Appliances and Accessories

- 30" Convection Stainless Steel Microwave Oven
- Two-Burner Recessed Cooktop
- Polished Corian® Range Cover
- Dometic® 13.8 Cu. Ft. Refrigerator with Auto Defrost & Icemaker
- One-Piece Washer/Dryer Prep\*
- Sony® 32" Flatscreen LCD Color TV in Living Area
- Sony® Flatscreen LCD Color TV in Bedroom
- AM/FM Dash Radio with 6-Disc CD Player
- Rearview Color Monitor System
- Surround Sound System with AM/FM Radio, CD & DVD Player
- Audio/Video Switch System with Remote
- TV Antenna with Power Booster with 1 Exterior Jack & 2 Interior Jacks
- \*TV Antenna is Up" Warning Light
- Satellite Prep—Phone, TV Jack & Receptacle

- Telephone Connection with Phone Jacks in Living & Dash Area
- Two Bedroom Radio Speakers with On/Off Switch
- Safe
- Roof-Mounted Air Horns
- 10-Bc Fire Extinguisher, Carbon Monoxide & Smoke Detectors

Cabinets and Furniture

- Summer Maple Hardwood Unitized Cabinets with Full Overlay Doors
- Residential-Style Full Extension Ball Bearing Drawer Guides
- Concealed Hinges on Cabinet Doors
- Dinette Table with Corian® Insert Top & 4 Chairs (2 Fixed, 2 Folding)\*
- Ultraleather U-Dinette with Corian® Insert Table Top\*
- Polished Corian® Countertop in Kitchen with Integrated Sink & Flush Sink Covers
- Polished Corian® Countertop with Integrated Bowl in Bathroom
- Polished Corian® Tops on Bedroom Nightstands & Furniture Tops
- Villa® Furniture
- Pullout Pantry Shelves\*
- Ultraleather Heated Driver/Passenger Seats with 8-Way Power, Power Lumbar & Power Footrest on Oversized Passenger Seat
- Lifts on Bed Top to Access Storage Area
- Cedar Paneling in Bedroom Wardrobe
- Carpeted Wardrobe Bottoms with Pearl Cream Headliner on Shelves & Overhead Cabinets
- Storage Shelves Recessed into Rear Cap of Rear Wardrobe Floorplans
- Luxurious Pillowtop Mattress with Quilted Bedspread, Reverse Shams, Matching Padded Bed Base & Accent Pillows
- King Bed\*

Electrical

- 10.0 kW PowerTech Quiet Series Diesel Generator on Hydraulic Slideout with Auto Changeover
- 50-Amp Electrical Service with Flexible Cord on Power Cord Rewind Reel
- Four 6-Volt House Batteries on Pullout Tray
- Battery Disconnect Switch
- 110-Volt Receptacle on Door Side
- 5-Watt Solar Panel
- 2000-Watt Inverter
- Emergency Start Switch

- Automatic Generator Start
- Exterior Security Lights on Each Side
- Midship Side Turn Signals
- Recessed Docking Lights
- Switched Receptacle for Engine Block Heater
- Halogen Lights in Ceiling and Overhead Cabinets
- Lighted Wardrobe
- Slideout Information Voice Module
- Manually Operated Hold-to-Run Slideout Switch
- ICC Light Switch
- Two 12-Volt Auxiliary Receptacles on Dashboard
- Exterior TV Jack on Door Side
- Interior Courtesy Lights
- Mood Lighting in Window Treatments, Kitchen & Bed Base
- Solar Prep
- Daylight Headlight System
- Map Lights

Exterior

- Full-Paint Masterpiece Finish™ with Super Clear Coat Diamond Shield
- Front Protective Film
- One-Piece Bonded Windshield
- Large Chrome Convex Exterior Mirrors with Remote Control, Defrost & Turn Signals
- Automatic Entrance Door with Double Step
- Front Entry Door with Power Flush Stepwell Cover
- Side-Hinged Baggage Doors (Except Door for Exterior Entrance Center)
- Lighted Exterior Storage Compartments with Cargo Liner, Controlled by Interior Master Switch
- 15,000 lb. Towing Hitch with 2 Extra 14-Gauge Wires
- Lighted Acrylic Assist Handle at Entrance Door
- Rear Protective Tow Guard with Stainless Steel Newmar Name Cutout
- Rear Ladder
- Squeegee in Exterior Compartment
- Undercoating
- Mud Flaps

Interior

- Padded Vinyl Ceiling

STANDARD AND OPTIONAL FEATURES

- Lined Day/Night Pleated Window Shades & Lambrequins
- Mini-Blinds in Kitchen & Bath Areas
- Hardwood Fascia on Living Area Slideouts
- Hardwood Window Sill
- Polished Porcelain Floor Tile in Kitchen, Bathroom & Driver/Passenger Area
- Polished Corian® Backsplash with Listel Ceramic Tile Inlay
- Deluxe Carpeting with High-Density Padding in Living Room & Bedroom
- Raised-Panel Interior Passage Doors with Glass Inserts
- Recessed Ceiling Area with Mood Lighting & Hidden Vents
- Interior Assist Handle at Main Entrance Door
- Power Driver- & Passenger-Side Sun Shades
- Power-Activated Sun Visors
- Vertical Drop Windshield Area Privacy Shade
- Kitchen Wastebasket

Plumbing and Bath

- Demand Water System with Aquajet™ ES Pump
- Sewage Holding-Tank Rinse
- Thetford™ Aria Sculptured China Stool (Thetford Vacuum Flush Stool in Rear Bath Floorplans)
- Towel Bar, Tissue Holder, Towel Ring & Robe Hook
- Exterior Convenience Wash Station—Hot/Cold Water, Soap & Towel Dispenser
- Fiberglass Tub/Shower with Assist Handle & Glass Shower Door
- Monitor Panel
- Monoplex Water Pump Switches Located in Bathroom, Kitchen & Near Exterior Gate Valves
- Water Filter for Entire Unit
- Water Filter with Drink Dispenser at Kitchen Sink
- Automatic Rewind Water-Hose Reel
- Designer Faucets in Kitchen & Bathroom

Construction

- One-Piece Molded Fiberglass Roof with 9mm Decking
- Gelcoated Fiberglass Exterior Sides
- Gelcoated Fiberglass Front & Rear Caps
- Power Lock Arms on All Slideout Rooms
- Aluminum-Frame Sidewalls & Roof Construction (16" On-Center)
- Roof R-Value Rating: 16
- Sidewall R-Value Rating: 11

- Floor R-Value Rating: 16
- Basement R-Value Rating: 4

Windows, Awnings and Vents

- Flush-Mounted Double-Pane Tinted Safety-Glass Windows
- Fan-Tastic® Vent with Rain Sensor in Kitchen & Bathroom Areas
- Skylight in Bathroom
- Keyless Entry
- Driver's-Side Power Window
- A&E® 9000 Bedroom & Slideout Window Awnings
- A&E® Oasis Power Front Entrance Door Awning
- A&E® Weather Pro Power Side Awning
- A&E® Slideout Awning Covers

OPTIONAL FEATURES

Appliances and Accessories

- 30" GE® Speedcook Advantium™ Microwave Oven
- Norcold® 12 Cu. Ft. 4-Door Refrigerator with Icemaker & Water Dispenser
- Norcold® Freezer on Pullout Tray
- One-Piece Washer/Dryer\*
- Two-Piece Washer/Dryer\*
- Dishwasher in Drawer below 2-Burner Cooktop\*
- All Electric Unit with Hydronic Zone Heat, 3100-Watt Inverter (2 Extra Batteries, Dometic® or Norcold® Refrigerator)
- Sony® 32" LCD Color TV in Front Overhead Cabinet\*
- Sirius Satellite Radio Capability (Does Not Include Monthly Subscription)
- Bose® Wave Radio with CD Player & Alarm Clock in Bedroom
- Electric Fireplace\*
- External Entertainment Center with 26" LCD TV & AM/FM Radio & CD Player
- Automatic Satellite without Receiver
- In-Motion Satellite without Receiver
- Entertainment Center with Relocated Living Area TV & Surround Sound System
- Trip Tek™ Electronic Travel Information (Displayed on Rearview Monitor)
- Navigation System (Displayed on Rearview Monitor)
- Side-View Cameras

- CB Radio with Antenna
- CB Antenna
- Wireless Internet Connection

Cabinets and Furniture

- Coastal Cherry Hardwood Cabinets
- Legacy Maple Hardwood Cabinets
- Carmel Glazed Cherry Hardwood Cabinets
- Ultraleather Sofa\*
- Ultraleather U-Dinette\*
- Ultraleather Combination U-Dinette and L-Lounge\*
- Ultraleather Hide-a-Bed Sofa with Air Mattress\*
- Combination Desk/Dinette Table with 2 Fixed & 2 Folding Chairs

Electrical

- 10.0 kW Onan® Quiet Series Diesel Generator
- Pre-Wire for Freezer
- Energy Management System
- Roof-Mounted Spotlight

Exterior

- Large Storage Tray with Access from Either Side
- Small Storage Tray
- Power Sliding Storage Tray
- Power Baggage Door Locks

Interior

- Polished Porcelain Floor Tile in Bath, Kitchen & Throughout
- Main Living Area with Custom Area Rug

Plumbing and Bath

- Corian® Shower Walls
- Fold-Down Shower Seat
- 110-Volt Heat Pads for Holding Tanks

Windows, Awnings and Vents

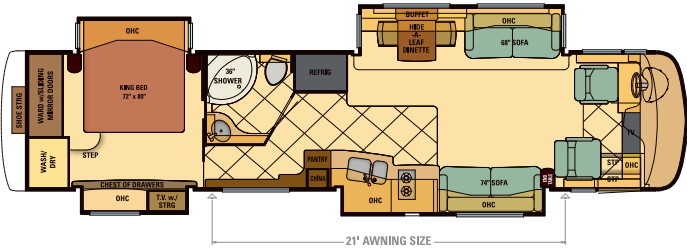
- Girard® Power Side Awning with Wind Sensor & Remote Control

\*Check with dealership on floorplan availability.

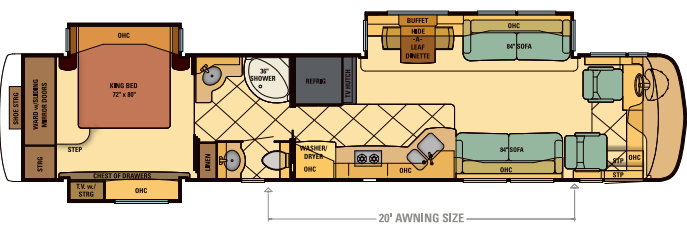


FLOORPLANS

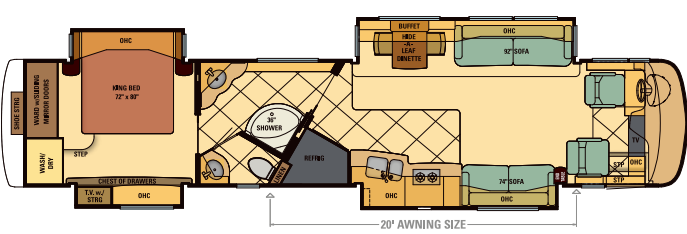
2007 Mountain Aire Diesel Pusher 4120



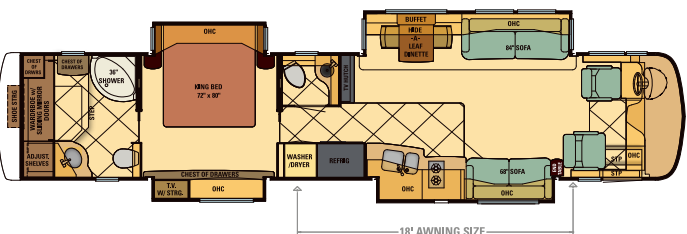
2007 Mountain Aire Diesel Pusher 4520



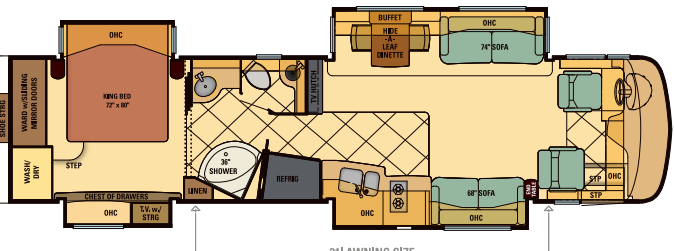
2007 Mountain Aire Diesel Pusher 4522



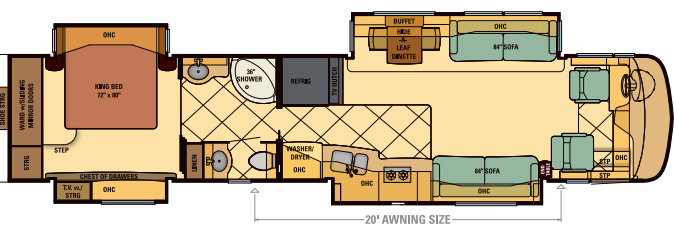
2007 Mountain Aire Diesel Pusher 4528



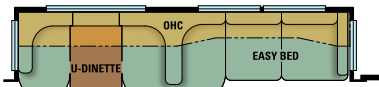
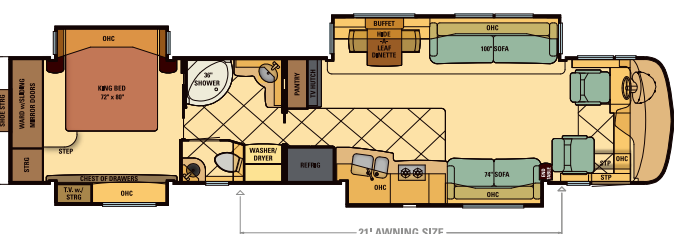
2007 Mountain Aire Diesel Pusher 4121



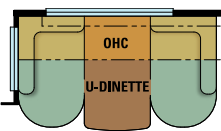
2007 Mountain Aire Diesel Pusher 4521



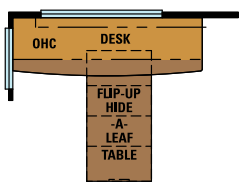
2007 Mountain Aire Diesel Pusher 4523



K800-Sofa/U-Dinette Combination  
MADP 4520, 4521, 4522, 4528



K422-U-Dinette Combination  
MADP 4120, 4121, 4520, 4521, 4522, 4523, 4528



K122-Dinette/Computer Station Combination  
MADP 4120, 4121, 4520, 4521, 4522, 4523, 4528

EXTERIOR PAINT

Choose the stunning full-body paint option that best suits your personality.



Tussah



Tranquil



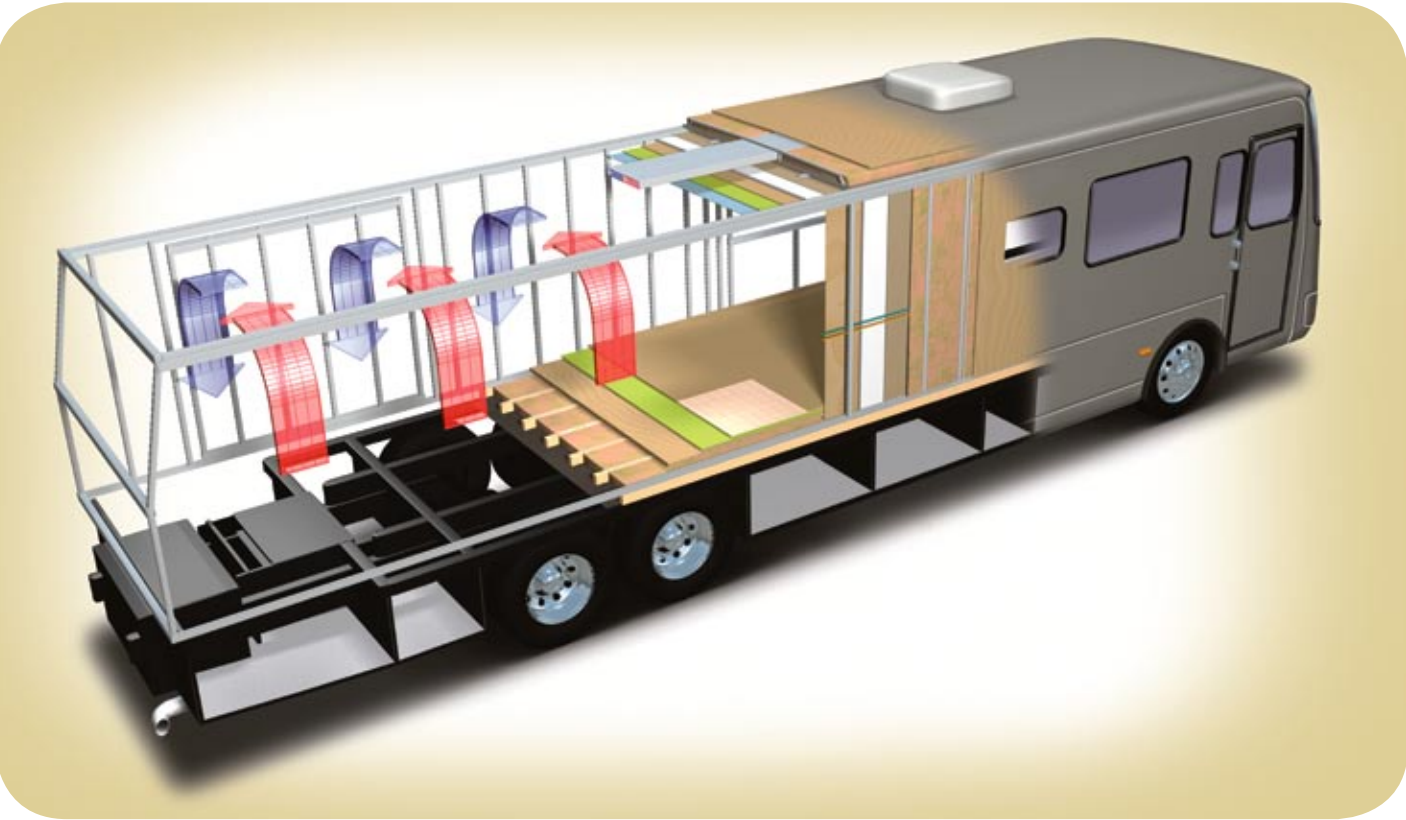
Raven



Eclipse

CONSTRUCTION

Mountain Aire is a showcase for Newmar’s exacting standards, meticulous detailing and legendary craftsmanship. The sturdy coach boasts a one-piece molded fiberglass roof and 16" on-center framing like that of a fine, site-built home.



NEWMAR EXPRESS  
LIMITED WARRANTY™

Every Mountain Aire Diesel Pusher is backed by Newmar’s two-year limited warranty/unlimited miles. Ask your Newmar dealer for details.

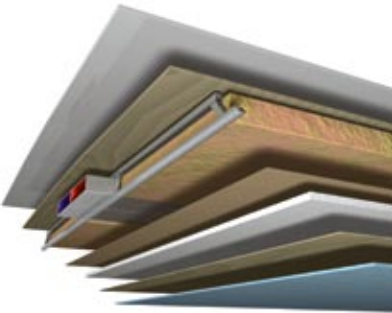
TOTAL COMFORT™ NEWMAR  
CENTRAL AIR CONDITIONING

Newmar’s exceptional Total Comfort central air conditioning is standard on every Mountain Aire. The system consists of two separate fully ducted systems—one to distribute incoming cool air, the other to quickly and effectively remove warm air from your living area.



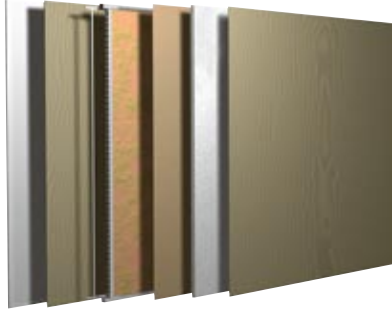
Roof R-Value = 16

- One-Piece Molded Fiberglass Roof
- 9 mm Wood Decking
- Aluminum Rafter Framing
- Fiberglass Batten Insulation
- Sikaflex
- A/C Ducting
- Aluminum Stringer Framing
- Kraft Paper Vapor Barrier
- 5/8" Bead Foam
- 3/16" Panel
- Padded Vinyl Overlay



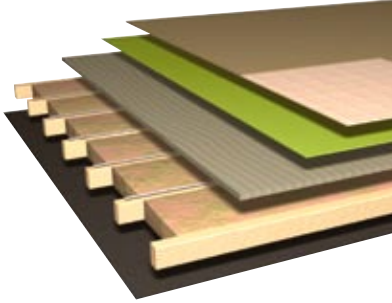
Sidewall R-Value = 11

- Composite One-Piece Gelcoat
- Exterior Sidewall
- 3/16" Plywood Exterior Wall
- Fiberglass Batten Insulation
- Sikaflex
- 5/8" Bead Foam
- 3/16" Plywood Interior Wall
- Kraft Paper Vapor Barrier
- Aluminum Framing with
- 3 1/2" Header Above



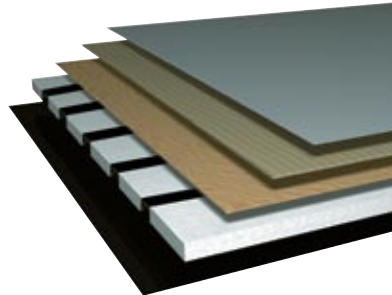
Floor R-Value = 16

- Carpet/Tile
- Carpet Padding
- 5/8" Floor Decking
- 2" X 3" Wood Framing
- Fiberglass Batten Insulation
- Polyethylene Moisture Barrier



Basement R-Value = 4

- Cargo Liner
- 3/8" Floor Decking
- 3/16" Luan Panel
- 1 1/2" Bead Foam
- Aluminum Sheeting with
- Steel Support Rails to
- Prevent Bowing and Flexing



SPECIFICATIONS

FLOORPLAN SPECIFICATIONS

FLOORPLAN	APP. OVERALL LENGTH*	APP. OVERALL WIDTH	APP. OVERALL HEIGHT	INTERIOR WIDTH	INTERIOR HEIGHT	GREY	SEWAGE	WATER	LP	FURNACE	WATER HEATER
2007 MADP 4120	40' 11"	101.5"	12' 08"	95.5"	84"	65 gal.	45 gal.	105 gal.	32 gal.	50,000 Btu	Cont.
2007 MADP 4121	40' 11"	101.5"	12' 08"	95.5"	84"	65 gal.	45 gal.	105 gal.	32 gal.	50,000 Btu	Cont.
2007 MADP 4520	44' 11"	101.5"	12' 08"	95.5"	84"	65 gal.	45 gal.	105 gal.	32 gal.	50,000 Btu	Cont.
2007 MADP 4521	44' 11"	101.5"	12' 08"	95.5"	84"	65 gal.	45 gal.	105 gal.	32 gal.	50,000 Btu	Cont.
2007 MADP 4522	44' 11"	101.5"	12' 08"	95.5"	84"	65 gal.	45 gal.	105 gal.	32 gal.	50,000 Btu	Cont.
2007 MADP 4523	44' 11"	101.5"	12' 08"	95.5"	84"	65 gal.	45 gal.	105 gal.	32 gal.	50,000 Btu	Cont.
2007 MADP 4528	44' 11"	101.5"	12' 08"	95.5"	84"	65 gal.	45 gal.	105 gal.	32 gal.	50,000 Btu	Cont.

SPARTAN® CHASSIS INFORMATION

FLOORPLAN	ENGINE HP	AXLE RATIO	FUEL CAP.	WHEEL BASE	FRONT GAWR**	REAR GAWR**	TAG GAWR	GVWR**	GCWR**	APP. UVW	APP. NCC
2007 MADP 4120	450	4.33	150 gal.	246"+TAG	16,000 lb.	20,000 lb.	10,000 lb.	46,000 lb.	61,000 lb.	37,058 lb.	8,942 lb.
2007 MADP 4121	450	4.33	150 gal.	246"+TAG	16,000 lb.	20,000 lb.	10,000 lb.	46,000 lb.	61,000 lb.	37,008 lb.	8,992 lb.
2007 MADP 4520	450	4.33	150 gal.	294"+TAG	16,000 lb.	20,000 lb.	10,000 lb.	46,000 lb.	61,000 lb.	37,570 lb.	8,430 lb.
2007 MADP 4521	450	4.33	150 gal.	294"+TAG	16,000 lb.	20,000 lb.	10,000 lb.	46,000 lb.	61,000 lb.	38,770 lb.	7,230 lb.
2007 MADP 4522	450	4.33	150 gal.	294"+TAG	16,000 lb.	20,000 lb.	10,000 lb.	46,000 lb.	61,000 lb.	38,890 lb.	7,110 lb.
2007 MADP 4523	450	4.33	150 gal.	294"+TAG	16,000 lb.	20,000 lb.	10,000 lb.	46,000 lb.	61,000 lb.	38,869 lb.	7,131 lb.
2007 MADP 4528	450	4.33	150 gal.	294"+TAG	16,000 lb.	20,000 lb.	10,000 lb.	46,000 lb.	61,000 lb.	38,650 lb.	7,350 lb.

Lengths, heights, widths and dry weights are approximate. Weight will vary based on optional equipment added to the above base weight.

**GAWR:** Gross Axle Weight Rating is the maximum permissible weight for an axle.

**GVWR:** Gross Vehicle Weight Rating is the maximum permissible weight for a fully loaded motor coach.

**GCWR:** Gross Combination Weight Rating is the value specified by the manufacturer of the vehicle as the maximum allowable loaded weight of this motor coach and any towed trailer or towed vehicle.

**UVW:** Unloaded Vehicle Weight is the weight of this motor coach as built at the factory with full fuel, engine oil and coolants. The UVW does not include cargo, fresh water, LP gas or dealer-installed accessories.

**NCC:** Net Carrying Capacity is the maximum weight of all occupants, including the driver, personal belongings, food, fresh water, waste water, LP gas, tools, tongue weight of the towed vehicle, dealer-installed accessories, etc., that can be carried by the motor coach.

\*Length does not include rear ladder. \*\*Specifications supplied by the chassis manufacturer.

Spartan® K2 Chassis

The K2 chassis has set the standard in the marketplace for its strength and power. It is equipped with a powerful Cummins® 450 horsepower ISM engine, plus a brawny 16,000 lb. IFS (Independent Front Suspension). The K2 chassis allows you to pass other drivers on a steep incline with ease. And, the K2 will allow you to maneuver the motor coach like a pro. Handle tight turns with perfect precision. Nothing can get in your way when you are equipped with a Spartan K2 under your coach. For peace of mind, there is a roadside assistance program for its entire warranty period.





Colton RV & Marine  
3122 Niagara Falls Blvd  
North Tonawanda, NY 14120  
(716) 694-0188  
[www.ColtonRV.com](http://www.ColtonRV.com)

Colton RV  
3443 Southwestern Blvd.  
Orchard Park, NY 14127  
(716) 957-3250  
[www.Coltonrv.com](http://www.Coltonrv.com)

355 North Delaware Street • P.O. Box 30 • Nappanee, Indiana 46550-0030

P: 574.773.7791 F: 574.773.2895  
[www.NewmarLuxury.com](http://www.NewmarLuxury.com)



WHEN YOU KNOW THE DIFFERENCE™

Some features shown in our literature are optional. Colors and finishes are photographic representations. The actual materials may look different. Prices, specifications and floorplans are subject to change at Newmar's discretion, without prior notice or obligation. Please see your dealer for actual samples and specifications. ©2006 Newmar Corporation. Printed in the U.S.A. (04/06)