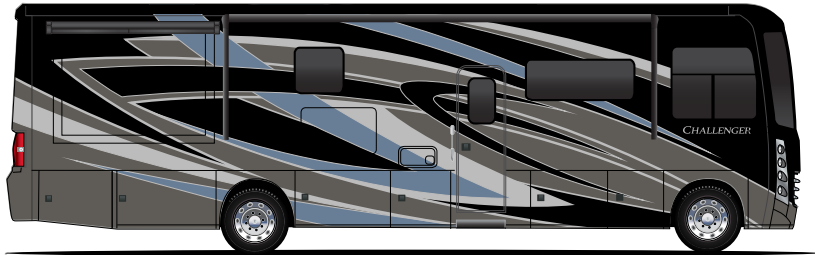
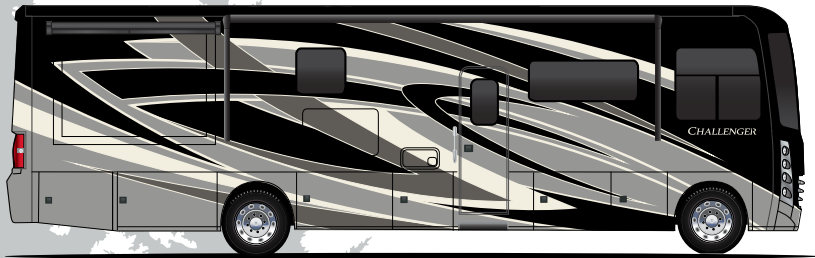




FIREKEEPER III



MARINA BAY III

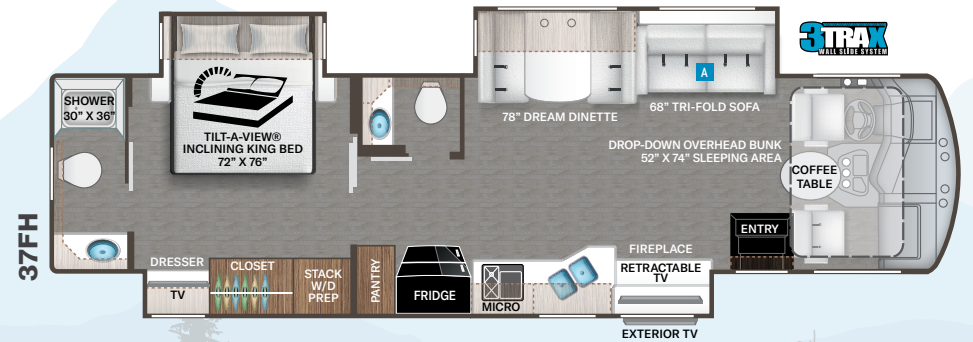
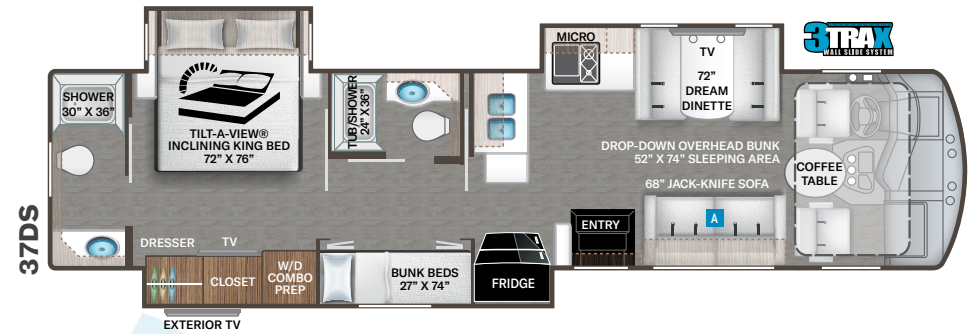
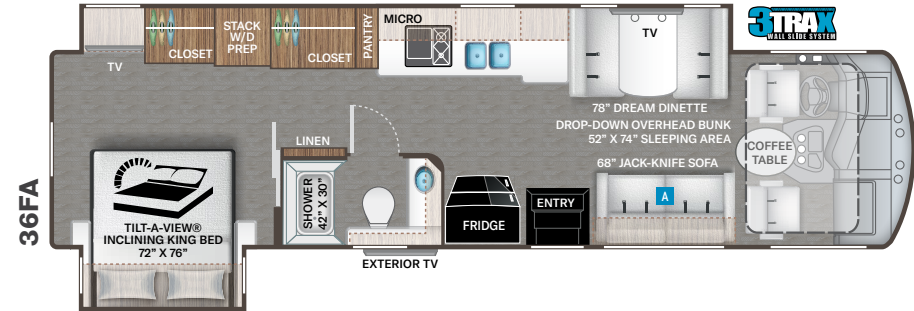
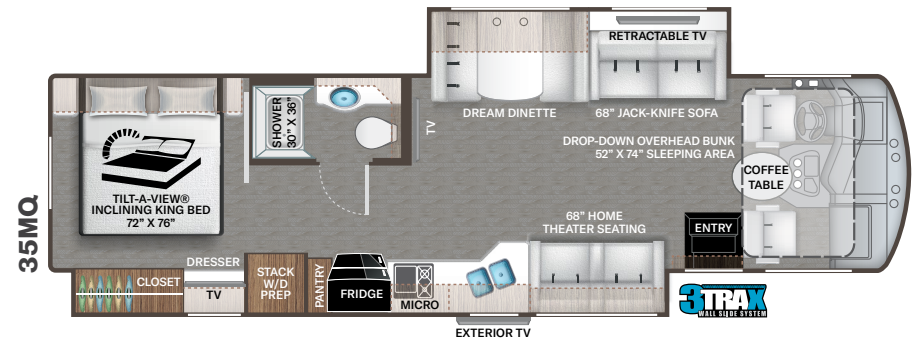


PEPPERMILL III

STANDARD

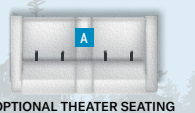


OPTIONAL



# CHALLENGER®

Options Available on Select Floor Plans:



# Featured Highlights

## CONSTRUCTION & EXTERIOR

- Ford® F-53 Chassis - 7.3L V8 Engine, 335HP, 468 lb.-ft. Torque - TorqShift® 6-Speed Automatic Transmission with Overdrive
- One-Piece Fiberglass Front & Rear Caps
- Premium One Piece TPO Crowned Roof
- Full-Body Paint with Gel Coated Sidewalls
- Invisible Front Paint Protection
- Automatic Leveling Jacks with Touchpad Controls
- Side-Hinged Aluminum Compartment Doors
- Basement Pass-Through Storage Compartment
- Rotocast Storage Compartments
- Pet-Link™ Multi-Purpose Tie-Down
- Power Patio Awning with Integrated LED Lighting
- Power Entry Door Awning (35MQ & 37FH)
- Slideout Room Topper Awning(s)
- Frameless Dual Pane Windows
- Electric Entry Steps
- Roof Ladder
- 8,000-lb. Trailer Hitch with 7-pin Round Connector

## AUTOMOTIVE & COCKPIT

- 10.1" Touchscreen Dash Radio with Bluetooth®, Apple CarPlay™, Android Audio® & Sirius/XM® Radio
- Steering Wheel Audio Control
- Back-Up Monitor
- Heated/Remote Exterior Mirrors with Integrated Side View Cameras
- Reclining/Swivel Leatherette Captain's Chairs with Stow-Away Coffee Table
- Power Adjustable Driver's Chair
- Tilt and Telescoping Steering Wheel

- Automatic Headlights
- Emergency Engine Start Switch
- Power Roller Shade on Windshield
- Manual Roller Shades on Side Windows
- 22.5" Tires with Aluminum Wheels
- Valve Stem Extenders on Rear Wheels
- Cruise Control
- Dash Fans
- Fog Lights
- Dash Workstation with 110-volt & 12-volt Outlets
- Power Drop-Down Hide-Away Overhead Bunk with Cotton Cloud™ Mattress & Bunk Ladder

## INTERIOR

- Residential Vinyl Flooring
- 84" Interior Ceiling Height
- Soft Vinyl Ceiling
- LED Lighting
- Regatta Satin Finish Cabinetry with Solid Wood Flat Panel Cabinet Doors & Nickel Finish Hardware
- Full Extension Metal Ball Bearing Drawer Guides
- Lambrequin Window Treatments
- Window Solar & Privacy Roller Shades
- Leatherette Dream Dinette® Booth with Cup Holders
- Single Child Safety Tether in Dream Dinette®
- Leatherette Jack-Knife Sofa (35MQ, 36FA, & 37DS)
- Leatherette Tri-Fold Sleeper Sofa (37FH)
- Leatherette Home Theater Seating with Footrests (35MQ)
- Sofa Pillows
- Electric Fireplace with Remote Control (37FH)

## INTERIOR OPTION

- Leatherette Home Theater Seating with Footrests (37DS, 37FA & 37FH)
- Shell Gray Painted Matte Finish Cabinetry with Solid Wood Bristol Style Doors & Nickel Finish Hardware

## KITCHEN

- Residential Refrigerator
- 2-Burner High-output Gas Range Top with Single Induction Cooktop
- 30" Stainless Steel Over-the-Range Convection Microwave Oven
- Solid Surface Countertops & Sink Covers
- Galley Countertop Extension (37DS)
- Stainless Steel Double Bowl Sink & Single Handle Faucet with Pull-Down Sprayer
- Decorative Tile Backsplash
- 12-volt Attic Fan with Cover
- Kitchen Countertop LED Accent Lighting

## BEDROOM & BATHROOM

- King Size Bed with Tilt-A-View™ Inclinable Bed Mechanism
- Bunk Beds – Converts to Closet (37DS)
- Designer Headboard, Bedspread & Pillow Shams
- Bedroom Charging Station and Dedicated CPAP Machine Outlet
- Foot Flush Porcelain Toilet
- Power Vent in Bathroom(s) with Cover
- Fiberglass Shower with Obscure Glass Door
- Oxygenics® Shower Head
- Showermiser® Hot Water Recycling System

## ENTERTAINMENT

- Retractable 50" TV in Living Area (35MQ & 37FH)
- 40" TV in Living Area (36FA, 37DS & 35MQ)
- Blu-Ray Player & Sound Bar in Living Area
- 32" TV in Bedroom
- Tablet Holder and USB Charge Ports in Bunk Beds (37DS)
- USB Charging Ports in the Bedroom and Living Room
- HDMI Video Distribution
- Cable TV Ready
- Digital TV Antenna
- Satellite Mounting Backer in Roof
- Exterior 40" LED TV on Swivel Bracket with Bluetooth® Soundbar & Radio
- Winegard® Connect™ 2.0 WiFi / 4G / TV Antenna

## ELECTRICAL & PLUMBING

- Onan® RV QG 5500 Gas Generator
- 50-amp Shoreline Power Cord
- 1800-watt Inverter
- Automatic Generator Start
- Automatic Transfer Switch with Power Protection
- Rapid Camp+® Multiplex Wiring Control System with 7" Touchscreen & WiFi App-Enabled
- 100-watt Solar Charging System with Control Through Main Multiplex Control Panel
- Exterior LP Connection
- Dual Roof Air Conditioners
- Dual Auxiliary House Batteries with Battery Tray that Holds up to Four (4) Batteries
- Battery Disconnect Switch
- 55-amp Converter

- Tankless Water Heater
- Enclosed & Heated Holding Tanks
- Whole Coach Water Filtration System
- Black Tank Flush System
- 360° Siphon RV Holding Tank Vent Cap
- Outside Shower
- Stackable Washer/Dryer Prep (35MQ, 37FA & 37FH)
- Washer/Dryer Combo Prep (37DS)

For a complete listing of available features, visit [thormotorcoach.com/challenger](http://thormotorcoach.com/challenger).

Use your phone's camera to find out more information.

Just scan the code!



	35MQ	36FA	37DS	37FH
Chassis	Ford	Ford	Ford	Ford
Gross Vehicle (GVWR)	24,000	24,000	24,000	24,000
Gross Combined (GCWR)	30,000	30,000	30,000	30,000
Wheel Base	252"	252"	262"	262"
Exterior Length (w/o ladder)	37'-2"	37'-2"	39'-1"	39'-1"
Exterior Height (w/AC)	12'-11"	12'-11"	12'-11"	12'-11"
Exterior Width (w/o mirrors)	101"	101"	101"	101"
Interior Height (living area)	84"	84"	84"	84"
Awning Size	20'	20'	21'-6"	20'
Fuel (gal)	80	80	80	80
LPG (lbs)	105	105	105	105
Fresh/Waste/Gray Water (gal)	100 / 40 / 40F - 30R	100 / 40 / 40	100 / 40F - 40R / 40F - 40R	100 / 40F - 40R / 40F - 40R
Water Heater (gal)	Tankless	Tankless	Tankless	Tankless
Furnace (BTUs)	35,000	35,000	35,000	35,000
Exterior Storage Capacity (cu. ft.)	168	188	192	216
Hitch Weight Rating (lbs)	8,000	8,000	8,000	8,000

Colton RV & Marine  
3122 Niagara Falls Blvd  
North Tonawanda, NY 14120  
(716) 694-0188  
[www.ColtonRV.com](http://www.ColtonRV.com)

Colton RV  
3443 Southwestern Blvd.  
Orchard Park, NY 14127  
(716) 957-3250  
[www.Coltonrv.com](http://www.Coltonrv.com)



**IMPORTANT—PLEASE READ:** This brochure reflects product design, fabrication, material, components and specifications at the date of printing, which date is disclosed below. Please visit us online at [ThorMotorCoach.com](http://ThorMotorCoach.com) or consult with your selling dealership for the latest in standards, options, specification and technical information. Photographs in the brochure may depict optional equipment or may only be available in certain floor plans. Components, appliances and the chassis may have been manufactured in a calendar year before the vehicle's designated model year. All capacities are approximate. The actual length of the vehicle may differ from that indicated in the brochure due to variances in the manufacturing processes and/or installed components. All dry weights are based on standard model features and do not include optional features or equipment. Component part and appliance manufacturers issue limited warranties covering portions of the vehicle not covered under the limited warranty we issue. Copyright Thor Motor Coach, Inc. © OH 10/01/2022

P.O. Box 1486, Elkhart, IN 46515 Sales Department: 800.860.5658

[thormotorcoach.com/challenger](http://thormotorcoach.com/challenger)

