



NO SACRIFICES

# TRACER



[www.primetimerv.com](http://www.primetimerv.com)

North America's  
*Favorite* RV Company!

TRAVEL TRAILERS

TRACER  
ULTRA LITE

ULTRA LITE



Tracer 2940RKS

For the consumer who is looking for ultra-light weights, but doesn't want to sacrifice style, amenities, and comfort . . . we've designed the Tracer series travel trailers.

The Tracer Ultra Lite offers spacious layouts, plush residential furniture, and other high-end features not typically seen in an ultra-lite trailer that is often thousands of pounds lighter than traditional trailers!



Tracer 3250BHD

*NO SACRIFICES*

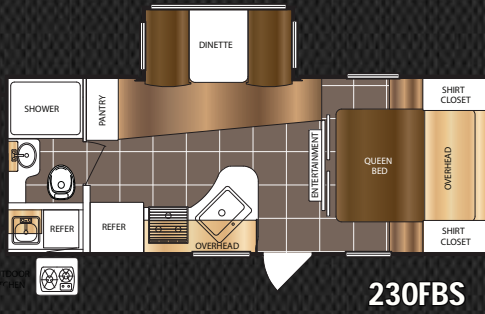
**TRACER**  
**AIR**



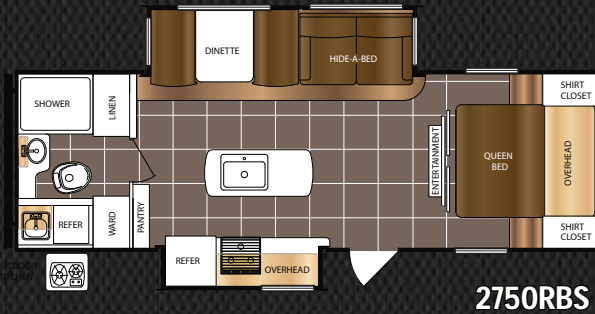
Tracer 275AIR

For the ultimate easy-to-tow ultra-lite, take a look at the Tracer AIR! A special breed of travel trailer, the Tracer AIR was designed to be towed by many of today's cross-over and mid-sized SUV's. Featuring Prime Time Manufacturing's exclusive ETERNABOND® Construction, EZ Tow wide track suspension, and durable high gloss fiberglass exterior, the Tracer AIR proves that a camper doesn't have to be light on features to be light in weight! Tracer AIR will allow you to enjoy your next trip while making "NO SACRIFICES" on comfort and convenience.

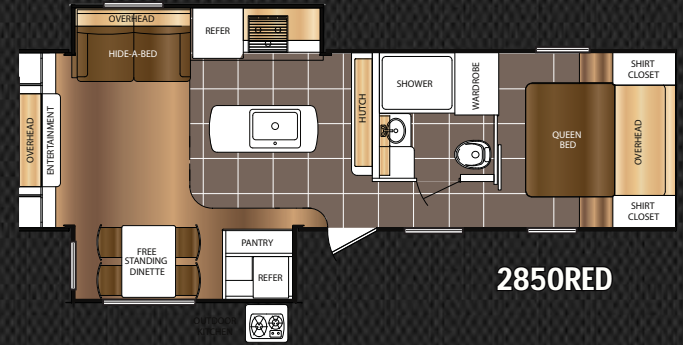
# TRACER ULTRA LITE - FLOORPLANS AND SPECIFICATIONS



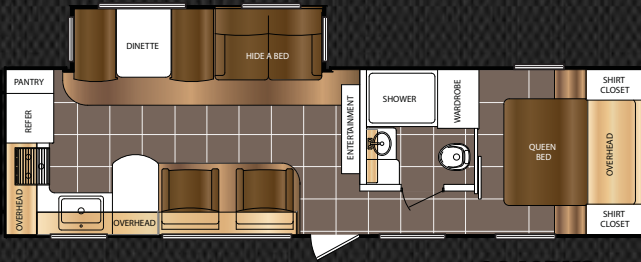
230FBS



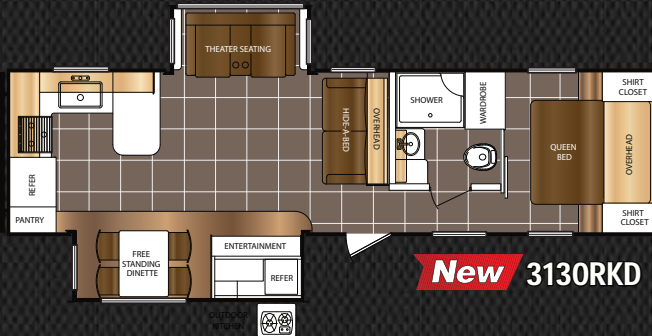
275ORBS



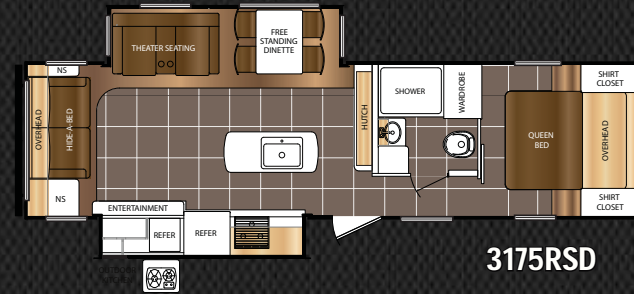
2850RED



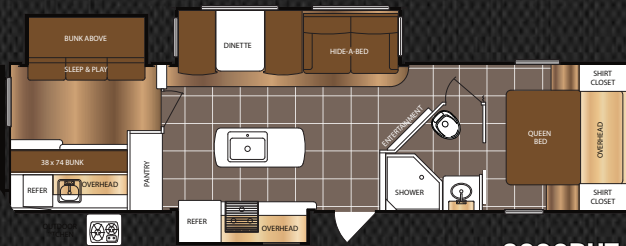
2940RKS



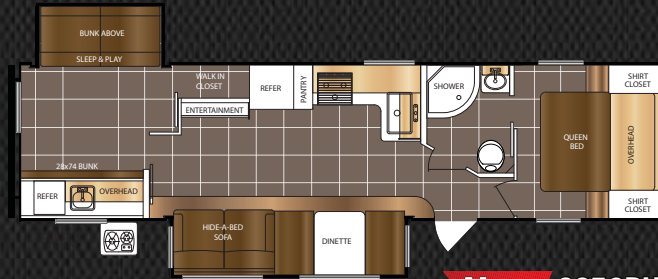
**New** 3130RKD



3175RSD



3200BHT



**New** 3250BHD



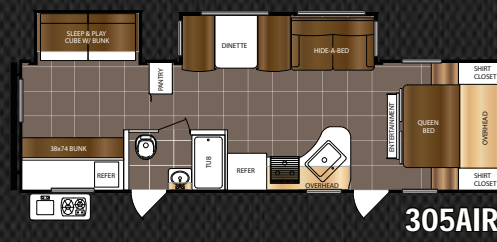
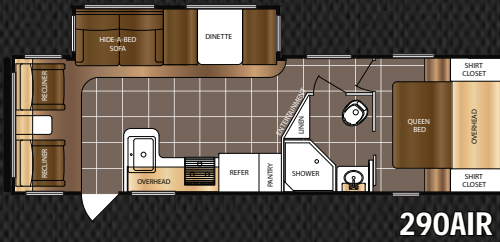
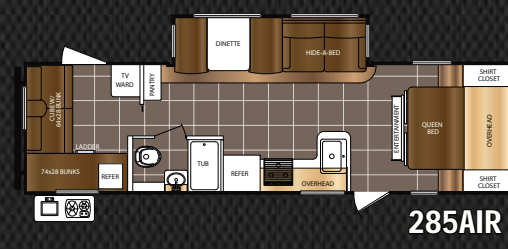
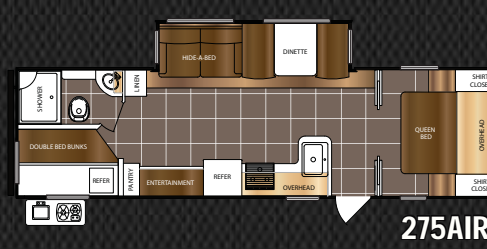
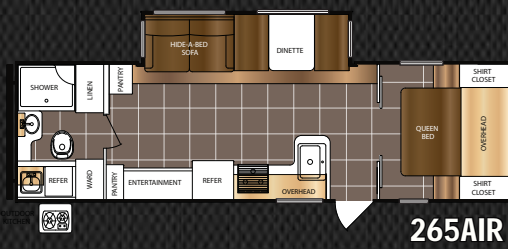
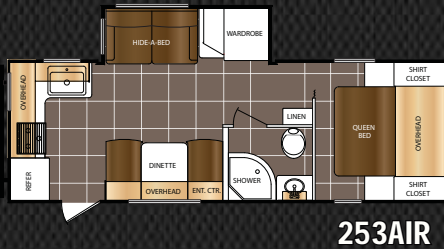
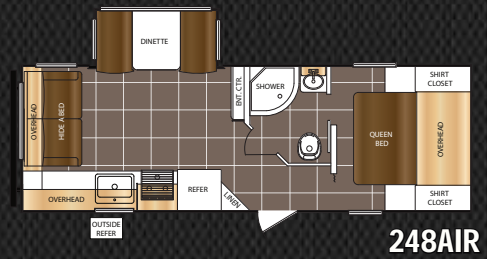
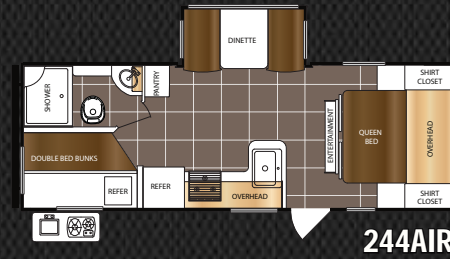
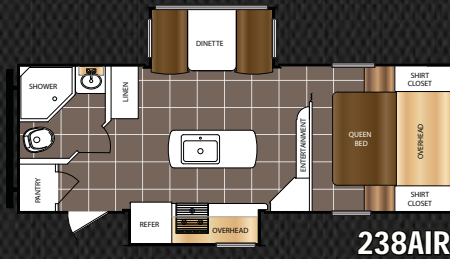
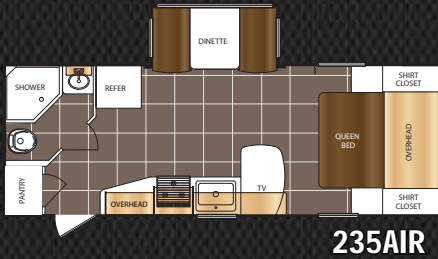
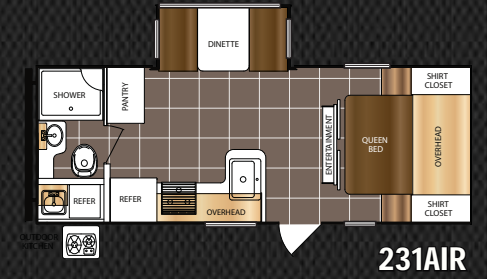
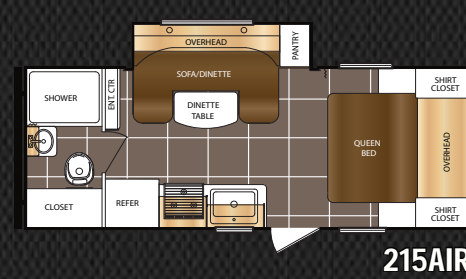
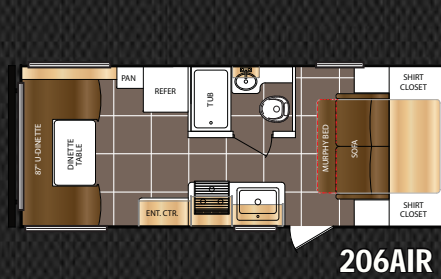
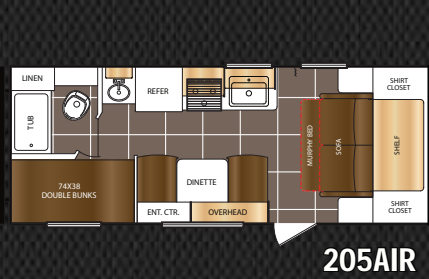
**New** 3300BHD

The Tracer Ultra Lite represents the pinnacle of ultra-lite innovation, featuring wide-open, spacious layouts that are often hundreds of pounds lighter than traditional floorplans. The Ultra Lite Series offers premium upgrades like Residentially-Inspired Furniture, Electric Awning, an LED Television, Slam Baggage Doors, and a Universal Docking Center. Now you can have all the features and the floorplan of your choice in a lightweight easy-to-tow Tracer Ultra Lite.

SPECIFICATIONS	230FBS	275ORBS	2850RED	2940RKS	3130RKD	3175RSD	3200BHT	3250BHD	3300BHD
LENGTH	25' 2"	30' 0"	32' 11"	33' 9"	35' 7"	34' 10"	36' 9"	36' 9"	37' 7"
HEIGHT	11' 0"	11' 2"	11' 2"	11' 2"	11' 2"	11' 2"	11' 2"	11' 2"	11' 4"
HITCH WEIGHT	635 lb.	675 lb.	880 lb.	675 lb.	765 lb.	820 lb.	775 lb.	741 lb.	770 lb.
UNLOADED VEHICLE WEIGHT (UVW)	5,129 lb.	6,285 lb.	7,110 lb.	6,680 lb.	7,545 lb.	7,256 lb.	7,675 lb.	7,344 lb.	7,520 lb.
CARGO CARRYING CAPACITY (CCC)	2,576 lb.	1,390 lb.	2,570 lb.	2,795 lb.	2,020 lb.	2,364 lb.	1,900 lb.	2,197 lb.	2,050 lb.

UVW (Unloaded Vehicle Weight) \* is the typical weight of the unit as manufactured at the factory. It includes all weight at the unit's axle(s) and tongue or pin and LP Gas. The UVW does not include cargo, fresh potable water, additional optional equipment or dealer installed accessories. \*Estimated Average based on standard build optional equipment.  
 CCC (Cargo Carrying Capacity) \*\* is the amount of weight available for fresh potable water, cargo, additional optional equipment and accessories. CCC is equal to GVWR minus UVW. Available CCC should accommodate fresh potable water (8.3 lbs per gallon). Before filling the fresh water tank, empty the black and gray tanks to provide for more cargo capacity. \*\* Estimated average based on standard build optional equipment.

TRACER AIR - FLOORPLANS AND SPECIFICATIONS



SPECIFICATIONS	205AIR	206AIR	215AIR	231AIR	235AIR	238AIR	244AIR	248AIR	253AIR	265AIR	275AIR	285AIR	290AIR	300AIR	305AIR
LENGTH	24' 8"	24' 11"	23' 11"	25' 7"	26' 7"	26' 11"	27' 4"	28' 1"	28' 4"	31' 11"	33' 6"	33' 4"	31' 11"	32' 8"	33' 2"
HEIGHT	10' 3"	10' 3"	10' 8"	10' 8"	10' 8"	10' 8"	10' 8"	10' 8"	10' 8"	10' 10"	10' 10"	10' 10"	10' 10"	10' 10"	10' 10"
HITCH WEIGHT	440 lb.	450 lb.	480 lb.	485 lb.	550 lb.	610 lb.	525 lb.	550 lb.	530 lb.	670 lb.	630 lb.	622 lb.	610 lb.	610 lb.	650 lb.
UNLOADED VEHICLE WEIGHT (UVW)	3,980 lb.	4,010 lb.	4,265 lb.	4,808 lb.	4,676 lb.	5,140 lb.	5,221 lb.	4,945 lb.	5,228 lb.	5,974 lb.	6,120 lb.	6,030 lb.	5,779 lb.	6,070 lb.	6,381 lb.
CARGO CARRYING CAPACITY (CCC)	2,060 lb.	2,040 lb.	3,215 lb.	2,677 lb.	2,874 lb.	2,470 lb.	2,304 lb.	2,605 lb.	2,302 lb.	1,696 lb.	1,510 lb.	1,750 lb.	1,822 lb.	1,540 lb.	1,269 lb.

# TOURING EDITION 7.0\*

**LIMITED TIME OFFER**

See your local dealer for details and availability of Touring Edition 7.0.



**ALUMINUM WHEELS**



**LED LIGHTED AWNING**



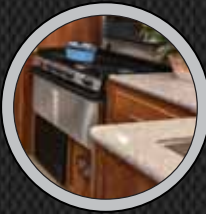
**HIGH GLOSS FIBERGLASS**



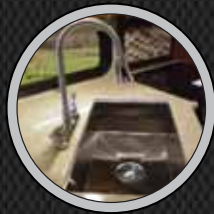
**FLUSH MOUNT GLASS STOVE TOP**



**STAINLESS STEEL APPLIANCES**



**SOLID SURFACE COUNTERTOPS**



**STAINLESS STEEL SINK AND SPRAYER FAUCET**



**LED Lighting**

*Cooler and more energy efficient*



**\* R-52 EXTREME THERMAL PACKAGE**



**NEW SOLAR PREP**



**FRICION HINGE DOOR**



**RESIDENTIAL FURNITURE**

# TRACER ULTRA LITE ADVANTAGE PACKAGE

**UNIVERSAL DOCKING STATION**



The Universal Docking Station provides easy setup for your camping experience and protects hookups from the elements!

**AERODYNAMIC FRONT CAP WITH DIAMOND PLATE PROTECTION**



Tracer provides diamond plate Protection to protect your investment.

**SLAM LATCH BAGGAGE DOORS WITH MAGNETIC LATCHES**



You don't have to buy a diesel motor home to get the security and convenience of bus style slam latch baggage doors.

**EZ TOW WIDE TRACK SUSPENSION**



Tracer offers E-Z Tow on most models - another Prime Time innovation designed to minimize "bouncing" while towing.

**ETERNABOND® CONSTRUCTION**



Tracer is built with Prime Time's ETERNABOND® Construction Technology.

**OUTSIDE SPEAKERS**



Your entertainment options are multiplied with Tracer's exterior speakers.

**BLACK TANK FLUSH**



The black tank flush makes emptying the tank a clean, easy process!

**DUCTED A/C IN ALL FLOORPLANS**



Tracer and Tracer AIR feature residential style ducted A/C for even cooling throughout the unit.

**HIGH EFFICIENCY QUICK RECOVERY WATER HEATER**



Tracer's high efficiency water heater allows users up to 18 gallons of hot water per hour!

**SPARE TIRE WITH CARRIER**



Tracer's spare tire affords peace of mind on board your home away from home!

**LED TV'S**



All Tracers have LED TV's to provide exceptional viewing quality.

**GIANT SKYLIGHT AND SURROUND**



The extra-large skylight adds great natural lighting to the unit's interior.

\*N/A ON TRACER AIR

# STANDARDS & OPTIONS

- ETERNABOND CONSTRUCTION Featuring:
  - \* Laminated Aluminum Framed Side Walls R-11 - \*†
  - \* Laminated Aluminum Framed End Walls R-11 - \*†
  - \* Laminated Aluminum Framed Main Floor - \*†
  - \* Laminated Aluminum Framed Slideout Walls & Roof R-11 - \*†
- Extreme Thermal Package\*
  - \* Roof (R-52) Double Layer Fiberglass & Radiant Foil Insulation - \*†
  - \* Floor (R-52) Extra Thick Bead Foam & Radiant Foil Insulation - \*†
  - \* Front Cap (R-52) Extra Thick Bead Foam & Radiant Foil Insulation - \*†
  - \* Enclosed And Heated Underbelly (N/A 205AIR, 206AIR) - \*†
  - \* Enclosed And Heated Holding Tanks (N/A 205AIR, 206AIR) - \*†
  - \* Enclosed And Heated Dump Valves (N/A 205AIR, 206AIR) - \*†

## CONSTRUCTION

- High Gloss Gel Coated Fiberglass Exterior - \*†
- 30 AMP Detachable Power Cord -- \*†
- Fresh Water Capacity - 48 Gallons (AIR 38 Gallons) - \*†
- Waste Water Capacity - 30 Gallons - \*†
- Gray Water Capacity - 30 Gallons (60 Gallons Select Floorplans) - \*†
- 3/8" Walk On Roof Decking - \*†
- Snow Load Approved 5" Truss Rafters -- \*†
- One Piece TPO Roof with 12-Year Warranty- \*†
- Moisture Barrier Floor Enclosure- \*†

## EXTERIOR FEATURES & EQUIPMENT

- A&E LED Lit Electric Awning - \*†
- (4) 2,500 lbs. Rated Manual Stabilizer Jacks - †
- (4) 5,000 lbs. Rated Manual Stabilizer Jacks - \*
- Champagne Hi-Gloss Exterior - \*†
- Bus Style Slam Latch Baggage Doors - \*
- Huge Pass Thru Storage With Oversized Doors - \*†
- Universal Docking Center (UDC) - \*†
- Battery Disconnect Switch (UDC) - \*†
- Black Tank Flush (UDC) - \*†
- Outside Shower With Recoil Hose (UDC) - \*†
- Solar Prep (UDC) - \*†
- Cable Ready (UDC) - \*†
- Satellite Ready (UDC) - \*†
- Large Fold-Away Grab Handle - \*†
- Spare Tire With Carrier - \*†
- Black, Dark Tinted, Radius Safety Glass Windows - \*†
- Roof Mounted Antenna - \*†
- Outside TV Bracket & Hook-Ups - \*†
- Exterior GFI Outlet - \*†
- LP Quick Connect - \*†
- Outside Speakers - \*†
- Aerodynamic Fiberglass Front Cap - \*
- Front Diamond Plate Rock Guard - \*†
- "E-Z Lube" Greasable Axle Hubs - \*†

## EXTERIOR FEATURES & EQUIPMENT (con't)

- EZ Tow Wide Track Suspension (AIR Only Deep Slide Models) - \*†
- Dexter Axles With 5-Year Warranty - \*†
- Radial Tires - \*†
- Extended Drip Spouts - \*†
- Hitch Light - \*†
- Outside Kitchen Cook Center (Select Floorplans) - \*†

## INTERIOR FEATURES & EQUIPMENT

- Large LED TV's In All Floorplans - \*†
- AM/FM/CD/DVD/Bluetooth Stereo System With MP3 Plug In - \*†
- Raised Panel Kitchen Overhead Cabinet Doors - \*†
- Pre-drilled And Screwed Cabinetry - \*†
- Solid Wood Core Golden Cherry Finish Cabinetry - \*†
- Satin Nickel Hardware - \*†
- Large Single Basin Stainless Steel Sink - \*
- Residential Sprayer Faucet - \*†
- Spice Rack Valance - \*
- LG Solid Surface Countertops - \*
- Seamless Residential Countertops - †
- Residential Pleated Shades - \*†
- Residential Hide-A-Bed Sofa (Many Models) - \*†
- Extended Height Toilet With Foot Flush - \*†
- Large Medicine Cabinet - \*†
- Tub/Shower Surround - \*†
- Skylight Above Shower (Most Models) - \*†
- 12V Exhaust Fan In Bath - \*
- "Evergreen" Select Foam Queen Size Mattress - \*†
- Quilted Bunk Mats (Where Applicable) - \*†
- Quilted Residential Bedsread - \*†

## APPLIANCES

- Large 2-Door Refrigerator - \*†
- 13,500 BTU Residential Ducted Air Conditioner - \*†
- 6 Gallon Gas/Electric Water Heater - \*†
- 17.8 Gal/Hr Quick Recovery Water Heater - \*†
- Hi Capacity Gas Furnace - \*†
- Large Oven - \*†
- Range Hood With Light And Exhaust - \*†
- Water Heater Bypass - \*†
- Hi Capacity Water Pump - \*†
- Microwave - \*†
- Flush Mount Glass Top Stove Cover - \*†

## SAFETY

- CO Detector - \*†
- LP Detector - \*†
- Fire Extinguisher - \*†
- Dual Hitch Safety Chains - \*†
- Smoke Alarm - \*†

## OPTIONS

- Free Standing Dinette With 4 Chairs - \*  
(Some Floorplans)
- 15,000 BTU Air Conditioner - \*†
- 50 AMP Service With Second A/C Prep - \*  
(2940RKS, 3175RSD, 3130RKD, 3200BHT,  
3250BHD, 3300BHD)

## TRACER AIR ADVANTAGE PACKAGE

- ETERNABOND CONSTRUCTION
- Universal Docking Center (UDC)
- Black Tank Flush
- Spare Tire With Carrier
- Outside Speakers
- Large LED TV's In All Floorplans
- Large 2-Door Refrigerator
- 6 Gallon Gas/Electric Water Heater
- Ducted A/C

\* = TRACER ULTRA LITE

† = TRACER AIR

# TRACER

ULTRA LITE



# TRACER

# AIR

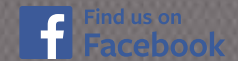
\*R-Values Calculated at 80° Ambient Temperature

# DSI QUALITY CIRCLE AWARD

Prime Time Manufacturing is proud to be recognized as an industry leader in value, reliability, and overall quality by the Recreational Vehicle Dealers Association. This was accomplished by committing ourselves to "A Higher Standard" in design, construction, testing, and customer service. Check us out – we know you'll be impressed!



www.primetimerv.com  
PO Box 330 • 55470 CR 1 • Elkhart, IN 46515



**FROG™ the Forest River Owners' Group!**

**FREE MEMBERSHIP**  
to Forest River Owners' Group  
www.forestriverfrog.com



Seal Tech Air Pressure Test



ETERNABOND®  
Construction



Advanced Engineering

Seek-A-Leak  
Pressure Test



65 Point  
Secondary PDI



www.ForestRiverBuyLocal.com

## 24/7 EMERGENCY ROADSIDE ASSISTANCE

For a worry-free ownership experience Forest River includes one year of Coach-Net RV Technical & Roadside Assistance with each RV purchase. Whether new to the RV lifestyle or an experienced RV enthusiast, Forest River owners have 24/7 access to technical, operational and emergency road service coverage throughout the US & Canada. Coach-Net's fast, dependable service is just a phone call away.



## ADDITIONAL SPECIFICATIONS:

**GVWR (Gross Vehicle Weight Rating)** - is the maximum permissible weight of the unit when fully loaded. It includes all weights, inclusive of all fluids, cargo, optional equipment and accessories. For safety and product performance do NOT exceed the GVWR.

**GAWR (Gross Axle Weight Rating)** is the maximum permissible weight, including cargo, fluids, optional equipment and accessories that can be safely supported by a combination of all axles.

Each Forest River RV is weighed at the manufacturing facility prior to shipping. A label identifying the unloaded vehicle weight of the actual unit and the cargo carrying capacity is applied to every Forest River RV prior to leaving our facilities. The load capacity of your unit is designated by weight, not by volume, so you cannot necessarily use all available space when loading your unit.



**PRE-DELIVERY INSPECTION FACILITY**  
20,000 square feet of quality assurance. The bare essentials for a premium product. This state-of-the-art facility gives immediate daily feedback to production for quality assurance in every unit built.



Web Based  
Customer Service



Executive Quality Audits



Rain Bay

All information contained in this brochure is believed to be accurate at the time of publication. However, during the model year, it may be necessary to make revisions and Forest River, Inc., reserves the right to make all such changes without notice, including prices, colors, materials, equipment and specifications as well as the addition of new models and the discontinuance of models shown in this brochure. Therefore, please consult with your Forest River, Inc., dealer and confirm the existence of any materials, design or specifications that are material to your purchase decision.

©2016 Prime Time Manufacturing, a Division Of Forest River, Inc., a Berkshire Hathaway Company. All Rights Reserved.



**Learn More**  
Scan this barcode using a QR Reader on your smart phone to learn more about Forest River.



A Berkshire Hathaway company.

Colton RV  
North Tonawanda, NY 14120  
(716) 694-0188  
(800) 628-4889  
www.ColtonRV.com

Colton RV  
Orchard Park, NY 14127  
(716) 957-3250  
(800) 628-4889  
www.ColtonRV.com

DEALER