

TIFFIN



2019

# *Wayfarer*

YOUR ESCAPE MACHINE





25 QW COCKPIT



LIVING AREA



# MORE VACATION. LESS PLANNING.

For 2019, the Tiffin Wayfarer offers more of everything you want. For starters, four distinct interior configurations are now available, including a slide-out option that redefines just how spacious a Class C coach can be. Each floor plan is designed to live as comfortably as a luxury suite, with Tiffin's trademark craftsmanship, high-end finishes, and smart spatial engineering. You'll also enjoy impressive extras, from standard features considered high-end upgrades on other coaches to upscale amenities developed exclusively for Tiffin's Class A models. All of this luxury — and a Mercedes-Benz chassis — at a very competitive price.





BED/BATH



25 QW MASTER BEDROOM



## MASTER SUITE

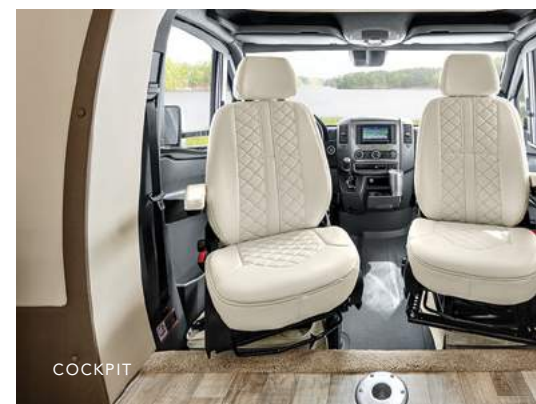
Sleeping accommodations vary by floor plan with a maximum capacity of six. Bathroom doors on certain floor plans swing forward, creating a more spacious private enclosure. The shower stall features a 6' 8" ceiling with a skylight and is installed at an angle to maximize width.





## MAIN COMPARTMENT

Designed for comfort and livability, the main living area features neutral tones to complement any décor. Tiffin's trademark luxury is reflected in high-end finishes throughout the cabin, from hardwood cabinetry and premium-grade linoleum flooring to elegant soft furnishings.



All interiors shown are 25 QW with Russet Cabinets and Sandstone Interior. To learn more about all of our décor and floor plan options, visit [tiffinmotorhomes.com](https://www.tiffinmotorhomes.com).







# INTERIOR DÉCOR

## CABINETS



ENGLISH CHESTNUT



HONEYCOMB



RUSSET

## LEATHERS



CRÉMÉ



DERBY



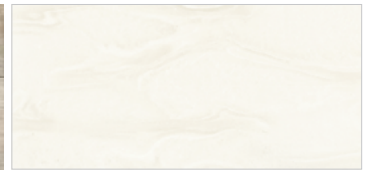
STRADA ENAMEL

## SANDSTONE

### FLOOR AND COUNTERTOP



FLOOR



COUNTERTOP

### CARPET



### OVERHEAD BUNK FABRIC



### WALLPAPER



### FABRICS



BEDROOM



LIVING AREA

### BEDROOM



Because of progressive improvements, specifications, standard and optional equipment are subject to change without notice or obligation. For a complete and up-to-date list of available options and specifications, visit [tiffinmotorhomes.com](http://tiffinmotorhomes.com).



Make your experience on the road all your own. Express yourself by choosing a cabinet finish and leather for your motorhome. You will also select one of our three offered décor packages: Sandstone, Tectona, or Truffle. In the 2019 Wayfarer, you'll be able to go in style no matter where you go.

**TECTONA**

**FLOOR AND COUNTERTOP**



FLOOR

COUNTERTOP

**CARPET**



**OVERHEAD BUNK FABRIC**



**WALLPAPER**



**FABRICS**



BEDROOM

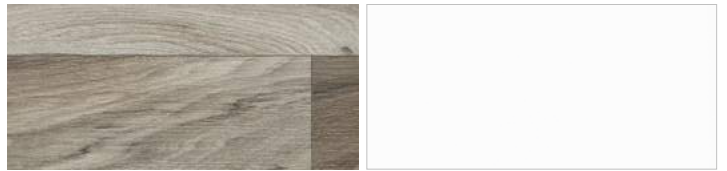
LIVING AREA

**BEDROOM**



**TRUFFLE**

**FLOOR AND COUNTERTOP**



FLOOR

COUNTERTOP

**CARPET**



**OVERHEAD BUNK FABRIC**



**WALLPAPER**



**FABRICS**



BEDROOM

LIVING AREA

**BEDROOM**

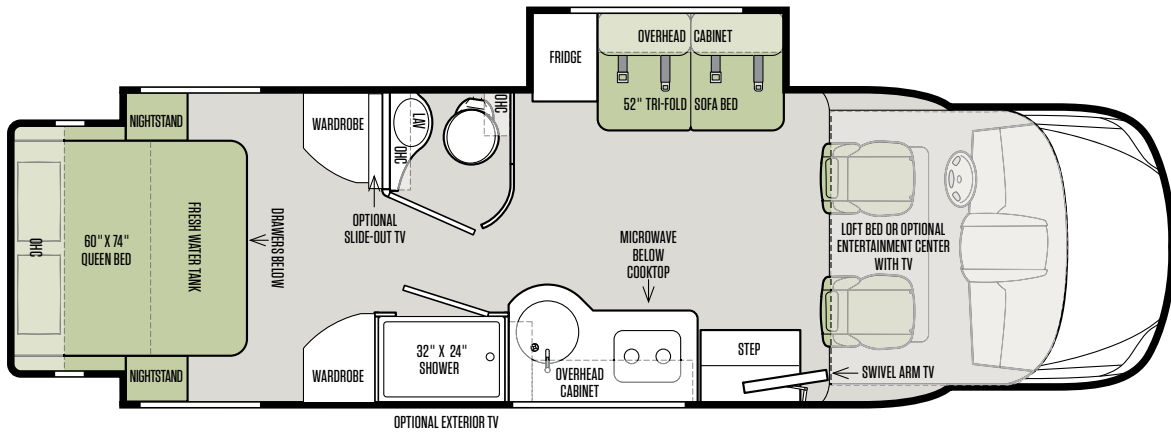


## FLOOR PLANS

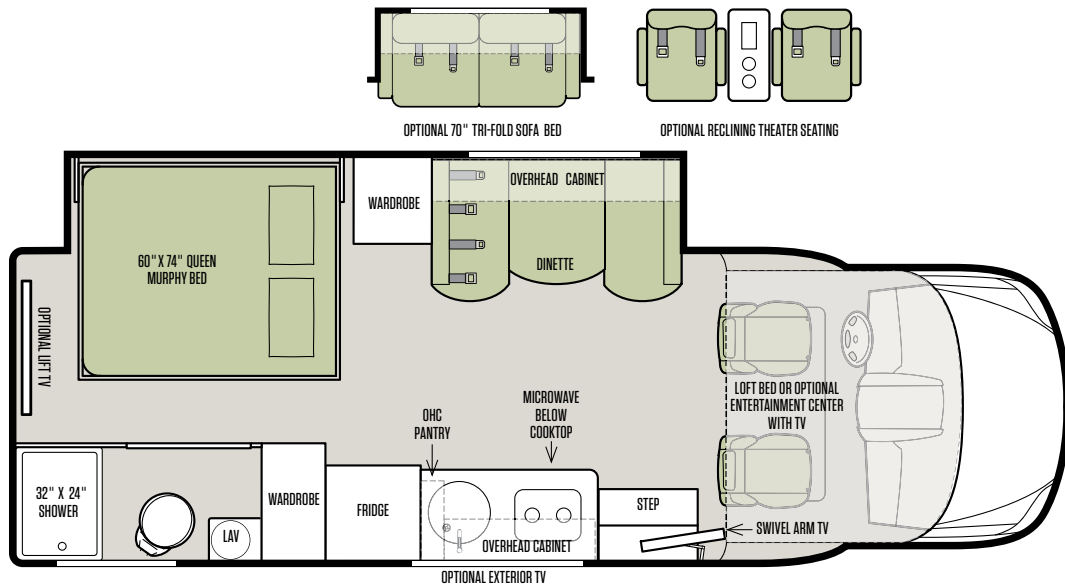


The design of every Tiffin floor plan must meet four essential criteria: Maximum space. Optimal organization. Relaxation plus. Engaging atmosphere. MORE plans offer your family the most comfortable layout for life on the road.

### 24 BW



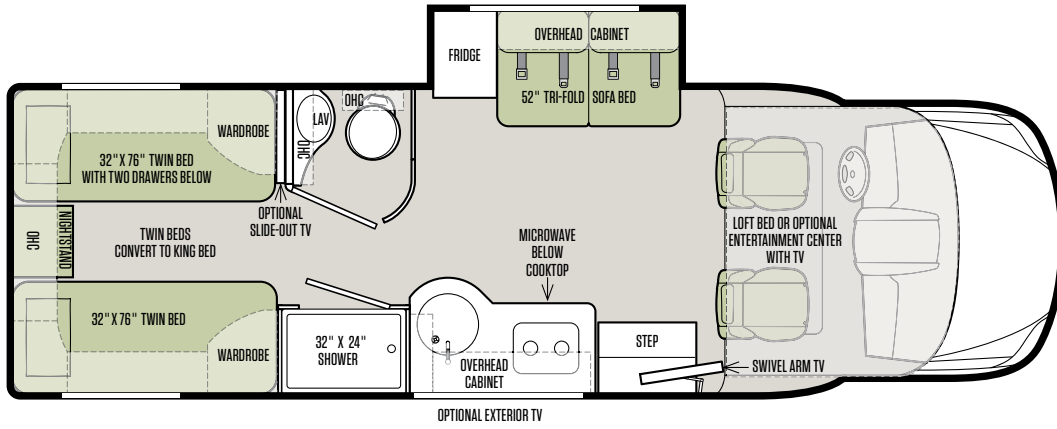
### 24 FW



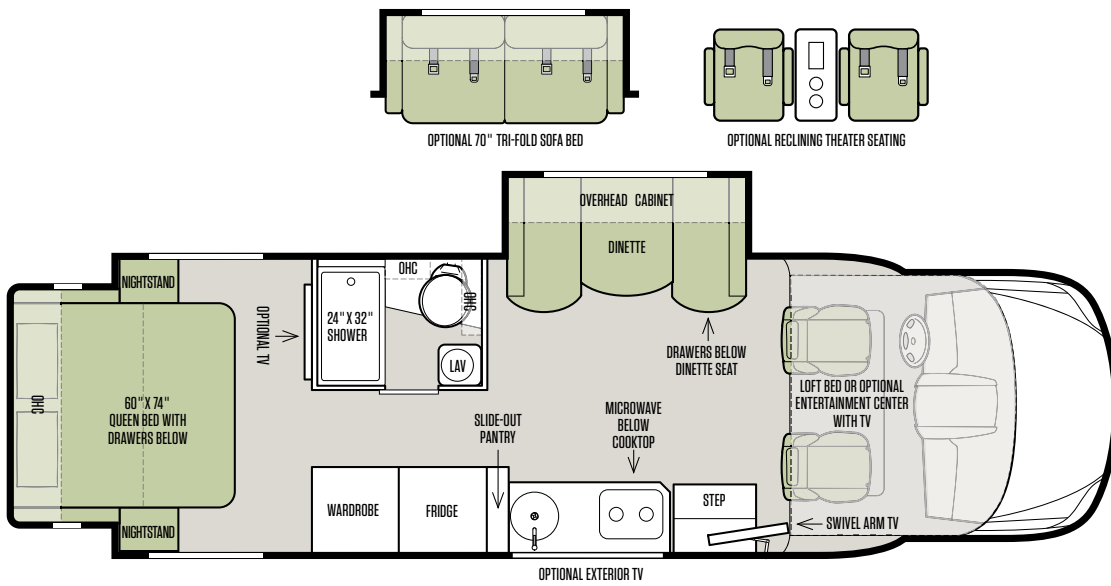
Because of progressive improvements, specifications, standard and optional equipment are subject to change without notice or obligation. For a complete and up-to-date list of available options and specifications, visit [tiffinmotorhomes.com](http://tiffinmotorhomes.com).



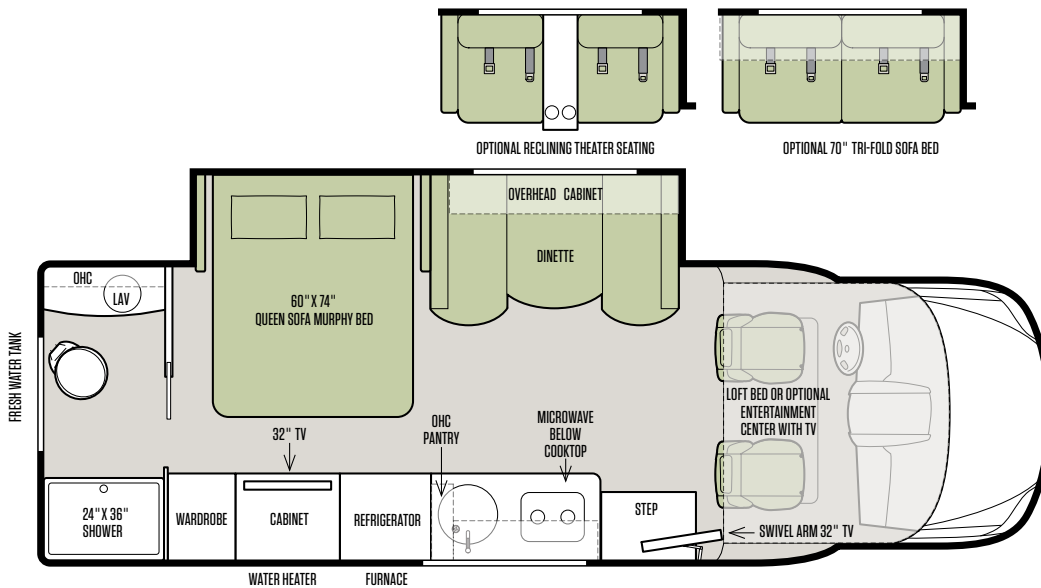
## 24 TW



## 25 QW



## 25 RW





## WELCOME TO WINFIELD. HOME OF THE WAYFARER.

The Wayfarer is built at Tiffin's production complex in Winfield, Alabama, a short distance from the Class A plant in Red Bay. To ensure a superior product, the new Class C facility has been customized to our precise specifications. The complex includes a 200,000-square-foot main production floor, with dedicated areas for cabinetry, R&D, and quality assurance.

A separate 30,000-square-foot building houses state-of-the-art paint booths.

### A FAMILY BUSINESS BUILT AROUND YOURS



Tiffin Motorhomes is known in the industry for their luxurious features and sophisticated engineering. Not only is this attention to detail seen in Tiffin's Class A coaches, but the same quality can be seen in their Class C line.



## PREMIUM PAINT SYSTEM

Our eight-step full-body paint system features premium grade paints sealed with three layers of superclear coat with ultraviolet protection. An additional layer of scratch-resistant plastic coating protects the front of the coach, stairwell, and entry door lock.



CORDOVA



FRONTIER



MOUNTAIN PEAK



GULFSIDE



OMNI



IMPERIAL

To learn more about our premium paint system or for a complete and up-to-date list of available options and specifications, as well as information on Tiffin's full line of motorhomes, visit [tiffinmotorhomes.com](http://tiffinmotorhomes.com).

# 2019 SPECIFICATIONS

## MERCEDES CHASSIS

### STANDARD ON ALL MODELS:

- 3.0 6-Cylinder Turbo Diesel Engine with 5-speed Automatic Tip Shift Transmission 188 HP/325 lb Torque
- GVWR: 11,030 lb
- GCWR: 15,250 lb
- GAWR- Front: 4,410 lb
- GAWR- Rear: 7,720 lb
- Lighting Package with Bi-xenon Headlamps
- Headlamp Washing System
- Multifunction Steering with Trip Computer
- Light and Rain Sensor
- Heated/Electric Adjustable Mirrors
- Windshield with Filter Brand
- Overhead Control Panel with Reading Lamps
- Lane Keeping Assist
- Collision Prevention Assist
- High Beam Assist
- Stainless Steel Wheel Liners
- 5,000 lb Rated Hitch with 500 lb Vertical Tongue Weight and 7-pin Connector
- SumoSprings Ride Assist System
- 170.3" Wheel Base
- 26.4 Gallon Fuel Tank
- DEF Tank (Gallons): 4.8
- Load Adaptive Electronic Stability (ESP)

## WEIGHTS AND MEASUREMENTS

FLOOR PLAN:	24 BW	24 FW	25 QW	24 TW	25 RW
Overall Length (Approximate)*	25' 7"	25' 7"	25' 7"	25' 7"	25' 7"
Overall Height with Roof Air (Maximum)	11' 4"	11' 4"	11' 4"	11' 4"	11' 4"
Interior Height	6' 8"	6' 8"	6' 8"	6' 8"	6' 8"
Overall Width	7' 6"	7' 6"	7' 6"	7' 6"	7' 6"
Interior Width	7' 3"	7' 3"	7' 3"	7' 3"	7' 3"
Fresh Water (Gallons)	31	35	31	38	38
Black Water (Gallons)	28	36	28	28	28
Grey Water (Gallons)	32	28	32	32	36
LPG Tank (Gallons; can only be filled to 80% capacity)	20 gallon (16 usable)	20 gallon (16 usable)	20 gallon (16 usable)	20 gallon (16 usable)	20 gallon (16 usable)
Basement Storage (Cubic Feet — Approximate)	54	37	54	68	32
Trailer Hitch Capacity**	5,000 lb	5,000 lb	5,000 lb	5,000 lb	5,000 lb

\* The approximated coach lengths do not include side-view mirrors.

\*\* Tow ratings and ability are subject to gross combined weight ratings on the tow vehicle.

## EXTERIOR

### STANDARD ON ALL MODELS:

- Girard Instant Hot Water heater
- One-piece Seamless Slide-out
- HD TV Antenna with Amplifier
- Two 12 V House Batteries (Group 27/180 Amp Hours)
- 30 Amp 110 V House Service
- Power Cord - 30' Permanently Attached
- 3.2 kw Diesel Generator
- 1000 Watt Inverter Pure Sine
- 110 V and 12 V House Load Center with Power Converter
- HD Over-the-Air TV Antenna
- Prep for Satellite
- Prep for Winegard Dome System
- Pre-wired for Solar Panels
- Park Cable and Ground Satellite Hook-up
- Carefree 14' Awning
- Automatic Lights in Exterior Compartment Doors
- 13.5 k Coleman Roof Mounted AC
- Wall-mount Thermostat with Built-in Temperature Sensor
- 30K BTU Propane Ducted Furnace
- 12 V Engineered Wiring Harnesses
- Entrance Door Assist Handle
- Driver/Passenger Courtesy Lights

AVAILABLE OPTIONS:	24 BW	24 FW	25 QW	24 TW	25 RW
Exterior TV	<input type="checkbox"/>	<input type="checkbox"/>	<input type="checkbox"/>	<input type="checkbox"/>	<input type="checkbox"/>
15 k Roof Mounted AC with Heat Pump	<input type="checkbox"/>	<input type="checkbox"/>	<input type="checkbox"/>	<input type="checkbox"/>	<input type="checkbox"/>
Solar Panels	<input type="checkbox"/>	<input type="checkbox"/>	<input type="checkbox"/>	<input type="checkbox"/>	<input type="checkbox"/>
Equalizer 4-point Leveling Jacks	<input type="checkbox"/>	<input type="checkbox"/>	<input type="checkbox"/>	<input type="checkbox"/>	<input type="checkbox"/>
Electric Stabilizers	<input type="checkbox"/>	<input type="checkbox"/>	<input type="checkbox"/>	<input type="checkbox"/>	<input type="checkbox"/>
Truma Comfort Plus Instant Hot Water Heater	<input type="checkbox"/>	<input type="checkbox"/>	<input type="checkbox"/>	<input type="checkbox"/>	<input type="checkbox"/>
2000 Watt Inverter Pure Sine	<input type="checkbox"/>	<input type="checkbox"/>	<input type="checkbox"/>	<input type="checkbox"/>	<input type="checkbox"/>

## INTERIOR

### STANDARD ON ALL MODELS:

- Separate Speaker Zones
- Stereo System
- LED Lights
- Spyder Multiplex Coach Control System
- Privacy Shades
- 2 Captain's Chair Lounge Cushions
- Soft Vinyl Ceiling
- Professionally Designed Interior Décor Packages
- Premium Fabric Suites
- Combination Carbon Monoxide and Propane Detector

AVAILABLE OPTIONS:	24 BW	24 FW	25 QW	24 TW	25 RW
Chestnut Cabinets	<input type="checkbox"/>	<input type="checkbox"/>	<input type="checkbox"/>	<input type="checkbox"/>	<input type="checkbox"/>
Honeycomb Cabinets	<input type="checkbox"/>	<input type="checkbox"/>	<input type="checkbox"/>	<input type="checkbox"/>	<input type="checkbox"/>
Russet Cabinets	<input type="checkbox"/>	<input type="checkbox"/>	<input type="checkbox"/>	<input type="checkbox"/>	<input type="checkbox"/>
Central Vacuum System	<input type="checkbox"/>	<input type="checkbox"/>	<input type="checkbox"/>	<input type="checkbox"/>	<input type="checkbox"/>





24 TW AND 24 BW KITCHEN



25 QW BEDROOM STORAGE



25 QW WARDROBE

## COCKPIT

### STANDARD ON ALL MODELS:

- USB Port
- Radio
- Back-up Camera
- Power Cab Door Locks
- Power Cab Door Windows
- Power Mirrors with Defrost
- Cruise Control
- Tilt Telescoping Steering Wheel
- Chassis/House Battery Radio Power Switch
- Sun Visors
- 12 V Power Outlet
- Central Cab Locking with 2 Remotes
- Windshield Shades
- Swivel Seat Base for Both Driver and Passenger Seat
- Driver and Passenger Door Courtesy Lights

AVAILABLE OPTIONS:	24 BW	24 FW	25 QW	24 TW	25 RW
In-dash Navigation System	O	O	O	O	O
Premium Sliding Window and Windshield Shade	O	O	O	O	O
Side Cameras (Must have In-dash Nav)	O	O	O	O	O

## LIVING AREA

### STANDARD ON ALL MODELS:

- Living Area Swivel Arm TV
- Tinted Living Area Windows
- Overhead Bunk
- House Radio/DVD/Bluetooth

AVAILABLE OPTIONS:	24 BW	24 FW	25 QW	24 TW	25 RW
52" Tri-fold Sofa Bed	S	O	O	S	NA
Face-to-face Dinette	NA	S	S	NA	S
Theater Seats	NA	O	O	NA	O
Overhead Entertainment Center	O	O	O	O	O
70" Sofa with Hide-a-bed (54" x 74")	NA	NA	NA	NA	O

## KITCHEN

### STANDARD ON ALL MODELS:

- Cooktop with Built-in Cover
- Convection Microwave
- 5 Cubic Foot Refrigerator w/2 Batteries for TW and BW
- 6.5 Cubic Foot Refrigerator w/2 Batteries for FW, QW, and RW
- Single Bowl Sink
- Designer Faucet
- Over-the-Counter Lighting
- Under-the-Counter Lighting
- Fire Extinguisher
- Spice Rack
- 110 V Outlet

## BEDROOM

### STANDARD ON ALL MODELS:

- Inverted Outlets in Bedroom for CPAP Machine
- USB Port
- LED Reading Lights

AVAILABLE OPTIONS:	24 BW	24 FW	25 QW	24 TW	25 RW
Bedroom TV	O	NA	O	O	S
Bedroom Lift TV	NA	O	NA	NA	NA
Queen Mattress (60" x 74")	S	NA	S	NA	NA
Queen Murphy Bed (60" x 74")	NA	S	NA	NA	NA
Queen Sofa Murphy Bed (60" x 74")	NA	NA	NA	NA	S
King Mattress (86" x 76")	NA	NA	NA	S	NA
Two Twin Mattress (32" x 76")	NA	NA	NA	S	NA
Two Wardrobes	S	NA	NA	S	NA
Nightstands	S	NA	S	S	S

## BATHROOM

AVAILABLE OPTIONS:	24 BW	24 FW	25 QW	24 TW	25 RW
Porcelain Vessel Sink with Chrome Faucet	NA	NA	NA	NA	S
Vanity Storage	NA	NA	NA	NA	S



## WHEREVER YOU GO, WE GO

Tiffin Motorhomes is proud to be one of the few family-owned manufacturers in the industry, and it makes a significant difference in how our company operates versus our competitors. For starters, with the Tiffin name on every coach, building a superior motorhome isn't just our occupation. It's a matter of personal pride, a pursuit we have committed our lives to perfecting.

We know it's not just about where a coach will take you, but the experience you take from the journey. That's why every Tiffin motorhome is made to move you.

LIMITED WARRANTY

3

YEAR PAINT, DELAMINATION STRUCTURE

1

YEAR LIMITED WARRANTY

5

YEAR OR 100,000 MILES CHASSIS ENGINE LIMITED WARRANTY

3

YEAR OR 36,000 MILES MERCEDES-BENZ CHASSIS LIMITED WARRANTY

1

YEAR SAFETY RIDE PLUS

Colton RV  
North Tonawanda, NY 14120  
(716) 694-0188  
(800) 628-4889  
www.ColtonRV.com

Colton RV  
Orchard Park, NY 14127  
(716) 957-3250  
(800) 628-4889  
www.ColtonRV.com



TIFFINMOTORHOMES.COM

FOR PARTS & SERVICE CALL  
205/487.4710

/TIFFINMOTORHOMES  
 /TIFFINMOTORHOMES  
 /TIFFINMOTORHOME  
 /TIFFINMOTORHOME

Some interior furnishings not included. Unless where noted, all content ©2019 Tiffin Motorhomes, Inc. Allegro®, Allegro Breeze®, Allegro Red®, Phaeton®, Allegro Bus®, Zephyr®, Wayfarer®, Roughing It Smoothly®, Open Road®, PowerGlide®, and Pusher® are registered trademarks of Tiffin Motorhomes, Inc. All rights reserved.