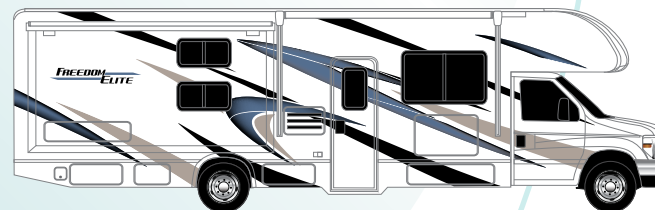
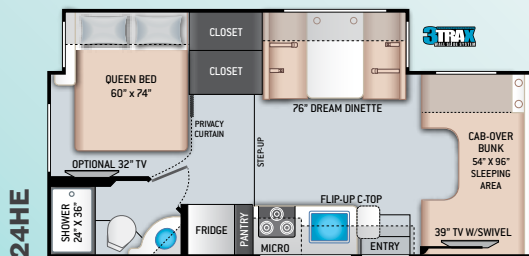
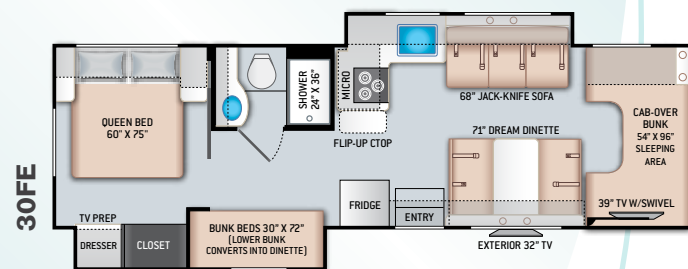
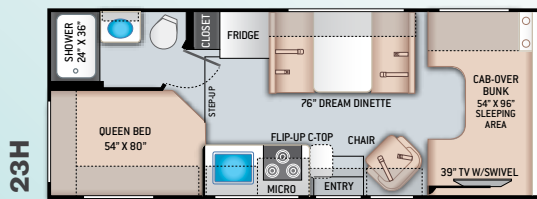
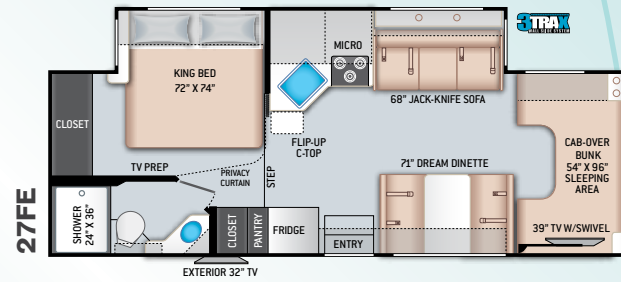
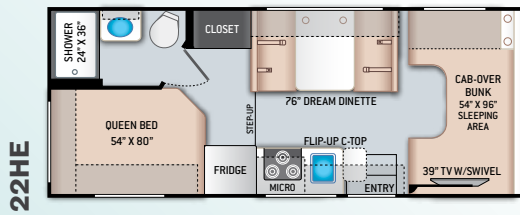
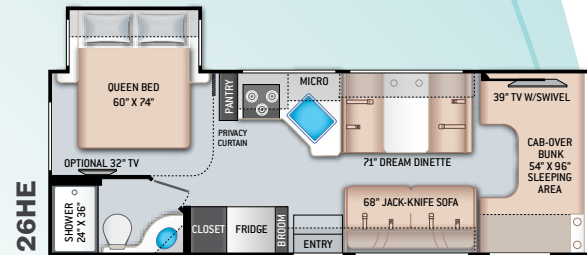
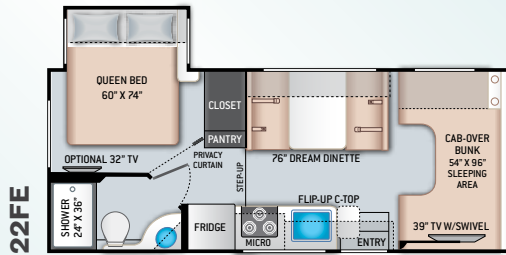


FREEDOM ELITE®



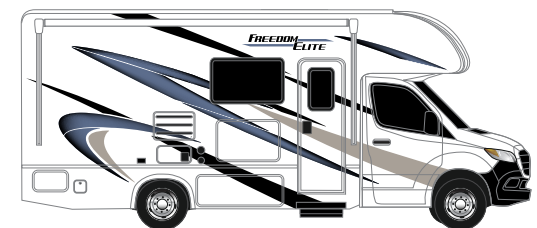
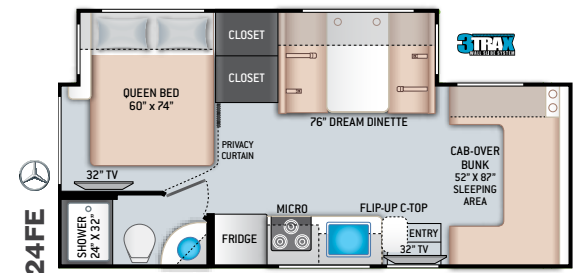
Class C Floorplans



STANDARD GRAPHICS



Sprinter Floorplans



SPRINTER STANDARD GRAPHICS

Featured Highlights

CONSTRUCTION & EXTERIOR

- Ford® E-Series Chassis - 7.3L V8 350HP 468 lb-ft Torque - w/TPM's (N/A 24FE)
- Mercedes-Benz® Sprinter Chassis with 3.0L V6, 188HP & 325 lb.-ft. Torque (24FE)
- Premium One-Piece Roof
- One-Piece Fiberglass Front Cap
- Slick White Fiberglass Exterior with Graphics Package
- Electric Stabilizing System (24FE, 24HE & 27FE)
- MEGA-Storage™ Compartment
- Portable Folding Table (23H)
- Lighted Rotocast Storage Compartments
- Flush Mount Radius Compartment Doors
- Power Patio Awning with Integrated LED Lighting
- Slideout Room Topper Awnings (N/A 22HE & 23H)
- Roof Ladder
- Electric Entry Step (24FE)
- Drop-Down Stairwell Entry Step (N/A 24FE)
- Black Framed Windows
- 5,000-lb. Trailer Hitch (24FE)
- 8,000-lb. Trailer Hitch (N/A 24FE)

CONSTRUCTION & EXTERIOR OPTION

- Chevrolet® Dually Chassis with 6.0L V8, 323HP & 373 lb.-ft. Torque (22FE, 22HE, 23H, 24HE, & 26HE)

AUTOMOTIVE & COCKPIT

- 7" Touchscreen Dash Radio, Plug and Play Screen Mirroring with Back-Up Monitor (N/A 24FE)
- Touchscreen Dash Radio (24FE)
- Rearview Mirror with Back Up System with Integrated Camera (24FE)
- SiriusXM® Ready
- Deluxe Exterior Mirrors (N/A 24FE)
- Deluxe Heated/Remote Exterior Mirrors (24FE)
- Power Windows & Door Locks
- Keyless Entry System (24FE, 27FE & 30FE)
- Tilt Steering Wheel (N/A 24FE)
- Cruise Control
- Map Light
- Emergency Engine Start Switch (N/A 24FE)
- Leatherette Driver & Passenger Captains Chairs (24FE)
- Dash Applique (24FE)
- Windshield Privacy Curtain
- Aluminum Running Boards (N/A 24FE)
- Valve Stem Extenders (24FE, 27FE & 30FE)
- Stainless Steel Wheel Liners
- LED Taillights

INTERIOR

- Rubber Tread Entry Steps with Lighted Step Well
- Residential Vinyl Flooring
- 84" Interior Ceiling Height
- Hard Vinyl Ceiling
- LED Lighting

- Ceiling Ducted Air Conditioning System (24FE, 24HE, 26HE, 27FE & 30FE)
- Cab-Over Sleeping Area with Cup Holders and Telescoping Bunk Ladder
- Ivory Coast Flat Panel Cabinet Doors with Black Hardware & Faucets
- Ball-Bearing Metal Drawer Guides
- Window Privacy Shades
- Dream Dinette® Booth
- Wireless Phone Charger with USB Charging Port on Dinette Table Top
- Fabric Barrel Chair (23H)
- Fabric Jack-Knife Sofa (26HE, 27FE & 30FE)

KITCHEN

- Double Door Refrigerator
- Recessed 3-Burner Gas Cooktop/Oven with Glass Cover (N/A 24FE)
- Recessed 3-Burner Gas Cooktop with Glass Cover (24FE)
- Protective Cover & Task Lighting Above Cooktop
- Metal Pan Drawer Front(s) Matching Cooktop Below Cooktop (N/A 24FE & 26HE)
- Convection Microwave Oven (24FE)
- Microwave Oven (N/A 24FE)
- Pressed Laminated Countertops Throughout
- Flip-Up Countertop Extension (N/A 26HE)
- Pop-Up Countertop Outlet & Charging Center for Electronics (27FE & 30FE)
- Pantry (24HE, 26HE & 27FE)
- Kitchen Waste Basket

- Large Single Bowl Stainless Steel Sink with Single Handle Faucet
- Kitchen Countertop LED Accent Lighting

BEDROOM & BATHROOM

- King Size Bed (27FE)
- Queen Size Bed (N/A 27FE)
- Bedsread & Pillow Shams
- Bunk Beds that Convert to Dinette with Ladder (30FE)
- Bedroom 12-volt Outlet for CPAP Machine
- Foot Flush Toilet
- Stainless Steel Bathroom Sink
- Robe/Towel Hooks in Bathroom
- Shower with Curtain (22FE & 22HE)
- Shower with Anti-Bacterial Curtain (N/A 22FE & 22HE)

ENTERTAINMENT

- 32" TV on Manual Swivel Over Entry Door (24FE)
- 39" TV on Manual Swivel in Cab-Over (N/A 24FE)
- 32" TV in Bedroom (24FE)
- Bedroom TV Prep with HDMI Cable (N/A 22HE, 23H & 24FE)
- Tablet Holder and USB Charge Port in Bunk Beds (30FE)
- HDMI Video Distribution Box (N/A 22HE & 23H)
- Cable TV Ready
- Digital TV Antenna
- Satellite Mounting Backer in Roof

- Wall Cubby with Net & USB Charging Port
- Exterior 32" TV on Swivel Bracket with Bluetooth® Built-in Sound Bar & Radio (27FE & 30FE)

ELECTRICAL & PLUMBING

- Onan® RV QG 3600 LP Generator (24FE)
- Onan® RV QG 4000 Gas Generator (N/A 24FE)
- 30-amp Shoreline Power Cord
- Automatic Transfer Switch with Power Protection
- Single Roof Air Conditioner
- Auxiliary House Battery
- Battery Disconnect Switch
- Battery Tray for Four (4) Batteries
- 100-watt Solar Charging System with Solar Controller with Group 31 Battery (24FE)
- Solar Prep - Includes Solar Controller (N/A 24FE)
- Exterior LP Connection (24FE, 27FE & 30FE)
- Tankless Water Heater (24FE)
- 6-gallon DSI Gas/Electric Water Heater (N/A 24FE)
- Water Heater Bypass System
- 1" Fresh Water Tank Drain
- 360° Siphon® RV Holding Tank Vent Cap
- Black Tank Flush System
- Outside Shower (24FE & 30FE)
- Systems Control Center

For a complete listing of available features, visit freedom-motorhomes.com.

Colton RV & Marine
3122 Niagara Falls Blvd
North Tonawanda, NY 14120
(716) 694-0188
www.ColtonRV.com

Colton RV
3443 Southwestern Blvd.
Orchard Park, NY 14127
(716) 957-3250
www.Coltonrv.com

	22FE	22HE	23H	24HE	26HE	27FE	30FE	24FE
Chassis	Ford / Chevy	Ford / Chevy	Ford / Chevy	Ford / Chevy	Ford / Chevy	Ford	Ford	Mercedes-Benz® Sprinter
Gross Vehicle (GVWR)	12,500 / 12,300	12,500 / 12,300	12,500 / 12,300	12,500 / 14,200	12,500 / 14,200	14,500	14,500	11,030
Gross Combined (GCWR)	18,500 / 16,000	18,500 / 16,000	18,500 / 16,000	18,500 / 20,000	18,500 / 20,000	22,000	22,000	15,250
Wheel Base	158" / 159"	158" / 159"	158" / 159"	168" / 169"	183" / 184"	209"	223"	170.3"
Exterior Length (w/o ladder)	24'-1" / 24'-7"	24'-1" / 24'-7"	24'-11" / 25'-5"	25'-2" / 25'-8"	27'-7" / 28'-1"	29'-1"	32'-4"	24'-10"
Exterior Height (w/AC)	11'	11'	11'	11'-2"	11'	11'	11'	11'-8"
Exterior Width (w/o mirrors)	99"	99"	99"	99"	99"	99"	99"	90"
Interior Height (living area)	84"	84"	84"	84"	84"	84"	84"	84"
Awning Size	15'	15'	15'	16'	18'	20'	10'-6"	15'
Fuel (gal)	55 / 57	55 / 57	55 / 57	55 / 57	55 / 57	55	55	26.4
LPG (lbs)	40.9	40.9	40.9	40.9	40.9	40.9	40.9	68.2
Fresh/Waste/Gray Water (gal)	40 / 29 / 25	40 / 24.5 / 37	40 / 24.5 / 38.5	40 / 34.5 / 37	40 / 29 / 25	40 / 34.5 / 37	40 / 26 / 31	30 / 24.5 / 38
Water Heater (gal)	6	6	6	6	6	6	6	Tankless
Furnace (BTUs)	19,000	19,000	19,000	30,000	30,000	30,000	30,000	30,000
Exterior Storage Capacity (cu. ft.)	30.9	50.3	69.5	39	40	55.5	64.8	48.5
Hitch Weight Rating (lbs)	8,000	8,000	8,000	8,000	8,000	8,000	8,000	5,000

Colton RV
489 Bushkill Plaza LN #9665
Wind Gap, PA 18091
(610) 863-5239
www.ColtonRV.com

IMPORTANT—PLEASE READ: This brochure reflects product design, fabrication, material, components and specifications at the date of printing, which date is disclosed below. Please visit us online at ThorMotorCoach.com or consult with your selling dealership for the latest in standards, options, specification and technical information. Photographs in the brochure may depict optional equipment or may only be available in certain floor plans. Components, appliances and the chassis may have been manufactured in a calendar year before the vehicle's designated model year. All capacities are approximate. The actual length of the vehicle may differ from that indicated in the brochure due to variances in the manufacturing processes and/or installed components. All dry weights are based on standard model features and do not include optional features or equipment. Component part and appliance manufacturers issue limited warranties covering portions of the vehicle not covered under the limited warranty we issue.

Copyright Thor Motor Coach, Inc. © MY 04/26/2021

freedom-motorhomes.com