

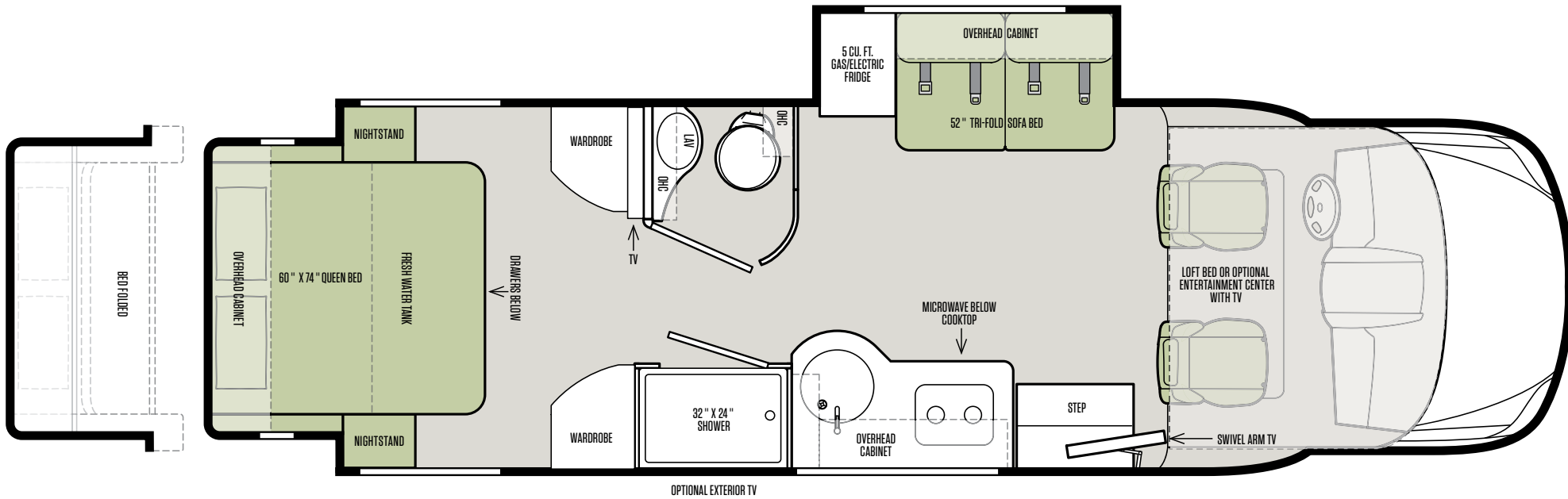


Wayfarer

TIFFIN
MOTORHOMES

The Wayfarer is the first luxury Class C coach designed and built by Tiffin Motorhomes, one of the nation's largest manufacturers of Class A models. Family-owned and operated for more than 40 years, Tiffin takes great pride in bringing its legacy of exceptional craftsmanship and luxury to Class C enthusiasts.

24 BW



FEATURES FOR THE WAYFARER BY TIFFIN MOTORHOMES

MERCEDES-BENZ SPRINTER CHASSIS

- 3.0 6-Cylinder Turbo Diesel Engine with 5-speed Automatic Tip Shift Transmission 188 HP/325 lb Torque
- 11,030 lb GVWR
- 15,250 lb GCWR
- 4,410 lb Front GAWR
- 7,720 lb Rear GAWR
- Lighting Package with Bi-xenon Headlamps
- Headlamp Washing System
- Multi-function Steering with Trip Computer
- Light & Rain Sensor
- Matrix Display
- Heated/Electric Adjustable Mirrors
- Windshield with Filter Band
- Overhead Control Panel with Reading Lamps
- Lane Keeping Assist
- Collision Prevention Assist
- High Beam Assist
- Stainless Steel Wheel Liners
- 5,000 lb Rated Hitch with 500 lb Vertical Tongue Weight & 7 Pin Connector – Tow Ratings & Ability are Subject to Gross Combined Weight Ratings on the Tow Vehicle
- SumoSprings Ride Assist System
- 170" Wheel Base
- 26.4 Gallon Fuel Tank
- Electric Stabilizers – Optional

WEIGHTS & MEASURES

- Overall Height 11' 4"
- Overall Length 25' 7"

- Interior Height 6' 8"
- Interior Width 90"
- 32 Gallon Fresh Water Tank
- 27 Gallon Black Water Tank
- 33 Gallon Grey Water Tank
- 20 Gallon Propane Tank/16 Gallon Usable
- Instant Hot Water
- House Water Filter System
- Black Tank Flush
- Driver Side Exterior Service Center with Plumbing & Drain Connections
- 12 V Pad Heaters on Black & Grey Tanks
- Water Pump (Shurflo® 3.0 GPM/55 PSI)
- Gravity Potable Fresh Water Fill
- Pressurized City Fresh Water Fill

GENERAL EXTERIOR

- Two Seamless Slide-outs
- 54 Cubic Feet of Outside Storage
- HD TV Antenna with Amplifier
- Two 12 V House Batteries (Group 27/180 Amp Hours)
- 30 Amp 110 V House Service
- Power Cord – 30' Permanently Attached
- 3.2 kw Onan® Diesel Generator
- 1000 Watt Magnum® Inverter
- 110 V & 12 V House Load Center with Power Converter
- HD Over-the-Air TV Antenna
- Prep for Winegard® Dome System
- Pre-wired for Solar Panels
- Park Cable & Ground Satellite Hook-Up

- Carefree 14' Awning
- Wind Sensor
- Combination Carbon Monoxide & Propane Detector
- Automatic Lights in Exterior Compartment Doors
- 13.5 k Coleman Roof Mounted AC
- Wall Mount Thermostat with Built-in Temperature Sensor
- 30 k BTU Propane Ducted Furnace
- 12 V Wiring Supplied Through Engineered Wiring Harnesses
- Exterior TV – Optional
- 15 k Roof Mounted AC with Heat Pump – Optional

COCKPIT

- Dash Entertainment System
- Back-up Camera
- Power Cab Door Locks
- Power Cab Door Windows
- Power Mirrors with Defrost
- Cruise Control
- Tilt Telescoping Steering Wheel
- Chassis/House Battery Radio Power Switch
- Sun Visors
- 12 V Power Outlet
- Central Cab Locking with 2 IR Remotes
- Windshield Shades
- Swivel Seat Base for Both Driver & Passenger Seat
- Dash Entertainment System with GPS – Optional
- Premium Sliding Window & Windshield Shade – Optional

GENERAL INTERIOR

- Stereo System

- LED Lights
- Spyder® Multiplex Coach Control System
- Satellite System Compatible
- Privacy Shades
- Booster Seats
- Soft Vinyl Ceiling
- Vinyl Flooring Throughout
- Entrance Door Assist Handle
- USB Port
- Professionally Designed Interior Décor Packages
- Premium Fabric Suites – Teak or Windsong
- Amber Glazed Alder Cabinets – Optional
- Russet Cabinets – Optional

LIVING AREA

- Living Area TV
- Loft Bed over Cab
- Tinted Living Area Windows
- 52" Tri-fold Sofa Bed – Standard
- Entertainment System over Cab – Optional

KITCHEN

- 2-burner Cooktop with Tempered Glass Cover
- Convection Microwave
- 5 Cubic Foot Gas/Electric Refrigerator
- Single Bowl Sink

BEDROOM

- Queen Mattress (60" x 74")
- Two Wardrobes
- TV – Optional

FULL-BODY PAINT SCHEMES



BIRCHWOOD



COASTAL MIST



OBSIDIAN



Wayfarer

WAYFARER BY TIFFIN MOTORHOMES
625 FAWN GROVE ROAD | WINFIELD, AL 35594
PHONE 205-487-4710 | TIFFINMOTORHOMES.COM



Wayfarer

TIFFIN
MOTORHOMES

The Wayfarer is the first luxury Class C coach designed and built by Tiffin Motorhomes, one of the nation's largest manufacturers of Class A models. Family-owned and operated for more than 40 years, Tiffin takes great pride in bringing its legacy of exceptional craftsmanship and luxury to Class C enthusiasts.

24 QW



FEATURES FOR THE WAYFARER BY TIFFIN MOTORHOMES

MERCEDES-BENZ SPRINTER CHASSIS

- 3.0 6-Cylinder Turbo Diesel Engine with 5-speed Automatic Tip Shift Transmission 188 HP/325 lb Torque
- 11,030 lb GVWR
- 15,250 lb GCWR
- 4,410 lb Front GAWR
- 7,720 lb Rear GAWR
- Lighting Package with Bi-xenon Headlamps
- Headlamp Washing System
- Multi-function Steering with Trip Computer
- Light & Rain Sensor
- Matrix Display
- Heated/Electric Adjustable Mirrors
- Windshield with Filter Band
- Overhead Control Panel with Reading Lamps
- Lane Keeping Assist
- Collision Prevention Assist
- High Beam Assist
- Stainless Steel Wheel Liners
- 5,000 lb Rated Hitch with 500 lb Vertical Tongue Weight & 7 Pin Connector – Tow Ratings & Ability are Subject to Gross Combined Weight Ratings on the Tow Vehicle
- SumoSprings Ride Assist System
- 170" Wheel Base
- 26.4 Gallon Fuel Tank
- Electric Stabilizers – Optional

WEIGHTS & MEASURES

- Overall Height 11' 4"
- Overall Length 25' 3"

- Interior Height 6' 8"
- Interior Width 90"
- 32 Gallon Fresh Water Tank
- 27 Gallon Black Water Tank
- 33 Gallon Grey Water Tank
- 20 Gallon Propane Tank/16 Gallon Usable
- 6 Gallon Gas/Electric Hot Water Heater
- House Water Filter System
- Black Tank Flush
- Driver Side Exterior Service Center with Plumbing & Drain Connections
- 12 V Pad Heaters on Black & Grey Tanks
- Water Pump (Shurflo® 3.0 GPM/55 PSI)
- Gravity Potable Fresh Water Fill
- Pressurized City Fresh Water Fill

GENERAL EXTERIOR

- One-piece Seamless Slide-outs
- 54 Cubic Feet of Outside Storage
- HD TV Antenna with Amplifier
- Two 12 V House Batteries (Group 27/180 Amp Hours)
- 30 Amp 110 V House Service
- Power Cord – 30' Permanently Attached
- 3.2 kw Onan® Diesel Generator
- 1000 Watt Magnum® Inverter
- 110 V & 12 V House Load Center with Power Converter
- HD Over-the-Air TV Antenna
- Prep for Winegard® Dome System
- Pre-wired for Solar Panels
- Park Cable & Ground Satellite Hook-Up
- Carefree 14' Awning

- Wind Sensor
- Combination Carbon Monoxide & Propane Detector
- Automatic Lights in Exterior Compartment Doors
- 13.5 k Coleman Roof Mounted AC
- Wall Mount Thermostat with Built-in Temperature Sensor
- 30 k BTU Propane Ducted Furnace
- 12 V Wiring Supplied Through Engineered Wiring Harnesses
- Exterior TV – Optional
- 15 k Roof Mounted AC with Heat Pump – Optional

COCKPIT

- Dash Entertainment System
- Back-up Camera
- Power Cab Door Locks
- Power Cab Door Windows
- Power Mirrors with Defrost
- Cruise Control
- Tilt Telescoping Steering Wheel
- Chassis/House Battery Radio Power Switch
- Sun Visors
- 12 V Power Outlet
- Central Cab Locking with 2 IR Remotes
- Windshield Shades
- Swivel Seat Base for Both Driver & Passenger Seat
- Dash Entertainment System with GPS – Optional
- Premium Sliding Window & Windshield Shade – Optional

GENERAL INTERIOR

- Stereo System
- LED Lights
- Spyder® Multiplex Coach Control System

- Satellite System Compatible
- Privacy Shades
- Booster Seats
- Soft Vinyl Ceiling
- Vinyl Flooring Throughout
- Entrance Door Assist Handle
- USB Port
- Professionally Designed Interior Décor Packages
- Premium Fabric Suites – Teak or Windsong
- Amber Glazed Alder Cabinets – Optional
- Russet Cabinets – Optional

LIVING AREA

- Living Area TV
- Loft Bed over Cab
- Booth Dinette – Standard
- Tinted Living Area Windows
- 70" Tri-fold Sofa Bed – Optional
- Entertainment System over Cab – Optional

KITCHEN

- 2-burner Cooktop with Tempered Glass Cover
- Convection Microwave
- 6.3 Cubic Foot Gas/Electric Refrigerator
- Single Bowl Sink

BEDROOM

- Queen Mattress (60" x 74")
- TV – Optional

FULL-BODY PAINT SCHEMES



BIRCHWOOD



COASTAL MIST



OBSIDIAN



Wayfarer

WAYFARER BY TIFFIN MOTORHOMES
625 FAWN GROVE ROAD | WINFIELD, AL 35594
PHONE 205-487-4710 | TIFFINMOTORHOMES.COM

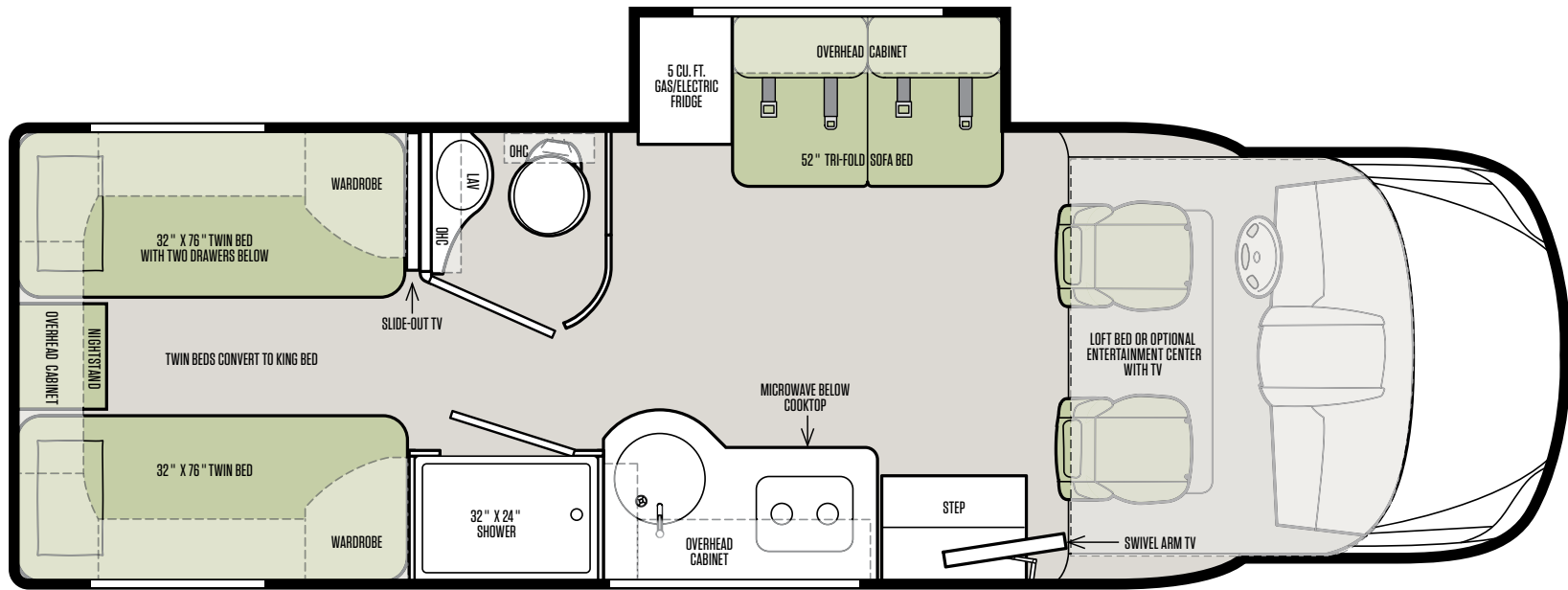


Wayfarer

TIFFIN
MOTORHOMES

The Wayfarer is the first luxury Class C coach designed and built by Tiffin Motorhomes, one of the nation's largest manufacturers of Class A models. Family-owned and operated for more than 40 years, Tiffin takes great pride in bringing its legacy of exceptional craftsmanship and luxury to Class C enthusiasts.

24 TW



FEATURES FOR THE WAYFARER BY TIFFIN MOTORHOMES

MERCEDES-BENZ SPRINTER CHASSIS

- 3.0 6-Cylinder Turbo Diesel Engine with 5-speed Automatic Tip Shift Transmission 188 HP/325 lb Torque
- 11,030 lb GVWR
- 15,250 lb GCWR
- 4,410 lb Front GAWR
- 7,720 lb Rear GAWR
- Lighting Package with Bi-xenon Headlamps
- Headlamp Washing System
- Multi-function Steering with Trip Computer
- Light & Rain Sensor
- Matrix Display
- Heated/Electric Adjustable Mirrors
- Windshield with Filter Band
- Overhead Control Panel with Reading Lamps
- Lane Keeping Assist
- Collision Prevention Assist
- High Beam Assist
- Stainless Steel Wheel Liners
- 5,000 lb Rated Hitch with 500 lb Vertical Tongue Weight & 7 Pin Connector – Tow Ratings & Ability are Subject to Gross Combined Weight Ratings on the Tow Vehicle
- SumoSprings Ride Assist System
- 170" Wheel Base
- 26.4 Gallon Fuel Tank
- Electric Stabilizers – Optional

WEIGHTS & MEASURES

- Overall Height 11' 4"
- Overall Length 25' 7"

- Interior Height 6' 8"
- Interior Width 90"
- 40 Gallon Fresh Water Tank
- 27 Gallon Black Water Tank
- 33 Gallon Grey Water Tank
- 20 Gallon Propane Tank/16 Gallon Usable
- Instant Hot Water
- House Water Filter System
- Black Tank Flush
- Driver Side Exterior Service Center with Plumbing & Drain Connections
- 12 V Pad Heaters on Black & Grey Tanks
- Water Pump (Shurflo® 3.0 GPM/55 PSI)
- Gravity Potable Fresh Water Fill
- Pressurized City Fresh Water Fill

GENERAL EXTERIOR

- One-piece Seamless Slide-outs
- 68 Cubic Feet of Outside Storage
- HD TV Antenna with Amplifier
- Two 12 V House Batteries (Group 27/180 Amp Hours)
- 30 Amp 110 V House Service
- Power Cord – 30' Permanently Attached
- 3.2 kw Onan® Diesel Generator
- 1000 Watt Magnum® Inverter
- 110 V & 12 V House Load Center with Power Converter
- HD Over-the-Air TV Antenna
- Prep for Winegard® Dome System
- Pre-wired for Solar Panels
- Park Cable & Ground Satellite Hook-Up

- Carefree 14' Awning
- Wind Sensor
- Combination Carbon Monoxide & Propane Detector
- Automatic Lights in Exterior Compartment Doors
- 13.5 k Coleman Roof Mounted AC
- Wall Mount Thermostat with Built-in Temperature Sensor
- 30 k BTU Propane Ducted Furnace
- 12 V Wiring Supplied Through Engineered Wiring Harnesses
- Exterior TV – Optional
- 15 k Roof Mounted AC with Heat Pump – Optional

COCKPIT

- Dash Entertainment System
- Back-up Camera
- Power Cab Door Locks
- Power Cab Door Windows
- Power Mirrors with Defrost
- Cruise Control
- Tilt Telescoping Steering Wheel
- Chassis/House Battery Radio Power Switch
- Sun Visors
- 12 V Power Outlet
- Central Cab Locking with 2 IR Remotes
- Windshield Shades
- Swivel Seat Base for Both Driver & Passenger Seat
- Dash Entertainment System with GPS – Optional
- Premium Sliding Window & Windshield Shade – Optional

GENERAL INTERIOR

- Stereo System

- LED Lights
- Spyder® Multiplex Coach Control System
- Satellite System Compatible
- Privacy Shades
- Booster Seats
- Soft Vinyl Ceiling
- Vinyl Flooring Throughout
- Entrance Door Assist Handle
- USB Port
- Professionally Designed Interior Décor Packages
- Premium Fabric Suites – Teak or Windsong
- Amber Glazed Alder Cabinets – Optional
- Russet Cabinets – Optional

LIVING AREA

- Living Area TV
- Loft Bed over Cab
- Tinted Living Area Windows
- 52" Tri-fold Sofa Bed – Standard
- Entertainment System over Cab – Optional

KITCHEN

- 2-burner Cooktop with Tempered Glass Cover
- Convection Microwave
- 5 Cubic Foot Gas/Electric Refrigerator
- Single Bowl Sink

BEDROOM

- Twin Beds (32" x 76") Convert to King Bed (86" x 76")
- Two Wardrobes
- TV – Optional

FULL-BODY PAINT SCHEMES



BIRCHWOOD



COASTAL MIST



OBSIDIAN



Wayfarer

WAYFARER BY TIFFIN MOTORHOMES

625 FAWN GROVE ROAD | WINFIELD, AL 35594

PHONE 205-487-4710 | TIFFINMOTORHOMES.COM

Colton RV & Marine
3122 Niagara Falls Blvd
North Tonawanda, NY 14120
(716) 694-0188
www.ColtonRV.com

Colton RV
3443 Southwestern Blvd.
Orchard Park, NY 14127
(716) 957-3250
www.Coltonrv.com