

Colton RV & Marine  
3122 Niagara Falls Blvd.  
North Tonawanda, NY 14120  
(716) 694-0188  
www.ColtonRV.com

Colton RV  
3443 Southwestern Blvd.  
Orchard Park, NY 14127  
(716) 957-3250  
www.ColtonRV.com

Colton RV  
489 Bushkill Plaza LN #9665  
Wind Gap, PA 18091  
(610) 863-5239  
www.ColtonRV.com

# VOLANTE



**CROSSROADS**<sup>TM</sup>  
*Recreational Vehicles*

3851FL Back to Front



32FB Interior



32FB Bedroom



3851FL Living Area



32FB Interior

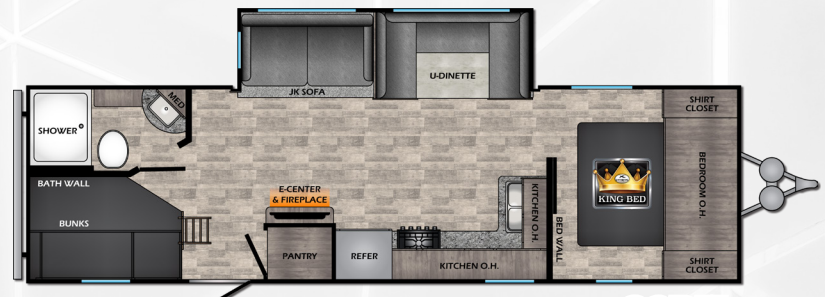
# CROSSROADS

*Recreational Vehicles*

## TRAVEL TRAILERS:



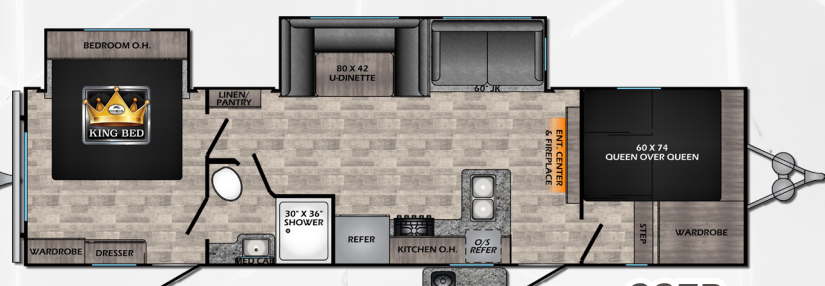
**25RL**



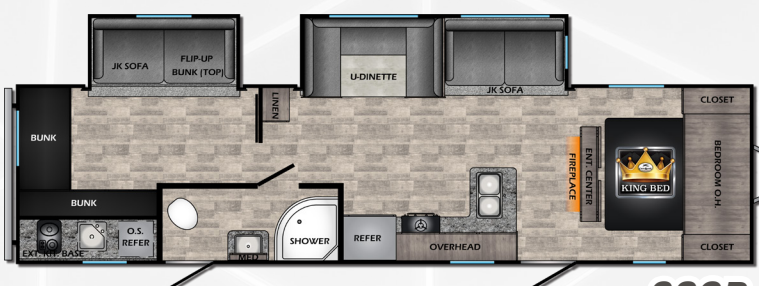
**28BH**



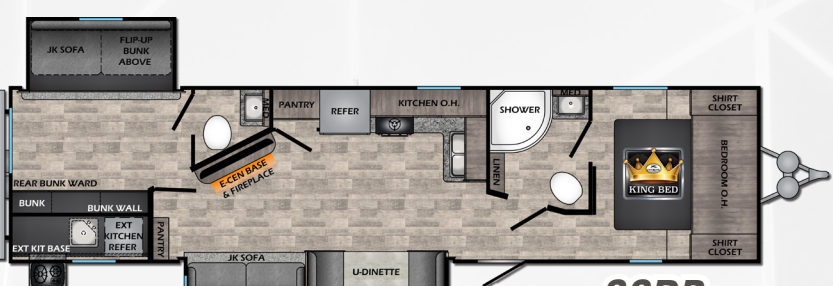
**29RB**



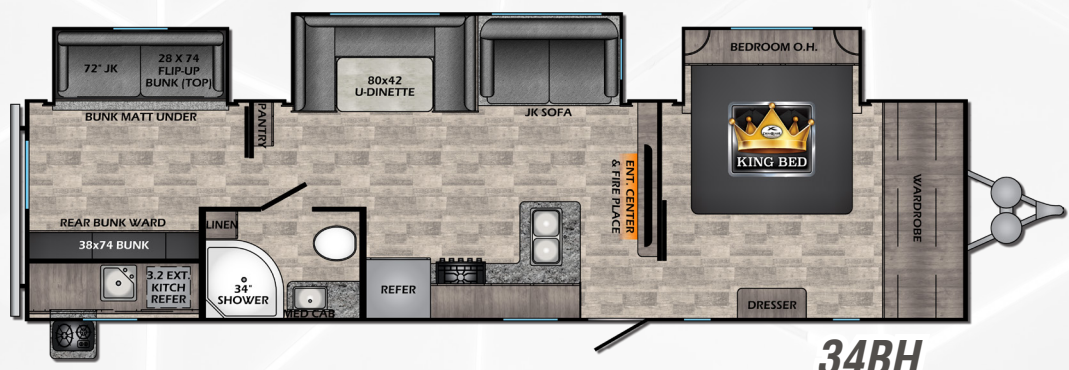
**32FB**



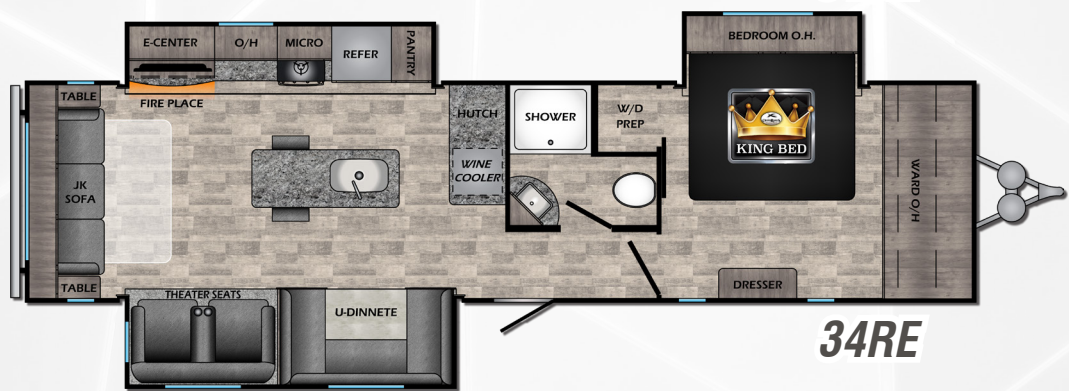
**32SB**



**33DB**

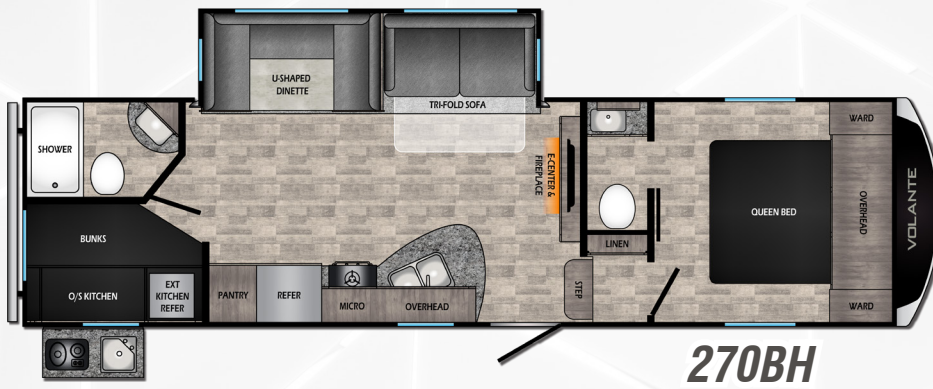
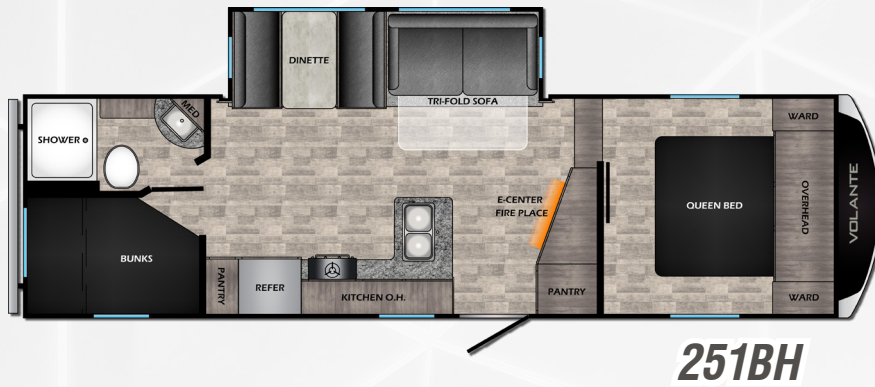
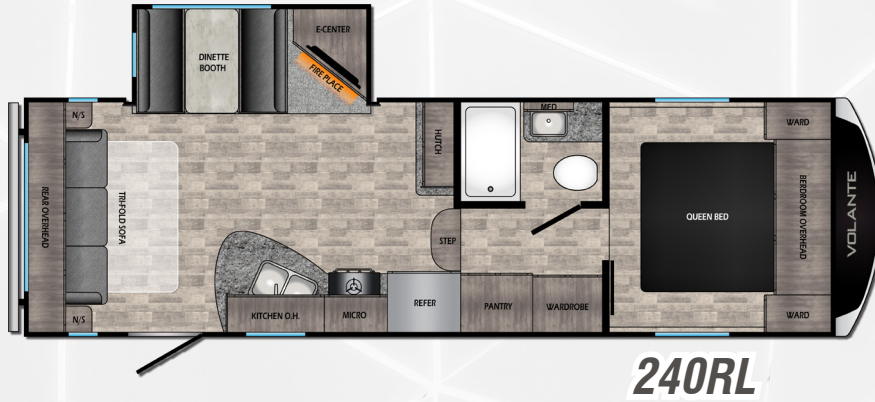


**34BH**

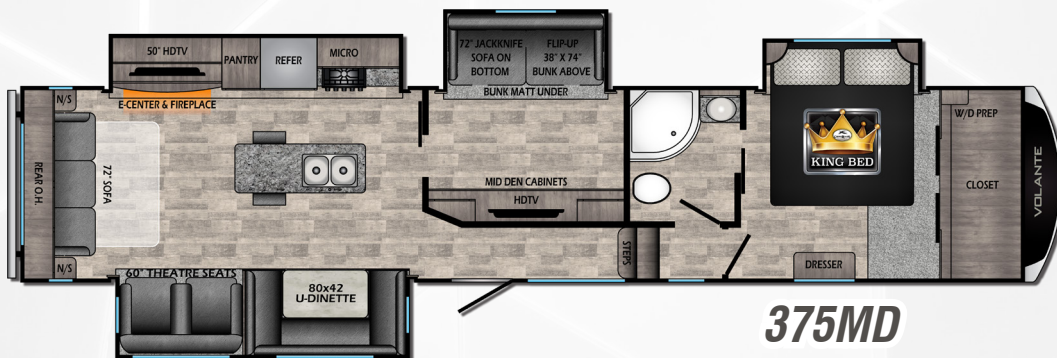
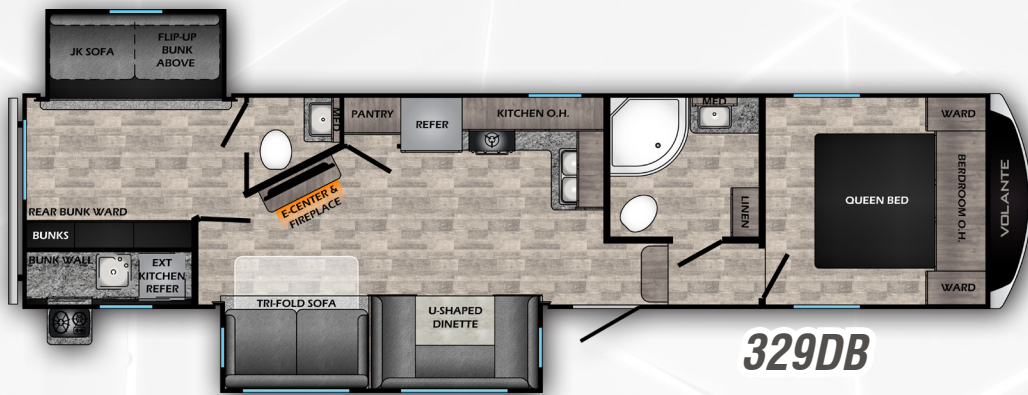
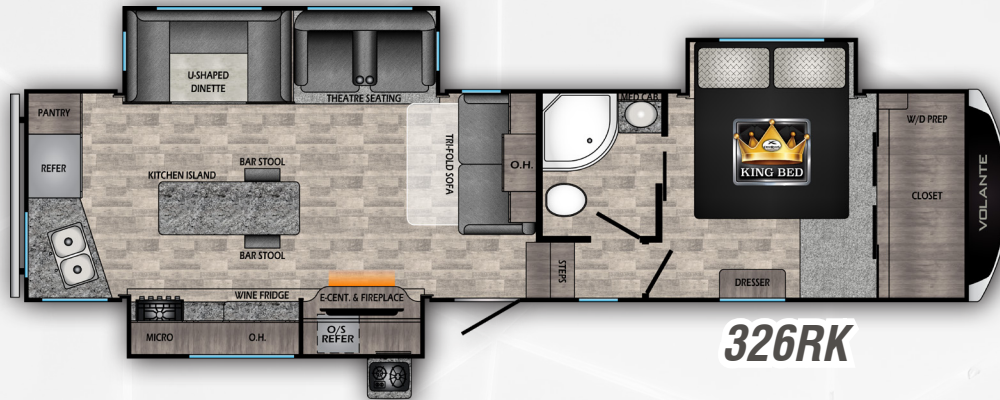
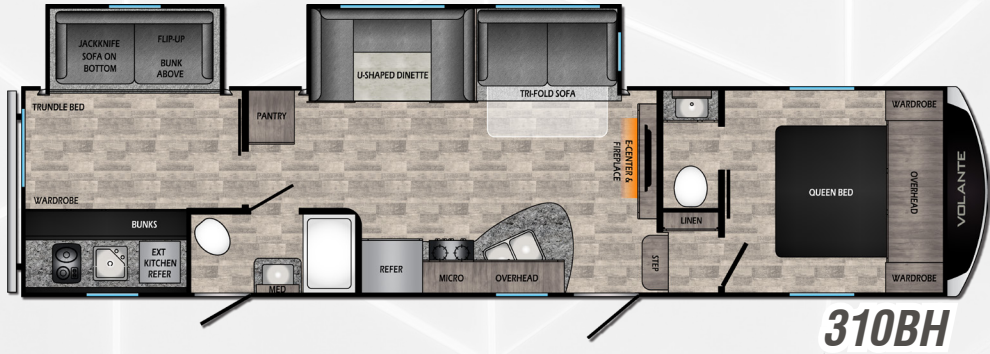


**34RE**

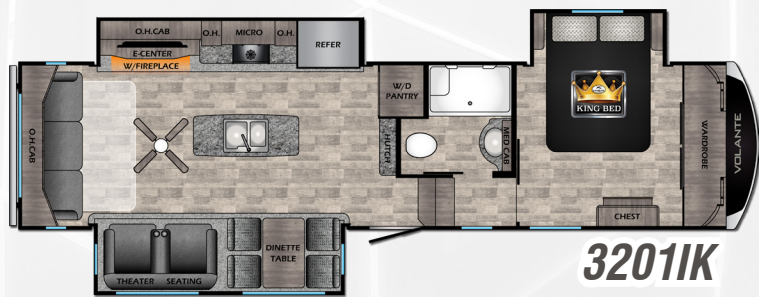
## 5<sup>TH</sup> WHEELS:



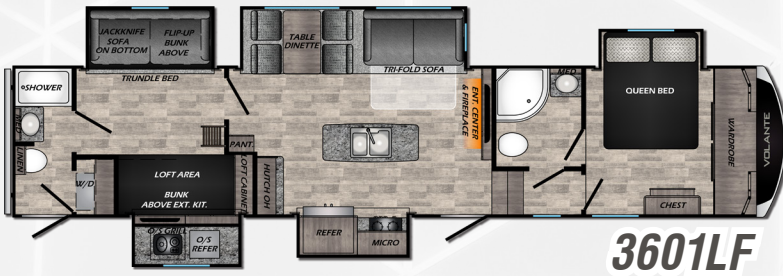
## 5<sup>TH</sup> WHEELS:



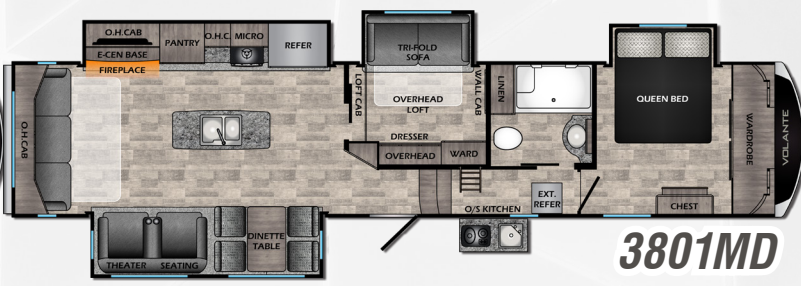
## HP 5<sup>TH</sup> WHEELS:



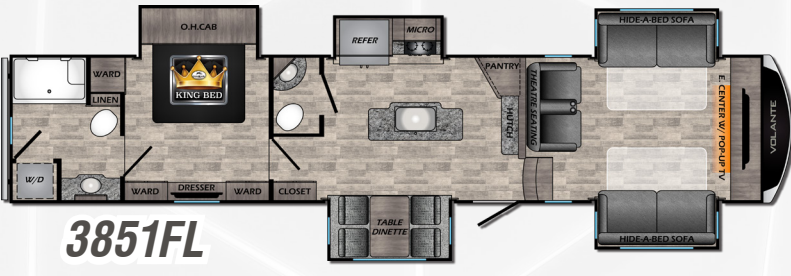
**3201K**



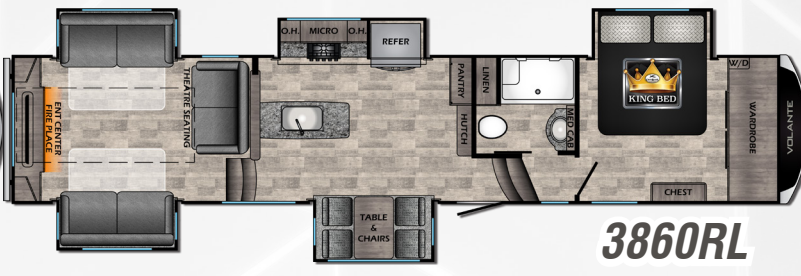
**3601LF**



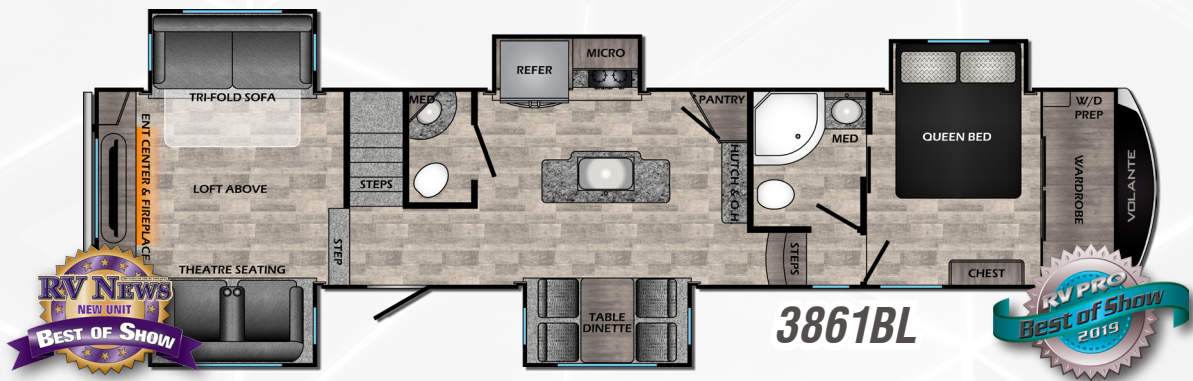
**3801MD**



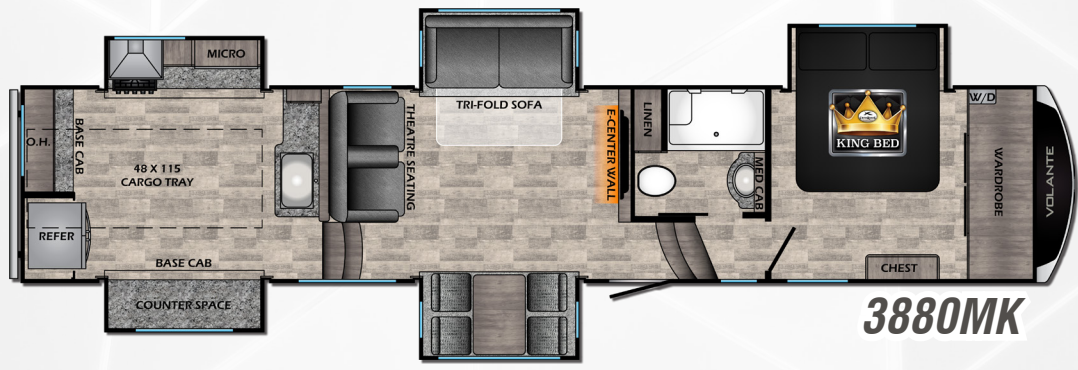
**3851FL**



**3860RL**



**3861BL**



**3880MK**

## SPECS & DECOR

### TRAVEL TRAILER

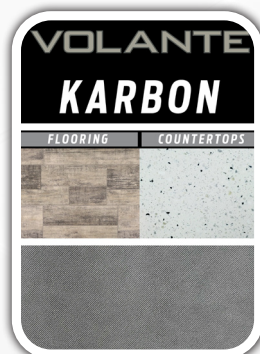
MODEL	25RL	28BH	29RB	32FB	32SB	33DB	34BH	34RE
DRY WEIGHT	5416	5864	5978	6924	7152	7394	7380	7718
GVWR	7580	7600	7600	9740	9630	9640	9650	9764
CARRYING CAPACITY	2164	1736	1622	2816	2478	2246	2270	2046
HITCH	546	644	798	946	838	848	854	964
LENGTH	29' 7"	32' 6"	33' 6"	36' 4"	36' 11"	38' 1"	38' 0"	38' 0"
EXT. HEIGHT + A/C	11' 1"	11' 1"	11' 1"	11' 4"	11' 4"	11' 4"	11' 4"	11' 4"
FRESH WATER	43 Gal	43 Gal	43 Gal	43 Gal	43 Gal	43 Gal	43 Gal	43 Gal
BLACK WATER	30 Gal	30 Gal	30 Gal	30 Gal	30 Gal	60 Gal	30 Gal	30 Gal
GRAY WATER	60 Gal	60 Gal	60 Gal	30 Gal	30 Gal	30 Gal	30 Gal	60 Gal

### 5<sup>TH</sup> WHEELS

MODEL	240RL	251BH	270BH	295BH	310BH	326RK	329DB	375MD
DRY WEIGHT	6977	7356	7838	8242	9234	9958	9646	11098
GVWR	9100	9400	9400	10270	11840	11870	11810	14000
CARRYING CAPACITY	2123	2044	1562	2028	2606	1912	2164	2902
HITCH	1240	1271	1476	1472	1644	1678	1618	2002
LENGTH	27' 10"	29' 9"	31' 5"	33' 8"	35' 11"	36' 5"	36' 9"	41' 8"
EXT. HEIGHT + A/C	12' 5"	12' 5"	12' 6"	12' 4"	12' 8"	12' 7"	12' 10"	12' 11"
FRESH WATER	51 Gal	51 Gal	51 Gal	51 Gal	51 Gal	51 Gal	51 Gal	51 Gal
BLACK WATER	39 Gal	39 Gal	78 Gal	39 Gal	78 Gal	39 Gal	78 Gal	39 Gal
GRAY WATER	39 Gal	39 Gal	39 Gal	78 Gal	39 Gal	78 Gal	39 Gal	78 Gal

### HP 5<sup>TH</sup> WHEELS

MODEL	3201IK	3601LF	3801MD	3851FL	3860RL	3861BL	3880MK
DRY WEIGHT	10637	12760	12436	12790	12966	13072	12874
GVWR	14010	14470	14245	15300	15300	15300	15300
CARRYING CAPACITY	3373	1710	1809	2510	2334	2228	2426
HITCH	2012	2470	2246	2566	2032	2036	2020
LENGTH	35' 10"	41' 0"	41' 2"	41' 11"	42' 6"	41' 11"	42' 6"
EXT. HEIGHT + A/C	13' 3"	13' 6"	13' 5"	13' 6"	13' 6"	13' 6"	13' 6"
FRESH WATER	60 Gal	60 Gal	60 Gal	60 Gal	60 Gal	60 Gal	60 Gal
BLACK WATER	44 Gal	82 Gal	44 Gal	76 Gal	44 Gal	83 Gal	44 Gal
GRAY WATER	44 Gal	82 Gal	83 Gal	76 Gal	82 Gal	44 Gal	82 Gal



# STANDARDS & OPTIONS

## STANDARDS

### LIVING ROOM

- Premium Residential Furniture
- Roller Blinds (FW Only)
- 81" Interior Height (Travel Trailer Only)
- LED Lights Throughout
- Accent Lights in Slide Out
- Wood Slide-out Fascia
- Tri-fold Hide-a-Bed Sofa (FW Only)
- Fireplace
- AM/FM/Bluetooth Soundbar
- Flush Floor Slide-out w/ Large Dinette Windows
- USB Outlets
- Storage Doors Below Booth Dinette
- Key TV & WiFi Prep
- Pleated Shades (TT Only)

### KITCHEN

- XL 50/50 Stainless Sink
- Super Booth Dinette (VBM)
- Range hood with Light and Exhaust Fan
- Wall Mounted Systems Monitor Panel
- Steel Ball Bearings and Drawer Guides
- Solid Surface Countertops (FW)
- Pressed Counter Tops (TT)
- 10 Ft<sup>3</sup> 12-Volt Refer

### BATHROOM

- Large Parchment Lavatory Bowl
- Foot Flush Porcelain Toilet
- Linen Storage (VBM)
- Mirrored Medicine Cabinet
- Glass Shower & Neo Angle Shower (VBM)
- Shower Curtain w/ Curved Track (VBM)

### BEDROOM

- 60" X 74" Mattress (VBM)
- 70" X 80" King Bed (VBM)
- TV Hook-up
- Coordinated Window Treatments
- Night Stands w/ Outlets on Each Side
- Bedspread
- USB Ports
- 110 Outlets

### EXTERIOR

- Tinted Safety Glass Windows
- Radial Tires - Nitro Filled
- Secure Stance Steps (Main Door Only)
- Bumper w/ Drain Hose Storage & End Caps
- LED Lit Exterior Speakers
- Molded Rain Gutters w/ 3" Drip Spouts
- Keyed-A-Like Baggage Doors
- Solar Prep
- Backup Camera Prep
- Outside Shower
- Water Heater Bypass Valve
- 26" Friction Hinge Entry Door (30" on FW)
- HD Digital TV Antenna

- Aluminum Wheels (FW Only)
- Black Tank Flush System
- Spare Tire & Carrier
- Power Awning w/ LED Accents
- Power Stabilizer Jacks
- Fiberglass Front Cap

### CONVENIENCE PACKAGE (STANDARD)

- 3-Burner Range with Oven
- TV Antenna
- Tub Surround
- Water Heater Bypass
- Smoke & LP Detector
- 13,500 BTU A/C
- Fully Enclosed & Forced Air Heated Underbelly
- Electric Awning with LED Lights
- Microwave
- Doors Under Booth Dinette
- Power Vent in Bath
- Large Assist Grab Handle
- 6 Gallon Gas/Electric DSI Water Heater
- Outside Shower
- Sink Cover
- Tri-fold Hide-A-Bed Sofa - (FW Only)
- Spare Tire and Carrier
- Black Tank Flush

### HP PACKAGE

(3201IK, 3601LF, 3801MD, 3851FL, 3860RL, 3880MK & VL3861BL)

- 4/6 Point Auto Leveling System
- Exterior Ladder
- Upgraded Insulation
- 2<sup>nd</sup> A/C Unit in Bedroom (13.5K)
- Aluminum Wheels
- Residential or Gas/Electric Refer
- 1,100 Watt Inverter
- 50 Amp Electrical Service w/ 2<sup>nd</sup> A/C Prep
- 15,000 BTU A/C
- Convenience Center
- Slam Latch Baggage Door
- 10 Gal Gas/Electric DSI Water Heater (HP)

### OPTIONS

- Free Standing Dinette with 4/ Chairs (VBM)
- 15,000 BTU A/C
- 50 Amp Service with 2nd A/C Prep (VBM)
- 2nd A/C in Bedroom (13.5K)
- Exterior Ladder
- Upgraded Insulation
- 50" TV (VBM)
- 39" TV (VBM)
- 12 Ft<sup>3</sup> Gas/Electric Refrigerator - (HP)
- 8 Ft<sup>3</sup> Gas/Electric Refrigerator

\*VBM: Varies By Model

[www.crossroadsrv.com](http://www.crossroadsrv.com) • 1140 W. Lake St Topeka, IN 46571 • (260) 593 - 3850

DISCLAIMER: Product information is as accurate as possible as of the date of publication of this brochure. All features, floor plans, and specifications in this brochure are subject to change without notice. Please also consult CrossRoads' web site at [www.crossroadsrv.com](http://www.crossroadsrv.com) for more current product information and specifications. Tow Vehicle Disclaimer. CAUTION: Owners of CrossRoads recreational vehicles are solely responsible for the selection and proper use of tow vehicles. All customers should consult with a motor vehicle manufacturer or their dealer concerning the purchase and use of suitable tow vehicles for CrossRoads products. CrossRoads disclaims any liability or damages suffered as a result of the selection, operation, use or misuse of a tow vehicle. CROSSROADS' LIMITED WARRANTY DOES NOT COVER DAMAGE TO THE RECREATIONAL VEHICLE OR THE TOW VEHICLE AS A RESULT OF THE SELECTION, OPERATION, USE OR MISUSE OF THE TOW VEHICLE. REFERENCE CROSSROADS RV COMPANY OWNERS MANUAL FOR LIMITED WARRANTY DETAILS. \*Length is defined as the distance from the centerline of hitch pin/coupler to rear bumper of trailer.