

20
NAVIGATOR®
06



HOLIDAY RAMBLER®

This is Living®





DESIGNED FOR THOSE WHO ARE COMFORTABLE IN THE LEAD.

Congratulations! You've just taken a huge step ahead of an entire industry. That's because you're looking at the most advanced motorcoach on the road today — the 2006 Navigator. This marvel of engineering comes standard with 500 horsepower (with optional upgrades of 515 HP and 525 HP) and the astounding performance of a custom-built Roadmaster Semi-Monocoque chassis. It also features the world's most sophisticated safety systems, including automatic traction control, ABS with front disc brakes and the optional SEE-Vision coach monitoring and Eaton® VORAD® collision avoidance systems.



WE'VE GOT LUXURY DOWN TO A SCIENCE.

What's the most luxurious feature imaginable? More space — and the Navigator has it, thanks to its 6'10" interior height and roomy, innovative floorplans. The exquisite styling is highlighted by a beautiful new recessed ceiling design, new decorative hardwood slide-out fascia and the stunning optional sculptured carpeting. Another exciting new feature is optional power window blinds in the living area — for instant privacy at the touch of a button. Yes, you've just discovered the ultimate in luxury living.

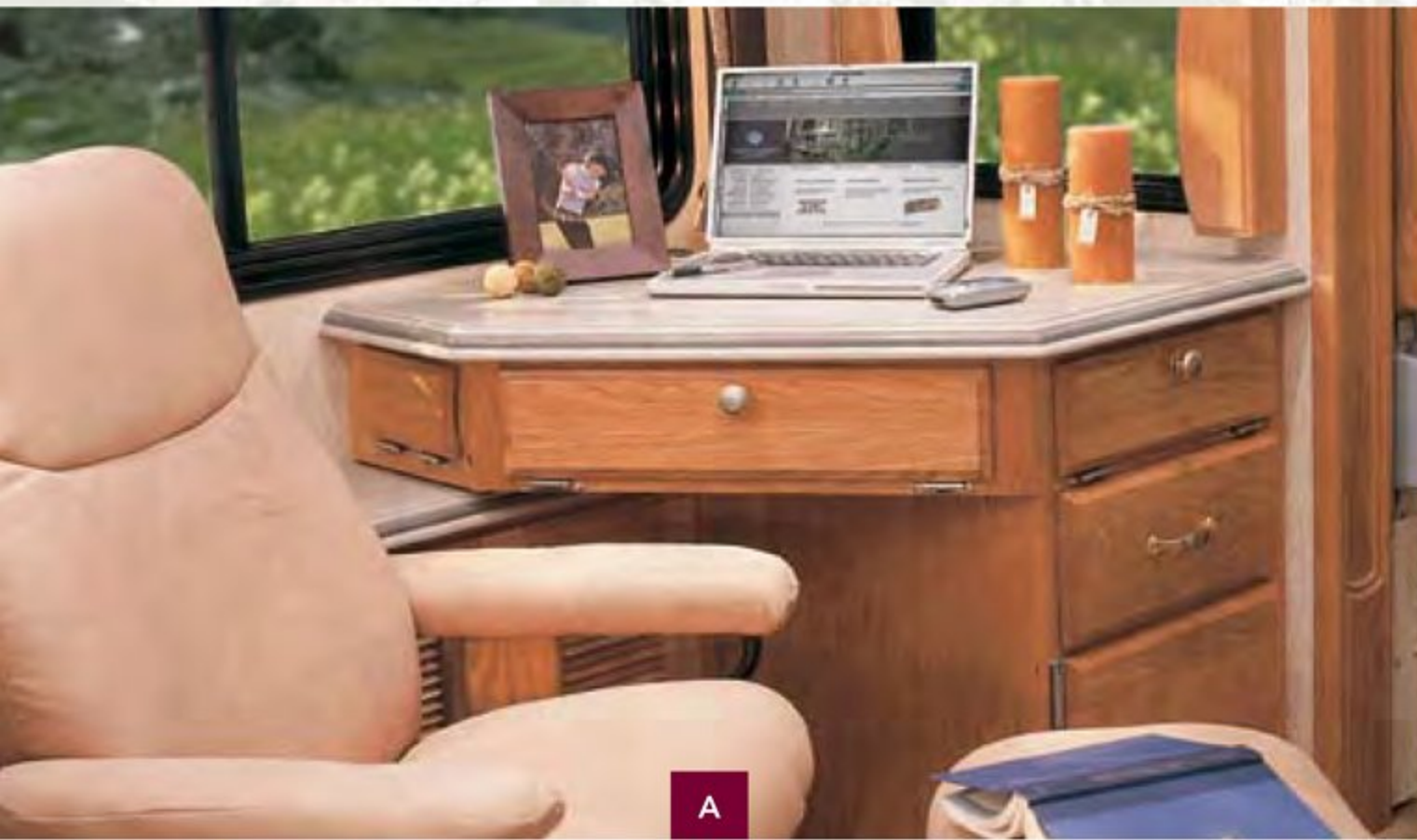


A

A) The one-of-a-kind recessed ceiling design adds elegance to the living area. Halogen lights, rope lighting and mirrored panels combine to accent the spaciousness of the 6'10" ceiling height and reflect the warmth and beauty of the woodwork and furnishings.

WHERE A HIGHER STANDARD OF LIVING COMES STANDARD.

The tour of the Navigator's living area continues with a closer look at some remarkable details. The plush furnishings include your choice of fabric or optional leather sofas, and, on select floorplans, the cozy Euro-recliner with ottoman. In the cockpit, you'll find the exquisite comfort of six-way power seats with electric lumbar adjustment. The pilot's seat features an electric sliding seat cushion and memory capabilities, while the co-pilot's has a power footrest and offers an extra-wide seat option.



- A) The stylish Euro-recliner with ottoman is paired with this optional wraparound computer desk. Ideal for your laptop, this is an excellent workspace with roomy storage drawers for supplies, accessories and paperwork.
- B) The elegant dinette area seats four with two beautifully upholstered freestanding chairs and two additional folding chairs. Nothing beats the convenience of our legless table design, and a side-slide adjustment adds to the comfort. The stylish Corian® top is durable and easy to care for.
- C) The home theater system is conveniently housed in this overhead cabinet and features a DVD/VCR/CD player. A 32" LCD TV comes standard, or you may choose the optional 37" LCD TV that's mounted in the ceiling. Add to that an optional digital satellite system, and you have the most advanced entertainment center on the road today.

- Many exterior features combine to enhance your safety on the road. The triple head power heated mirrors feature turn indicator lights and are mounted on the front cap so you don't have to turn your head. You'll also appreciate the halogen fog lights, daytime running lights and recessed side docking lights.
- The Navigator features side-hinged baggage doors with conveniently located handles that make it easier to pack and unpack the storage bays. Electric locks also enhance the convenience and security of the coach's storage compartments.



TRUE CHARACTER IS IN THE DETAILS.

Throughout the coach, you'll enjoy the craftsmanship of the cabinetry, with solid wood raised panel doors, lined shelves, taller overhead cabinet doors and top-of-the-line hardware. A highlight of the galley is the Corian® countertop with newly styled edge detail. Combine it with an integrated sink and Corian® backsplash, and you have a uniquely beautiful, easy-to-clean kitchen area. Also located in the galley are recessed surround sound speakers in the ceiling — giving luxurious sound quality to your favorite music and movies.



A



B

C

- A) Select floorplans feature this spacesaving roll-out pantry in the base cabinet. It houses roomy shelves and built-in storage for the countertop covers and has a cutting-board top.
- B) A residential refrigerator is a fabulous option that truly gives you more of the conveniences of home. (Requires the four additional batteries option. Not available on 43PRT.)
- C) These stylish fixtures offer impressive convenience, including a pullout sprayer, a separate faucet for filtered water and a soap dispenser.





EVERY SQUARE INCH IS A MARVEL OF DESIGN.

Welcome to a place where luxury is measured in increased storage space and breathing room. The Navigator's private quarters take efficiency to new heights, with every nook and cranny made more useful. Its built-in conveniences include a large bedroom dresser, an oversized rear wardrobe closet, nightstands with Corian® tops, overhead cabinets and even a clothing hamper to help you keep things tidy. The bedroom also features a fully equipped entertainment center with a 20" flatscreen TV, a combination DVD/VCR player, a stereo CD player/clock radio and a second receiver with the optional digital satellite system.



A) The luxury extends to the bathroom where you'll find a Corian® shower with tile accent and shower caddy. And for your convenience, a bathtub is optional on select floorplans. Above the vanity, you'll find a large medicine cabinet with plenty of secure storage for all your essentials, as well as mirrored doors and decorative cosmetic lights.

B) The vanity features a Corian® top with integrated sink, for the ultimate in style and carefree convenience. More storage is located under the sink, and to the right you'll see the bathroom location for the multiplex switches.

C) Select floorplans feature this roomy bedroom closet with impressive space for clothes or linens.

THE ULTIMATE POWER TRIP.

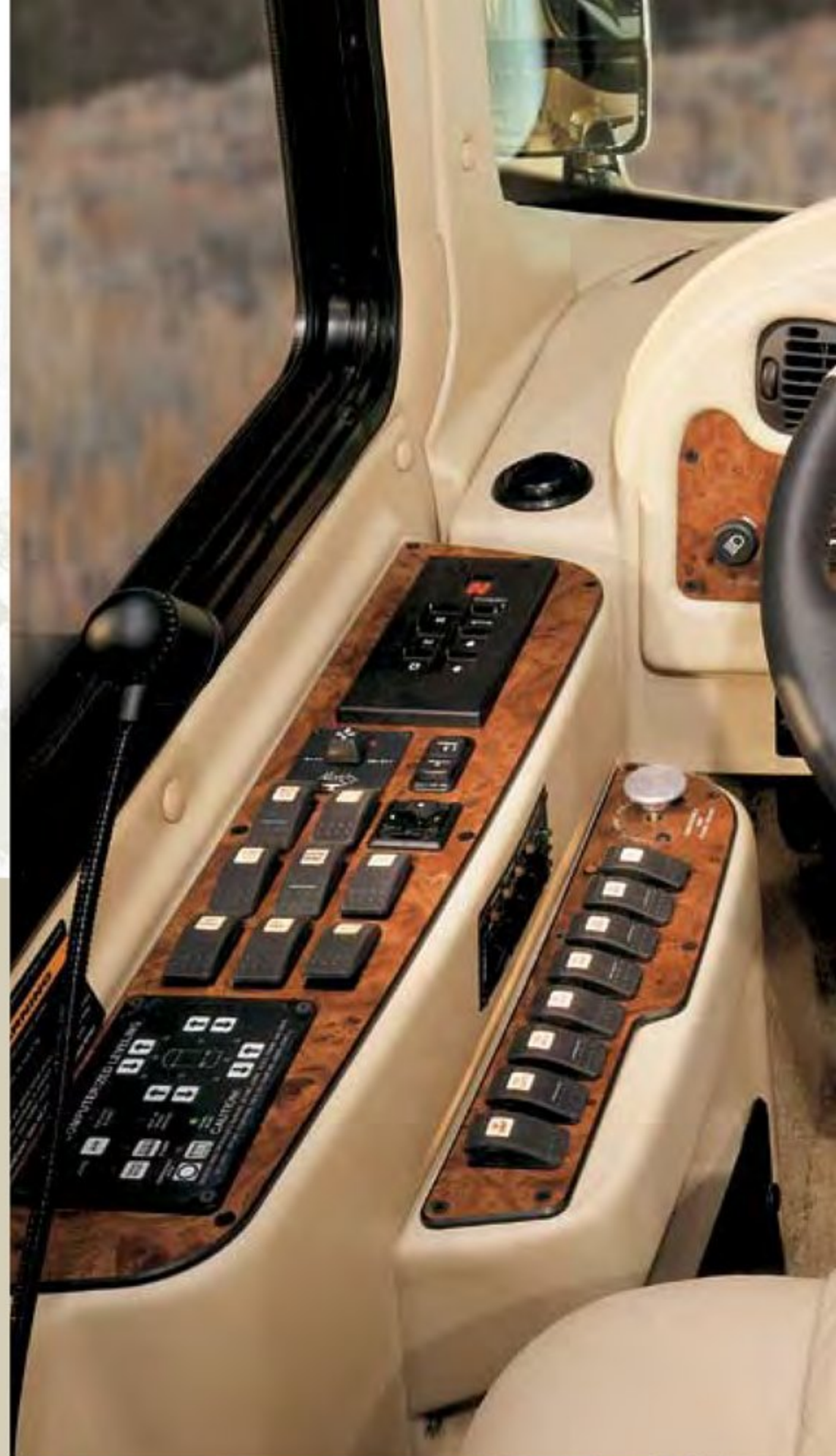
This is one of the most awe-inspiring views you'll find anywhere — the cockpit of the 2006 Navigator. Designed for a truly superior driving experience, it houses the controls for the industry's most complete array of state-of-the-art features. You'll love the vermilion burl instrumentation panel as well as the VIP Smartwheel® with easy-to-reach switches. To the right is the color monitor for the rear vision system with audio, the Aladdin™ video coach monitoring system with integrated compass and temperature gauge and the optional GPS system. Also shown here is an optional CB radio for added versatility. Plus, to enhance your comfort and safety, the brake and accelerator pedals adjust to the optimum position for each driver.



1-PIECE WINDSHIELD

Amber Sunset | 43PBQ ▾

The 2006 Navigator sports a sleek new front cap designed in collaboration with a renowned German automotive design team. This contemporary styling also provides greater safety, thanks to the exclusive Panaview™ windshield — the largest one-piece windshield you'll find anywhere. In addition to its larger, wraparound view, it features out-of-the-way wipers mounted on the front cap and more slender side pillars.



A) The co-pilot's side has more versatility than ever before, thanks to this recessed dash slide-out workstation. It's just another way the Navigator makes every inch of space more useful.



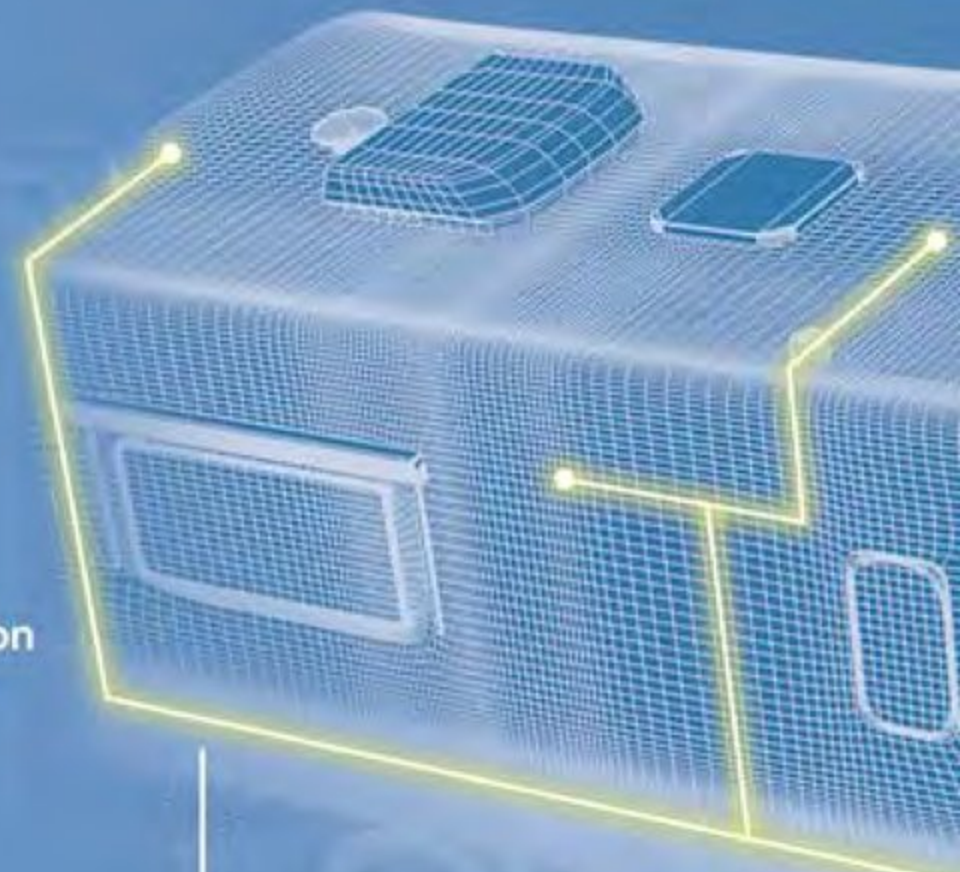
BETTER THINKING FOR A BETTER EXPERIENCE.

At Holiday Rambler, we've pioneered the design of motorhome entryways. Our exclusive front door is simply far superior to any in the industry. It all begins with a steel frame for greater strength and durability. Next, we've given it a three-pin locking system, compared to the single pin of other manufacturers, providing greater security and reliability. The Navigator also features a keyless entry system with pocket remote control, as well as a lighted exterior grab handle.

For a better experience inside the cockpit, a pressurized air bladder, similar to those found on commercial aircraft, seals the door and dramatically reduces road noise and excess vibration. The top screen is removable, providing a clearer view through the door's window and further reducing noise and vibration.

AN IDEA SO SIMPLE, IT'S AHEAD OF ITS TIME.

Holiday Rambler is proud to be among the first to offer sophisticated Multiplex wiring. This state-of-the-art system utilizes computer technology to streamline the wiring and connect many of the coach's electronic features. This illustration explains how it works, but all you really need to know is that you're going to love the convenience.



INTELL-I-SWITCH
Innovating Convenience.

A) The optional Aqua-Hot® system replaces the furnace and water heater. It gives you a continuous, unlimited supply of hot water on demand and provides cozy radiant heat with a zoned interior hot water heating system. It also includes an engine preheat function.

B) The impressive Onan® 10 kW QD diesel generator is conveniently located on a power slide-out tray. It features an auxiliary start switch and automatic temperature start — to maintain a comfortable temperature inside the coach, even while you're away.

C) The optional RV Sani-Con tank drainage system makes hook-ups a snap and helps you keep the service bay tidy.

D) The tidy, well-organized Super Service Center gives you more convenient access to the hook-up functions and features a faucet with hot and cold water and paper towel and soap dispensers.

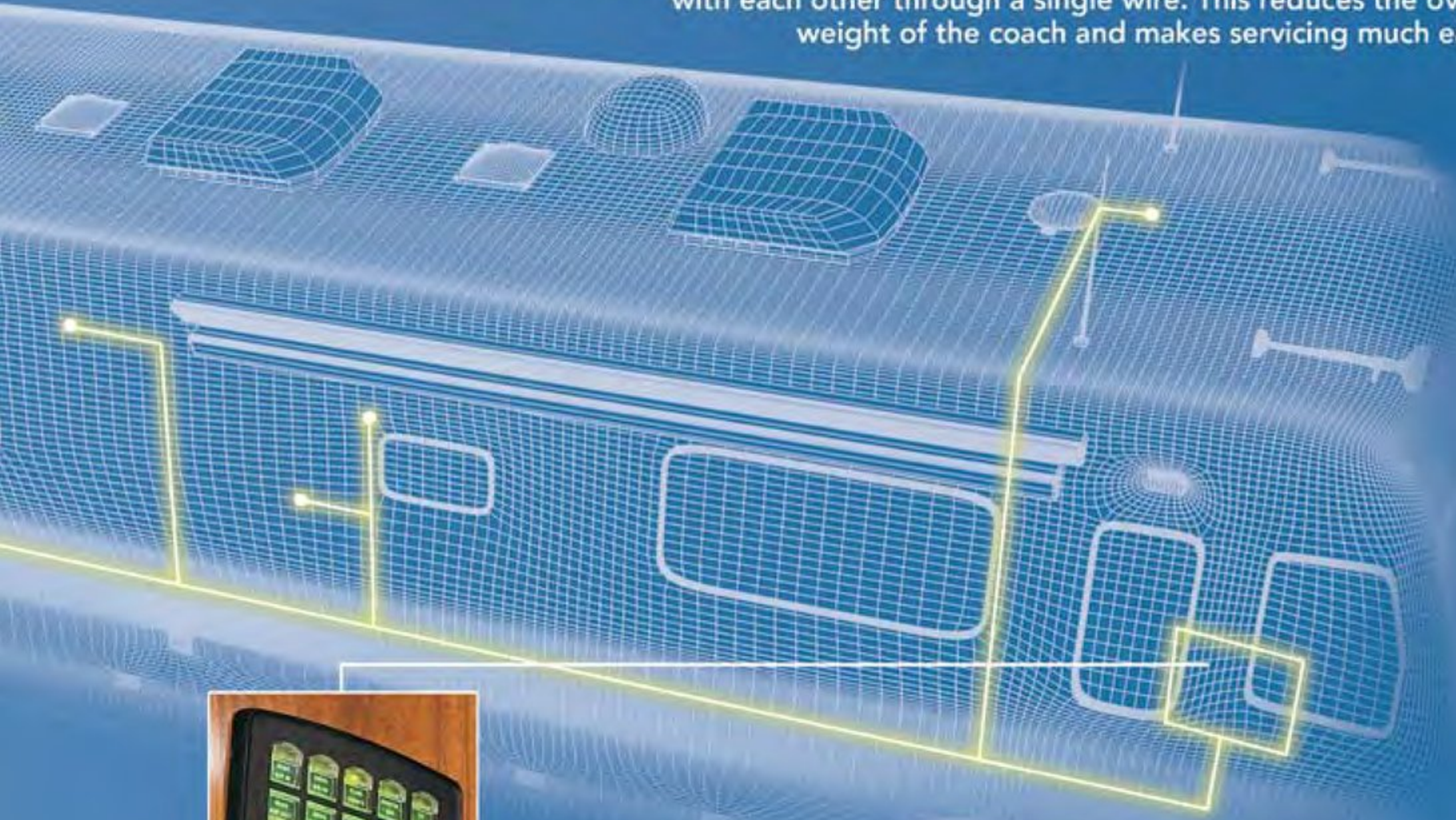


A B



C D

Bundles of wiring are replaced by separate modules that communicate with each other through a single wire. This reduces the overall weight of the coach and makes servicing much easier.



Lighted switch panels, like the one shown here, are located throughout the coach, giving you multiple convenient access points for the controls to the slide-outs, lighting and more. Each switch illuminates to indicate which function is on or off.



E

E) Say goodbye to stretching and straining to reach your gear in the baggage compartments. Optional slide-out trays are available for both the one-side and pass-through storage bays, and you even have the luxury of optional electric slide-out trays for the pass-through compartments.



- The Navigator comes standard with a full package of awnings for the slide-out houses, patio and selected windows. Plus, you have the option of upgrading to automatic patio and/or front door awnings.

DOUBLE YOUR CHOICES.

Holiday Rambler has long set the standard with warm, inviting interiors that feature a perfect harmony of fabrics and carpeting. And now, you have your choice of two exterior color schemes that go with each interior decor. Add to that your choice of six styles of woodwork, and you have more ways to customize your Navigator and make it distinctively your own.

- A. BEDSPREAD
- B. SOFA
- C. CORIAN®
- D. ACCENT
- E. CARPET



EXTERIOR COLORS/WOODS/FABRICS



DELUXE



CLASSIC



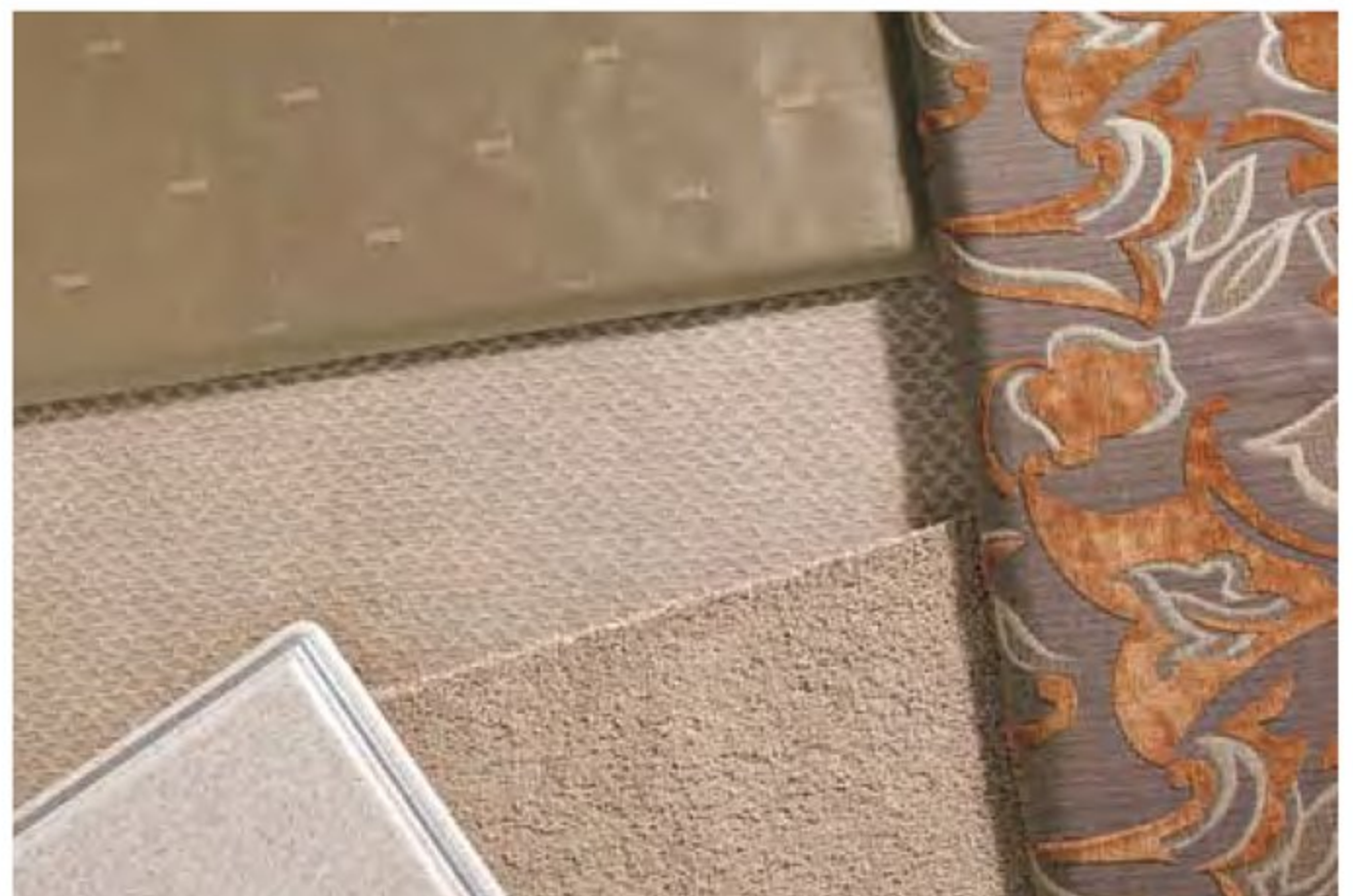
FLORENTINE RED



DELUXE



CLASSIC



AMBER SUNSET



NAVIGATOR HARDWARE

Our elegant cabinet hardware design features a pearl nickel/polished brass finish.



BETTER
STAIN
PROTECTION

Manufactured in, not added on. For added protection against stains, soil repellent is applied to virtually all upholstery fabric during the finishing process for superior coverage.*

*Brand and application of upholstery fabric protection may vary depending on date recreational vehicle was manufactured.



NATURAL OAK



STAINED OAK



NATURAL MAPLE



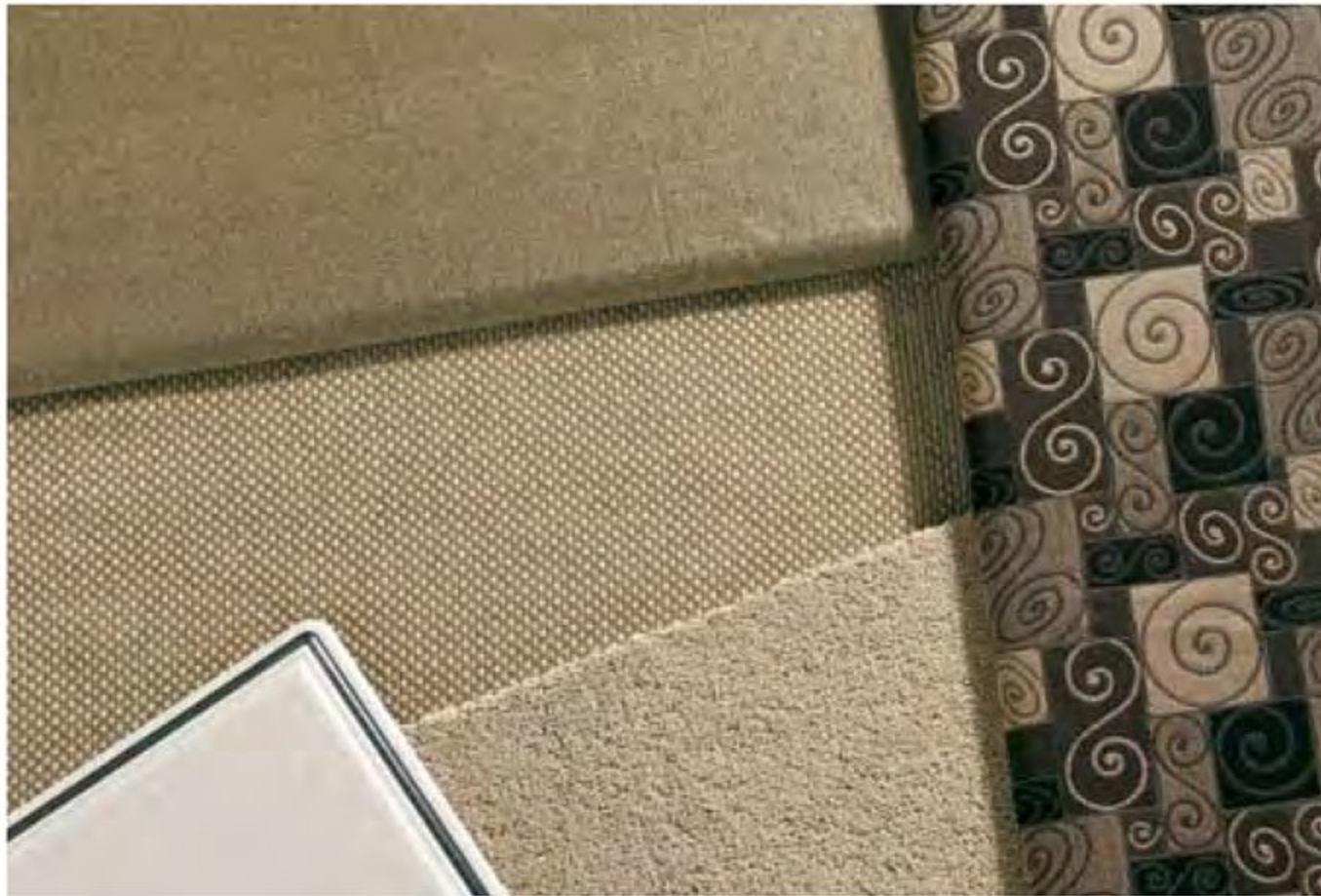
NATURAL CHERRY



STAINED CHERRY



MAHOGANY STAINED CHERRY



NAPA ONYX II



DELUXE



CLASSIC

EXTERIOR COLORS/WOODS/FABRICS



ALABASTER CLAY



DELUXE



CLASSIC

ROADMASTER S-SERIES CHASSIS

At the heart of the Navigator is the incomparable Roadmaster S-Series Semi-Monocoque chassis. Designed exclusively for luxury motorcoaches and custom-built to the exact specifications of each floorplan, this chassis delivers the very best performance in the industry. We invite you to take a few minutes and discover all the ways it leads the pack in safety, reliability, comfort and convenience.



The three-point engine mounting system lowers the coach's center of gravity and reduces the amount of vibration that reaches the coach. The mounting also makes the engine easier to service by allowing the engine to be easily lowered through the bottom of the coach.

10,000 lb. hitch receiver offers powerful towing capacity.

Allison® 4000 MH 6-speed transmission for smooth shifting; our exclusive use of synthetic transmission fluid allows for up to three-year maintenance intervals.

Cushion Air Glide suspension system positions ten Bilstein® shocks and ten air bags, eight of which are outboard mounted with auto-leveling for greater stability, a smoother ride and the best handling in its class.

Unique three-degree rear axle tilt perfectly aligns the engine, transmission and differential, minimizing stress on the drive-train and reducing noise in the coach.

Automatic Traction Control (ATC) eliminates wheel slippage in slick conditions and heightens control.

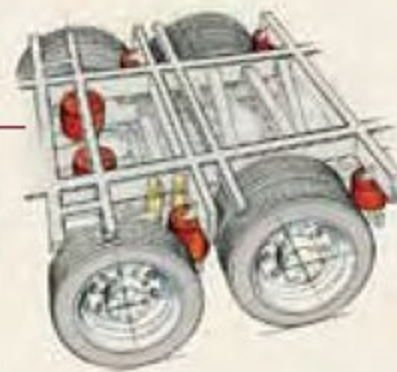
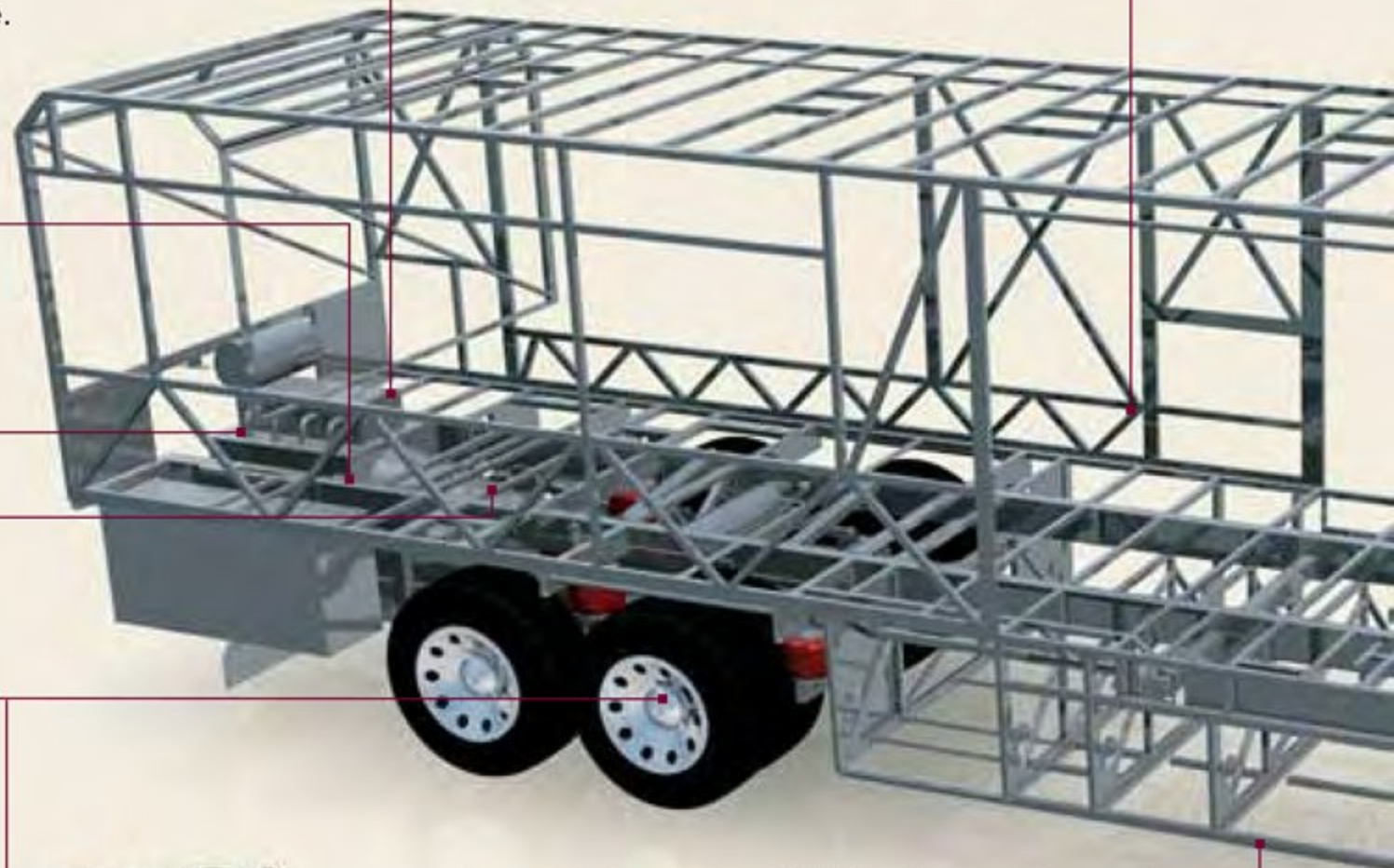
Tag axle lifts for added maneuverability in tight spots.



Cummins® ISM-II 500 HP engine provides 1,450 lbs./ft. of torque.

Optional Cummins® ISX-525 HP engine adds power and increases torque to 1,650 lbs./ft.

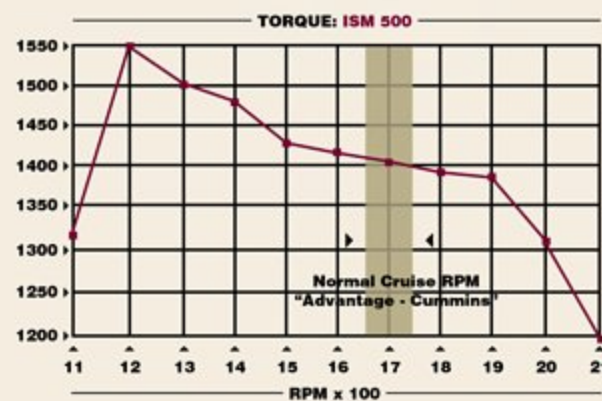
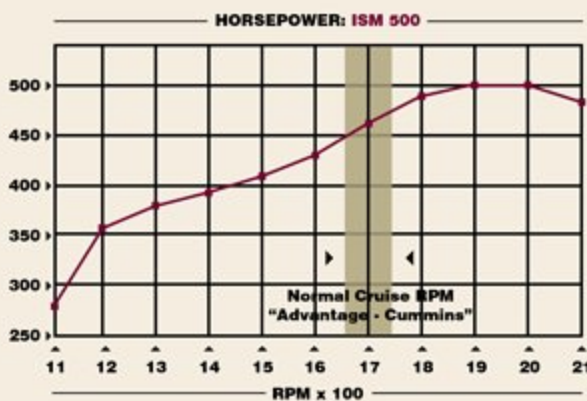
Optional Series 60 Detroit Diesel 515 HP engine offers superior climbing power with less weight and reduced vibration.



Basement structure rust inhibitor: To prevent corrosion, the basement storage area is constructed with pre-primed steel with rust inhibiting paint.

Dual fuel fill allows you to fill the tank from either side of the coach, for greater convenience and flexibility at the pump.

CHASSIS AND CONSTRUCTION



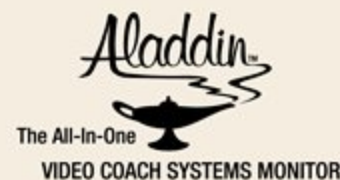
The Navigator's standard Cummins® ISM-II 500 HP engine delivers more torque and horsepower when you need it most — for the mountain pass or the passing lane.

SIDEWALL CONSTRUCTION: (left to right)

- Gel coat fiberglass outer wall
- Luaun paneling
- R 7.5 closed cel foam seals every nook and crevice
- Heavy-gauge tubular steel and steel plate backers for cabinet attachment
- Luaun paneling; walls are Vac-U-Bonded together
- Decorative vinyl wall coverings



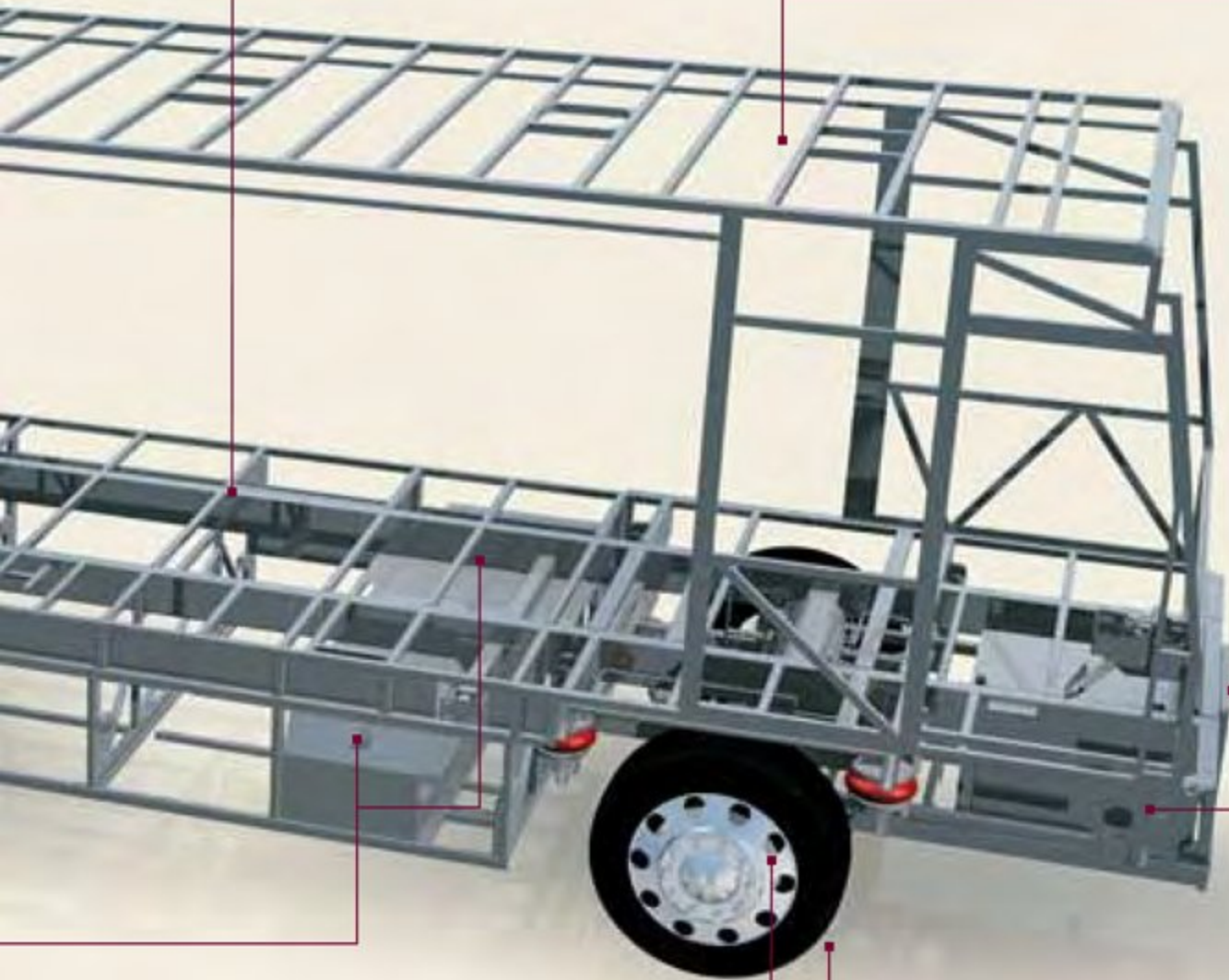
With the GPS option, you're free to explore the middle of nowhere and always know exactly where you are.



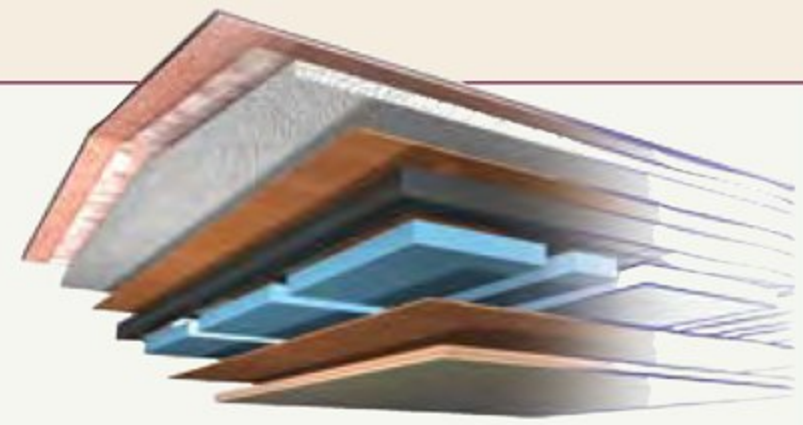
Aladdin™ makes it easy to keep track of many important functions, including tank levels, temperatures, mileage and much more.

The semi-monocoque design, with trussed superstructure, distributes stress evenly throughout the entire chassis and adds strength to sidewalls and bays.

Full-length frame rails fabricated from 3" by 8" by 1/4" 60,000 PSI structural steel; rails are spaced 44" on center for a wider stance and unmatched strength.



Two-stage Jake brake system assures you of safely traveling steep grades while 6-wheel anti-lock brakes with disc brakes in front help you maintain control in severe road conditions.



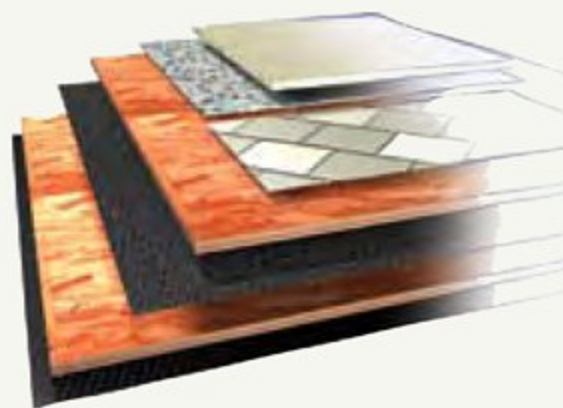
ROOF CONSTRUCTION: (top to bottom)

- One-piece 1/4" thick fiberglass roof, crowned for water runoff and seamlessly joined with front and rear end caps; non-skid walkways on outboard areas for added convenience
- Vapor barrier
- Tapered bead foam supports the crowned roof; the center tunnel houses wiring and air conditioner ducts
- Marine grade plywood sheeting
- Tubular steel framework
- Foam insulation
- Luaun and vinyl paneling are Vac-U-Bonded
- Sound-absorbing, easy-to-clean padded vinyl interior headliner

All chassis are equipped with steel cage construction and steel firewall for added safety.

The power steering box allows for a 50-degree front wheel turn angle in both directions for better maneuverability and returns the steering wheel back to its center position to eliminate driver fatigue.

P295/80R/22.5 Goodyear steel belted all-season tires ensure a safe and quiet ride.



FLOOR CONSTRUCTION: (top to bottom)

- Plywood and tile, or carpet pad and carpeting
- Oriented Strand Board (OSB)
- Decibel paper
- Oriented Strand Board (OSB)
- Waterproof Darco underbelly



The optional SEE-Vision system reduces blind spots when you're driving and provides added security when you're parked.



This optional collision avoidance system utilizes a combination of sensors, software and radar to warn you of potential hazards in the road ahead.

| BODY CONSTRUCTION: FEATURES | | OPTIONS |
|--|---|---|
| <ul style="list-style-type: none"> • Heavy-Duty Steel Superstructure with Steel Cage Cockpit Construction • Seamless One-Piece Molded Crowned Fiberglass Roof • All-Season Foam Insulated Roof • Laminated Gel Coat Fiberglass Sidewalls • Five-Layer Flooring with Two Layers of Oriented Strand Board (OSB) Flooring • Deluxe Full-Body Paint • One-Piece Front Windshield • Triple Head Power Controlled Heated Chrome Exterior Mirrors with Turn Indicator Lights • Halogen Fog Lamps • Daytime Running Lights | <ul style="list-style-type: none"> • Recessed Side Docking Lights • Roof-Mounted Dual Trumpet Air Horns • Entry Step Storage • Insulated Aluminum Baggage Doors with Power Locks • Lined Pass-Through Storage Compartments • Interior Paneling with 1-1/2" Insulation • Interlocking Aluminum Framed Slide-Out Houses • Side-Hinged Baggage Doors with Electric Locks • Rear Ladder • Holiday Rambler Full-Length Mud Flap with Polished Stainless Steel Logo • Electric Bay Door Latches | <ul style="list-style-type: none"> • Classic Full-Body Paint • 3M Film Front Mask • Slide-Out Storage Tray (One Side) • Slide-Out Storage Trays (Complete Pass-Through) • Electric Slide-Out Storage Trays (Complete Pass-Through) • Exterior Sunscreens |
| CHASSIS/ENGINE/SUSPENSION: FEATURES | | OPTIONS |
| <ul style="list-style-type: none"> • Roadmaster S-Series Semi-Monocoque Chassis • Cummins® ISM-II 500 HP Electronic Engine with Allison® 4000 MH 6-Speed World Transmission and Electronic Shifter • Torque: 1,450 lbs./ft. Max • Engine Displacement: 661"/10.8L • Dual Fuel Fill • 200 Amp Alternator • Rear Axle Ratio: 4.33:1 • Tires: Goodyear 295/80R/22.5 • Polished Aluminum Wheels • Full-Cushion Air Glide Suspension with Ten Air Bags (Eight Outboard-Mounted) and Ten Bilstein® Shock Absorbers | <ul style="list-style-type: none"> • Air Suspension with Two Ping Tanks • Automatic Traction Control • Anti-Lock Braking System with Front Disc Brakes and Rear Drum Brakes • Tag Axle with Anti-Lock Braking System • Auto Slack Adjusters on Brakes • Two-Stage Jacobs Engine Brake • Pre-Wire for Supplemental Braking System • Engine Block Heater with Switch on Dash • Automatic Air Leveling System • Undercoating • 10,000 Lb. Hitch Receiver and 7/4-Way Trailer Plug • Remote Inflation Connector | <ul style="list-style-type: none"> • Series 60 Detroit Diesel 515 HP Engine with Allison® 4000 MH 6-Speed World Transmission and Electronic Shifter; Torque: 1,650 lbs./ft.; 858" Engine Displacement • Cummins® ISX-525 HP Engine with Allison® 4000 MH 6-Speed World Transmission and Electronic Shifter; Torque: 1,650 lbs./ft.; 912 Cu. In. Engine Displacement • Hydraulic Leveling System • Dual Leveling Systems (Air/Hydraulic) |
| COCKPIT: FEATURES | | OPTIONS |
| <ul style="list-style-type: none"> • Fiberglass Automotive Dash with Vermillion Burl Instrumentation Panel; Black Gauges with White Lettering and Chrome Bezels • In-Dash AM/FM Stereo with Multi-Disc CD Changer • Color Rear Vision System with Audio • Aladdin™ Video Coach System with Integrated Compass and Temperature Gauge • CB Radio Prep (Cable Only) • Recessed Slide-Out Dash Workstation • Manual Privacy Drape • Power Front Sunvisors • Pilot and Co-Pilot Side Window Manual Sunscreens | <ul style="list-style-type: none"> • Adjustable Brake and Accelerator Pedals • Lighted VIP Smartwheel® with Controls for Windshield Wipers, ICC and Cruise Control • Audible Turn Signals • Cruise Control Light on Dash • 6-Way Power Pilot and Co-Pilot Seats with Electric Lumbar; Electric Sliding Seat Cushion and Memory Capabilities on Pilot Seat; Power Footrest on Co-Pilot Seat • 12V and 110V Outlet at Dash • Digital/Analog Cellular Antenna • Carpet, Driver and Passenger Floor Mats | <ul style="list-style-type: none"> • Extra Wide Co-Pilot Seat with Power Footrest (Deletes Roadside Slide-Out Fascia Cabinet) • Electric Privacy Drape • CB Radio with Antenna • GPS Navigation System • XM Satellite Stereo (Requires Subscription) • Sirius Satellite Radio System (Requires Subscription) • SEE-Vision Coach Monitoring System |

WE'VE GOT YOUR BACK.

- Live customer support 24/7/365
- 350 Nationwide Service Centers
- Free first-year enrollment in our Owner Advantage Roadside Assistance Program
- Call 1-800-634-0855 or 1-800-650-7337 to arrange a tour of one of our state-of-the-art production facilities in Indiana or Oregon.



| APPLIANCES AND ACCESSORIES: FEATURES | | OPTIONS |
|--|--|--|
| <ul style="list-style-type: none"> • Four-Door Refrigerator with Ice Maker and Raised Panel Doors • Recessed High-Output 2-Burner Cooktop with Flush Mount Covers • Spacesaver Convection Microwave with Touch Control • Manual TV Antenna with "Antenna Up" Light on Dash • Prep for Satellite Receiver (Living Area and Bedroom) • 32" LCD Cabinet Mounted in Front of Co-Pilot Seat | <ul style="list-style-type: none"> • 32" LCD Mounted in Entertainment Center behind Dinette Area (43PRT) • 20" Flatscreen TV in Bedroom • Bedroom Stereo/CD/Clock Radio • Home Theater System with DVD/VCR/CD Player • Bedroom DVD/VCR Combo • Universal Remote System | <ul style="list-style-type: none"> • Residential Refrigerator with 4 Additional Batteries (N/A: 43PRT) • Combination Washer/Dryer • Stackable Washer/Dryer (43PRT, 45PBQ) • 20" LCD TV in Bedroom • 37" LCD TV Mounted in Living Area Ceiling • In-Motion Digital Satellite System with Second Receiver for Bedroom • Fully Automatic Digital Satellite System with Second HD Ready Receiver for Bedroom • In-Motion Digital Satellite System with Second HD Ready Receiver for Bedroom • Exterior Entertainment Center with Flip-Down 20" LCD TV, IR Repeater, AM/FM/CD/DVD/MP3 Player |
| INTERIOR: FEATURES | | OPTIONS |
| <ul style="list-style-type: none"> • Stained or Natural Oak Cabinetry • Lined Cabinet Shelves • Dinette Wall Cabinet with Corian® Top • Built-In Storage Area for Kitchen Countertop Covers • Bedroom Dresser • Clothing Hamper in Bedroom • Low-Friction Roller Drawer Guides • Recessed Ceiling Design • Corian® Countertops Throughout • Integrated Corian® Sinks in Vanity and Galley • Corian® Backsplash above Kitchen Countertop • Glass Splash Guard at Living Area Side of Kitchen Countertop • Day/Night Pleated Shades in Living Area and Blackout Shades in Bedroom | <ul style="list-style-type: none"> • Mini Blinds in Kitchen and Bathroom • Wallpaper Throughout • Four-Compartment Drawer Organizer in Galley • Designer Textured Carpet in Living Area and Bedroom • Ceramic Tile in Kitchen, Bath and Entry • Raised Panel Door for Private Bath • Bedspread and Pillows • Nightstands with Corian® Countertops • Corian® Windowsills in Living Area • Recessed Galley Area Surround Sound Speakers in Ceiling • Pearl Nickel/Polished Brass on Hardware Throughout • Decorative Hardwood Slide-Out Fascia | <ul style="list-style-type: none"> • Interior Decors: Napa Onyx II, Florentine Red, Amber Sunset, Alabaster Clay • Cabinetry: Stained or Natural Cherry, Natural Maple or Mahogany Stained Cherry • Sculptured Carpeting in Living Area • Powered Blinds in Living Area (N/A with Slide-Out Endwall Windows) • Plank Flooring in Kitchen and Bath |
| FURNITURE: FEATURES | OPTIONS | |
| <ul style="list-style-type: none"> • Legless Side-Slide Corian® Dinette Table with Two Freestanding Dinette Chairs and Two Folding Chairs • Roadside: Fabric Sleeper Sofa • Curbside: Fabric J-Lounge (N/A: 40PBTR, 43PRT, 45PBTR) • Curbside: Leather Euro-Recliner with Ottoman (40PBTR and 45PBTR with Two Chairs, 43PRT with One Chair) • Additional Bedroom Wardrobe (N/A: 40PBTF, 40PBTR, 40PBQ, 43PRT) • Queen Mattress (60" x 80') | <ul style="list-style-type: none"> • King Bed • Queen Air Mattress with Digital Remote • King Air Mattress with Digital Remote • Wraparound Computer Table Driver's Side (Deletes Slide-Out Fascia Cabinet) • Curbside: Leather J-Lounge | <ul style="list-style-type: none"> • Curbside: Leather Sleeper Sofa • Roadside: Leather Sleeper Sofa • Bedroom Desk and Chair with Pullout Ottoman (43PBQ) • Fabric Booth Dinette |

AT HOLIDAYRAMBLER.COM, WE'RE ALWAYS OPEN.

Visit our website anytime day or night to check out the latest product news and updates. You can also take a factory tour, find a dealer near you, get information on club events and much more. It's also an easy way to contact us via e-mail.

www.holidayrambler.com



| ELECTRICAL SYSTEM AND LIGHTS: FEATURES | | OPTIONS |
|--|---|---|
| <ul style="list-style-type: none"> • 50 Amp 120/240V Distribution Panel and Power Cord with Quick Disconnect • Onan® 10 kW QD Diesel Generator on Power Slide-Out Tray with Auxillary Start Switch and Automatic Temperature Start • 2,800 Watt Pure Sine Wave Inverter with Auto Generator Start and Auto Temperature Start • Pilot and Co-Pilot Map Lights • Decorative Lighting in Living Area and Bedroom • Cosmetic Vanity Lights in Bathroom • Switches for Bedroom Decorative Lights on Both Sides of Bed • Recessed Halogen Lighting under Living Area and Dinette Overhead Cabinets • Halogen Lighting in Ceiling Throughout | <ul style="list-style-type: none"> • Accent Rope Lighting throughout Coach • Lighted Utility Center • Underhood Utility Light • 120V Outlet in Private Bath • 120V Outlet in Bed Base • 120V Receptacles in Outside Storage Compartment • Porch Light • Doorbell • Lighted Exterior Storage Compartments • Four 6V Deep Cycle House Batteries • Two 12V Deep Cycle Chassis Batteries • Surge Guard Automatic Transfer Switch • Multiplex 12V Wiring for Dash/Instrument Panel Gauges and Interior of Coach | <ul style="list-style-type: none"> • Solar Panel • Power Cord Reel • All Electric Coach: Two 2,800 Watt Pure Sine Wave Inverters and 5 AGM Batteries, 270 Amp Alternator, Residential Refrigerator, Princess Two-Burner Cooktop and Two Solar Panels (N/A: 45PBTR, 45PBQ) • Four Additional 6V House Batteries (Required with Residential Refrigerator) |
| PLUMBING AND LP SYSTEMS: FEATURES | | OPTIONS |
| <ul style="list-style-type: none"> • Central Water Filtration System in Service Bay • Manabloc Water System for Entire Coach • 10-Gallon LP Gas/Electric Water Heater with Electronic Ignition • Insulated Systems Compartment with Easy Access to Hook-Ups • Water Pump Switch in Galley, Bathroom and Service Bay • China Toilet • Super Service Center | <ul style="list-style-type: none"> • Corian® Shower with Tile Accent and Shower Caddy • Shower Head Volume Control • Black Holding Tank Rinsing System • Outside Faucet with Hot and Cold Water • Soap Dispenser in Kitchen | <ul style="list-style-type: none"> • Power Water Hose Reel • RV Sani-Con Tank Drainage System • Ozone Water Filter at Kitchen Sink • Insta-Hot® Water System • Bathtub (N/A: 40PBTF, 40PBTR, 40PBQ) |
| HEATING, VENTS AND AIR CONDITIONING: FEATURES | | OPTIONS |
| <ul style="list-style-type: none"> • Two Low-Profile Ducted 15,000 BTU Roof Air Conditioners with Wall Thermostat and Heat Pump (40' Floorplans Only) • Three Low-Profile Ducted 15,000 BTU Roof Air Conditioners with Wall Thermostat and Heat Pump (43PRT, 43PBQ, 45PBQ, 45PBTR) • Two 25,000 BTU Electronic Ignition Furnaces | <ul style="list-style-type: none"> • Electronic AC/Heat Climate Control System • Center Defroster Vents • 12V Attic Fan in Bathroom and Private Lavatory • 12V Attic Fan with Wall Thermostat in Kitchen | <ul style="list-style-type: none"> • Aqua-Hot® Heating System (ILO Furnace and Water Heater) • One Low-Profile 110V Baseboard Heater in Galley |
| WINDOWS, DOORS AND AWNINGS: FEATURES | | OPTIONS |
| <ul style="list-style-type: none"> • Flush Mount Radius Dual Pane Safety Glass Dark Tinted Windows • Front Entry Door with Air Seal, Removable Top Screen and Automatic Front Door Awning • Keyless Remote Entry System with Pocket Remote • Tinted Skylight in Bathroom | <ul style="list-style-type: none"> • Topper Awnings on Slide-Out Houses • Window Awnings on All Slide-Outs House Windows (N/A with Passenger Side Front Slide-Out Windows) • Patio Awning with Color-Coordinated Hardware | <ul style="list-style-type: none"> • Carefree® Automatic Patio Awning • Girard® Automatic Patio Awning (Eliminates Front Door Awning on Double Slide-Outs and Rear Triples) • Girard® Automatic Front Door Awning |
| SAFETY: FEATURES | | OPTIONS |
| <ul style="list-style-type: none"> • Back-Up Alarm • Fire Extinguisher • Deadbolt Lock on Entrance Door • Lighted Interior and Exterior Grab Handles • 120V GFI Protected Circuit (Kitchen, Bath, Service Bay) | <ul style="list-style-type: none"> • LP Gas Detector • Smoke Detector • Carbon Monoxide Detector • Integrated Pilot and Co-Pilot Three-Point Seat Belts • Third Brake Safety Light • Egress Windows | <ul style="list-style-type: none"> • Security Safe • Deluxe Security Alarm System • Collision Avoidance System |

| Weights (Lbs.) | 40PBTF | 40PBTR | 40PBQ | 43PRT |
|----------------------------------|--------|--------|--------|--------|
| Gross Vehicle Weight Rating | 48,160 | 48,160 | 48,160 | 48,160 |
| Gross Combined Weight Rating* | 58,160 | 58,160 | 58,160 | 58,160 |
| Gross Axle Weight Rating (Front) | 15,160 | 15,160 | 15,160 | 15,160 |
| Gross Axle Weight Rating (Rear) | 23,000 | 23,000 | 23,000 | 23,000 |
| Tag Axle Weight Rating | 10,000 | 10,000 | 10,000 | 10,000 |

| Measurements | | | | |
|-----------------|---------|---------|---------|---------|
| Wheelbase | 245" | 245" | 245" | 269.5" |
| Overall Length | 40' 10" | 40' 10" | 40' 10" | 43' 10" |
| Exterior Height | 12' 3" | 12' 3" | 12' 3" | 12' 3" |
| Interior Height | 82" | 82" | 82" | 82" |
| Interior Width | 96" | 96" | 96" | 96" |
| Exterior Width | 100.5" | 100.5" | 100.5" | 100.5" |

| Tank Capacity (Gal.)** | | | | |
|------------------------|-----|-----|-----|-----|
| Water Heater | 10 | 10 | 10 | 10 |
| Gray Tank | 56 | 56 | 56 | 56 |
| Black Tank | 56 | 56 | 56 | 56 |
| Fresh Tank | 100 | 100 | 100 | 100 |
| Fuel Tank | 150 | 150 | 150 | 150 |
| LP Tank*** | 38 | 38 | 38 | 38 |

| Weights (Lbs.) | 43PBQ | 45PBTR | 45PBQ |
|----------------------------------|--------|--------|--------|
| Gross Vehicle Weight Rating | 48,160 | 48,160 | 48,160 |
| Gross Combined Weight Rating* | 58,160 | 58,160 | 58,160 |
| Gross Axle Weight Rating (Front) | 15,160 | 15,150 | 15,160 |
| Gross Axle Weight Rating (Rear) | 23,000 | 23,000 | 23,000 |
| Tag Axle Weight Rating | 10,000 | 10,000 | 10,000 |

| Measurements | | | |
|-----------------|---------|---------|---------|
| Wheelbase | 269.5" | 281.5" | 281.5" |
| Overall Length | 43' 10" | 44' 10" | 44' 10" |
| Exterior Height | 12' 3" | 12' 3" | 12' 3" |
| Interior Height | 82" | 82" | 82" |
| Interior Width | 96" | 96" | 96" |
| Exterior Width | 100.5" | 100.5" | 100.5" |

| Tank Capacity (Gal.)** | | | |
|------------------------|-----|-----|-----|
| Water Heater | 10 | 10 | 10 |
| Gray Tank | 56 | 56 | 56 |
| Black Tank | 56 | 56 | 56 |
| Fresh Tank | 100 | 100 | 100 |
| Fuel Tank | 150 | 150 | 150 |
| LP Tank*** | 38 | 38 | 38 |

* Towing capacity is limited by GCWR; your vehicle's towing capacity is the difference between the GCWR and the actual vehicle weight, including all water, fuel, passengers and cargo. Your towed vehicle should be equipped with auxiliary brakes if the weight of the towed vehicle exceeds 1,000 lbs. Consult your Owner's Manual for further towing information.

** All tank capacities are estimated based upon calculations provided by the tank manufacturers and represent approximate capacities. The actual "usable capacity" may be greater or less than the estimated capacities based upon fabrication and installation of the tanks.

*** Actual filled LP capacity is 80% of listing due to safety shut-off required on tank.

Due to the large variety of options and floorplan arrangements available to our customers, actual weights for each unit can differ significantly. Holiday Rambler provides a weight sticker on each unit we produce which includes that unit's tank capacities and approximate weight. Consult your local Holiday Rambler dealer for unit availability and further information.

The information printed in this brochure reflects product design, fabrication, and component parts at the date of printing. The manufacturer reserves the right, at any time, to make changes in product design or material or component specifications as its sole option, without notice. This includes the substitution of components of a different brand or trade name, which will result in comparable performance. All information printed in this brochure is subject to change after the date of printing. Some features shown or mentioned in this brochure are optional and may only be available in selected floorplans. Photographs may show props or decorations that are not standard equipment on Holiday Rambler models. Holiday Rambler, the HR logo and its design, are registered trademarks. All other products and company names are trademarks and/or registered trademarks of their respective holders.

While the color of the motorhome's exterior and the interior fabrics depicted in this sales brochure are fair and reasonable depictions, the colors depicted may not be an exact match of the actual colors because of the variances in photo-processing and variances caused by inserting the photographs within the sales brochure. Due to product improvements, changes during the model year and/or transcription errors that may occur, information represented within this brochure may not be accurate at the time of your purchase. If certain information is significant to your purchasing decision, please confirm the information with your dealer prior to submitting your order.

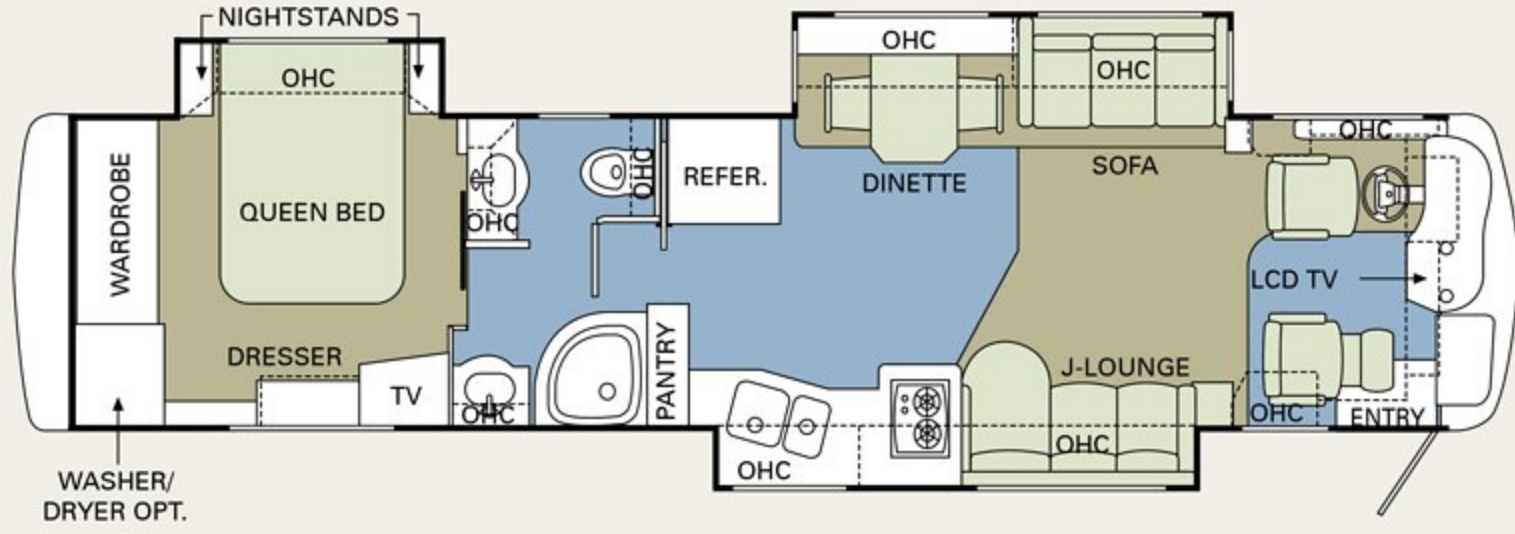
The actual overall length of the recreational vehicle may differ from that indicated in the brochure due to variances in the manufacturing process and/or installed components. The actual length may be greater or less than that indicated.

Component part and appliance manufacturers issue limited warranties covering those portions of the recreational vehicle not covered by the Limited Warranties issued by Monaco Coach Corporation. To learn which specific component parts and appliances are excluded from the Limited Warranties issued by Monaco Coach Corporation, please contact your selling dealership or Monaco Coach Corporation directly, or review the warranty packet inside the recreational vehicle.

40PBTF

Options:

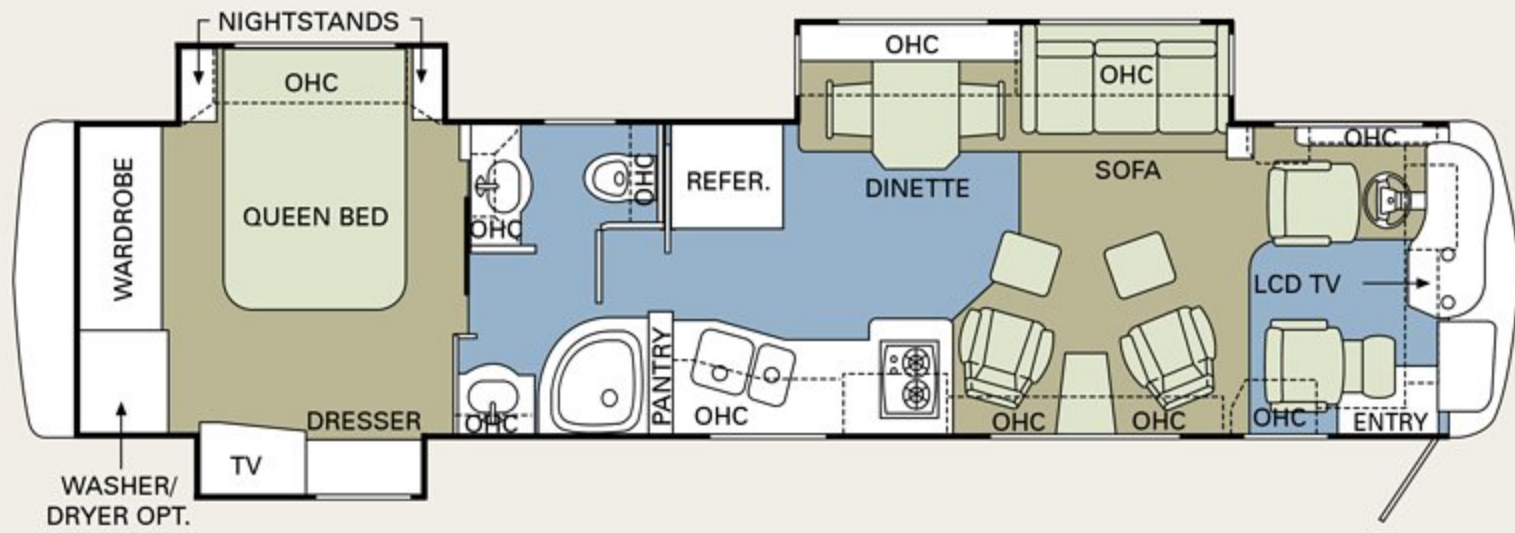
- A
- C
- E
- G
- K



40PBTR

Options:

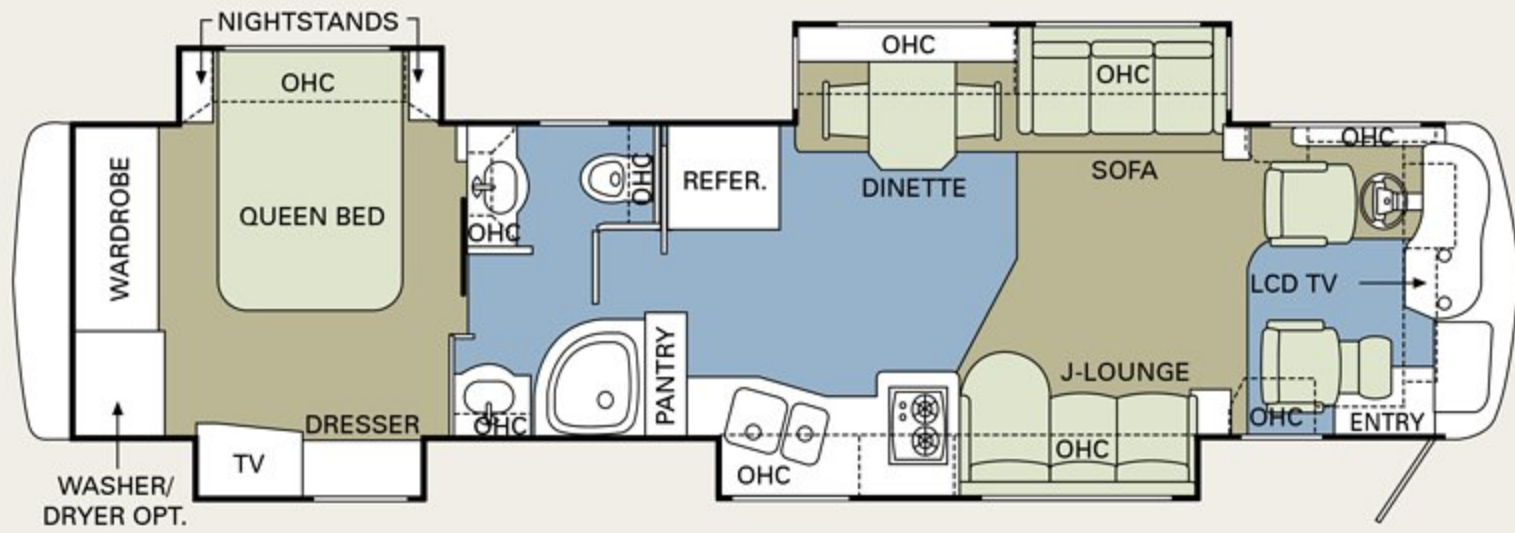
- A
- C
- E
- G
- K



40PBQ

Options:

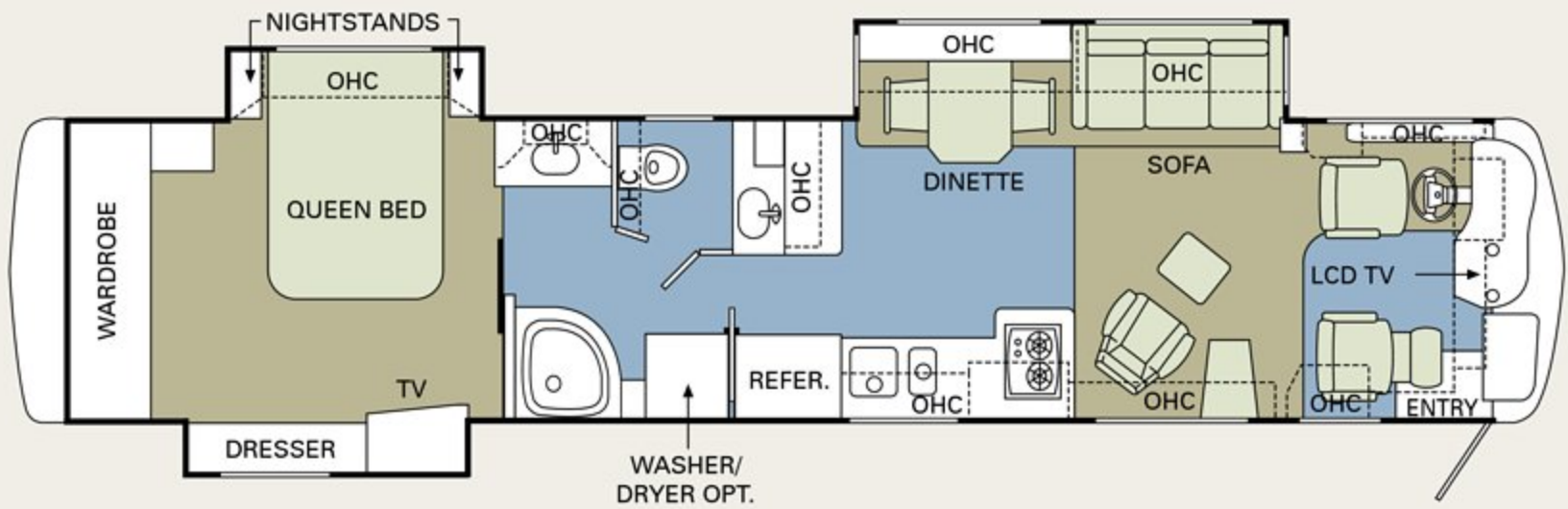
- A
- C
- E
- G
- K



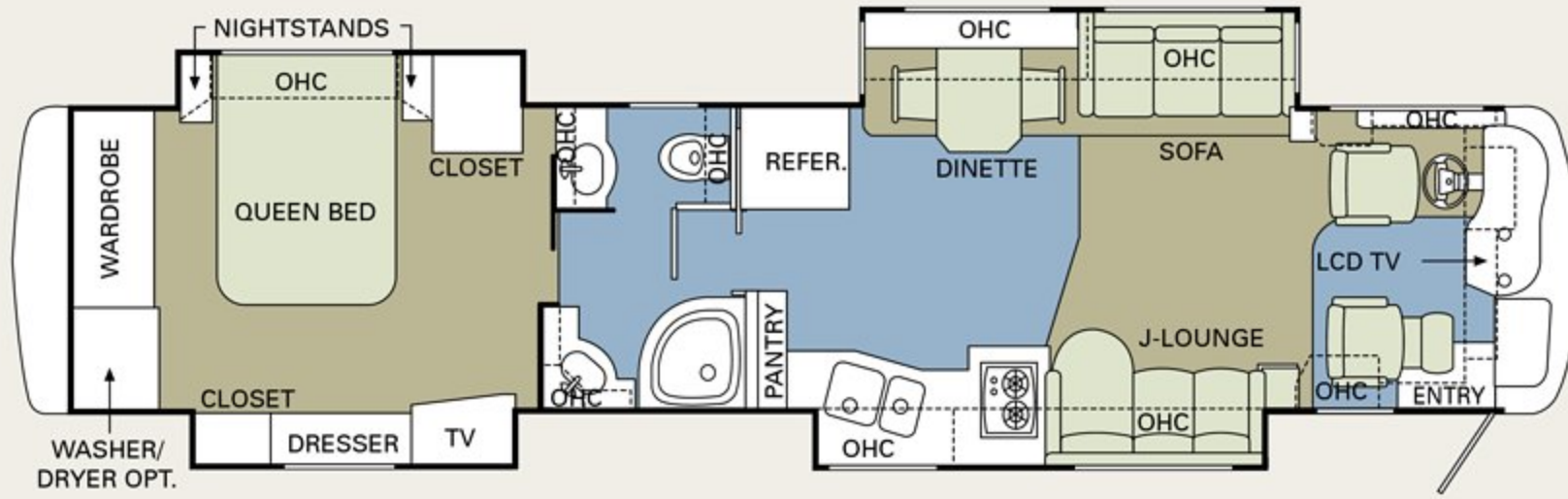
43PRT

Options:

- A
- C
- E
- F
- G
- K



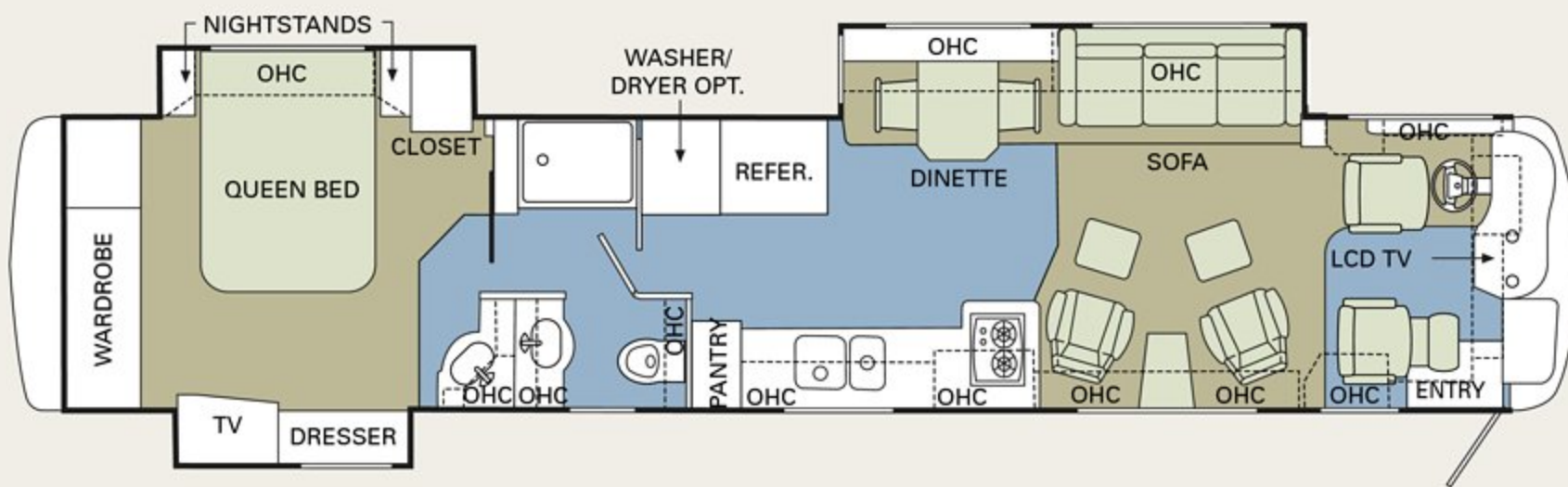
■ CARPET | ■ TILE



43PBQ

Options:

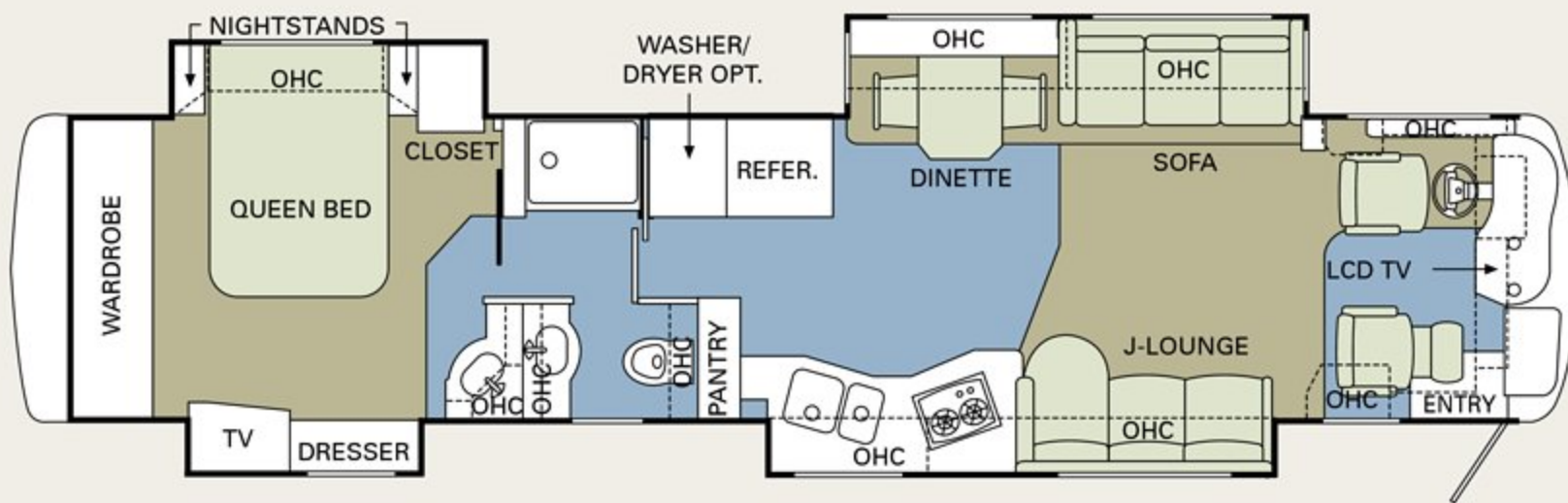
- B
- C
- E
- G
- H
- I
- J
- K



45PBTR

Options:

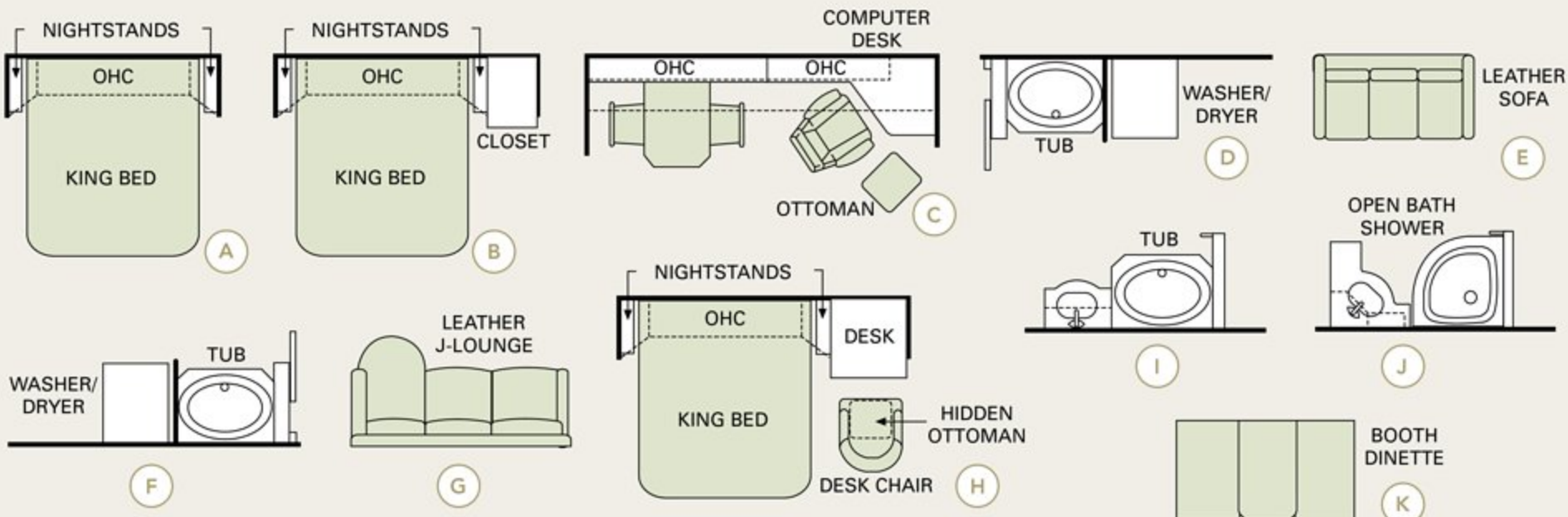
- B
- C
- D
- G



45PBQ

Options:

- B
- C
- D
- E
- G
- K



OPTIONS

20 NAVIGATOR® 06



Thank you for taking a closer look at the 2006 Navigator. In addition to the state-of-the-art technologies and creature comforts you'll see here, our flagship includes countless conveniences and safety innovations you'll want to experience firsthand. Poke around. Kick the tires. Open and shut every door and drawer — twice. And most importantly, take a drive. You can count on our expert sales team to answer all your questions and demonstrate why this truly is the very best experience the road has to offer.

WARRANTIES

12 MONTH/24,000 MILE basic limited warranty

5 YEAR/50,000 MILE limited warranty on aluminum or steel frame structure of sidewall, roof, front and rear cap

3 YEAR/36,000 MILE limited warranty on Roadmaster chassis

Applies to certain models. See owner's manual for complete details.



606 Nelson's Parkway Wakarusa, IN 46573

www.holidayrambler.com
(800) 245-4778

ALL EYES ON THE ROAD AHEAD.

If you're considering a Holiday Rambler, chances are you share our pioneer spirit. For us, it goes back to 1953, the year we introduced our first travel trailer. Since then, our countless innovations have helped create a rich, rewarding lifestyle — and a new way for families like yours to go exploring.

Yes, we're proud of our heritage — but we're not looking back. In these pages, you'll discover that we continue to lead the entire industry. With exciting new features, powerful chassis, remarkable floorplans and, as always, more ways of keeping you and your loved ones safe.

Whether you're looking for the value of a towable, the convenience and economy of a gas motorhome or the top-of-the-line luxury of a diesel coach — Holiday Rambler has an unbeatable model for your budget. Because in 2006, one thing's for sure. We're still paving the way.




MONACO COACH CORPORATION

Monaco is traded on the New York Stock Exchange under the listing MNC.
© 2005, Monaco Coach Corporation 10/05 NPN:BROHNAV Litho in USA.

