








# Section 6

*Coach House*<sup>®</sup>

PLATINUM

## Galley Systems

# Galley Systems

Refrigerator (3-Way)	6-3
Dometic Refrigerator Manual	6-4
Range	6-5
Cooktop Manual	6-6
Solid Surface Countertops	6-7
Water Pump	6-10
Flojet Water Pump Manual	6-11
Water Heater Systems	6-12
Water Heater Manual	6-13
Microwave/Convection Oven	6-16
Monitor Panel	6-17
Sanitizing the Potable Water System	6-18
How to Winterize	
Blow Dry Method	6-19
Hand Pump Method	6-20
Water Systems Diagrams	6-21
 CH-P-2401 (M241 XL Rear Bed)	6-22
 CH-P-2403 (M241 XL Rear Sofa)	6-23
 CH-P-2201 (J221 XL)	6-24
 CH-P-2301 (H232 XL)	6-25
 CH-P-2801 (G272 XL)	6-26
 CH-P-2601 (D261 XL)	6-27
 CH-P-0007 (231 XL)	6-28

# Refrigerator (3-Way)

All Coach House Motorhomes use Dometic RV refrigerators.

Your Dometic DM2663RBF unit can be energized by electricity using 12 volt or 110 volt. In addition it will run on propane gas. Refer to the refrigerator instruction manual enclosed in this section for lighting and operation of the refrigerator.

A temperature activated fan is mounted in the compartment behind the refrigerator to prevent over heating. This fan will come on when the temperature rises to an unsafe level in the compartment and will not shut off until the temperature has been reduced back to a safe operating level.

## **DM 2663 Americana Plus**

### **More features, more style, more space fridge**



Contemporary exterior with integrated design, optional door insert panels available. Automatic locking handles and right- or left-swinging doors open a full 180 degrees. Lighted fresh food compartment with two crispers Magic Fingers shelf retainers keep bottles and containers from moving.

Efficient Operation Eye-Level Controls, includes automatic LP ignition Dometic's proven absorption technology 3-Way (LP/120V AC/ 12V DC) operation. Climate control system saves energy, and helps prevent condensation.

- Solid Steel Frame offers rugged durability
- Travel latch
- Roomy, versatile 6 cu. ft. interior storage space
- Bright, white, and easy to clean
- Adjustable and removable shelving and door bins in refrigerator and freezer
- Standby feature keeps refrigerator operating in case of malfunction
- Defrost water drain system
- Color: Black frame
- Accepts 2 insert panels
- Superior Warranty Backed by Dometic's Protection Plus Warranty—the strongest warranty in the industry. Extended warranties may also be available. Ask your dealer for details.

#### **Technical Data**

Description	3-Way (12V DC/120V AC/LP Gas)
Door type	Double Door
Dimensions (HxWxD) (in)	52 21/32 x 24 7/8 x 26 1/32
Weight. (lb)	121

# Insert Dometic Refrigerator Manual Here

# Range

The three-burner Atwood Range has a self igniting spark ignition. Turn the spark knob to light each burner. As with any LPG appliance caution should be taken when operating. Refer to the RV Owners manual for more details.

(261 XL / 271 XL / 272 XL models)



The Dometic two burner range is a match light style and needs to be manually ignited every time it is used.

(221XL / 232 XL / 240 / 241 XL models)



**Insert Range Manual Here**

# Solid Surface Countertops

Your Coach House motor home has DuPont Corian Solid Surfaces on all counter top surfaces. The following guidelines will help keep your Solid Surfaces in good condition for years of use.

# DuPont™ Corian® Commercial Care In Use

DuPont™ Corian® solid surfaces meet the demanding needs of today's commercial surfacing applications. As a solid, non-porous surface, Corian® can be maintained with minimum care to retain the original appearance. Because it can be repaired, Corian® will still look and perform like a new installation, while other surfacing materials will often need to be replaced. With proper care the Corian® surfaces in your commercial application will stay looking like new.

For more information, call 1-800-4Corian (1-800-430-6072).

## Routine Care

There are three types of Corian® Solid Surface finishes: matte/satin, semigloss and high-gloss. Contact your Corian® sales expert if you are unsure of your finish. Most countertops and all sinks and lavatories are finished with a matte/satin finish. Soapy water, ammonia-based cleaners or commercially available solid surface cleaners will remove most dirt and residue from all types of finishes. Stubborn residue will require a little stronger cleaner. Follow the recommendations below to properly clean your Corian® Solid Surface application.

### Conventional Cleaning Techniques

- Washing with soap and water is usually sufficient to remove surface dirt or stains. Be sure to wipe surface completely dry.
- Ammonia based liquid cleaner (not window cleaner) may also be used. Always rinse surface thoroughly and wipe dry.
- Drying is an important step, preventing a build-up of soap film or cleaning residue, which can create the appearance of light scratches over time. In the event this occurs, apply a mild abrasive cleaner to a damp sponge or white Scotch-Brite® pad and rub into the surface in a circular motion. When finished, rinse thoroughly to remove all cleaner, then wipe completely dry.
- Stubborn soap film or cleaning residue build-up in Corian® is easily removed with abrasive cleanser and a white Scotch-Brite® pad or a sponge.
- For darker colors, a polish may be used to enhance the shine. For areas where there may be food contact, always use a polish formulated for food contact areas, such as Countertop Magic®. Where food contact is not a possibility, a simple furniture polish may be used. Always follow the manufacturer's instructions for using the polish and for safety concerns.

### Cleaning Agents

Corian® is unaffected by common household and commercial cleaners such as

- Powdered abrasive cleansers (like Comet®)
- Ammonia
- Strong detergents
- Oxalic acid solutions
- Dilute hydrochloric acid solutions
- Dilute trisodium phosphate solutions

***Acid drain cleaners may cause surface damage and should not be used on Corian® solid surfaces.***

### Cigarette Burns, Stubborn Stains

Unlike other surface materials stains or marks caused by cigarettes, alcohol, food, lipstick, hair dye, shoe polish, iodine, marking pens, etc. can be removed by using an abrasive cleanser and a Scotch-Brite® pad.

- If the surface has a **matte finish**, use a **green Scotch-Brite® pad**
- If the surface has a **gloss finish**, use a **white Scotch-Brite® pad**

This type of maintenance will not harm the Corian® surface, and will restore it to "like new" condition.



# DuPont™ Corian® Commercial Care In Use

Surfaces of Corian® can be repaired with no permanent damage. Tough to remove stains, fine scratches, and small cuts can be removed using standard repair techniques.

## Professional repair

Contact DuPont (800.426.7426), or your supplier, for information on how to have your Corian® surfaces professionally restored to their original finish

## Making your own repairs

- To restore a matte finish - use 220 grit sandpaper followed by hard buffing with a green Scotch-Brite® pad in a circular motion.
- To restore a semi-gloss - use the 220 grit sandpaper, followed by 320 grit, followed by 400 grit. Then blend the finish in by using abrasive cleanser and a sponge or rag.
- A high gloss finish is best restored by a professional. Contact your supplier or DuPont.
- If the damage is particularly deep, use a random orbital sander equipped with vacuum dust collection. Start with 120 grit sandpaper first, followed by 180-220 grit. After sanding, a uniform matte finish can be obtained by buffing with a green Scotch-Brite® buffing pad. For a semi-gloss, continue sanding with 320 followed by 400 grit. Then buff with a gray Scotch-Brite® pad.

The impact resistance of Corian® allows it to withstand harsh use without chipping, breaking, or cracking. However, if damaged due to extreme abuse, satisfactory repairs can often be made. Contact DuPont for guidance.

## Preventing Damage

### Avoid Strong Chemicals

Some chemicals are not compatible with Corian®. Avoid surface contact with:

- Strong chlorinated solvents
- Chloroform
- Ketones
- Methylene chloride (paint removers)
- Very strong acids such as concentrated sulfuric and hydrochloric acids
- Acid drain cleaners should not be used.

Surfaces exposed to these agents should be promptly flushed with water. Contact for even a short period of time can cause surface damage, spots, or staining. Follow the recommended repair procedures described above as needed to repair and/or restore the surface to its original condition. Severe damage caused by incompatible chemical contact will require professional repair. Again, contact DuPont, or your supplier for assistance.

While Corian® withstands heat better than most surface materials, do not place hot cookware directly on a Corian® surface. To avoid damage caused by excessive heat:

- Always use a trivet or hot pad under hot cookware
- Always use a trivet with minimum ¼" legs under small electrical appliances such as fryers and cookers

A Corian® surface can be scratched or gouged if used as a cutting or chopping surface for food preparation. Scratches can be repaired, but to avoid the problem, use of a cutting board is highly recommended.

The information contained in this Technical Bulletin is given by E. I. du Pont de Nemours and Company free of charge. It is based upon technical data which DuPont believes to be reliable and is intended for use by persons having knowledge of this technical area at their own discretion and risk. Seller assumes no responsibility for results obtained or damage incurred from the use of this Technical Bulletin either in whole or in part by a buyer of Corian®.

Scotch-Brite® is a registered trademark of the 3M Company. Countertop Magic® is a registered trademark of Magic America Corp. Comet® is a registered trademark of Proctor & Gamble.

Copyright © 2006 DuPont. All rights reserved. The DuPont Oval Logo, DuPont™, The miracles of science™ and Corian® are registered trademarks or trademarks of E. I. du Pont de Nemours and Company or its affiliates.



**corian.**  
SOLID SURFACES



3480 Technology Drive • Nokomis • Florida  
(800) 235-0984 • (941) 485-0984 • (941) 488-4095 FAX  
ON THE WEB: [WWW.COACHHOUSERV.COM](http://WWW.COACHHOUSERV.COM)  
EMAIL: [INFO@COACHHOUSERV.COM](mailto:INFO@COACHHOUSERV.COM)

# Water Pump

When parked where a city or R.V. park water supply is available, the motor home should be connected by using a hose connected to the city water connection. The water pump should not be used when the motor home is connected to city water. The Coach House has a potable water tank with a 12-volt DC demand pump connected to the system. The switch for the demand pump is located either in the lavatory or on the main control panel located adjacent to the entry door. The pump should only be turned on when water is needed from the potable holding tank. Do NOT operate the pump dry or when there is no water in the potable water tank.

Drain valves are supplied on the potable water tank and in the water system near the pump to allow draining the system to prevent freezing.

The potable water fill is located on the side of the motor home behind the labeled door. The potable water tank can also be filled from city water pressure. Open a valve to fill fresh (potable) water tank - turn off when tank is full. The location of the valve (on all models) is inside exterior door - drivers side behind rear wheel.

# Insert Flojet Water Pump Manual Here

# Water Heater Systems



Ford Chassis models are equipped with a 120volt a/c electric / motor aid water heater. The motor aid will automatically heat water when you drive the motor home. The radiator system of the engine helps to heat the water. The 120 volt electric heater can be used while the motor home is parked and hooked up to shore power, or the generator is running.

**Remember to only operate the water heater with water in the system.**



Mercedes-Benz

Your Mercedes Benz Chassis motorhome utilizes eco-friendly tankless water heating. Hot water is produced “on-demand” thereby reducing extra weight and saving energy by making hot water only when needed. This water heater is propane fired and you need to have fuel in your propane tank for this system to work correctly.

**Insert Water Heater Manual Here**



# Endless Hot Water...

From Girard Products

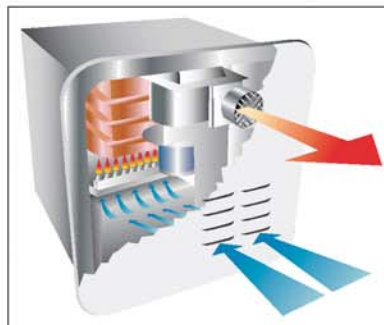
## ***On-Demand*** **Induced Draft LP Gas Tankless Water Heater**

The Girard Products' GSWH-1 Tankless Water Heater incorporates a power blower that forces the combustion air through the heat exchanger (Induced draft). This new design results in a unit capable of providing:

- **Higher Burner Power in a Smaller Package**
- **Higher Combustion Efficiency**
- **Heat Transfer Efficiencies in Excess of 90% without Condensation**
- **Higher Wind Resistance Performance**



MODEL GSWH-1  
(Patent Pending)



### ***What is Induced Draft?***

*A power blower forces the combustion air through the heat exchanger (Induced draft) producing instant hot water.*



**CSA Approved**



GIRARD PRODUCTS, LLC.  
[www.greenrvproducts.com](http://www.greenrvproducts.com)





## The RV Industry's First Induced Draft Tankless Water Heater!

### ADDITIONAL FEATURES:

- **Instant Hot Water**

An unlimited supply of hot water when you need it plus no recovery time!

- **Energy Efficient**

Heat only the water you use. The GSWH1 Tankless Water heater uses 60% less LP gas than current tank models. No tank means no heat loss!

- **Lightweight**

Over 65% lighter than conventional tank model water heaters. Why carry 50-90 lbs. of additional dead weight?

- **Less Space**

12.5"H x 12.5" W X 15.5" D

- **CSA Approved**

CSA approved and certified:  
Designed specifically for RVs.



- **Electronic Ignition - State of the Art Electronics**

No pilot lights or manual burners to keep lighting or adjusting.

- **Temperature Rise**

40° - 60° temperature rise (depending on water flow).

- **DUAL BTU**

For improved energy efficiency, you can change the burner from *Hi-Flame* to *LOW-Flame* (depending on the incoming water temperature).

- **No By-Pass Valving Needed**

The GSWH-1 tankless water heater has no storage tank to by-pass when winterizing the unit.

- **No Rust or Sediment**

Since there is no storage tank, you can forget about replacing anode rods and cleaning rust and sediment out of a tank.

- **TWO YEAR LIMITED WARRANTY**

Specifications	
BTU/HR	34,000 – 27,000
Fuel	Propane (LP Gas)
Inlet Pressure	10.5" WCI Min TO 14" WCI Max
Manifold Pressure	8" – 10" WCI Max
Power Input	12VDC < 3 amp
Water Operating Pressure	125 PSI Max
Maximum Water Temperature	125° F
Dimensions	W 12.5" x H 12.5" x D 15.5"
Shipping Weight (w/shipping box)	23 lbs.



GIRARD PRODUCTS, LLC.

Girard Products LLC.,

1361 Calle Avanzado, San Clemente, CA 92673

Toll Free: 866.559.1221, Local: 949.259.4024

Fax: 949.276.5502

[www.greenrvproducts.com](http://www.greenrvproducts.com)

Copyright 2009 Girard Products LLC

# Microwave/Convection Oven

The microwave oven is mounted above or beside the refrigerator and only operates on the 120 volt A/C system. This oven can be used as a Convection Oven, or a Microwave oven. Refer to the manufacturers instruction manual, enclosed in this section, for operator instructions and helpful cooking hints.

You can access the manual for your Cuisinart Convection/Microwave Oven at:

<http://www.cuisinart.com/share/pdf/manuals/cmw-200.pdf>





# Monitor Panel

The monitor panel is located in the main control tower inside the motorhome entry door to the right. It will indicate the water level in the potable water tank, the level in the holding tanks, the level of propane gas, and the charge level of the auxiliary batteries. To check the level, push the test button on the panel and observe the level indicator lights that are lit to read the level.



# Sanitizing the Potable Water System

To assure complete sanitation of your potable water system, the following procedures are recommended for a new system, for one that has not been used for a period of time, and for one which may have become contaminated.

- 1) Prepare a chlorine solution using one (1) gallon of water and one-quarter (1/4) cup of household bleach (2% sodium hypochlorite solution). With tank empty pour one (1) gallon of solution into tank for each fifteen (15) gallons of tank capacity.
- 2) Complete filling of tank with fresh water. Operate all faucets to release trapped air. Pressurize the entire system with a pump, if available, and turn off pump.
- 3) Allow to stand for three (3) hours.
- 4) Drain and flush with fresh potable water.
- 5) To remove excessive chlorine taste or odor, which may remain, prepare a solution of one (1) quart vinegar to five (5) gallons of water and pour into tank. Allow solution to agitate in tank by vehicle motion (several days if possible)
- 6) Drain tank and flush with fresh potable water.

# How to Winterize

## Blow Dry Method

1) Empty and thoroughly rinse waste holding tank.

2) Drain all water lines. Drain valves are located behind a hinged panel on the rear of the driver's side of motor home. Be sure to drain shower, toilet and all faucets. If a water purifier or filter is in line, remove the cartridge. Close all faucets. The fresh water tank drain is accessible inside an access panel depending on your model:

221 XL	Under the Galley
232 XL	Passenger Side Behind the Wheel Well
240	Passenger Side Under the Bed
241 XL (Rear Bed)	Passenger Side Behind the Wheel Well
241 XL (Twin Bed)	Passenger Side Behind the Wheel Well
261 XL	Driver's Side Behind the Galley
261 XL (Twin Bed)	Passenger Side Under the Bed
261 XL (Sleeper Sofa)	Driver's Side Near the Shower
271 XL	Under the Galley
272 XL	Under the Rear Queen Bed

3) Blow lines dry by building up pressure and open one faucet at a time letting any extra water escape.

4) Drain water heater (outside) and by-pass water heater to disconnect cold and hot water lines. By-pass kit to by-pass heater is standard equipment.

5) Pour non-toxic antifreeze into water tank. Build up pressure again or activate water pump and open faucets one at a time to be sure to get antifreeze up into each faucet. Flush toilet until antifreeze flushes into bowl.

6) Pour approximately 1 cup of antifreeze into each sink trap and shower trap.

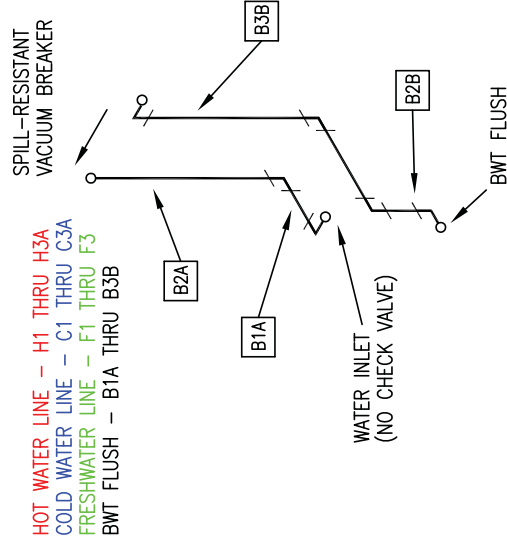
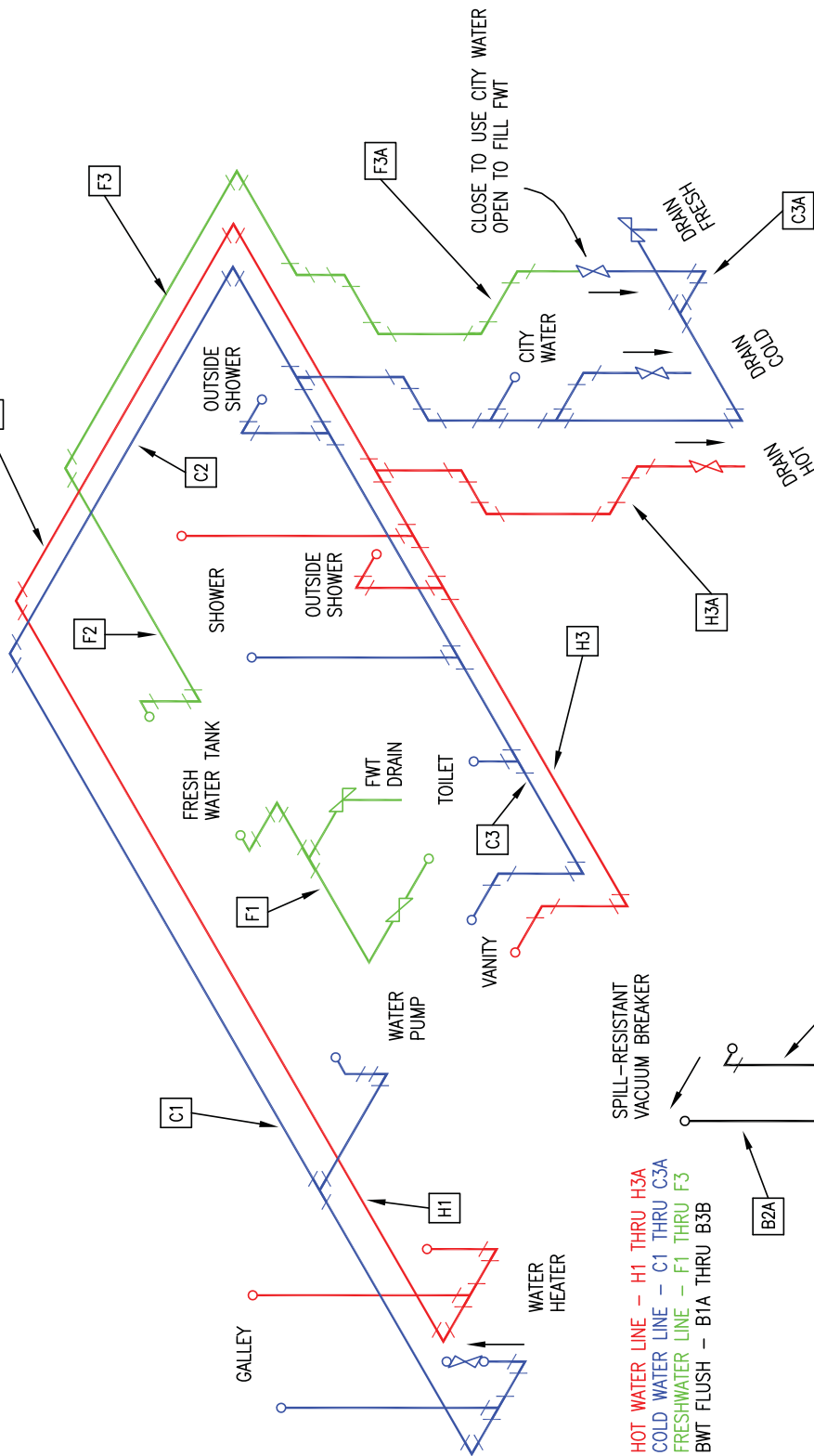
# How to Winterize

## Hand Pump Method

- 1) Follow steps 1 through 4 on Blow Dry method.
- 2) Make sure all faucets are closed.
- 3) Hook up hand pump to kitchen faucet with tube end in a gallon jug of non-toxic antifreeze. Open hot water faucet at kitchen and begin to pump. After pumping approximately 1/2 gallon, open hot water faucet in bathroom sink until antifreeze runs through. Do the same for the other faucets.
- 4) Do the same now at cold water lines in kitchen, bathroom and shower. Do not forget to winterize the toilet.
- 5) Pour a little extra antifreeze down the kitchen sink, bathroom sink, shower and toilet drains.

# Water Systems Diagrams

SHEET NO.	1	2	3	4	5	6	7	8	9
REVISION	4	4	4	4	4	2	2	2	3

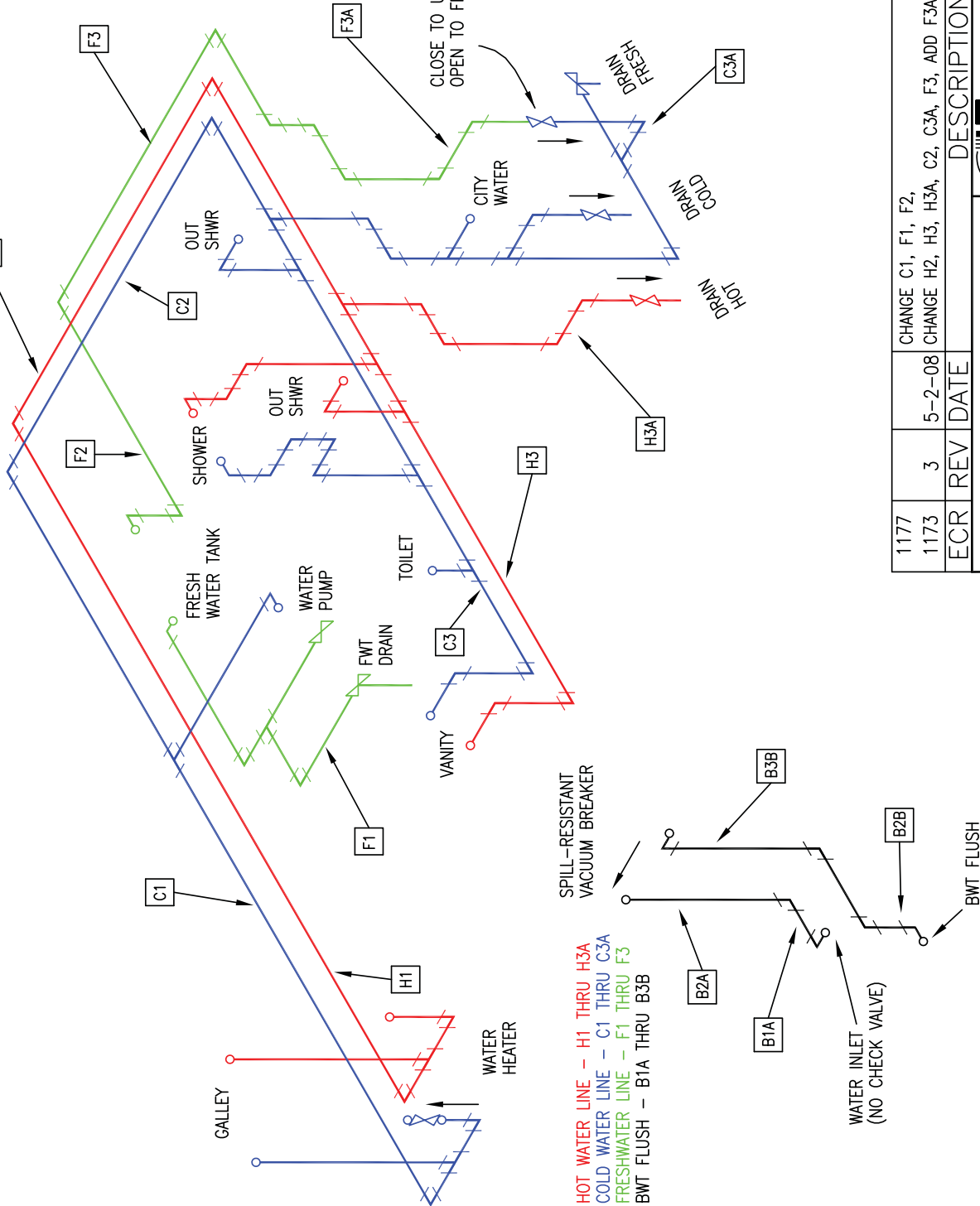


HOT WATER LINE - H1 THRU H3A  
 COLD WATER LINE - C1 THRU C3A  
 FRESHWATER LINE - F1 THRU F3  
 BWT FLUSH - B1A THRU B3B

1238	4	10-21-08	CHANGE H2, H3, H3A, C2, C3A.z
1173	3	5-2-08	CHANGE H2, H3, H3A, C2, C3A, F3, ADD F3A.
1140	2	3-7-08	CHANGE SHEET 1 THRU 9 FOR M0010.
ECR	REV	DATE	DESCRIPTION

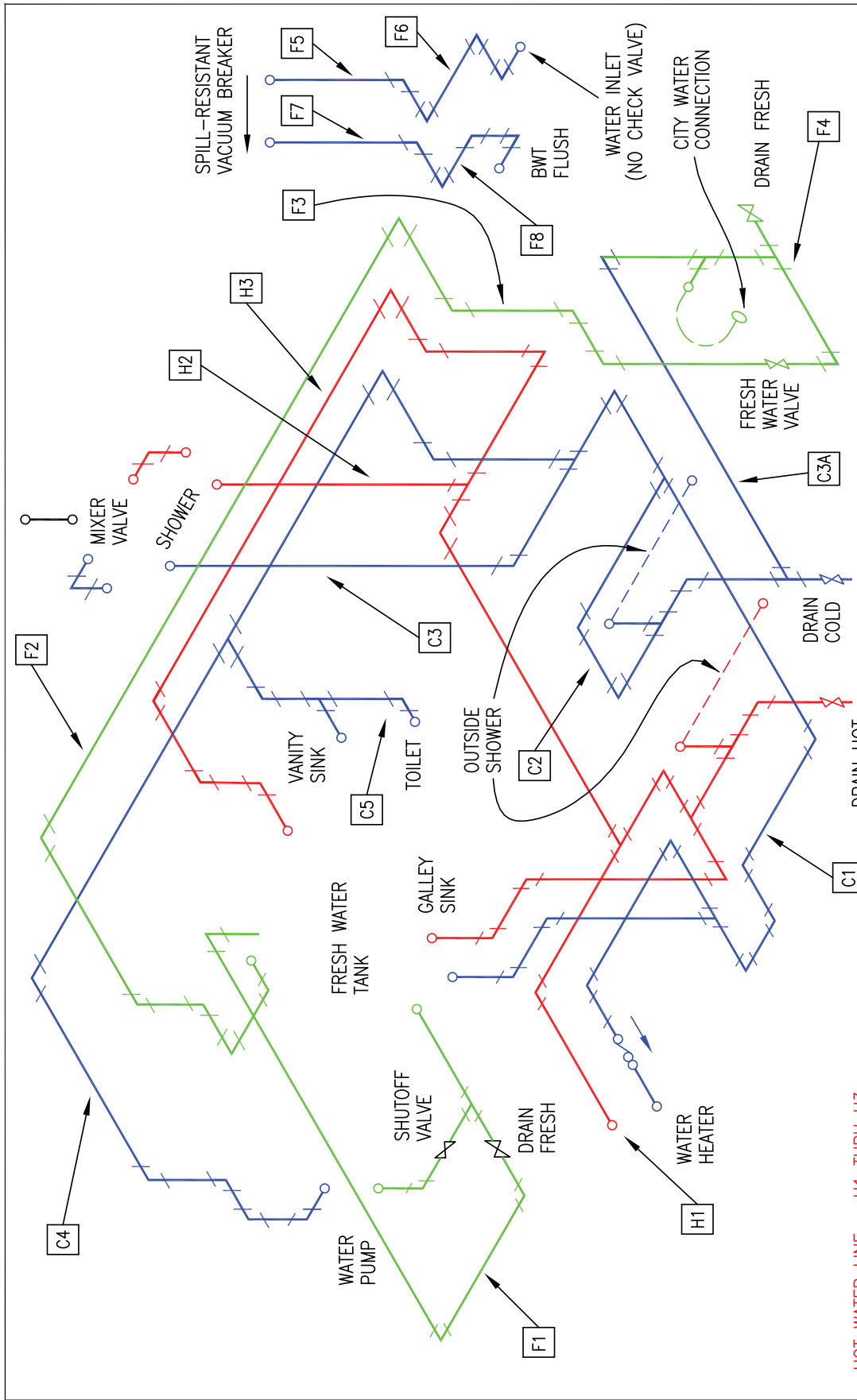
M241 PLATINUM II WATER SYSTEM (REAR BED MODEL)	<b>Coach House</b> Van Motor Homes
SHEET 1	No. CH-P-2401

SHEET NO.	1	2	3	4	5	6	7	8	9
REVISION	3	1	3	3	3	0	0	1	3



1177	CHANGE C1, F1, F2,	DESCRIPTION
1173	CHANGE H2, H3, H3A, C2, C3A, F3, ADD F3A.	
ECR	REV DATE	
	3	5-2-08
M241 PLATINUM II WATER SYSTEM (REAR SOFA MODEL)		
Coach House Van Motor Homes		
No. CH-P-2403		


SHEET 1



HOT WATER LINE - H1 THRU H3  
COLD WATER LINE - C1 THRU C5  
FRESHWATER LINE - F1 THRU F8

1112	6	10-5-07	CHANGE H1, C3A, F8, F6, F3, H3, C4, F2, C1 & C2 & DRAIN VALVE ASSY.
1090	5	3-23-07	CHANGE F1 & F2.
1044	4	2-12-07	CHANGE F2.

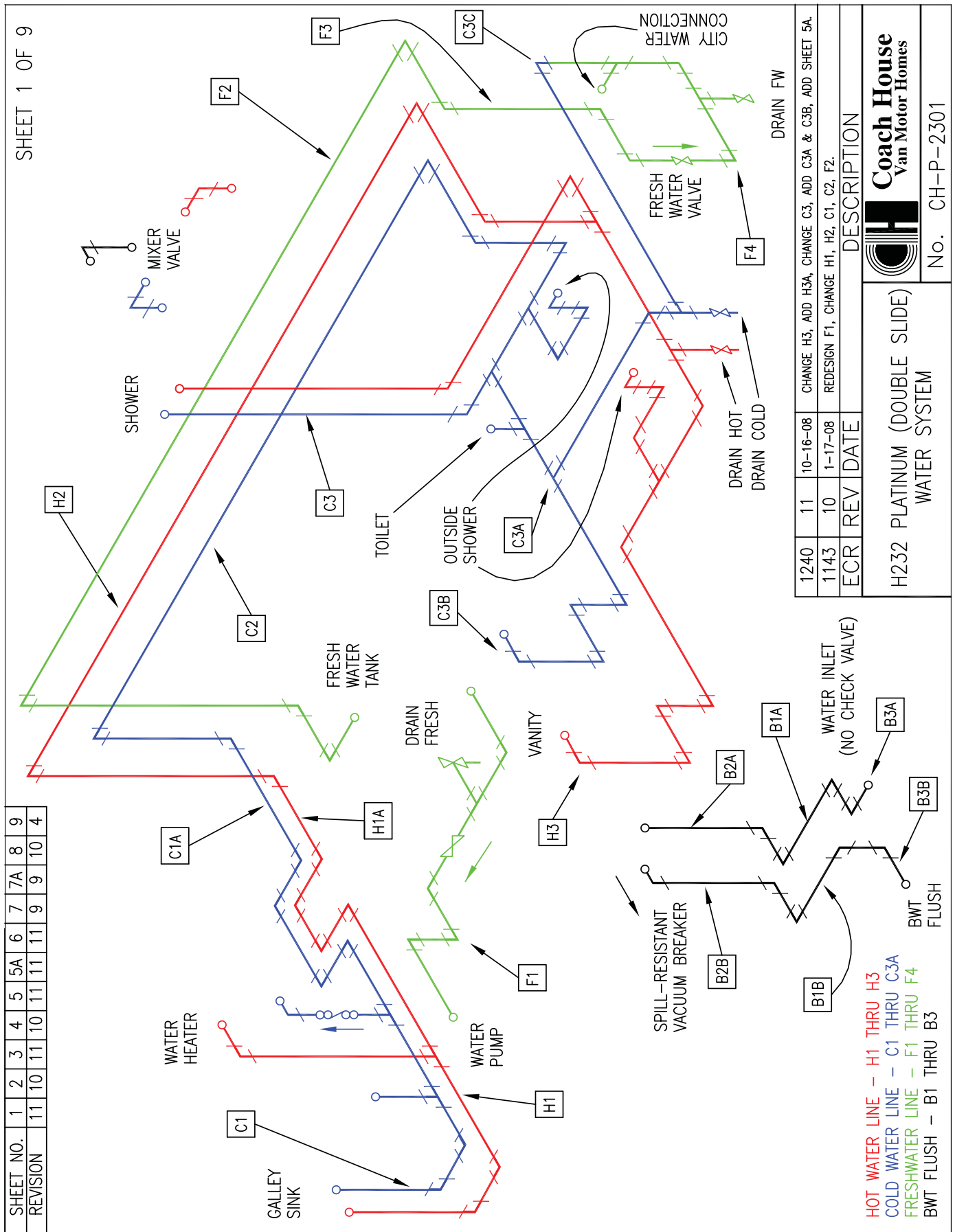
ECR	REV	DATE	DESCRIPTION
-----	-----	------	-------------

J221 PLATINUM WATER SYSTEM			<b>Coach House</b> Van Motor Homes
		No. CH-P-2201	

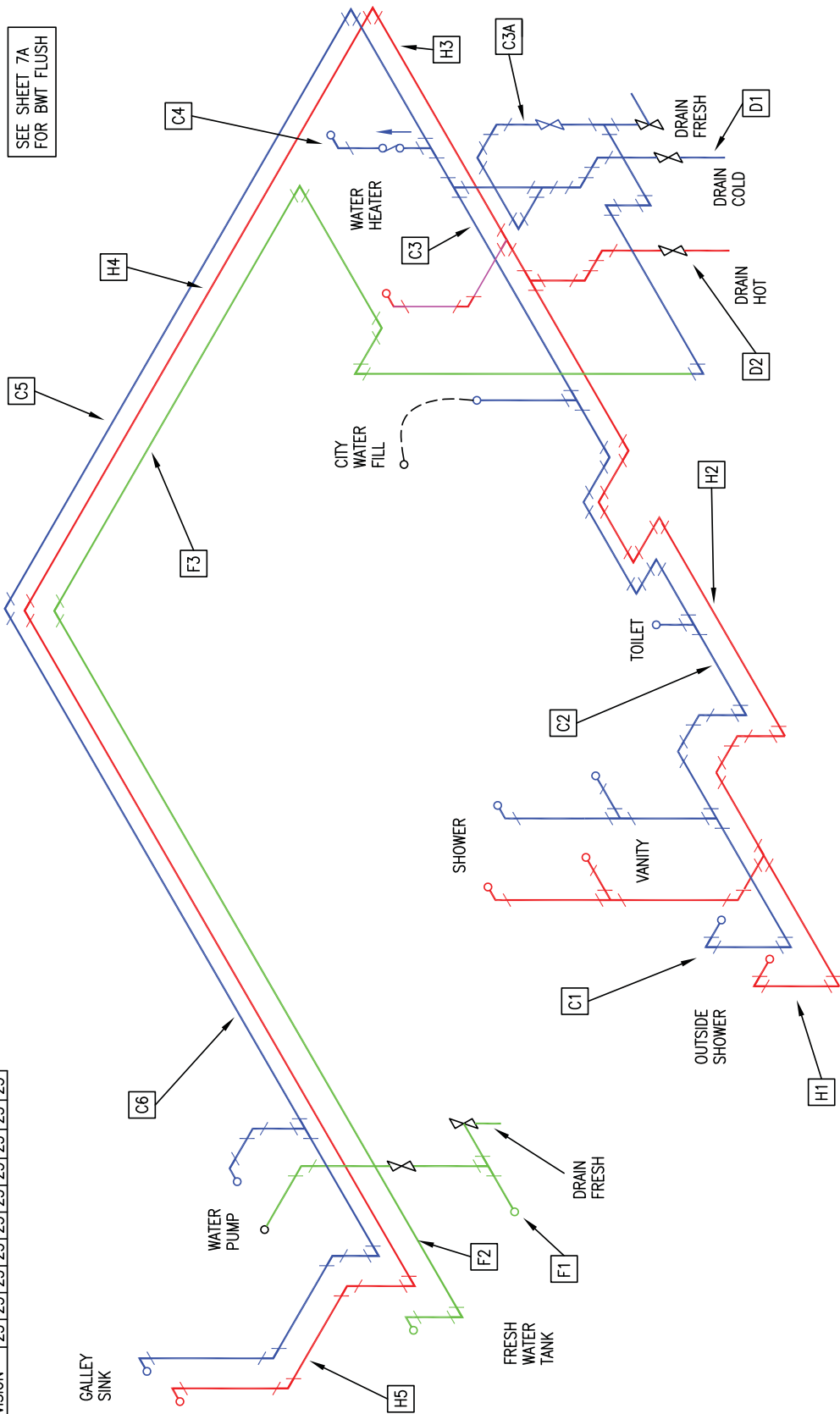
SHEET 1 OF 9

SHEET NO.	1	2	3	4	5	6	7	8	9
REVISION	6	6	6	6	6	6	6	6	6






SHEET NO.	1	2	3	3A	4	5	5A	6	7	7A
REVISION	23	23	23	23	23	23	23	23	23	23



HOT WATER LINE - H1 THRU H5  
 COLD WATER LINE - C1 THRU C6  
 FRESHWATER LINE - F1 THRU F3

1325	23	5-18-10	MAKE MODEL G SAME AS MODEL K EXCEPT FOR BWT FLUSH.
ECR	REV	DATE	DESCRIPTION
G272 PLATINUM WATER SYSTEM			
No. CH-P-2801			

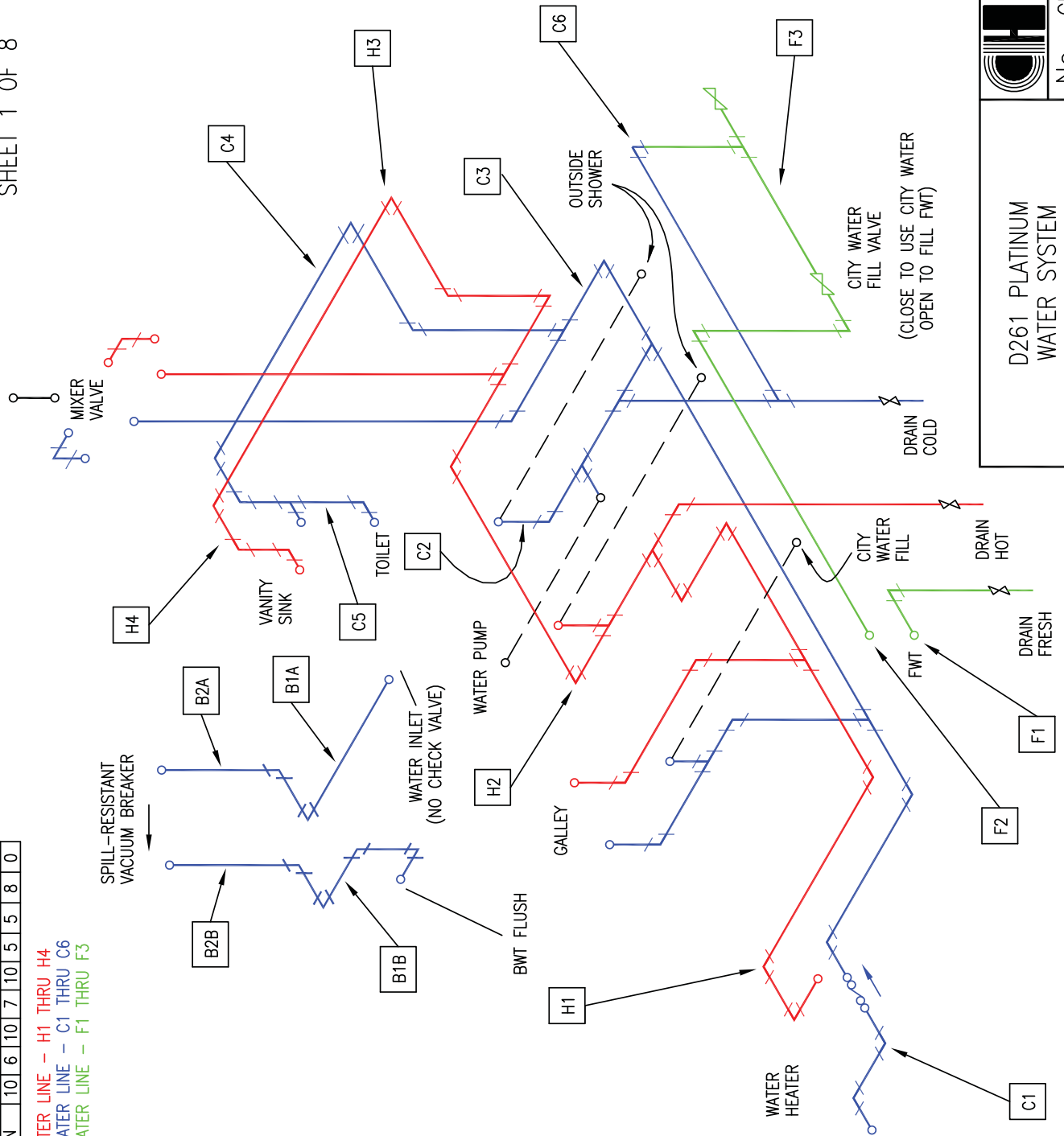
ALL DIMENSIONS ARE IN INCHES

SHEET 1 OF 7

SHEET NO.	1	2	3	4	5	6	7	7A	8
REVISION	10	6	10	7	10	5	5	8	0

HOT WATER LINE -- H1 THRU H4  
COLD WATER LINE -- C1 THRU C6  
FRESHWATER LINE -- F1 THRU F3

SHEET 1 OF 8



ECR	REV	DATE	DESCRIPTION
1089	10	7-23-30	CHANGE C4 & H4.
0976	9	8-31-06	CHANGE C3 & H3.
0949	8	5-17-06	ADD BWT FLUSH TO SHEET 1 & 7A.
0775	7	5-3-05	UPDATE C1.
0751	6	3-16-05	UPDATE C1 & H1.
0735	5	2-25-05	REVISE CITY WATER FILL.

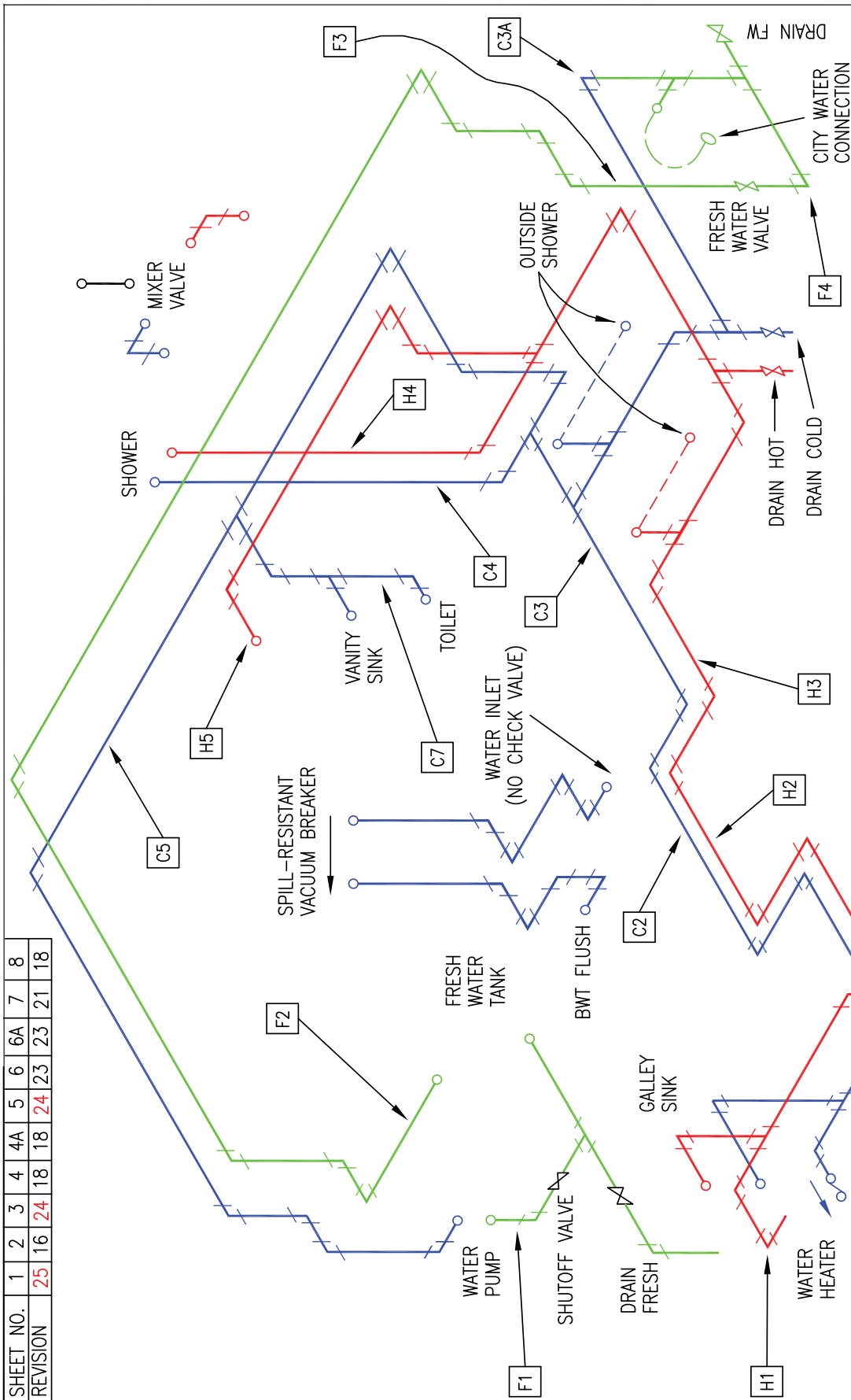


**Coach House**  
Van Motor Homes


D261 PLATINUM  
WATER SYSTEM

No. CH-P-2601

SHEET NO.	1	2	3	4	4A	5	6	6A	7	8
REVISION	25	16	24	18	18	24	23	23	21	18



1017	25	12-4-06	DELETE C6 PART OF C5.
0956	24	7-5-06	REVISE H4 & C4.
0949	23	5-16-06	ADD BWT FLUSH TO SHEET 1 & 6A, MOVE MIXER VALVE TO SHEET 6.
ECR	REV	DATE	DESCRIPTION

231 PLATINUM WATER SYSTEM (NEW SLIDE-OUT)	 <b>Coach House</b> Van Motor Homes
	No. CH-P-0007

SHEET 1 OF 8

ALL DIMENSIONS ARE IN INCHES