



Coach House

PLATINUM[®]

Section 8

Optional Equipment

Ford Motor Company

Rev: 010418



**E-450
SUPER DUTY CHASSIS**

Optional Equipment

Solar Battery Charger	8-5
Radio / Backup Camera	8-9
Power Sofa/Bed	8-11
Dometic Legless Motorized Awning	8-13
Dometic Legless Motorized Awning Manual	8-15
Bose Surround Sound System	8-21
Heated Holding Tanks	8-23
Equalizer Systems Stabilizers	8-25
Safe-T-Plus Steering Control	8-27

Solar Battery Charger

The solar charger will charge the auxiliary batteries with the master 12 Volt switch in the “on” or “off” position. A Charge Controller will optimize the charging rate and cut off the charging current when the batteries are fully charged. Optimal charging will be obtained in direct sunlight.



The charge controller panel is located just inside the entry door to the right. It will show the status of the charging system and the status of the “house” battery circuits. Refer to the Carmanah manual for instructions.





Solar Module and Controller

Solar cell type	Monocrystalline
Output power	160 W
Rated current	8.84 A
Rated DC voltage	18.42 V
Open-circuit voltage	22.77 V
Module efficiency	16.4%
Connectivity	MC4 connectors
Solar controller	30 A PWM, multi battery option, 4 stage charging, digital display and flush mount
Frame type	Clear anodized aluminum frame
Certifications	CE
Dimensions	59.1 x 26.3 x 1.57 in / 1500 x 668 x 40 mm
Weight	32 lbs / 14.5 kg
Warranty	25 years power output (module) 5 years (controller)



Digital Solar Controller SPECIFICATIONS

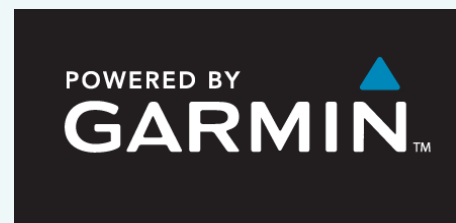
GP-PWM-30

Nominal System Voltage	12V
Max Solar Array Current	30A
Battery Voltage Range	6V -- 15.5V
Max. Solar panel input voltage	28V
Operating Consumption	6mA
Display Consumption	10mA
Temp. Compensation	-13mV/°F (- 24mV/°C)
Operating Temperature	- 40 to 185°F (-40 to 85°C)
Humidity	99% N.C.
Dimensions (H x W x D)	4.25 x 7.48 x 1.38 in (108 x 190 x 35 mm)
Weight	10.6 oz (300 g)
Maximum Wire Gauge	#4 AWG
Warranty	5 years
Protection	Battery Reverse Polarity, Solar Array Reverse Polarity, Over temperature, Over Current

Back-Up Camera / Radio



FUSION RV INFOTAINMENT SYSTEM



A QUALITY EXPERIENCE

SMART CONTROL

The large 8" daylight viewable touch screen allows for easy navigation and music selection with FUSION preview and gesture control. Smartphone app remote and steering wheel controls are also available on compatible vehicles for quick access to music or handsfree calling.

BLUETOOTH AUDIO STREAMING

Connect any compatible Bluetooth smartphone or media device for endless streaming of the family's favorite soundtracks on the open road. With Bluetooth the latest streaming services such as Pandora, Spotify and Apple Music can be enjoyed for a limitless source of entertainment (individual apps are required on connected device).

SIRIUSXM SATELLITE RADIO

With more than 175 channels available on the SiriusXM Satellite network a host of entertainment is on call 24/7. **Note:** A SiriusXM vehicle connect tuner and subscription are required (only available in the United States of America).



HANDS-FREE

On the go real time driving navigation keeps the driver's eyes on the road while the audio prompts lead the way.

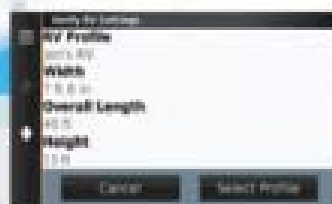
If a phone call comes in, the built-in hands-free calling function allows the user to stay focused while the integrated microphone and connected speakers make conversation flawless.

REAR VIEW CAMERA COMPATIBLE

To ensure the safety of those onboard and outside the RV, the FUSION RV-IN801 is ready to display the rear view camera feed from a compatible camera.

For the convenience and safety of others, a rear camera feed enables the driver to observe the following traffic and/or tow behinds for complete peace of mind - Safety made Simple.

CUSTOMIZED RV ROUTING



CUSTOM ROUTING

Not all roads are created equal and the size of your customer's RV plays a crucial role in deciding which route to take. By creating a unique RV user profile, inputting height, length, width and weight, the RV-IN801 can suggest the most efficient route to their destination - no more backtracking and close calls.

Pre-loaded with RV-specific route restrictions and warnings, including: bridge heights, sharp curves and related information for most major roads and highways. The RV-IN801 puts confidence in the driver's seat.



ROAD WARNINGS



REAL DIRECTIONS

DIRECTORIES OF RV PARKS & SERVICES



DIRECTORIES



SEARCH & FILTER



UP AHEAD INFORMATION

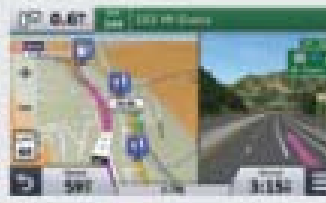
With a database of close to 20,000 RV parks and campgrounds in Northern America, including state parks, national parks and privately owned campgrounds, the RV-IN801 is a wealth of knowledge and the perfect companion during an on-road expedition.

Destinations can be filtered by amenities to ensure there are no surprises upon arrival, and in addition the database holds the locations of RV-specific facilities such as towing, tire repair and truck stops which can be easily added to the navigation for seamless driving.

THE CONFIDENCE TO EXPLORE



BIRDS EYE JUNCTION VIEW



PHOTOREAL JUNCTION VIEW



LANE GUIDANCE

Clearly spoken directions and easy to read information will ensure safe travels and happy campers. Exclusive features such as lane guidance, birds eye junction and photoreal junction view keep the driver firmly on the right path, while the brightly colored on screen arrows lead the way.

Power Sofa/Bed

Optional Equipment. Power Sofa/Beds are made by Kustom Fit, a division of Villa Industries. The fabric used matches the driver and passenger chairs and has a durability rating to last a long life in your motorhome.

The power sofa/bed has 4 functions:

- 1) Move sofa away from outer wall.
- 2) Convert sofa to bed.
- 3) Move bed toward outside wall to adjoin stationary cushion.
- 4) Convert bed to sofa & move toward outside wall.

You may operate the power sofa/bed with slide-out room extended or with room not extended.

Do NOT Continue to hold the button down once the sofa has extended or retracted. You can cause damage to the gears with prolonged use.



Dometic Legless Motorized Awning



Your Coach House Platinum has been equipped with the Dometic 9500 series legless motorized awning. Electrical power allows the unit to automatically retract using power from the “house” batteries in the event of unforeseen inclement weather.

Make sure your Battery Cutoff Switch is in the ON position any time the Electric Awning is deployed. Damage to your Awning or Motorhome may occur if power is not available in the event of inclement weather.

There is a motion sensor attached to the lead rail of the awning which will force the awning to retract if the motion becomes violent enough to cause damage to the unit.

The main control for the awning is located just inside the main motorhome door on the “Tower of Power”.

Clean your awning with mild soap and water only.

Insert Dometic Awning Manual Here



RECORD THIS INFORMATION FOR FUTURE
REFERENCE:

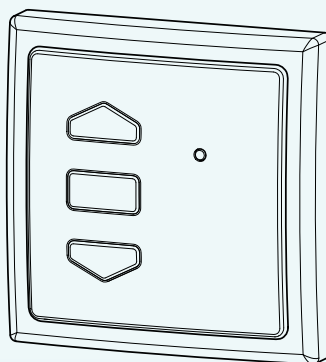
Model Number _____
Serial Number _____
Date Purchased _____
Retailer / Qualified Installer _____

USA
SERVICE OFFICE
Dometic, LLC
2320 Industrial Parkway
Elkhart, IN 46516
574-294-2511

CANADA
Dometic, LLC
46 Zatonski, Unit 3
Brantford, ON N3T 5L8
CANADA
519-720-9578

**For Service Center
Assistance Call:**
800-544-4881

**3313943.000
REMOTE WALL
CONTROL KIT**



**INSTALLATION & OPERATING
INSTRUCTIONS**

**3313943.000
REMOTE WALL
CONTROL KIT**

3314042.000

Form No. 3314042.000 02/11
(French 3314043.000)
©2011 Dometic, LLC
LaGrange, IN 46761

**Important: These Instructions must
stay with unit. Owner read carefully.**

PLATINUM
Rev: 010418

3480 Technology Drive • Nokomis • Florida • 34275
(800) 235-0984 • (941) 485-0984 • (941) 488-4095 FAX
www.coachhouseserv.com

GENERAL INSTRUCTIONS

These instructions apply to:

202(XX)(XX).000(#) 9500E Cassette Awnings
203(XX)(XX).000(#) DA20(XX) Cassette Awnings

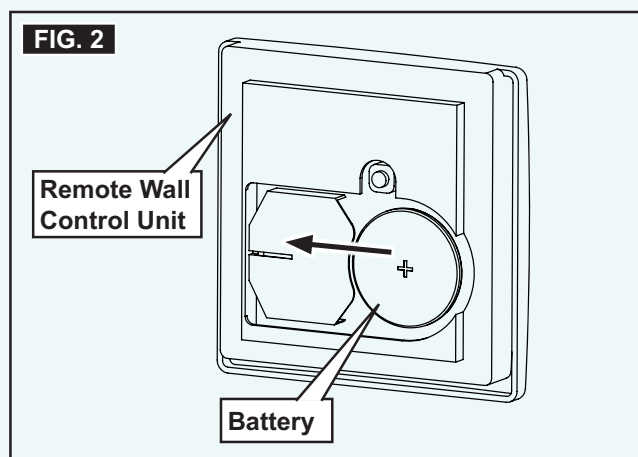
This kit consists of:

- (1) Installation & Operating Instructions
- (1) Awning Remote Wall Control Unit with Base

Dometic, LLC reserves the right to modify appearances and specifications without notice.

2. On back of remote wall control unit, place and slide battery into battery clip until fully engaged. See FIG. 2.

Note: Make sure battery has positive side up.



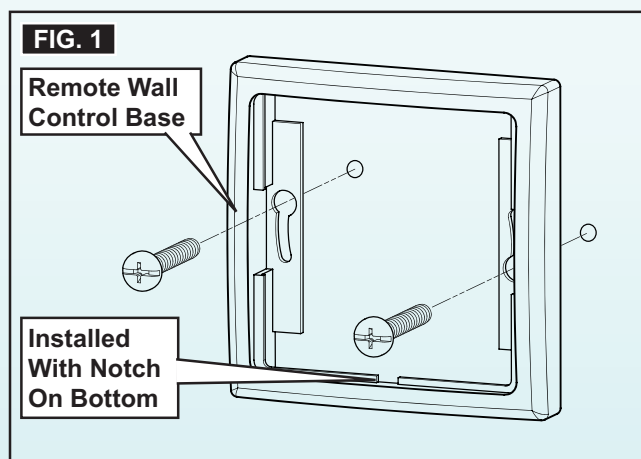
PROCEDURE

A. Install Remote Wall Control Unit

NOTICE

Do not expose remote and remote holster to weather, extreme temperatures, or long hours in direct sunlight. Failure to obey this notice could result in property damage.

1. Locate a suitable location for remote wall control base that's protected from weather and other adverse conditions, and install with two screws. See FIG. 1.



B. Activate Remote Wall Control Unit

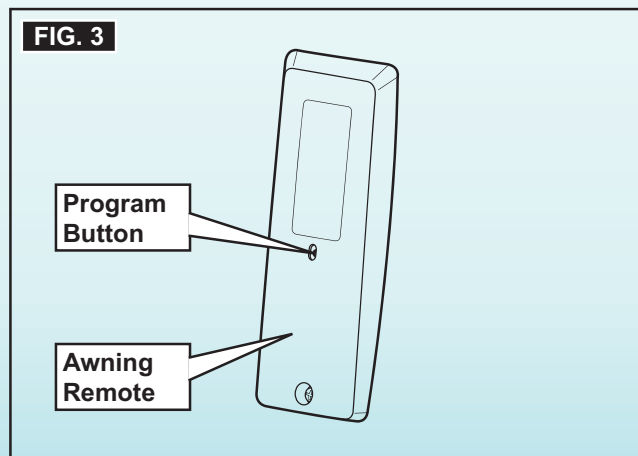
More than one remote may be added to operate the awning if desired.

Note: Refer to the operating instructions that came with your awning if this remote is a replacement, and no other remote is programmed to the awning.

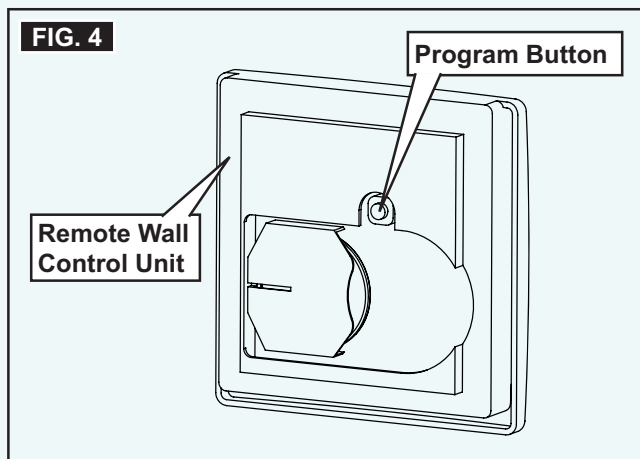
1. Make sure power is supplied to awning motor.

Note: There should already be at least one remote programmed to the awning motor at this stage.

2. Using a remote that already controls the awning motor, press and hold the program button on back for approximately (3) seconds. Awning motor should jog momentarily. See FIG. 3.

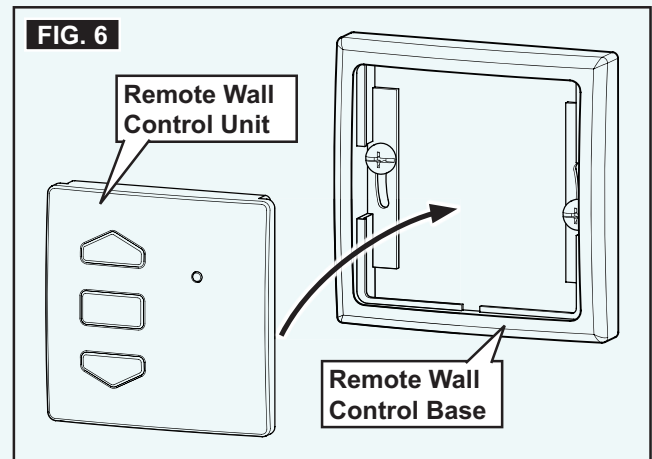


3. Press and hold the program button on back of remote wall control unit for approximately (3) seconds. Awning motor should jog momentarily. See FIG. 4.



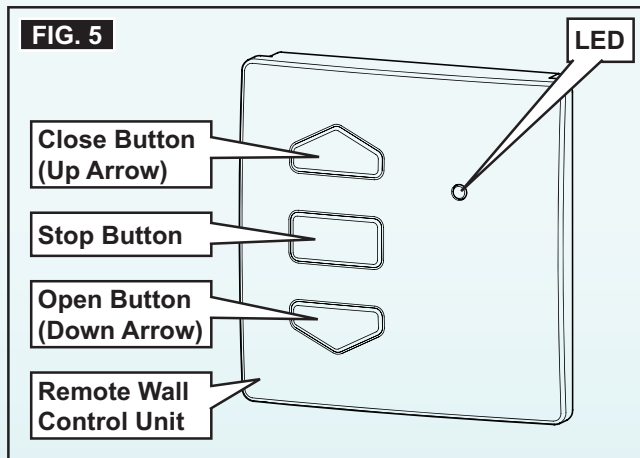
5. Install the remote wall control unit onto remote wall control base by snapping it in place. See FIG. 6.

Note: To remove remote wall control unit from base, use flat bladed screw driver to disengage tab at bottom notch. See FIG. 1.



4. Verify awning motor and remote functionality.
 - a. Press the open button (down arrow) briefly on awning remote wall control unit. Awning should extend to its out limit. See FIG. 5.

Note: If awning does not respond, verify LED lights momentarily (on remote wall control unit) when button is pressed. If LED does not light, install new batteries.



C. Operate Remote

1. See "Procedure" under awning Operating Instructions for specific operating information.

Bose Surround Sound System



CineMate® Series II digital home theater speaker system

- A 2.1-channel speaker system with compact speakers and improved digital acoustic performance
- Designed to enhance the audio from your TV and existing video sources
- Available with Gemstone speakers and universal remote or Articulated Array speakers and simplified, four-button remote.
- 3D-compatible with 3D TVs, Blu-ray Disc™ players, gaming consoles and other 3D sources
- Simplified setup, with only a few connections to make

The Bose® CineMate II speaker system is the easiest way to enjoy Bose 2.1-channel home theater performance and bring out the full audio potential of your HDTV. Proprietary TrueSpace® technology enables two compact speakers and an Acoustimass® module to deliver compelling sound for movies, games, sports and more. The system easily connects directly to your TV, avoiding the need to disconnect other sources. And with no rear speakers, there's no wiring to the back of your room.

Heated Holding Tanks

Heated Holding tanks are installed as optional equipment on your Coach House Platinum.

Manufactured by ULTRA HEAT INDUSTRIES, the tank heaters come in four sizes.

The larger tank heaters are equipped with a thermal sensor which will prevent the heaters from being activated unless the ambient air temperature is below 46 degrees Fahrenheit. This protection is to make sure your heaters do not come on inadvertently and “cook” the contents of your holding tanks.

ULTRA HEAT INDUSTRIES warrants tank heaters for a period of one year from the time of purchase and any failures should be reported directly to them at their factory.



UHI Worldwide, Inc.
1314 Perkins St.
P.O. Box 1454
Elkhart, IN 46515-1454
USA



Product Insert

ONE-YEAR LIMITED WARRANTY

All UHI stock items carry a one (1) year warranty under normal use against manufacturing defects in UHI materials and/or workmanship. The warranty coverage starts on the date of the original purchase. This Limited Warranty covers only those defects which occur or exist within the one (1) year period referenced above. Any modification of UHI products, from original design and/or intended use, or improper installation shall **VOID** all warranties.

All of UHI's obligations pursuant to this Limited Warranty are limited to replacing the product at no additional cost or issuing an account credit memo for the product's cost.

WARRANTY EXCLUSIONS

UHI MAKES NO OTHER WARRANTIES, EXPRESS OR IMPLIED, including any IMPLIED WARRANTY OF MERCHANTABILITY, FITNESS FOR A PARTICULAR PURPOSE, or NONINFRINGEMENT. In no event shall UHI be liable for special, indirect, or consequential damages arising out of the limited warranty.

To the extent that applicable state and/or federal law prohibits the exclusion of any remedy permitted under state or federal law, any such remedy, including, but not limited to, implied warranties of merchantability, fitness, use, or purpose, is limited to **one (1) year** from the date of the original purchase.

PROPER USE OF TRADEMARKS

UHI Worldwide, Inc., Ultra Heat, Inc., UltraHeat®, and Ultra-Heat™ and all individual product trademarks, service marks, logotypes, commercial symbols, insignias, and designs pertaining thereto, as they appear in any advertising medium, are proprietary marks of UHI Worldwide, Inc., and UHI owns all right, title, and interest in and to these proprietary marks. Trademarks and trade names may not be used in connection with any product or service that is not provided by UHI, in any manner that is likely to cause confusion among customers, or in any manner that disparages or discredits UHI. Purchaser shall not remove, alter, or otherwise modify any identification marks or trademarks affixed by UHI to products.

REPACKAGING

UHI products shall not be repackaged without the express, written approval of UHI. Under no circumstances shall UHI product labeling be removed, obstructed, or altered.

www.uhiworldwide.com

Equalizer Systems Stabilizers



Straighten Up With Stabi-Lite®

Equalizer Systems has introduced a new stabilizing system designed for Class C motorhomes. If you are tired of your coach leaning when the slide room is extended, or fed up with the constant swaying when you walk around in your coach, let STABI-LITE® stabilize your RV. It's an easy way to keep you walking straight.



- Eliminates coach lean when slide is extended
- Clamp style mount requires no welding or drilling to install
- Convenient, one-touch automatic operation
- Eliminates nearly all sway resulting from coach movement
- Low profile design decreases height required by traditional systems
- Complete system weight of less than 80 lbs.
- Chassis specific design reduces installation time

Safe-T-Plus Steering Control



STEERING CONTROL (Silver)

Safe-T-Plus high-performance steering controls are designed to reduce over-steering your vehicle making it easier to drive to your destination. Safe-T-Plus is perfect for Class C [Motorhomes](#), towing/hauling trucks, SUV's, Vans, and large passenger vehicles.

FEATURES

- Positive Centering Capabilities
- Hydraulic Shock Absorption
- Long lasting metallic plating
- Maintenance-Free
- Simple Bolt-On [Installation](#)
- 2 Year Warranty

BENEFITS

- Reduce Driver Fatigue from Oversteering
- Protects against front-tire blowouts
- Keeps vehicle centered against side winds, passing Semi's
- No more "white-knuckle" driving
- More relaxed driving
- Decreased wear-and-tear on front end
- Protects your family and investment

Ensuring the highest safety engineering and quality manufacturing into each unit for your safety is our first priority. We start with only the best available materials from the most trusted names in the raw materials industry. Each Safe-T-Plus steering control is cut to precision with our state-of-the art production systems.

Each unit is then measured with caliper precision readings to ensure they meet our strict tolerances.

Safe-T-Plus' heavy-duty mechanical coils are an integral part of our "positive centering-point tracking" capabilities which are set specifically for each model to accommodate virtually every chassis type on the road today. To further protect the quality performance of Safe-T-Plus, several metallic plating processes is used on the internal and external components of the unit to prevent corrosion from various harsh climate conditions.

Each Safe-T-Plus unit is equipped with specialized heavy-duty hydraulic capabilities that are designed to maintain performance standards in most extreme hot and cold temperatures. North, south, east, west, it does not matter, Safe-T-Plus can manage any of your road travels.

