



*Coach House*

**PLATINUM<sup>®</sup>**

## **Section 6**

### **Galley Systems**

*Ford Motor Company*



**E-450  
SUPER DUTY CHASSIS**

Rev: 092215



# Galley Systems

Refrigerator (3-Way)	6-5
Dometic Refrigerator Manual	6-7
Range	6-9
Cooktop Manual	6-11
Solid Surface Countertops	6-13
Water Pump	6-17
Shurflo Water Pump Manual	6-19
Water Heater Systems	6-21
Water Heater Manual	6-23
Microwave/Convection Oven	6-25
Monitor Panel	6-27
Sanitizing the Potable Water System	6-29
How to Winterize	
Blow Dry Method	6-31
Water Systems Diagrams	6-33
CH-P-2202 (S220)	6-34
CH-P-2201 (J221 XL)	6-35
CH-P-2301 (H232 XL)	6-36
CH-P-2801 (G272 XL)	6-37
CH-P-2601 (D261 XL)	6-38
CH-P-0007 (231 XL)	6-39



# Refrigerator (3-Way)

All Coach House Motorhomes use Dometic RV refrigerators.

Your Dometic DM2663RBF unit can be energized by electricity using 12 volt or 110 volt. In addition it will run on propane gas. Refer to the refrigerator instruction manual enclosed in this section for lighting and operation of the refrigerator.

A temperature activated fan is mounted in the compartment behind the refrigerator to prevent over heating. This fan will come on when the temperature rises to an unsafe level in the compartment and will not shut off until the temperature has been reduced back to a safe operating level.

## **DM 2663 Americana Plus** **More features, more style,** **more space fridge**



Contemporary exterior with integrated design, optional door insert panels available. Automatic locking handles and right- or left-swinging doors open a full 180 degrees. Lighted fresh food compartment with two crispers Magic Fingers shelf retainers keep bottles and containers from moving.

Efficient Operation Eye-Level Controls, includes automatic LP ignition Dometic's proven absorption technology 3-Way (LP/120V AC/ 12V DC) operation. Climate control system saves energy, and helps prevent condensation.

- Solid Steel Frame offers rugged durability
- Travel latch
- Roomy, versatile 6 cu. ft. interior storage space
- Bright, white, and easy to clean
- Adjustable and removable shelving and door bins in refrigerator and freezer
- Standby feature keeps refrigerator operating in case of malfunction
- Defrost water drain system
- Color: Black frame
- Accepts 2 insert panels
- Superior Warranty Backed by Dometic's Protection Plus Warranty—the strongest warranty in the industry. Extended warranties may also be available. Ask your dealer for details.

### **Technical Data**

Description	3-Way (12V DC/120V AC/LP Gas)
Door type	Double Door
Dimensions (HxWxD) (in)	52 21/32 x 24 7/8 x 26 1/32
Weight. (lb)	121



# Insert Dometic Refrigerator Manual Here





# Range

The three-burner Atwood Range has a self igniting spark ignition. Turn the spark knob to light each burner. As with any LPG appliance caution should be taken when operating. Refer to the RV Owners manual for more details.

(261 XL / 271 XL / 272 XL models)



The Dometic two burner range is a match light style and needs to be manually ignited every time it is used.

(220 / 221XL / 232 XL)





# Insert Range Manual Here



# Solid Surface Countertops

Your Coach House motor home has DuPont Corian Solid Surfaces on all counter top surfaces. The following guidelines will help keep your Solid Surfaces in good condition for years of use.

# DuPont™ Corian® Commercial Care In Use

DuPont™ Corian® solid surfaces meet the demanding needs of today's commercial surfacing applications. As a solid, non-porous surface, Corian® can be maintained with minimum care to retain the original appearance. Because it can be repaired, Corian® will still look and perform like a new installation, while other surfacing materials will often need to be replaced. With proper care the Corian® surfaces in your commercial application will stay looking like new.

For more information, call 1-800-4Corian (1-800-430-6072).

## Routine Care

There are three types of Corian® Solid Surface finishes: matte/satin, semigloss and high-gloss. Contact your Corian® sales expert if you are unsure of your finish. Most countertops and all sinks and lavatories are finished with a matte/satin finish. Soapy water, ammonia-based cleaners or commercially available solid surface cleaners will remove most dirt and residue from all types of finishes. Stubborn residue will require a little stronger cleaner. Follow the recommendations below to properly clean your Corian® Solid Surface application.

### Conventional Cleaning Techniques

- Washing with soap and water is usually sufficient to remove surface dirt or stains. Be sure to wipe surface completely dry.
- Ammonia based liquid cleaner (not window cleaner) may also be used. Always rinse surface thoroughly and wipe dry.
- Drying is an important step, preventing a build-up of soap film or cleaning residue, which can create the appearance of light scratches over time. In the event this occurs, apply a mild abrasive cleaner to a damp sponge or white Scotch Brite® pad and rub into the surface in a circular motion. When finished, rinse thoroughly to remove all cleaner, then wipe completely dry.
- Stubborn soap film or cleaning residue build-up in Corian® is easily removed with abrasive cleanser and a white Scotch-Brite® pad or a sponge.
- For darker colors, a polish may be used to enhance the shine. For areas where there may be food contact, always use a polish formulated for food contact areas, such as Countertop Magic®. Where food contact is not a possibility, a simple furniture polish may be used. Always follow the manufacturer's instructions for using the polish and for safety concerns.

### Cleaning Agents

Corian® is unaffected by common household and commercial cleaners such as

- Powdered abrasive cleansers (like Comet®)
- Ammonia
- Strong detergents
- Oxalic acid solutions
- Dilute hydrochloric acid solutions
- Dilute trisodium phosphate solutions

***Acid drain cleaners may cause surface damage and should not be used on Corian® solid surfaces.***

### Cigarette Burns, Stubborn Stains

Unlike other surface materials stains or marks caused by cigarettes, alcohol, food, lipstick, hair dye, shoe polish, iodine, marking pens, etc. can be removed by using an abrasive cleanser and a Scotch-Brite® pad.

- If the surface has a **matte finish**, use a **green Scotch-Brite® pad**
- If the surface has a **gloss finish**, use a **white Scotch-Brite® pad**

This type of maintenance will not harm the Corian® surface, and will restore it to "like new" condition.

# DuPont™ Corian® Commercial Care In Use

Surfaces of Corian® can be repaired with no permanent damage. Tough to remove stains, fine scratches, and small cuts can be removed using standard repair techniques.

## Professional repair

Contact DuPont (800.426.7426), or your supplier, for information on how to have your Corian® surfaces professionally restored to their original finish

## Making your own repairs

- To restore a matte finish - use 220 grit sandpaper followed by hard buffing with a green Scotch-Brite® pad in a circular motion.
- To restore a semi-gloss - use the 220 grit sandpaper, followed by 320 grit, followed by 400 grit. Then blend the finish in by using abrasive cleanser and a sponge or rag.
- A high gloss finish is best restored by a professional. Contact your supplier or DuPont.
- If the damage is particularly deep, use a random orbital sander equipped with vacuum dust collection. Start with 120 grit sandpaper first, followed by 180-220 grit. After sanding, a uniform matte finish can be obtained by buffing with a green Scotch-Brite® buffing pad. For a semi-gloss, continue sanding with 320 followed by 400 grit. Then buff with a gray Scotch-Brite® pad.

The impact resistance of Corian® allows it to withstand harsh use without chipping, breaking, or cracking. However, if damaged due to extreme abuse, satisfactory repairs can often be made. Contact DuPont for guidance.

## Preventing Damage

### Avoid Strong Chemicals

Some chemicals are not compatible with Corian®. Avoid surface contact with:

- Strong chlorinated solvents
- Chloroform
- Ketones
- Methylene chloride (paint removers)
- Very strong acids such as concentrated sulfuric and hydrochloric acids
- Acid drain cleaners should not be used.

Surfaces exposed to these agents should be promptly flushed with water. Contact for even a short period of time can cause surface damage, spots, or staining. Follow the recommended repair procedures described above as needed to repair and/or restore the surface to its original condition. Severe damage caused by incompatible chemical contact will require professional repair. Again, contact DuPont, or your supplier for assistance.

While Corian® withstands heat better than most surface materials, do not place hot cookware directly on a Corian® surface. To avoid damage caused by excessive heat:

- Always use a trivet or hot pad under hot cookware
- Always use a trivet with minimum ¼" legs under small electrical appliances such as fryers and cookers

A Corian® surface can be scratched or gouged if used as a cutting or chopping surface for food preparation. Scratches can be repaired, but to avoid the problem, use of a cutting board is highly recommended.

The information contained in this Technical Bulletin is given by E. I. du Pont de Nemours and Company free of charge. It is based upon technical data which DuPont believes to be reliable and is intended for use by persons having knowledge of this technical area at their own discretion and risk. Seller assumes no responsibility for results obtained or damage incurred from the use of this Technical Bulletin either in whole or in part by a buyer of Corian®.

Scotch-Brite® is a registered trademark of the 3M Company. Countertop Magic® is a registered trademark of Magic America Corp. Comet® is a registered trademark of Proctor & Gamble.

Copyright © 2006 DuPont. All rights reserved. The DuPont Oval Logo, DuPont™, The miracles of science™ and Corian® are registered trademarks or trademarks of E. I. du Pont de Nemours and Company or its affiliates.



**corian.**  
SOLID SURFACES





# Water Pump

When parked where a city or R.V. park water supply is available, the motor home should be connected by using a hose connected to the city water connection. The water pump should not be used when the motor home is connected to city water. The Coach House has a potable water tank with a 12-volt DC demand pump connected to the system. The switch for the demand pump is located either in the lavatory or on the main control panel located adjacent to the entry door. The pump should only be turned on when water is needed from the potable holding tank. Do NOT operate the pump dry or when there is no water in the potable water tank.

Drain valves are supplied on the potable water tank and in the water system near the pump to allow draining the system to prevent freezing.

The potable water fill is located on the side of the motor home behind the labeled door. The potable water tank can also be filled from city water pressure. Open a valve to fill fresh (potable) water tank - turn off when tank is full. The location of the valve (on all models) is inside exterior door - drivers side behind rear wheel.





# Insert Shurflo Water Pump Manual Here



# Water Heater Systems



Ford Chassis models are equipped with a 120volt a/c electric / motor aid water heater. The motor aid will automatically heat water when you drive the motor home. The radiator system of the engine helps to heat the water. The 120 volt electric heater can be used while the motor home is parked and hooked up to shore power, or the generator is running.

**Remember to only operate the water heater with water in the system.**





**Insert Water Heater Manual Here**





# Microwave/Convection Oven

The microwave oven is mounted above or beside the refrigerator and only operates on the 120 volt A/C system. This oven can be used as a Convection Oven, or a Microwave oven. Refer to the manufacturers instruction manual, enclosed in this section, for operator instructions and helpful cooking hints.

You can access the manual for your Cuisinart Convection/Microwave Oven at:

<http://www.cuisinart.com/share/pdf/manuals/cmw-200.pdf>





# Monitor Panel

The monitor panel is located in the main control tower inside the motorhome entry door to the right. It will indicate the water level in the potable water tank, the level in the holding tanks, the level of propane gas, and the charge level of the auxiliary batteries. To check the level, push the test button on the panel and observe the level indicator lights that are lit to read the level.





# Sanitizing the Potable Water System

To assure complete sanitation of your potable water system, the following procedures are recommended for a new system, for one that has not been used for a period of time, and for one which may have become contaminated.

- 1) Prepare a chlorine solution using one (1) gallon of water and one-quarter (1/4) cup of household bleach (2% sodium hypochlorite solution). With tank empty pour one (1) gallon of solution into tank for each fifteen (15) gallons of tank capacity.
- 2) Complete filling of tank with fresh water. Operate all faucets to release trapped air. Pressurize the entire system with a pump, if available, and turn off pump.
- 3) Allow to stand for three (3) hours.
- 4) Drain and flush with fresh potable water.
- 5) To remove excessive chlorine taste or odor, which may remain, prepare a solution of one (1) quart vinegar to five (5) gallons of water and pour into tank. Allow solution to agitate in tank by vehicle motion (several days if possible).
- 6) Drain tank and flush with fresh potable water.



# How to Winterize

## Blow Dry Method

- 1) Empty and thoroughly rinse both the black and gray waste holding tanks at a sanitary dump station.
- 2) Drain the fresh water tank. The fresh water tank drain is accessible inside an access panel depending on your model:

220	Under the Bed (Driver's Side)
221 XL	Under the Galley
232 XL	Passenger Side Behind the Wheel Well
261 XL	Driver's Side Behind the Galley
261 XL (Twin Bed)	Passenger Side Under the Bed
261 XL (Sleeper Sofa)	Driver's Side Near the Shower
271 XL	Under the Galley
272 XL	Under the Rear Queen Bed

- 3) Drain all water lines. Drain valves are located behind a hinged panel on the rear of the driver's side of motor home. Be sure to drain shower, toilet and all faucets. If a water purifier or filter is in line, remove the cartridge. Close all faucets.
- 4) Install an R.V. "Blow Out Plug" on your city water inlet. These plugs are inexpensive and are available at R.V. Parts stores or Home Improvement stores (Lowe's, Home Depot)



R.V. Blow Out Plug

- 5) Set your air compressor to 30 psi, with a maximum air pressure of 50 psi, and start blowing air into the water inlet. While your compressor is blowing air into your water lines, walk around your RV and open up water valves, one at a time, to blow the water out from the lines. When the water has been blown out then close the valve and move on to the next water opening. (Con't)...

# How to Winterize

- 5) (Con't) Remember to flush the toilet. Don't forget the shower head and the outside shower if you have one. Don't forget to open up both the hot water line and the cold water line. Once you have done each and every fixture in the rig, you should have most of the water out of your freshwater system. Remove the air source and bleed off any remaining pressure by opening a faucet.
- 6) Technically at this point, your RV has been winterized. However, if you wish to absolutely make sure your water lines are protected you can perform the following. The reason for putting antifreeze through your lines is in case any water collects at low levels of your water lines and freezes. This could be enough to blow a line. Putting RV antifreeze through your lines will eliminate this from being an issue.

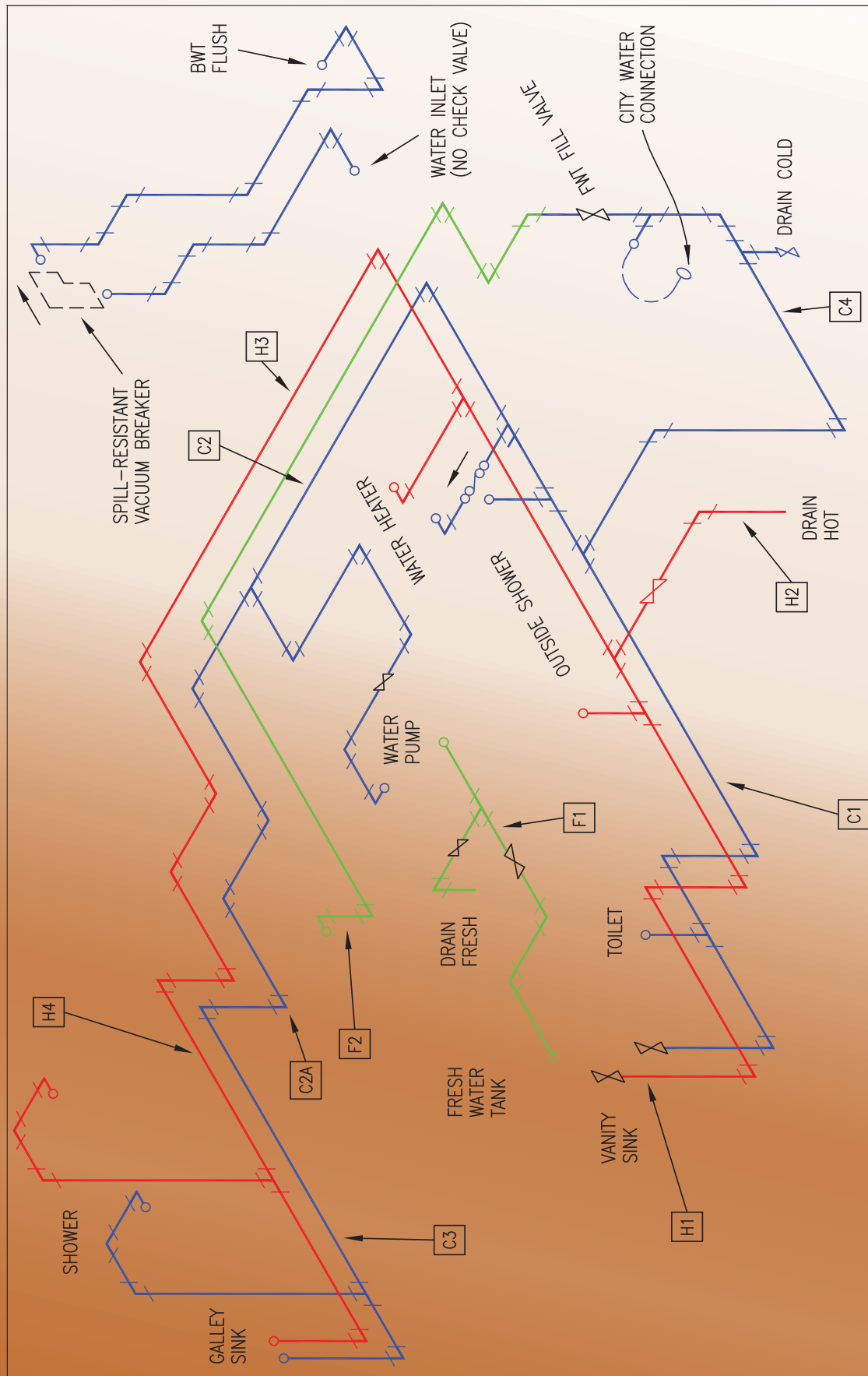
- 7) Pour 2-3 Gallons of antifreeze in the City Water Fill outlet which is located on the side of your motorhome.



- 8) Turn on the R.V. water pump which will pull the antifreeze out of the fresh water tank and into the system. Open each fixture, allowing it to flow until you see pure antifreeze. Monitor the level in the antifreeze bottle and make sure it doesn't run dry. Remember to flush the toilet and operate the toilet sprayer if installed. Don't forget the shower head and the outside shower if you have one. Once you have done each and every fixture in the rig, you should have protection against freezing pipes in your water system.
- 9) Once you have the RV parked in it's final storage spot for the winter, pour some RV antifreeze down each drain to protect the trap. Open the toilet flush valve and allow about one quart (4 cups) of antifreeze to flow into the black water tank. Close the toilet flush valve and pour a little antifreeze into the toilet bowl. Pour about one quart (4 cups) down the shower drain to flow into the grey water tank.



# Water Systems Diagrams



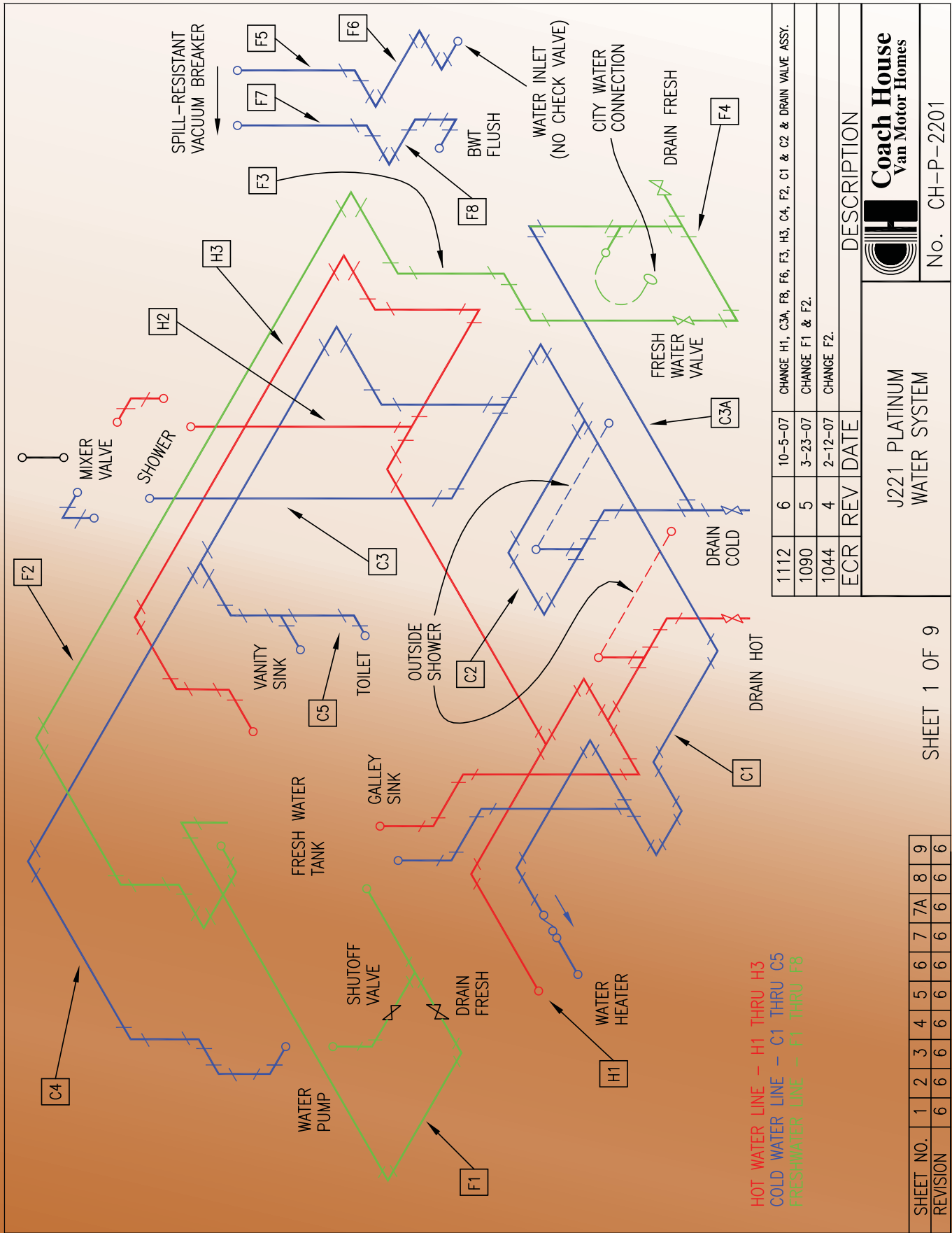
1549	4	3-17-15	REVISE H1, H3, H4, C1, C2, C2A, C3.
1517	3	2-4-14	UPDATE LENGTHS FOR SHOWER, FWT & WATER PUMP. ADD SHEET 4A.
ECR	REV	DATE	DESCRIPTION

**S220 PLATINUM**  
**WATER SYSTEM**

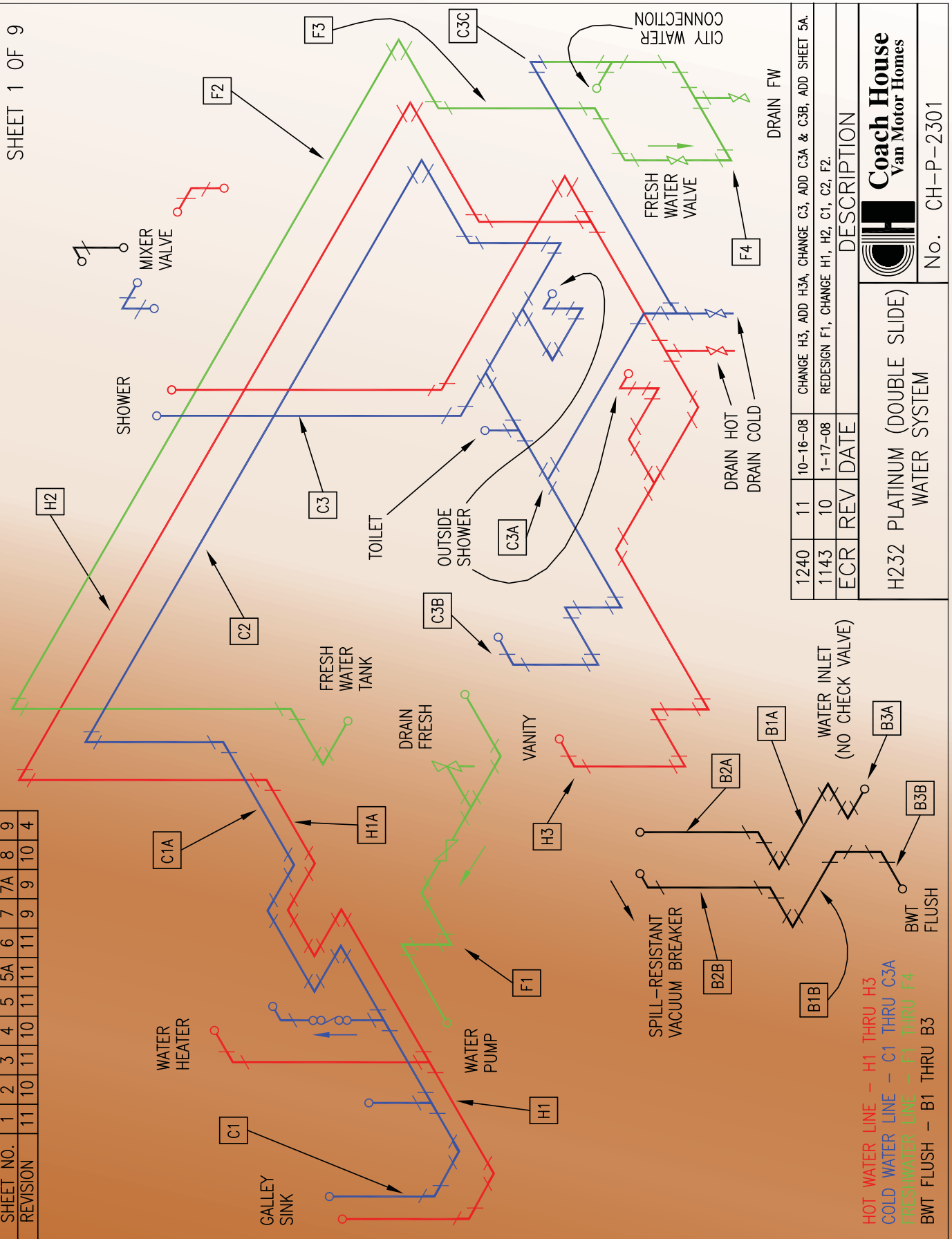
No. CH-P-2202

HOT WATER LINE - H1 THRU H4  
COLD WATER LINE - C1 THRU C8  
FRESHWATER LINE - F1 THRU F2

SHEET NO.	1	2	3	4	4A	5	6	7
REVISION	4	4	4	4	4	4	2	3



SHEET NO.	1	2	3	4	5	6	7	8	9
REVISION	11	10	11	10	11	11	9	10	4

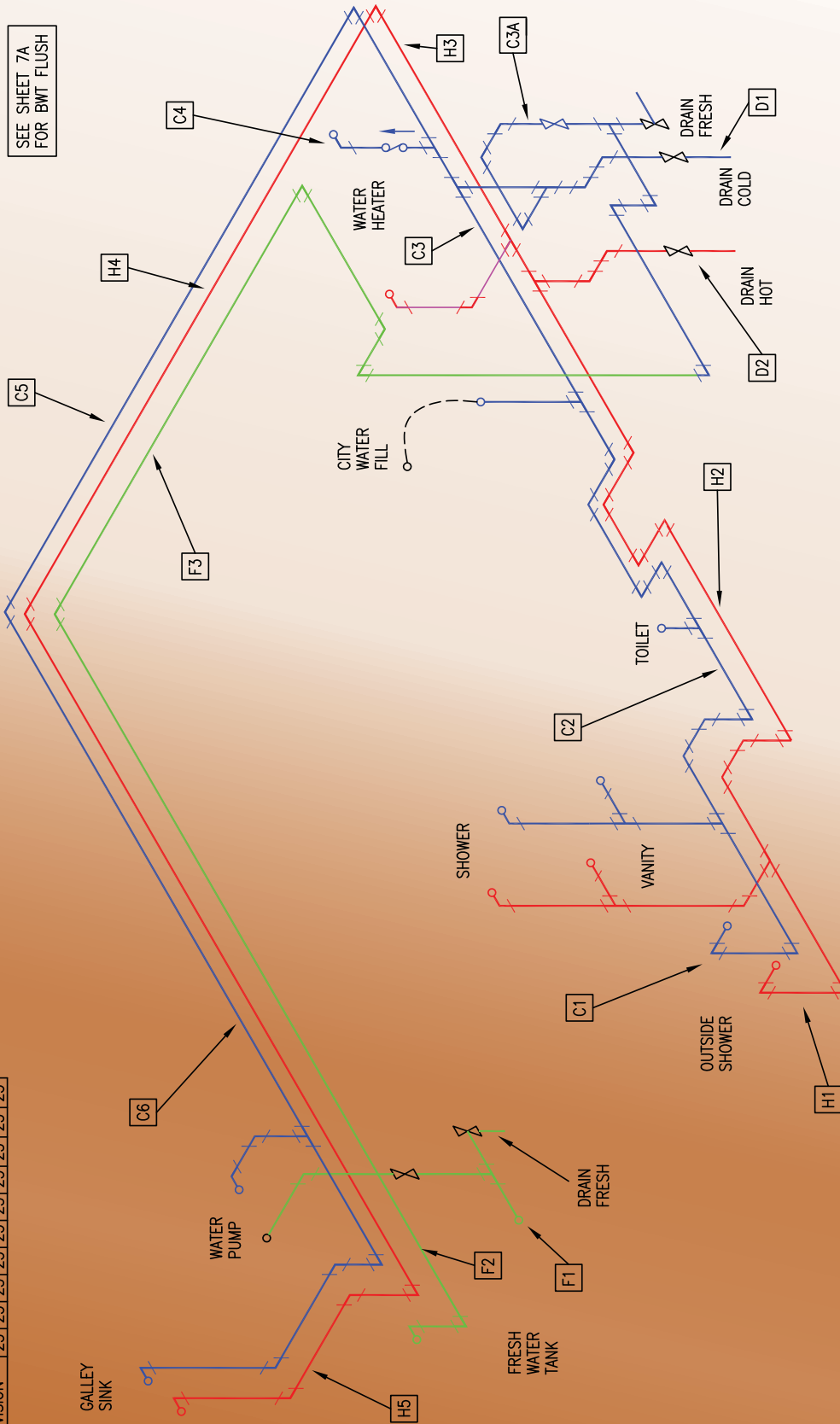


ECR	REV	DATE	DESCRIPTION
1240	11	10-16-08	CHANGE H3, ADD H3A, CHANGE C3, ADD C3A & C3B, ADD SHEET 5A.
1143	10	1-17-08	REDESIGN F1, CHANGE H1, H2, C1, C2, F2.

H232 PLATINUM (DOUBLE SLIDE)			No. CH-P-2301
WATER SYSTEM			

SHEET NO.	1	2	3	3A	4	5	5A	6	7	7A
REVISION	23	23	23	23	23	23	23	23	23	23

SEE SHEET 7A  
FOR BWT FLUSH



HOT WATER LINE - H1 THRU H5  
COLD WATER LINE - C1 THRU C6  
FRESHWATER LINE - F1 THRU F3

1325	23	5-18-10	MAKE MODEL G SAME AS MODEL K EXCEPT FOR BWT FLUSH.
ECR	REV	DATE	DESCRIPTION
G272 PLATINUM WATER SYSTEM			Coach House Van Motor Homes
No. CH-P-2801			

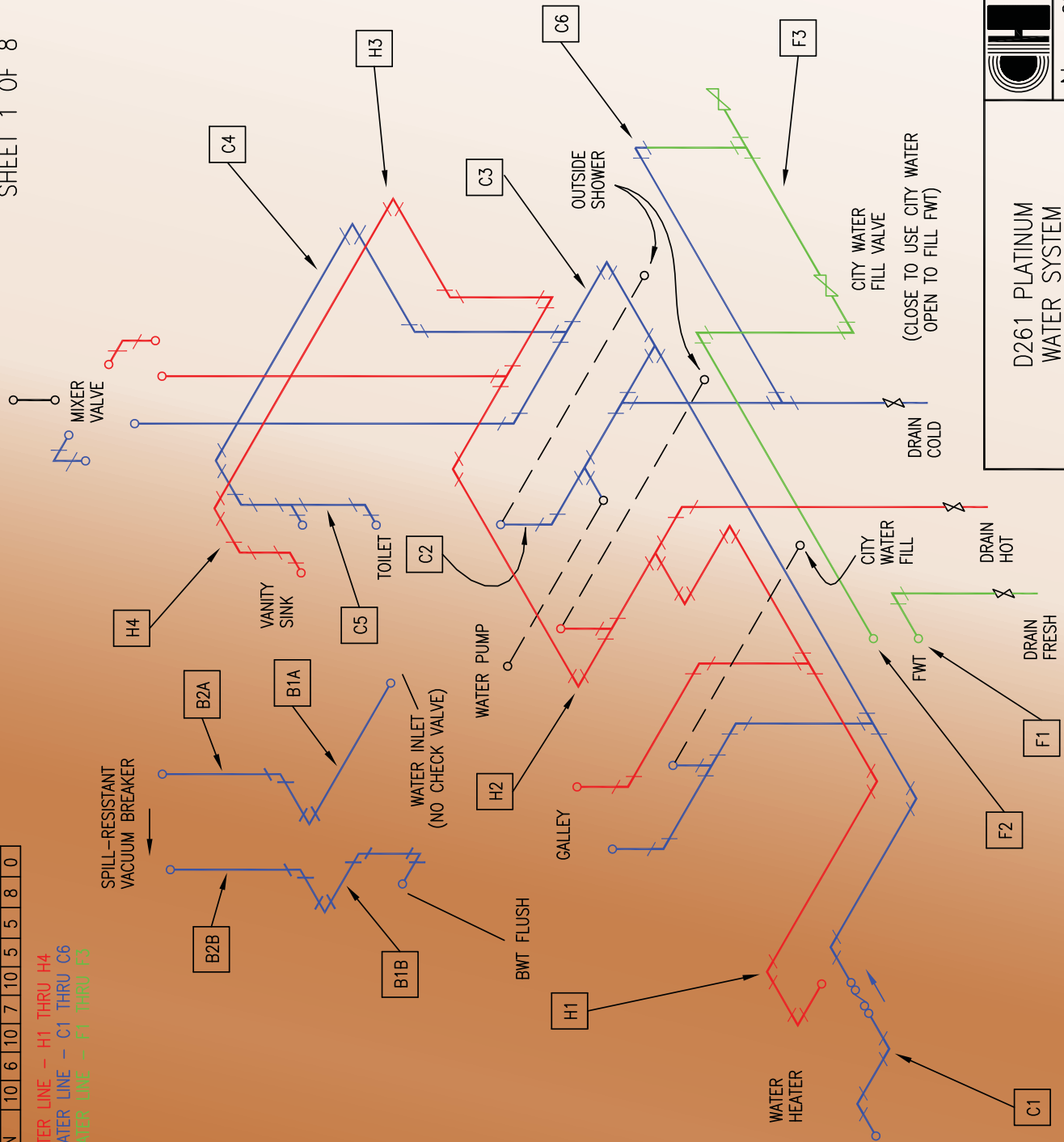
SHEET 1 OF 7

ALL DIMENSIONS ARE IN INCHES

SHEET NO.	1	2	3	4	5	6	7	7A	8
REVISION	10	6	10	7	10	5	5	8	0

HOT WATER LINE - H1 THRU H4  
COLD WATER LINE - C1 THRU C6  
FRESHWATER LINE - F1 THRU F3

SHEET 1 OF 8



ECR	REV	DATE	DESCRIPTION
1089	10	7-23-30	CHANGE C4 & H4.
0976	9	8-31-06	CHANGE C3 & H3.
0949	8	5-17-06	ADD BWT FLUSH TO SHEET 1 & 7A.
0775	7	5-3-05	UPDATE C1.
0751	6	3-16-05	UPDATE C1 & H1.
0735	5	2-25-05	REVISE CITY WATER FILL.

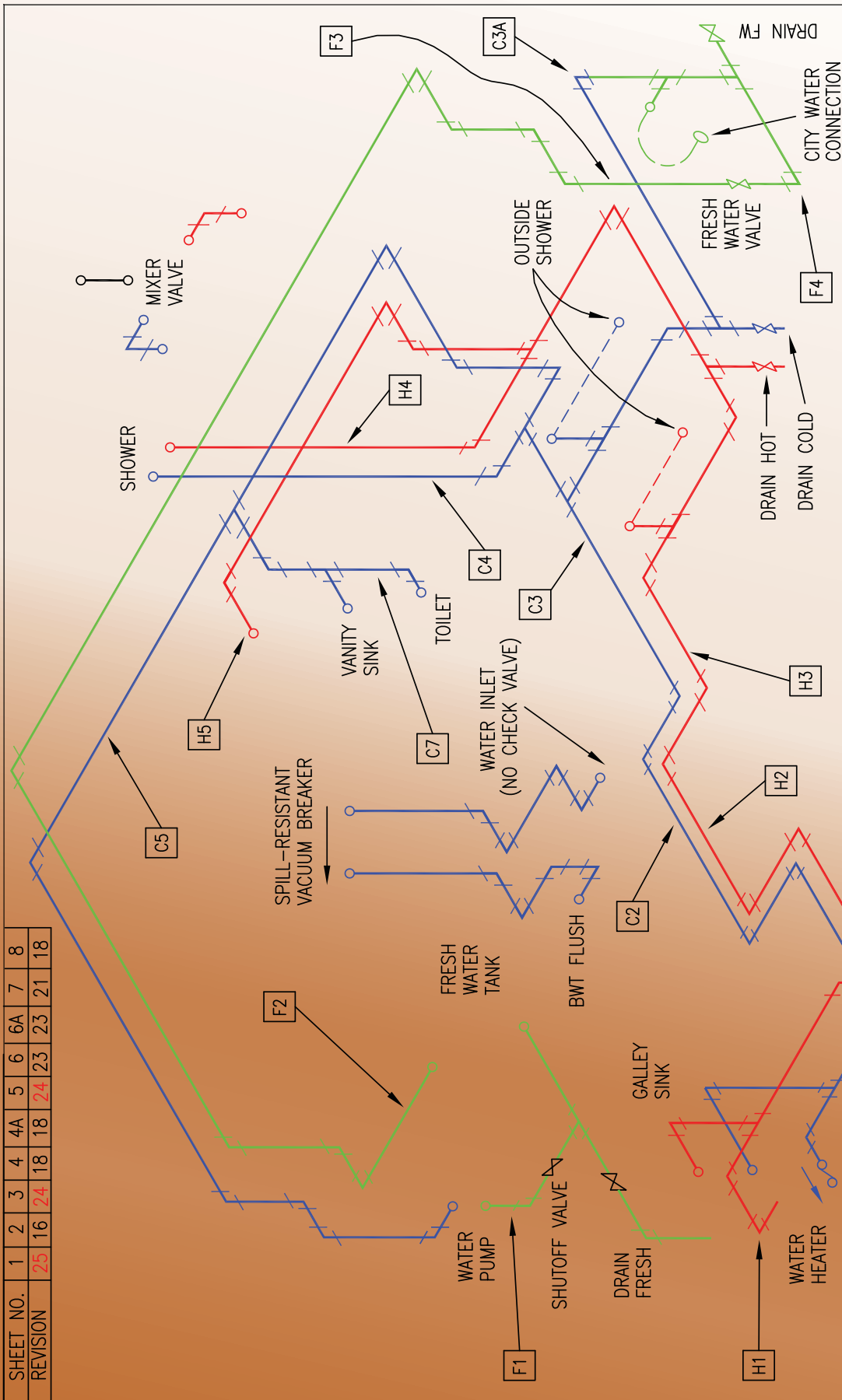
**Coach House**  
Van Motor Homes

No. CH-P-2601


D261 PLATINUM  
WATER SYSTEM



SHEET NO.	1	2	3	4	4A	5	6	6A	7	8
REVISION	25	16	24	18	18	24	23	23	21	18



1017	25	12-4-06	DELETE C6 PART OF C5.
0956	24	7-5-06	REVISE H4 & C4.
0949	23	5-16-06	ADD BWT FLUSH TO SHEET 1 & 6A, MOVE MIXER VALVE TO SHEET 6.
ECR	REV	DATE	DESCRIPTION

231 PLATINUM WATER SYSTEM (NEW SLIDE-OUT)	 <b>Coach House</b> Van Motor Homes
No. CH-P-0007	

HOT WATER LINE - H1 THRU H7  
COLD WATER LINE - C1 THRU C8  
FRESHWATER LINE - F1 THRU F2

SHEET 1 OF 8

ALL DIMENSIONS ARE IN INCHES