

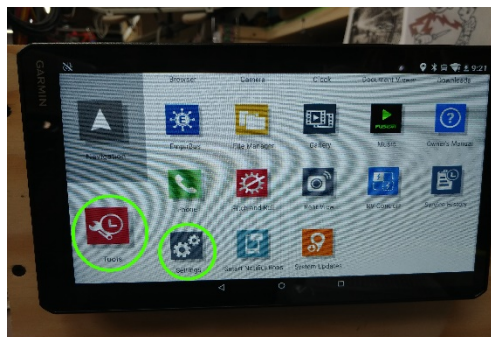
# GARMIN UPDATE INSTRUCTIONS AND S.W.C. INITIALIZATION GUIDE.

WARNING THIS PROCEDURE REQUIRES RELIABLE WI-FI SIGNAL!!

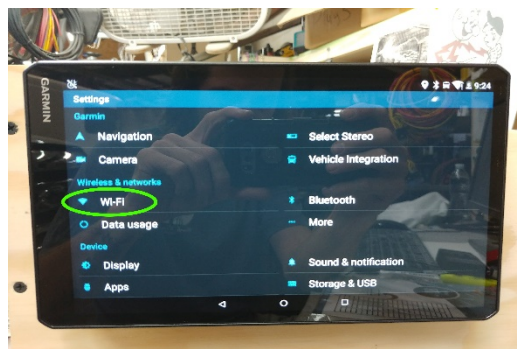
STEP 1. FROM HOME SCREEN PUSH ICON WITH 3 PARALLEL DOTS (SEE FIG. 1)



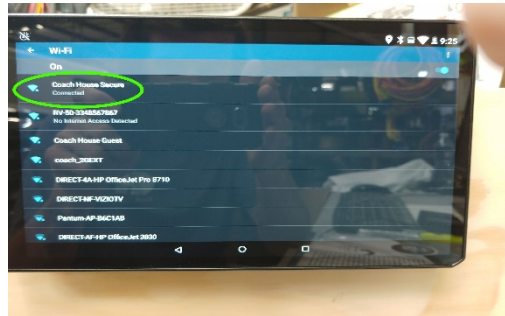
STEP 2. NAVIGATE TO TOOLS MENU AND SELECT SETTINGS (SEE FIG. 2)



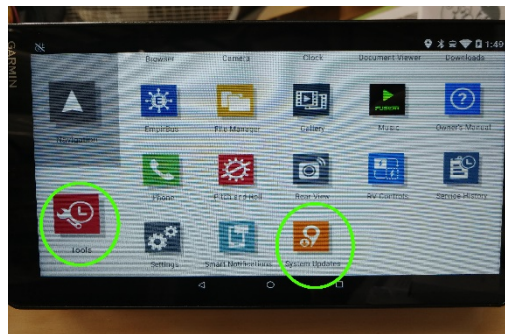
STEP 3. UNDER SETTINGS SELECT WI-FI OPTION (SEE FIG. 3)



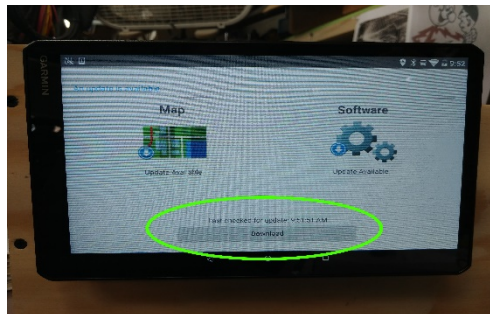
STEP 4. NOW LOGIN TO YOUR WI-FI (SEE FIG. 4)



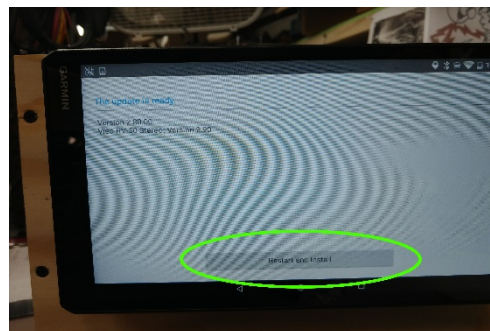
STEP 5. NOW NAVIGATE BACK TO TOOLS-> SELECT SYSTEM UPDATES (SEE FIG. 5)



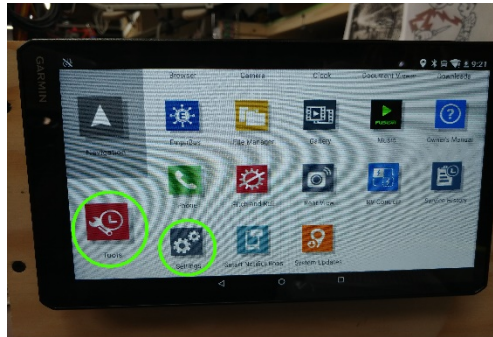
STEP 6. SELECT DOWNLOAD BUTTON AT BOTTOM OF SCREEN (SEE FIG. 6)



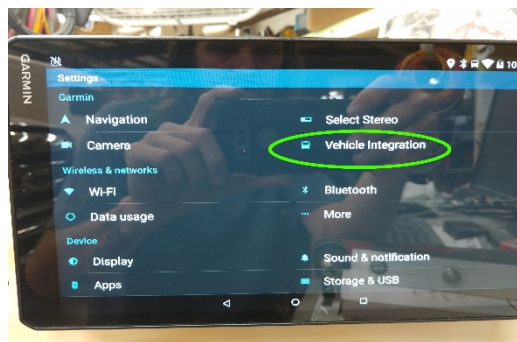
STEP 7. AFTER SYSTEM HAS UPDATED YOU WILL BE PROMPTED RESTART AND INSTALL UPDATE (SEE FIG. 7)



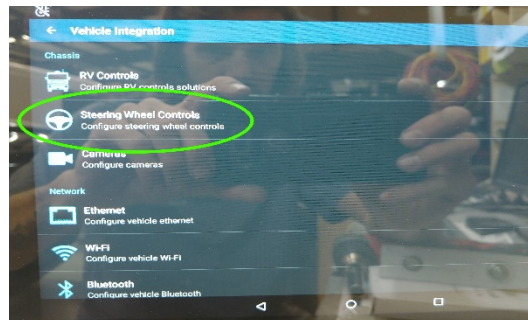
STEP 8. AFTER SYSTEM RESTARTS NAVIGATE TO TOOLS-> SETTINGS (SEE FIG. 8)



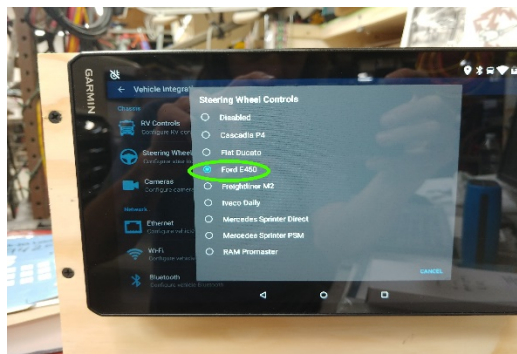
STEP 9. SELECT VEHICLE INTEGRATION (SEE FIG. 9)



STEP 10. UNDER THE VEHICLE INTEGRATION MENU SELECT STEERING WHEEL CONTROLS (SEE FIG. 10)



STEP 11. ON DROP DOWN MENU SELECT "FORD E450" (SEE FIG. 11)



STEP 12. UNDER THE VEHICLE INTEGRATION MENU SCROLL TO THE BOTTOM AND SELECT  
RESTART (SEE FIG. 12)

