

# VILANO

2 0 1 9

W A K E U P A N Y W H E R E





VILANO



*"We're a family company that is always trying to find out the needs of our customers. It's that simple."*

*- Bob, Van & Leigh Tiffin*



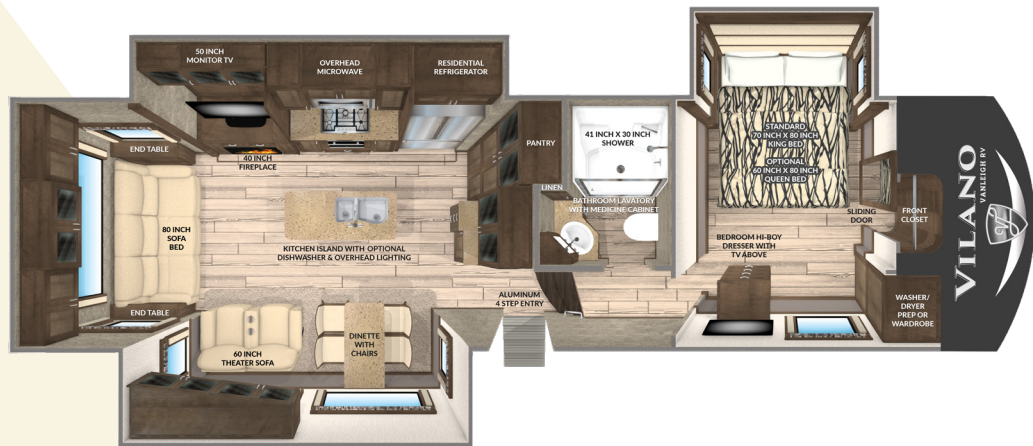
**VANLEIGH**  
— BUILT AROUND YOU —

We understand that you have many options to consider when purchasing a new RV and we thank you for taking the time to consider ours. Our family has been in the RV manufacturing industry for over 40 years. The Vanleigh team gets to work well before dawn every morning with one goal in mind, to create the best built product in the marketplace. We believe in building a product that we would want to RV in, whether it's for a weekend getaway or a yearlong hiatus. That's why every Vanleigh RV is made knowing that our customer's journey is their home.





**320GK** VILANO GOURMET KITCHEN



STANDARD  
SOLID WOOD  
Cabinetry

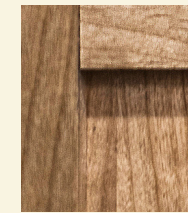
FOR MORE INFORMATION GO TO: [vanleighrv.com](http://vanleighrv.com)



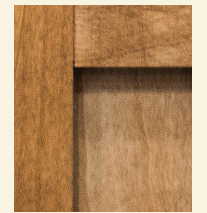
All of our wood cabinetry is made of solid wood and is manufactured on-site in the VanLeigh Cabinet Shop.



Mocha

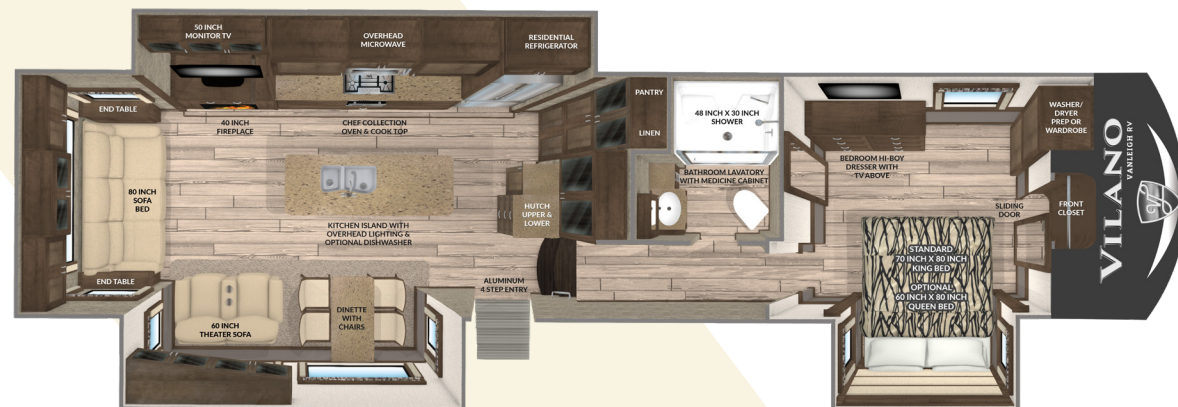


Amber Glaze

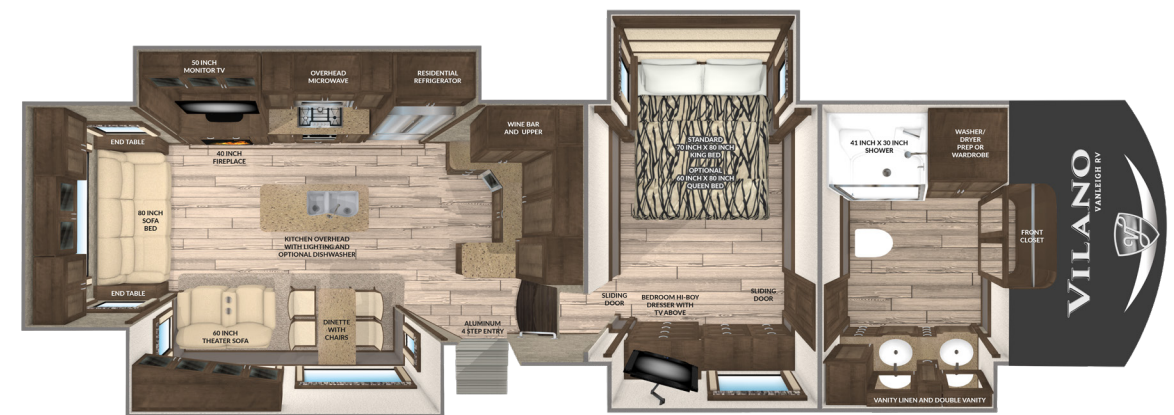


English Chestnut

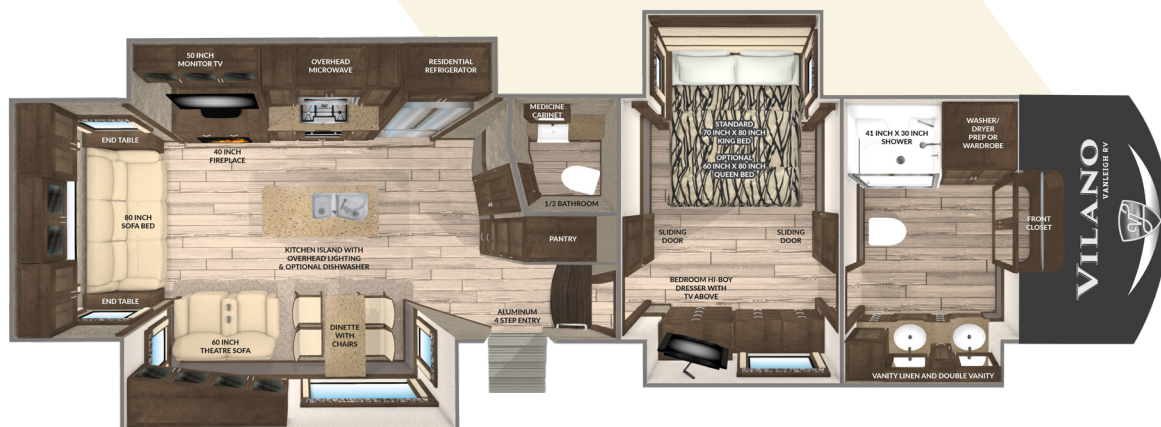
**360RL** VILANO REAR LIVING



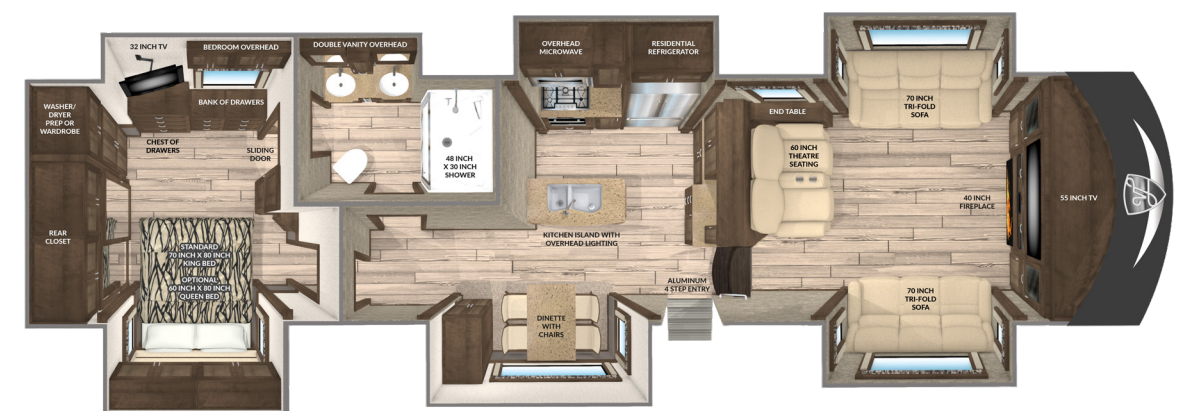
**370GB** VILANO GRAND BAR



**369FB** VILANO FRONT BATH & HALF

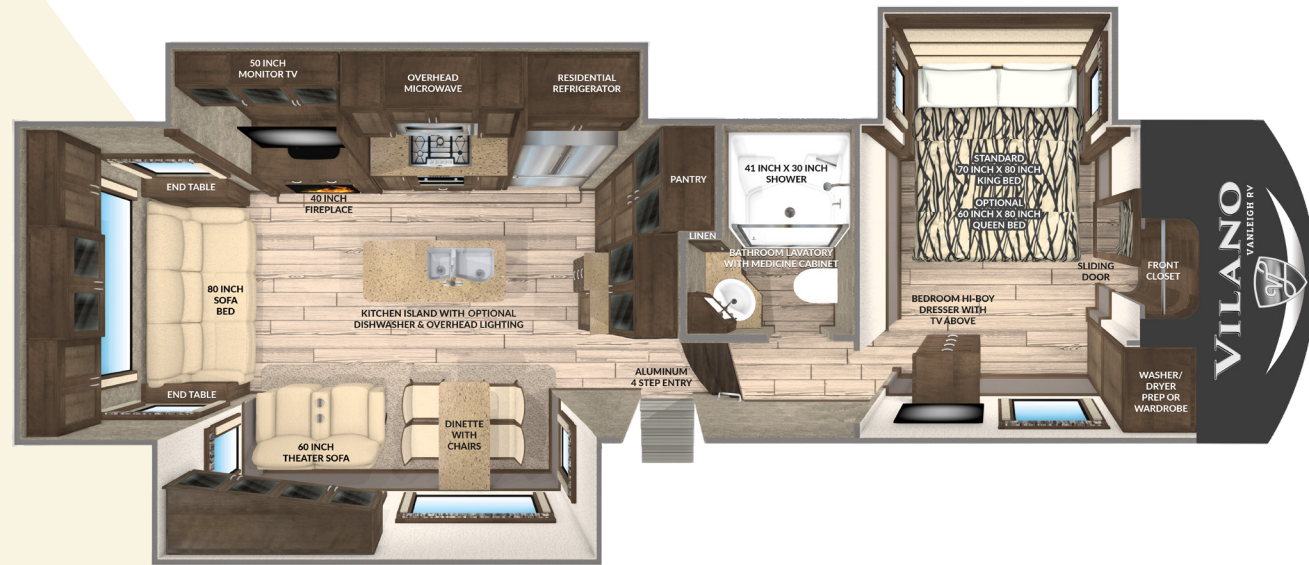


**375FL** VILANO FRONT LIVING





**320GK** VILANO GOURMET KITCHEN



320GK view of the spacious rear living kitchen area with 18 cu. ft. stainless French Door refrigerator

SPECIFICATIONS

GVWR 16,000  
 Dry Weight 12,400\*  
 Cargo Carrying 3,600  
 Width 101"  
 Height 12' 11" \*\*  
 Length 34' 11" \*\*\*  
 Fresh Water Cap. 70 gal

Grey Water Cap. 90 gal  
 Black Water Cap. 45 gal  
 Water Heater 10 gal  
 Furnace 42K BTU  
 LP Cap. 60 lbs  
 Hitch Weight 2,600\*\*\*

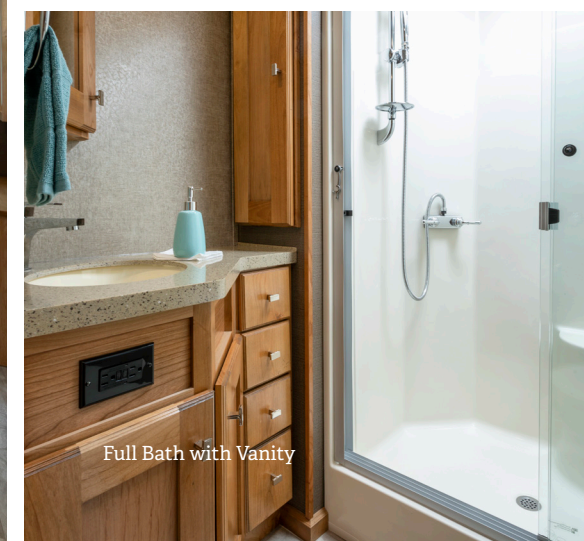
\* unloaded and based off of an average  
 \*\* to top of A/Cs  
 \*\*\* from pinbox to rear ladder based on standard build, no options  
 \*\*\*\* unloaded and based off of an average



Living area with Amber Glaze Cabinetry and theater seating



Master Suite w/ Standard King Bed



Full Bath with Vanity

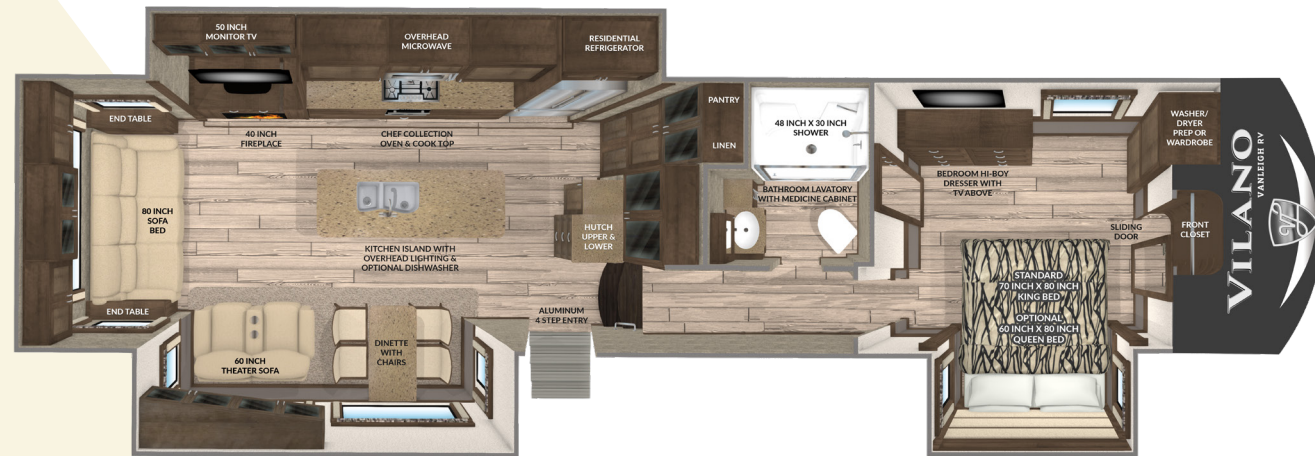


From the triple slide outs to the island with an optional dishwasher there are plenty of comforts throughout the 320 Gourmet Kitchen.

Inside, you'll enjoy solid surface kitchen countertops, residential features like a kitchen faucet with pull-down sprayer, a three burner range and an 18 cu. ft. stainless French Door refrigerator.



360RL VILANO REAR LIVING



SPECIFICATIONS

GVWR 16,000  
 Dry Weight 13,800\*  
 Cargo Carrying 2,200  
 Width 101"  
 Height 12' 11" \*\*  
 Length 39' 11" \*\*\*  
 Fresh Water Cap. 70 gal

Grey Water Cap. 90 gal  
 Black Water Cap. 45 gal  
 Water Heater 10 gal  
 Furnace 42K BTU  
 LP Cap. 60 lbs  
 Hitch Weight 2,800\*\*\*\*

\* unloaded and based off of an average  
 \*\* to top of A/Cs  
 \*\*\* from pinbox to rear ladder based on standard build, no options  
 \*\*\*\* unloaded and based off of an average



The all new 360 Rear Living has the most counter space of any Vilano, along with a spectacular 72" view above the Residential Chef Range.

We've also moved the bed to door-side in the bedroom, to create even more space to relax and move around.



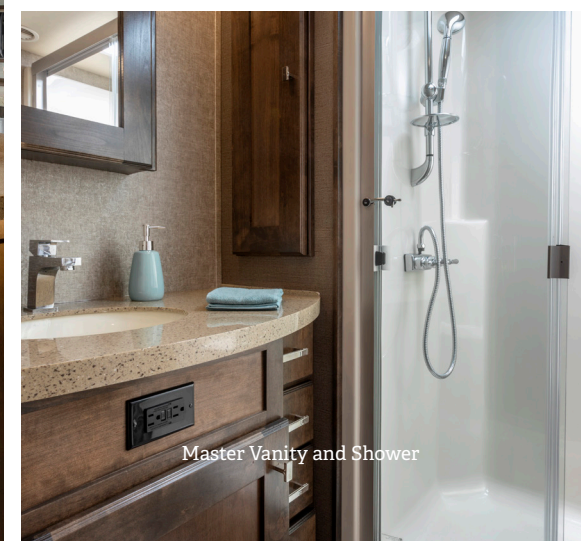
360RL Mocha Wood Cabinetry | 72" Window View above the Residential Chef Range | Maximum Counter Space



Kitchen and Living Area



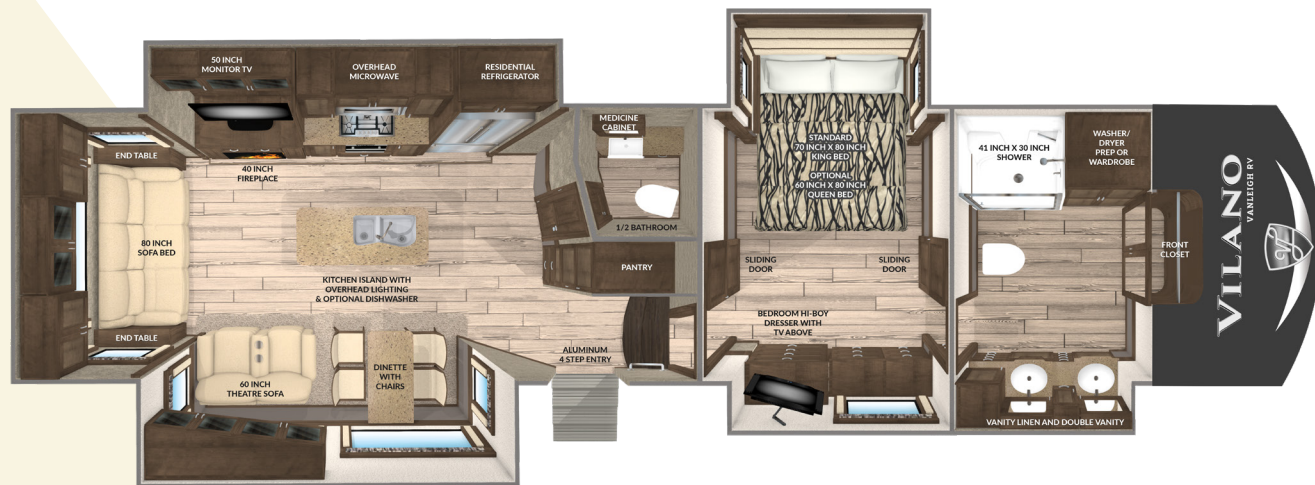
Door-Side Bed in the Master Suite Provides additional space



Master Vanity and Shower



**369FB** VILANO FRONT BATH & HALF



**SPECIFICATIONS**

GVWR 16,000  
 Dry Weight 14,100\*  
 Cargo Carrying 1,900  
 Width 101"  
 Height 12' 11" \*\*  
 Length 38' 11" \*\*\*  
 Fresh Water Cap. 70 gal

Grey Water Cap. 90gal  
 Black Water Cap. 45gal  
 Water Heater 10gal  
 Furnace 42K BTU  
 LP Cap. 60lbs  
 Hitch Weight : 3100\*\*\*\*

\* unloaded and based off of an average  
 \*\* to top of A/Cs  
 \*\*\* from pinbox to rear ladder based on standard build, no options  
 \*\*\*\* unloaded and based off of an average



The 369 Front Bath features several at-home comforts that will keep you focused on fun all season long! Enjoy one and a half baths, a kitchen island, a residential 18 Cu. Ft. stainless refrigerator and fireplace.



369FB Mocha Wood Cabinetry | Window View above the Residential Chef Range | Half Bathroom



369FB features a Front Bath & 1/2 | Mocha Wood Cabinetry  
 Pebble Furniture



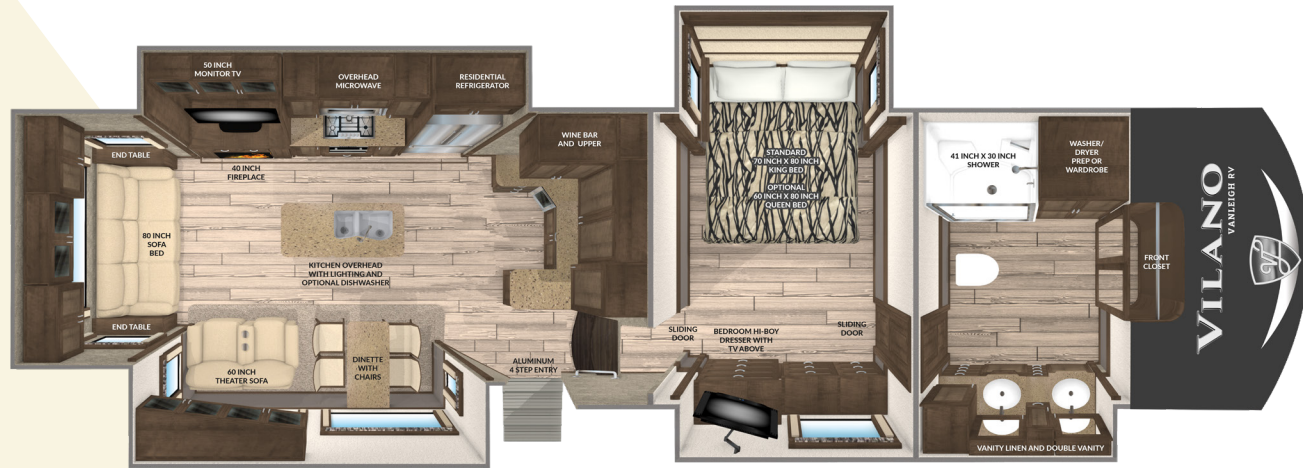
Master Suite w/ Standard King Bed



Master Dual Vanity and Shower



**370GB** VILANO GRAND BAR



**SPECIFICATIONS**

GVWR 16,000  
 Dry Weight 14,000\*  
 Cargo Carrying 2,000  
 Width 101"  
 Height 12' 11" \*\*  
 Length 38' 11" \*\*\*  
 Fresh Water Cap. 70 gal

Grey Water Cap. 90gal  
 Black Water Cap. 45gal  
 Water Heater 10gal  
 Furnace 42K BTU  
 LP Cap. 60lbs  
 Hitch Weight : 3100\*\*\*\*

- \* unloaded and based off of an average
- \*\* to top of A/Cs
- \*\*\* from pinbox to rear ladder based on standard build, no options
- \*\*\*\* unloaded and based off of an average



*The 370 Grand Bar gives you plenty of counter space to entertain comfortably, with a deep buffet area with a built-in cooler.*

*The solid hardwood cabinetry, plenty of extra storage space and luxury amenities make the 370GB perfect for the full-timer.*



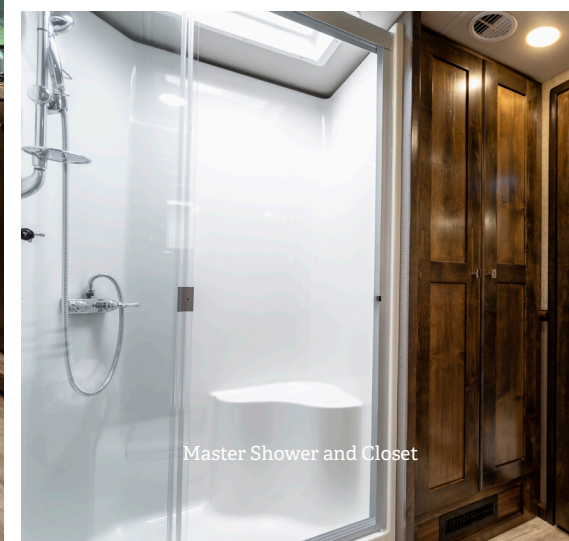
370GB view of the spacious front living area with Mocha Cabinetry and the Grand Bar Buffet Counter



Living area with 50" Furrion flat screen TV



Master Suite w/ Standard King Bed



Master Shower and Closet



**375FL** VILANO FRONT LIVING



SPECIFICATIONS

GVWR 16,500  
 Dry Weight 14,800\*  
 Cargo Carrying 1,700  
 Width 101"  
 Height 12' 11" \*\*  
 Length 40' 6" \*\*\*  
 Fresh Water Cap. 54 gal

Grey Water Cap. 90 gal  
 Black Water Cap. 45 gal  
 Water Heater 10 gal  
 Furnace 42K BTU  
 LP Cap. 60 lbs  
 Hitch Weight 3,300\*\*\*\*

\* unloaded and based off of an average  
 \*\* to top of A/Cs  
 \*\*\* from pinbox to rear ladder based on standard build, no options  
 \*\*\*\* unloaded and based off of an average



375FL view of the spacious front living area with opposing couches, and 55" Furrion flat screen TV



Kitchen w/Amber Glaze Cabinetry, and Residential 18cuft Whirlpool Refrigerator



Master Suite w/ Standard King Bed



Full Bath w/ Dual Vanity



*The 375 Front Living puts entertainment and relaxation right up front! With two full couches and a love seat, the 375FL provides more than enough space and comfort to watch the game with friends and family.*

*The Kitchen and Master Suite provide all the same luxury amenities you expect from Vanleigh.*



## LIVING AREA

- Full Profile Ceiling Throughout
- Full Overlay Hardwood Cabinetry and Faceframes
- Hardwood Slide-Out Fascia Throughout
- Hardwood Window Valances Throughout
- 8'0" Main Floor Slideout Boxes
- Multiplex Wiring System w/ Digital Homescreen
- Soft Touch Padded Vinyl Ceiling Throughout
- Recessed LED Ceiling Lighting Throughout
- 3' x 5' Solid Wood Overhead Light Box
- Roller Shades (Night)
- Dimming Function on Living and Bedroom Area Lighting
- High Quality Residential Franklin Furniture, Made in the U.S.A.
- Ceiling Fan
- Dirt Devil Central Vac System

## KITCHEN

- Solid Surface Kitchen Countertops
- Solid Surface Sink and Range Covers
- Residential Kitchen Faucet with Pull Down
- Stainless Steel Microwave and Oven
- Residential Chef Collection Burner Range
- 18 Cu Ft. Samsung French Door Refrigerator
- 1,000 Watt Pure Sine Wave Inverter
- Stainless Drawer Guides
- Freestanding, Solid Surface Dinette Table with 4 Chairs
- New Galley Window Featured in all Vanleigh Floorplans
- Oversized 70/30 Stainless Steel Sink
- Galley Area Air Automatic Ceiling Vent
- Hardwood Ceiling Décor Package with Recessed LED Lighting
- Hand Laid Tile and Grout Backsplashes
- Convection Microwave
- Residential Kitchen Faucet with Pull-Down Sprayer

## HOME ENTERTAINMENT

- 50 in LED TV in Living Area (55" LED TV in the 375FL Living Area)
- Sound Bar with Surround Sound in Living Area
- Entertainment Center with Bluetooth, DVD, Aux Controls
- Exterior Speakers
- 32" LED Bedroom TV
- PreWire for Solar Panels
- King Jack Digital Antennae

## BEDROOM

- 70" x 80" King Cool Mattress
- Dual USB Ports in Nightstands
- Backlit Handrail to Bedroom
- Solid Vinyl Flooring Throughout Bedroom
- Hardwood Window Valances
- Residential Hardwood Headboard
- Hardwood Dresser
- Full Sized Wardrobe with Motion Sensored Lighting
- Full-Sized Underbed Storage Area

## HEATING AND COOLING

- Dual 15 K BTU Air Conditioners
- Prewire for Third 15K BTU A/C with Triple Zone Thermostat
- 42K BTU Furnace
- 40" backlit 7200 BTU fireplace
- R-45 Floor and Roof Insulation
- Whisper Quiet A/C System
- Fully Enclosed and Heated Underbelly with Heat Return
- 12V Electric Tank Heaters
- 10 Gallon Gas/Electric Quick Recovery Hot Water Heater
- 16" Wide Return A/C Ducts for Max Airflow

## EXTERIOR AND CONSTRUCTION

- Noble T60 High Gloss Fiberglass Exterior
- Tubular Aluminum Framed Sidewalls
- 12V Electric Dump Gates for Black and Gray Tank with Manual Override
- 16" on Center Tubular Aluminum Floor
- 16" on Center Aluminum Roof Joists
- Framed, Laminated, and Insulated Slide Box Floors and Ceilings
- Laminated Slide Box End Walls
- Aluminum A/C Boxes Welded to Frame
- Roof Backer For All Crown Molding
- Tubular Aluminum Upper Support Wall
- Dual Copper Water Manifolds
- Powdercoated Aluminum Wet-Bay
- Standard "C" Rated Tires
- Labeled Wire Harnesses
- Protective Wire Looms
- LED Exterior Lighting System
- Pre-Wire for Backup Camera
- Slam-Latch Baggage Doors
- Motion Sensored Lighting in Pass Thru Compartment
- Electric Power Cord Reel

## OPTIONAL EQUIPMENT

- Generator Prep
- 5.5 Onan Marquis Gold LP Generator w/ Prep
- Truma "On-Demand" Water Heater
- Pre-Wire for Traveler Satellite
- Residential Dishwasher (excluding the 375FL)
- Splendide Front Load Washer & Dryer
- 3rd 15K BTU Low Profile A/C
- Heat Pump (per A/C)
- Second Awning Mounted to Slidebox
- Dual Pane Windows
- Solar Shades (Day Shades)
- 4 Door Gas/Electric RV Refrigerator
- Queen Bed
- Ultra Sheen Cabinet Finish

Some interior furnishings not included. Some photos shown in literature have optional equipment. All options may not be available in every model. Because of progressive improvements, specifications, standard and optional equipment are subject to change without notice or obligation. For a complete and up-to-date list of available options and specifications, as well as Vanleigh's full line of RVs, visit [vanleighrv.com](http://vanleighrv.com).

## FOR MORE INFORMATION GO TO:

[vanleighrv.com](http://vanleighrv.com)







— BUILT AROUND YOU —

We've always prided ourselves in putting our owners first. To build the best product and service it, with the same quality and care. It's at the core of who we are. We appreciate your consideration of Vanleigh.

— Bob, Van and Leigh Tiffin

All Warranties are not created equal.



See why ours stand the test. At Vanleigh, building a quality coach is our primary focus. Our warranty reflects our confidence in the construction of our unit. From the beginning phases of production we have pressurized water on our units. Throughout our production process we run systems checks on every component in the RV. Once your RV is completed it is taken outside to our onsite campground where it is hooked up to full services and put through an additional PDI inspection. We are proud to offer this accountability to our customers along with the following basic limited warranties:

**3 Year Construction Warranty:**

The structure of the welded frame of the RV is warranted for 3 years (36 months)

**1 Year Base Limited Warranty:**

Your coach has a limited warranty against defects in materials and workmanship for 12 months of ownership

**Ongoing Owner Support**

Vanleigh is proud to offer exceptional customer support. E-mail us at [customercare@vanleighrv.com](mailto:customercare@vanleighrv.com) or call us at 662-612-4040. We build our units with tested and proven components. Many of these components carry their own respective warranties. Please see owner's manual for the warranties of components.







— BUILT AROUND YOU —



**VANLEIGH**

26 Industrial Drive | Burnsville, MS 38833  
Phone 662-612-4040 | Fax 662-655-0913  
customer@vanleighrv.com · www.vanleighrv.com



**TIFFIN**  
MOTORHOMES

YOUR LOCAL VANLEIGH RV DEALER: