

# RIVERSTONE

LUXURY FIFTH WHEELS





**39RKFB**

**MAPLE HONEY CABINETS  
& BULLSEYE BOURBON  
FURNITURE**

## 39RKFB

# COUPLES PARADISE. A SPOT FOR EVERY THING.

The 39RKFB is a couple's paradise. This rear kitchen floorplan offers all the comforts of home on the road. This floorplan boasts 1.5 Baths with a large master en suite with walk in closet. The second bathroom is easily accessible for visiting guests or while on the road to your next destination.

### WEIGHTS & MEASURES

**3,084**  
HITCH

**16,292**  
UVW

**2,792**  
CARGO CAP.

**42' 7"**  
EXT. LENGTH

**13' 4"**  
EXT. HEIGHT

**79F · 80B · 80G**  
TANKS: FRESH, BLACK, GRAY





442MC

DECORATOR WHITE CABINETS  
& BULLSEYE BOURBON  
FURNITURE

442MC

# REAR DEN. THE PERFECT MAN-CAVE

The 442MC "The Man Cave" offers a perfect space to not only relax and unwind but a dedicated space for all of your overnight guests. A rear entertainment room that also doubles as a 2nd bedroom in a pinch. This floorplan offers our take on what a bunk room should be without the wasted space and compromise.

### WEIGHTS & MEASURES

**2,820**  
HITCH

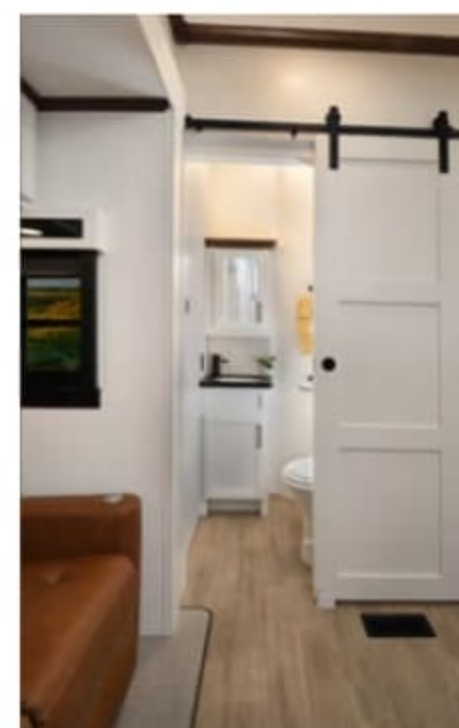
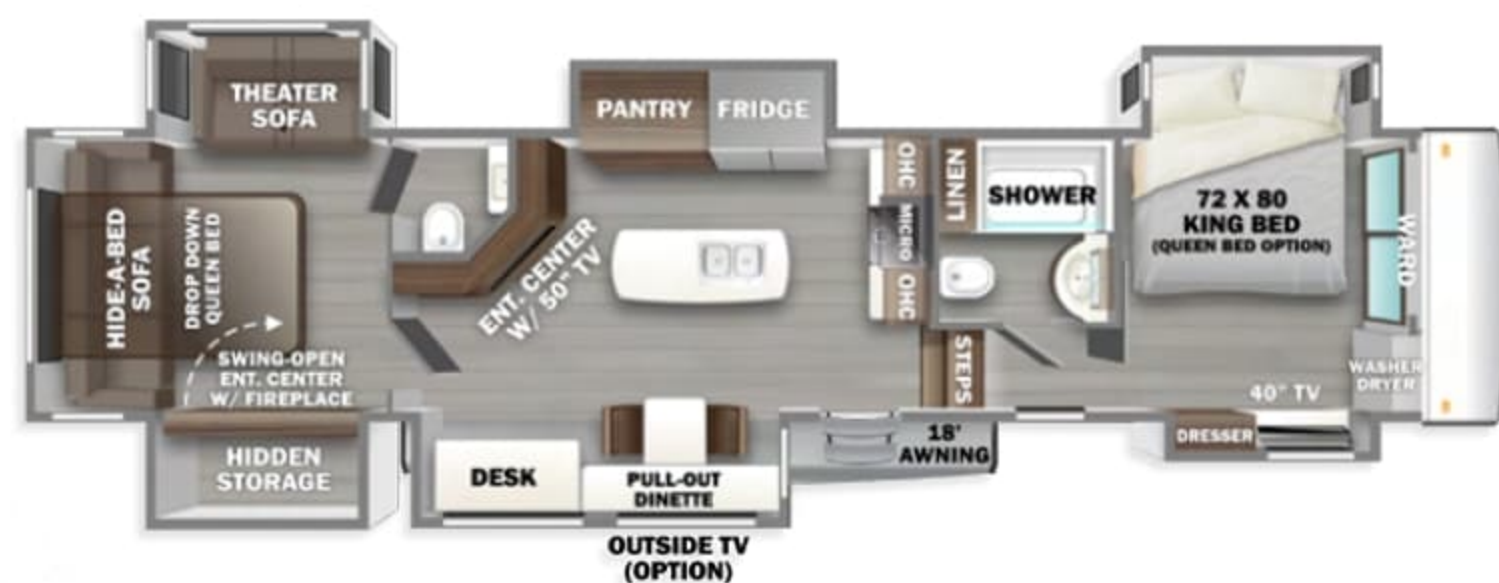
**19,116**  
UVW

**4,704**  
CARGO CAP.

**44' 4"**  
EXT. LENGTH

**13' 4"**  
EXT. HEIGHT

**79F · 80B · 80G**  
TANKS: FRESH, BLACK, GRAY





425FO

MAPLE HONEY CABINETS &  
DOVE FURNITURE

## 425FO

# THE FRONT OFFICE. WORK, MEET PLEASURE.

The 425FO is a brand-new front office floorplan from Riverstone. With a spacious living room and a hidden office space, there is no compromise for those looking to work while on the road. This floorplan offers industry leading storage with a huge front pass-thru and a large rear MORryde Slideout Tray.

### WEIGHTS & MEASURES

<b>3,055</b> HITCH	<b>18,451</b> UVW	<b>5,549</b> CARGO CAP.
<b>45' 2"</b> EXT. LENGTH	<b>13' 4"</b> EXT. HEIGHT	<b>79F · 40B · 80G</b> TANKS: FRESH, BLACK, GRAY





# 4514BATH

DECORATOR WHITE CABINETS  
& STORM GREY FURNITURE  
(TOYHAULER ONLY)



## 4514BATH

# PLAY HARD & REST EASY.

The 4514BATH is a Luxury Toy Hauler without compromise. With the same fit and finish of our standard Riverstone offerings, this model boasts a large 14ft Garage and Rear Patio Deck. Unique to this floorplan, an interior set of bi-folding doors creates an open concept perfect for tailgating or entertaining around the campground.

### WEIGHTS & MEASURES

**3,980**  
HITCH

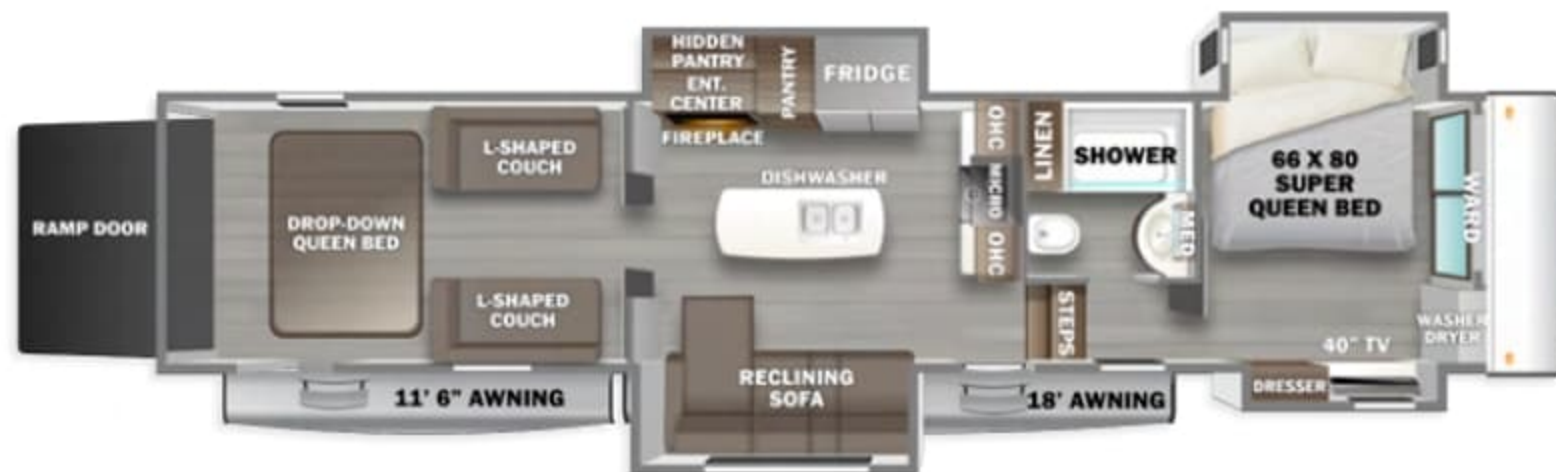
**18,471**  
UVW

**5,529**  
CARGO CAP.

**45'**  
EXT. LENGTH

**13' 4"**  
EXT. HEIGHT

**158F · 40B · 80G**  
TANKS: FRESH, BLACK, GRAY





RIVERSTONE  
**HIGH QUALITY  
 CONSTRUCTION**

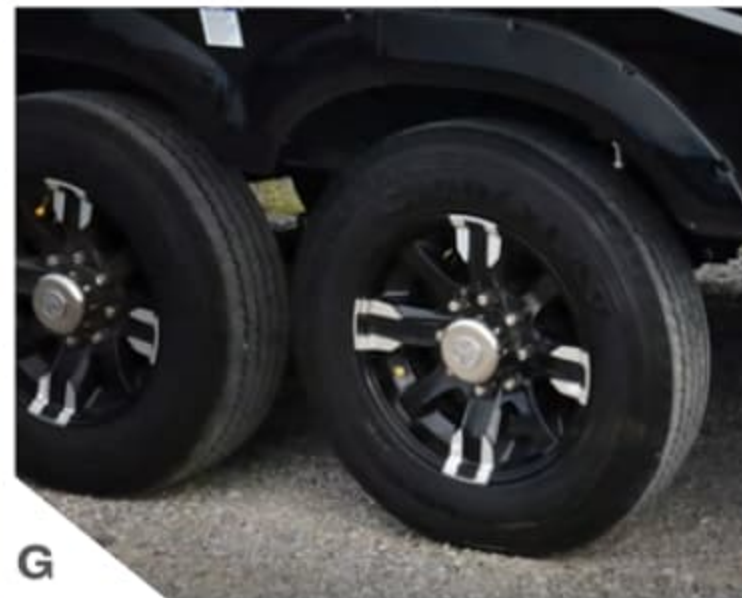
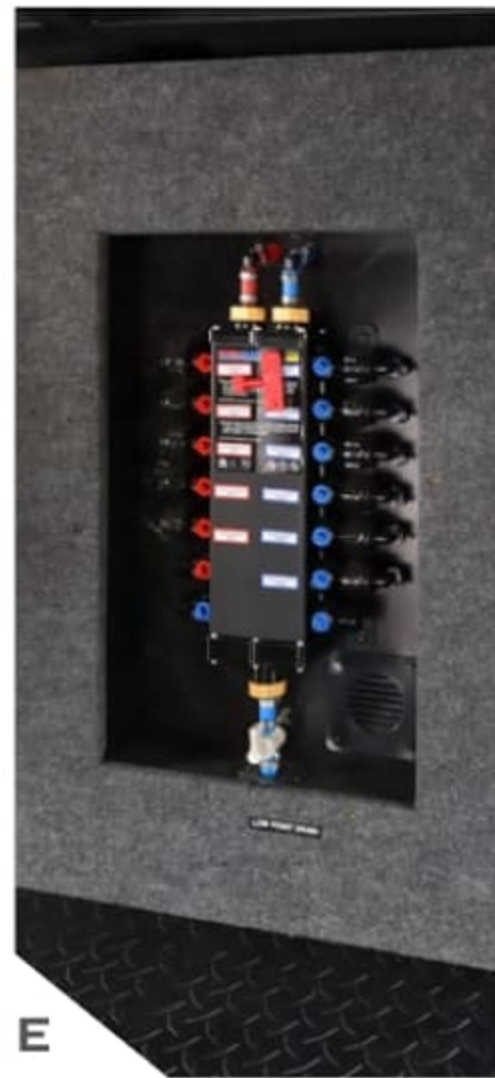
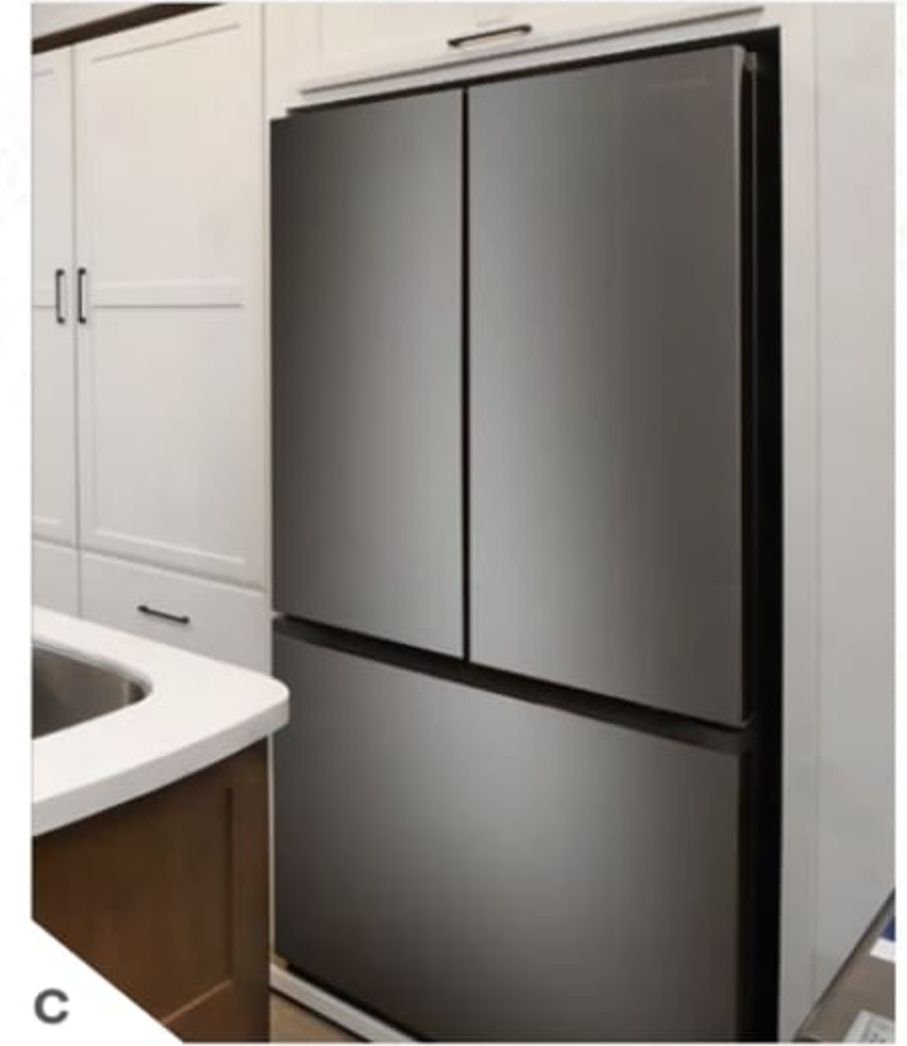
- A. Dual Pane Windows
- B. 3" Wall
- C. Dicor Tufflex Roof
- D. Optional Full Body Paint
- E. 15K Quiet Whisper Air Conditioning

- F. 1/2" Plywood Decking
- G. Batten Insulation
- H. Radiant Thermal Foil
- I. 2.5" Aluminum Studs
- J. Aluminum Roof Trusses 5" Crown
- K. LED Clearance Light

- L. Fiberglass Front Cap
- M. All Steel Upper Deck
- N. Interior Wall Board
- O. 6pt. Auto Hydraulic Leveling
- P. Gel Coat Fiberglass
- Q. Industry Leading Storage

- R. 8,000 lb. Axles / 7,000 lb. Tri-Axles
- S. 17.5" H-Rated Tires
- T. 5/8" Tongue & Groove Plywood
- U. Vinyl Flooring
- V. Fiberglass Rear Cap (N/A on certain models)

RIVERSTONE  
**POPULAR  
FEATURES**



- A. Samsung Convection Microwave
- B. Fisher & Paykel Dishwasher
- C. Samsung Fridge
- D. Splendide Washer & Dryer
- E. Water Manifold System
- F. Samsung Smart HDTV
- G. 17.5" H-Rated Tires
- H. Truma Aqua Go On Demand Water Heater

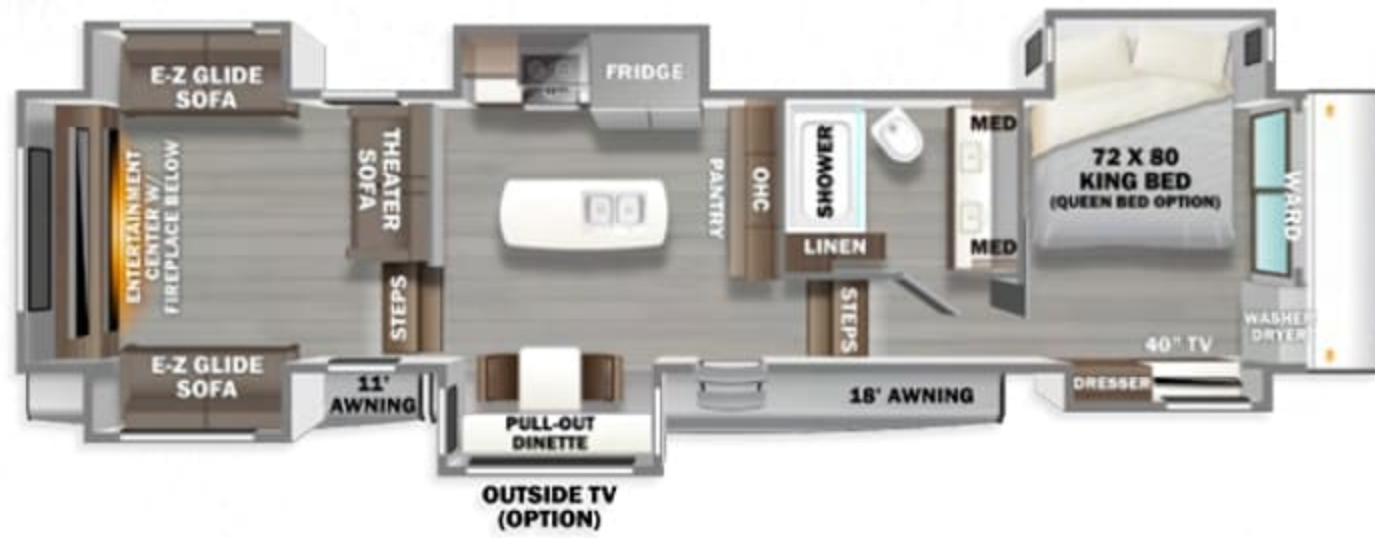
# RIVERSTONE

# FIFTH WHEEL FLOORPLANS



**39RKFB**

3,084	19,084	16,292	2,792	42' 7"	13' 4"	79F · 80B · 80G	20' & 11' 6"
HITCH	GVWR	UVW	CARGO CAP.	EXT. LENGTH	EXT. HEIGHT	TANKS: FRESH, BLACK, GRAY	AWNINGS



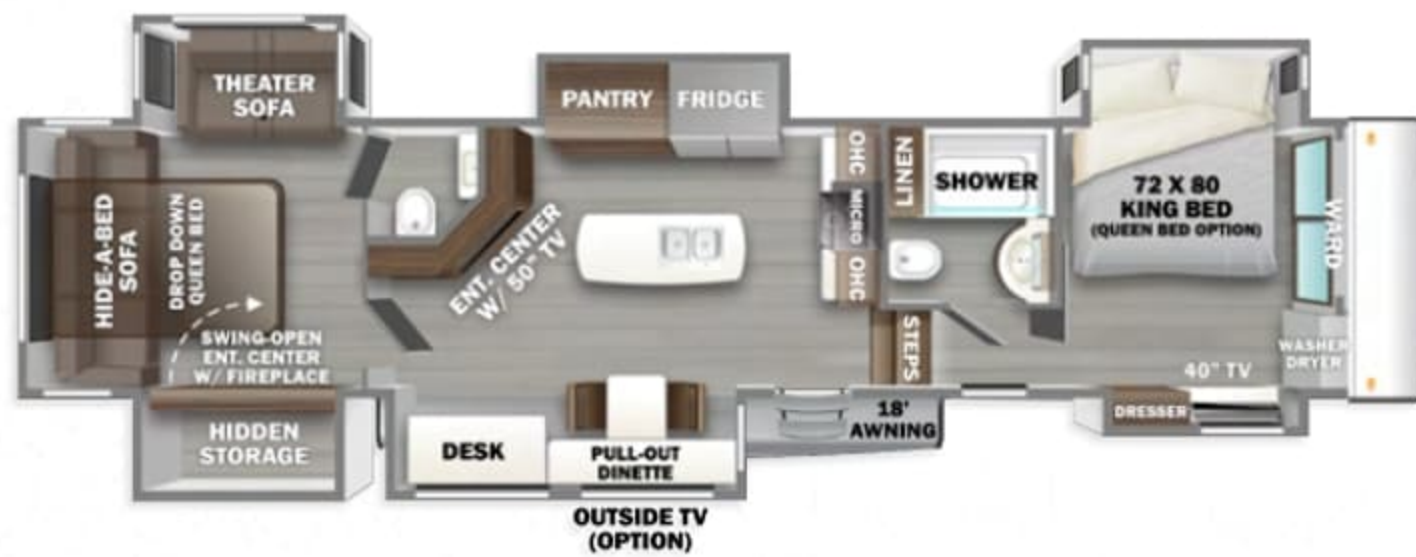
**419RD**

2,945	23,945	18,891	5,054	43'	13' 4"	79F · 40B · 80G	16' & 11' 6"
HITCH	GVWR	UVW	CARGO CAP.	EXT. LENGTH	EXT. HEIGHT	TANKS: FRESH, BLACK, GRAY	AWNINGS



**421FK**

3,270	24,000	18,331	5,669	45'	13' 4"	79F · 40B · 120G	16' & 16'
HITCH	GVWR	UVW	CARGO CAP.	EXT. LENGTH	EXT. HEIGHT	TANKS: FRESH, BLACK, GRAY	AWNINGS



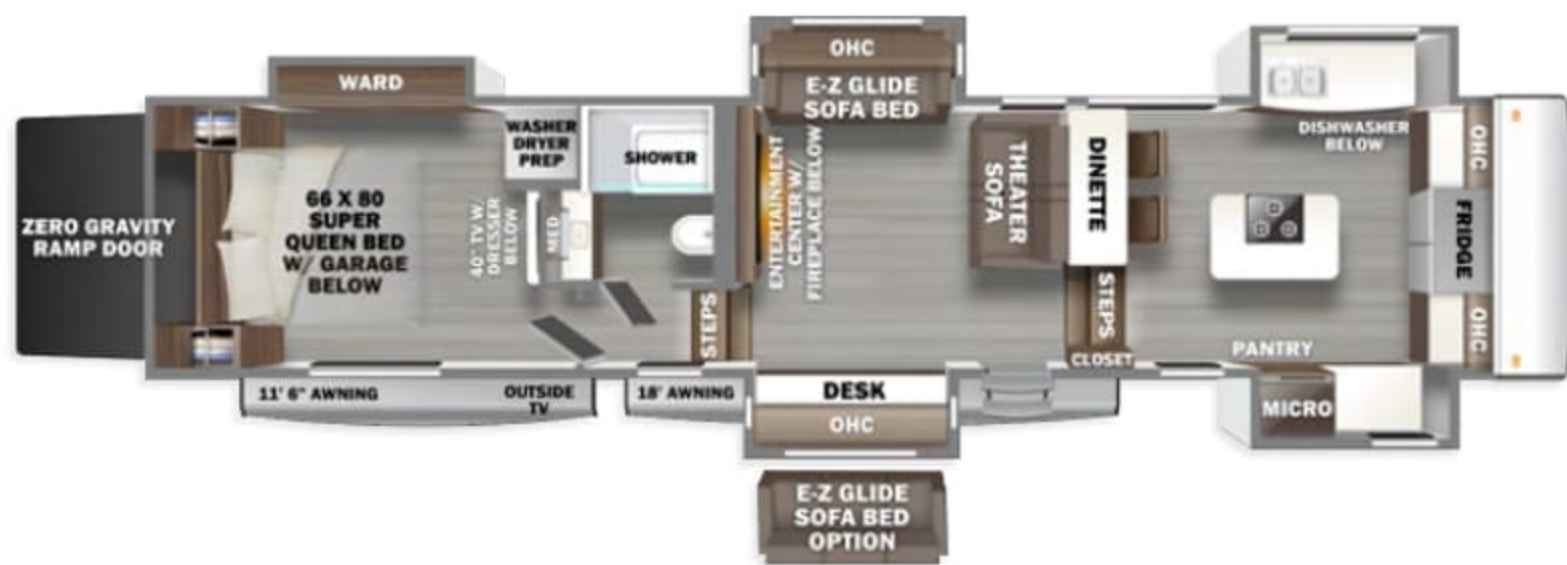
**442MC**

2,820	23,820	19,116	4,704	44' 4"	13' 4"	79F · 80B · 80G	18' & 10'
HITCH	GVWR	UVW	CARGO CAP.	EXT. LENGTH	EXT. HEIGHT	TANKS: FRESH, BLACK, GRAY	AWNINGS



**425FO**

3,055	24,000	18,451	5,549	45' 2"	13' 4"	79F · 40B · 80G	16' & 10'
HITCH	GVWR	UVW	CARGO CAP.	EXT. LENGTH	EXT. HEIGHT	TANKS: FRESH, BLACK, GRAY	AWNINGS



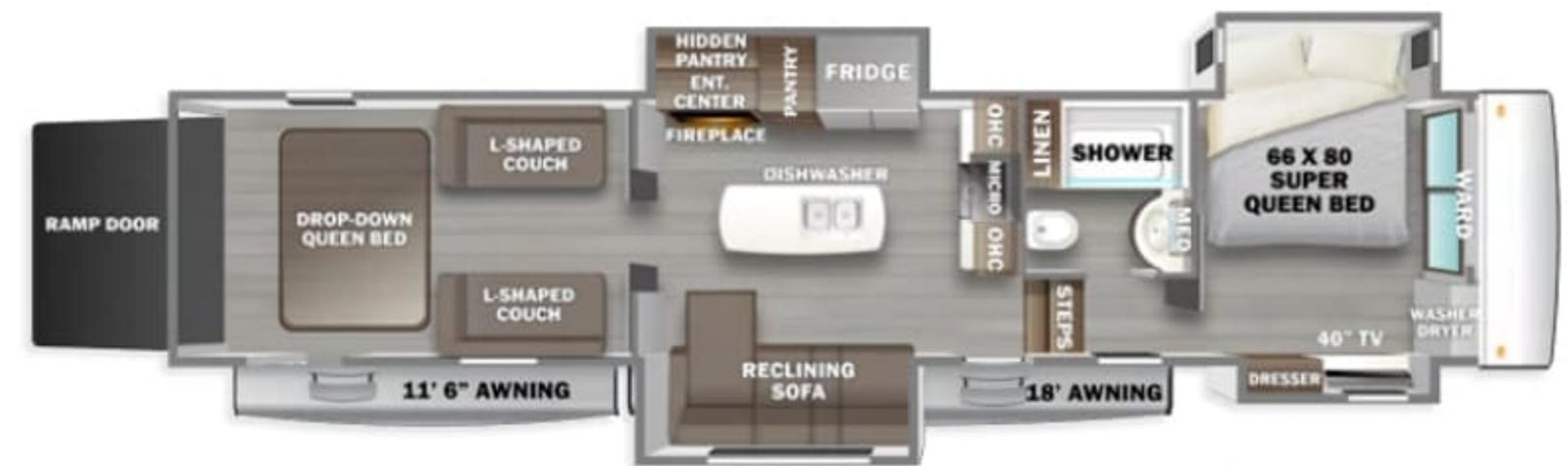
**42FSKG**

3,950	21,000	17,726	3,274	44' 10"	13' 4"	79F · 40B · 80G	18' & 11' 6"
HITCH	GVWR	UVW	CARGO CAP.	EXT. LENGTH	EXT. HEIGHT	TANKS: FRESH, BLACK, GRAY	AWNINGS



**4513DST**

3,645	24,000	18,716	5,284	45' 1"	13' 4"	158F · 40B · 80G	20' & 11' 6" & 8' Rear
HITCH	GVWR	UVW	CARGO CAP.	EXT. LENGTH	EXT. HEIGHT	TANKS: FRESH, BLACK, GRAY	AWNINGS



**4514BATH**

3,980	24,000	18,471	5,529	45'	13' 4"	158F · 40B · 80G	18' & 11' 6" & 8' Rear
HITCH	GVWR	UVW	CARGO CAP.	EXT. LENGTH	EXT. HEIGHT	TANKS: FRESH, BLACK, GRAY	AWNINGS

RIVERSTONE

**TOY HAULER FLOORPLANS**



**BLUE THUNDER**



**SCARLET STORM**

## FIFTH WHEEL COLORS



**STEEL MIST**



**WHITE WATER**



**STANDARD GRAPHICS PACKAGE**



**BLACK MAGIC (TOYHAULER COLOR ONLY)**



**ORANGE CRUSH (TOYHAULER COLOR ONLY)**

## TOY HAULER COLORS

## RIVERSTONE

# STANDARDS & OPTIONS

### STANDARD INTERIOR PACKAGE

- » 3.7 CU. FT. oven with 4-burner range
- » Upgraded Calcutta Solid Surface Countertop in Kitchen
- » Large Stainless Steel Kitchen Sinks with Residential Faucet
- » 18 CU. FT. French Door Refrigerator with Ice Maker
- » Vinyl Flooring
- » LED Lighting Throughout
- » 30" Stainless Steel Microwave with Convection
- » Oval Porcelain Toilet with Foot Flush
- » Central Vacuum System
- » 40,000 BTU Furnace
- » 10" Thick Memory Foam Mattress 72" x 80" Standard (Toy haulers 66"x80")
- » Marine / Woven Flooring in Slideouts
- » Day/Night Roller Shades Throughout
- » 5,200 BTU Fireplace in Living Room
- » Butcher Block Cutting Board Sink Covers
- » Overhead Storage Cabinets in Main Level Living Room
- » Sofa/Desk Slides
- » Residential Soft Close Hinges on Cabinet Doors
- » Soft Close Drawer Glides
- » Under-Bed Storage Compartment
- » Ceramic Tile Backsplash

### STANDARD EXTERIOR PACKAGE

- » Batten Insulation in Side Walls, Slideouts, Ceiling, and Floors
- » ½" Plywood Roof Decking
- » Dicor Full Wrapped Exterior Roof Membrane
- » 17.5" H-Rated Cooper Tires with Aluminum Rims
- » Hydraulic Slideouts on Main Level and Bed Slides
- » Solera Electric Awning with LED Lights
- » Side Turning Lights
- » LCI Road Armour Suspension System
- » 3" Hung Glass Exterior Walls with High Gloss Gel Coat Exterior
- » Tandem 8,000 lb. Axles / 7,000 lb. Tri-Axles
- » 32" x 78" Entry Door with Friction Hinges
- » Dual Pane Frameless Windows
- » Full Docking Station
- » Two 15,000 BTU High Performance Quiet Cool A/Cs with Heat Pumps
- » 12V Powered 50 Amp Cord Reel
- » Painted Full Front and Rear Fiberglass Caps (N/A 419RD, 42FSKG, 421FK, 425FO – front caps only)
- » MORryde Entry Step at Main Door
- » MORryde Safe-T-Rail
- » Water Manifold System
- » **Composite Slideout Floors**
- » Two Dual 6V or 12V Slide-Out Battery Trays
- » High Visibility Chrome LED Tail Lights
- » 2" Hitch Receiver for Bike Rack (300 lb. rating. N/A in Toy Hauler Models)
- » Dual 40 lb. LP Tanks

### RIVERSTONE LUXURY PACKAGE (MANDATORY)

- » Automatic 6-Point Hydraulic Level-Up System
- » Four Camera Observation System Prep
- » TravlFi Journey XTR 4G/LTE Router & WiFi Extender
- » Splendide "Astral" Stackable Washer and Dryer
- » Stained or Painted Hardwood Cabinetry and Stiles Throughout

- » 40" LED TV in Bedroom
- » 12V Heated Holding Tanks
- » Large Infiniti Light over Kitchen Island (NA on 421FK, 42FSKG)
- » Fisher & Paykel Dishwasher
- » Ceiling Fan (N/A on 425FO)
- » Truma Aqua Go Comfort On-Demand Hot Water Heater
- » LP Generator Prep
- » BMPro Energy Management System
- » Tank Sensors Display (Grey, Black and Fresh) Integrated with BMPro Readout
- » Tire Pressure Sensors
- » Additional Campside Awning with Weathershield
- » Two Folding Chairs (N/A 421FK / 42FSKG)

### GARAGE MODEL STANDARDS

- » Triple 7,000 lb. Axles
- » 30 Gallon Fuel Station (4514BATH and 4513DST)
- » Yamaha NPS 5500 Gas Generator with 30 Gallon Fuel Tank (4514BATH and 4513DST)
- » Polk Audio Stereo System in Garage (4514BATH and 4513DST)
- » 66" x 80" Residential 10" Memory Foam Mattress
- » MORryde Zero Gravity Ramp Door
- » 110" Deep, 64" Wide, 82" Tall (Bed up position)
- » 58" Tall (Bed down position) Cargo Area (42FSKG)
- » 166" Deep, 95" Wide; Door 84" Wide, 86" Tall Cargo Area (4514BATH)
- » 156" Deep, 95" Wide; Door 84" Wide, 86" Tall Cargo Area (4513DST)

### ULTIMATE ELECTRONICS PACKAGE (MANDATORY)

- » 65" Samsung LED Smart TV in Living Room (39RKFB, 421FK, 42FSKG)
- » 50-55" Samsung LED Smart TV in Living Room (442MC, 419RD, 425FO, 4513DST, 4514BATH models)

- » JBL Premium Sound System with Subwoofer
- » 1,500W Inverter
- » BMPro Touch Control System
- » 200W Solar Panel with 30Amp Controller
- » Pre-Wire Prep for 2 Additional Solar Panels

### OPTIONAL LEGACY PACKAGE

- » Full Body Paint
- » Hydraulic Disc Brakes
- » 3rd High Performance AC w/ Heat Pump
- » 17.5" H Rated Goodyear Tires
- » Cordless Vacuum
- » LCI Waste Management System

### ADDITIONAL OPTIONS

- » 3rd A/C (15,000BTU) with Heat Pump
- » 5.5 Onan Marquis Gold LP Generator
- » Cadet Wall Mounted Electric Heater in Bedroom
- » Trail Air 21K Hitch (39RKFB, 42FSKG only)
- » Goodyear 17.5" H Rated Tires
- » Furrion Four Camera System with 7" Monitor Screen—Rear, Side and Entry Door Views
- » Slide Room Awning Toppers with Metal Weather Shields
- » Two Additional 200W Solar Panels
- » MORryde Independent Suspension System
- » Full Body Paint
- » Hydraulic Disc Brakes
- » 40" Outside TV (N/A on 42FSKG and 45BATH)
- » 50" Outside TV (42FSKG only)
- » Stone Pattern Flooring
- » Queen Bed Suite IPO King Bed Suite
- » 2nd Sofa IPO Desk (39RKFB, 42FSKG, 421FK)
- » Ceramic Coating
- » Ultimate Solar Package (1,000W, 460AH Lithium Battery)

**24/7 EMERGENCY  
ROADSIDE ASSISTANCE  
WITH VEHICLE PURCHASE\***

- |                 |                         |
|-----------------|-------------------------|
| TOWING          | WINCH-OUT               |
| JUMP-STARTS     | MOBILE MECHANIC         |
| TIRE CHANGES    | TECHNICAL               |
| FLUID DELIVERY  | SUPPORT                 |
| LOCKOUT SERVICE | DEALER LOCATOR SERVICES |



\*VALID FOR 1 YEAR FROM DATE OF PURCHASE



**PRE-DELIVERY INSPECTION FACILITY**

20,000 square feet of quality assurance. The bare essentials for a premium product. This state-of-the-art facility gives immediate daily feedback to production for quality assurance in every unit built.



Learn More  
Scan this barcode using a QR Reader on your smart phone to learn more about Forest River.



A Berkshire Hathaway company.

2577 E. KERCHER RD. GOSHEN, IN 46528 WWW.FORESTRIVERINC.COM/SABRE 574.642.3697

**FREE MEMBERSHIP**  
to Forest River Owners' Group

www.forestriverfrog.com



www.ForestRiverBuyLocal.com

**Specification Definitions**

**UVW (Unloaded Vehicle Weight)\*** - is the typical weight of the unit as manufactured at the factory. It includes all weight at the unit's axle(s) and tongue or pin and LP Gas. The UVW does not include cargo, fresh potable water, additional optional equipment or dealer installed accessories. \*Estimated average based on standard build optional equipment. **CCC (Cargo Carrying Capacity)\*\*** - is the amount of weight available for fresh potable water, cargo, additional optional equipment and accessories. CCC is equal to GVWR minus UVW. Available CCC should accommodate fresh potable water (8.3 lbs per gallon). Before filling the fresh water tank, empty the black and gray tanks to provide for more cargo capacity. \*\* Estimated average based on standard build optional equipment. Each Forest River RV is weighed at the manufacturing facility prior to shipping. A label identifying the unloaded vehicle weight of the actual unit and the cargo carrying capacity is applied to every Forest River RV prior to leaving our facilities. The load capacity of your unit is designated by weight, not by volume, so you cannot necessarily use all available space when loading your unit. All information contained in this brochure is believed to be accurate at the time of publication. However, during the model year, it may be necessary to make revisions and Forest River, Inc., reserves the right to make all such changes without notice, including prices, colors, materials, equipment and specifications as well as the addition of new models and the discontinuance of models shown in this brochure. Therefore, please consult with your Forest River, Inc., dealer and confirm the existence of any materials, design or specifications that are material to your purchase decision. Litho. U.S.A. FOR 2235 P/W: 2023.08.20

YOUR RIVERSTONE DEALER