



# DUTCH STAR

2023 DIESEL MOTORCOACH





## EVERYTHING YOU LOVE IN A COACH—MADE NEW.

We've made our bestselling coach all-new for 2023. The Dutch Star offers new styling inside and out, new features, advanced technology throughout, and innovations that make it even easier to hit the road at a moment's notice.





## Freightliner® Tag Axle Chassis Spartan® K2 Tag Axle Chassis (Optional)

Cummins L Diesel Engine // 450 HP // 1250 lb./ft. torque  
Alora Full-Paint Masterpiece Finish™ Exterior



40'–43' // 9 floor plans



## Freightliner® Chassis

Cummins L Diesel Engine // 450 HP // 1250 lb./ft. torque  
Alora Full-Paint Masterpiece Finish™ Exterior



37' // 3 floor plans



# COCKPIT

**Newly Designed Dash**

**Industry-First Comfort Drive™ Adaptive Steering**

**Mobileye® Lane Tracking and Lane Departure System**

**OnGuard™ Collision Mitigation Adaptive Cruise System with Adjustable Following Distance Control**  
(Optional)

**Valid Digital Glare-Free Dash\***

**Heated Driver and Passenger Seats** (Optional)  
Six-Way Power Lumbar and Footrest  
Passenger Seat Workstation

**Xite Dash Radio**  
9" Dual Monitors  
Nav-N-Go Navigation System  
Apple CarPlay  
360 Camera System (Optional)

**Harman/JBL 180 Watt Sound System and Subwoofer**

**Wireless Charging Mats**

\*Spartan® chassis only





# CABIN

**Four New Décor Options:  
Alora, Bayshore, Camelot, and Dali**

**Samsung® 50" 4K LED TV on Televator**  
Bose® Soundbar

**15M Penguin™ Heat Pump Central Air Conditioners  
and Remote\***

**Electric Radiant Heat Beneath Main Floor Tile** (Optional)

**Villa Comfort Fit Furniture**  
Various Configurations Available

**Newly Designed Furniture and Décor Styling**

\*Two units on 37' and 40' floor plans; 3 units on 43' floor plans



*Floor plan 4325 with Alora décor  
and Glacier cabinets*





# CABIN

**New Feature Ceiling and Slideout Fascia**

**New Flooring**

**10" Central Monitor Panel to Control Elements of the Coach\***

**Beverage Center<sup>1</sup> (Optional)**

**WiFi Ranger Denali LTE System with Spruce Router (Optional)**

\*New for 2023

<sup>1</sup>Available on Floor Plan 4325 only





# GALLEY

## **Stainless Steel Convection Microwave**

## **Three Burner Recessed Gas Cooktop**

All Electric Recessed Mount Induction Cooktop (Optional)  
Available with 8 AGM Batteries or Lithium Ion 640 AHR Battery System

## **Whirlpool® 19.7 cu. ft. Refrigerator**

## **Stainless Steel Dishwasher in Drawer** (Optional)

## **Glazed Maple Hardwood Cabinets\***

Available in Four Matte or High Gloss Finish Color Options  
Soft-Close Cabinet Drawers  
LED Lights Undermounted in Pull-Out Pantry and Cabinets

## **Large Pantry**

Pull-Out Shelves  
Push-to-Release Drawer Slides

## **Super Polished Solid Surface Countertops**

## **New Backsplash\***

## **Kitchen Window** (Optional)

\*New for 2023





# DINETTE

## Door-Side Euro Booth Dinette\*

### Euro Booth Dinette

Two Table Leaves  
Two Folding Chairs

### Buffet Dinette\*\* (Optional)

Three Configurations Available

\*Floor Plan 4071 and 4370

\*\*Additional dinette configurations available







# MASTER BEDROOM

**King Bed\* with Pillow Top Mattress**  
Adjustable Support Air Bed (Optional)

**Samsung® LED TV**

**Lighted Wardrobe**  
Safe (Optional)  
Shoe Storage (Optional)

\*Bed size varies by floor plans





# BATHROOM

**Mid-Ship Bath\***

**Residential Shower\*\***

**Dual-Sink Vanity\***

**Aqua Miser® Shower System**

**New Sink, Fixtures, and Backsplash**

**Splendide® Two-Piece Stacked Washer and Dryer**  
(Optional)

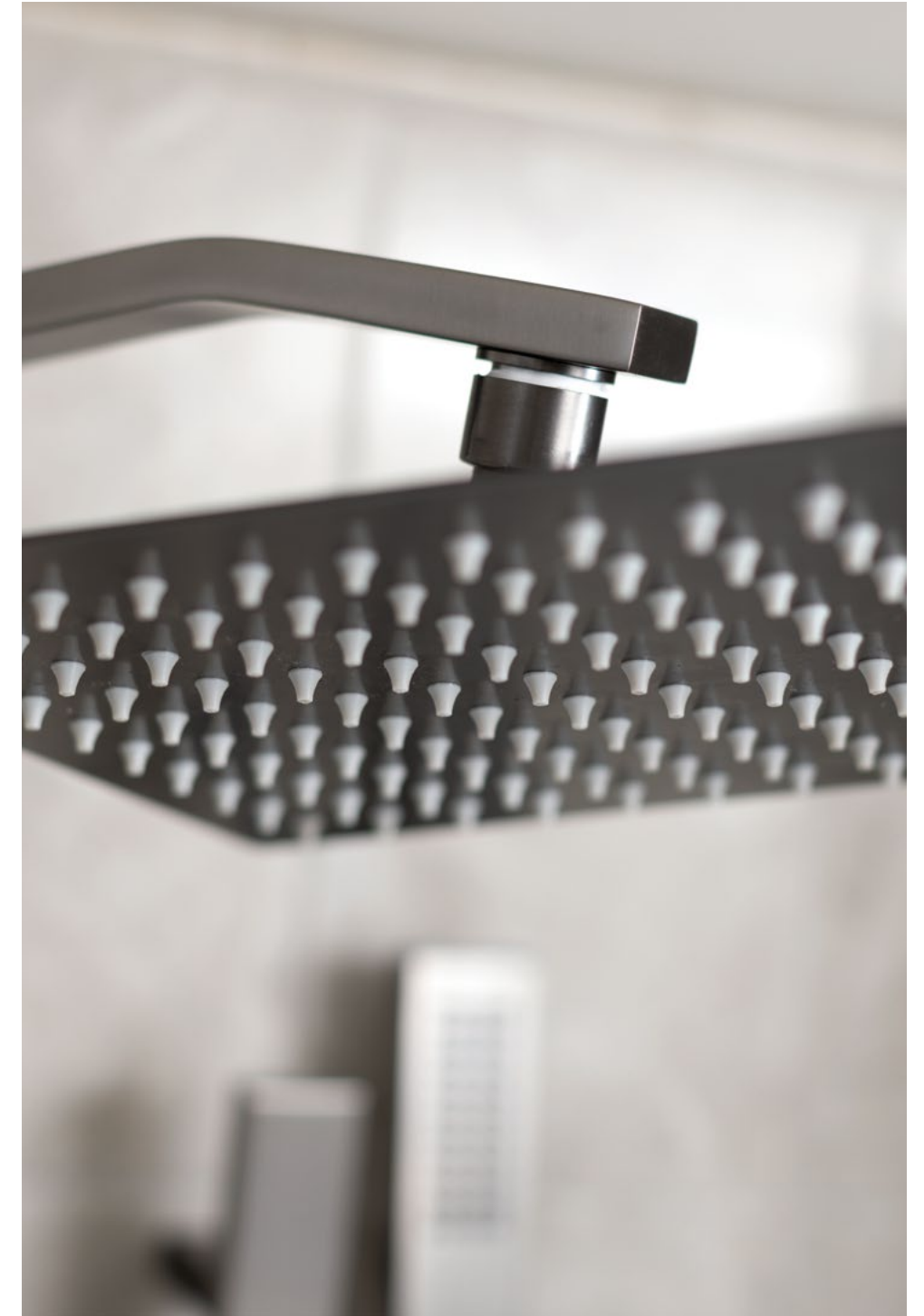
**Chinook Dual Loop Heat with Continuous Hot Water\***

**Super Polished Solid Surface Countertops**

**Cathedral Ceiling for Added Height** (Rear Bath Floor Plans)

\*Select Floor Plans

\*\*Shower sizes vary by floor plan





# EXTERIOR

## New Front and Rear Caps

## Industry-Exclusive Full-Paint Masterpiece Finish™ with Cut and Buff

## Four New Graphic Design and Color Options

## Lithium Ion Battery System (Optional)\*

Two Lithionics 320 AHR Battery Packs  
Surge Guard Transfer Switch

## SilverStar Ultra Headlight Bulbs

## Basement Storage with Easy-Close Doors

## Dometic® 3.0 Cu. Ft. Freezer on Pull-Out Tray (Optional)

## Exterior Entertainment Center (Optional)

Samsung® 32" or 43" 4K LED TV  
Bose® Soundbar

\*New for 2023





# EXTERIOR

**Industry-Exclusive STAR Foundation**

**Cummins Onan® Diesel Generator**

8.0 kW unit on 37' and 40' floor plans; 10.0 kW unit on 43' floor plans

**10w Solar Panel** (to charge chassis battery)





INTERIOR/EXTERIOR  
DESIGN OPTIONS

# Alora

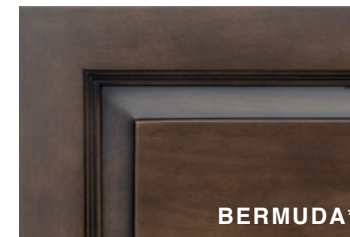


Awning Color: Charcoal Tweed

## ALORA INTERIOR a. Furniture/Fabric b. Flooring c. Counter Top



## CABINET FINISHES



*\*Exterior colors and interior décor options can be matched to customer preference.*

*\*Available in High Gloss or Matte Finish*





# Bayshore

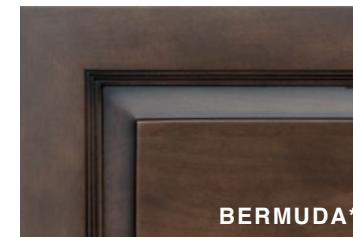
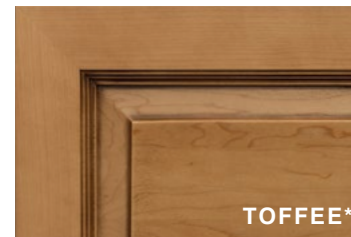


Awning Color: Linen Tweed

## BAYSHORE INTERIOR a. Furniture/Fabric b. Flooring c. Counter Top



## CABINET FINISHES



\*Exterior colors and interior décor options can be matched to customer preference.

\*Available in High Gloss or Matte Finish

# Camelot



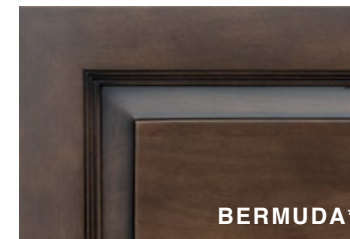
Awning Color: Charcoal Tweed

## CAMELOT INTERIOR

a. Furniture/Fabric   b. Flooring   c. Counter Top



## CABINET FINISHES



*\*Exterior colors and interior décor options can be matched to customer preference.*

*\*Available in High Gloss or Matte Finish*







# Dali

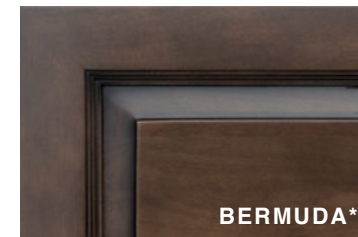
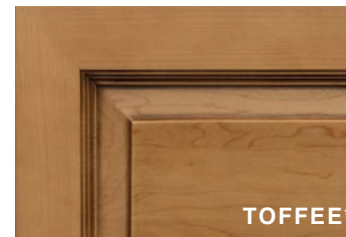


Awning Color: Charcoal Tweed

## DALI INTERIOR a. Furniture/Fabric b. Flooring c. Counter Top

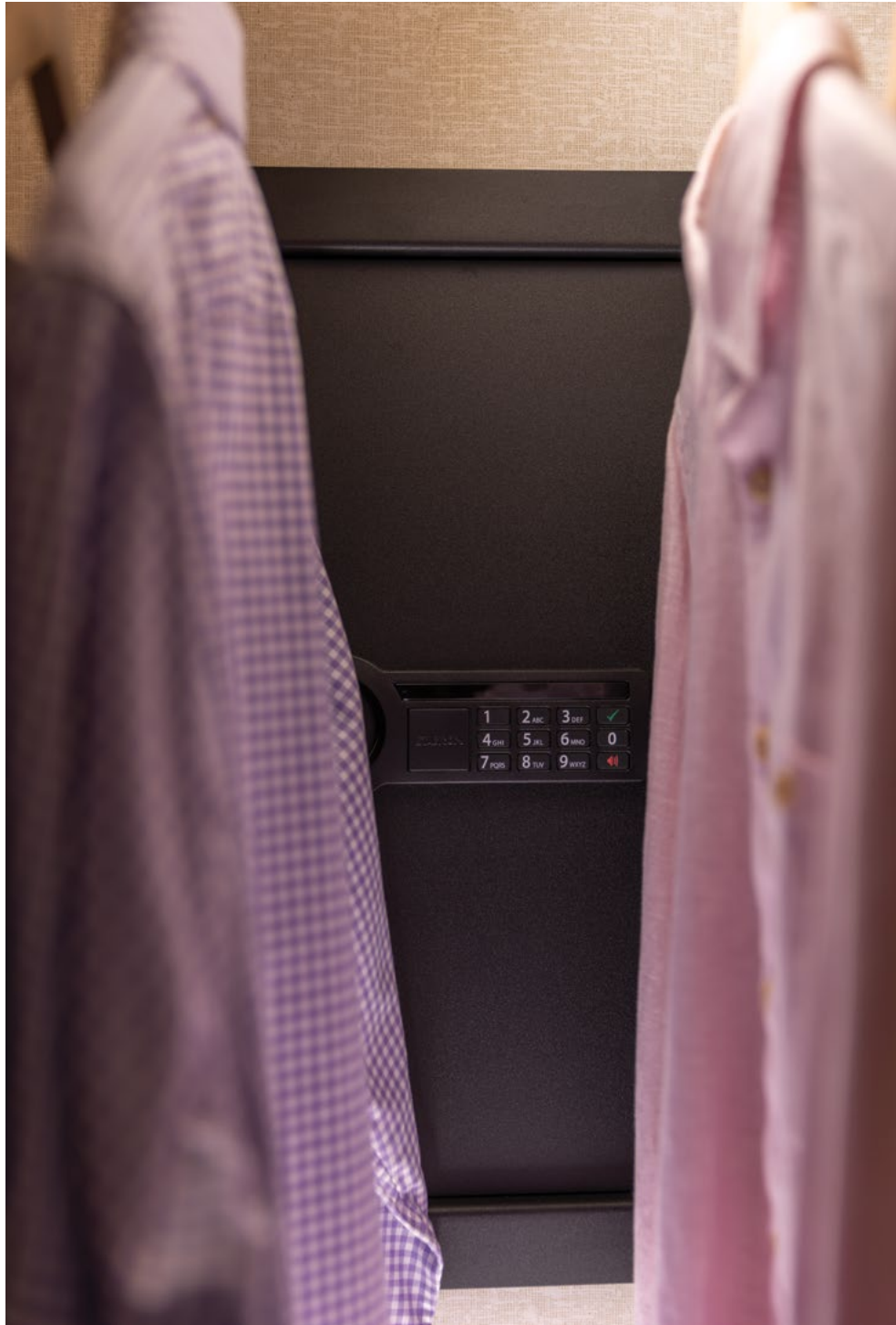


## CABINET FINISHES



\*Exterior colors and interior décor options can be matched to customer preference.

\*Available in High Gloss or Matte Finish

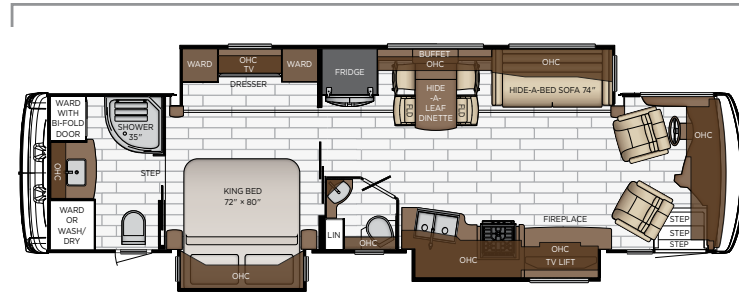




# FLOOR PLANS & SPECIFICATIONS

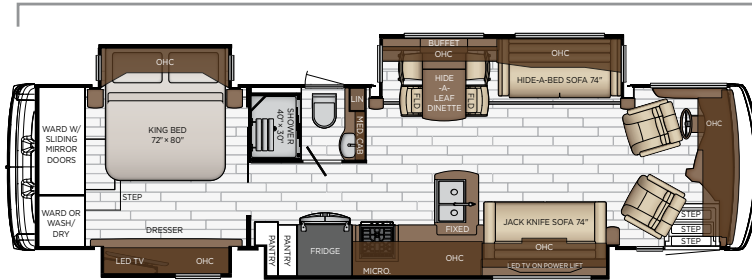


Length: 37' 11"



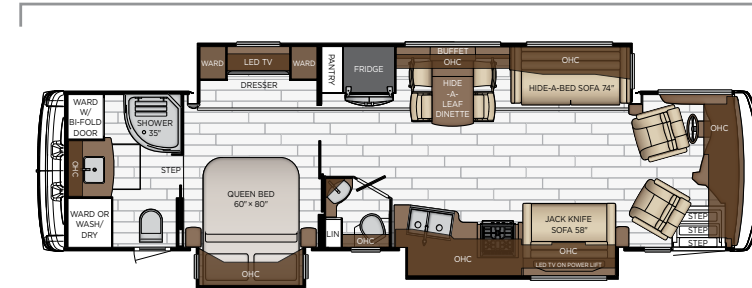
<b>3709</b>	Length	37' 11"	Grey Tank	75 gal.
	Width	101.5"	Sewage Tank	55 gal.
	App. Overall Height	13' 01"	Water Tank	105 gal.
	Interior Width	95.5"	Propane Tank	22 gal.
	Interior Height	83"	Furnace	50,000 btu

Length: 37' 11"



<b>3717</b>	Length	37' 11"	Grey Tank	75 gal.
	Width	101.5"	Sewage Tank	55 gal.
	App. Overall Height	13' 01"	Water Tank	105 gal.
	Interior Width	95.5"	Propane Tank	22 gal.
	Interior Height	83"	Furnace	50,000 btu

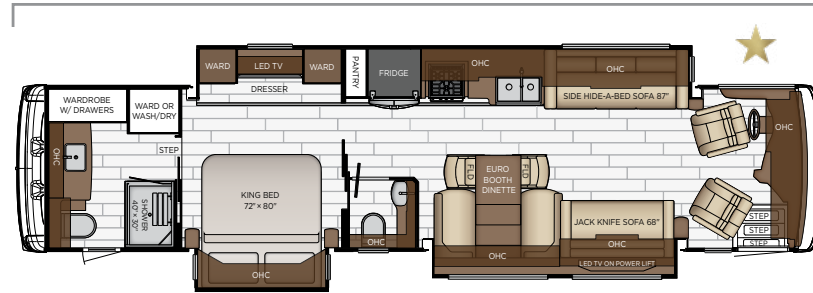
Length: 37' 11"



<b>3736</b>	Length	37' 11"	Grey Tank	75 gal.
	Width	101.5"	Sewage Tank	55 gal.
	App. Overall Height	13' 01"	Water Tank	105 gal.
	Interior Width	95.5"	Propane Tank	22 gal.
	Interior Height	83"	Furnace	50,000 btu



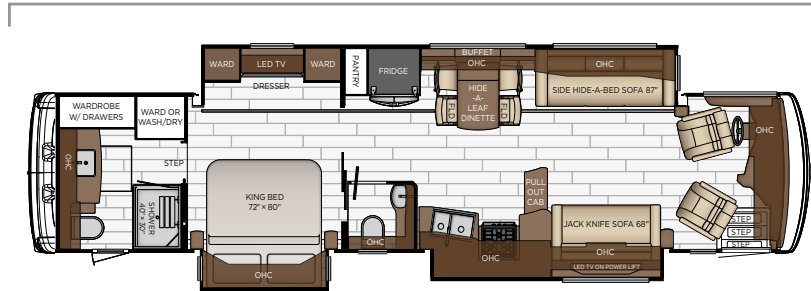
Length: 40' 09"



4071

Length	40' 09"	Grey Tank	75 gal.
Width	101.5"	Sewage Tank	55 gal.
App. Overall Height	13' 01"	Water Tank	105 gal.
Interior Width	95.5"	Propane Tank	22 gal.
Interior Height	83"	Furnace	50,000 btu

Length: 40' 09"



4081

Length	40' 09"	Grey Tank	75 gal.
Width	101.5"	Sewage Tank	55 gal.
App. Overall Height	13' 01"	Water Tank	105 gal.
Interior Width	95.5"	Propane Tank	22 gal.
Interior Height	83"	Furnace	50,000 btu

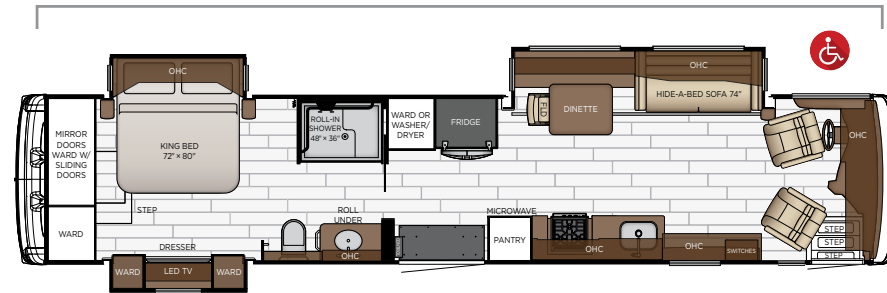
Length: 43' 09"



4310

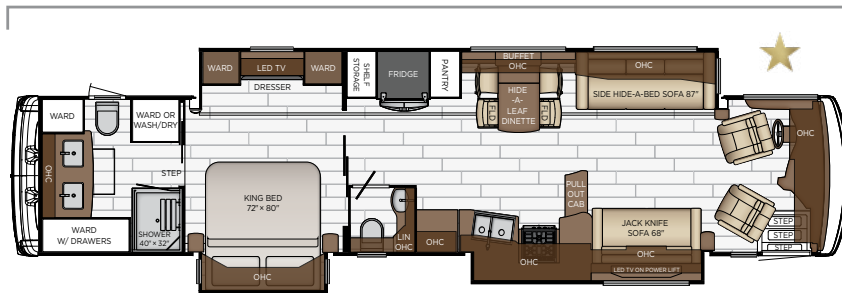
Length	43' 09"	Grey Tank	75 gal.
Width	101.5"	Sewage Tank	55 gal.
App. Overall Height	13' 01"	Water Tank	105 gal.
Interior Width	95.5"	Propane Tank	22 gal.
Interior Height	83"	Furnace	85,000 btu

Length: 43' 09"



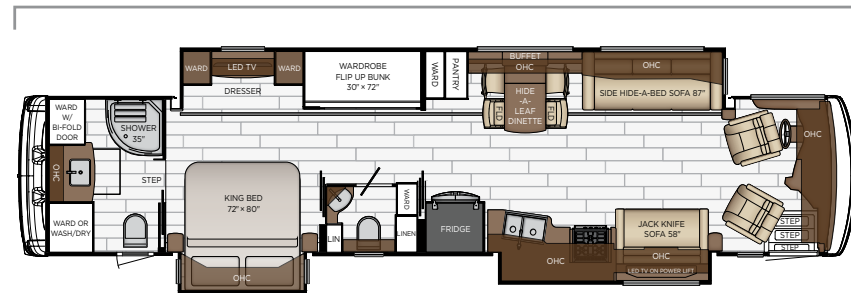
<b>4311</b>	Length	43' 09"	Grey Tank	75 gal.
	Width	101.5"	Sewage Tank	55 gal.
	App. Overall Height	13' 01"	Water Tank	105 gal.
	Interior Width	95.5"	Propane Tank	22 gal.
	Interior Height	83"	Furnace	50,000 btu

Length: 43' 09"



<b>4325</b>	Length	43' 09"	Grey Tank	75 gal.
	Width	101.5"	Sewage Tank	55 gal.
	App. Overall Height	13' 01"	Water Tank	105 gal.
	Interior Width	95.5"	Propane Tank	22 gal.
	Interior Height	83"	Furnace	50,000 btu

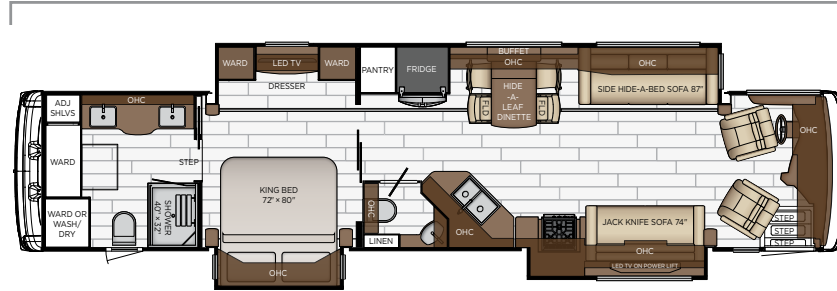
Length: 43' 09"



<b>4326</b>	Length	43' 09"	Grey Tank	75 gal.
	Width	101.5"	Sewage Tank	55 gal.
	App. Overall Height	13' 01"	Water Tank	105 gal.
	Interior Width	95.5"	Propane Tank	22 gal.
	Interior Height	83"	Furnace	50,000 btu

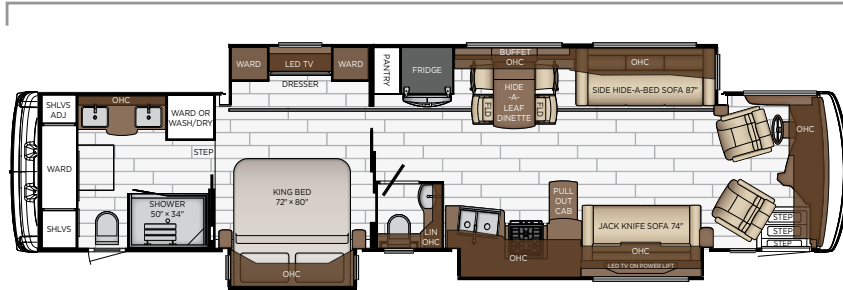


Length: 43' 09"



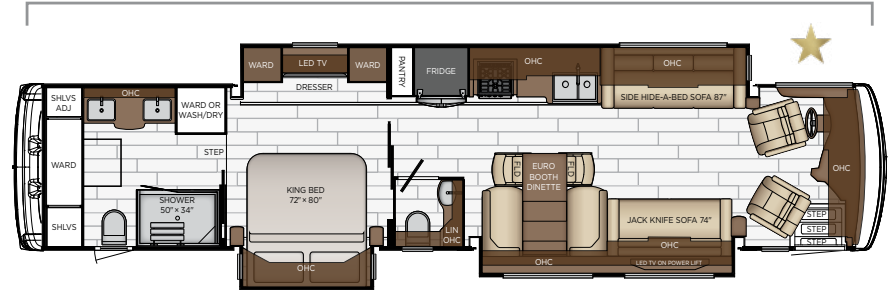
<b>4328</b>	Length	43' 09"	Grey Tank	75 gal.
	Width	101.5"	Sewage Tank	55 gal.
	App. Overall Height	13' 01"	Water Tank	105 gal.
	Interior Width	95.5"	Propane Tank	22 gal.
	Interior Height	83"	Furnace	50,000 btu

Length: 43' 09"



<b>4369</b>	Length	43' 09"	Grey Tank	75 gal.
	Width	101.5"	Sewage Tank	55 gal.
	App. Overall Height	13' 01"	Water Tank	105 gal.
	Interior Width	95.5"	Propane Tank	22 gal.
	Interior Height	83"	Furnace	50,000 btu

Length: 43' 09"



<b>4370</b>	Length	43' 09"	Grey Tank	75 gal.
	Width	101.5"	Sewage Tank	55 gal.
	App. Overall Height	13' 01"	Water Tank	105 gal.
	Interior Width	95.5"	Propane Tank	22 gal.
	Interior Height	83"	Furnace	50,000 btu

# QUALITY YOU CAN FEEL

Like a fine home, the 2023 Dutch Star is framed 16 inches on center, and is covered by a fiberglass roof with an integrated gutter rail.



FREIGHTLINER®											
FLOOR PLAN	ENGINE HP	AXLE RATIO	FUEL CAP.	WHEEL BASE	FRONT GAWR	REAR GAWR	TAG GAWR	GVWR	GCWR	APP. UVW	APP. NCC
3709	450	4.78	100 gal.	242	16000 lb.	24000 lb.	n/a	40000 lb.	50000 lb.	34250 lb.	5750 lb.
3717	450	4.78	100 gal.	242	16000 lb.	24000 lb.	n/a	40000 lb.	50000 lb.	34350 lb.	5650 lb.
3736	450	4.78	100 gal.	242	16000 lb.	24000 lb.	n/a	40000 lb.	50000 lb.	34400 lb.	5600 lb.
4071	450	4.78	100 gal.	252+TAG	17000 lb.	20000 lb.	12000 lb.	49000 lb.	64000 lb.	38000 lb.	11000 lb.
4081	450	4.78	100 gal.	252+TAG	17000 lb.	20000 lb.	12000 lb.	49000 lb.	64000 lb.	37500 lb.	11500 lb.
4310	450	4.78	150 gal.	288+TAG	19000 lb.	20000 lb.	12000 lb.	51000 lb.	66000 lb.	40550 lb.	10450 lb.
4311	450	4.78	150 gal.	288+TAG	19000 lb.	20000 lb.	12000 lb.	51000 lb.	66000 lb.	37750 lb.	13250 lb.
4325	450	4.78	150 gal.	288+TAG	19000 lb.	20000 lb.	12000 lb.	51000 lb.	66000 lb.	40100 lb.	10900 lb.
4326	450	4.78	150 gal.	288+TAG	19000 lb.	20000 lb.	12000 lb.	51000 lb.	66000 lb.	40400 lb.	10600 lb.
4328	450	4.78	150 gal.	288+TAG	19000 lb.	20000 lb.	12000 lb.	51000 lb.	66000 lb.	39750 lb.	11250 lb.
4369	450	4.78	150 gal.	288+TAG	19000 lb.	20000 lb.	12000 lb.	51000 lb.	66000 lb.	40150 lb.	10850 lb.
4370	450	4.78	150 gal.	288+TAG	19000 lb.	20000 lb.	12000 lb.	51000 lb.	66000 lb.	40700 lb.	10300 lb.
SPARTAN®											
FLOOR PLAN	ENGINE HP	AXLE RATIO	FUEL CAP.	WHEEL BASE	FRONT GAWR	REAR GAWR	TAG GAWR	GVWR	GCWR	APP. UVW	APP. NCC
4071	450	4.88	100 gal.	252+TAG	17000 lb.	20000 lb.	12000 lb.	49000 lb.	64000 lb.	37400 lb.	11600 lb.
4081	450	4.88	100 gal.	252+TAG	17000 lb.	20000 lb.	12000 lb.	49000 lb.	64000 lb.	37450 lb.	11550 lb.
4310	450	4.88	150 gal.	288+TAG	20000 lb.	20000 lb.	12000 lb.	52000 lb.	67000 lb.	40700 lb.	11300 lb.
4311	450	4.88	150 gal.	288+TAG	20000 lb.	20000 lb.	12000 lb.	52000 lb.	67000 lb.	37850 lb.	14150 lb.
4325	450	4.88	150 gal.	288+TAG	20000 lb.	20000 lb.	12000 lb.	52000 lb.	67000 lb.	40350 lb.	11650 lb.
4326	450	4.88	150 gal.	288+TAG	20000 lb.	20000 lb.	12000 lb.	52000 lb.	67000 lb.	40500 lb.	11500 lb.
4328	450	4.88	150 gal.	288+TAG	20000 lb.	20000 lb.	12000 lb.	52000 lb.	67000 lb.	39900 lb.	12100 lb.
4369	450	4.88	150 gal.	288+TAG	20000 lb.	20000 lb.	12000 lb.	52000 lb.	67000 lb.	40350 lb.	11650 lb.
4370	450	4.88	150 gal.	288+TAG	20000 lb.	20000 lb.	12000 lb.	52000 lb.	67000 lb.	40750 lb.	11250 lb.

The content in our literature depicts and describes products that are subject to change. For the most recent images and information, please visit [NewmarCorp.com](http://NewmarCorp.com).

Lengths, heights, widths, and dry weights are approximate. Weight will vary based on optional equipment added to the above base weight.

**GAWR:** Gross Axle Weight Rating is the maximum permissible weight for an axle.

**GVWR:** Gross Vehicle Weight Rating is the maximum permissible weight for a fully loaded motor coach.

**GCWR:** Gross Combination Weight Rating is the value specified by the manufacturer of the vehicle as the maximum allowable loaded weight of this motor coach and any towed trailer or towed vehicle.

**UVW:** Unloaded Vehicle Weight is the weight of this motor coach as built at the factory with full fuel, engine oil, and coolants. Does not include cargo, fresh water, propane gas, or dealer-installed accessories.

**NCC:** Net Carrying Capacity is the maximum weight of all occupants, including the driver, personal belongings, food, fresh water, waste water, propane gas, tools, tongue weight of towed vehicle, dealer-installed accessories, etc., that can be carried by the motor coach.

**Specifications supplied by the chassis manufacturer.**

**Dutch Star R-Values:**

Roof R-Value = 19

Sidewall R-Value = 11

Floor R-Value = 16

Basement R-Value = 4



A dark, blue-tinted photograph of a luxury motorhome interior. The view is from the front of the vehicle looking back. On the left, there is a large, plush sofa with several pillows. On the right, there is a large, comfortable-looking chair. The ceiling is high and features a complex, recessed lighting grid with multiple circular lights. The walls and overhead cabinets are visible, showing a high-end finish. The overall atmosphere is one of sophisticated luxury.

# FEATURES & OPTIONS

## EXTERIOR FEATURES

Full-Paint Masterpiece Finish™ with Clearcoat Finish and Diamond Shield Protection on Front Cap

Convex Chrome Exterior Mirrors with Defrost, Remote Control and Turn Signal Indicators

Chrome Power Baggage Door Locks, Keyless Entrance Door with Touch Pad and Door Bell

Entrance Door with Automatic Step

Assist Handle at Entrance Door

Rear Hitch for Towing Car

Mud Flaps

Rear Protective Tow Guard with Stainless Steel Newmar Name Cutout

Undercoating

Hydraulic Leveling Jacks

Stainless Steel Kick Panel at Entrance Door

Storage Bins in Pegboard Compartment

Wheelchair Lift\*

### OPTIONS

Baggage Door Stainless Steel Trim Kit

Flag Pole Bracket

Storage Tray 26 X 90 Power Location-Bay 2

Storage Tray 26 X 91 Non-Power Location-Bay 2

Storage Tray 32 X 91 Non-Power Location-Bay 2

Storage Tray 39 X 56 Non-Power Location-Bay 3

Storage Tray 42 X 91 Non-Power Location-Bay 3

Storage Tray 43 X 56 Non-Power Location-Bay 2

Storage Tray 43 X 56 Non-Power Location-Bay 3

Storage Tray 43 X 56 Non-Power Location-Bay 4

## CONSTRUCTION FEATURES

Fiberglass Roof and Integrated Gutter Rail

Gelcoated Fiberglass Exterior Sidewalls, Front and Rear Caps

Aluminum-Frame Sidewalls and Roof Construction, 16" on Center

5/8" Foam Insulation Laminated in Sidewalls and Ceiling

Polar Pak R19 Batten Insulation on Roof

Automatic Lock Arms on Non Hydraulic Slide-Out Rooms-Paddle Style

Power Opening Entrance Door for Wheelchair Lift on 4311

Egress Door with Ladder System

## WINDOWS, AWNINGS, & VENTS

Frameless Double-Pane Tinted Safety-Glass Windows

Fan-Tastic® Vent with Rain Sensor in Kitchen and Bathroom

Hardwood Louvered Cover on Fan-Tastic® Vent in Kitchen

Skylight Above Shower\*

One-Piece Tinted Windshield

Driver Side Power Window

Carefree Slideout Covers and Power Entrance Door Awning with LED Lights

Girard® G2000 Power Side Awning with Wind Sensor, Remote Control and LED Lights

### OPTIONS

Carefree Window Awning Package of Three: 1-Bedroom, 1-Off Door Side Livingroom and 1-Door side Livingroom

Girard® Package of Two: Nova Side Awnings, Slideout Covers, Entrance Door and Power Window Awnings

Bunk Windows\*

Kitchen Window\*

Two Nova Side Awnings

Screen Door Over Wheelchair Lift Area on 4311

## CHASSIS FEATURES

Freightliner® 450Hp on 37'

Freightliner® Tag Axle 450Hp on 40'-43'

Freightliner® V-Ride Drive Axle Suspension

Valor Generation 3 TPMS System on Spartan® Chassis

Aluminum Wheels

Electronic Chassis Information Center in Dash

Cruise Control

Comfort Drive™ Steering with Power Column and Adjustable Control

Manual Tilt/Telescope Steering Wheel with VIP Smart Wheel

Recessed Fuel Fills with Crossover to Fill from Either Side

Back-Up Alarm

Anti-Lock Braking System

Chassis Battery Disconnect

Automatic Traction Control

Electronic Stability Control

Glass Dash Instrument Panel

Dash Panel Optiview on Freightliner®





- Valid Digital Glare Free Dash on Spartan® Chassis
- Prep for OnGuard™ Collision Mitigation Adaptive Cruise System
- Tire Pressures Monitoring On Non-Tag and Tag Axle Chassis
- Headlights Automatic High Beam
- Headlights Automatic On/Off
- Mobiley® Lane Tracking and Lane Departure Warning System
- Module Cummins Accumen on Freightliner® Chassis

**OPTIONS**

- Spartan® K2 Tag Axle 450Hp on 40'–43'
- OnGuard™ Collision Mitigation Adaptive Cruise System with Adj. Following Distance Control on Freightliner® or Spartan® Chassis

**AIR CONDITIONING & HEATING**

- Two 15M Penguin™ Heat Pump Air Conditioners on 37' and 40' Models
- Three 15M Penguin™ Heat Pump Air Conditioners, Energy Management System, and 10kW Onan Generator on 43' Floor plans
- Chinook Dual Loop Heat with Continuous Hot Water
- Dash Heater and Air Conditioner
- Driver and Passenger Dash Overhead Ventilation System
- Wall Mounted Sensors for Heating and Air Conditioning
- Roof Air Conditioning Drainage System

**OPTIONS**

- Electric Radiant Heat Installed Below Main Floor Tile

**ELECTRICAL FEATURES**

- 8.0 kW Cummins Onan® Quiet Series Diesel Generator on Slideout Tray
- 10.0 kW Onan Generator on Slides 43'
- 50 Amp Electrical Service with Flexible Cord with Automatic Transfer Switch
- Six 6-Volt House Batteries on Pull-Out Tray
- Battery Disconnect Switch for House Battery
- 10 Watt Solar Panel to Charge Chassis Battery
- 12 Volt Auxiliary Receptacle on Dashboard
- Emergency Engine Start Switch
- Engine Block Heater
- Energy Management System
- Exterior Security Lights
- Mid-Ship Side Turn Signals
- LED Lights Recessed in Ceiling and Underneath Overhead Cabinets
- Accent Lights in Slideout Fascia Trim

- LED Lights in Pantry to Come on When Door is Open
- Lights in Exterior Storage Compartments
- LED Lights Installed Under Door Side Slideouts
- Manually Operated Hold-To-Run Slideout Switch
- Automatic Generator Start on Low Battery or Temperature Setting
- Cable TV Connection
- Interior Courtesy Lights
- Lights in Wardrobe
- Reading Lights at Head of Bed-Dimmable with Adjustable Aim
- USB Outlet at Dinette and Bedroom Night Stand
- USB Outlet at Dash for Driver Use
- Power Rewind Wheel with 50' Cord\*
- KIB Backlight Switch Plates for Interior Lighting
- KIB Switches for Interior Lights
- Spare Fuses in the Chassis and House Fuse Panels
- Wireless Charging Mat Built into Dash for Driver Use
- Wireless Charging Mat Built into Passenger Console
- 110 Volt Recept in Bed Overhead with Two Pass-Through Ports
- 110 Volt/USB at Head of Each Bunk\*
- Multiplex Monitor System 10.1" in Center of Coach with Interior Lighting and HVAC Controls
- Dash Radio, Cameras and Monitors to Power-Up from both House Batteries and Ignition
- Connected Solutions App to Control Numerous Features from Personal Device

**OPTIONS**

- Four Flexible 100 Watt Solar Panels on Roof
- Recessed Docking Lights
- Solar Prep Rated with 6 Gauge Wire Ran from Roof to House Battery Compartment
- Transfer Switch with Surge Protector

**PLUMBING & BATH FEATURES**

- Demand Water System
- Sewage Holding-Tank Rinse
- Dometic® 321 China Bowl Stool or Macerator Stool\*
- Solid Surface Shower Walls with Glass Door\*
- Fold-Down Shower Seat
- Water Filter for Entire Unit
- Exterior Shower
- Auto Fill Water Works Compartment
- Power Water Hose Reel

Aqua Miser® Shower System

Bladder Tank for Water Pump System

#### OPTIONS

Assist Handle in Shower

Hot Water Line to Generator Area\*

RV Sanicon Turbo System

### INTERIOR FEATURES

Designer Feature Ceiling and Cathedral Ceiling with Added Height on Rear Bath Floor Plans\*

Tile Floor in Kitchen, Bathroom, Bedroom and Living Area

Interior Assist Handle at Main Entry Door

Power Stepwell Cover

Fitted Non-Quilted Bedspread with Accent Pillows

Decorative Wall Art

Hardwood Raised Panel Interior Passage Doors

Dash Panel Color Coordinated ABS

MCD Window Shades

MCD Power Shades at Windshield and Manual Shades at Driver and Passenger Side Windows

Wastebasket in Kitchen Base Under Sink

#### OPTIONS

Safe Located in Bedroom Wardrobe

MCD Power Window Shades with Remote Control

Shoe Storage Shelves Recessed into Rear Cap Wardrobe

### CABINETS & FURNITURE

Bermuda Glazed Maple Hardwood Cabinets with Mitered Raised Panel Doors with Matte Finish

Concealed Hinges on Cabinet Doors

Soft-Close Cabinet Drawers

Push-to-Release Drawer Slides in Pantry

Pull-Out Pantry Shelves\*

Drawers with Full Extension Ball Bearing Guides

Passenger Seat Work Station

Super Polished Solid Surface Countertop in Kitchen with Undermounted Stainless Steel Sink and Sink Covers

Super Polished Solid Surface Countertop in Bathroom and Bedroom

Cooktop Cover Flush, Matching Countertop Material

Ultrafabric Sofa and Front Seats

Front Seats Six Way Power, Power Lumbar, Power Footrest, and Manual Recliner

Passenger Seat-Standard Width (Same as Driver Seat)

Driver Seat with Vibrator for Mobileye® System

Dinette Euro Booth with Two Table Leaves and Two Folding Chairs\*

Villa Comfort Fit Furniture

Lifts on Bed Top

Plush Pillow Top Mattress

Dinette with Power Adjusted Table, Bench Seat and a Folding Chair on 4311 Wheelchair Accessible Floor Plan

Extended Rotation Concealed Hinge for Washer and Dryer Cabinet Door

Mesh Cell Phone Holder at Each Bunk Bed\*

Molded Silverware Divider Tray

#### OPTIONS

Bermuda Glazed Maple Hardwood Cabinets with Mitered Raised Panel Doors-High Gloss

Driftwood Glazed Maple Hardwood Cabinets with Mitered Raised Panel Doors-Matte or High Gloss Finish

Toffee Glazed Maple Hardwood Cabinets with Mitered Raised Panel Doors-Matte or High Gloss Finish

Glacier Glazed Maple Hardwood Cabinets with Mitered Raised Panel Doors-Matte or High Gloss Finish

Two Recliners with Lampstand and Reading Lights\*

Two Recliners with Reading Lights\*

Two Recliners, Lampstand, Reading Lights, Off Door Side, Trifold Sofa

Two Recliners, Lampstand, Reading Lights, Off Door Side with Hide-A-Bed Memory Foam Mattress

Two Ottomans\*

Adjustable Support Air Bed

Buffet Dinette with Free Standing Table

Buffet Dinette, Two Fixed/Two Folding Chairs

Buffet Dinette, Two Fixed/Two Folding Chairs on 4311

Combination Desk with Buffet Table, Two Fixed/Two Folding Chairs

Combination Desk with Buffet Dinette Table, Two Fixed/Two Folding Chairs

Combination Desk/Dinette with Free Standing Hidden Leaf Table, Two Fixed/Two Folding Chairs

Euro Booth Dinette with Two Table Leaves, Removable Table Leg and Two Folding Chairs

Dinette Convertible with Two Fixed/Two Folding Chairs that Face to Window

Fixed Bed Base Lowered King or Queen Bed with Axel Bloom Mechanism, Air Mattress

Queen Bed with Wardrobe and 57" X 36" Roll in Shower on 4311

Powered Theater Seating 74"\*

Powered Theater Seating 74" with Reading Lights

Powered Theater Seating 87"

Powered Theater Seating 87" with Reading Lights





Heated Driver and Passenger Seats
Full Height Bed Base on King or Queen Bed on 4311
Bunk Beds to Convert to Wardrobe
Passenger Seat Extra Wide

**APPLIANCES & ACCESSORIES**

Stainless Steel Convection Microwave with Three Burner Recessed Gas Cooktop
Air Horns
Whirlpool® 19.7 Cf. Refrigerator with 2000 Watt Pure Sine Inverter
Prep for Two-Piece Washer and Dryer
Fireplace in Living Area*

<b>OPTIONS</b>
30" Stainless Steel Convection Microwave in Kitchen Overhead on 4311
All Electric, Flush Mount Induction Cooktop, 8 AGM Batteries, and 2800 Watt Inverter
All Electric, Flush Mount Induction Cooktop, Lithium Ion 640 AHR Battery System with One 2800 Watt Inverter
Dishwasher in Drawer with Stainless Steel Front
Central Vacuum Tool Kit
Dometic® 3.0 Cf. Freezer on Pull-Out Tray in Exterior Compartment
Electric Prep for Freezer (110 and 12 Volt) without Tray
Splendide® Two-Piece Stacked Washer and Dryer
Beverage Center with Wine Cooler and Stemware Rack on 4325 Floor Plan Only

**AUDIO, VIDEO & ACCESSORIES**

Samsung® LED TV in Living and Bedroom Areas* (TV Sizes Vary Per Floor Plan)
Samsung® 50" 4K LED TV on Televator in Living Area*
Dash Radio with Harman/JBL 180 Watt Sound System and Subwoofer
Rearview Color Monitor System with Audio
Satellite Dish Prep on Roof
Two Bedroom Radio Speakers

TV Jack and 110 Volt Recept in Door Side Exterior Storage Compartment
Bluetooth Microphone for Dash Radio
Bose® Soundbar Sound System
High Definition Component Wiring
Side-View Cameras Displayed onto Rear View Monitor Screen
10 Bc Fire Extinguisher, Smoke Detector, Propane and Carbon Monoxide Detector
Winegard Rayzar Automatic Digital TV Antenna
Xite Dash Radio with Apple CarPlay, 9" Dual Monitor and Nav-N-Go Navigation System

<b>OPTIONS</b>
Radio Sirius® XM Capability (Does not include monthly subscription)
Samsung® 43" 4K LED TV in Front Overhead
Samsung® 50" Televator with Fireplace in Place of Front Overhead TV on 4311
Exterior Entertainment Center in Sidewall with Samsung® 32" 4K LED TV with Bose® Soundbar*
Exterior Entertainment Center in Sidewall with Samsung® 43" 4K LED TV with Bose® Soundbar*
Exterior Entertainment Center in Storage Compartment with Samsung® 43" 4K LED TV with Bose® Soundbar*
Omniview NS360 Camera System*
Prep for Ground Tripod Satellite Dish on Off Door Side with A/B Switch
Two-19" Skyworth TV/DVD Monitors at Each Bunk*
Universal Remote Control
Universal Toll Module
WiFi Ranger Denali/Spruce LTE
WiFi System Everest with Aspen Interior Router
Winegard Automatic Open Face SWM Satellite Dish-for DIRECTV Std/HD and In-Motion DIRECTV Std, DISH Std/HD
Winegard Automatic Dome Satellite Dish-for DISH Std/HD, DIRECTV Std. and Bell Canada
Winegard Automatic Open Face Satellite Dish-for DISH HD and Bell HD TV
Winegard Automatic Open Face Satellite Dish and Winegard In-Motion-for DISH Network
Winegard Automatic Open Face SWM Satellite Dish-for DIRECTV
Winegard In-Motion Dome Satellite Dish-for DISH Std/HD, DIRECTV Std. and Bell Canada

\*CHECK WITH DEALERSHIP ON FLOOR PLAN AVAILABILITY



### A. ROOF

- Fiberglass Roof
- Batten Insulation
- A/C Ducting
- 16" on Center Aluminum Rafter Framing
- Kraft Paper Vapor Barrier
- 5/8" Bead Foam
- 3/16" Panel
- Padded Vinyl Overlay

### B. SIDEWALL

- Interior Wall Panel
- 5/8" Bead Foam
- Kraft Paper Vapor Barrier
- Batten Insulation
- Composite One-Piece Gelcoat Exterior Sidewall
- Aluminum Framing

### C. FLOOR

- Carpet/Tile
- Carpet Padding
- 5/8" Floor Decking
- Batten Insulation
- 16" on Center Wood Framing
- Polyethylene Moisture Barrier

### D. EXTERIOR

- 15M Penguin™ Heat Pump Central Air Conditioner
- One-Piece Bonded Windshield
- Coated Aluminum Wheels
- Frameless, Double-Pane, Tinted Safety Glass Windows
- Side-Hinged Baggage Doors with Optional Pull-Out Tray

# THE NEWMAR CUSTOMER EXPERIENCE

The Newmar difference goes beyond our industry-leading motor coaches to provide you with an unrivaled ownership experience.



## QUALITY FROM THE START

Every Newmar is crafted one at a time by folks who have spent an average of eight years building them. And each coach we assemble must undergo more than 1,000 tests and checks before ever leaving our factory.



## CAREFULLY SELECTED DEALERS

We view our dealership network in terms of quality, not quantity. Each of our dealers acts as a partner in our shared mission to exceed your highest of expectations, for an ownership experience that's second to none from day one.



## EVERYTHING IN ONE PLACE

As a Newmar owner, you'll find resources specific to your coach through Newgle, an easy-to-use knowledge base that houses everything from user guides to technical support documents.



## FRIENDS FOR LIFE

Meet fellow owners through the Newmar Kountry Klub, a top social club for RV travelers that hosts rallies and other special events throughout the U.S. and Canada.



## SEAMLESS SERVICE

When you join the Newmar family, we pair you with a dedicated service specialist with expert knowledge of your exact coach. Our service specialists guarantee dealer warranty authorizations within four business hours and ship all in-stock parts the same day, free of charge.



## ROCK-SOLID PROTECTION

All models include a one-year/unlimited mileage limited warranty and a five-year, non-transferable structural warranty that covers your coach's superstructure in the event it fails to perform. Ask your Newmar dealer for more details.

# OUR PARTNERS

Newmar Quality Begins with the Company We Keep

You deserve class-leading performance from names you can trust. That's why we only work with suppliers dedicated to providing our customers with unrivaled quality, comfort, and support.

## **BASF**

We create chemistry

The Coatings division of BASF is a global expert in the development and production of innovative and sustainable OEM and refinish coatings that deliver solutions beyond your imagination.



## **INDUSTRIAL FINISHES**

Industrial Finishes has supported RV manufacturers for over four decades. The Industrial Finishes paint process delivers uncompromising quality, providing your coach with a true "Masterpiece" finish.



Driven By You

## **FREIGHTLINER CUSTOM CHASSIS**

Freightliner® Custom Chassis Corp. (FCCC) is renowned for delivering the industry's best ownership experience through exceptional 24/7 factory-direct support, exceptional ride and handling, and developing high-performance innovations such as DRIVETECH. It's the only RV driving system that prioritizes safety and automotive luxury by putting every command at your fingertips.



## **RIVERPARK**

At RiverPark, we proudly represent the leading brands in consumer electronics—brands you know and trust to provide exceptional quality and innovative technology. Newmar features Samsung's incredible 4K TVs, Xite Infotainment systems featuring Nav-N-Go Navigation, Bose® soundbars, and JBL and Infinity premium audio. Step into a 2023 Newmar and experience dazzling audio and video performance throughout the coach.



**RV CHASSIS**

## **SPARTAN MOTORS**

Spartan® Motors is an American company with over 30 years of experience designing and manufacturing the premier motorhome chassis, which provides superior performance, exceptional safety ratings, and industry-leading technology.





WHEN YOU KNOW THE DIFFERENCE<sup>SM</sup>