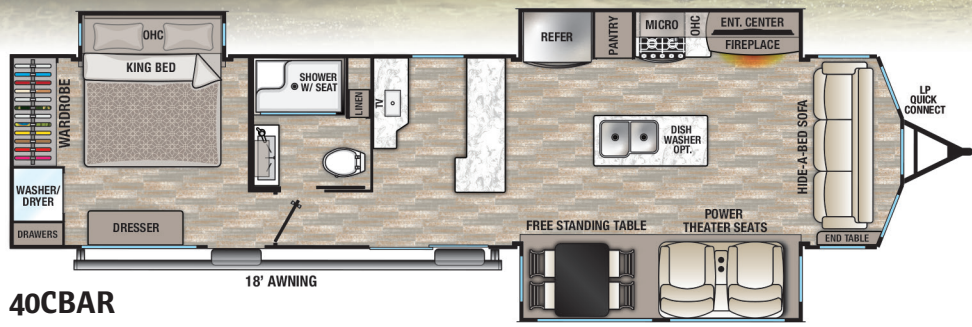


# COTTAGE

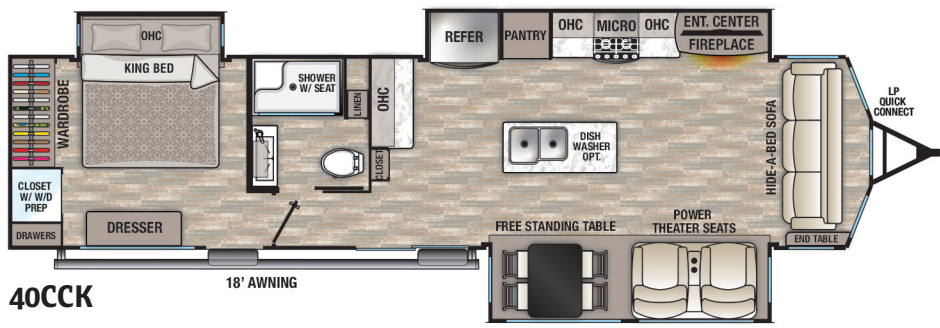
BY CEDAR CREEK



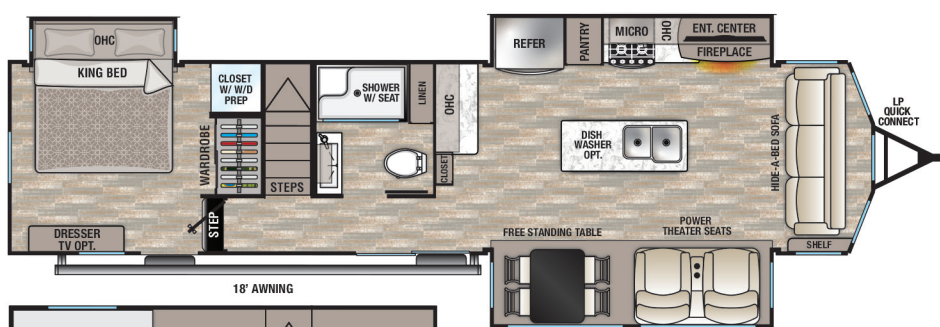
*The Smart Choice for the Experienced RV'er*



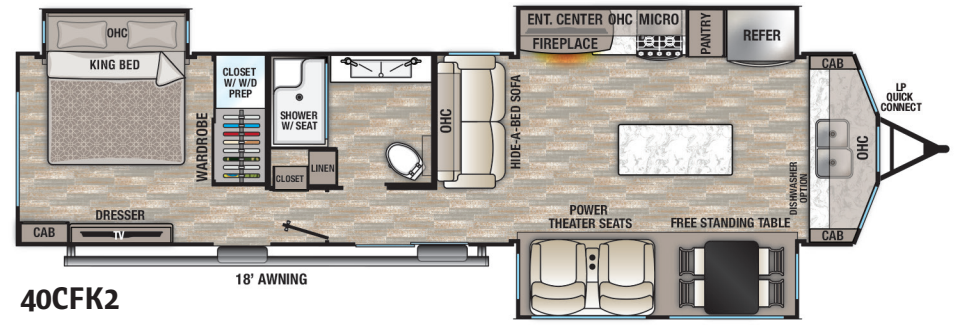
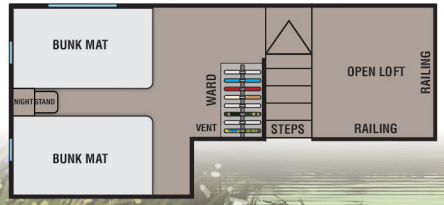
**40CBAR**



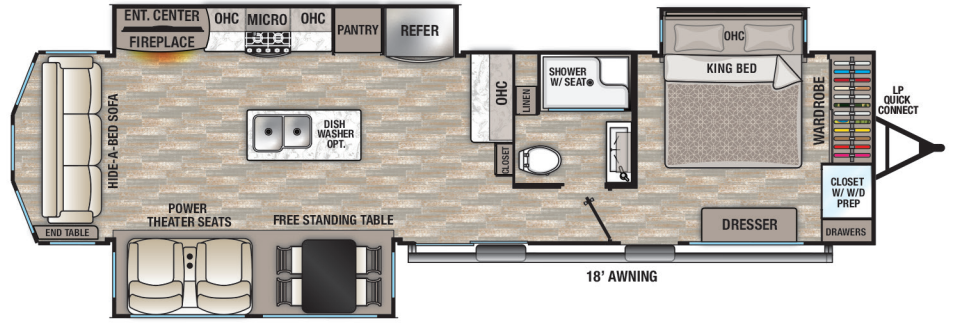
**40CCK**



**40CDL**



**40CFK2**



**40CRS**





## FEATURES

### Exterior Features

- 102" Wide Body
- 50 Amp Service
- Hitch Light
- ABS Ribbed Underbelly Panels with No Screws into the I-Beam Frame
- Decorative Front Cap with Molded Picket Fence
- Dexter® Heavy Duty Axles with Heavy Duty Link Plates and Shackles
- 16" 6-Lug, ST, "E" Tires
- Electric Awning with LED Night Lighting Strip
- Enclosed and Triple Layered Insulated Underbelly (R-45)
- Large Surface 12V Heating Pads on All Holding and Fresh Water Tanks
- Lighted Entry Step
- Porch Light
- Selector Switches for Slide Rooms
- Clamp Ring Windows with Butyl Rubber Seals
- 5/8" Tongue and Groove Plywood Floor
- Thermal Pane Patio Door



### Living Room Features

- Large Full View Windows
- 12V Home Theater System and Control App for Your Smart Phone
- Dual Pane Patio Door
- 36" Fireplace with Thermostat
- Shaw Carpeting on Dining Slide
- LED Lighting
- Satellite and Cable Hook-ups
- Solid Wood Fascia Redesign
- New Decorative Paneling

### Kitchen Features

- Redesigned Island with LED Back Lighting
- New, One-piece Backsplash
- Create-A-Breeze Fantastic Fan with Thermostat and Rain Sensor in Kitchen
- Stainless Steel 30" Over-the-range Microwave with Built-in Vent
- Full Pantry in the Kitchen Area
- Ashley Grey Cabinet Doors with High Sheen Glaze and Hidden Hinges

- Crown Molding Complementing All Overhead Cabinets in Kitchen Area
- Free-standing Table with Hidden Table Leaf Extension and (4) Chairs

### Bedroom Features

- Redesigned Bedroom Package with Shiplap Headboard and King Bed Pillow Package
- Satellite and Cable Hook-ups
- Bedroom Roof Vent
- 2" x 2" Finished Bed Base with Gas Lifts
- Side Ventilation Windows
- Ceiling Mounted, Individually Switched, Overhead Reading Lights in Slide
- 6 Drawer Dresser
- Solid Wood Dresser Top

### Bathroom Features

- Newly Redesigned Bathroom with Residential, Single Basin, Trough Sink (Double faucet sink in 40CFK2 only)
- 18" Tall Porcelain Toilet with Circular Flow Flush System
- One-piece, 48" x 30" Fiberglass Shower
- 10-Blade Bathroom Breeze Power Bath Vent with Convenient Wall Switch
- Bath Towel Rack and Toilet Paper Holder
- Large, Double Stack Bathroom Mirror Medicine Cabinet with Overhead Makeup Lights
- Linen Cabinet

### Miscellaneous Features

- 20 Gallon Electric Water Heater
- (2) 15,000 BTU "HP", Whisper Quiet, Air Conditioners
- King WiFi Router/Range Extender
- 12V Battery Disconnect
- LP Gas/Carbon Monoxide Detector
- Dometic® Climate Control with Dual Zone Heating and Cooling
- Smoke Detector
- Cedar Creek Switch Control Center
- Solid State 55 Amp Power Converter
- Washer/Dryer Prep
- One-year SafeRide RV Roadside Assistance
- FREE Membership to the Forest River Owner's Group (F.R.O.G.)

### COTTAGE ADVANTAGE PACKAGE

- (Mandatory Features)
- "True" High Gloss, Gelcoat Exterior
  - Cedar Creek's Famous All Aluminum Construction
  - Detachable Hitch
  - (4) Sets of Stabilizer Jacks
  - Quick Disconnect LP Gas Lines
  - Deluxe Hide-A-Bed Sofa
  - Ceiling Fan (Living Room)
  - 20 Cu. Ft., Stainless Steel, Electric Refrigerator
  - Insignia 24" Freestanding 4-Burner Gas Range
  - Solid Surface Countertops
  - 72" x 80" King Mattress
  - Deluxe Day/Night Roller Shades (Day - N/A in bedroom)

### COTTAGE CONVENIENCE PACKAGE

- 50" Insignia Television with Swing Arm
- Intra-vac Central Vacuum System
- Power Theater Seating with USB Ports on Each Side
- Congoleum® Flooring in Living Room and Bedroom
- Self Closing Drawer Guides
- Washer & Dryer Prep
- Power Theater Seating
- USB Ports In Kitchen & Bedroom
- 32" TV in Bedroom
- Ceiling Fan in Bedroom (N/A 40CDL)
- Variable Speed Power Fan w/Rain Sensor Override
- King WiFi Router/Range Extender
- 20 Gallon Electric Water Heater
- (2) 15,000 High Performance, Quiet Zone A/C's

MODEL	40CBAR	40CCK	40CDL	40CFK2	40CRS
GVWR	TBD	13835 lb.	TBD	13745 lb.	13565 lb.
Hitch Weight	TBD	1835 lb.	TBD	1715 lb.	1565 lb.
UVW	TBD	11304 lb.	TBD	11509 lb.	11499 lb.
CCC	TBD	2531 lb.	TBD	2236 lb.	2066 lb.
Exterior Length	TBD	40' 3"	TBD	40' 4"	41' 4"
Exterior Height	12' 10"	12' 10"	12' 10"	12' 10"	12' 10"
Exterior Width	102"	102"	102"	102"	102"
On Demand Fresh Water	TBD	77 gal.	TBD	77 gal.	77 gal.
Gray Water	TBD	120 gal.	TBD	120 gal.	120 gal.
Black Water	TBD	40 gal.	TBD	40 gal.	40 gal.
Awning Size	18 ft.	18 ft.	18 ft.	18 ft.	18 ft.

**GVWR (Gross Vehicle Weight Rating)** - is the maximum permissible weight of the unit when fully loaded. It includes all weights, inclusive of all fluids, cargo, optional equipment and accessories. For safety and product performance do NOT exceed the GVWR.

**GAWR (Gross Axle Weight Rating)** - is the maximum permissible weight, including cargo, fluids, optional equipment and accessories that can be safely supported by a combination of all axles.

**UVW (Unloaded Vehicle Weight)\*** - is the typical weight of the unit as manufactured at the factory. It includes all weight at the unit's axle(s) and tongue or pin and LP Gas. The UVW does not include cargo, fresh potable water, additional optional equipment or dealer installed accessories.

\*Estimated Average based on standard build optional equipment.

**CCC (Cargo Carrying Capacity)\*\*** - is the amount of weight available for fresh potable water, cargo, additional optional equipment and accessories. CCC is equal to GVWR minus UVW. Available CCC should accommodate fresh potable water (8.3 lbs per gallon). Before filling the fresh water tank, empty the black and gray tanks to provide for more cargo capacity.

\*\*Estimated average based on standard build optional equipment.

Each Forest River RV is weighed at the manufacturing facility prior to shipping. A label identifying the unloaded vehicle weight of the actual unit and the cargo carrying capacity is applied to every Forest River RV prior to leaving our facilities. The load capacity of your unit is designated by weight, not by volume, so you cannot necessarily use all available space when loading your unit.

All information contained in this brochure is believed to be accurate at the time of publication. However, during the model year, it may be necessary to make revisions and Forest River, Inc., reserves the right to make all such changes without notice, including prices, colors, materials, equipment and specifications as well as the addition of new models and the discontinuance of models shown in this brochure. Therefore, please consult with your Forest River dealer and confirm the existence of any materials, design or specifications that are material to your purchase decision.

©2020 Cedar Creek. A division of Forest River, Inc., a Berkshire Hathaway Company. 8/20 Cottage



Learn More  
Scan this barcode using a QR Reader on your smart phone to learn more about Forest River.



## OPTIONS

### Exterior Options

- Thule, Slide Room, Power Awning
- Slide Room Awning Toppers (All available slides)
- Heat Pump on Main Air Conditioner

### Interior Options

- Shaw Carpeting in Living Room with Rebond
- Shaw Carpeting in the Bedroom with Rebond
- 30" Stainless Steel Convection Oven/Microwave
- Splendide, Front Loading, Washer and Dryer
- Fisher & Paykel, Dishdrawer™, Stainless Steel Dishwasher in Island

### Mattress Options

- 10" Luxury Queen Mattress
- 10" Luxury King Mattress

### Miscellaneous Items

- Self Regulating Bedroom Wall Heater by Cadet
- Dual Pane Tinted Windows



The Smart Choice for the Experienced RV'er

FOREST RIVER INC. CEDAR CREEK DIVISION

501 Hawpatch Road • Topeka, IN 46571

Phone: 260-593-2404

Parts & Service Phone: 260-593-4000

On The Web at: [www.forestriverinc.com/cedarcreek](http://www.forestriverinc.com/cedarcreek)

YOUR CEDAR CREEK COTTAGE DEALER