

2021 GAS MOTOR COACHES

BAY STAR SPORT / BAY STAR



Be Up for an Adventure

Any location is an exciting destination in your Bay Star Sport. One of our most popular gas coaches got an important new upgrade for 2021. Every 2021 Bay Star Sport is built exclusively on a next-generation Ford® F-Series Class A Motorhome Chassis. This new platform is powered by a 7.3-liter V8 engine, offering up 350 horsepower and 468 lb./ft. of torque—20% smaller and 30 pounds lighter than last year's model. The Bay Star Sport is ready to go where the wind takes you.





Live the Nomad Lifestyle 2021 Bay Star Sport

Eight floor plans and a myriad of innovative features and options make the Bay Star Sport perfect for road trips that fit your lifestyle. New, heavier duty sway bars keep the drive smooth. The new engine is also partnered with the Ford TorqShift® automatic overdrive transmission to make towing your get-around vehicle a breeze.

Bellini full-paint Masterpiece™ finish

Excitement in Style

The 2021 Bay Star Sport offers the amenities of home while you're out on the road. After a day out adventuring, catch up on your favorite shows with a standard Samsung® LED TV and Sony® DVD player. Post your latest videos and updates with one of three available Wi-Fi packages. Or just sit back and enjoy the tasteful décor of the living space.



**The furniture in your coach will differ slightly from the images.*

Floor plan 3014 with Bellini décor and Calypso Glazed Maple cabinetry



**The furniture in your coach will differ slightly from the images.*

A New Destination

Your next exciting trip always begins with the cockpit. The new chassis also features an updated driver's station. A new steering column leads to a redesigned steering wheel, with integrated cruise control and dash menu interface switches. The instrument cluster has been modernized and rotary headlight switches are now included. LED lights keep the living space bright, while you enjoy the comfort of a deluxe sofa. You'll also find plenty of storage space in the standard dinette with pull-out drawers—or choose other configurations including a Euro booth.



**The furniture in your coach will differ slightly from the images.*



Eat on the Go

The galley of the Bay Star Sport is spacious and well-appointed. Roomy cabinets and a large optional pantry—with hardwood doors and concealed hinges—are perfect for storing necessities and small kitchen appliances, plus there's even more space in drawers and base cabinets. A cooktop, microwave, and Norcold® fridge all come standard to make cooking something delicious easy, and a polished countertop surrounds a stainless steel double-bowl sink.



**The furniture in your coach will differ slightly from the images.*



Sleep Inspired

Rest and relax in the Bay Star Sport master suite, with a queen-size mattress, designer headboard, and quilted bedspread—all upgraded to a king in floor plan 3226. Drift off to your favorite movies with a mounted Samsung® LED TV. The wardrobe, large dresser drawers, and nightstands mean there's plenty of space to bring along all of your gear—so no adventure is off-limits.



A Calm Interior

The master bathroom of the 2021 Bay Star Sport is there to help you clean up after a long day of adventuring—or just to be a space where you can relax. Several spacious shower options are available depending on the floor plan you choose, with sliding glass doors and handshower. And regardless of the floor plan, every shower features a skylight to let plenty of natural light in.

Clean Living

Featuring polished countertops surrounding an undermount sink, Bay Star Sport bathrooms also offer storage space in overhead cabinets and linen closet on some floor plans. If you're traveling with others, sleeping space is no problem when you outfit select floor plans with a drop-down bunk bed.





Ready to Go Anywhere

The Bay Star Sport is meant to take you places in comfort. With plentiful lit basement storage, you can bring all of your favorite adventure gear with you. Hydraulic leveling jacks, frameless windows, and a 4.0 kW Cummins Onan® generator—with optional upgrade to a 5.5 kW version—are additional features to make traveling easier. For more comfort inside, you can upgrade to two air conditioners. Outside, a standard Carefree Travel'r® power side awning keeps you in the shade.

Exterior and Interior Décor



BELLINI EXTERIOR

Awning Color: Black/Gray



BELLINI INTERIOR

a. Furniture/Fabric b. Carpet c. Counter Top



BOMBAY EXTERIOR

Awning Color: Black/Gray



FOSTER EXTERIOR

Awning Color: Sierra Brown



BOMBAY INTERIOR

a. Furniture/Fabric b. Carpet c. Counter Top



FOSTER INTERIOR

a. Furniture/Fabric b. Carpet c. Counter Top



ARCTIC GLAZED MAPLE

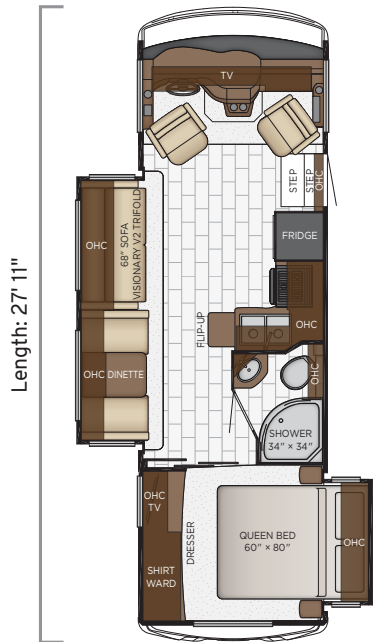


HARBOUR GLAZED MAPLE



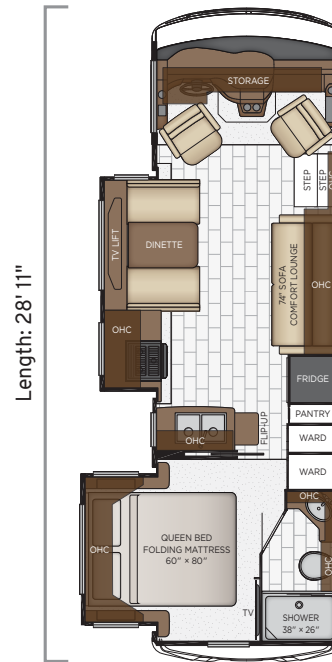
CALYPSO GLAZED MAPLE

Bay Star Sport



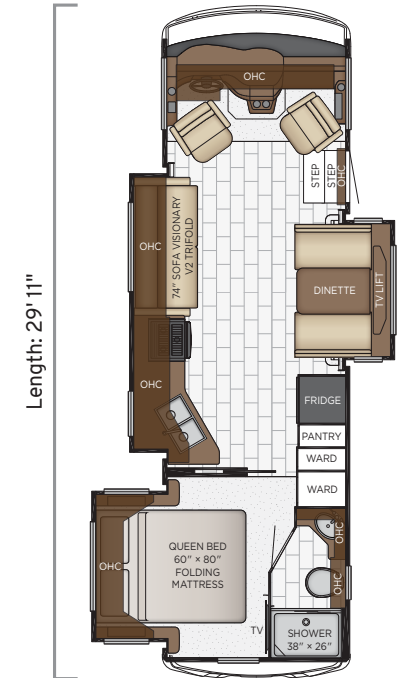
2702

| | |
|---------------------|------------|
| Length | 27'11" |
| Width | 101.5" |
| App. Overall Height | 12'04" |
| Interior Width | 95.5" |
| Interior Height | 80" |
| Grey Tank | 60 gal. |
| Sewage Tank | 40 gal. |
| Water Tank | 75 gal. |
| Propane Tank | 25 gal. |
| Furnace | 30,000 btu |



2813

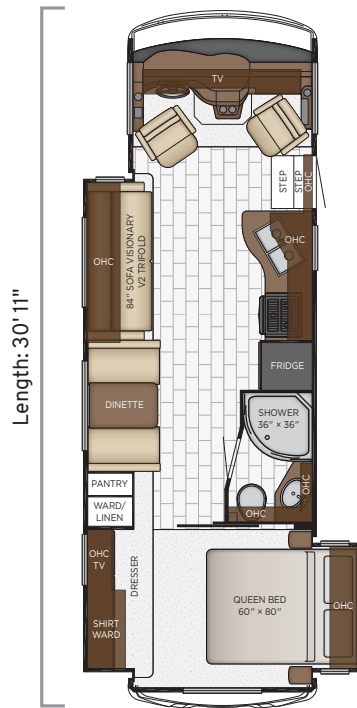
| | |
|---------------------|------------|
| Length | 28'11" |
| Width | 101.5" |
| App. Overall Height | 12'04" |
| Interior Width | 95.5" |
| Interior Height | 80" |
| Grey Tank | 60 gal. |
| Sewage Tank | 40 gal. |
| Water Tank | 75 gal. |
| Propane Tank | 25 gal. |
| Furnace | 30,000 btu |



Floor Plans

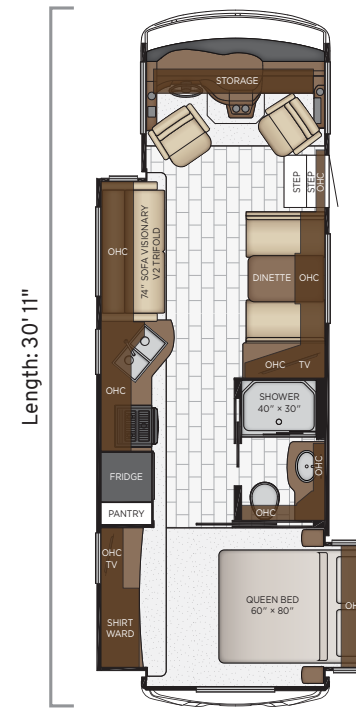
2905

| | |
|---------------------|------------|
| Length | 29'11" |
| Width | 101.5" |
| App. Overall Height | 12'04" |
| Interior Width | 95.5" |
| Interior Height | 80" |
| Grey Tank | 60 gal. |
| Sewage Tank | 40 gal. |
| Water Tank | 75 gal. |
| Propane Tank | 25 gal. |
| Furnace | 30,000 btu |



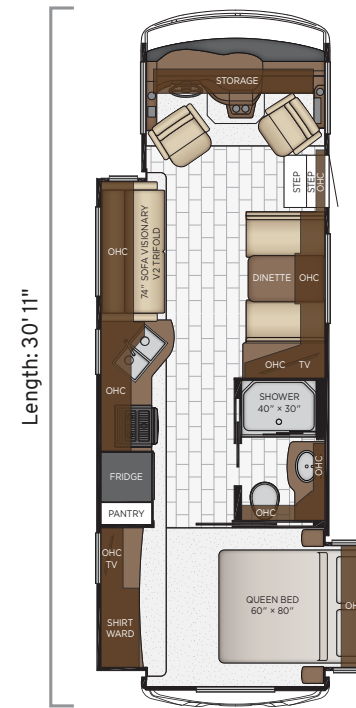
3008

| | |
|---------------------|------------|
| Length | 30'11" |
| Width | 101.5" |
| App. Overall Height | 12'04" |
| Interior Width | 95.5" |
| Interior Height | 80" |
| Grey Tank | 60 gal. |
| Sewage Tank | 40 gal. |
| Water Tank | 75 gal. |
| Propane Tank | 25 gal. |
| Furnace | 30,000 btu |

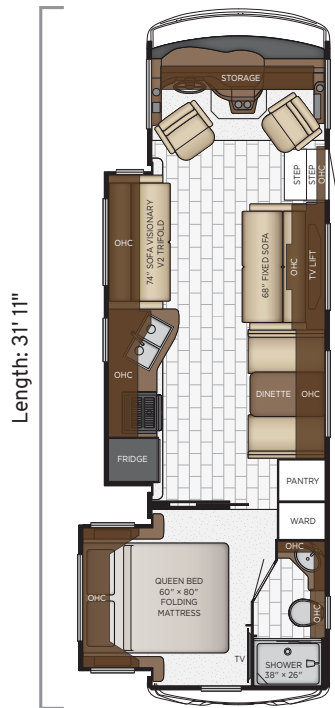


3014

| | |
|---------------------|------------|
| Length | 30'11" |
| Width | 101.5" |
| App. Overall Height | 12'04" |
| Interior Width | 95.5" |
| Interior Height | 80" |
| Grey Tank | 60 gal. |
| Sewage Tank | 40 gal. |
| Water Tank | 75 gal. |
| Propane Tank | 25 gal. |
| Furnace | 30,000 btu |



Floor Plans



Length: 31' 11"

3112

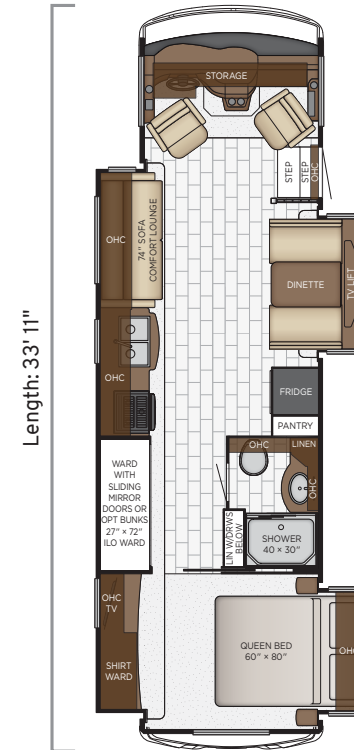
| | |
|---------------------|------------|
| Length | 31'11" |
| Width | 101.5" |
| App. Overall Height | 12'04" |
| Interior Width | 95.5" |
| Interior Height | 80" |
| Grey Tank | 60 gal. |
| Sewage Tank | 40 gal. |
| Water Tank | 75 gal. |
| Propane Tank | 25 gal. |
| Furnace | 30,000 btu |



Length: 32' 11"

3226

| | |
|---------------------|------------|
| Length | 32'11" |
| Width | 101.5" |
| App. Overall Height | 12'04" |
| Interior Width | 95.5" |
| Interior Height | 80" |
| Grey Tank | 60 gal. |
| Sewage Tank | 40 gal. |
| Water Tank | 75 gal. |
| Propane Tank | 25 gal. |
| Furnace | 30,000 btu |



Length: 33' 11"

3315

| | |
|---------------------|------------|
| Length | 33'11" |
| Width | 101.5" |
| App. Overall Height | 12'04" |
| Interior Width | 95.5" |
| Interior Height | 80" |
| Grey Tank | 60 gal. |
| Sewage Tank | 40 gal. |
| Water Tank | 75 gal. |
| Propane Tank | 25 gal. |
| Furnace | 30,000 btu |





EXTERIOR FEATURES

Exterior Full-Paint Masterpiece™ Graphics with Clearcoat Finish

Diamond Shield Protection on Front Cap

Lighted Exterior Storage Compartments

Automatic Step for Entrance Door

Convex Exterior Mirrors with Defrost and Remote Control

Rear Hitch for Towing Car

Assist Handle at Entrance Door

Undercoating

Mud Flaps

Smart Level Hydraulic Leveling Jacks with Bluetooth Compatible Touch Pad

OPTIONS

Rear Ladder

Flagpole Bracket

CONSTRUCTION FEATURES

BriteTEK™ Roof with Walkable Deck

Gelcoated Fiberglass Exterior Sidewalls, Front and Rear Caps

Aluminum-Frame Sidewalls and Roof Construction, on 16" Center

5/8" Foam Insulation Laminated in Sidewalls and Ceiling

Automatic Mechanical Lock Arms on Slideout Rooms- Scissor Style

OPTIONS

Egress Door with Ladder System*



WINDOWS, AWNINGS & VENTS

One-piece Tinted Windshield

Frameless Single-Pane Tinted Safety Glass Windows

Power Vent in Kitchen and Bathroom

Skylight Above Shower

Carefree Travelr® Side Awning

Rear Window in Bedroom*

OPTIONS

Slideout Covers, One Full, One Short

Slideout Covers, Two Short

Slideout Covers, Three Short

Frameless Double-Pane Tinted Safety Glass Windows

Bunk Windows

CHASSIS FEATURES

Ford® F-53 Chassis with 7.3Ltr V-8 Engine, 20,500 lb. on 27'-32' Floor Plans

Ford® F-53 Chassis with 7.3Ltr V-8 Engine, 22,000 lb. on 3315 Floor Plan

Cruise Control

Tilt Steering Wheel

Stainless Steel Wheel Simulators

Anti-lock Braking System

AIR CONDITIONING & HEATING

13.5M Brisk® Central Air Conditioner

Dash Heater and Air Conditioner

Propane Gas Furnace with Ducted Heat

Driver and Passenger Overhead Dash Fans

OPTIONS

15.0M Penguin™ Heat Pump Air Conditioner

Two 13.5 Penguin™ Heat Pump A/C, 5.5 Onan® Generator, 50 Amp Electrical Service with Energy Management System

ELECTRICAL FEATURES

4.0 kW Cummins Onan® Generator with Remote Switch and Automatic Changeover

30 Amp Electrical Service with Flexible Cord and Automatic Transfer Switch

Two 12 Volt House Batteries

Manual Battery Disconnect Switch for House Battery

12 Volt Auxiliary Receptacle on Dashboard

45 Amp Converter

Daytime Running Lights

Emergency Engine Start Switch

LED Interior Lighting

LED Strip Lighting Under Awning Mounted on Body of Coach

Manually Operated Hold-To-Run Slideout Switch

Cable TV Connection

USB Outlet at Dash for Driver Use

Drain Lift Pump with 1200 Inverter*

OPTIONS

1200 Watt Inverter Run to TVs*

1200 Watt Pure Sine Inverter for Bedbase, Nightstand and Overhead Cabinet Recepts



PLUMBING & BATH FEATURES

| |
|--------------------------------------|
| Demand Water System |
| Sewage Holding-Tank Rinse |
| Water Heater Bypass System |
| Dometic® 310 China Bowl Stool |
| ABS Shower Surround with Shower Door |
| Systems Monitor Panel |

INTERIOR FEATURES

| |
|--|
| Vinyl Ceiling Panels |
| Pleated Window Shades |
| Decorative Wall Art |
| Mini Blinds in Kitchen and Bathroom Windows |
| Vinyl Floor in Kitchen, Living Area and Bathroom |
| Carpeting in Bedroom and on Slideout Floors |
| Interior Assist Handle at Main Entrance Door |
| Quilted Bedspread and Accent Pillow |
| Inlaid Six-panel Design Interior Passenger Doors |
| Auto Motion Power Shade at Windshield and Manual Shades at Driver and Passenger Side Windows |
| Dash Panel Color Coordinated ABS |
| Integrated Window Blind System on Entry Door |

CABINETS & FURNITURE

| |
|--|
| Calypso Glazed Maple Mitered Designer Cabinet Doors-Matte Finish |
| Concealed Hinges on Cabinet Doors |
| Drawers Underneath Booth Dinette Seats |
| Drawers with Full Extension Ball Bearing Guides |
| Polished Solid Surface Countertop in Kitchen with Stainless Steel Sink |
| Solid Surface Countertops in Bathroom and Bedroom |
| Deluxe Leather Sofa and Front Seats |

| |
|--|
| Passenger Seat Work Station |
| Lifts on Bed Top |
| Smooth-Top Mattress |
| Mesh Cell Phone Holder at Each Bunk Bed* |
| Soft-close Cabinet Drawers |
| Six-way Power Driver Seat |
| OPTIONS |
| Harbour Glazed Maple Mitered Designer Cabinets-Matte Finish |
| Arctic Glazed Maple Mitered Designer Cabinets-Matte Finish |
| Drop-Down Bunk Bed Over Driver/Passenger Seats with Electric Release Latches and Bunk Ladder |
| Plush Pillow Top Mattress* |
| Folding Cockpit Table |
| 84" Fold-N-Tumble |
| Buffet Dinette |
| Combo Buffet Dinette, Two Fixed/Two Folding Chairs |
| King Bed* |
| Bunk Beds to Replace Wardrobe/Storage |

APPLIANCES

| |
|---|
| Three-Burner Range with Oven |
| Range Hood with Light and Fan |
| Microwave |
| Norcold® 8 Cf. Refrigerator |
| Raised Panel Refrigerator Door Insert |
| 6 gal. Gas/Electric Water Heater with Electric Ignition |
| OPTIONS |
| Norcold® 10 Cf. Refrigerator with Icemaker |
| Norcold® 12 Cf. 4-Door Refrigerator with Icemaker |
| Icemaker Added to Standard Norcold® Refrigerator |

AUDIO, VIDEO & ACCESSORIES

| |
|---|
| LED TV in Living Area (TV Sizes Vary per Floor Plan) |
| 32" LED TV in Bedroom |
| Dash Radio/CD Player with Harman/JBL 180 Watt Sound System |
| DVD Player with Coax Switcher |
| Rearview Color Monitor System with Audio |
| Side-View Cameras Displayed onto Rearview Monitor Screen |
| Winegard Digital Crank-Up TV Antenna |
| TV Jack and 110 Volt Recept in Door Side Exterior Storage Compartment |
| Satellite Dish Prep on Roof |
| 10 Bc Fire Extinguisher, Smoke Detector, Propane and Carbon Monoxide Detector |
| OPTIONS |
| WiFiRanger Sky4 Pack Router |
| WiFiRanger SkyPro LTE Cellular Router |
| Winegard Cellular In Motion WiFi |
| Sirius® Radio Capability with Antenna (Does Not Include Monthly Subscription) |
| Xite Dash Radio, 6" Monitor with Rand McNally Navigation |

*Check with dealership on floor plan availability.

The content in our literature depicts and describes products that are subject to change. For the most recent images and information, please visit NewmarCorp.com.



Quality Time All the Time 2021 Bay Star

In the 2021 Bay Star, amenities and innovations are paired seamlessly to make traveling—from long trips to long weekends—even more enjoyable. And now getting where you're going is even smoother with an updated chassis. Every Bay Star is built on a next-generation Ford® F-Series Class A Motorhome Chassis with standard Electronic Stability Control. It features a 7.3-liter V8 with 350 horsepower and 468 lbs./ft. of torque, plus new heavier duty sway bars for an even ride. You'll love your trip in a Bay Star—whether on a family vacation or a solo getaway.

Urban full-paint Masterpiece™ finish

Getting Away, Together

Family time is easy in the spacious cabin of the Bay Star. A comfortable living area with an Ultralux® sofa, six-panel pass-through doors, and vinyl flooring are all accentuated by LED lighting. A Samsung® LED TV and Sony® Blu-ray player are a must for movie nights—and you can elevate them with a Bose® soundbar and your choice of multiple Wi-Fi solutions. And the space is yours to customize with options like a fireplace, recliners, and storage ottomans.



**The furniture in your coach will differ slightly from the images.*

Floor plan 3626 with Urban décor and Arctic Maple Cabinetry



**The furniture in your coach will differ slightly from the images.*

Memories Made Everywhere

Sinking into comfort after a long day outside can't be beaten. With Ultralux® furniture throughout the living room in a variety of configurations, you'll always feel like you're living in the lap of luxury. From the jackknife sofa (with new memory foam mattresses in hide-a-bed versions) and optional ottomans to optional theater seating, bunk sofa, or recliners, you can pick your favorite way to relax. Get cozy next to an optional fireplace or cool off with the Penguin™ heat pump air conditioner. Lose yourself in the LED TV, Sony® Blu-ray players, and JBL speakers. And the luxury vinyl tile flooring means no worries about tracking in part of the trail with you.



**The furniture in your coach will differ slightly from the images.*



A Meal to Gather Round

Family meals are a core part of vacations, and the kitchen of the Bay Star is designed to make cooking and enjoying your food easy. A wood-panel refrigerator and Whirlpool® microwave come standard, plus an optional Suburban Elite three-burner cooktop features LED lighting on the knobs. More thoughtful design, like handmade cabinetry with concealed hinges and soft-close drawers, is included throughout. And for more flexibility, a Villa® Comfort Fit booth dinette comes standard—and it converts into an extra bed and offers pull-out storage drawers.





A Sleepover, Every Night

Bedroom options are meant for maximum flexibility in the Bay Star. In the master suite, you'll find a queen- or king-sized pillow top mattress, depending on your floor plan. A large dresser with drawer glides and a lit wardrobe mean packing plenty of whatever you need, no matter where you're going. An additional Samsung® LED TV and Blu-ray player mean you're never short on entertainment options.





A Space for Yourself

The master bath—standard on all Bay Star floor plans—offers a luxurious getaway when you need it. In addition to the ABS shower with sliding glass door, you'll find a solid surface sink top, vinyl flooring, medicine cabinet and additional storage, plus a shower skylight to let in some glorious natural light. Many floor plans also feature linen closets for towels, sheets, and other necessities for the whole family.

Space to Share

In addition to the master bath, floor plan 3609 features a mid-ship half-bath. It offers a corner vanity and many of the same appointments as the master bath. Another option in select floor plans is a stacked washer/dryer combo to save on trips to the laundromat. Plus, drop-down bunk beds over the driver and passenger seats are also available on select floor plans.

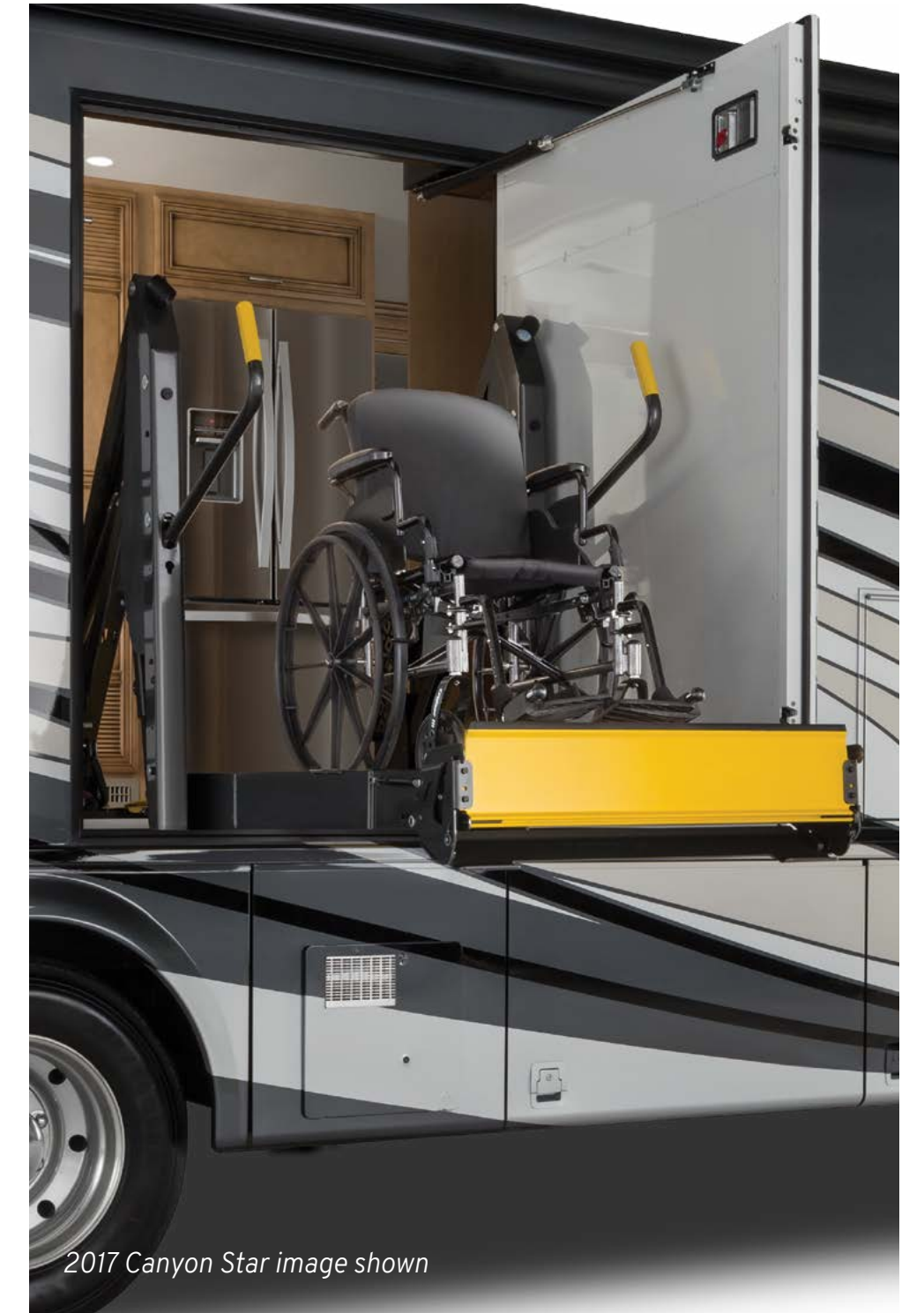




2017 Canyon Star image shown | Floor Plan 3911

An Option for Everyone

New for 2021, the Bay Star floor plan 3811 is designed for accessibility. You'll still find all of the amenities you'd expect from a Newmar coach, but with more wheelchair-friendly designs. A BraunAbility® electric lift on the large door is standard, along with a large 48" x 36" roll-in shower, larger wardrobe, and floor-to-ceiling mirrored doors. You'll also find more spacious areas throughout for more wheelchair accessibility.



2017 Canyon Star image shown



Entertaining Inside and Out

The 2021 Bay Star makes vacations easy, from campgrounds to going off the grid. Lit basement storage means you can bring fun-filled activities and equipment with you to better enjoy the trails and lakes. A 5.5 kW Cummins Onan® generator gives you plenty of power for amenities like the patio awning with LED lights so you can enjoy the outdoors well into the night. And don't miss out on the big game by opting for an outdoor entertainment center.

Exterior and Interior Décor



SENECA EXTERIOR

Awning Color: Charcoal Tweed



SENECA INTERIOR

a. Furniture/Fabric b. Carpet c. Counter Top



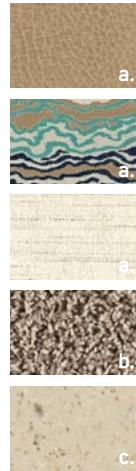
STERLING EXTERIOR

Awning Color: Charcoal Tweed



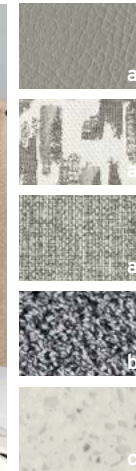
URBAN EXTERIOR

Awning Color: Charcoal Tweed



STERLING INTERIOR

a. Furniture/Fabric b. Carpet c. Counter Top

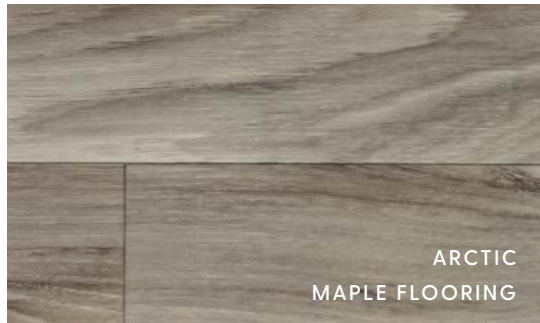


URBAN INTERIOR

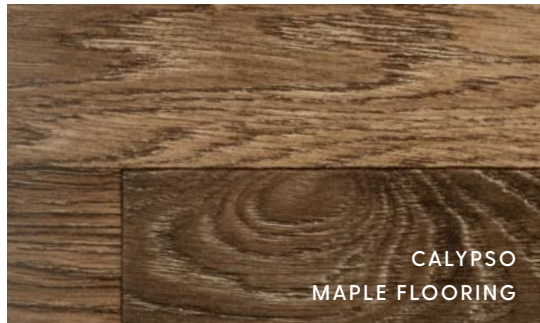
a. Furniture/Fabric b. Carpet c. Counter Top



Bay Star



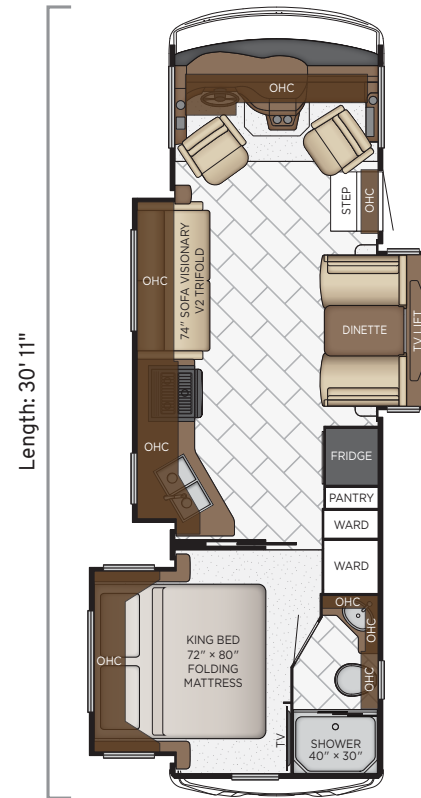
ARCTIC
MAPLE FLOORING



CALYPSO
MAPLE FLOORING



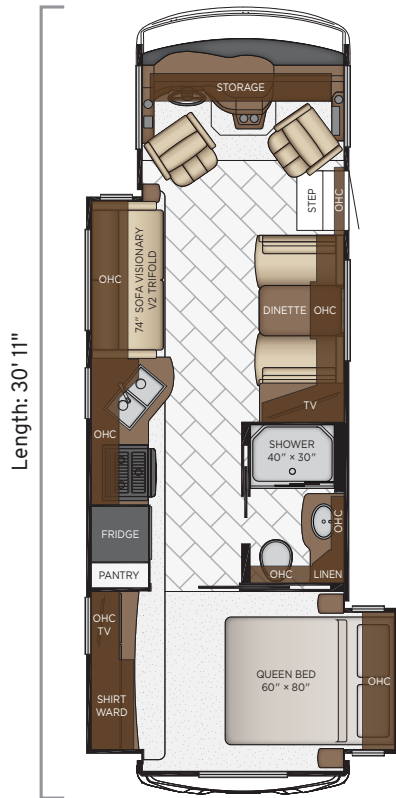
HARBOUR
MAPLE FLOORING



3005

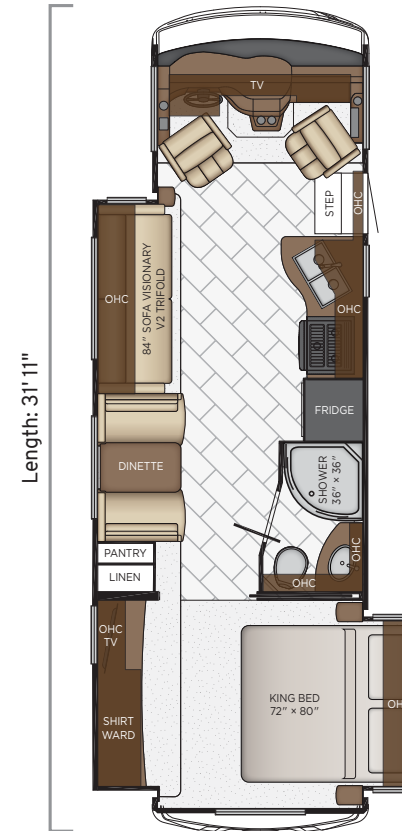
| | |
|---------------------|------------|
| Length | 30'11" |
| Width | 101.5" |
| App. Overall Height | 12'08" |
| Interior Width | 95.5" |
| Interior Height | 80" |
| Grey Tank | 60 gal. |
| Sewage Tank | 40 gal. |
| Water Tank | 75 gal. |
| Propane Tank | 25 gal. |
| Furnace | 40,000 btu |

Floor Plans



3014

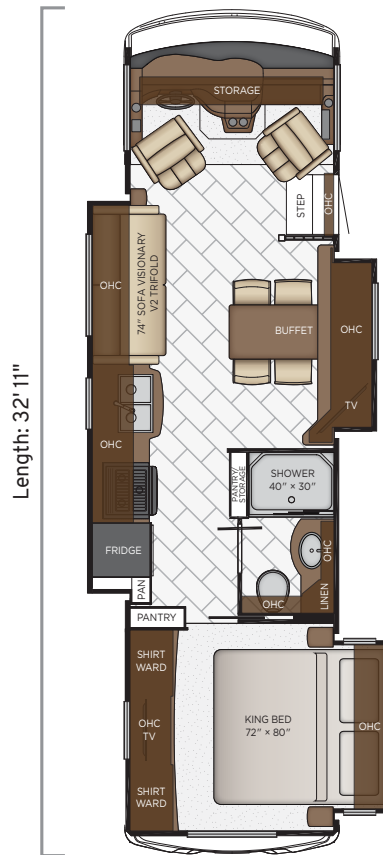
| | |
|---------------------|------------|
| Length | 30'11" |
| Width | 101.5" |
| App. Overall Height | 12'08" |
| Interior Width | 95.5" |
| Interior Height | 80" |
| Grey Tank | 60 gal. |
| Sewage Tank | 40 gal. |
| Water Tank | 75 gal. |
| Propane Tank | 25 gal. |
| Furnace | 40,000 btu |



3124

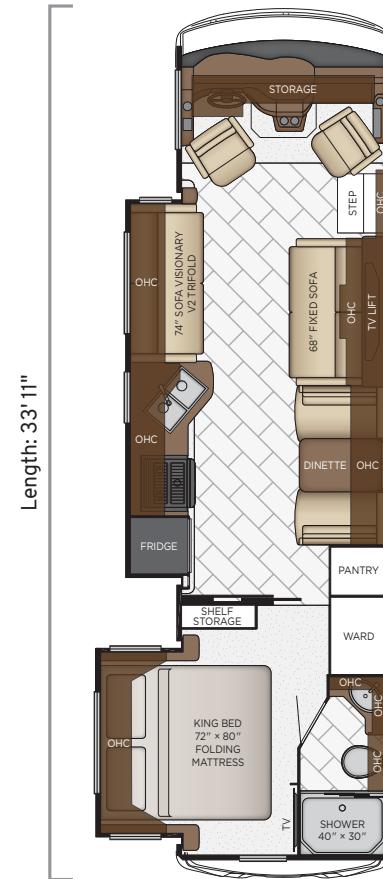
| | |
|---------------------|------------|
| Length | 31'11" |
| Width | 101.5" |
| App. Overall Height | 12'08" |
| Interior Width | 95.5" |
| Interior Height | 80" |
| Grey Tank | 60 gal. |
| Sewage Tank | 40 gal. |
| Water Tank | 75 gal. |
| Propane Tank | 25 gal. |
| Furnace | 40,000 btu |

Bay Star



3226

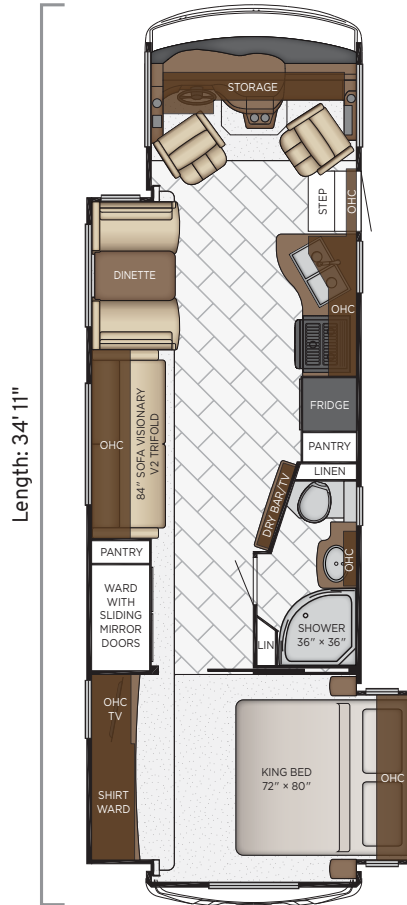
| | |
|---------------------|------------|
| Length | 32'11" |
| Width | 101.5" |
| App. Overall Height | 12'08" |
| Interior Width | 95.5" |
| Interior Height | 80" |
| Grey Tank | 60 gal. |
| Sewage Tank | 40 gal. |
| Water Tank | 75 gal. |
| Propane Tank | 25 gal. |
| Furnace | 40,000 btu |



3312

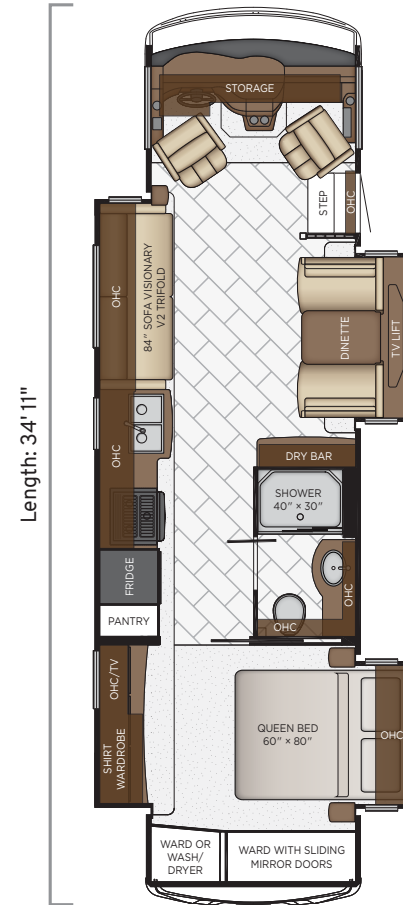
| | |
|---------------------|------------|
| Length | 33'11" |
| Width | 101.5" |
| App. Overall Height | 12'08" |
| Interior Width | 95.5" |
| Interior Height | 80" |
| Grey Tank | 60 gal. |
| Sewage Tank | 40 gal. |
| Water Tank | 75 gal. |
| Propane Tank | 25 gal. |
| Furnace | 40,000 btu |

Floor Plans



3401

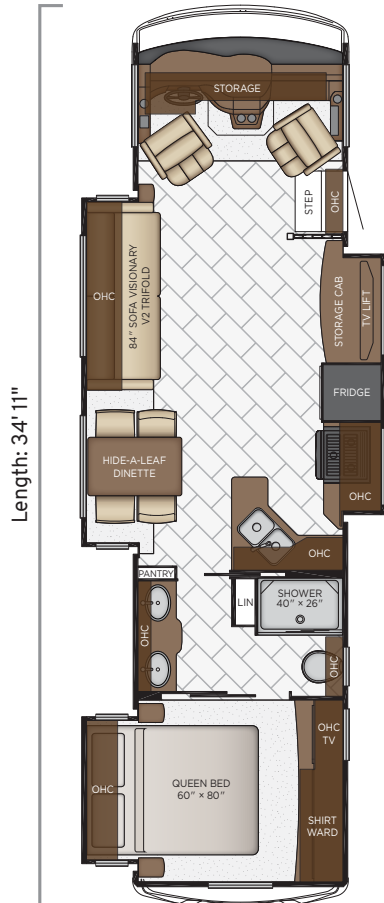
| | |
|---------------------|------------|
| Length | 34'11" |
| Width | 101.5" |
| App. Overall Height | 12'08" |
| Interior Width | 95.5" |
| Interior Height | 80" |
| Grey Tank | 60 gal. |
| Sewage Tank | 40 gal. |
| Water Tank | 75 gal. |
| Propane Tank | 25 gal. |
| Furnace | 40,000 btu |



3408

| | |
|---------------------|------------|
| Length | 34'11" |
| Width | 101.5" |
| App. Overall Height | 12'08" |
| Interior Width | 95.5" |
| Interior Height | 80" |
| Grey Tank | 60 gal. |
| Sewage Tank | 40 gal. |
| Water Tank | 75 gal. |
| Propane Tank | 25 gal. |
| Furnace | 40,000 btu |

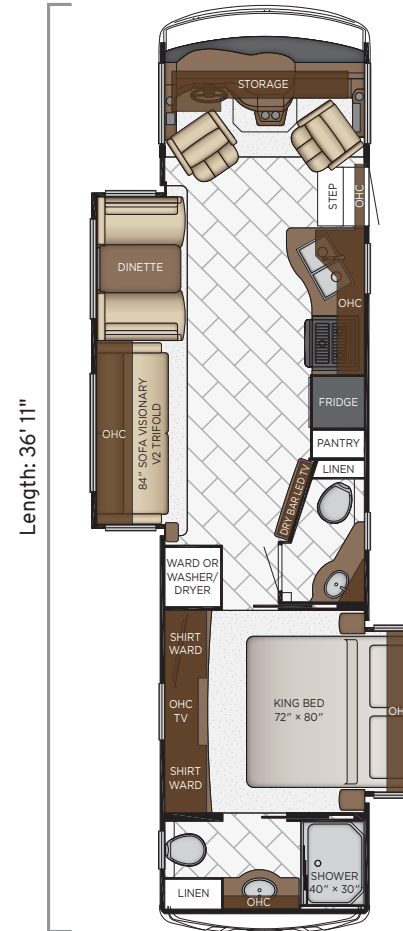
Bay Star



Length: 34'11"

3414

| | |
|---------------------|------------|
| Length | 34'11" |
| Width | 101.5" |
| App. Overall Height | 12'08" |
| Interior Width | 95.5" |
| Interior Height | 80" |
| Grey Tank | 60 gal. |
| Sewage Tank | 40 gal. |
| Water Tank | 75 gal. |
| Propane Tank | 25 gal. |
| Furnace | 40,000 btu |

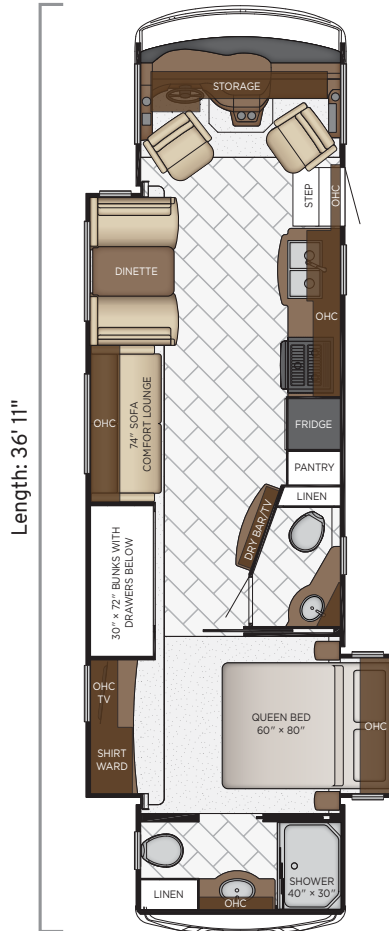


Length: 36'11"

3609

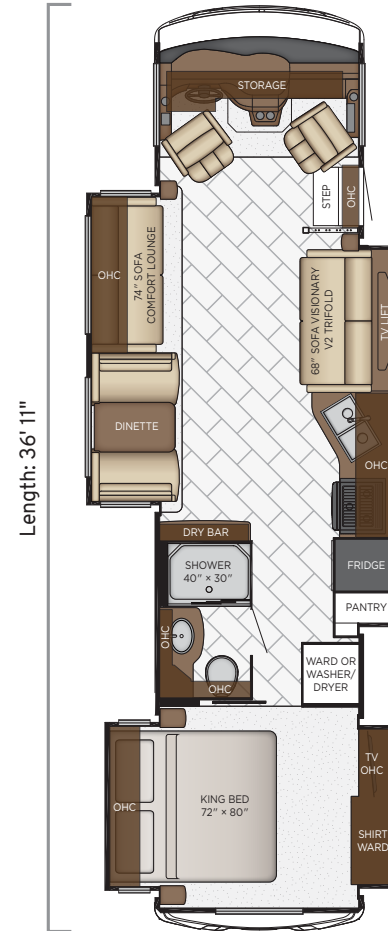
| | |
|---------------------|------------|
| Length | 36'11" |
| Width | 101.5" |
| App. Overall Height | 12'08" |
| Interior Width | 95.5" |
| Interior Height | 80" |
| Grey Tank | 60 gal. |
| Sewage Tank | 92 gal. |
| Water Tank | 75 gal. |
| Propane Tank | 25 gal. |
| Furnace | 40,000 btu |

Floor Plans



3616

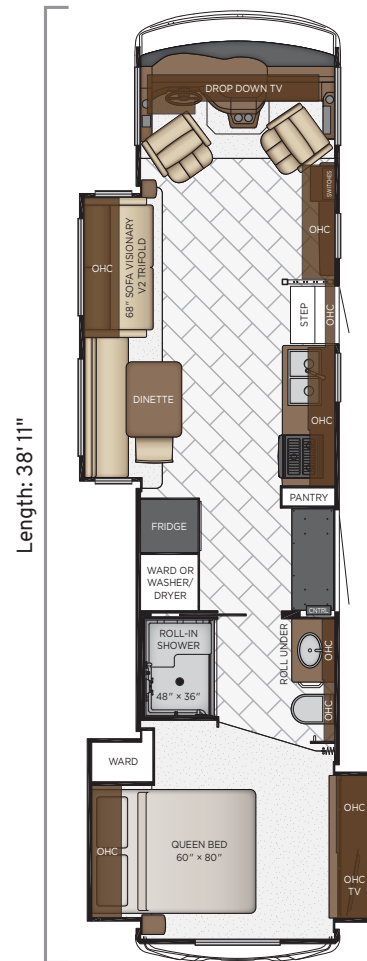
| | |
|---------------------|------------|
| Length | 36'11" |
| Width | 101.5" |
| App. Overall Height | 12'08" |
| Interior Width | 95.5" |
| Interior Height | 80" |
| Grey Tank | 60 gal. |
| Sewage Tank | 92 gal. |
| Water Tank | 75 gal. |
| Propane Tank | 25 gal. |
| Furnace | 40,000 btu |



3626

| | |
|---------------------|------------|
| Length | 36'11" |
| Width | 101.5" |
| App. Overall Height | 12'08" |
| Interior Width | 95.5" |
| Interior Height | 80" |
| Grey Tank | 60 gal. |
| Sewage Tank | 40 gal. |
| Water Tank | 75 gal. |
| Propane Tank | 25 gal. |
| Furnace | 40,000 btu |

Floor Plans



Length: 38'11"

3811

| | |
|---------------------|------------|
| Length | 38'11" |
| Width | 101.5" |
| App. Overall Height | 12'08" |
| Interior Width | 95.5" |
| Interior Height | 80" |
| Grey Tank | 60 gal. |
| Sewage Tank | 40 gal. |
| Water Tank | 75 gal. |
| Propane Tank | 25 gal. |
| Furnace | 40,000 btu |



Quality You Can Feel

Like a fine home, the 2021 Bay Star Sport and Bay Star are framed 16 inches on center, and are covered by a BriteTEK™ roof with an integrated gutter rail.

| BAY STAR SPORT | | | | | | | | | | | |
|----------------|-----------|------------|-----------|------------|------------|-----------|----------|-----------|-----------|-----------|----------|
| FLOOR PLAN | ENGINE HP | AXLE RATIO | FUEL CAP. | WHEEL BASE | FRONT GAWR | REAR GAWR | TAG GAWR | GVWR | GCWR | APP. UVW | APP. NCC |
| 2702 | 350 | 5.86 | 80 gal. | 178 | 7500 lb. | 13500 lb. | n/a | 20500 lb. | 26000 lb. | 15510 lb. | 4990 lb. |
| 2813 | 350 | 5.86 | 80 gal. | 184 | 7500 lb. | 13500 lb. | n/a | 20500 lb. | 26000 lb. | 16220 lb. | 4280 lb. |
| 2905 | 350 | 5.86 | 80 gal. | 190 | 7500 lb. | 13500 lb. | n/a | 20500 lb. | 26000 lb. | 17200 lb. | 3300 lb. |
| 3008 | 350 | 5.86 | 80 gal. | 200 | 7500 lb. | 13500 lb. | n/a | 20500 lb. | 26000 lb. | 16760 lb. | 3740 lb. |
| 3014 | 350 | 5.86 | 80 gal. | 196 | 7500 lb. | 13500 lb. | n/a | 20500 lb. | 26000 lb. | 17230 lb. | 3270 lb. |
| 3112 | 350 | 5.86 | 80 gal. | 200 | 7500 lb. | 13500 lb. | n/a | 20500 lb. | 26000 lb. | 17611 lb. | 2889 lb. |
| 3226 | 350 | 5.86 | 80 gal. | 208 | 7500 lb. | 13500 lb. | n/a | 20500 lb. | 26000 lb. | 17705 lb. | 2795 lb. |
| 3315 | 350 | 5.86 | 80 gal. | 234 | 8000 lb. | 15000 lb. | n/a | 22000 lb. | 26000 lb. | 18700 lb. | 3300 lb. |
| BAY STAR | | | | | | | | | | | |
| FLOOR PLAN | ENGINE HP | AXLE RATIO | FUEL CAP. | WHEEL BASE | FRONT GAWR | REAR GAWR | TAG GAWR | GVWR | GCWR | APP. UVW | APP. NCC |
| 3005 | 350 | 5.86 | 80 gal. | 200 | 8000 lb. | 15000 lb. | n/a | 22000 lb. | 26000 lb. | 18881 lb. | 3119 lb. |
| 3014 | 350 | 5.86 | 80 gal. | 200 | 8000 lb. | 15000 lb. | n/a | 22000 lb. | 26000 lb. | 18550 lb. | 3450 lb. |
| 3124 | 350 | 5.86 | 80 gal. | 200 | 8000 lb. | 15000 lb. | n/a | 22000 lb. | 26000 lb. | 18805 lb. | 3195 lb. |
| 3226 | 350 | 5.86 | 80 gal. | 208 | 8000 lb. | 15000 lb. | n/a | 22000 lb. | 26000 lb. | 19030 lb. | 2970 lb. |
| 3312 | 350 | 5.86 | 80 gal. | 216 | 8000 lb. | 15000 lb. | n/a | 22000 lb. | 26000 lb. | 19190 lb. | 2810 lb. |
| 3401 | 350 | 6.14 | 80 gal. | 228 | 9000 lb. | 15500 lb. | n/a | 24000 lb. | 30000 lb. | 20275 lb. | 3725 lb. |
| 3408 | 350 | 6.14 | 80 gal. | 234 | 9000 lb. | 15500 lb. | n/a | 24000 lb. | 30000 lb. | 20965 lb. | 3035 lb. |
| 3414 | 350 | 6.14 | 80 gal. | 228 | 9000 lb. | 15500 lb. | n/a | 24000 lb. | 30000 lb. | 20145 lb. | 3855 lb. |
| 3609 | 350 | 6.14 | 80 gal. | 242 | 9000 lb. | 17500 lb. | n/a | 26000 lb. | 30000 lb. | 20525 lb. | 5475 lb. |
| 3616 | 350 | 6.14 | 80 gal. | 242 | 9000 lb. | 17500 lb. | n/a | 26000 lb. | 30000 lb. | 21655 lb. | 4345 lb. |
| 3626 | 350 | 6.14 | 80 gal. | 252 | 9000 lb. | 17500 lb. | n/a | 26000 lb. | 30000 lb. | 21765 lb. | 4235 lb. |
| 3811 | 350 | 6.14 | 80 gal. | 252 | 9000 lb. | 17500 lb. | n/a | 26000 lb. | 30000 lb. | 23002 lb. | 2998 lb. |

The content in our literature depicts and describes products that are subject to change. For the most recent images and information, please visit NewmarCorp.com.

Lengths, heights, widths, and dry weights are approximate. Weight will vary based on optional equipment added to the above base weight.

GAWR: Gross Axle Weight Rating is the maximum permissible weight for an axle.

GVWR: Gross Vehicle Weight Rating is the maximum permissible weight for a fully loaded motor coach.

GCWR: Gross Combination Weight Rating is the value specified by the manufacturer of the vehicle as the maximum allowable loaded weight of this motor coach and any towed trailer or towed vehicle.

UVW: Unloaded Vehicle Weight is the weight of this motor coach as built at the factory with full fuel, engine oil, and coolants. Does not include cargo, fresh water, propane gas, or dealer-installed accessories.

NCC: Net Carrying Capacity is the maximum weight of all occupants, including the driver, personal belongings, food, fresh water, waste water, propane gas, tools, tongue weight of towed vehicle, dealer-installed accessories, etc., that can be carried by the motor coach.

Specifications supplied by the chassis manufacturer.

Bay Star Sport/Bay Star R-Values:

Roof R-Value = 21

Sidewall R-Value = 11

Floor R-Value = 11

Features and Options

EXTERIOR



EXTERIOR FEATURES

Exterior Full-Paint Masterpiece™ Graphics with Clearcoat Finish

Diamond Shield Protection on Front Cap

Lighted Exterior Storage Compartments

Automatic Step for Entrance Door

Convex Exterior Mirrors with Defrost and Remote Control

Rear Hitch for Towing Car

Assist Handle at Entrance Door

Undercoating

Mud Flaps

Smart Level Hydraulic Leveling Jacks with Bluetooth Compatible Touch Pad

OPTIONS

Rear Ladder

Flagpole Bracket

CONSTRUCTION FEATURES

BriteTEK™ Roof with Walkable Deck

Gelcoated Fiberglass Exterior Sidewalls, Front and Rear Caps

Aluminum-Frame Sidewalls and Roof Construction, on 16" Center

5/8" Foam Insulation Laminated in Sidewalls and Ceiling

Polar Pak R19 Batten Insulation in Roof

Automatic Mechanical Lock Arms on Slideout Rooms-Scissor Style

OPTIONS

Exterior Kitchen on Door Side Rear of Unit*

Egress Door with Ladder System*

Power Entrance Step Well Cover on 3811

Power Opening Entrance Door for Wheelchair Lift on 3811



Bay Star Sport Dash



WINDOWS, AWNINGS & VENTS

One-piece Tinted Windshield

Frameless Double Pane Tinted Safety Glass Windows

Fan-Tastic® Vent with Rain Sensor in Kitchen and Bathroom

Skylight Above Shower

Carefree Travelr® Power Side Awning with Alumaguard® and Strip Lighting

Slideout Covers

Rear Window*

OPTIONS

Bunk Windows*

Screen Door Over Wheelchair Lift Area on 3811

CHASSIS FEATURES

Ford® F-53 Chassis with 7.3Ltr V-8 Engine, 22,000 lb. on 30'-33' Floor Plans

Ford® F-53 Chassis with 7.3Ltr V-8 Engine, 24,000 lb. on 34' Floor Plans

Ford® F-53 Chassis with 7.3Ltr V-8 Engine, 26,000 lb. on 36'-38' Floor Plans

Cruise Control

Tilt Steering Wheel

Aluminum Wheels

Anti-lock Braking System

Electronic Stability Control

AIR CONDITIONING & HEATING

Two 13.5 Penguin™ Heat Pump A/C, 5.5 Onan® Generator, 50 Amp Electrical Service with Energy Management System

Dash Heater and Air Conditioner

Defrost Fans Built into Front Overhead

Propane Gas Furnace with Ducted Heat

OPTIONS

Auxiliary Heater in Bedroom

ELECTRICAL FEATURES

5.5 kW Cummins Onan® Generator with Remote Switch and Automatic Changeover

Two 12 Volt House Batteries

Battery Disconnect Switch for House Battery

12 Volt Auxiliary Receptacle on Dashboard

45 Amp Converter

Daytime Running Lights

Emergency Engine Start Switch

LED Ceiling Lights

LED Awning Strip Lighting

Manually Operated Hold-To-Run Slideout Switch

Cable TV Connection

10 Watt Solar Panel to Charge Chassis Battery

Drain Lift Pump with 1200 Inverter*

Lights in Wardrobes

USB Chargers at Driver/Passenger Seat Area

OPTIONS

1200 Watt Inverter Run to TVs*

1200 Watt Pure Sine Inverter for Bedbase, Nightstand and Overhead Cabinet Recepts

Solar Prep with Six Gauge Wire from Roof to First Storage Compartment

Power Rewind Reel with 33' Cord*



PLUMBING & BATH FEATURES

Demand Water System

Sewage Holding Tank Rinse

Water Heater Bypass System

Dometic® 310 China Bowl Stool

ABS Shower Surround with Shower Door

Systems Monitor Panel

Exterior Shower

OPTIONS

Water Filter for Entire Unit

INTERIOR FEATURES

Padded Vinyl Ceiling Panels

Decorative Wall Art

Mini Blinds in Kitchen and Bathroom Windows

Vinyl Floor in Kitchen, Living Area and Bathroom

Carpeting in Bedroom and on Slideout Floors

Interior Assist Handle at Main Entrance Door

Quilted Bedspread and Accent Pillow

Inlaid Six-panel Design Interior Passenger Doors

Auto Motion Manual Double Roller Shades on Windows Behind Driver/Passenger Area

Auto Motion Power Shade at Windshield and Manual Shades at Driver and Passenger Side Windows

Integrated Window Blind System on Entry Door

Dash Panel Color Coordinated ABS

Shoe Storage Located in Entrance Door Step Compartment

OPTIONS

Vinyl Tile Floor in Place of Vinyl Floor



CABINETS & FURNITURE

| |
|--|
| Calypto Glazed Maple Mitered Designer Cabinet Doors-Matte Finish |
| Concealed Hinges on Cabinet Doors |
| Drawers with Full-Extension Ball Bearing Guides |
| Drawers Underneath Booth Dinette |
| Soft-close Cabinet Drawers |
| Polished Solid Surface Countertop in Kitchen with Stainless Steel Sink |
| Solid Surface Countertops in Bathroom and Bedroom |
| Ultralux® Leather Sofa and Front Seats |
| Villa Comfort Fit Convertible Booth Dinette |
| Euro Booth Dinette with One Table Leaf |
| Lifts on Bed Top |
| Plush Pillow Top Mattress* |
| Passenger Seat Work Station |
| Six-way Power for Driver Seat |
| Manual Footrest on Passenger Seat |
| Molded Silverware Divider Tray |
| Pull-Out Pantry Shelves* |
| Mesh Cell Phone Holder at Each Bunk* |
| OPTIONS |
| Harbour Glazed Maple Mitered Designer Cabinets-Matte Finish |
| Arctic Glazed Maple Mitered Designer Cabinets-Matte Finish |
| Combination Desk with Buffet Dinette Table, 2 Fixed and 2 Folding Chairs |
| Combination Desk/Dinette with Freestanding Hidden Leaf Table, 2 Fixed and 2 Folding Chairs |
| Buffet Dinette with Freestanding Table |
| Buffet Dinette |
| Freestanding Hidden Leaf Dinette Table, 2 Fixed and 2 Folding Chairs |
| Drop-Down Bunk Bed Over Driver/Passenger Seats with Electric Release Latches and Bunk Ladder |

| |
|---|
| Drop-Down Bunk Bed Over Driver/Passenger Seats with Electric Release Latches, 32" TV in Front Overhead and Bunk Ladder |
| Folding Cockpit Table |
| Two Recliners Off Door Side, 74" Comfort Lounge |
| Lowered (Fixed) Bed Base with Freestyle Glideaway Adj. Bed Mechanism, Air Mattress and Window, Off Door Side Fold-N-Tumble Sofa |
| Power Adj, Height Bed Base with Freestyle Glideaway Bed Mechanism, Air Mattress and Window on 3811 |

APPLIANCES & ACCESSORIES

| |
|--|
| Recessed Three-Burner Range with Oven and Solid Surface Cover |
| Convection Microwave Below Cooktop on 3811 |
| 30" Over the Range Stainless Steel Microwave |
| Norcold® 10 Cf. Refrigerator |
| Raised Panel Refrigerator Door Insert |
| 6 gal. Gas/Electric Water Heater with Electronic Ignition |
| OPTIONS |
| Norcold® 12 Cf. 4-Door Refrigerator with Icemaker |
| Whirlpool® 11 Cf. Refrigerator with Dedicated 1200W Pure Sine Inverter, 2 Extra Batteries and Icemaker |
| Whirlpool® 11 Cf. Refrigerator with Dedicated 1200W Pure Sine Inverter and 2 Extra Batteries |
| Icemaker Added to Standard Norcold® Refrigerator |
| Icemaker Added to Standard Norcold® Refrigerator with Heated Water Line |
| 30" Convection Stainless Steel Microwave with Recessed 3 Burner Cooktop |
| Fireplace in Living Area |
| 110 Volt Heat Pads for Holding Tanks |
| Prep For Two-Piece Stacked Washer/Dryer |
| Splendide® Two-Piece Stacked Washer/Dryer |
| Truma Comfort Plus Continuous Hot Water Heater |
| 30" Convection Stainless Steel Microwave in Kitchen Overhead, Drawer Below Cooktop on 3811 |



AUDIO, VIDEO & ACCESSORIES

| |
|---|
| Samsung® LED TV in Living and Bedroom Areas (TV Sizes Vary Per Floor Plan) |
| Dash Radio/CD Player with Harman/JBL 180 Watt Sound System |
| Two Sony® Blu-ray Disc Players |
| Rearview Color Monitor System with Audio |
| Winegard Digital Crank-Up TV Antenna |
| Satellite Dish Prep on Roof |
| High Definition Component Wiring |
| TV Jack and 110 Volt Recept in Door Side Exterior Storage Compartment |
| Bluetooth Microphone for Sony® Dash Radio |
| 10 Bc Fire Extinguisher, Smoke Detector, Propane and Carbon Monoxide Detector |
| Side-View Cameras Displayed onto Rearview Monitor Screen |
| OPTIONS |
| Samsung® 32" LED TV in Front Overhead* |
| Exterior Entertainment Center in Sidewall Samsung® 32" LED TV |
| Exterior Entertainment Center in Storage Compartment with Samsung® 32" LED TV and AM/FM Radio |
| Sirius Radio Capability with Antenna (Does Not Include Monthly Subscription) |
| Bose® Solo 5 Soundbar Sound System |
| WiFiRanger Sky4 Pack Router |
| WiFiRanger SkyPro LTE Cellular Router |
| Xite Dash Radio, 6" Monitor with Rand McNally Navigation |
| Winegard Automatic Open Face Satellite Dish |
| Winegard Automatic Dome Satellite Dish |
| Winegard in Motion Dome Satellite Dish |
| Winegard Automatic Open Face SWM Satellite |
| Winegard Cellular In Motion WiFi |
| Samsung® 43" TV on Televator with Fireplace in Place of Front Overhead TV on 3811 |

*Check with dealership on floor plan availability.

The content in our literature depicts and describes products that are subject to change. For the most recent images and information, please visit NewmarCorp.com.

The Newmar Customer Experience

The Newmar difference goes beyond our industry-leading motor coaches to provide you with an unrivaled ownership experience.



QUALITY FROM THE START

Every Newmar is crafted one at a time by folks who have spent an average of eight years building them. And each coach we assemble must undergo more than 1,000 tests and checks before ever leaving our factory.



CAREFULLY SELECTED DEALERS

We view our dealership network in terms of quality, not quantity. Each of our dealers acts as a partner in our shared mission to exceed your highest of expectations, for an ownership experience that's second to none from day one.



EVERYTHING IN ONE PLACE

As a Newmar owner, you'll find resources specific to your coach through Newgle, an easy-to-use knowledge base that houses everything from user guides to technical support documents.



FRIENDS FOR LIFE

Meet fellow owners through the Newmar Kountry Klub, a top social club for RV travelers that hosts rallies and other special events throughout the U.S. and Canada.



SEAMLESS SERVICE

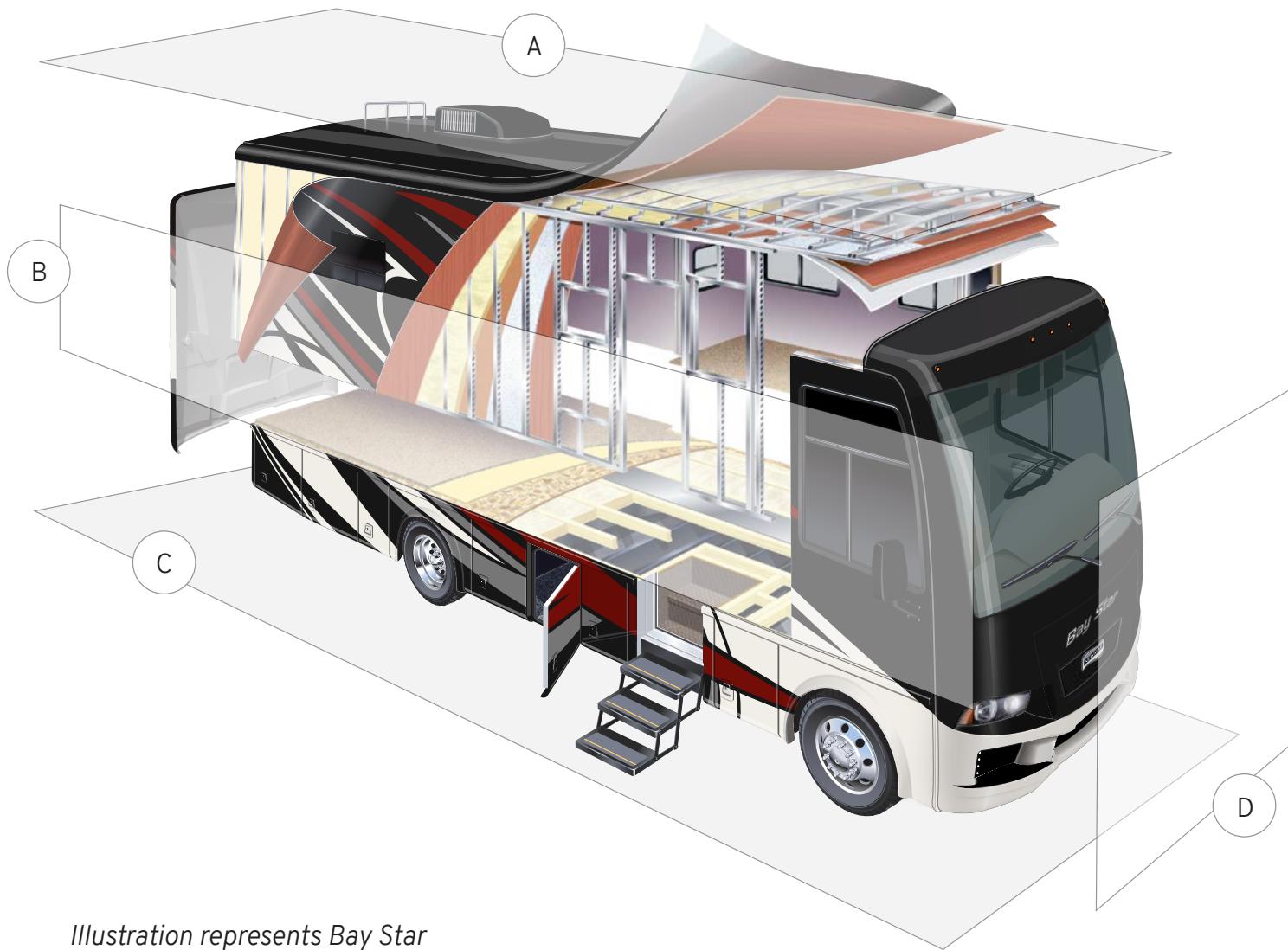
When you join the Newmar family, we pair you with a dedicated service specialist with expert knowledge of your exact coach. Available 24/7, our service specialists guarantee dealer warranty authorizations within four business hours and ship all in-stock parts the same day, free of charge.



ROCK-SOLID PROTECTION

All models include a one-year/unlimited mileage limited warranty and a five-year, non-transferable structural warranty that covers your coach's superstructure in the event it fails to perform.

Ask your Newmar dealer for more details.



A. ROOF

Fiberglass Roof
 Batten Insulation
 A/C Ducting
 16" on Center Aluminum Rafter Framing
 Kraft Paper Vapor Barrier
 5/8" Bead Foam
 3/16" Panel
 Padded Vinyl Overlay

B. SIDEWALL

Interior Wall Panel
 5/8" Bead Foam
 Kraft Paper Vapor Barrier
 Batten Insulation
 Composite One-Piece
 Gelcoat Exterior Wall
 Aluminum Framing

Illustration represents Bay Star

C. FLOOR

| | |
|--------------------|-------------------------------|
| Carpet/Tile | Batten Insulation |
| Carpet Padding | 16" on Center Wood Framing |
| 5/8" Floor Decking | Polyethylene Moisture Barrier |

D. EXTERIOR

| | |
|--|---|
| (2) 15M Penguin™ Central Air Conditioners with Heat Pump | Frameless, Double-Pane, Tinted Safety Glass Windows |
| One-Piece Bonded Windshield | Side-Hinged Baggage Doors |

Our Partners

Newmar Quality Begins with the Company We Keep

You deserve class-leading performance from names you can trust. That's why we only work with suppliers dedicated to providing our customers with unrivaled quality, comfort, and support.



Driven By You

FREIGHTLINER CUSTOM CHASSIS

Freightliner Custom Chassis Corp. (FCCC) is renowned for delivering the industry's best ownership experience through exceptional 24/7 factory-direct support, exceptional ride and handling, and developing high-performance innovations such as DRIVETECH. It's the only RV driving system that prioritizes safety and automotive luxury by putting every command at your fingertips.



SPARTAN RV CHASSIS

Designs, engineers, and assembles by hand each Spartan chassis for the best ride and handling in the industry. Spartan's leading safety ratings and ongoing investment in R&D give Spartan chassis owners superior performance and higher coach resale values. Spartan is American owned and has earned the trust of discerning RV owners based on its premium products and award-winning customer service.



We create chemistry

BASF

A world full of colors! The Coatings Division of BASF develops, produces and markets a high-quality range of innovative and sustainable automotive OEM coatings and automotive refinishes.



INDUSTRIAL FINISHES

Industrial Finishes has supported RV manufacturers for over four decades. The Industrial Finishes paint process delivers uncompromising quality, providing your coach with a true "Masterpiece" finish.



RIVERPARK

RiverPark proudly represents the leading brands in consumer electronics—brands you know and trust to provide exceptional quality and innovative technology. Newmar features Samsung's incredible 4K TVs with Bose soundbars, Xite Infotainment systems featuring Rand McNally Navigation and JBL and Infinity premium audio. Step into a 2021 Newmar and experience dazzling audio and video performance throughout!



Our People Take It Personally

Since Newmar was founded in 1968, our goal has been to build a better RV.

We have always believed that traveling shouldn't mean leaving behind the comforts you enjoy, so our coaches are crafted to be residential-quality homes—complete with handmade cabinetry and designer décors.

Every Newmar is built by hand, one at a time, by men and women who have dedicated years to creating superior-quality coaches that surpass their mass-produced competition.

We don't want to simply ask you to trust us when we talk about the Newmar difference. We want to prove it, every single time you hit the road. Because we take pride in the responsibility of designing, engineering, and constructing your motorhome.

And we know you'll be proud driving one on the way to your next destination.

When You Know the Difference.



Newmar Corporation | 355 N Delaware St | PO Box 30 | Nappanee, IN 46550-0030 | 574-773-7791 | Fax 574-773-2895
NewmarCorp.com