

APEX





MORE THAN 60 YEARS OF PROUD HISTORY...

Providing adventure, freedom, flexibility, reliability, safety & security. Coachmen... It's a brand you can trust. Coachmen RV, a division of Forest River, Inc., is headquartered in Middlebury, Indiana, with our primary manufacturing facilities on nearly 220 acres with over 23 acres under roof. Compare the Coachmen advantages and you will see why Coachmen is the Leader to the Great Outdoors.

LEADER TO THE GREAT OUTDOORS

COACHMENRV.COM

APEX



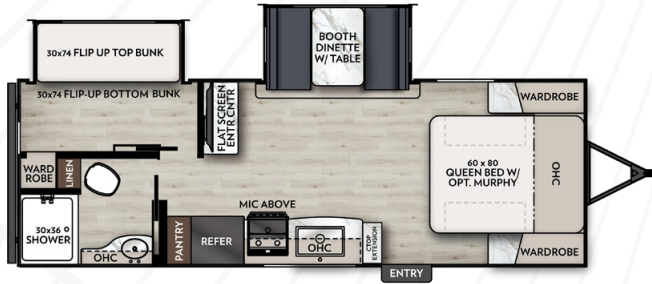
Apex Travel Trailers redefine what it means to travel light without compromising on quality, comfort, or innovation. Unlike standard lightweight RVs, every Apex Travel Trailer starts with a clear purpose, not just a frame, walls, and roof, but a commitment to smarter design and superior craftsmanship. Built by Coachmen RV, Apex sets a higher standard by focusing on the details that matter most to today's RVers.

What sets Apex apart? A unique blend of quality construction, eco-friendly materials, and ultra-lightweight engineering. Each model undergoes rigorous evaluation based on five key pillars: Quality, Lightweight, Innovation, Eco-Friendly, and Design. Only trailers that excel in every category earn the Apex seal of approval. Driven by real customer feedback, Apex Travel Trailers are built to meet the demands of modern adventurers, whether you are towing with a mid-size SUV or a half-ton truck. From smart storage solutions to energy-efficient systems and durable construction, Apex is the intelligent choice for those who expect more from a lightweight travel trailer.



APEX ULTRA-LITE — 8 FT. WIDE

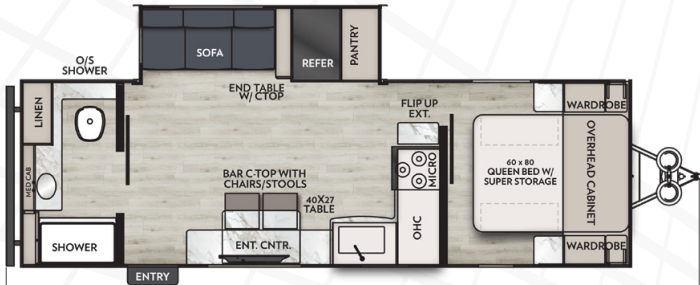
241 BHS



242 BARV



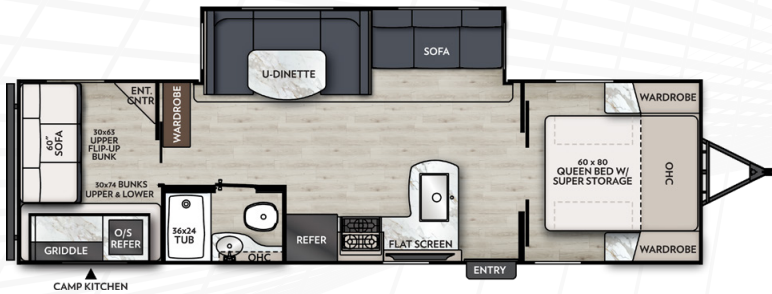
244 RBS



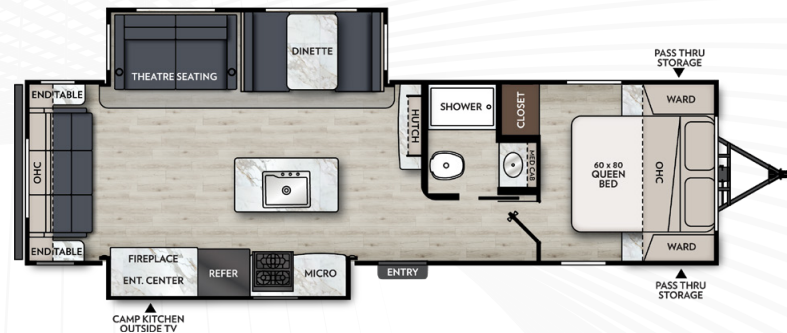
246 BARV



291 TBSS



293 RLDS



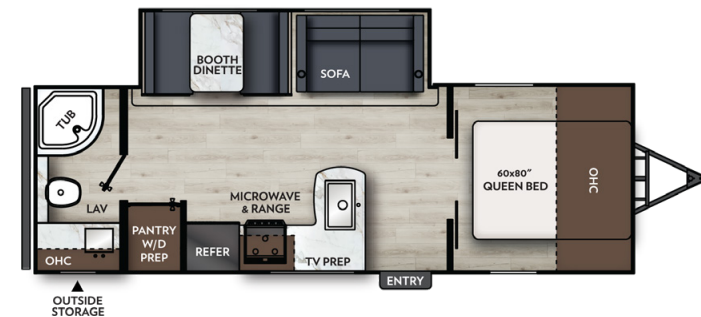
APEX ULTRA-LITE: X-SERIES – 8 FT. WIDE

APEX ULTRA-LITE	241BHS	242BARV	244RBS	246BARV	291TBSS	293RLDS
HITCH WEIGHT (LB.)	752	740	654	832	980	818
CARRYING CAPACITY (LB.)	1,878	1,828	1,430	1,154	1,084	2,314
UVW (LB.)	5,874	5,772	6,224	6,678	6,896	7,304
GVWR (LB.)	7,752	7,600	7,654	7,832	7,980	9,618
EXT. LENGTH (BUMPER TO HITCH)	28' 0"	28' 10"	29' 8"	32' 3"	33' 6"	34' 0"
EXT. HEIGHT (INCL. A/C)	10' 11"	10' 11"	10' 11"	10' 11"	10' 11"	10' 11"
INT. HEIGHT (COACH)	6' 9"	6' 9"	6' 9"	6' 9"	6' 9"	6' 9"
AWNING LENGTH	20'	16'	20'	18'	18'	20'
FRESH WATER CAPACITY (GAL.)	50	50	50	50	50	50
GREY WATER CAPACITY (GAL.)	35	35	70	70	35	70
WASTE WATER CAPACITY (GAL.)	35	35	35	35	35	35

APEX ULTRA-LITE: X-SERIES	24 RBX	26 BHX	29 BHX
HITCH WEIGHT (LB.)	614	730	884
CARRYING CAPACITY (LB.)	1,493	1,577	1,761
UVW (LB.)	5,507	5,773	6,123
GVWR (LB.)	7,000	7,350	7,884
EXT. LENGTH (BUMPER TO HITCH)	29' 1"	30' 11"	33' 7"
EXT. HEIGHT (INCL. A/C)	10' 10"	10' 10"	10' 10"
INT. HEIGHT (COACH)	6' 9"	6' 9"	6' 9"
AWNING LENGTH	14'	14'	14'
FRESH WATER CAPACITY (GAL.)	50	50	50
GREY WATER CAPACITY (GAL.)	35	35	35
WASTE WATER CAPACITY (GAL.)	35	35	35

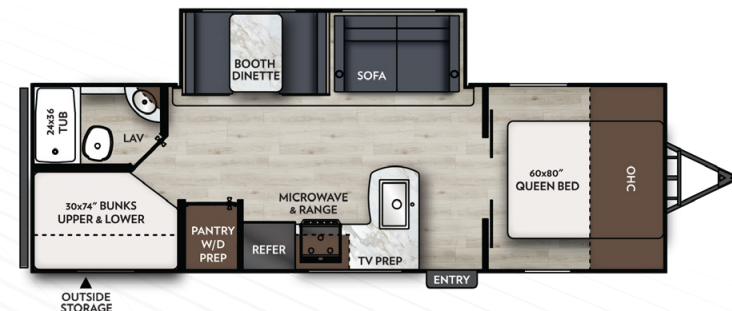
X-SERIES

24 RBX



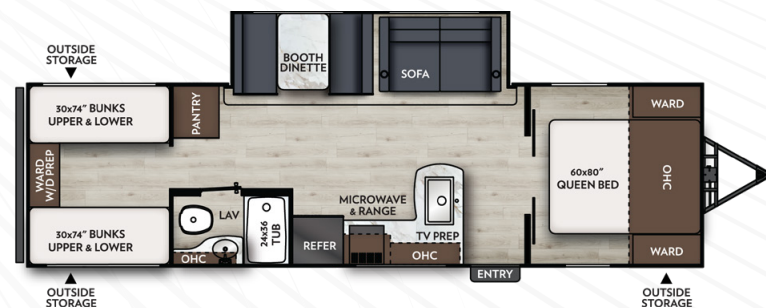
X-SERIES

26 BHX



X-SERIES

29 BHX



APEX ULTRA-LITE — STANDARDS & OPTIONS

INTERIOR & DÉCOR

- Sorrento Cabinetry
- Super Bed Storage (Select Models)
- Shaker Cabinet Door Frames With Magnetic Catch
- One-Piece Seamless Edge Countertops
- Congoleum Residential Flooring
- Overhead Bedroom Cabinets With Side Wardrobes
- Hard Valances With Roller Shades
- Interior Control Center
- LED Interior Lights
- Pedestal Dinette Table
- Large Oversized Booth or U-Shaped Dinette With Sliding Door Storage Access (Select Models Only)
- Hide-A-Bed Sofa (Deep Slides Only)
- Smart LED TV
- LP Leak Alarm
- Fire Extinguisher
- Smoke Alarm
- Carbon Monoxide Detector
- Access Doors Under Dinette
- Mattress With Cover

ELECTRICAL / HEATING / AIR CONDITIONING

- Furnace - Forced Air/Ducts
- 15,000 BTU Air Conditioning (Ducted On 8' Wide)
- 55 Amp Power Center
- 50 Amp Service Standard
- Outside Receptacle GFI
- 400-Watt Solar System With 30 Amp Control Charger
- Detachable Marine Style Power Cord
- USB/USB-C Chargers
- Wireless Premium Alpine Bluetooth Speaker
- Inverter Prep

GALLEY

- 10 Cu. Ft. 12V Refrigerator
- Flush-Mount, 3-Burner Stovetop With Air Fryer Oven
- Power LED Lighted Range Hood
- Microwave
- Stainless Steel Single Bowl Sink With Flush-Mount Cover
- One-Piece Seamless Edge Countertops
- Matte Black Hardware

BATH AND WATER

- On Demand Tankless Water Heater (48,000 BTU)
- Power Bath Vent
- Water Heater Bypass Valve
- On-Demand Water Pump
- Below Floor Low Point Drains
- Foot Flush Toilet
- Shower/Tub Surround
- Glass Shower Door (Select Models)
- Skylight In Bath
- Nautilus Board

EXTERIOR CONSTRUCTION

- Aluma-Cage Construction
- Vacuum-Bonded Laminated Aluminum Trussed Roof With Dicor Crossflex Roof Membrane
- Vacuum-Bonded Laminated Dual Azdel Fiberglass Sidewalls and Rear Wall
- Laminated Aluminum Framed Floor
- Fiberglass Front Cap With LED Lighting And Window
- Front Stone Guard
- Corrosion Resistant Powder Coated Frame
- I-Beam Chassis Construction
- Heated And Enclosed Underbelly With Forced Air
- Gutter Rail
- Dual 20 Lb. LP Tanks With Cover
- Dual Battery Tray
- Solid Step
- Tinted Safety Glass Radius Windows
- Radius Glass Friction Hinge Entry Door
- Dead Bolt Lock
- Swing Away Assist Handle
- Radius Slam Latch Baggage Doors
- Break Away Switch
- Schwintek/Rack And Pinon Slide Room System (Per Floor Plan)
- Frame Receiver Prep
- Battery Disconnect
- Cast Iron Griddles (Select Models)
- LP Port
- Ladder Prep
- Aluminum Rims
- Stabilizer Jacks
- Hot/Cold Outside Shower
- Black Tank Flush
- Power Awning With LED Light
- Slide Top Prep
- Backup Camera Mount
- Power Tongue Jack
- Starlink Prep
- Drop Frame

OPTIONS

- **Frameless Dark Tint Windows**
- **50 Amp Service With Second 13.5K Air Conditioning**
- **Theater Seating** (Select Models)
- **Murphy Bed** (241BHS Only)



APEX X-SERIES – STANDARDS & OPTIONS

INTERIOR & DÉCOR

- Sorrento Cabinetry
- Shaker Cabinet Door Frames With Magnetic Catch
- One-Piece Seamless Edge Countertops
- Congoleum Residential Flooring
- Overhead Bedroom Cabinets With Side Wardrobes
- Hard Valances With Night Shades
- Interior Control Center
- LED Interior Lights
- Pedestal Dinette Table
- Hide-A-Bed Sofa (Deep Slides Only)
- Smart LED TV
- LP Leak Alarm
- Fire Extinguisher
- Smoke Alarm
- Carbon Monoxide Detector
- Access Doors Under Dinette
- Mattress

ELECTRICAL / HEATING / AIR CONDITIONING

- Furnace - Forced Air/Ducts
- 15,000 BTU Air Conditioning (Ducted On 8' Wide)
- 55 Amp Power Center
- 50 Amp Service Standard
- Outside Receptacle GFI
- Solar Prep With 30 Amp Control Charger
- Detachable Marine Style Power Cord
- Wireless Bluetooth Speaker
- Inverter Prep

GALLEY

- 10 Cu. Ft. 12V Refrigerator
- Flush-Mount, 2-Burner Cooktop
- Power LED Lighted Range Hood
- Microwave Airfryer
- Stainless Steel Single Bowl Sink
- One-Piece Seamless Edge Countertops

BATH AND WATER

- On Demand Tankless Water Heater (48,000 BTU)
- Power Bath Vent
- Water Heater Bypass Valve
- On-Demand Water Pump
- Below Floor Low Point Drains
- Foot Flush Toilet
- Shower/Tub Surround
- Skylight In Bath
- Washer/Dryer Prep (Select Models)

EXTERIOR CONSTRUCTION

- Alumina-Cage Construction
- Wood Truss Roof With Tufflex Roof Membrane
- Vacuum-Bonded Laminated Dual Azdel Fiberglass Sidewalls And Rear Wall
- Laminated Aluminum Framed Floor
- Front Stone Guard
- Corrosion Resistant Powder Coated Frame
- I-Beam Chassis Construction
- Heated And Enclosed Underbelly With Forced Air
- Gutter Rail
- Dual 20 Lb. LP Tanks With Cover
- Dual Battery Tray
- Solid Step
- Tinted Safety Glass Radius Windows
- Radius Friction Hinge Entry Door
- Dead Bolt Lock
- Swing Away Assist Handle
- Break Away Switch
- Rack And Pinon Slide Room System
- LP Port
- Ladder Prep
- Steel Rims
- Stabilizer Jacks
- Outside Sprayer Port
- Black Tank Flush
- Power Awning With LED Light
- Slide Top Prep
- Power Tongue Jack
- Starlink Prep
- LED Motion Sensor Light In Exterior Storage



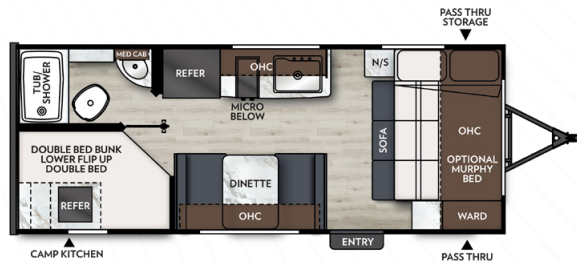
OPTIONS

- 50 Amp Service With Second 13.5K Air Conditioning
- Theater Seating

APEX NANO – 7.5 FT. WIDE

	181 RB	183 BH	185 BH	186 BH	187 RB	190 RBS	194 BHS	203 RBK	208 BHS	213 RDS	216 RKS	224 RBS	228 BHS
HITCH WEIGHT (LB.)	436	497	423	497	436	554	554	530	586	590	570	546	536
CARRYING CAPACITY (LB.)	1,280	930	1,274	930	1,280	764	762	1,842	1,566	1,790	1,438	1,548	1,368
UVW (LB.)	3,420	3,770	3,426	3,770	3,420	3,936	3,938	4,158	4,434	4,210	4,562	4,452	4,632
GVWR (LB.)	4,700	4,700	4,700	4,700	4,700	4,700	4,700	6,000	6,000	6,000	6,000	6,000	6,000
EXT. LENGTH (BUMPER TO HITCH)	21' 5"	22' 11"	20' 7"	22' 11"	21' 5"	22' 7"	22' 8"	23' 5"	24' 11"	25' 2"	26' 0"	25' 6"	27' 8"
EXT. HEIGHT (INCL. A/C)	10' 2"	10' 2"	10' 2"	10' 2"	10' 2"	10' 2"	10' 2"	10' 2"	10' 2"	10' 2"	10' 2"	10' 2"	10' 2"
INT. HEIGHT (COACH)	6' 5"	6' 5"	6' 5"	6' 5"	6' 5"	6' 5"	6' 5"	6' 5"	6' 5"	6' 5"	6' 5"	6' 5"	6' 5"
AWNING LENGTH	12'	15'	12'	15'	12'	15'	14'	15'	14'	17' 6"	17' 6"	16'	14'
FRESH WATER CAPACITY (GAL.)	52	52	52	52	52	52	52	52	52	52	52	52	52
GREY WATER CAPACITY (GAL.)	27	27	27	27	27	35	27	35	35	35	70	70	35
WASTE WATER CAPACITY (GAL.)	27	27	27	27	27	35	27	35	35	35	35	35	35

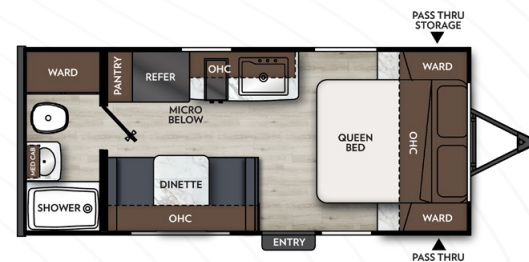
186 BH



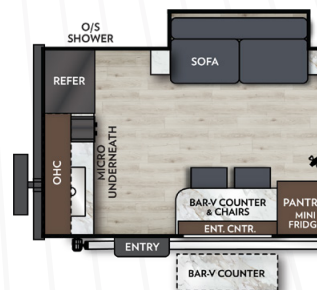
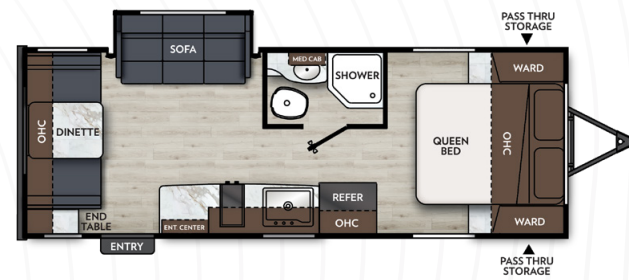
208 BHS



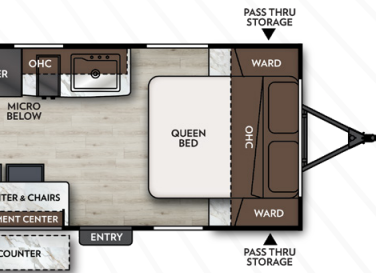
187 RB



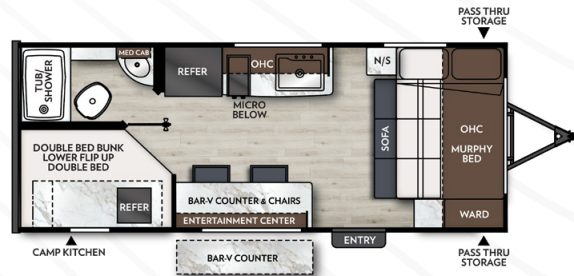
213 RDS



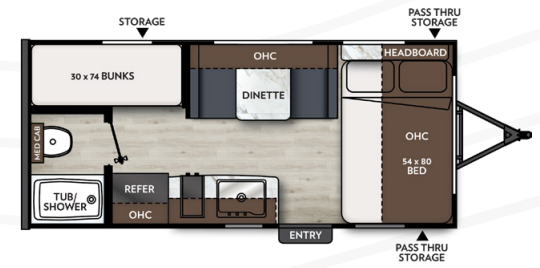
181 RB



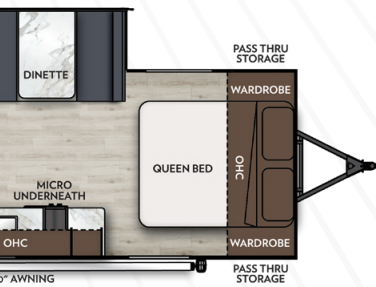
183 BH



185 BH



190 RBS



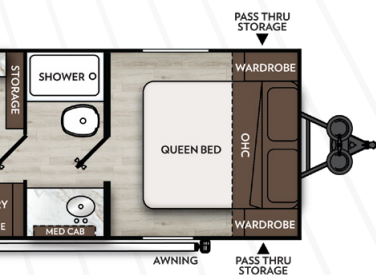
194 BHS



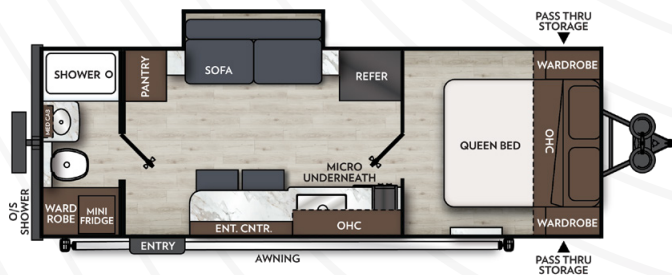
203 RBK



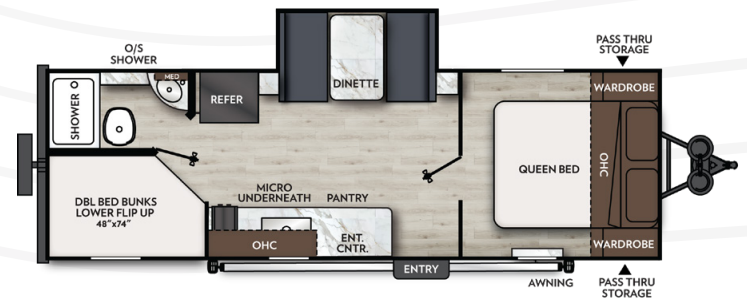
216 RKS



224 RBS



228 BHS



APEX NANO – STANDARDS & OPTIONS

INTERIOR & DÉCOR

- Sorrento Cabinetry
- Shaker Cabinet Door Frames With Magnetic Catches
- One-Piece Seamless Edge Countertops
- Congoleum Residential Flooring
- Overhead Bedroom Cabinets With Side Wardrobes And Removable Shelf
- Hard Valances With Roller Shades
- Pedestal Dinette Table
- Booth Dinette
- LP Leak Alarm
- Fire Extinguisher
- Smoke Alarm
- Carbon Monoxide Detector
- LED Interior Lighting
- High Velocity 10" Power Roof Vent
- Mounted Premium Alpine Bluetooth Wireless Speaker
- Mattress With Cover
- Magnetic Cabinet Door Catches
- Access Doors Under Dinette
- Apex Throw Blanket

ELECTRICAL / HEATING / AIR CONDITIONING

- Direct Vent Furnace
- 15,000 BTU Air Conditioning
- Dual 8,000 BTU Air Conditioning (213RDS, 216RKS, 224RBS, 228BHS)
- 55 Amp Power Center
- 400-Watt Solar System With 30 Amp Control Charger
- Outside Receptacle GFI
- Detachable Marine Style Power Cord
- USB/USB-C Chargers
- Inverter Prep

GALLEY

- 10 Cu. Ft. 12V Refrigerator
- Narrow Flush-Mount 2-Burner Cooktop
- Airfryer Microwave
- Stainless Steel Single Bowl Sink With Flush-Mount Cover
- One-Piece Seamless Edge Countertops
- Matte Black Hardware

BATH AND WATER

- On-Demand Tankless Water Heater (48,000 BTU)
- Power Bath Vent
- Water Heater Bypass Valve
- On-Demand Water Pump
- Below Floor Low Point Drains
- Foot Flush Toilet
- Shower/Tub Surround
- Skylight In Bath
- Hot/Cold Outside Shower
- Black Tank Flush
- 52-Gallon Fresh Water Tank

EXTERIOR CONSTRUCTION

- Aluma-Cage Construction
- Vacuum-Bonded Laminated Aluminum Trussed Roof With Dicor Crossflex Roof Membrane
- Vacuum-Bonded Laminated Dual Azdel Fiberglass Sidewalls and Rear Wall
- Laminated Aluminum Framed Floor
- Corrosion Resistant Powder Coated Frame
- I-Beam Chassis Construction
- Fiberglass Front Cap With Windshield
- Heated And Enclosed Underbelly With Forced Air (Dual-Axle Only)
- Gutter Rail
- Power Awning With LED Lighting
- (2) 20 Lb. LP Tanks With Cover
- Dual Battery Tray
- Solid Step
- Tinted Safety Glass Radius Windows
- Radius Glass Friction Hinge Entrance Door
- Deadbolt Lock
- Swing Away Assist Handle
- Radius Thumb Latch Baggage Doors
- Break Away Switch
- Back-Up Camera Prep
- Battery Disconnect
- Frame Receiver Prep (Dual Axles Only)
- Cast Iron Griddles (Select Models)
- Regulated LP Port
- Schwintek Slide System (N/A 181RB, 183BH, 185BH, 186BH, 187RB)
- Ladder Prep
- Spare Tire And Carrier
- Stabilizer Jacks (4)
- Starlink Prep

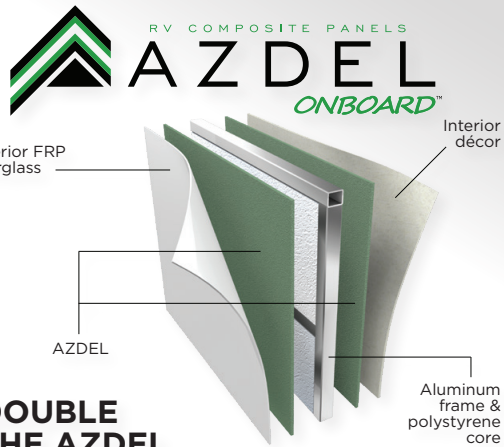


OPTIONS

- **Murphy Bed** (183BH, 186BH, 203RBK, 208BHS Only)
- **12V Tank Heater Pads**
- **Stargazer With Blind And Shade System**
- **All-Terrain Tires With Aluminum Rims**

APEX – CONSTRUCTION

- 1 3M Breathable graphics
- 2 Tinted, safety glass windows
- 3 Welded aluminum structure, vacuum-bonded sidewalls and rear wall, laminated floor
- 4 Aluminum reinforced vacuum-bonded roof
- 5 Dicolor Crossflex roofing membrane
- 6 Azdel composite exterior/interior sidewall and rear wall panels
- 7 Aerodynamic front profile with fiberglass front cap and integrated window
- 8 (2) 20 lb. LP tanks
- 9 Insulated slam latch doors with magnetic hold-ups (N/A Nanos)
- 10 Smooth exterior fiberglass kiln
- 11 Aluminum framed openings
- 12 Fully enclosed, heated underbelly (Double axle models)
- 13 Fully welded tubular aluminum floor structure
- 14 Slide system
- 15 Congoleum® DiamondFlor flooring
- 16 Powder E-coated I-beam frame with full-depth cross members
- 17 Dexter® E-Z Lube® axle hubs (Nano) SuperLube axles by Lippert (Ultra-Lite)
- 18 Radial tires



DOUBLE THE AZDEL, DOUBLE THE BENEFITS.

By using AZDEL for both the exterior and interior panels, we have doubled our benefits for overall weight reduction, temperature control, sound absorption, longevity, and low VOCs. Azdel composite panels are produced using a patented blend of polypropylene and fiberglass to create a durable, lightweight, water and temperature resistant, odorless and ecofriendly wall that will increase the life of your RV.

- 2 Weight matters 50% lighter than wood
- Longer RV life
- Let it rain - no mold, rot, mildew, warping or delamination
- Unaffected by changes in temperature & humidity
- Quieter RVs
- Free of formaldehyde and toxic odors
- Twice the thermal insulation of plywood
- No deforestation

DICOR CROSSFLEX SYNTHETIC THERMOPLASTIC ROOFING SYSTEM

- Extreme tear and puncture resistance
- High solar reflectance
- High thermal emissivity
- Lightweight
- Flexible



Designed for towing by today's half-ton trucks, minivans and SUVs.

ALUMICAGE™ CONSTRUCTION

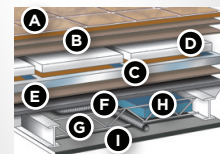
ALUMINUM REINFORCED VACUUM-BONDED ROOF



WELDED ALUMINUM FRAMING



SIX LAYER LAMINATED FLOOR



- Residential durable insulated floor covering **A**
- Double layer Luan plywood top decking **B**
- Welded aluminum frame **C**
- Block foam structural insulation **D**
- Luan plywood bottom decking **E**
- Darco waterproof floor wrap **F**
- Cross member support **G**
- Holding tanks **H**
- Heated and enclosed underbelly (Double axle models) **I**

STANDARD OFF-THE-GRID ESSENTIALS

400-WATT SOLAR SYSTEM WITH 30 AMP CONTROL CHARGER TO BATTERY

(Std. with Mandatory Off-Grid Package on Nano, Std. Ultra-Lite)



DUAL LP TANKS WITH COVER

(2) 20 lb. Tanks with Cover for Longer Camping Time (Std. with Mandatory Off-Grid Package on Nano, Std. Ultra-Lite)



OPTIONAL 12V TANK HEATER PADS

(Nano models)



FRAME RECEIVER PREP

(Dual Axle only)



HIGH VOLUME POWER ROOF VENT

3-Speeds, Quiet Operation, 9.3 CFM Air Circulation (Std. with Mandatory Off-Grid Package on Nano, N/A Ultra-Lite)

APEX STAR-GAZER

The all new Star-Gazer allows you to bring in more natural light and greater air flow. For those wanting to keep out insects or sleep in on the weekends, the Star-Gazer will also feature a screen and blackout shade that are very user friendly. (Optional on Nano floorplans. N/A 185 BH, 224 RBS, 228 BHS)



BRAND NEW FEATURES FOR THE 2026 MODEL YEAR

All 2026 Apex travel trailers now come standard with the larger 10 Cubic Foot refrigerator. The 8' Ultra-Lite segment now also include taller sidewalls and new drop frame. This drop frame allows for more storage in your pass through along with the new Nautilus Board Control Center. This new Apex feature makes winterizing and managing campsite connections easier than ever before.

10 CU. FT. REFRIGERATORS



NAUTILUS BOARD



EASY TO TOW

LOWER CENTER OF GRAVITY FOR BETTER TOWABILITY

EXTENDED CAMPING HEATED & ENCLOSED UNDERBELLY

Apex is proud to be one of three products to receive the Emerald Level Certification, the highest rated level possible.



As a Certified Green RV, APEX utilizes effective production techniques in combination with healthy materials, plus efficient usage of energy and water to produce a high quality RV with less environmental impact.

ALL UNITS ARE AVAILABLE UNDER 7,500 LBS. IN 18' - 34' LENGTHS.

THE APEX ADVANTAGE

WHAT IS THE APEX ADVANTAGE?

It's the collection of unique features offered in an Apex RV to ensure a smoother ride, a better camping experience, and a trailer that will last for years.

REINFORCED LAMINATION

We vacuum bond and pinch roll every sidewall, then perform a pull-adhesion test.

Most manufacturers just do one process or the other, but by doing both we improve the strength and longevity of the sidewalls.

AZDEL™ COMPOSITE

Most manufacturers use wood sidewalls that can expand, swell, and eventually mold.

We use Azdel. It's impervious to water, won't rot or mold, and with less than a 1% chance of delaminating, it ensures the long-term integrity of the sidewalls.

DIGITAL OWNER'S MANUAL

Our owner's manuals are easy to access through the Coachmen website or our free app.

Supplemented with videos, PowerPoints, and more, it's got all you need to know about your coach.

EACH NEW COACHMEN PURCHASE PROVIDES:

- ✔ Pre-delivery Inspection.
- ✔ Digital Owner's Manual.
- ✔ Free Membership to Coachmen Owners Association (COA).
Learn more at www.coachmenowners.com.
- ✔ A Contribution to Care Camps Foundation www.carecamps.org.
- ✔ 1 Year Free Roadside Assistance from Date of Purchase.



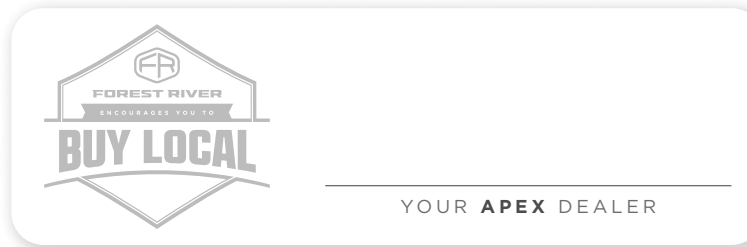
LEARN MORE:

Scan this QR code with your mobile device to learn more about Coachmen.



SPECIFICATION DEFINITIONS:

Scan this barcode using a QR reader on your smartphone to learn RV terminology and more!



All information contained in this brochure is believed to be accurate at the time of publication. However, during any model year, it may be necessary to make changes to the manufacturing process of the units and information in this brochure. Your unit may differ from the information in this brochure due to any changes in the manufacturing process and equipment. Forest River, Inc., reserves the right to make all such changes without notice, including prices, colors, combinations, materials, equipment and specifications of any model as well as the addition of new models and the discontinuance of models shown in this brochure. Therefore, please consult with your Forest River dealer and confirm the availability of any materials, combinations, designs, or specifications that are meaningful to your purchase decision. © 2026 Coachmen, a Division of Forest River, Inc., a Berkshire Hathaway Company. All Rights Reserved. Forest River, Inc. 01/26

COACHMEN



Coachmen RV, a Division of Forest River, Inc.,
A Berkshire Hathaway Company
423 N. Main St., P.O. Box 30, Middlebury, IN 46540