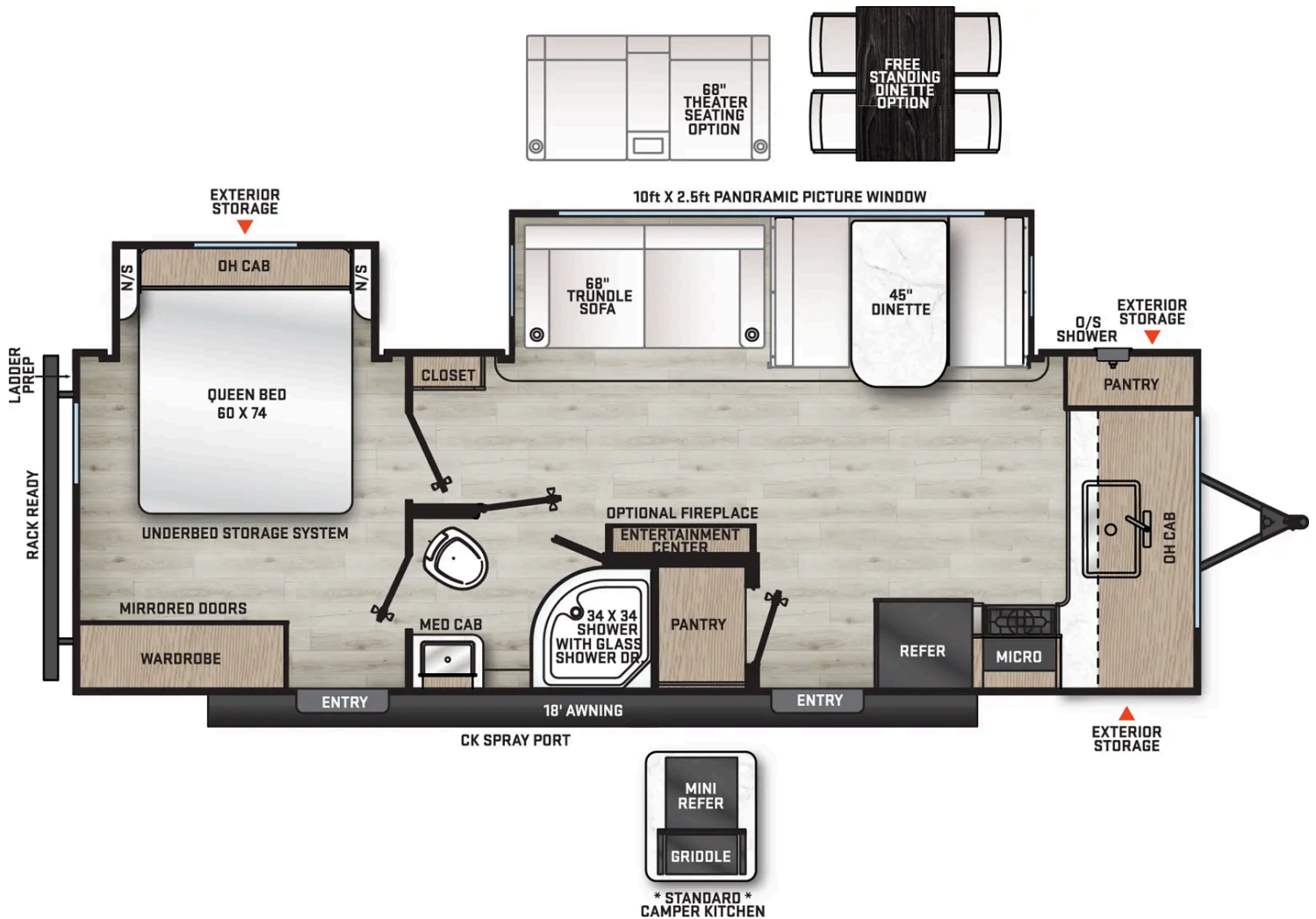




CATALINA 263FKDS FLOORPLAN



Hitch Weight	918 lb.	GVWR	8,600 lb.
UVW	6,869 lb.	CCC	1,731 lb.
Exterior Length	30' 0"	Exterior Height	11' 1"
Exterior Width	96"	Fresh Water	44 gal.
Gray Water	60 gal.	Black Water	30 gal.
Awning Size	18'		

SPECIFICATIONS DEFINITIONS

GVWR (Gross Vehicle Weight Rating) – is the maximum permissible weight of the unit when fully loaded. It includes all weights, inclusive of all fluids, cargo, optional equipment and accessories. For safety and product performance do NOT exceed the GVWR.

GCWR (Gross Combined Weight Rating) – is the maximum permissible loaded weight of your motor home and any towed trailer or towed vehicle. Actual GCWR of this vehicle may be limited by the sum of the GVWR and the installed hitch receiver maximum capacity rating; see hitch rating label for detail.

GAWR (Gross Axle Weight Rating) – is the maximum permissible weight, including cargo, fluids, optional equipment and accessories that can be safely supported by a combination of all axles.

UVW (Unloaded Vehicle Weight)* – is the typical weight of the unit as manufactured at the factory. It includes all weight at the unit's axle(s) and tongue or pin and LP Gas. The UVW does not include cargo, fresh potable water, additional optional equipment or dealer installed accessories.

*Estimated Average based on standard build optional equipment.

CCC (Cargo Carrying Capacity) ** – is the amount of weight available for fresh potable water, cargo, additional optional equipment and accessories. CCC is equal to GVWR minus UVW. Available CCC should accommodate fresh potable water (8.3 lbs per gallon). Before filling the fresh water tank, empty the black and gray tanks to provide for more cargo capacity.

**Estimated Average based on standard build optional equipment.

Each Forest River RV is weighed at the manufacturing facility prior to shipping. A label identifying the unloaded vehicle weight of the actual unit and the cargo carrying capacity is applied to every Forest River RV prior to leaving our facilities.

The load capacity of your unit is designated by weight, not by volume, so you cannot necessarily use all available space when loading your unit.

Actual towing capacity is dependent upon your particular loading and towing circumstances, which includes the GVWR, GAWR and GCWR as well as adequate trailer brakes. Please refer to the Operator's Manual of your vehicle for further towing information.

Note: Specifications are subject to change without notice.

EXTERIOR FEATURES

- Panoramic 10 Ft. Slideout Window
- Front Radius Lighting
- MORryde StepAbove Solid Steps
- Safe-T-Rail Door Assist on Main Entry Door
- Electric Awning w/Multicolor LED Strip & Remote
- Electric Tongue Jack
- G20 Tinted Privacy Windows
- Hot/Cold Outside Utility Shower w/ Hands Free Holder
- Black Tank Flush
- Battery Disconnect Switch
- Siphon 360 Holding Tank Roof Vent
- (2) 20 lb. LP Tanks
- Black ABS LP Bottle Cover
- LP Quick Connect
- Flush Mount Baggage Doors w/Radius Corners
- Diamond Plate Rock Guard
- Stabilizer Jacks
- Premium JBL Exterior Speakers
- Friction Hinged Black Glass Entry Door with Window
- Exterior 110V G.F.C.I Protected Receptacle
- Exterior RG-6 Coax Cabling and Satellite Prep
- Exterior TV Hookup
- Rain Gutters with Drip Spouts
- Rear View Camera Prep
- Exterior Camp Kitchen (243RBS, 263FKDS, 283RKS, 303RKDS)
- Bottle Openers (Exterior Camp Kitchens)
- Pets - "Leash Link"; Quick Hookup D-Ring
- Universal Solar Prep w/Roof & Chg. Contoller Connections & Wiring
- Rear Ladder Prep
- Front Landscape Picture Window (263FKDS)

INTERIOR FEATURES

- Panoramic 10 Ft. Slideout Window
- Solid Surface Kitchen Countertops, Seamless Thermofoil Countertops Outside of Kitchen Area
- Porcelain Toilet
- GE Glass Stainless 10.7 Cu. Ft. 12V Refrigerator (N/A 323MAZE)
- GE Stainless 3-Burner Gas Range with Metal Back-Lit Knobs
- Range Hood

- o GE Stainless Microwave W/Glass Turn Table
- o Premium Audio JBL Aura Cube Multi-Zone Function Media Center
- o Premium JBL Interior Speakers
- o SLS (Sit-Lounge-Sleep) Sofa with Interior Storage
- o Deep Basin Farm Style Sink
- o Residential-Style Kitchen Faucet w/Pull Down Sprayer
- o Stainless Steel Drying Rack
- o High Pressure Glass Rinser
- o Paper Towel Holder
- o All-In-One Control Panel with Dimmer Switch
- o Brick Style Backsplash
- o Congoleum Woodplank Linoleum Flooring
- o 4000 Lumin LED Interior Touch Lighting
- o Hard Valance Window Treatments
- o Pedestal Thermofoil Dinette Table
- o Under Bench Dinette Storage (Per Floorplan)
- o Easy Access Booth Dinette Storage Doors
- o 12V 14" Living Room Power Vent Fan
- o 12V 14" Bathroom Power Vent Fan
- o ABS Tub/Shower Surround w/Shelves
- o Shower/Coat Hooks
- o Skylight Above Tub/Shower
- o Glass Step-In Shower w/ABS Surround (Per Floorplan)
- o Medicine Wall Cabinet with Mirror
- o Bedroom Surface Mounts USB Ports (Each Night Stand)
- o Kitchen USB's & Outlets
- o USB Surface Mounts Near Bunk Beds
- o Solid Master Bedroom Door(s) (Per Floorplan)
- o Solid Bunk Room Door (Per Floor Plan)
- o Mirrored Wardrobes in Master Bedroom
- o Master Bedroom Overhead Cabinets
- o Underbed Storage w/Separation from Outside Front Storage
- o Designer Fitted Master Bed Sheet
- o Full Lino in Slide-Outs and Bedrooms (Carpetless)

CONSTRUCTION & EQUIPMENT FEATURES

- o GE 60K BTU Tankless On Demand Water Heater
- o GE 13,500 BTU Fully Ducted A/C with Heat Pump
- o 8' Interior Height (6' 9")
- o Undermount Spare Tire
- o 35,000 BTU Auto-Ignition Furnace w/Wall Thermostat (N/A 283RKS)

- o Upgraded Aluminum Wheels
- o Magnetic Hands Free Baggage Door Latches
- o Cambered Structural Steel I-Beam Frame
- o Norco Electromagnetic, Powder Coated Chassis
- o Full Length Frame Outriggers
- o 5/8" Tongue & Groove StableDeck Flooring
- o 2"x3" Floor Joists on Approximately 12" Centers
- o 5" Floor To Frame Steel Lag Bolts
- o Enclosed, Fully Sealed Corrugated Underbelly
- o Darco Subfloor Protective Wrap/Enclosure
- o Seamless Alpha Roof Membrane with Lifetime Warranty
- o Cross-Braced Engineered Roof Trusses w/5" Crown
- o 3/8" Fully Decked Walk-On Roof
- o Screwed Cabinet Construction w/Pocket Bored Lumber Core Stiles
- o 5/8" Plywood Under Bed & Dinette Base
- o Easy-Trac Rack and Pinion Through Frame Main Slide-Out(s)
- o R-7 Fiberglass Insulation Throughout
- o Water Heater By-Pass Winterization Kit
- o 12V Demand Water Pump
- o Premium Exterior Graphics Package
- o Upgraded Front Graphics Design
- o Platinum .024" Aluminum Exterior w/.030 Skirt Metal
- o Smooth HD Aluminum Radius Front
- o Polished HD Aluminum Fender Skirts
- o EZ Lube Axles w/Leaf Spring Suspension
- o Self Adjusting Brakes
- o Roto-Cast Holding Tanks
- o Bumper w/ Drain Hose Carrier and End Caps
- o Residential-Style In-Floor Ducted Heat
- o Magnadyne Antenna
- o 30 Amp Electric Service w/ 100v 45-Amp Power Covt.
- o 50 Amp Electric Service (Standard on 303RKDS, 313RLTS, 323BHDS, 323MAZE, 343BHTS)

SAFETY FEATURES

- o Smoke Alarm
- o LP/CO Gas Detector
- o Fire Extinguisher
- o Fire Escape Windows
- o Entrance Door Window
- o Dead-Bolt Lock on Entry Door
- o Specialized Dispatch Services (1 YR Roadside Assistance)

OPTIONS

- BAL 5.3 Automatic Leveling System
- GE 15,000 BTU Ducted A/C IPO 13.5 A/C with Heat Pump
- 50 Amp Service w/ 2nd 13.5 A/C
- 50 Amp Service w/2nd A/C Prep
- Peak Performance Solar Package - 30A Controller w/ 200W Panel
- Free Standing Table w/4 Chairs (N/A U-Dinette Floorplans)
- Power Theater Seating with Reclining Features (Standard on 313RLTS) (N/A 323MAZE)
- Fireplace with Electric Heater in the Living Room (N/A 283EPIC)
- 200 LB. Flip-Down Cargo Rack (N/A 283EPIC)
- 7 Cu. Ft. LP Gas/Electric RV Refrigerator w/Reversable Door Inserts
- CSA Standards