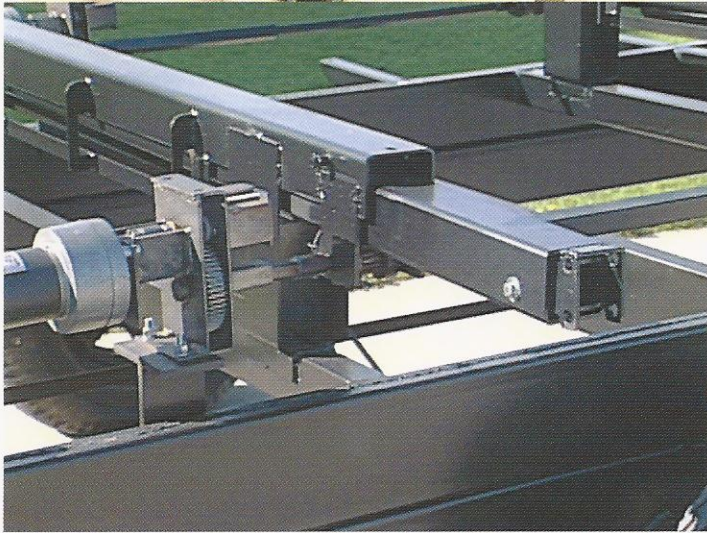




AFFORDABLE PERFECTION



F35SKQ in Coco decor



WHY CARRIAGE

We stress the importance of **quality** in manufacturing. With superior **quality** come reliability, durability, and most importantly, customer satisfaction. **Quality** that has withstood the test of time. We are a progressive thinking company mindful of the future. We continually explore new directions in search of the best equipment and designs. We devote much of our attention to the engineering of our units to maximize the full potential of every component. It's more than our stunning interiors that set us apart from other manufacturers. The **quality** of what we use to achieve that look on the inside is just as important as what we use on the outside and underneath, even where you might not first glance. Looking below the surface of each unit is where you will begin to understand what makes a Carriage so unique. We insist on meticulous installation of all the components on every coach. Adding the exquisite interior fabrics and custom made cabinetry and furniture to the top **quality** foundation we create for every unit makes for an incomparably finished unit, unequaled and unavailable anywhere else in the industry.

QUALITY CRAFTSMANSHIP

After building RVs for over 37 years, we have gained our customers' respect through hard work and unwavering support. We have earned a reputation as the industry innovator, leading the way in style and design. We have always been dedicated to using the finest **quality** materials to create an RV that delivers you to what we refer to as **the best fifth wheel in the industry**. Our units are built for those with discriminating taste who can appreciate the Carriage difference. **Quality** craftsmanship and the underlying sense of family pride that is built into each unit. We have a history in this business. We have been committed to excellence for over 37 years and will be there for you in the future.

WE DESIGN AND MANUFACTURE OUR OWN FRAMES

ADVANTAGE: We engineer additional support into our coach for superior frame design, (stiffness and rigidity). We also design them to maximize exterior storage.

BENEFIT: We offer a stronger frame than the standard I-beam or C-Channel frame our competitors use. We also have the confidence to offer an exclusive 5 or 7 yr frame warranty. The **BEST** warranty in the RV Industry.

2" X 6" DOUBLE STACKED BOX TUBE STEEL (7 ga. front & 11 ga. rear)

ADVANTAGE: Eliminates frame flex, and offers greater strength vs. typical 10" or 12" I-Beam frame.

BENEFIT: By eliminating flex, the unit will ride better, respond to road conditions better, and will last longer than the competition, protecting your investment.

OUR SLIDE MECHANISMS ARE WELDED TO THE TOP OF OUR FRAMES

ADVANTAGE: No "holes" are cut into mainframe that will weaken the structure of your coach.

BENEFIT: With already having a more superior frame than the competition, Carriage's frames become the strongest, after the competition torches 2, 4, 6, or even 8 holes to get their slide mechanisms to extend out past their frames.



CELADON INTERIOR



COCO INTERIOR



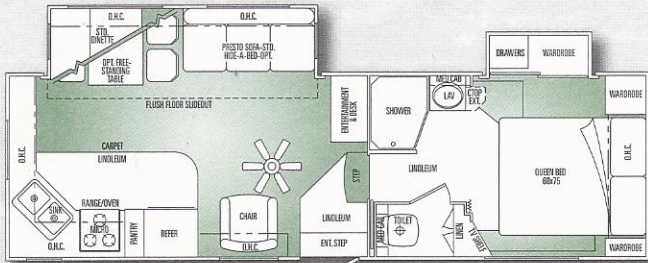
VINTAGE INTERIOR



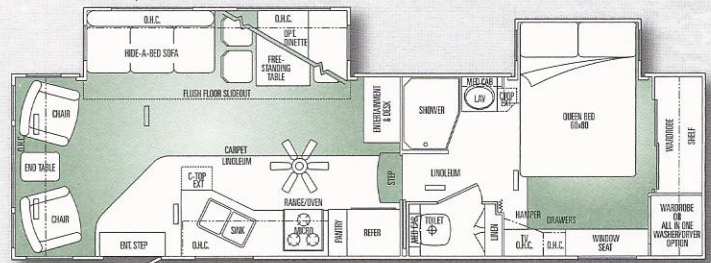
Carriage

CAMEO LXI

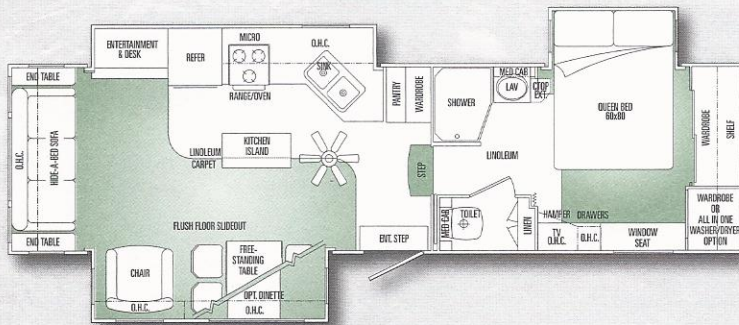
2006 CAMEO LXI FIFTH WHEEL FLOORPLANS



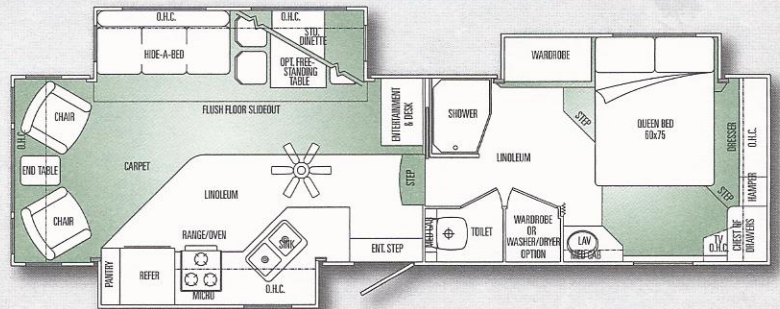
F27RKS



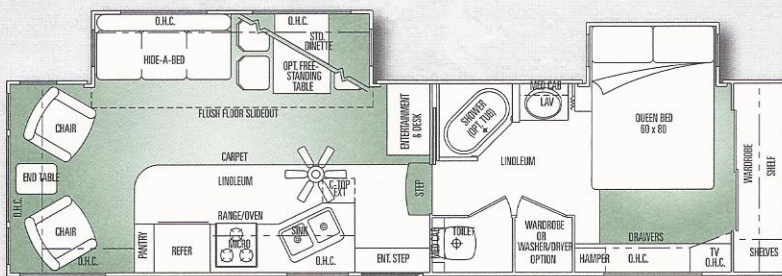
F30RLS



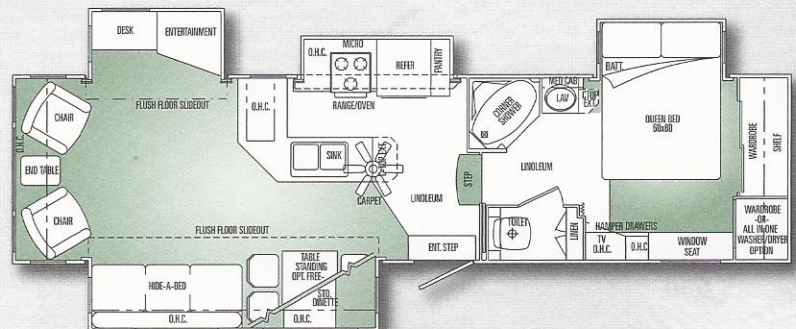
F31KS3



F32KS3



F32RLS

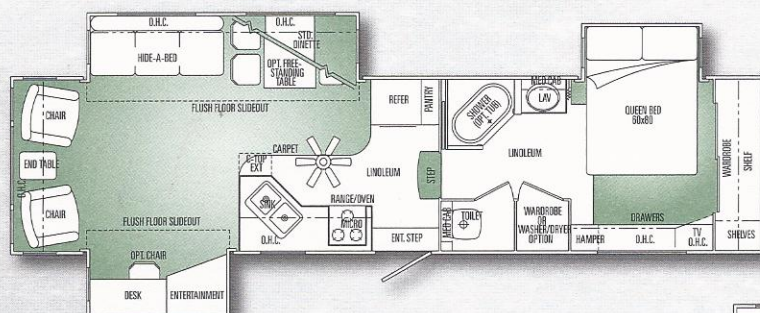


F33CKQ

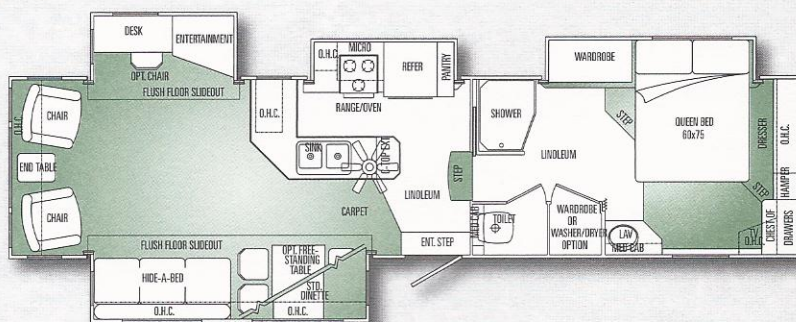
Carriage

CAMEO LXI

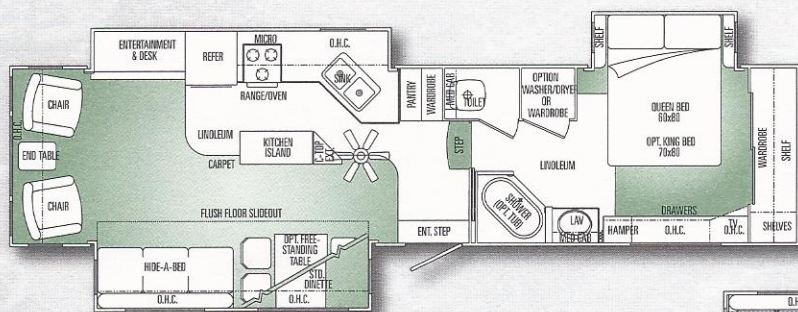
2006 CAMEO LXI FIFTH WHEEL FLOORPLANS



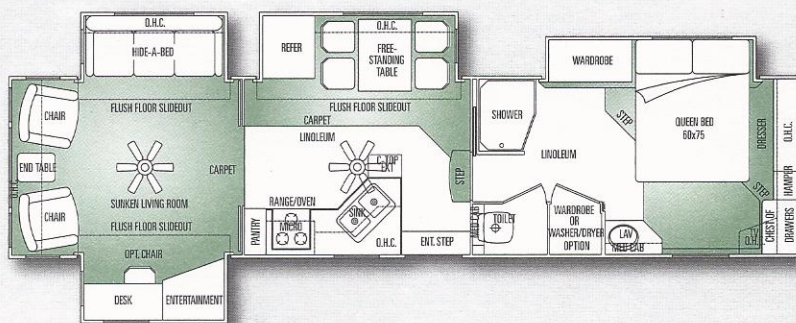
F34CK3



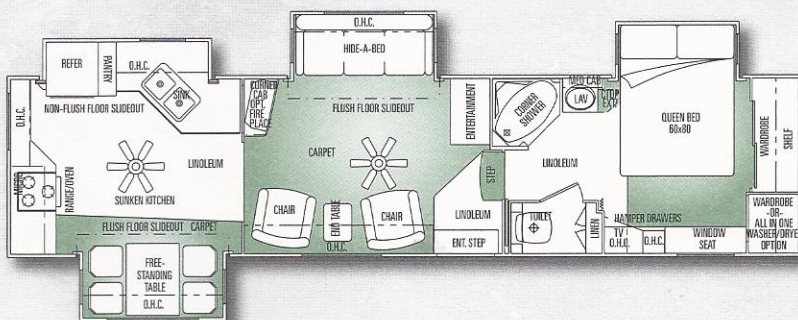
F35CKQ



F35KS3



F35SLQ



F35SKQ

2006 CAMEO LXI FIFTH WHEEL SPECIFICATIONS

STANDARD PACKAGES

"BEST BUILT" PACKAGE

- Front snap pins
- Rear ladder
- Black tank flush
- Rear second basement (60 cubic feet)
- Nev-R-Lube axles
- MOR/ryde RE rubber equalizer system
- Exterior shower

"LUXURY" PACKAGE

- 22" oven
- 24" Sony Wega flat screen TV
- Sony AM/FM/CD/DVD Home Theatre System 5.1 w/subwoofer
- Slide-out pantry drawers
- Window in stool room
- Pillow top mattress
- Water purifier
- 15K BTU A/C
- Euro swivel recliners w/foot stool
- Wood headboard
- Three zone Xelogen lighting w/dimmer switches
- Carpet runner at shower

INTERIOR

STANDARD FEATURES

- Residential quality carpet w/pad throughout
- Armstrong® Tuffgaud Linoleum @ kitchen & bath (Includes entrance on select models)
- Oak raised panel doors & solid wood drawers
- Cathedral crown overhead oak doors
- Radius cabinet styles throughout
- Merit oak cabinetry
- Brushed nickel handles on all cabinet doors/drawers
- Full oak fluted fascia on living room slide-out
- Designer window treatments throughout
- Day/night shades
- Padded vinyl ceiling
- Xelogen lights in kitchen & bath overheads and main ceiling
- Numerous well placed 110V outlets throughout

OPTIONS

- Decorator kit
- Natural Maple cabinetry
- Honey Maple cabinetry
- Arizona Room slideout (33' - 35')
- Black-out Day/Night shades
- Central vacuum system

SYSTEMS

STANDARD FEATURES

- 50 amp service w/marine power cord
- AC/DC power converter w/charger (55 amp)
- Floor-ducted forced air furnace w/electronic ignition
- (27'-32') 30,000 BTU furnace

- (33'-35') 35,000 BTU furnace
- Dual 30# LP gas bottles w/auto change over
- Double battery box compartment
- Full systems monitor panel
- High output demand fresh water system
- Large capacity holding tanks
- Holding tank evacuation system
- Large capacity fresh water tank
- Holding tanks: heated & insulated w/fully enclosed underbelly
- Black water tank flush kit
- Winterizer kit
- Wall switched ceiling lights with dimmer
- Upgrade 12V interior light switches
- TV jack in living room
- Prep for electric awning
- 15,000 BTU ducted air conditioner - Carrier™
- 10 gal. gas/electric water heater w/DSI
- Water heater by-pass
- Ceiling fan
- Battery shut-off switch
- 12V power vent in bathroom & stool room

OPTIONS

- Battery: 12V installed
- Generator prep w/auto change over (N/A 27' models)
- Generator Onan 3600 Microquiet (30'-35' only)
- Solar panel prep
- Prep for 2nd A/C
- Washer/dryer: prep (N/A F27RKS)
- Washer/dryer: 2 pc. Kenmore (30'-35') (N/A 27RKS, 30RLS, 31KS3, 33CKQ & 35SKQ)
- Washer/dryer: Splendide combo (all-in-one) (N/A F27RKS)
- 15,000 BTU ducted air conditioner w/heat pump - Carrier™
- Roof vent - power (extra)
- Fantastic® vent w/wall switch
- Fantastic® vent w/thermostat & rain sensor

CONSTRUCTION/SAFETY & RUNNING GEAR

STANDARD FEATURES

- Aluminum superstructure (heavy gauge welded)
- 1 1/2" x 2 1/2" Aluminum welded main floor
- Fully insulated 2" slide-out floors (R8)
- Heavy duty rack & pinion slide-out system w/flush floor
- Double squeeze around slide-out rooms
- 96" wide units
- Aluminum constructed sidewalls
- 1/2" exterior grade plywood roof decking
- 5" aluminum trussed roof on 16" centers
- Extra bracing @ all stress areas
- Owens-Corning® insulation floors, walls & roof
- Sidewall w/built-in vapor barrier & full Fiberglass
- 10" box frame (27'-30')
- 12" box frame (31'-35')
- Fully painted frame
- Heavy duty leaf spring suspension
- Dual axles w/high GAWR rating
- Adjustable spring hangers
- MOR/ryde RE (rubber equalizer) suspension
- Nev-R-Lube axles
- Heavy duty four wheel electric brakes (2" x 12")
- Break-away switch
- Shock absorbers

- Stainless center caps & lug nuts ST235/80R16 "E" range
- Aluminum wheels
- Stabilizer jacks (1 pair)
- 12V power front jack
- Snap pins @ front jack legs
- Smoke detector
- L.P. leak detector
- CO Detector
- GFI electrical circuit protection
- Spare tire - crank up

OPTIONS

- Raise axles for 4-WD truck
- MOR/ryde pin box
- Greaseable Shackles
- Hitch Ext. adapter @ pin box

EXTERIOR

STANDARD FEATURES

- Built in sewer hose compartment
- Automotive style bumper
- Safety glass windows w/GL20 solar tinted glass (radius)
- Slider windows @ ends of living area slide-out room
- "Big Easy" triple entrance steps w/non-slip grips (except F27 - F30)
- One piece TPO vinyl roof w/3" crown
- Flush mount baggage doors
- Radius designed entrance door
- Dead-bolt locks on entry doors
- Slide-outs-exterior corner cap protectors
- Courtesy light @ FW hitch
- Courtesy light @ sewer hook-up
- Scare lights (2) @ front corners
- 12V patio light & step light w/wall switch
- Lights in outside storage compartments
- Roof Ladder
- Pull-out Grab Handle @ entrance
- Fiberglass sidewalls: High gloss gelcoat
- Molded fiberglass front cap: High gloss gelcoat
- Molded Fiberglass cap: 1 pc. rear: High gloss gelcoat
- Carefree patio awning
- Awning rail w/gutter on both sides w/down spouts
- Exterior Shower
- Felt lined exterior compartments

OPTIONS

- Dual Pane windows w/GL20 solar tint glass
- Custom paint exterior with custom taillights
- Accessory receiver w/bike rack
- Sun control full view box awning over Arizona room
- Electric awning (Patio)

ENTERTAINMENT

STANDARD FEATURES

- TV antenna w/power booster
- Sony AM/FM/CD/DVD home theater system 5.1 with subwoofer
- Television 24" stereo Sony Wega
- Cable TV & phone jack hook-up
- Satellite prep (RG-6 cable)
- TV jack w/shelf in bedroom
- Desk @ E-center

2006 CAMEO LXI FIFTH WHEEL SPECIFICATIONS

OPTIONS

- TV slide & swivel (some models)
- Slideout keyboard tray (F34CK3, F35CKQ, F35SLQ)

KITCHEN

STANDARD FEATURES

- Laminate countertop w/Corian™ edging
- Countertop extension-fold down (N/A some models)
- Built-in range hood w/power exhaust fan & light
- Range cover – (bi-fold cover)
- Acrylic double sink w/2 covers
- Pull-out kitchen faucet
- Flip down accessory drawer
- Free standing table w/4 chairs & storage seats
- Kitchen Island Cabinet (F31KS3 & F35KS3 only)
- Microwave oven
- Refrigerator: Larger 2-door Norcold N821 w/oak fronts
- Pantry w/slideout drawers
- Water purifier w/separate faucet

OPTIONS

- Booth dinette
- HPL flooring
- Refrigerator: Norcold 4-dr 1200LR (F32KS3, F32RLS, F33CKQ, F34CK3, F35CKQ, F35SKQ)
- Refrigerator: Norcold 10'
- SSV countertops w/recessed sink & 2 covers

LIVING ROOM

STANDARD FEATURES

- Residential furniture w/designer fabrics
- Thicker higher density foam in all furniture
- Mirror w/coat hooks N/A F30RLS
- Overhead cabinets in slide-outs above sofa & dinette
- Brushed Nickel wall lights at chair(s)
- Free standing end table w/magazine rack
- Sofa: Hide-A-Bed
- Euro swivel/recliner w/foot stool
- Crown molding at ceiling

OPTIONS

- Recliner: Swivel w/"Rock 'n Lock" mechanism (Carrara)
- Fireplace (F33CKQ, F34CK3, F35CKQ, F35KS3, F35SLQ & F35SKQ)

BATHROOM

STANDARD FEATURES

- Oversized medicine cabinet w/extra large mirror
- Large convenient bathroom vanities
- Brushed Nickel light bar – medicine cabinet
- Wall switched lights
- 12V power vent
- Porcelain stool
- Shower bubble w/shade
- Shower door upgrade (brushed nickel)
- Shower stall 1 pc. molded fiberglass
- Towel bar

- Window in stool room
- Carpet runner @ shower

OPTIONS

- Garden tub (some models) 1 pc. molded fiberglass
- SSV countertops - lavatory

BEDROOM

STANDARD FEATURES

- Designer bedroom treatment
- Pillow Top Mattress
- Piston lift queen bed base w/felt lining (some models)
- Drawer under bed base (bedroom suite models)
- Privacy door in bedroom
- Full stand-up bedroom
- Wall switched overhead light
- Cedar lined wardrobes
- Wood Headboard w/fabric insert
- Duvet cover w/pillows
- Bedroom Slide-out (30'-35')
- Bedroom Wardrobe Slide-out (F27RKS only)
- Brushed Nickel lights each side of bed (slide-out only)
- Clothes hamper (where applicable)

OPTIONS

- King Bed (F35KS3)
- Floor safe

CAMEO LXI - Fifth Wheel	F27RKS	F30RLS	F31KS3	F32KS3	F32RLS	F33CKQ	F34CK3	F35CKQ	F35KS3	F35SLQ	F35SKQ
Approx. Exterior length	28' 5"	30' 11"	31' 11"	32' 11"	32' 11"	33' 11"	34' 11"	35' 11"	35' 11"	35' 11"	35' 11"
Approx. Exterior width	96"	96"	96"	96"	96"	96"	96"	96"	96"	96"	96"
Approx. Exterior Height w/AC	12' 6"	12' 6"	12' 8"	12' 8"	12' 8"	12' 8"	12' 8"	12' 8"	12' 8"	12' 8"	12' 8"
Approx. Dry Axle Weight (lb)*	7,525	8,115	9,100	8,935	8,320	9,910	9,610	10,175	8,900	10,305	10,865
Approx. Hitch Weight (lb)*	1,830	2,000	1,845	2,180	2,180	2,040	1,775	2,215	1,945	2,055	1,910
Approx. Total Dry Weight (lb)*	9,355	10,115	10,945	11,115	10,500	11,950	11,385	12,390	10,845	12,360	12,775
Approx. Average Load Capacity (lb)*	4,475	3,885	2,900	3,065	3,680	4,090	2,390	3,825	3,100	3,695	3,135
Axles (number of)	2	2	2	2	2	2	2	2	2	2	2
Fresh Water Capacity w/ water heater** 70 Gal.	70 Gal.	70 Gal.	70 Gal.	70 Gal.	70 Gal.	70 Gal.	70 Gal.	70 Gal.	70 Gal.	70 Gal.	70 Gal.
Black/Gray Holding Tank Capacity	55/55 Gal.	55/55 Gal.	55/55 Gal.	55/55 Gal.	55/55 Gal.	55/55 Gal.	55/55 Gal.	55/55 Gal.	55/55 Gal.	55/55 Gal.	55/55 Gal.

* Above listed weights are actual units that include all slide out rooms and all popular options ordered on most coaches. These weights are provided as a guideline only. The actual weight of each individual unit (all units are weighed as they come off the production line) is posted inside each vehicle.

** Fresh water capacity includes the combined capacity of the fresh water tanks and the water heater.



Carriage
CAMEO LXI

www.carriageinc.com

Post Office Box 246 • Millersburg, Indiana 46543 • (574) 642-3622

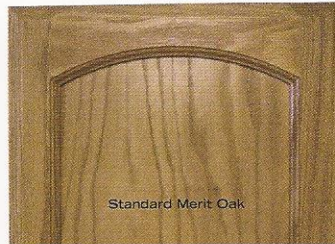
© 2006 Carriage, Inc. Printed in U.S.A.



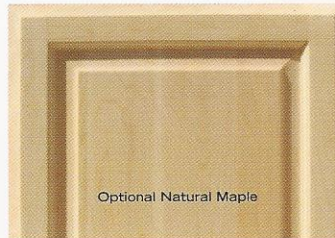
Due to continual improvement of Carriage Inc. products, we reserve the right to change material, colors, specifications and prices at any time without prior notification. Selected decorator items used in the photos are not part of the product. Carriage, Inc. assumes no responsibility for any error in type or print reproduction of specifications or color in this brochure.

2006

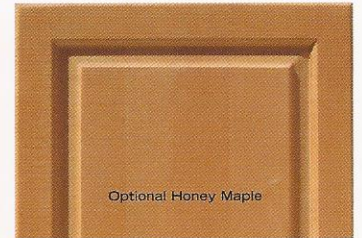
WWW.CARRIAGEINC.COM



Standard Merit Oak



Optional Natural Maple



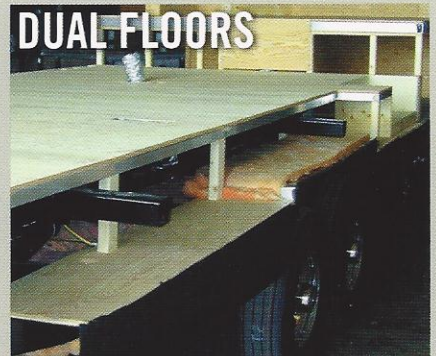
Optional Honey Maple



3 SEPARATE LAYERS OF INSULATION FOR A "TRUE" R21 INSULATION VALUE

ADVANTAGE: Carriage completely encloses and insulates the underbelly, maximizing heating and cooling capacity.

BENEFIT: Provides a comfortable living area, while saving you money in heating and cooling costs.



DUAL FLOORS

2 SEPARATE FLOORS

ADVANTAGE: Plumbing, holding tanks, electrical components, slide mechanisms, and heat ducts are enclosed within the floor cavity.

BENEFIT: There is no loss of cabinet space to house these components, maximizing interior storage.

2 "CONTACT POINTS" FOR YOUR SIDEWALL

ADVANTAGE: Unlike our competition who uses a single attachment to the main frame, the Dual Floor system, utilized at Carriage, provides two contact points for our sidewall. The main frame gives vertical support while the main floor gives lateral support.

BENEFIT: Without that second attachment for the sidewall, our competitor's sidewall allows for considerable sway creating stress on joints causing broken welds and delaminations. When this happens it takes extensive work to your coach, that costs you time and money.

2" X 3" ALUMINUM STUDS WELDED 16" ON CENTER

ADVANTAGE: Lighter weight with maximum support, creating a strong flooring design.

BENEFIT: Stronger floor, with no warping like a wood floor joist, no chance of deterioration, and less upkeep for you.



Now you can enjoy the Carriage Cameo LXI experience with a quality built, lightweight welded aluminum RV. Cameo LXI features the comforts of home and the quality you expect from a Carriage product. With innovative floor-plans and numerous luxuries, the Cameo LXI blends style, function, and livability to create one of the best values on the road today.



F35KS3 in Coco decor



Celadon decor



Vintage decor



You'll appreciate the full stand-up bedroom with wall switched overhead lights. Some floor-plan layouts offer wardrobe and bed slide-outs and all feature wardrobes that are cedar lined. All bedrooms have large drawers for plenty of storage and a convenient under-bed storage drawer in the bedroom suites. Residential style headboard, window treatments and stylish duvet cover give you the feel of home. Just one more example of Carriage's attention to detail with quality materials and construction.

SOLID CONSTRUCTION TOP TO BOTTOM

Cameo LXI's roof design utilizes 5" thick aluminum roof trusses 16" on center.



CARRIAGE EXCLUSIVE WARRANTY THE BEST WARRANTY AVAILABLE PERIOD.



This is the best Warranty in the RV Industry. No Exclusions for full timers. Unlike our competition, we want you to enjoy our coaches year-round.

2006 CARRIAGE CAMEO

Carriage Inc. manufactures Royals International, Carriage, Carri-Lite, Cameo LXI and Compass lines of fifth wheels and travel trailers. Founded in 1968, our company stresses job pride and skilled craftsmanship to ensure that Carriage products continue to meet the highest standards of excellence. From the beginning, the Carriage philosophy has always been "to build a quality unit, not quantity mass-produced units" and our

continued commitment to that ideal has resulted in a 37 year tradition of providing beauty, durability, value, and service to our customers.

To better serve our customers plant tours have been expanded and are now available Monday thru Friday starting at 9:30 AM (1 tour per day). Tours will leave from the Travel Club Office in the Carriage Courtesy Park. We encourage you to come and see how Carriage quality is built into our products.

CARRIAGE EXCLUSIVE WARRANTY. The **BEST Warranty Available Period.**

2yr/5yr Warranty on Cameo LXI

ADVANTAGE: This is the best Warranty in the RV Industry.

BENEFIT: NO EXCLUSIONS FOR FULL TIMERS. UNLIKE OUR COMPETITION, WE WANT YOU TO ENJOY OUR COACHES YEAR-ROUND.



INDUSTRY LEADING SIXTH TIME QUALITY CIRCLE AWARD WINNER

Carriage Inc. received it's industry leading sixth (6) Quality Circle Award in December 2004 for fifth wheels. Dealer Satisfaction in areas such as sales, product management, and service/warranty support. It is in these products, that are designed and built by our outstanding groups of employees, that makes this award possible.

We are most proud of this recognition, because it is voted on by our dealer body, not industry peers.



POST OFFICE BOX 246
MILLERSBURG, INDIANA 46543
(574) 642-3622

www.carriageinc.com



Due to continual improvement of Carriage Inc. products, we reserve the right to change material, colors, specifications and prices at any time without prior notification. Selected decorator items used in the photos are not part of the product. Carriage, Inc. assumes no responsibility for any error in type or print reproduction of specifications or color in this brochure.