



# SUPER STAR

2025 SUPER CLASS C MOTORCOACH

SUPER STAR

---

## The Guiding Light to Adventure

Experience the unique quality that shines throughout the 2025 Super Star. With features designed for a smooth ride, owners will stay comfortable through even the longest drives. Plus, with thoughtful updates throughout, you'll discover even more reasons to adventure with a Newmar.



# Freightliner® M2 106 Chassis

Cummins L Engine | 360 HP | 1,150 lb./ft. torque | Peppercorn Full-Paint Masterpiece Finish™ Exterior



37' - 40' / 5 floor plans





## COCKPIT

### **Air Ride Captain's Chairs**

Pneumatic Lumbar Support

### **Skylight**

Power Shade

### **Xite Dash Radio**

12.3" Monitor\*

Nav-N-Go Navigation

Apple CarPlay®

### **Harman/JBL 180w Sound System and Subwoofer**

### **Detroit Assurance 5.0 Lane Departure Warning System**

#### **Detroit Assurance Safety System**

Object Detection

Active Brake Assist

Pedestrian Detection

Auto On/Off Headlights

Auto Rain Sense Wipers

Intelligent High Beams

#### **Tire Pressure Monitoring System**

### **Omniview NS360 Camera System (Optional)**







Floor plan 4059 with Brighton décor and Two-Tone Summit Upper and Sable Lower cabinets

## CABIN

**Three Décor Options: Brighton, Palisades, and Saguaro**

**74" Powered Theater Seating\*** (Optional)

**50" Samsung® 4K LED TV**  
Bose® Soundbar

**Power Stepwell Cover**

**Porcelain Tile Flooring**

**Window Treatments**

*\*See Features and Options for all available furniture configurations*





# CABIN

**Maple Cabinet Doors in High Gloss or Suede Finish\***

- Available in Four Solid Colors and Three Two-Tone Options\*
- Soft-Close Cabinet Doors
- Soft-Close Drawers
- Undermounted LED Lights

**Slideout Fascia and Feature Ceiling**

**Two 15K BTU Penguin™ Heat Pump Air Conditioners**

**WiFiRanger Everest System with Aspen Router (Optional)**

**Starlink Internet System\* (Optional)**

**Central Monitor Panel**

**Connected Solutions Mobile App**  
(to control elements of the coach)

\*New for 2025



Floor plan 4059 with Brighton décor and Two-Tone Summit Upper and Sable Lower cabinets

**CABINET FINISHES**



SUMMIT



MOREL



SEDONA



SABLE





## GALLEY & DINETTE

**All-Electric Flush Mount Induction Cooktop**

**Convection Microwave**

**19.7 Cu. Ft. Whirlpool® Refrigerator**

**Dishwasher in a Drawer** (Optional)

**Pantry**

Pull-Out Shelves

Push-to-Release Drawer Slides

**Polished Solid-Surface Countertops**

**Tile Backsplash**

**Euro Booth Dinette\*** (Optional)

*\*Additional dinette configurations available; see Features & Options for details*











## BEDROOM

### **Queen-Size Bed\*** **with Pillow Top Mattress**

Adjustable Support Air Bed (Optional)  
Inclining and Retracting Bed Mechanism\*\*

### **Samsung® 4K LED TV**

### **Bedroom Speakers**

### **Lighted Wardrobe**

Safe (Optional)

### **Dimmable Reading Lights**



\*Bed sizes vary by floor plan, see Floor Plans for more details  
\*\*New for 2025, standard on Floor Plan 3729



# BATHROOM

- Sentrel™ Acrylic Shower Walls with Glass Door\***
- Vanity, Backsplash, and Hardware**
- Polished Solid-Surface Countertops**
- Aqua Miser® Shower System**
- 150-Gallon Fresh Water Tank**
- Linen Cabinet**



*\*Shower sizes vary by floor plan  
Half baths available on select floor plans*





## EXTERIOR & STORAGE

**Industry-Exclusive Full-Paint Masterpiece Finish™ with Cut & Buff**  
New Exterior Design and Color Combinations\*

**Girard® Dual Nova Side Awnings** (Optional)

**Power Baggage Door Locks**

**Lighted Exterior Storage Compartments**

**Dometic® Freezer on Pull-Out Tray** (Optional)

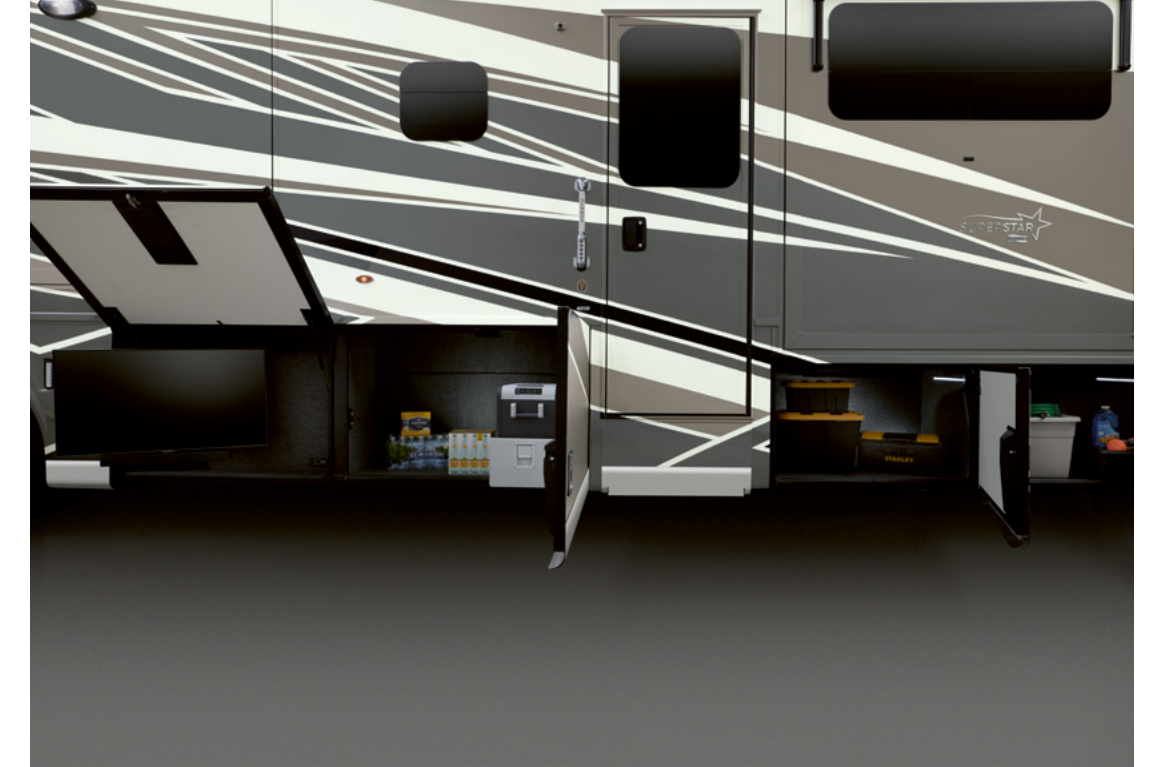
**Exterior Entertainment Center** (Optional)

43" Samsung® LED TV

Bose® Soundbar

**Rear Cap Storage**

*\*New for 2025*





## EXTERIOR

**Exterior Shower**

**8.0 kW Cummins Onan® Diesel Generator**

**Four Flexible 110w Solar Panels  
on Roof** (Optional)

**10w Solar Panel**  
(to charge chassis battery)







# DESIGN OPTIONS

---

INTERIOR AND EXTERIOR



# GALE FORCE



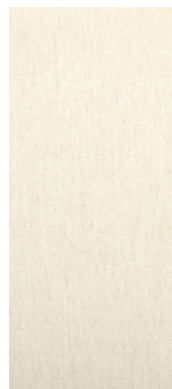
| Charcoal Tweed Awning



**BRIGHTON INTERIOR**



Furniture



Fabric



Fabric



Flooring



Counter Top

*\*Exterior colors and interior décor options can be matched to customer preference.*



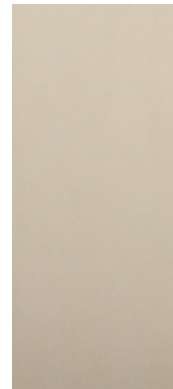
# GAUNTLET



| Charcoal Tweed Awning



**PALISADES INTERIOR**



Furniture



Fabric



Fabric



Flooring



Counter Top



# PEPPER CORN



| Charcoal Tweed Awning



**SAGUARO INTERIOR**



Furniture



Fabric



Fabric



Flooring



Counter Top

*\*Exterior colors and interior décor options can be matched to customer preference.*





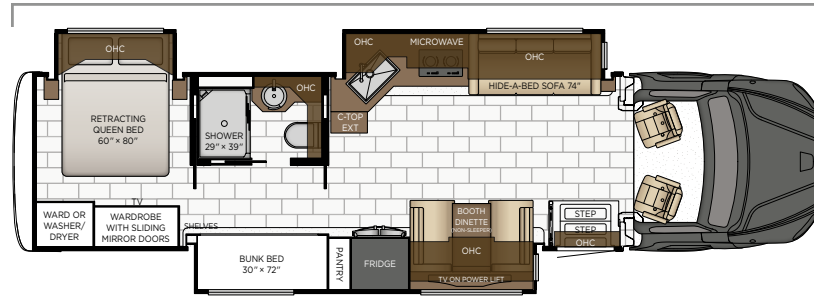
# FLOOR PLANS

---

AND SPECIFICATIONS



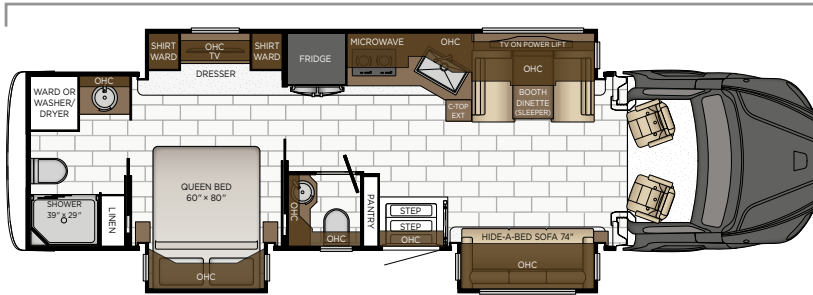
Length: 37' 11"



**3729**

Length	37' 11"	Grey Tank	60 gal.
Width	101.5"	Sewage Tank	40 gal.
App. Overall Height	13' 0"	Water Tank	150 gal.
Interior Width	95.5"	Furnace	50,000 btu
Interior Height	83"		

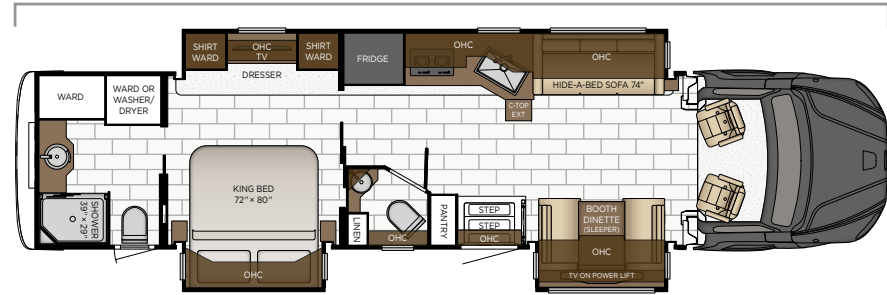
Length: 37' 11"



**3731**

Length	37' 11"	Grey Tank	60 gal.
Width	101.5"	Sewage Tank	40 gal.
App. Overall Height	13' 0"	Water Tank	150 gal.
Interior Width	95.5"	Furnace	50,000 btu
Interior Height	83"		

Length: 40' 11"

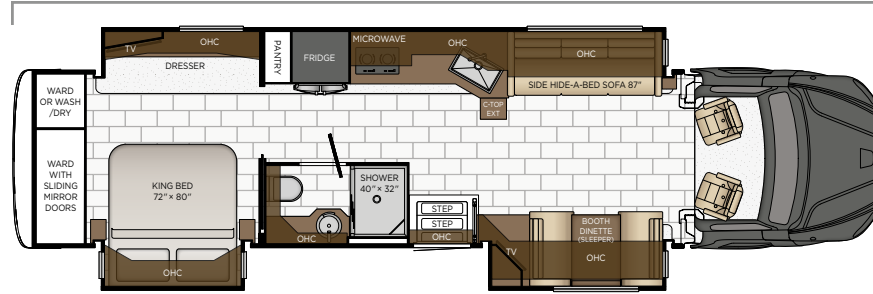


**4059**

Length	40' 11"	Grey Tank	60 gal.
Width	101.5"	Sewage Tank	40 gal.
App. Overall Height	13' 0"	Water Tank	150 gal.
Interior Width	95.5"	Furnace	50,000 btu
Interior Height	83"		

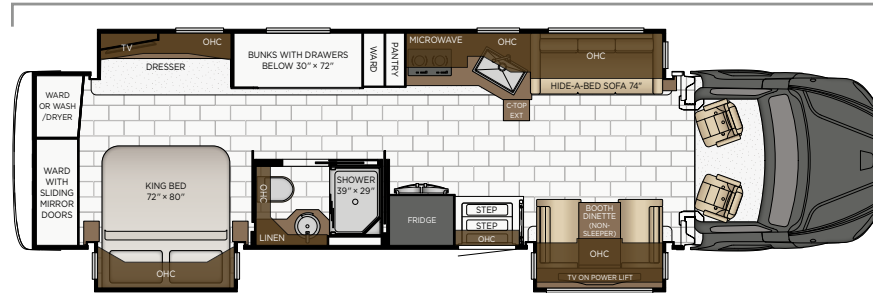


Length: 40' 11"



<b>4061</b>	Length	40' 11"	Grey Tank	60 gal.
	Width	101.5"	Sewage Tank	40 gal.
	App. Overall Height	13' 0"	Water Tank	150 gal.
	Interior Width	95.5"	Furnace	50,000 btu
	Interior Height	83"		

Length: 40' 11"



<b>4065</b>	Length	40' 11"	Grey Tank	60 gal.
	Width	101.5"	Sewage Tank	40 gal.
	App. Overall Height	13' 0"	Water Tank	150 gal.
	Interior Width	95.5"	Furnace	50,000 btu
	Interior Height	83"		



# Quality You Can Feel

Like a fine home, the 2025 Super Star is framed 16 inches on center, and is covered by a fiberglass roof with an integrated gutter rail.

SPARTAN®											
FLOOR PLAN	ENGINE HP	AXLE RATIO	FUEL CAP.	WHEEL BASE	FRONT GAWR	REAR GAWR	TAG GAWR	GVWR	GCWR	APP. UVW	APP. NCC
3729	360	4.89	100	320	16000 lb.	24000 lb.	0	40000 lb.	60000 lb.	34000 lb.	6000 lb.
3731	360	4.89	100	320	16000 lb.	24000 lb.	0	40000 lb.	60000 lb.	34000 lb.	6000 lb.
4059	360	4.89	100	345	17200 lb.	24000 lb.	0	41200 lb.	60000 lb.	34500 lb.	6700 lb.
4061	360	4.89	100	345	17200 lb.	24000 lb.	0	41200 lb.	60000 lb.	34000 lb.	7200 lb.
4065	360	4.89	100	345	17200 lb.	24000 lb.	0	41200 lb.	60000 lb.	34300 lb.	6900 lb.

**The content in our literature depicts and describes products that are subject to change. For the most recent images and information, please visit [NewmarCorp.com](http://NewmarCorp.com).**

Lengths, heights, widths, and dry weights are approximate. Weight will vary based on optional equipment added to the above base weight.

**GAWR:** Gross Axle Weight Rating is the maximum permissible weight for an axle.

**GVWR:** Gross Vehicle Weight Rating is the maximum permissible weight for a fully loaded motor coach.

**GCWR:** Gross Combination Weight Rating is the value specified by the manufacturer of the vehicle as the maximum allowable loaded weight of this motor coach and any towed trailer or towed vehicle.

**UVW:** Unloaded Vehicle Weight is the weight of this motor coach as built at the factory with full fuel, engine oil, and coolants. Does not include cargo, fresh water, propane gas, or dealer-installed accessories.

**NCC:** Net Carrying Capacity is the maximum weight of all occupants, including the driver, personal belongings, food, fresh water, waste water, propane gas, tools, tongue weight of towed vehicle, dealer-installed accessories, etc., that can be carried by the motor coach.

**Specifications supplied by the chassis manufacturer.**

**Super Star R-Values:**

- Roof R-Value = 19
- Sidewall R-Value = 11
- Floor R-Value = 16
- Basement R-Value = 4





# FEATURES

---

AND OPTIONS



## EXTERIOR FEATURES

Exterior Full-Paint Masterpiece Finish™ Graphics with Clearcoat Finish
Diamond Shield Protection on Front Cap
Convex Exterior Mirrors with Defrost and Remote Control
Chrome Exterior Mirrors
Automatic Triple Entrance Step—Hydraulic
Assist Handle at Entrance Door
Mud Flaps
Rear Protective Tow Guard with Stainless Steel Newmar Letters
Undercoating
Hydraulic Leveling Jacks
Stainless Steel Exterior Trim Pieces on Rear Cap
Painted Power Baggage Door Locks, Keyless Entrance Door with Touchpad and Doorbell
Power Lock Cockpit Doors
Rear Cap Storage

### OPTIONS

Chrome Power Baggage Door Locks
Flagpole Bracket
Stainless Steel Trim Kit for Exterior Compartment Doors
Storage Tray 27" x 56" Non-Power, Location-Bay 5
Storage Tray 31½" x 59" Non-Power, Location-Bay 5
Storage Tray 31½" x 59" Non-Power, Location-Bay 6

## CONSTRUCTION FEATURES

Gelcoated Fiberglass Exterior Sidewalls, Front and Rear Caps
Fiberglass Roof and Integrated Gutter Rail
Aluminum-Frame Sidewalls and Roof Construction, 16" on Center
5/8" Foam Insulation Laminated in Sidewalls and Ceiling
Automatic Mechanical Lock Arms on Slideout Rooms-Scissor Style
Egress Door with Ladder System*
Polar Pak R19 Batten Insulation in Roof
Rack and Pinion Flat Floor Slide

## WINDOWS, AWNINGS, & VENTS

Frameless Double-Pane Tinted Safety-Glass Windows
Fan-Tastic® Vent with Rain Sensor in Kitchen and Bathroom
Skylight Above Shower
Girard® G2000 Integrated Side Awning
Carefree Slideout Covers
Driver and Passenger Power Window

Sky Window in Cockpit with Power Shade
Bunk Windows*

### OPTIONS

Carefree Window Awning Package of (3)—1 Bedroom, 1 Off Door Side Living Room, 1 Door Side Living Room
Kitchen Window*
Two Girard® Nova Side Awnings

## CHASSIS FEATURES

100 Gallon Fuel Capacity
20K Rear Hitch for Towing with 2" Reducer and Drawbar with 2" and 2-5/16" Ball
Aluminum Wheels
Cruise Control
Manual Tilt and Telescope Steering Wheel
Anti-Lock Braking System
Chassis Battery Disconnect
Single Rear Axle
Standard M-2 106 Chassis Cummins 360 L Engine 320" Wheelbase, 24000# Rear Axle
Standard M-2 106 Chassis Cummins 360 L Engine 345" Wheelbase, 24000# Rear Axle
D.A.S.S.-Auto On/Off Headlights, Intelligent High Beams, Auto Rain Sense Wipers
D.A.S.S.-Object Detection, Active Brake Assist, Pedestrian Detection

## AIR CONDITIONING & HEATING

Two 15K BTU Penguin™ Heat Pump Air Conditioners
Chinook Dual Loop Heat with Continuous Hot Water
Dash Heater and Air Conditioner
Roof Air Conditioning Drainage System
Wall Mounted Sensors for Heating and Air Conditioning

### OPTIONS

Electric Radiant Heat Installed Below Main Floor Tile
---

## ELECTRICAL FEATURES

8.0 kW Cummins Onan® Diesel Quiet Series Generator
50 Amp Electrical Service with Flexible Cord with Automatic Transfer Switch
Eight 6-Volt House Batteries
Battery Disconnect Switch for House Battery
2800w Pure Sine Inverter
10w Solar Panel to Charge Chassis Battery
12 Volt Auxiliary Receptacle on Dashboard
Engine Block Heater



Exterior Security Light One Installed on Doorside
LED Lights Recessed in Ceiling and Underneath Overhead Cabinets
Manually Operated Hold-to-Run Slideout Switch
Cable TV Connection
Interior Courtesy Lights
Lights in Exterior Storage Compartments
USB Outlet at Dinette and Bedroom Nightstand
Spare Fuses in Chassis and House Fuse Panels
Automatic Generator Start on Low Battery or Temperature Setting
Energy Management System
Multiplex Monitor System 10.1" in Center of Coach with Interior Lighting and HVAC Controls
Dimmable and Adjustable Reading Lights at Head of Bed
110 Volt Recept in Bed Overhead with Two Pass-Through Ports
110 Volt/USB Outlet at Head of Each Bunk Area*
Power Rewind Reel with 50' Cord
Lights in Wardrobes
Connected Solutions App

<b>OPTIONS</b>
Solar Prep with Six Gauge Wire Ran from the Roof to the House Battery Compartment
Four Flexible 110w Solar Panels on Roof
Transfer Switch with Surge Protector
Cord Connection 30 Amp/120 Volt for Stacker Trailer
Exterior Security Lights, Two Doorside, Two Off Doorside and One Rear

**PLUMBING & BATH FEATURES**

Demand Water System
Sewage Holding-Tank Rinse
Dometic® 321 China Bowl Stool or Macerator Stool*
Sentrel™ Acrylic Shower Walls with Glass Door
Water Filter for Entire Unit
Exterior Shower
Auto Fill in Water Works Compartment
Power Water Hose Reel
Aqua Miser® Shower System
12 Volt Dump Valves
150 Gallon Fresh Water Tank

<b>OPTIONS</b>
Fold-Down Shower Seat
Hot Water Line Run to Front Door Side Storage Bay

**INTERIOR FEATURES**

Padded Vinyl Designer Feature Ceiling
Tile Floor in Kitchen, Bathroom and Living Areas
Carpeting on Slideout Floors
MCD Window Shades
Hardwood Slideout Fascia
Decorative Wall Art
Inlayed Three Panel Design Interior Passage Doors
Interior Assist Handle at Main Entry Door
Power Stepwell Cover
Fitted with Round Corner Non-Quilted Bedspread with Accent Pillows
Removable Transport Pads for Under Slideout Rollers
Wastebasket in Kitchen Base Under Sink

<b>OPTIONS</b>
Safe Located in Bedroom Wardrobe

**CABINETS & FURNITURE**

Sable Maple Hardwood Cabinet Doors—Suede Finish
Air Ride Driver and Passenger Seats with Pneumatic Lumbar
Concealed Hinges on Cabinet Doors
Polished Solid-Surface Countertop in Kitchen with Undermounted Stainless Steel Sink and Sink Covers
Polished Solid-Surface Countertop in Bathroom and Bedroom
Cooktop Cover Flush, Matching Countertop Material
Lifts on Bed Top
Pull-Out Pantry Shelves*
Push-to-Release Drawer Slides in Pantry
Ultrafabric Sofa
Plush Pillow Top Mattress
Extended Rotation Concealed Hinge for Washer and Dryer Cabinet Door
Mesh Cell Phone Holder at Each Bunk Bed*
Molded Silverware Divider Tray
Soft-Close Cabinet Drawers
Dinette Booth Williamsburg Sleeper
Villa Comfort Fit Furniture
Bed Base Power Incline Retract-Eliminates Bed Side Windows on 3729 Floor Plan

<b>OPTIONS</b>
Morel Glazed Maple Hardwood Cabinets—High Gloss or Suede Finish
Sable Maple Hardwood Cabinets—High Gloss Finish
Sedona Glazed Maple Hardwood Cabinets—High Gloss or Suede Finish



Summit Maple Hardwood Cabinets—High Gloss or Suede Finish
Two-Tone Summit Maple and Morel Glazed Maple Hardwood Cabinets—High Gloss or Suede Finish
Two-Tone Summit Maple and Sable Maple Hardwood Cabinets—High Gloss or Suede Finish
Two-Tone Summit Maple and Sedona Glazed Maple Hardwood Cabinets—High Gloss or Suede Finish
Buffet Dinette with Free Standing Table with Two Fixed and Two Folding Chairs
Buffet Dinette with Two Fixed and Two Folding Chairs
Euro Booth Dinette with Two Table Leaves, Removable Table Leg and Two Folding Chairs
Dinette Hide-A-Leaf Table with Two Fixed and Two Folding Chairs
R5 Radius Corner Air Mattress
Two Recliners, Lampstand, Reading Lights
Hide-A-Bed
74" Powered Theater Seating with Reading Lights, Off Door Side, 38" Euro Booth Dinette
74" Powered Theater Seating Off Door Side, Hide-A-Leaf Table with Two Fixed and Two Folding Chairs
74" Powered Theater Seating with Reading Lights, Off Door Side, 38" Sleeper Booth Dinette
87" Powered Theater Seating with Reading Lights
74" Jack-Knife Sofa

## APPLIANCES & ACCESSORIES

All Electric Flush Mount Induction Cooktop
19.7 Cu. Ft. Whirlpool® Refrigerator
Air Horns
Prep for Two-Piece Washer and Dryer
Central Vacuum with Tool Kit
<b>OPTIONS</b>
Splendide® Two-Piece Stacked Washer and Dryer
110 Volt Heat Pads for Holding Tanks
Dishwasher in a Drawer with Stainless Steel Front
Freezer on Pull-Out Tray in Exterior Compartment

## AUDIO, VIDEO & ACCESSORIES

Samsung® LED 4K TV and DVD Player in Living and Bedroom Areas* (TV Sizes Vary Per Floor Plan)
50" Samsung® LED 4K TV on Televator in Living Area*
Xite Dash Radio with Apple CarPlay® with 12.3" Monitor with Nav-N-Go Navigation System Side-View Cameras Displayed on Radio Monitor Screen
Winegard Digital Crank-Up TV Antenna
Satellite Dish Prep on Roof
Two Bedroom Radio Speakers
TV Jack and 110 Volt Recept in Door Side Exterior Storage Compartment
10 Bc Fire Extinguisher, Smoke Detectors, Propane and Carbon Monoxide Detector
CAT 6 TV Cables
CB Prep with Antenna
Harman/JBL 180w Sound System and Subwoofer
Bose® Soundbar Sound System
<b>OPTIONS</b>
Radio SiriusXM® Capability with Antenna (Does Not Include Monthly Subscription)
Exterior Entertainment Center in Storage Compartment with 43" Samsung® LED TV and Bose® Soundbar
Prep for Ground Tripod Satellite Dish on Off Door Side with A/B Switch
Winegard Automatic Dome Satellite Dish-for DISH STD/HD, DIRECTV STD and Bell Canada
Winegard Automatic Open Face Satellite Dish-for DISH HD and Bell HD TV
Winegard Automatic Open Face SWM Satellite Dish-for DIRECTV STD/HD
Winegard In Motion Dome Satellite Dish-for DIRECTV, Dish STD/HD
Winegard Rayzar Automatic Digital TV Antenna
WiFiRanger Denali/Spruce LTE
WiFi System Everest with Aspen Interior Router
Universal Remote Control
Universal Toll Module
Starlink Internet System
Two 19" Skyworth TV/DVD Monitors at Each Bunk*
Omniview NS360 Camera System*

\*Check with dealership on floor plan availability







## A. ROOF

Fiberglass Roof  
 Batten Insulation  
 A/C Ducting  
 16" on Center Aluminum Rafter Framing  
 Kraft Paper Vapor Barrier  
 5/8" Bead Foam  
 3/16" Panel  
 Padded Vinyl Overlay

## B. SIDEWALL

Interior Wall Panel  
 5/8" Bead Foam  
 Kraft Paper Vapor Barrier  
 Batten Insulation  
 Composite One-Piece  
 Gelcoat Exterior Sidewall  
 Aluminum Framing

## C. FLOOR

Carpet/Tile  
 Carpet Padding  
 5/8" Floor Decking  
 Batten Insulation  
 16" on Center Wood Framing  
 Polyethylene Moisture Barrier

## D. EXTERIOR

Two 15K BTU Penguin™ Heat Pump  
 Air Conditioners  
 One-Piece Bonded Windshield  
 Coated Aluminum Wheels  
 Frameless, Double-Pane,  
 Tinted Safety Glass Windows  
 Side-Hinged Baggage Doors with  
 Optional Pull-Out Tray  
 Batten Insulation in Front and Rear Cap



# THE NEWMAR CUSTOMER EXPERIENCE

The Newmar Difference™ goes beyond our industry-leading motor coaches to provide you with an unrivaled ownership experience.



## Quality from the Start

Every Newmar is crafted one at a time by folks who have spent an average of eight years building them. Each coach we assemble must undergo more than 1,000 tests and checks before ever leaving our factory.



## Carefully Selected Dealers

We view our dealership network in terms of quality, not quantity. Each of our dealers acts as a partner in our shared mission to exceed your highest of expectations, for an ownership experience that's second to none from day one.



## Everything in One Place

As a Newmar owner, you'll find resources specific to your coach through Newgle, an easy-to-use knowledge base that houses everything from user guides to technical support documents.



## Friends for Life

Meet fellow owners through the Newmar Kountry Klub, a top social club for RV travelers that hosts rallies and other special events throughout the U.S. and Canada.



## Seamless Service

When you join the Newmar family, we pair you with a dedicated service specialist with expert knowledge of your exact coach. Our service specialists guarantee dealer warranty authorizations within four business hours and ship all in-stock parts the same day, free of charge.



## Rock-Solid Protection

All models include a one-year/unlimited mileage limited warranty and a five-year, non-transferable structural warranty that covers your coach's superstructure in the event it fails to perform. Ask your Newmar dealer for more details.



# OUR PARTNERS

The Newmar Difference™ begins with suppliers dedicated to providing our customers with unrivaled quality, comfort, and support.



We create chemistry

## BASF

The Coatings division of BASF is a global expert in the development and production of innovative and sustainable OEM and refinish coatings. Coatings by BASF—solutions beyond your imagination.



## Industrial Finishes

Industrial Finishes has supported RV manufacturers for over four decades, offering paint products that deliver uncompromising quality and provide your coach with a true Masterpiece™ finish.



Driven By You

## Freightliner Custom Chassis

Freightliner Custom Chassis are renowned for their exceptional ride, excellent maneuverability, advanced technology, and nationwide 24/7 factory-direct support.



## RiverPark

From Samsung® 4K TVs and Xite Infotainment systems to Bose® soundbars and JBL and Infinity premium audio systems, RiverPark helps you experience a higher level of technology in your Newmar coach.



## Spartan RV Chassis

An American company with over 30 years of experience in designing and manufacturing the premier motorhome chassis, Spartan delivers superior performance, exceptional safety ratings, and industry-leading technology.





WHEN YOU KNOW THE DIFFERENCE<sup>SM</sup>