



# VENTANA

2025 DIESEL MOTORCOACH

VENTANA

---

## Assume adventure. Claim confidence.

Brave new horizons in a coach that always feels like home. The 2025 Ventana sports new features in its already luxurious design, providing immeasurable comfort and quality throughout. With eight floor plans, varying lengths, and plenty of options to choose from, this coach is easy to love and even easier to own. Your perfect Ventana awaits.



# Freightliner® XCR Chassis Spartan® K2 Chassis (Optional)

Cummins L Diesel Engine | 380 HP | 1,150 lb./ft. torque | Ebony Full-Paint Masterpiece Finish™ Exterior



35'-38' / 3 floor plans

# Freightliner® XCR Tag Axle Chassis Spartan® K2 Tag Axle Chassis (Optional)

Cummins L Diesel Engine | 400 HP | 1,250 lb./ft. torque | Ebony Full-Paint Masterpiece Finish™ Exterior



40' - 43' / 5 floor plans

# COCKPIT

**Six-Way Power Driver and Passenger Seats**

Power Lumbar and Footrest

**Industry-First Comfort Drive™ Adaptive Steering**

**Mobileye® Lane Tracking and Departure System**

**OnGuard™ Collision Mitigation Adaptive Cruise System (Optional)**

Adjustable Following Distance Control

**Tire Pressure Monitor System**

**Xite Dash Radio**

9" Dual Monitors

Nav-N-Go Navigation

Apple CarPlay®

**Harman/JBL 180w Sound System and Subwoofer**





Floor plan 3809 with Saguaro décor and Summit cabinets

## CABIN

**Three Décor Options: Brighton, Palisades, and Saguaro**

**Powered Theater Seating\*** (Optional)

**50" Samsung® 4K LED TV on Televator**

Bose® Soundbar

43" Samsung® 4K LED TV in Front Overhead (Optional)

**Window Treatments**

**Porcelain Tile Flooring**

*\*See Features & Options for all available furniture configurations*



# CABIN

**Maple Cabinet Doors in High Gloss or Suede Finish\***

Available in Four Solid Colors and Three Two-Tone Options\*  
 Soft-Close Cabinet Drawers  
 Undermounted LED Lights

**Two 15K BTU Penguin™ Heat Pump Central Air Conditioners\*\***

**Electric Radiant Heat Beneath Main Floor Tile** (Optional)

**Starlink Internet System\*** (Optional)

**10" Monitor with Interior Lighting and HVAC Controls**

**Drop-Down Bunk Bed Above Cockpit** (Optional)

\*New for 2025  
 \*\*Three units on 43' floor plans



Floor plan 3809 with Saguario décor and Summit cabinets

CABINET FINISHES





## GALLEY & DINETTE

**30" Convection Stainless Steel Microwave**  
**All-Electric Flush Mount Induction Cooktop**

**19.7 Cu. Ft. Whirlpool® Refrigerator**

**Wine Cooler\*** (Optional)

**Dishwasher in Drawer** (Optional)

**Polished Solid-Surface Countertops**

**Pull-out Pantry Shelves**

Push-to-Release Drawer Slides

**Euro Booth Dinette** (Optional)

**Backsplash**



*\*Available exclusively on floor plan 4068*







## BEDROOM

**King-Size Bed\* with Pillow Top Mattress**

Adjustable Support Air Bed (Optional)

**Samsung® 4K LED TV**

**Wardrobe**

Safe (Optional)

*\*Bed size varies by floor plan*



# BATHROOM

**Residential Shower\***

**Vanity, Backsplash, and Hardware**

**Aqua Miser® Shower System**

**Stacked Two-Piece Splendide®  
Washer and Dryer (Optional)**

**Chinook Dual Loop Heat with  
Continuous Water**

**Polished Solid-Surface Countertops**



*\*Shower size varies by floor plan  
Half baths available on select floor plans*





## EXTERIOR & STORAGE

### Industry-Exclusive Full-Paint Masterpiece Finish™

New Exterior Design with Three Color Combinations\*

### Girard® G2000 Power Side Awning

- Wind Sensor
- LED Lights
- Remote Control

### SilverStar Ultra Headlight Bulbs

- Automatic High Beam

### Exterior Entertainment Center (Optional)

- Samsung® 4K LED TV
- Bose® Soundbar

\*Newly styled for 2025



## EXTERIOR

- Industry-Exclusive STAR Foundation**
- 8.0 kW Cummins Onan® Diesel Generator**
- Four Flexible 110w Solar Panels on Roof** (Optional)
- 10w Solar Panel**  
(to charge chassis battery)





# DESIGN OPTIONS

---

INTERIOR AND EXTERIOR

# CIDER



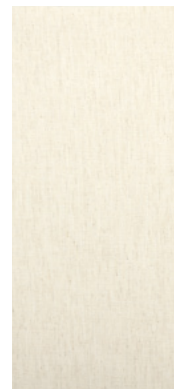
| Charcoal Tweed Awning



**BRIGHTON INTERIOR**



Furniture



Fabric



Fabric



Flooring



Counter Top

*\*Exterior colors and interior décor options can be matched to customer preference.*

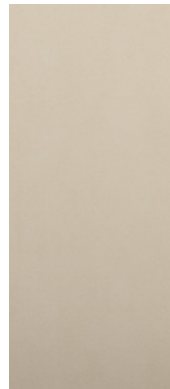
# EBONY



| Charcoal Tweed Awning



**PALISADES INTERIOR**



Furniture



Fabric



Fabric



Flooring



Counter Top

SKY



| Charcoal Tweed Awning



**SAGUARO INTERIOR**



Furniture



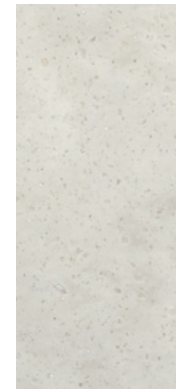
Fabric



Fabric



Flooring



Counter Top

*\*Exterior colors and interior décor options can be matched to customer preference.*



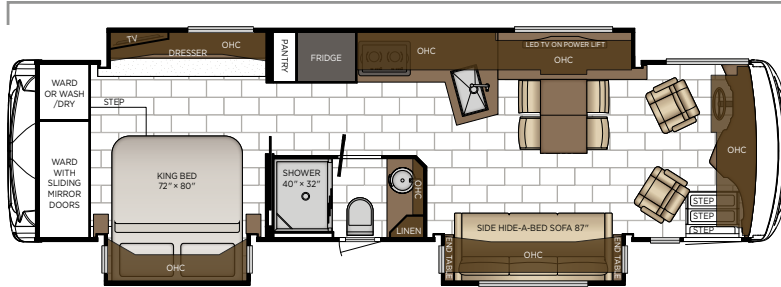


# FLOOR PLANS

---

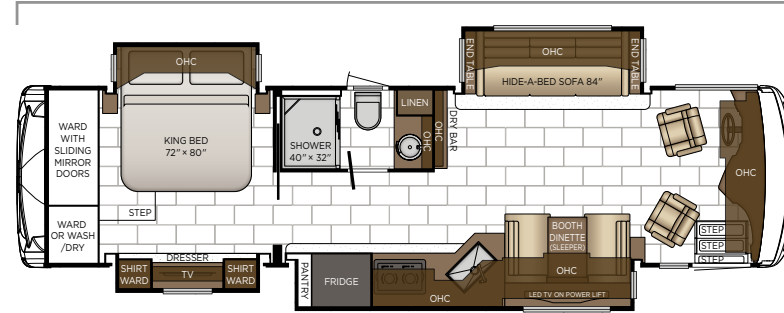
AND SPECIFICATIONS

Length: 35' 10"



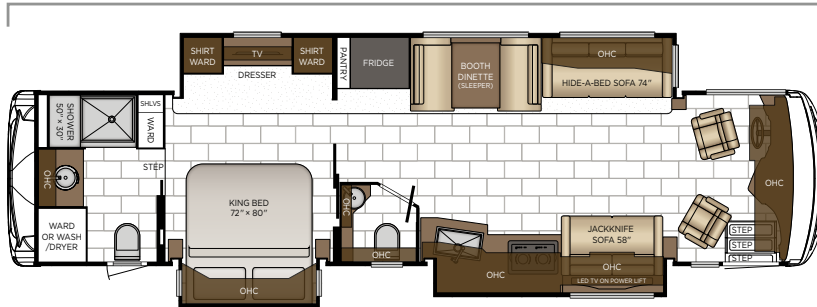
<b>3507</b>	Length	35' 10"	Grey Tank	75 gal.
	Width	101.5"	Sewage Tank	55 gal.
	App. Overall Height	12' 10"	Water Tank	105 gal.
	Interior Width	95.5"	Furnace	50,000 btu
	Interior Height	83"		

Length: 35' 10"



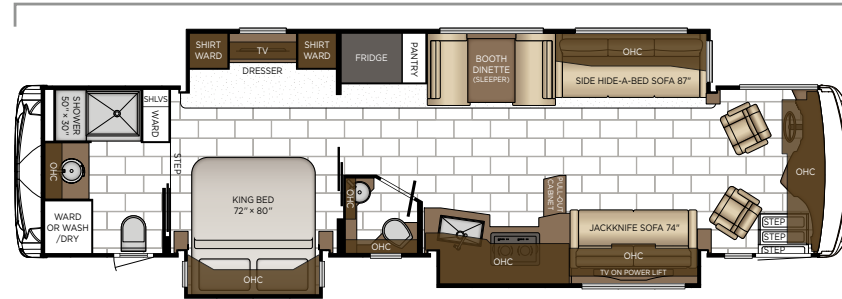
<b>3512</b>	Length	35' 10"	Grey Tank	75 gal.
	Width	101.5"	Sewage Tank	55 gal.
	App. Overall Height	12' 10"	Water Tank	105 gal.
	Interior Width	95.5"	Furnace	50,000 btu
	Interior Height	83"		

Length: 38' 10"



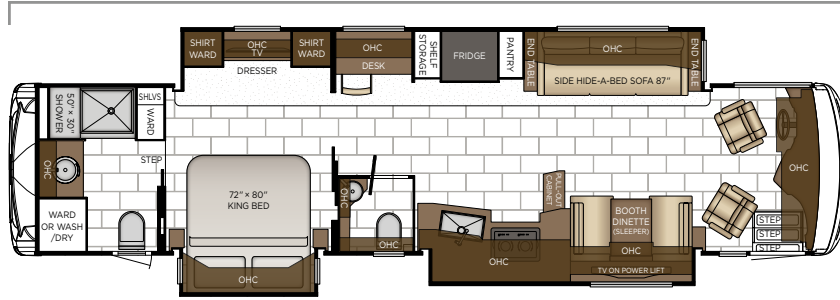
<b>3809</b>	Length	38' 10"	Grey Tank	75 gal.
	Width	101.5"	Sewage Tank	55 gal.
	App. Overall Height	12' 10"	Water Tank	105 gal.
	Interior Width	95.5"	Furnace	50,000 btu
	Interior Height	83"		

Length: 40' 10"



<b>4037</b>	Length	40' 10"	Grey Tank	75 gal.
	Width	101.5"	Sewage Tank	55 gal.
	App. Overall Height	12' 11"	Water Tank	105 gal.
	Interior Width	95.5"	Furnace	50,000 btu
	Interior Height	83"		

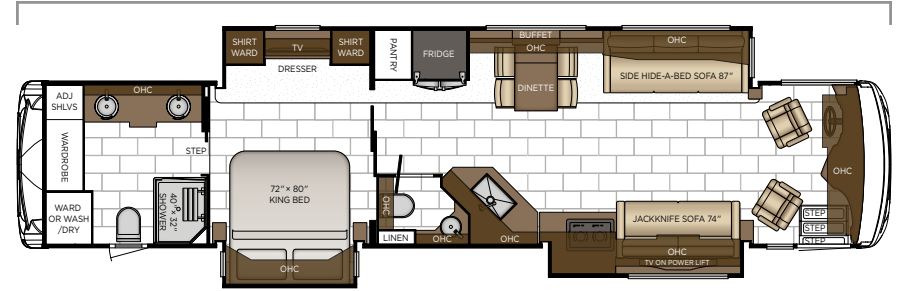
Length: 40' 10"



<b>4068</b>	Length	40' 10"
	Width	101.5"
	App. Overall Height	12' 11"
	Interior Width	95.5"
	Interior Height	83"

Grey Tank	75 gal.
Sewage Tank	55 gal.
Water Tank	105 gal.
Furnace	50,000 btu

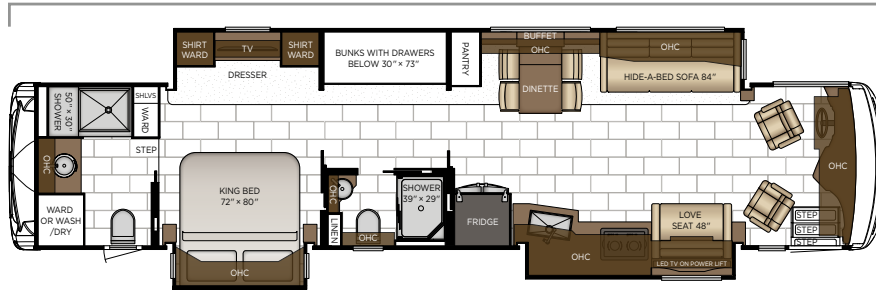
Length: 43' 10"



<b>4328</b>	Length	43' 10"
	Width	101.5"
	App. Overall Height	13' 01"
	Interior Width	95.5"
	Interior Height	83"

Grey Tank	75 gal.
Sewage Tank	55 gal.
Water Tank	105 gal.
Furnace	50,000 btu

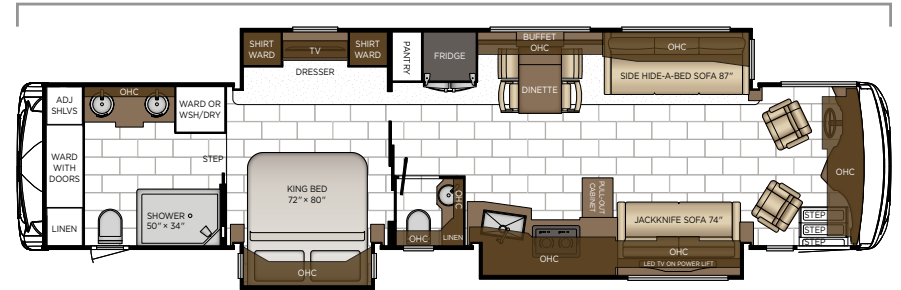
Length: 43' 10"



★ <b>4340</b>	Length	43' 10"
	Width	101.5"
	App. Overall Height	13' 01"
	Interior Width	95.5"
	Interior Height	83"

Grey Tank	75 gal.
Sewage Tank	55 gal.
Water Tank	105 gal.
Furnace	85,000 btu

Length: 43' 10"



<b>4369</b>	Length	43' 10"
	Width	101.5"
	App. Overall Height	13' 01"
	Interior Width	95.5"
	Interior Height	83"

Grey Tank	75 gal.
Sewage Tank	55 gal.
Water Tank	105 gal.
Furnace	50,000 btu

★ - new floor plan

# Quality You Can Feel

Like a fine home, the 2025 Ventana is framed 16 inches on center, and is covered by a fiberglass roof with an integrated gutter rail.

SPARTAN®											
FLOOR PLAN	ENGINE HP	AXLE RATIO	FUEL CAP.	WHEEL BASE	FRONT GAWR	REAR GAWR	TAG GAWR	GVWR	GCWR	APP. UVW	APP. NCC
3507	380	4.78	100	212	14000 lb.	24000 lb.	0	38000 lb.	48000 lb.	31100 lb.	6900 lb.
3512	380	4.78	100	212	14000 lb.	24000 lb.	0	38000 lb.	48000 lb.	31450 lb.	6550 lb.
3809	380	4.78	100	248	14600 lb.	24000 lb.	0	38600 lb.	48600 lb.	32700 lb.	5900 lb.
4037	400	4.88	100	245+TAG	14600 lb.	20000 lb.	10000 lb.	44600 lb.	59600 lb.	35400 lb.	9200 lb.
4068	400	4.88	100	245+TAG	14600 lb.	20000 lb.	10000 lb.	44600 lb.	59600 lb.	35750 lb.	8850 lb.
4328	400	4.88	100	281+TAG	16000 lb.	20000 lb.	10000 lb.	46000 lb.	61000 lb.	36400 lb.	9600 lb.
4340	400	4.88	100	281+TAG	16000 lb.	20000 lb.	10000 lb.	46000 lb.	61000 lb.	37000 lb.	9000 lb.
4369	400	4.88	100	281+TAG	16000 lb.	20000 lb.	10000 lb.	46000 lb.	61000 lb.	36900 lb.	9100 lb.
FREIGHTLINER®											
FLOOR PLAN	ENGINE HP	AXLE RATIO	FUEL CAP.	WHEEL BASE	FRONT GAWR	REAR GAWR	TAG GAWR	GVWR	GCWR	APP. UVW	APP. NCC
3507	380	4.78	100	212	14200 lb.	24000 lb.	0	38200 lb.	48200 lb.	31150 lb.	7050 lb.
3512	380	4.78	100	212	14200 lb.	24000 lb.	0	38200 lb.	48200 lb.	31500 lb.	6700 lb.
3809	380	4.78	100	248	15000 lb.	24000 lb.	0	39000 lb.	49000 lb.	32950 lb.	6050 lb.
4037	400	4.78	100	245+TAG	15000 lb.	20000 lb.	10000 lb.	45000 lb.	60000 lb.	35600 lb.	9400 lb.
4068	400	4.78	100	245+TAG	15000 lb.	20000 lb.	10000 lb.	45000 lb.	60000 lb.	35900 lb.	9100 lb.
4328	400	4.78	100	281+TAG	15600 lb.	20000 lb.	10000 lb.	45600 lb.	60600 lb.	36500 lb.	9100 lb.
4340	400	4.78	100	281+TAG	15600 lb.	20000 lb.	10000 lb.	45600 lb.	60600 lb.	37050 lb.	8550 lb.
4369	400	4.78	100	281+TAG	15600 lb.	20000 lb.	10000 lb.	45600 lb.	60600 lb.	36950 lb.	8650 lb.

The content in our literature depicts and describes products that are subject to change. For the most recent images and information, please visit [NewmarCorp.com](http://NewmarCorp.com).

Lengths, heights, widths, and dry weights are approximate. Weight will vary based on optional equipment added to the above base weight.

**GAWR:** Gross Axle Weight Rating is the maximum permissible weight for an axle.

**GVWR:** Gross Vehicle Weight Rating is the maximum permissible weight for a fully loaded motor coach.

**GCWR:** Gross Combination Weight Rating is the value specified by the manufacturer of the vehicle as the maximum allowable loaded weight of this motor coach and any towed trailer or towed vehicle.

**UVW:** Unloaded Vehicle Weight is the weight of this motor coach as built at the factory with full fuel, engine oil, and coolants. Does not include cargo, fresh water, propane gas, or dealer-installed accessories.

**NCC:** Net Carrying Capacity is the maximum weight of all occupants, including the driver, personal belongings, food, fresh water, waste water, propane gas, tools, tongue weight of towed vehicle, dealer-installed accessories, etc., that can be carried by the motor coach.

**Specifications supplied by the chassis manufacturer.**

**Ventana R-Values:**

- Roof R-Value = 19
- Sidewall R-Value = 11
- Floor R-Value = 16
- Basement R-Value = 4



# FEATURES

---

AND OPTIONS

## EXTERIOR FEATURES

Full-Paint Masterpiece Finish™ with Diamond Shield Protection on Front Cap  
Convex Exterior Mirrors with Remote Control, Defrost and Turn Signal Indicators  
Chrome Exterior Mirrors  
Entrance Door with Automatic Step  
Rear Hitch for Towing Car  
Assist Handle at Entrance Door  
Mud Flaps  
Rear Protective Tow Guard with Stainless Steel Newmar Letters  
Undercoating  
Smart Level Hydraulic Leveling Jacks with Bluetooth Compatible Touchpad  
Stainless Steel Exterior Trim Pieces on Front Cap and Grill Area  
Painted Power Baggage Door Locks, Keyless Entrance Door with Touchpad and Doorbell

### OPTIONS

Chrome Power Baggage Door Locks  
Flagpole Bracket  
Rear Ladder  
Storage Tray 32" x 91" Non-Power, Location-Bay 2  
Storage Tray 36" x 91" Non-Power, Location-Bay 2  
Storage Tray 43" x 56" Non-Power, Location-Bay 3  
Storage Tray 43" x 56" Non-Power, Location-Bay 4

## CONSTRUCTION FEATURES

Gelcoated Fiberglass Exterior Sidewalls, Front and Rear Caps  
Aluminum-Frame Sidewalls and Roof Construction, 16" on Center  
5/8" Foam Insulation Laminated in Sidewalls and Ceiling  
Automatic Mechanical Lock Arms on Slideout Rooms—Scissor Style  
Polar Pak R19 Batten Insulation in Roof  
Fiberglass Roof and Integrated Gutter Rail  
Egress Door with Ladder System

## WINDOWS, AWNINGS, & VENTS

Frameless Double-Pane Tinted Safety-Glass Windows  
Fan-Tastic® Vent with Rain Sensor in Kitchen and Bathroom  
Skylight Above Shower  
Girard® G2000 Power Side Awning with Wind Sensor, Remote Control and LED lights  
Slideout Awning Covers  
One-Piece Tinted Windshield

### OPTIONS

Kitchen Window\*

Carefree Window Awning Package of Three—1 Bedroom, 1 Off Door Side Living Room, 1 Door Side Living Room  
Two Nova Side Awnings  
Bunk Windows\*

## CHASSIS FEATURES

Aluminum Wheels  
Cruise Control  
Comfort Drive™ Steering with Power Column and Adjustable Control  
Manual Tilt and Telescope Steering Column with VIP Smart Wheel  
Recessed Fuel Fills with Crossover to Fill from Either Side  
Back-Up Alarm  
Anti-Lock Braking System  
Chassis Battery Disconnect  
V-Ride Drive Axle Suspension on Freightliner® Chassis  
Glass Dash Instrumental Panel  
Dash Panel Optiview—Freightliner®  
Headlights Automatic High Beam  
Mobileye® Tracking and Lane Departure Warning System  
Steering Wheel Nine Function Switch Pod in Center on Spartan® Chassis  
Valid Digital Glare Free Dash on Spartan® Chassis  
Module Cummins Acumen  
Freightliner® 380Hp on 35'-38' Floor Plans  
Freightliner® Tag Axle 400Hp on 40'-43' Floor Plans  
Tire Pressure Monitoring on Chassis

### OPTIONS

Spartan® 380Hp on 35'-38' Floor Plans  
Spartan® Tag Axle 400Hp on 40-43' Floor Plans  
OnGuard™ Collision Mitigation Adaptive Cruise System with Adjustable Following Distance Control—Freightliner® or Spartan®

## AIR CONDITIONING & HEATING

Two 15K BTU Penguin™ Heat Pump Air Conditioners  
Three 15K BTU Penguin™ Heat Pump Air Conditioners on 43' Floor Plans  
Dash Heater and Air Conditioner  
Driver and Passenger Dash Overhead Ventilation System  
Wall Mounted Sensors for Heating and Air Conditioning

### OPTIONS

Electric Radiant Heat Installed Below Main Floor Tile

**ELECTRICAL FEATURES**

8.0 kW Cummins Onan® Diesel Quiet Series Generator
50 Amp Electrical Service with Flexible Cord with Automatic Transfer Switch
Eight 6-Volt House Batteries
Battery Disconnect Switch for House Battery
Automatic Generator Start on Low Battery or Temperature Setting
10w Solar Panel to Charge Chassis Battery
2800w Modified Sine Inverter
12 Volt Auxiliary Receptacle on Dashboard
Emergency Engine Start Switch
Engine Block Heater
Exterior Security Light on Doorside
Midship Side Turn Signals
LED Lights Recessed in Ceiling and Underneath Overhead Cabinets
Lights in Exterior Storage Compartments
Manually Operated Hold-to-Run Slideout Switch
Cable TV Connection
Interior Courtesy Lights
USB Outlet at Dinette and Bedroom Nightstand
USB Outlet at Dash for Drive Use
Wireless Charging Mat Built into Dash for Driver Use
Wireless Charging Mat Built into Passenger Console
Spare Fuses in Chassis and House Fuse Panels
Energy Management System
Multiplex Monitor System 10.1" in Center of Coach with Interior Lighting and HVAC Controls
Dimmable/Adjustable Reading Lights at Head of Bed
110 Volt Recept in Bed Overhead with Two Pass-Through Ports
110 Volt/USB Outlet at Head of Each Bunk Area*
Power Rewind Reel with 33' Cord*
Power Rewind Reel with 50' Cord*
Connected Solutions App
Dash Radio, Cameras and Monitors to Power-up from both House Batteries Ignition

**OPTIONS**

Solar Prep with Six Gauge Wire Ran from the Roof to the House Battery Compartment*
Four Flexible 110w Solar Panels on Roof
Transfer Switch with Surge Protector
Lithium Ion 640 AHR Battery System with Two 3000w Pure Sine Inverters
Lithium Ion 960 AHR Battery System with Two 3000w Pure Sine Inverters

**PLUMBING & BATH FEATURES**

Demand Water System
---------------------

Sewage Holding-Tank Rinse
Dometic® Macerator Stool*
Sentrel™ Acrylic Shower Walls with Glass Door
Water Filter for Entire Unit
Exterior Shower
Auto Fill Water Works Compartment
Power Water Hose Reel
Aqua Miser® Shower System

**OPTIONS**

Fold-Down Shower Seat
Hot Water Line to Generator Area

**INTERIOR FEATURES**

Designer Feature Ceiling
Tile Floor in Kitchen, Bathroom and Living Areas
Carpeting on Slideout Floors
MCD Window Shades
MCD Power Shades on Windshield and Manual Shades on Driver and Passenger Side Windows
Dash Panel Color Coordinated ABS
Decorative Wall Art
Inlaid Three Panel Design Interior Passage Doors
Interior Assist Handle at Main Entry Door
Power Stepwell Cover
Fitted with Round Corner Non-Quilted Bedspread with Accent Pillows
Removable Transport Pads for Under Slideout Rollers
Wastebasket in Kitchen Base Under Sink

**OPTIONS**

Safe Located in Bedroom Wardrobe
----------------------------------

**CABINETS & FURNITURE**

Sable Maple Hardwood Cabinets—Suede Finish
Concealed Hinges on Cabinet Doors
Soft-Close Cabinet Drawers
Pull-Out Pantry Shelves*
Drawer Slides Push-to-Release in Pantry
Drawers with Full Extension Ball Bearing Guides
Cooktop Cover Flush, Matching Material
Polished Solid-Surface Countertop in Kitchen with Undermounted Stainless Steel Sink and Sink Covers
Polished Solid-Surface Countertop in Bathroom and Bedroom

Desk with One Chair*
Dinette Booth Williamsburg Convertible*
Lifts on Bed Top
Ultrafabric Sofa and Driver/Passenger Seats
Driver Seat with Vibrator for Mobileye® System
Driver and Passenger Seats with Six-Way Power, Power Lumbar and Footrest
Plush Pillow Top Mattress
Extended Rotation Concealed Hinge for Washer and Dryer Cabinet Door
Mesh Cell Phone Holder at Each Bunk Bed*
Molded Silverware Divider Tray
Villa Comfort Fit Furniture

#### OPTIONS

Morel Glazed Maple Hardwood Cabinets—High Gloss or Suede Finish
Sable Maple Hardwood Cabinets—High Gloss Finish
Sedona Glazed Maple Hardwood Cabinets—High Gloss or Suede Finish
Summit Maple Hardwood Cabinets—High Gloss or Suede Finish
Two-Tone Summit Maple and Morel Glazed Maple Hardwood Cabinets—High Gloss or Suede Finish
Two-Tone Summit Maple and Sable Maple Hardwood Cabinets—High Gloss or Suede Finish
Two-Tone Summit Maple and Sedona Glazed Maple Hardwood Cabinets—High Gloss or Suede Finish
Mattress Air R5 Radius Corner
Buffet Dinette with Two Fixed and Two Folding Chairs
Combination Desk with Buffet Table, Two Fixed and Two Folding Chairs
Dinette Convertible with Two Fixed and Two Folding Chairs that Face to Window
Dinette Combination Desk with Free Standing Hidden Leaf Table with Two Fixed and Two Folding Chairs that Face to Window
Dinette Euro Booth with Two Table Leaves, Removable Table Leg and Two Folding Chairs
Two Recliners with Lampstand and Reading Lights
74" Powered Theater Seating with Reading Lights
84" Powered Theater Seating with Reading Lights
87" Powered Theater Seating with Reading Lights
Bunk Beds to Convert to Wardrobe
Bunk Bed Drop-Down Over Driver and Passenger Seats to Windshield with Bunk Ladder

#### APPLIANCES & ACCESSORIES

Convection Stainless Steel Microwave with Air Fryer Feature
All Electric Flush Mount Induction
Air Horns
19.7 Cu. Ft. Whirlpool® Refrigerator

Prep for Two-Piece Washer and Dryer
Fireplace in Living Area*
Chinook Dual Loop Heat with Continuous Hot Water
<b>OPTIONS</b>
Splendide® Two-Piece Stacked Washer and Dryer
Central Vacuum with Tool Kit
Dishwasher in a Drawer with Stainless Steel Front Below Cooktop
Electrical Prep for Freezer without Tray
Beverage Center Dual Zone
Fireplace
LP Cooktop, 22 Gallon LP Tank with Six 6-Volt Batteries

#### AUDIO, VIDEO & ACCESSORIES

Samsung® LED 4K TV in Living and Bedroom Areas* (TV Sizes Vary Per Floor Plan)
50" Samsung® LED 4K TV on Televator in Living Area*
Dash Radio with Harman/JBL 180w Sound System and Subwoofer
Xite Dash Radio with Apple CarPlay®, 9" Dual Monitors with Nav-N-Go Navigation System
Bose® Soundbar Sound System
Bluetooth Microphone for Dash Radio
Rear-View Color Monitor System with Audio
Side-View Cameras Displayed on Rear-View Monitor Screen
Winegard Digital Crank-up TV Antenna
Satellite Dish Prep on Roof
Two Bedroom Radio Speakers
TV Jack and 110 Volt Recept in Door Side Exterior Storage Compartment
High-Definition Component Wiring
10 Bc Fire Extinguisher, Smoke Detectors, Propane and Carbon Monoxide Detector

#### OPTIONS

SiriusXM® Satellite Capability with Antenna (Does not include monthly subscription)*
43" Samsung® 4K LED TV in Front Overhead
Exterior Entertainment Center in Sidewall with 32" Samsung® 4K LED TV and Bose® Soundbar
Exterior Entertainment Center in Sidewall with 43" Samsung® 4K LED TV and Bose® Soundbar
Exterior Entertainment Center in Storage Compartment with 43" Samsung® LED TV and Bose® Soundbar
Omniview NS360 Camera System*
Extra Monitor on Passenger Side
Starlink Internet System
Universal Remote Control
Universal Toll Module



Prep for Ground Tripod Satellite Dish on Off Door Side with A/B Switch
Two 19" Skyworth Monitors at Each Bunk*
Passenger Side Monitor
WiFiRanger Denali/Spruce LTE
WiFi System Everest with Aspen Interior Router
Winegard Automatic Dome Satellite Dish-for Std/HD, DIRECTV Std. and Bell Canada
Winegard Automatic Open Face Satellite Dish-for HD and Bell HD TV
Winegard Automatic Open Face SWM Satellite Dish-for DIRECTV Std/HD
Winegard In-Motion Dome Satellite Dish-for Std/HD, DIRECTV Std. and Bell Canada
Winegard Rayzar Automatic Digital TV Antenna



*\*Check with dealership on floor plan availability*



## A. ROOF

Fiberglass Roof  
 Batten Insulation  
 A/C Ducting  
 16" on Center Aluminum Rafter Framing  
 Kraft Paper Vapor Barrier  
 5/8" Bead Foam  
 3/16" Panel  
 Padded Vinyl Overlay

## B. SIDEWALL

Interior Wall Panel  
 5/8" Bead Foam  
 Kraft Paper Vapor Barrier  
 Batten Insulation  
 Composite One-Piece  
 Gelcoat Exterior Sidewall  
 Aluminum Framing

## C. FLOOR

Carpet/Tile  
 Carpet Padding  
 5/8" Floor Decking  
 Batten Insulation  
 16" on Center Wood Framing  
 Polyethylene Moisture Barrier

## D. EXTERIOR

Two 15K BTU Penguin™ Heat Pump  
 Air Conditioners  
 One-Piece Bonded Windshield  
 Coated Aluminum Wheels  
 Frameless, Double-Pane,  
 Tinted Safety Glass Windows  
 Side-Hinged Baggage Doors with  
 Optional Pull-Out Tray  
 Batten Insulation in Front and Rear Cap

# THE NEWMAR CUSTOMER EXPERIENCE

The Newmar Difference™ goes beyond our industry-leading motor coaches to provide you with an unrivaled ownership experience.



## Quality from the Start

Every Newmar is crafted one at a time by folks who have spent an average of eight years building them. Each coach we assemble must undergo more than 1,000 tests and checks before ever leaving our factory.



## Carefully Selected Dealers

We view our dealership network in terms of quality, not quantity. Each of our dealers acts as a partner in our shared mission to exceed your highest of expectations, for an ownership experience that's second to none from day one.



## Everything in One Place

As a Newmar owner, you'll find resources specific to your coach through Newgle, an easy-to-use knowledge base that houses everything from user guides to technical support documents.



## Friends for Life

Meet fellow owners through the Newmar Kountry Klub, a top social club for RV travelers that hosts rallies and other special events throughout the U.S. and Canada.



## Seamless Service

When you join the Newmar family, we pair you with a dedicated service specialist with expert knowledge of your exact coach. Our service specialists guarantee dealer warranty authorizations within four business hours and ship all in-stock parts the same day, free of charge.



## Rock-Solid Protection

All models include a one-year/unlimited mileage limited warranty and a five-year, non-transferable structural warranty that covers your coach's superstructure in the event it fails to perform. Ask your Newmar dealer for more details.

# OUR PARTNERS

The Newmar Difference™ begins with suppliers dedicated to providing our customers with unrivaled quality, comfort, and support.



We create chemistry

## BASF

The Coatings division of BASF is a global expert in the development and production of innovative and sustainable OEM and refinish coatings. Coatings by BASF—solutions beyond your imagination.



## Industrial Finishes

Industrial Finishes has supported RV manufacturers for over four decades, offering paint products that deliver uncompromising quality and provide your coach with a true Masterpiece™ finish.



Driven By You

## Freightliner Custom Chassis

Freightliner Custom Chassis are renowned for their exceptional ride, excellent maneuverability, advanced technology, and nationwide 24/7 factory-direct support.



## RiverPark

From Samsung® 4K TVs and Xite Infotainment systems to Bose® soundbars and JBL and Infinity premium audio systems, RiverPark helps you experience a higher level of technology in your Newmar coach.



## Spartan RV Chassis

An American company with over 30 years of experience in designing and manufacturing the premier motorhome chassis, Spartan delivers superior performance, exceptional safety ratings, and industry-leading technology.



WHEN YOU KNOW THE DIFFERENCE<sup>SM</sup>